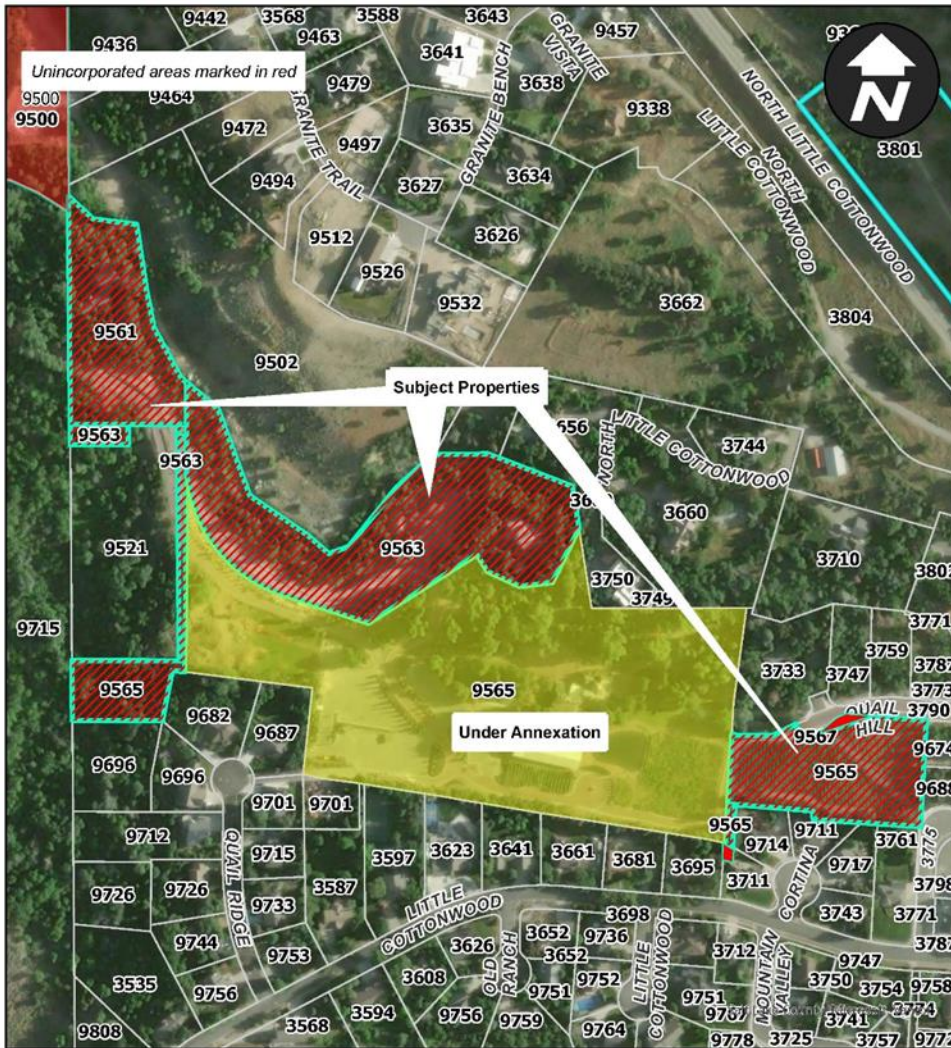


Annexation

- LaCaille 2 Annexation
- 9561, 9563, and remainder of 9565 S Wasatch Blvd parcels
- Property owner signed a consent to annex on April 2, 2026
- County Zoning: C-2, C-2/zc and R-1-43
- Sandy Zoning: R-1-40 and CC (Community Commercial)
- Planning Commission forwarding a positive recommendation.



LaCaille 2 Annexation
9561, 9563, and remainder of
9565 S Wasatch Blvd parcels

Community Development Department



City Council

