

# Sandy City Council Discussion on Alta Canyon Sports Center

*March 10, 2020*



# Overview of Alta Canyon Sports Center Neighborhood Meeting

*January 28, 2019*



# Presentation Overview

- Welcome and Introductions
- Alta Canyon Special Service District History
- Overview/Objectives
- Public Discussion



# Introductions

## City Administration

- Mayor Kurt Bradburn
- Matthew Huish, CAO
- Evelyn Everton, Deputy Mayor
- Scott Earl, Parks & Recreation Director
- Dan Medina, Parks & Recreation Deputy Director
- Todd Asay, Assistant Director
- Jetta Valentine, Alta Canyon Center Manager

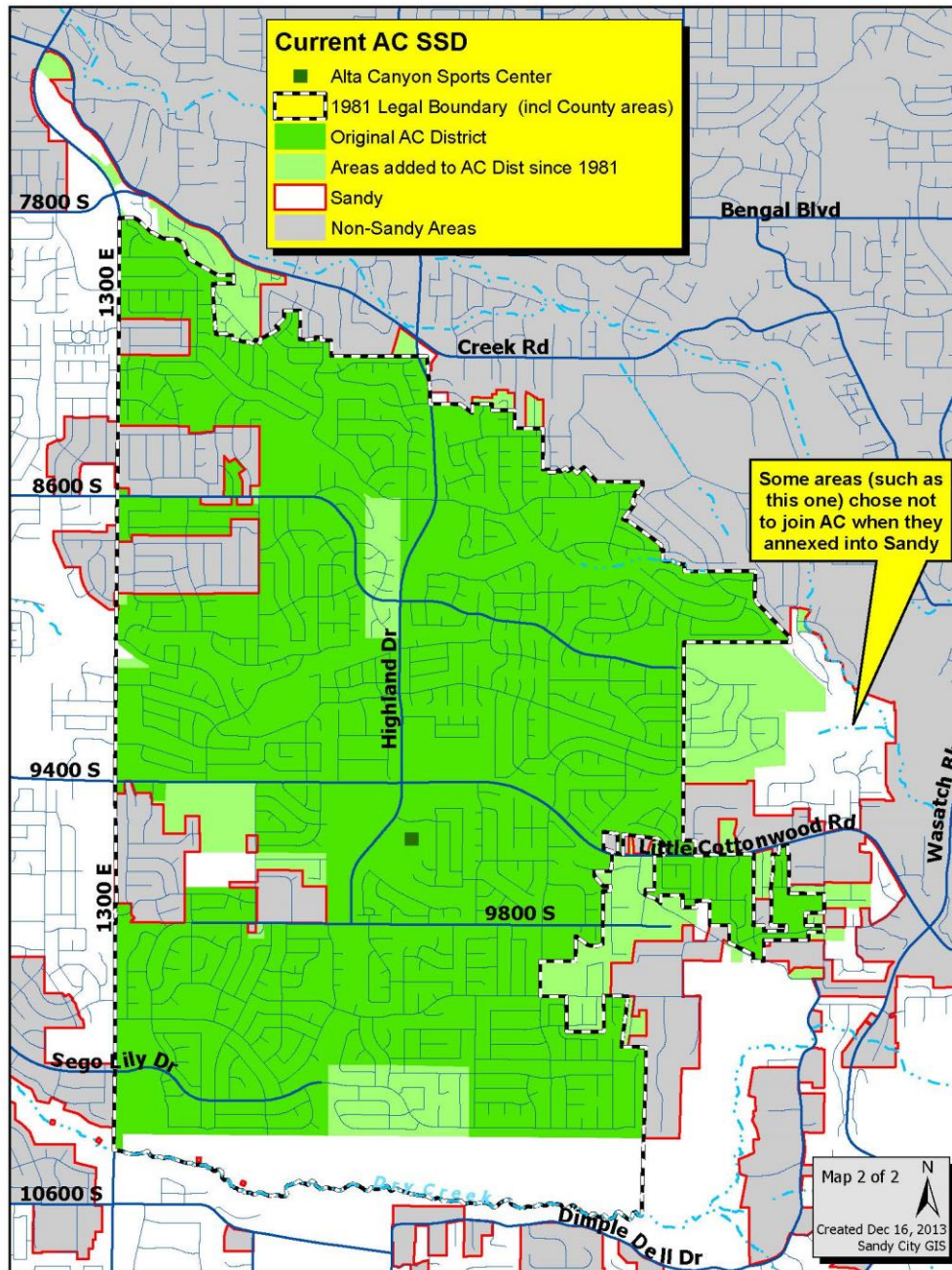
## Alta Canyon Board Members

- Stephanie Juhl – Chair
- Monica Koronkowski – Vice Chair
- Shauna Rohbock
- Carol Lupus
- David Holdsworth
- Liz Kennington
- Glen Hoover

# Special Service District Overview

A special service district may be created by a city or a county to provide any combination of the following services:

- Water
- Sewer
- Drainage
- Flood Control
- Garbage Collection and Disposal
- Health Care
- Transportation
- Recreation
- Fire Protection (includes emergency medical services, ambulance, search and rescue)
- Correctional and Rehabilitation Facilities
- Consolidated 911 and Emergency Dispatch
- Animal Shelter and Control
- Receipt of Federal Mineral Lease Funds to Mitigate Impacts from Mining
- Extended Police Protection (in counties of the first class)
- Control or Abatement of Earth Movement or Landslide



# Alta Canyon Sports District History

- 1981 - Alta Canyon Sports District was formed
  - 7 member elected board formed
  - District bonded \$3,000,000 to construct:
    - Alta Canyon Sports Center
    - Alta Canyon, Willow Creek, Falcon & Buttercup Parks
  - District retained Ownership, Operations, & Maintenance of Alta Canyon Sports Center and Sandy City maintained the parks

# District History Continued

- 2002
  - Inter-local agreement with Sandy City
    - District maintained financial responsibility and policy making ability
    - Sandy City manages operations
- 2005
  - Applied for Salt Lake County ZAP
- 2007
  - District voted to approve tax rate increase
- 2008
  - Center expansion planned, but put on hold due to economic recession
- 2015
  - Applied for Salt Lake County ZAP Tax funding to expand and remodel - denied funding



# Proposed Improvement Plans 2015 Zap Application

Addition of 27,000 sq. ft.  
to include:

- Indoor multipurpose gym
- Indoor elevated track
- Multi purpose room/aerobics
- Weight & cardio rooms
- Parking
- Storage

Remodel of the following:

- Pool mechanical equipment
- HVAC & air handler
- Front lobby
- Locker rooms
- Child care areas & classrooms

# 2008 Design and 2009 Bid. Canceled due to Recession

Addition of 44,000 sq. ft.  
to include:

- Items in 2015 Zap Application
- Parks & Rec Offices
  - Administration
  - Recreation
  - Parks Superintendent and Supervisors
  - Additional storage/ancillary facilities

Phase II of 2008 Plan:

- Indoor Pool
  - 15,000 sq. ft.
  - 5 lane lap
  - Shallow pool for water aerobic classes
  - Additional storage/ancillary facilities

# Other Expansion Options Discussed

- Indoor Tennis Courts
- Indoor Pickleball Courts
- Climbing wall
- Leisure Pool
- eSports
- Indoor Multipurpose Field (Lacrosse, Soccer, Volleyball, Football,...)

# 2008 Main Floor Plan

- 1. ENTRANCE LOBBY
- 2. CONTROL POINT
- 3. INTERNET / LOUNGE
- 4. OFFICES 7,284 SF

- a. program specialist
- b. training rm. temp
- c. temp / seasonal
- d. comm events, mgr
- e. comm events, sec
- f. box office
- g. secretary
- h. rec coordinator
- i. division head
- j. conference room
- k. cemetery room
- l. expansion
- m. supply workroom
- n. office manager
- o. record storage
- p. comm events open office
- q. pool office
- r. aquatic office
- s. division manager
- t. assistant division
- u. supervisors
- v. meeting room
- w. department head
- x. assistant department head
- y. executive secretary
- z. break room / kitchen

- 5. STORAGE 2,006 SF
- 6. MULTI-PURPOSE ROOM 2,928 SF
- 6a. MULTI-PURPOSE RM STORAGE 323 SF
- 7. REST ROOM
- 8. LARGE CLASSROOM 1,729 SF
- 9. SERVICE CORRIDOR
- 10. MECHANICAL ROOM

- 11. DOCK
- 12. BASKETBALL COURT 8,000 SF
- 13. STORAGE
- 14. MAINTENANCE STORAGE
- 15. PARTY ROOM 481 SF

- 16. FAMILY CHANGE ROOM
- 17. SMALL CLASSROOM 950 SF
- 18. INDOOR POOL 7,035 SF
- 19. POOL STORAGE / EQUIPMENT
- 20. WEIGHT / FITNESS 1,995 SF

- 21. AEROBICS ROOM 2,510 SF
- 22. MAINTENANCE
- 23. JANITOR
- 24. SPINNING ROOM
- 25. SPLASH PAD

- 26. FIRST AID
- 27. LIFE GUARD
- 28. POOL CONTROL POINT
- 29. CHILD CARE
- 30. EXISTING FACILITY
- 30a. MECH / ELECTRICAL / STORAGE

- 31. RUNNING TRACK 3,885 SF
- 32. NEW PARKING
- 33. VAN / BUS PARKING
- 34. TENNIS COURTS
- \* PHASE TWO

--- LINE OF EXISTING BUILDING



THE SANDY CITY PARKS AND RECREATION ADMINISTRATION  
COMMUNITY CENTER AT ALTA CANYON RECREATION CENTER  
CONCEPTUAL SITE / FLOOR PLAN LEVEL ONE

EDA ARCHITECTS / MARCH 14, 2008

# 2008 Upstairs Floor Plan

1. ENTRANCE LOBBY
2. CONTROL POINT
3. INTERNET / LOUNGE
4. OFFICES 7,286 SF

- |                       |                              |
|-----------------------|------------------------------|
| a. program specialist | o. record storage            |
| b. training rm, temp  | p. comm events open office   |
| c. temp / seasonal    | q. pool office               |
| d. comm events, mgr   | r. aquatic office            |
| e. comm events, sec   | s. division manager          |
| f. box office         | t. assistant division        |
| g. secretary          | u. supervisors               |
| h. rec coordinator    | v. meeting room              |
| i. division head      | w. department head           |
| j. conference room    | x. assistant department head |
| k. cemetery room      | y. executive secretary       |
| l. expansion          | z. break room / kitchen      |
| m. supply workroom    |                              |
| n. office manager     |                              |

5. STORAGE 2,006 SF
6. MULTI-PURPOSE ROOM 2,928 SF
- 6a. MULTI-PURPOSE RM STORAGE 323 SF
7. REST ROOM
8. LARGE CLASSROOM 1,729 SF
9. SERVICE CORRIDOR
10. MECHANICAL ROOM

11. DOCK
12. BASKETBALL COURT 8,000 SF
13. STORAGE
14. MAINTENANCE STORAGE
15. PARTY ROOM 461 SF

16. FAMILY CHANGE ROOM
17. SMALL CLASSROOM 950 SF
18. INDOOR POOL 7,035 SF
19. POOL STORAGE / EQUIPMENT
20. WEIGHT / FITNESS 1,995 SF

21. AEROBICS ROOM 2,510 SF
22. MAINTENANCE
23. JANITOR
24. SPINNING ROOM
25. SPLASH PAD

26. FIRST AID
27. LIFE GUARD
28. POOL CONTROL POINT
29. CHILD CARE
30. EXISTING FACILITY
- 30a. MECH / ELECTRICAL / STORAGE

31. RUNNING TRACK 3,885 SF
32. NEW PARKING
33. VAN / BUS PARKING
34. TENNIS COURTS
- \* PHASE TWO
- LINE OF EXISTING BUILDING



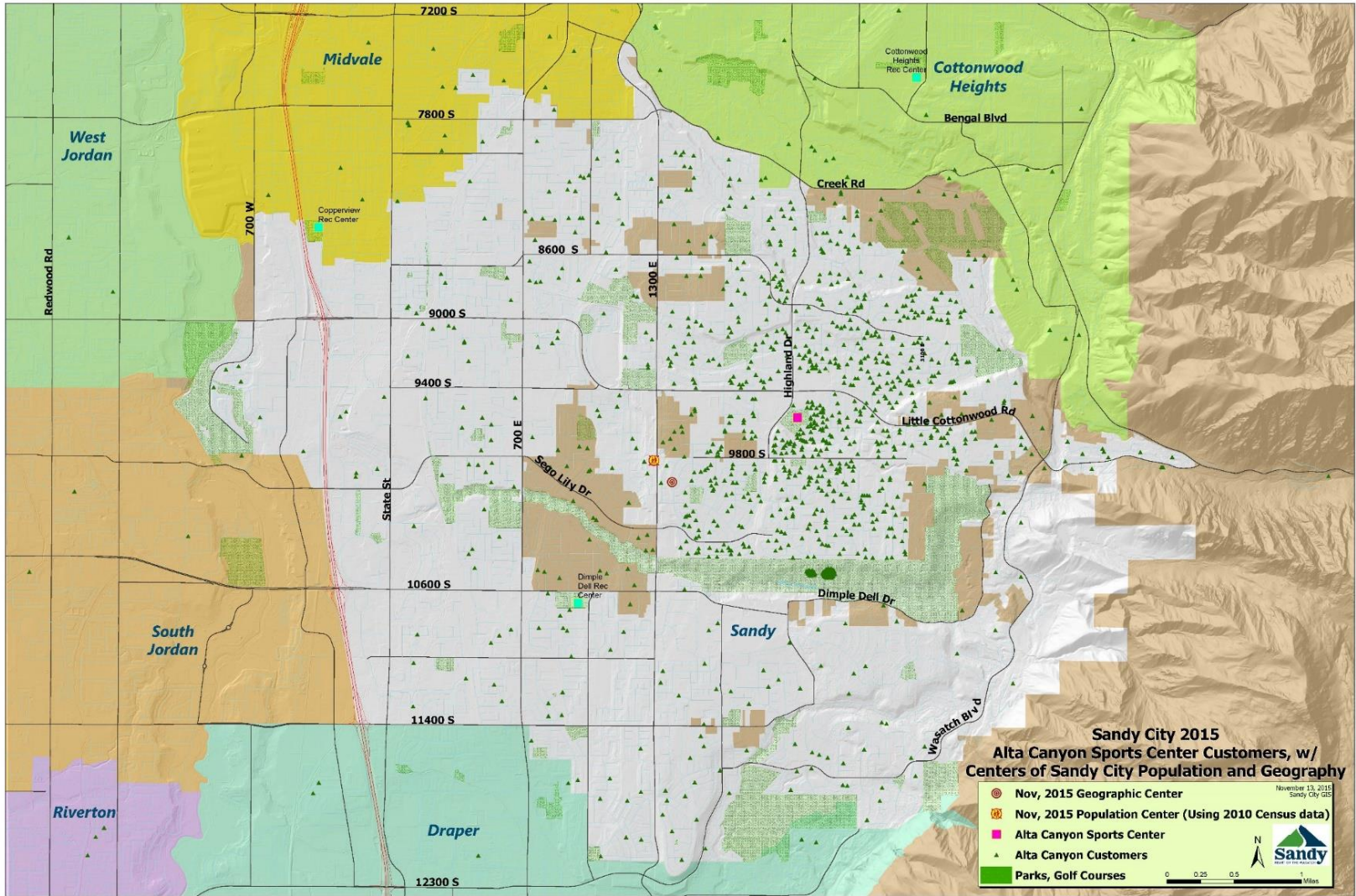
THE SANDY CITY PARKS AND RECREATION ADMINISTRATION  
COMMUNITY CENTER AT ALTA CANYON RECREATION CENTER

CONCEPTUAL SITE / FLOOR PLAN LEVEL TWO

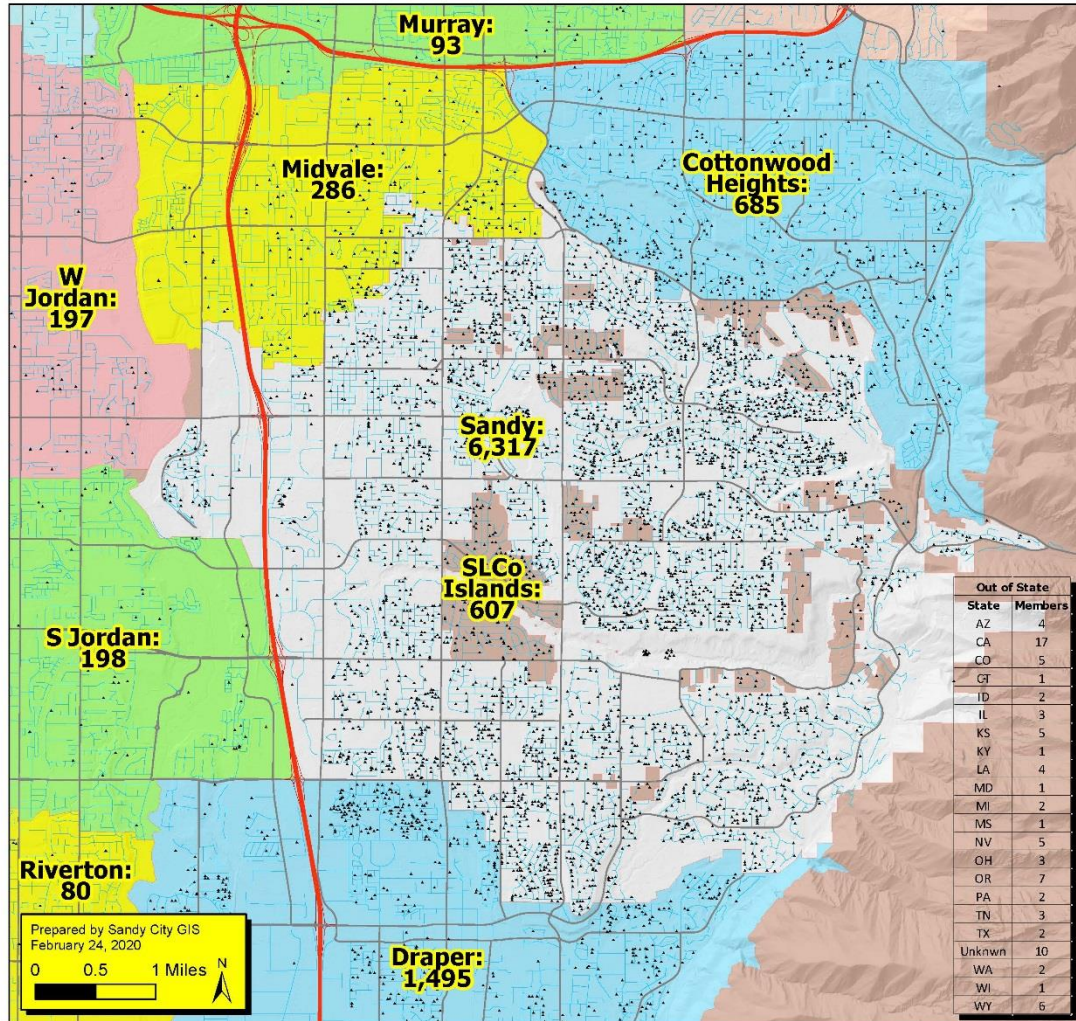


EDA ARCHITECTS / MARCH 14, 2008









## Sandy Recreation Where are the Customers?

Location	Customers	Location	Customers
Sandy	6,317	Stansbury Park	7
Draper	1,495	Magna	6
Cottonwd Heights	685	Layton	5
SLCO Islands	607	Coalville	4
Midvale	286	Pleasant Grove	4
Holladay	286	North Salt Lake	4
South Jordan	198	Morgan	4
West Jordan	197	Syracuse	3
Millcreek City	174	Alpine	3
Salt Lake City	151	Stansbury Pk	2
Murray	93	Springville	2
Out of State	87	Park City	2
Riverton	80	Kaysville	2
Bluffdale	68	Ogden	2
West Valley City	66	Lake Point	2
Herriman	61	Woods Cross	2
Taylorsville	36	Logan	2
Lehi	33	Unknown	2
South Salt Lake	24	Flower Mound	1
Provo	24	Tooele	1
American Fork	15	Clearfield	1
Saratoga Springs	14	St. George	1
Kearns	13	Santaquin	1
Orem	10	Salem	1
Highland	10	Escalante	1
Eagle Mountain	9	Grantsville	1
Corinne	9	Roy	1
Bountiful	9	Erda	1
<b>Data from 2018-2019 records</b>	<b>Grand Total:</b>	<b>11,125</b>	

# Alta Canyon Current Assets

## District Assets

- Land - 9 acres (up to 7 residential lots)
- Tennis courts - 4
- Building – 21,500 sq. ft.
- Splash pad, slide, pavilion, & Olympic-size pool

## Sandy City Assets

- Park (9.5 acres)
- Sports fields - 2
- Pavilion
- Playground
- Volleyball courts



# Completed Projects

- Prior to 2000 - Racquetball court converted to cardio room
- 2000 - Parking lot
- 2005 - Roof replaced
- 2008 - Pool re-plastered
- 2009 - Hot tubs rebuilt
- 2010 - Splash pad & slide added
- 2012 - Exit gate installed
- 2013 - Carpet, paint, fire sprinkler upgrade
- 2015 - Locker space converted to classroom
- 2015 - Building sign and marquee installed
- 2015-2017 - Lights upgraded to LED
- 2016 & 2017 - New buses purchased
- 2017 - Snack Bar remodeled

# Current Operations

- 6 full time and up to 160 seasonal/part-time employees
- Programs
  - Preschool, Karate, Racquetball Leagues and Tournament, Tennis Leagues and Lessons, Swim Team, Lessons, and Certification Courses, Lego Classes,...
- Events
  - Triathlon
  - Half marathon
  - Dippin' Dogs

# Current Operations Continued

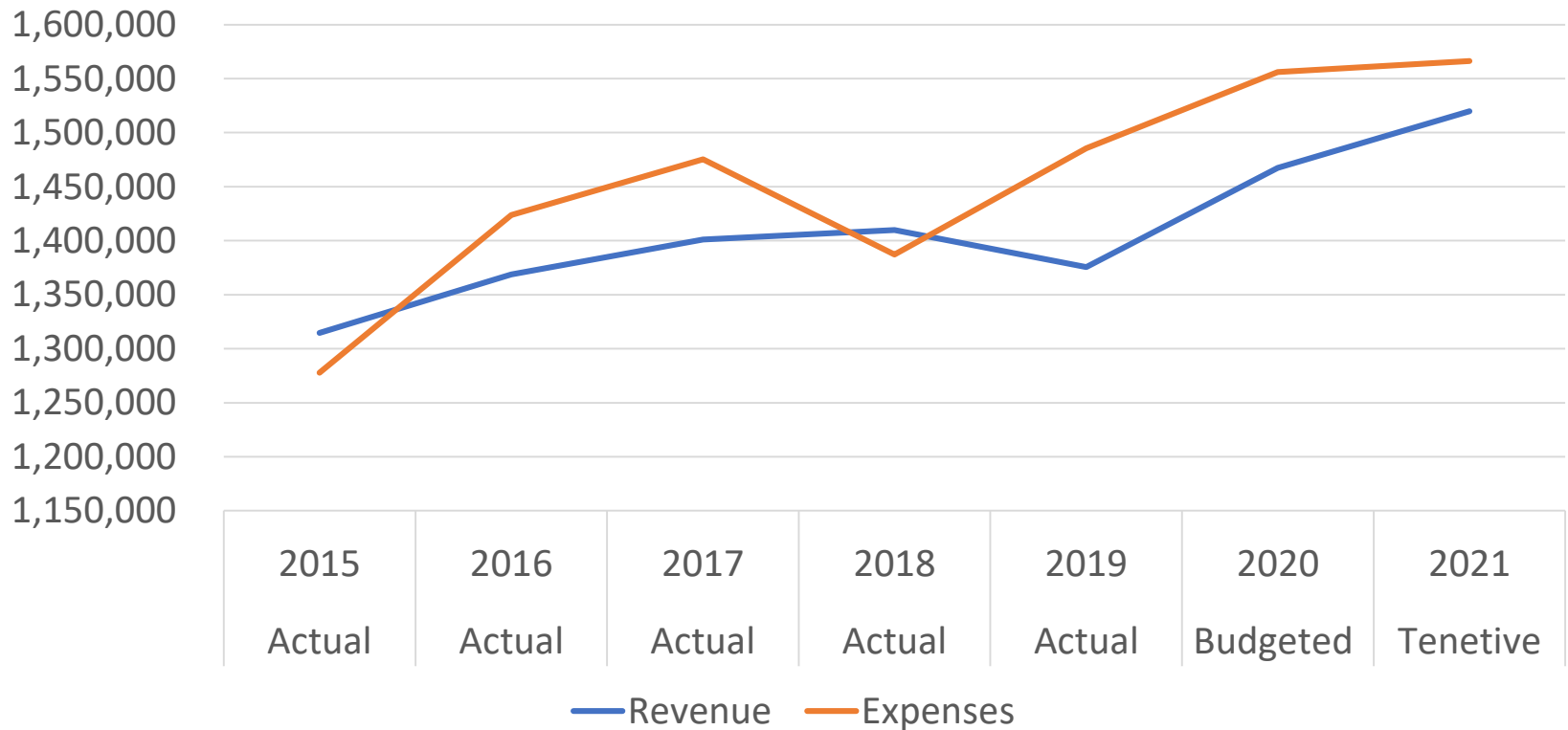
- Fitness
  - Fitness Classes
  - Personal training
- Childcare
  - Before and After School Care
  - Summer Camps
  - Childwatch
- Facility Rentals
- Membership: 2,268 annual memberships – 32% outside the district
- Daily Fee users: 16,738 day passes (per year) – 34% outside the district

# Current Concerns

- Lack of space
- Lack of in-demand amenities (indoor multi-use courts, indoor jogging path, meeting space, etc.)
- Aging infrastructure
  - Out of date mechanical systems
  - HVAC (fans, pumps, boilers, chiller, control system, etc.)
  - Swimming pool pumps, filters, etc.
- Safety/Security limitations

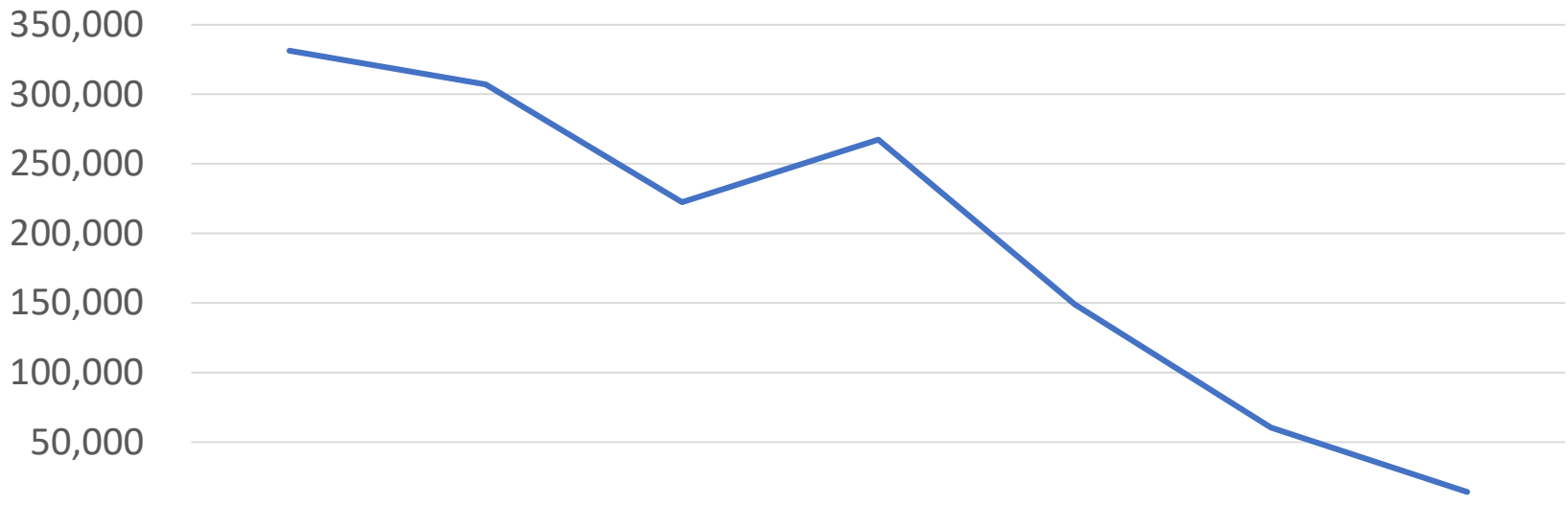
# Financial Overview

## Alta Canyon Sports Center Revenue vs. Expenses



# Carryover Balance

Alta Canyon Sports Center



2015	2016	2017	2018	2019	2020	2021
Actual	Actual	Actual	Actual	Actual	Budgeted	Tenative

— Carryover Balance @ Year End

# Current District Tax Overview

## Annual Cost

Tax District/Area	Tax Rate	Annual Tax Revenue Co	ANNUAL TAX ON \$400,000 HOME
Alta Canyon	0.000178%	\$ 368,230	\$ 39.16
Cottonwood Heights Parks & Recreation	0.000965%	\$2,359,382	\$212.30
Oquirrh Recreation & Parks	0.000916%	\$2,644,415	\$201.52



# Alta Canyon Future?

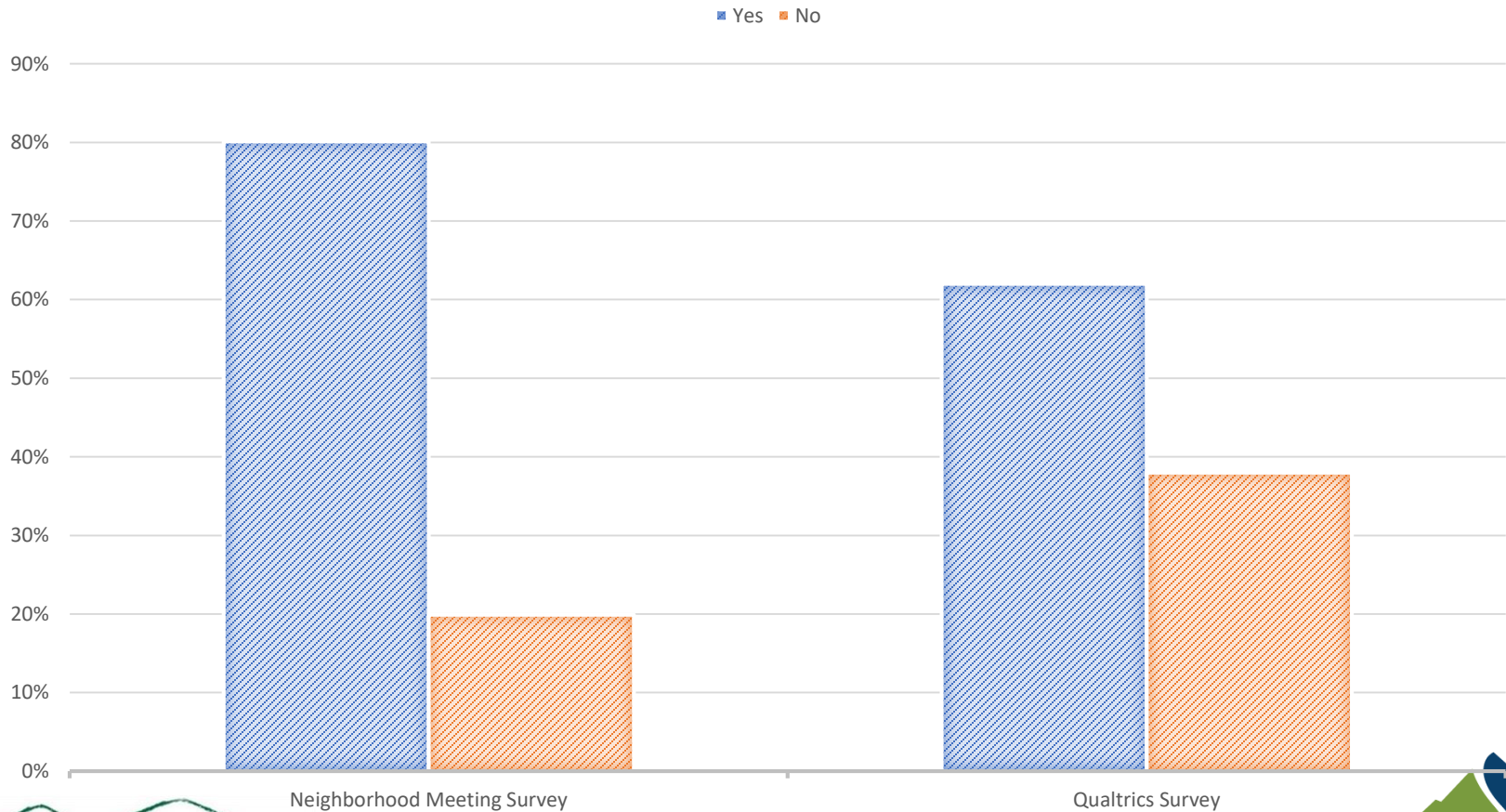
- Existing Conditions
- Expansion/Remodel of Center
- Programs and Services
- District
  - Retain or dissolve
  - Add to city services by implementing a city-wide Parks and Recreation Tax



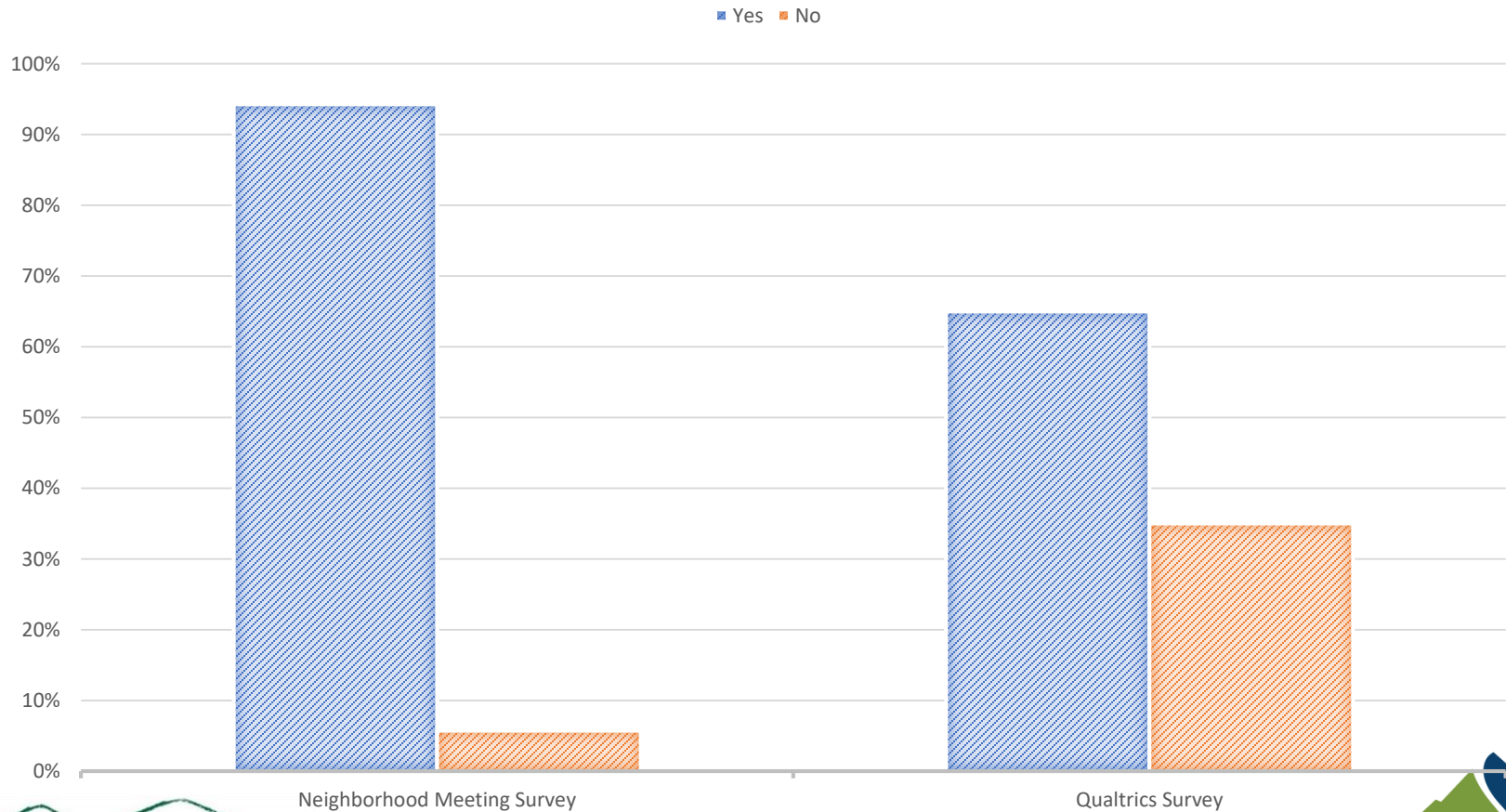
# Survey Results from Neighborhood meetings and Qualtrics



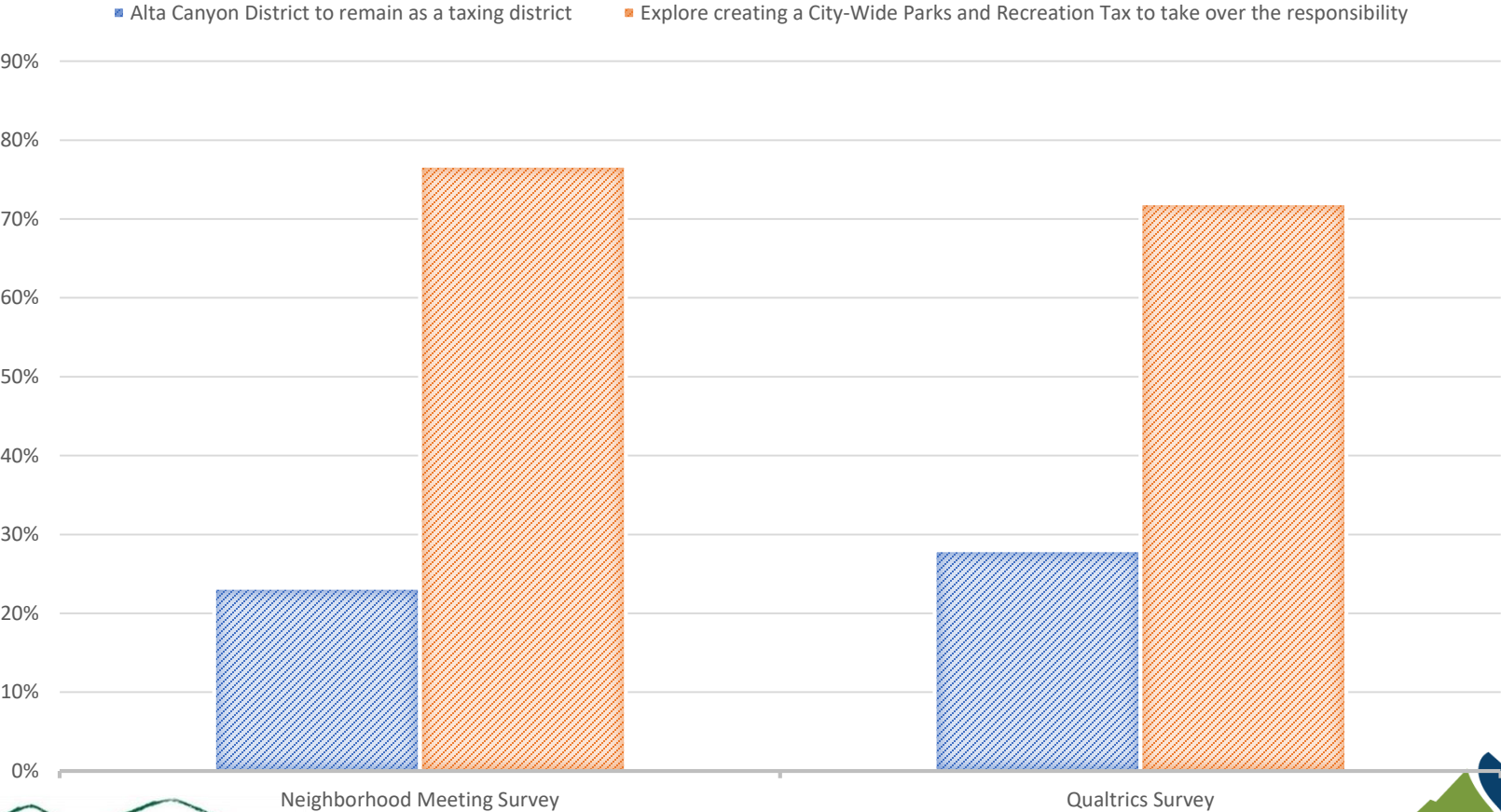
# Do you currently live in the Alta Canyon Special District?



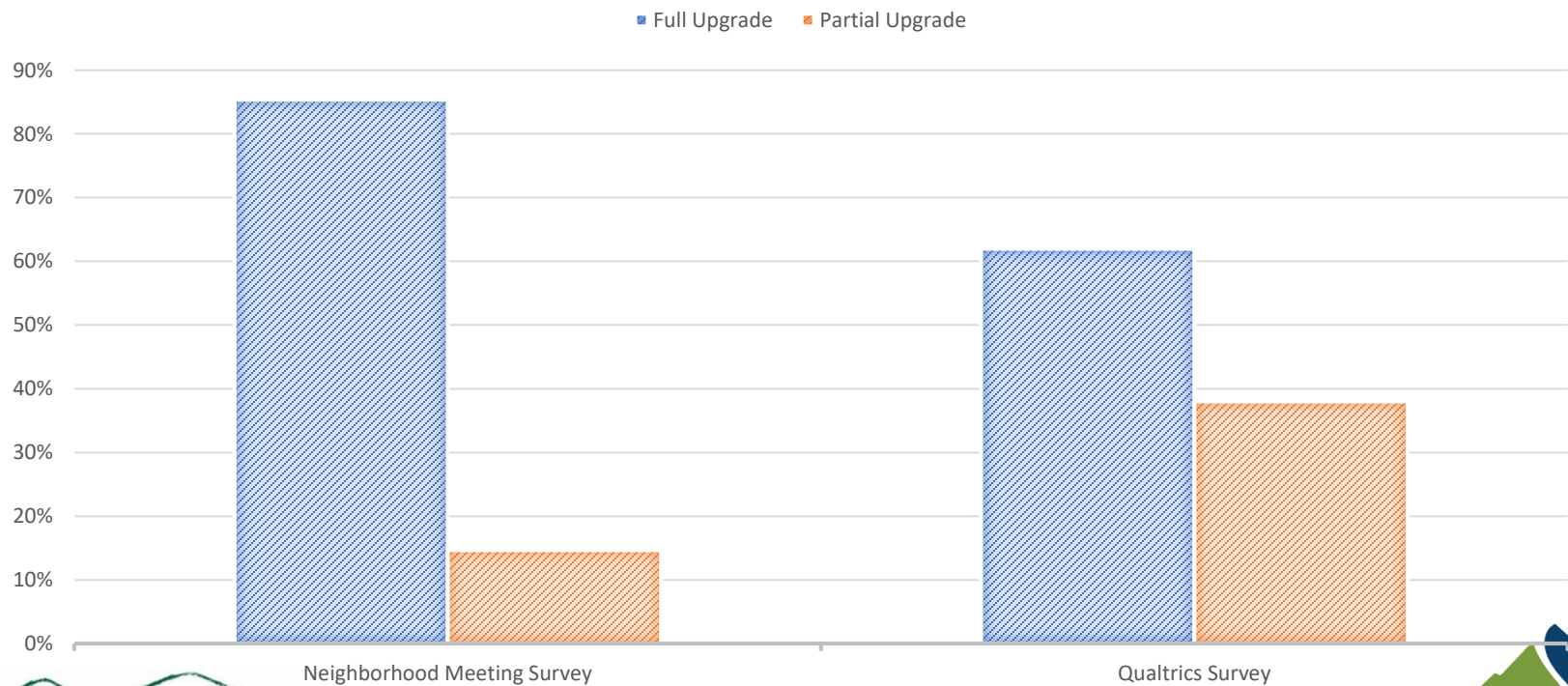
# Have you or a family member used the facility in the past year?



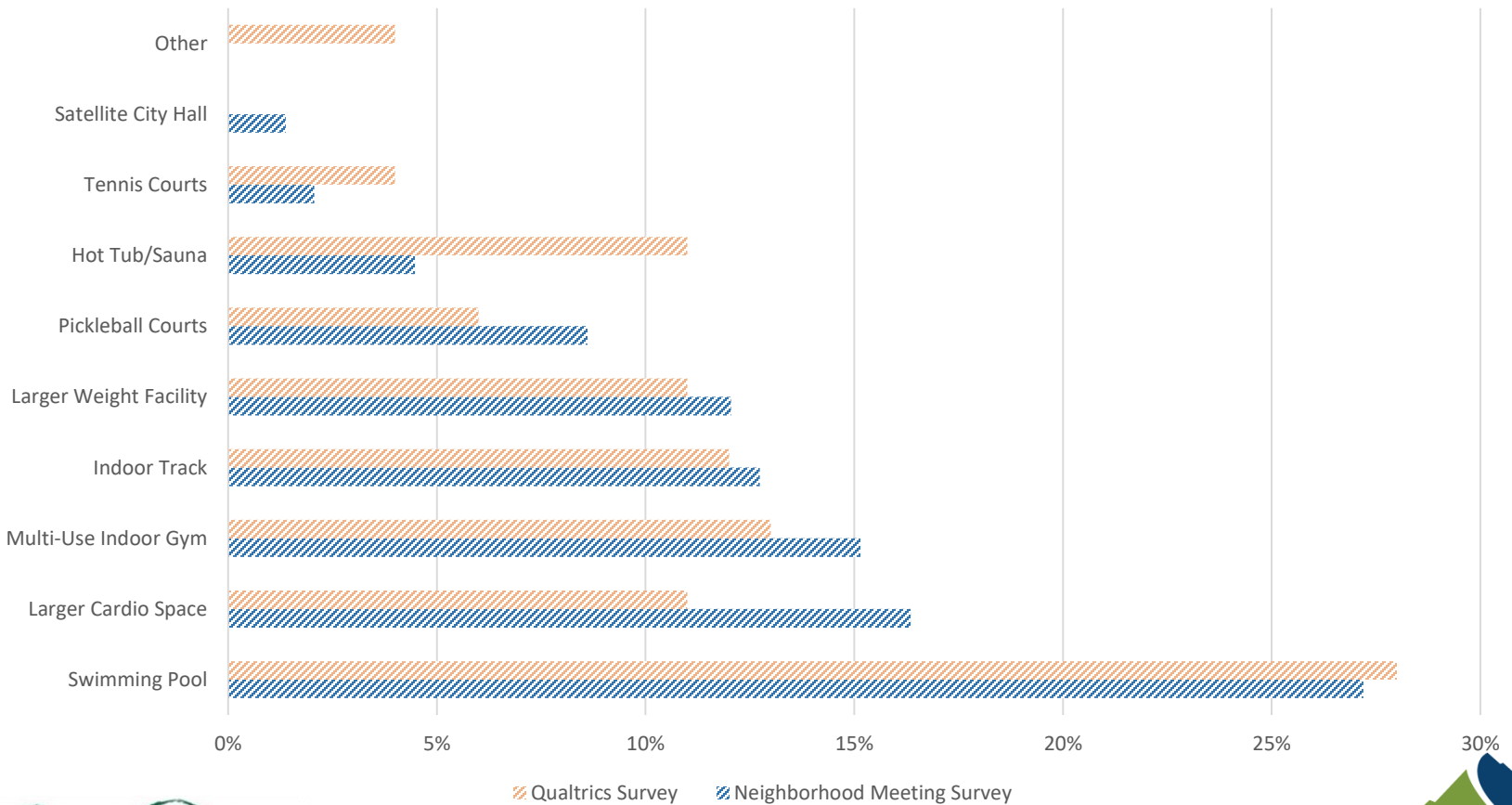
# Which of the following would you prefer?



# Assuming we implemented a City-Wide Parks and Recreation Tax, would you be in favor of a full or partial upgrade?



# Which of the following would you pay money to use year round? (Select top 3 choices)



# Which would you prefer?

