



Sandy & Trans Jordan Waste Transfer Facility



&

SLC Household Hazard Waste Collection Facility



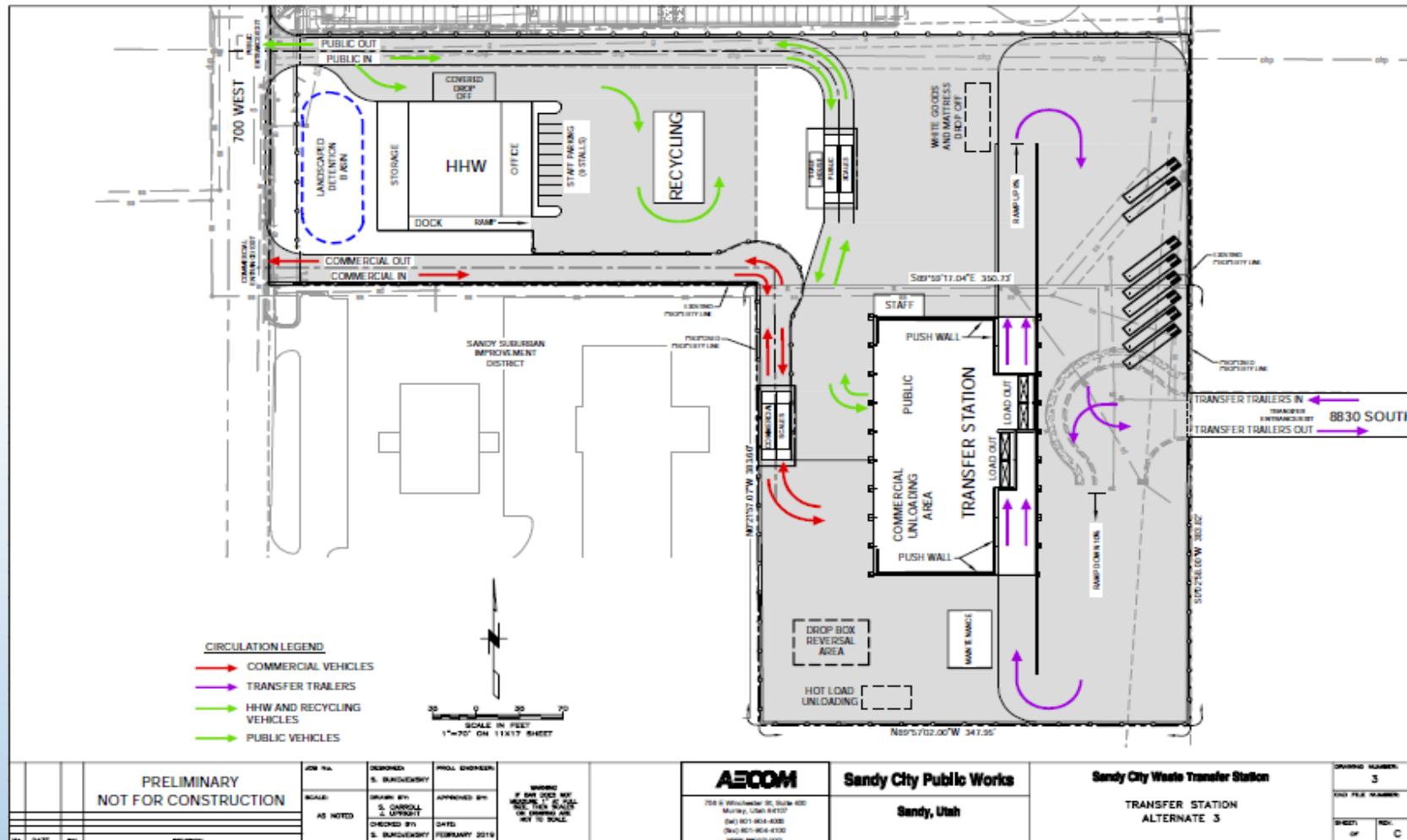
Recall...

- Sandy City is a member city (50+ years) of Trans Jordan Landfill.
- Trans Jordan Landfill
 - Has approximately 12 years of life remaining.
 - Bought in to Bay View Landfill in 2016. Life = 85+ years.
 - Anticipates a need for two Transfer Stations w/ east location vic. Sandy.
- Business plan with preliminary layout produced in 2011 and updated spring of 2019. Plan based on building facility at Sandy Public Works.
 - Anticipates a partnership with Trans Jordan. Construct in 3 to 5 years.
 - Collocate S.L. Cnty Household Hazardous Waste Facility. Construct 1 to 2 years.

Desired Capacities/Capabilities

- Incoming tonnage: 200,000 tons/year
- Commercial inbound loads/day: 150 trucks
- Resident loads/day weekends: 400 vehicles (average day)
- Transfer loads outbound/day (28 tons/load): 27

Desired Site Plan



Lot's of Questions!

- Dust control
- Odor control
- Traffic control
- Pest control
- Location/convenience
- Architecture/appearance
- Operations and hours of operations
- Etc.

Let's get answers. Let's go to Seattle and look at the best ones in the country!

Seattle Waste Transfer Stations Tour



First and foremost:
We need to bring our
waste expert!

Seattle Waste Transfer Stations Tour

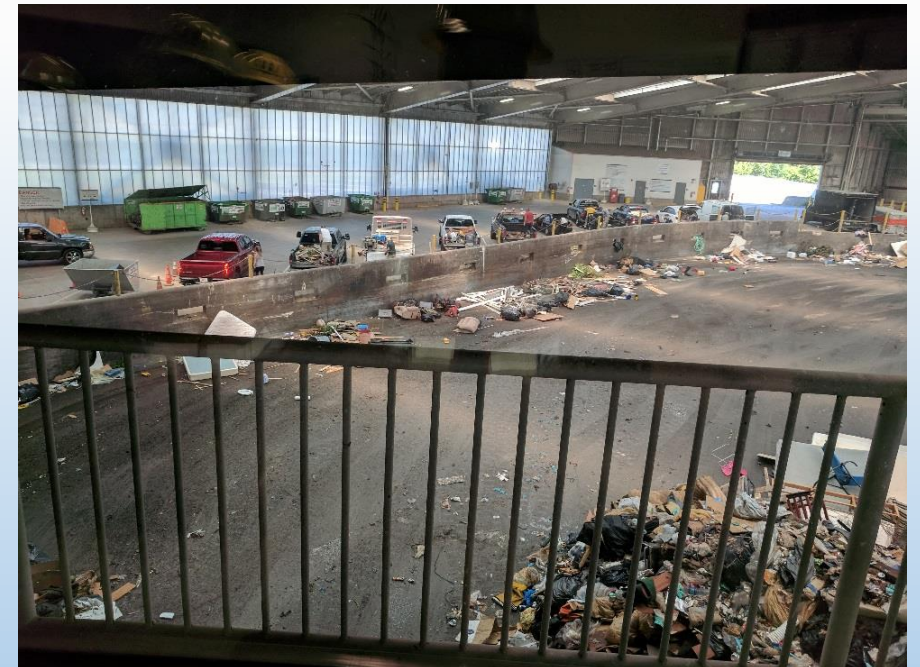
Attendees:

- Jaren Scott, Executive Dir., Trans Jordan
- Mike Gladbach, Board of Dir., Trans Jordan
- Brooke Christensen, Councilwoman, Sandy City Council
- Dustin Fratto, Management Analyst, Sandy City Council
- Renee Christensen, Trustee, SSID
- Mark Hurst, Trustee, SSID
- Scott Harrington, Trustee, SSID
- Tracy Cowdell, Asst. Gen. Mgr., SSID
- Jared Oldroyd, Engineer, SSID

King County Transfer Stations Tour



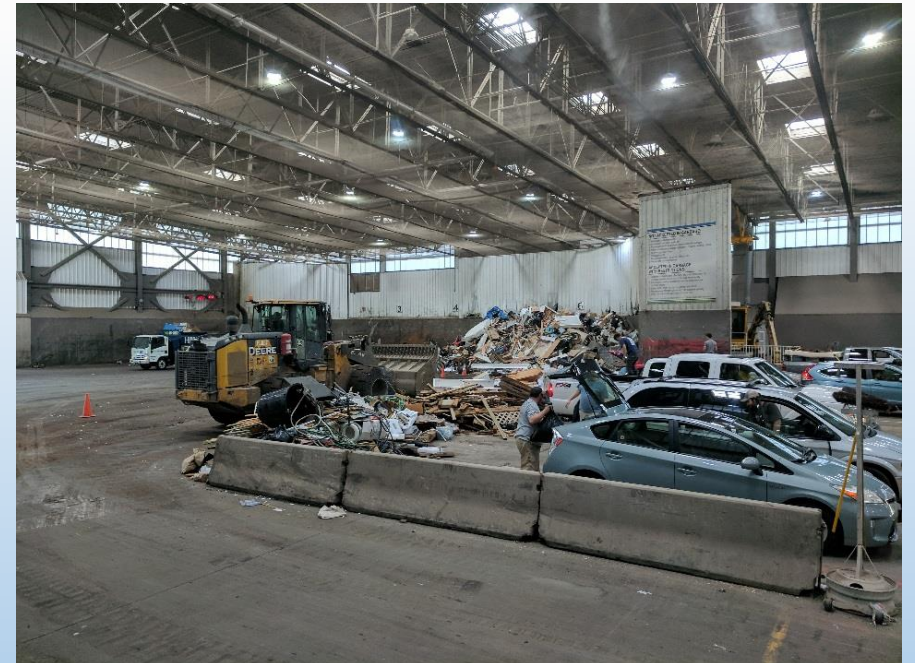
- Opened in 2012 (replaced 1977 facility)
- 24 hour operation 5-days/week, 9 hours/day weekends
- Base fee is \$25.25 (first 320 lbs), then \$151.06/ton.
\$25 unsecured load fee.
- 286,000 tons/year
- Curved Dump wall
- Recycling inside for self-haul.
Recycling outside for all others.



King County Transfer Stations Tour



- Built in 2016
- Open 6:30-4:00 M-F, 8:30-5:30 weekends
- Base fee is \$25.25 (first 320 lbs), then \$151.06/ton.
\$25 unsecured load fee.
- 142,000 tons/year
- Flat floor (no wall)
- All recycling inside
- Translucent wall and roof panels



Seattle North Transfer Station Tour



- Built in 2013
- Open 8:00 to 5:30, 7 days/week
- Base fee \$30 (first 420 lbs), then \$145/ton.
\$5 unsecured load fee.
- 150,000 tons/year (270,000 tons/year capacity)
- Push Wall
- All recycling inside
- Translucent wall and roof panels
- Integrated into Residential/Light Commercial area
 - Multiple Restaurants & Retail
 - \$1 million homes located across the street
 - Brooks Shoes Headquarters



Seattle South Transfer Station Tour



- Built in 2013
- Open 8:00 to 5:30, 7 days/week
- Base fee is \$30 (first 420 lbs), then \$145/ton.
\$5 unsecured load fee
- 400,000 tons/year
- Push Wall
- All recycling inside
- Translucent wall and roof panels



Transfer Stations Tour

Lessons Learned/Takeaways

- Dust & Odor - critical and controllable. Cleanliness, air vac, misting and deodorant spray for “hot” loads.
- Pest control – controlled by good operations, hired professionals.
- Traffic control – traffic management plan. Q’ing space, separation of commercial and self-haul.
- Location – we are in an industrial zone, convenient to interchange, convenient to residents
- Architecture – can be what we want within budget considering location
- Operations – Trans Jordan currently 7AM-6PM Mon-Sat

Next Steps

1. Schedule (flesh this out):
 - HHW Collection Facility – 1 to 2 years out
 - Transfer Station – 3 to 5 years out
2. Agreements:
 - HHW Collection Facility – Draft Lease Agreement with SLC under review
 - Transfer Station – currently working under Letter of Intent
3. Land:
 - Have approximately 4 acres at Public Works
 - Need additional land from SSID (purchase? lease?).
4. Design:
 - Address Lessons Learned/Takeaways (previous slide)
5. Construction:
 - HHW to start in 2020
 - Transfer Station to start approximately 2022-2024