

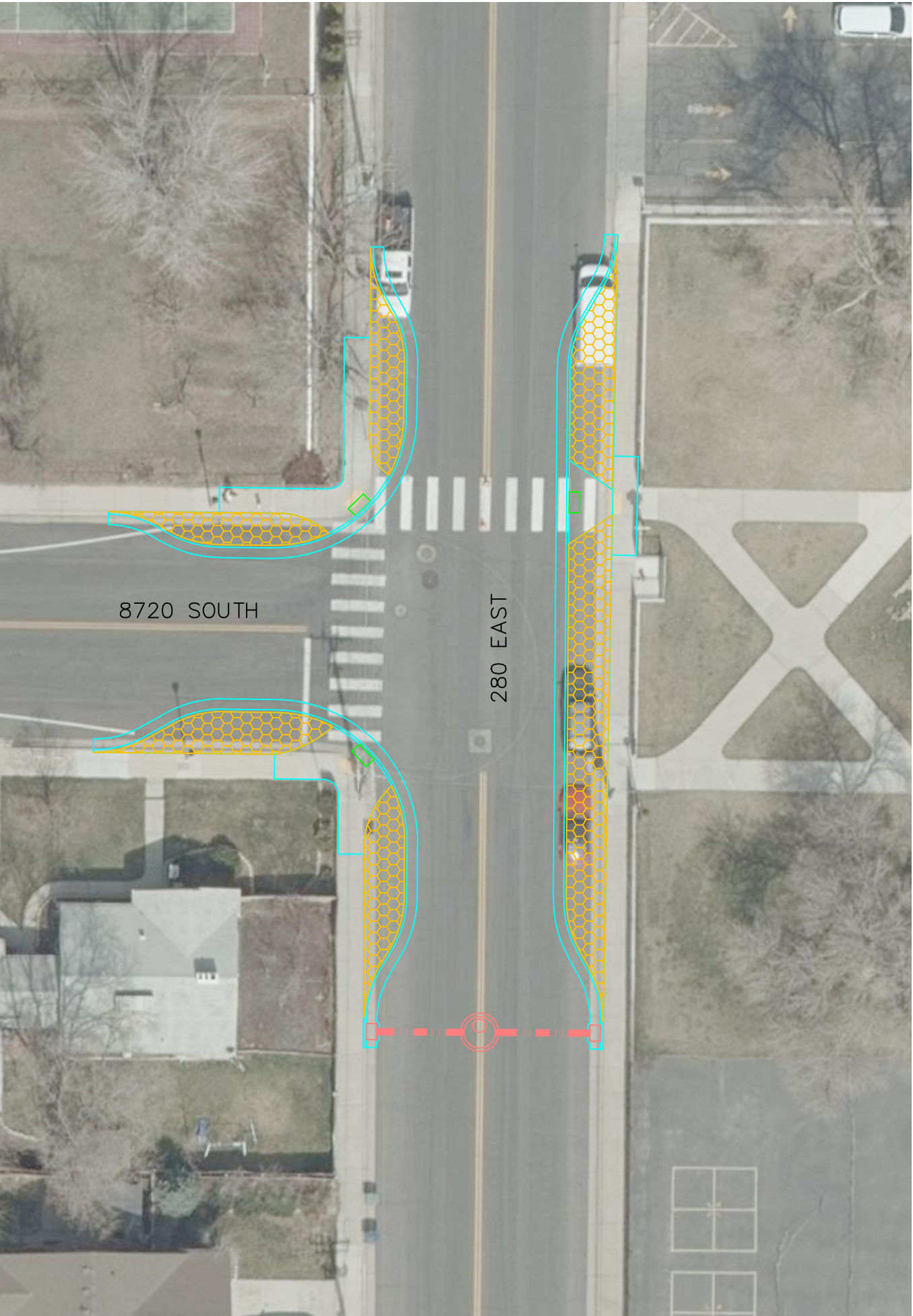
### Traffic Calming Narrative

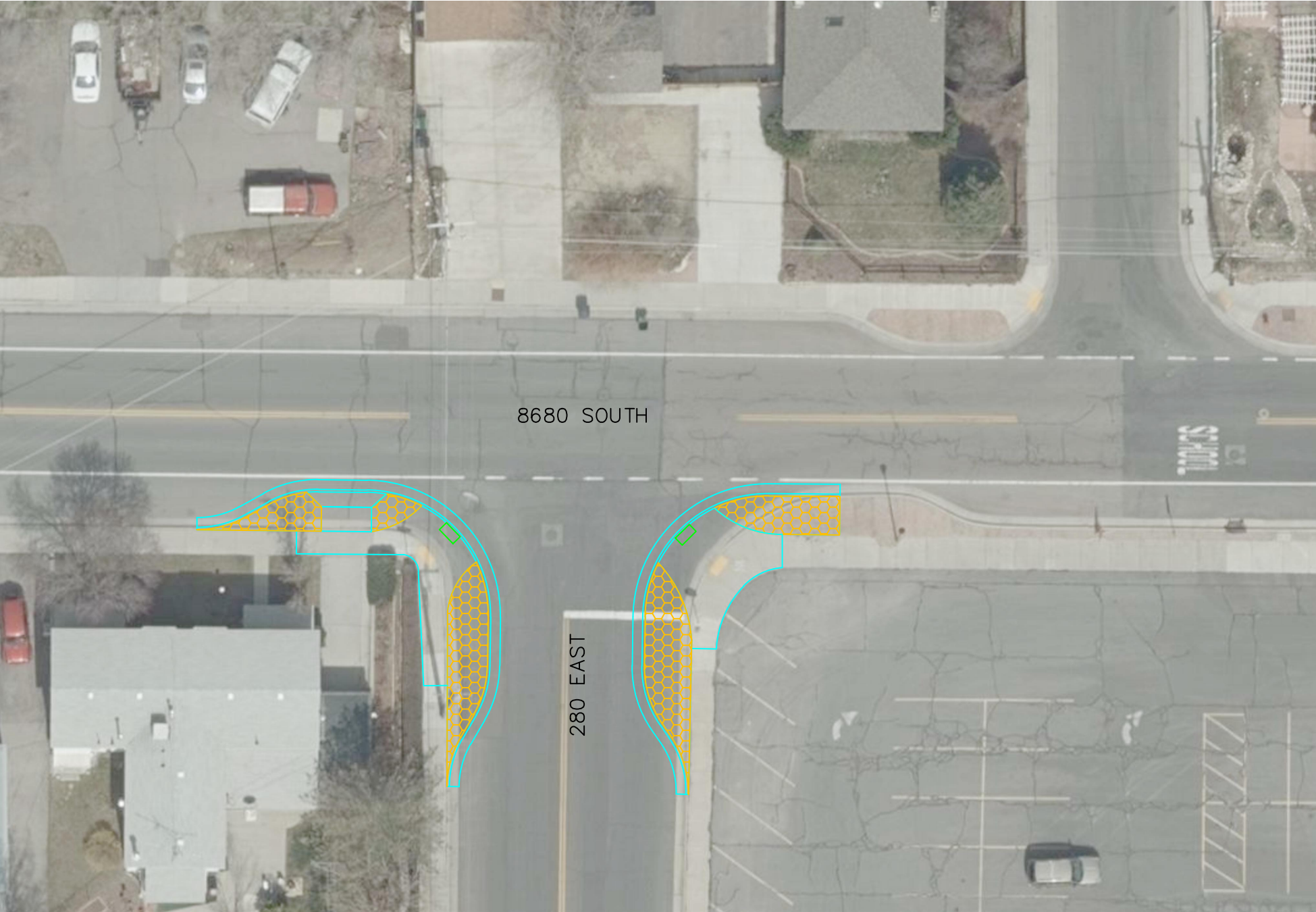
Sandy Elementary (8725 S 280 E) is located in the middle of Sandy City's Historic District. The school is situated between two major collector streets (8680 S and 8800 S) and one minor collector street (280 E). Each of these streets have seen an increase in traffic and increased speeds. We are requesting the use of CDBG funds for the 2021 and/or 2022 years to install bulb-outs in three or more areas to create safer environments where school crossings are located for Sandy Elementary and general pedestrian crossing. The bulb-outs will help motorists slow down and will decrease the distance that pedestrians will be in the street when crossing.

Area 1 – 8720 S 280 E - The engineer's estimate for this area is approximately \$105,000.

Area 2 – 8680 S 280 E - The engineer's estimate for this area is approximately \$43,000.

Area 3 – 8680 S (In front of school) - The engineer's estimate for this area is approximately \$30,500.

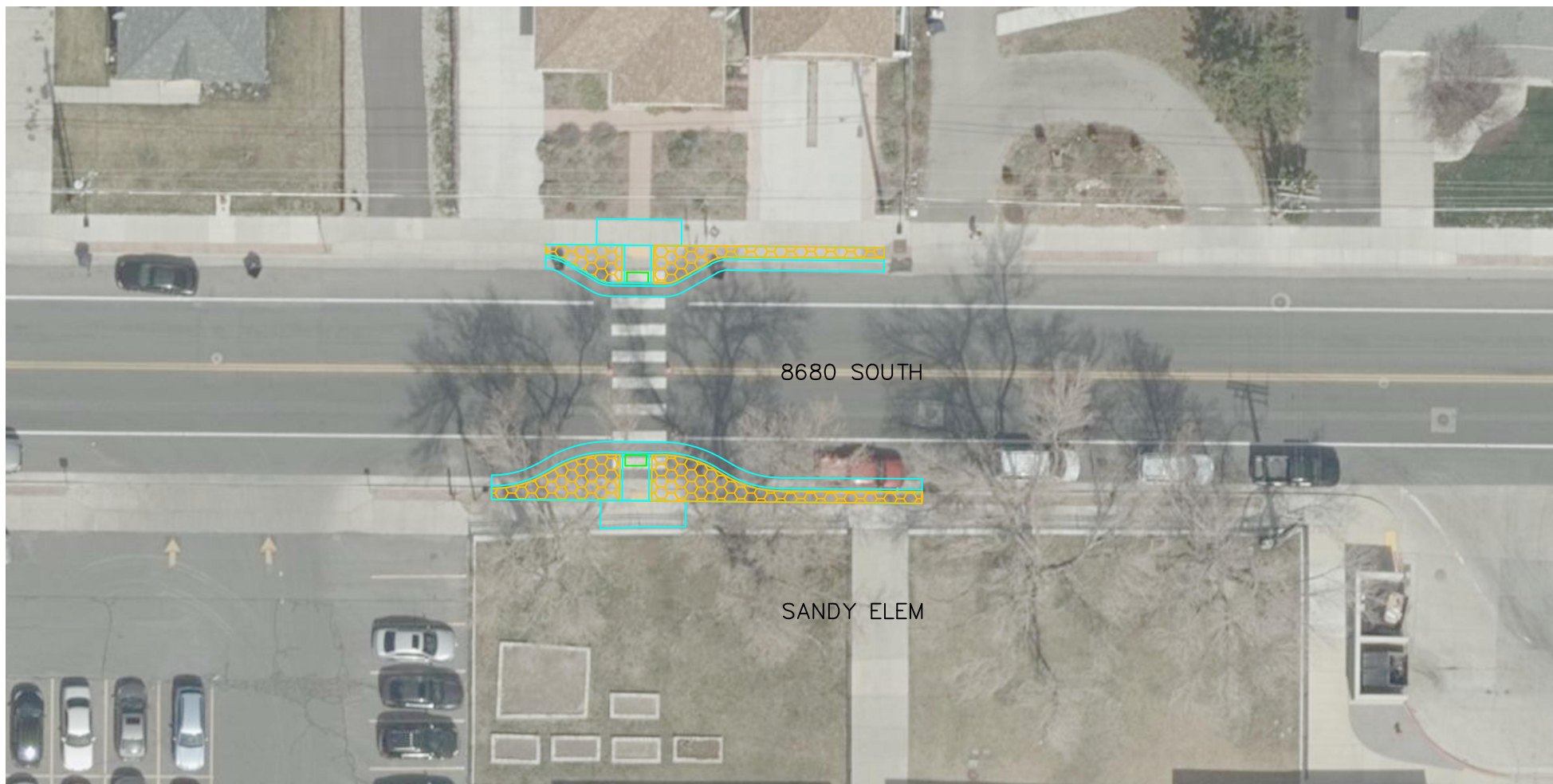




8680 SOUTH

280 EAST





8680 SOUTH

SANDY ELEM