

CDBG Committee

Locust Street Narrative

Locust Street E is a residential street located in Historic Sandy at approximately 8850 S and runs from 280 E to 700 E with 11 individual streets connecting to it. In the early 1990's, through a City capital improvement project, improvements were installed consisting of curb and gutter, sidewalk, and drive approaches, etc. However, at the time there wasn't sufficient funds to complete all the wanted improvements and some areas were left incomplete. We are requesting the use of CDBG funds to complete the improvements that were started over 25 years ago and create a continuous and safe walking path out of the roadway between 280 E and 700 E, along the south side of Locust Street and partially down 400 E. In addition by connecting the missing pieces of curb and gutter, it will improve drainage and minimize chances of flooding.

280 - 358 East

This portion of roadway didn't receive any improvements in the project from the early 90's. All shoulder improvements are planned in this area, including curb and gutter, sidewalk, property connections, and some utility relocations. These improvements will connect the sidewalk on both ends at 280 E and where the sidewalk abruptly ends at approximately 374 E and allow pedestrians to stay out of the street. Some property acquisition is needed to install the improvements. The engineer's estimate for this area is approximately \$162,000. Modifications to the design and additional costs for consultant fees and right-of-way acquisition increased the cost from the original budget of \$120,000 (approved for 2020).

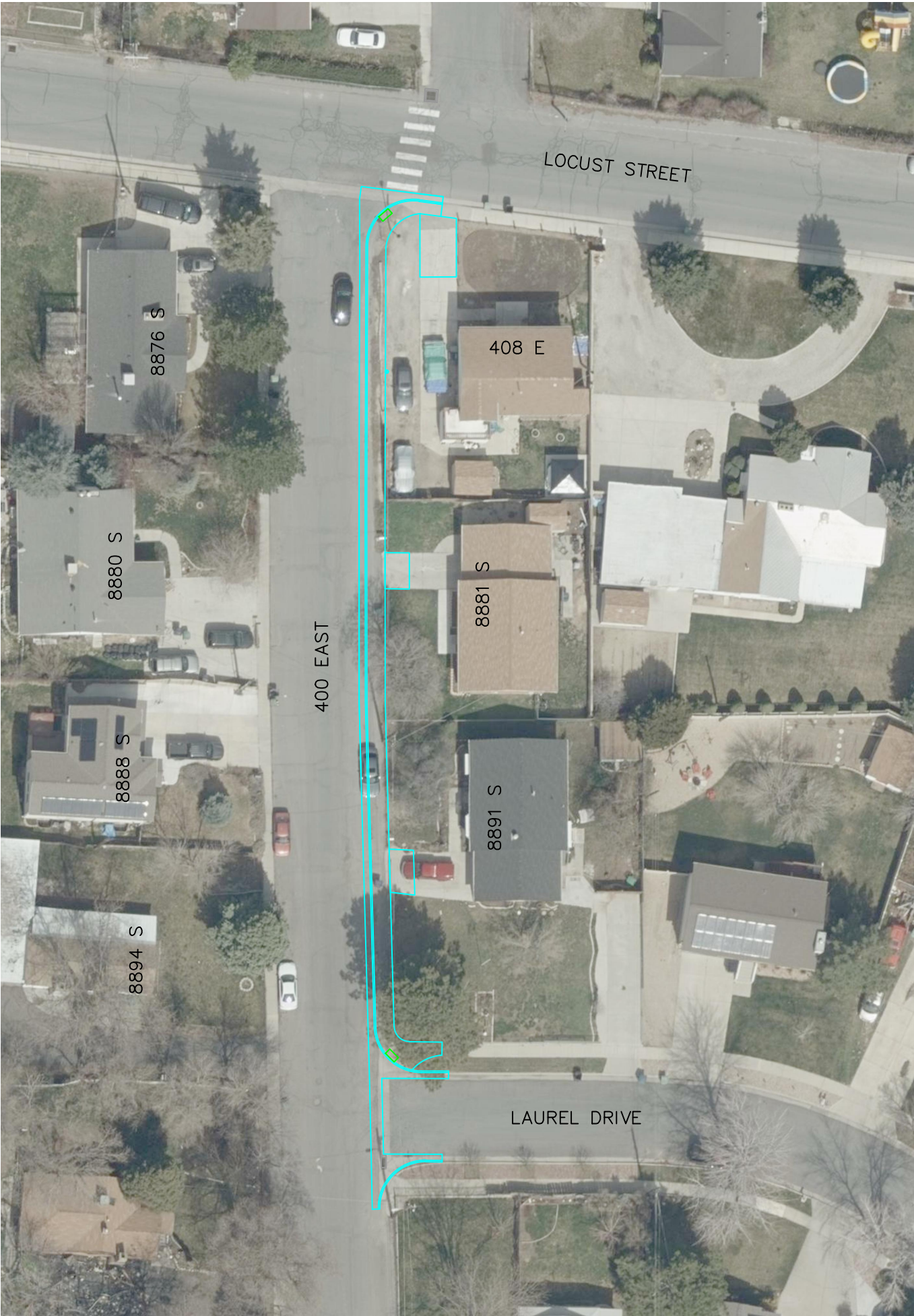
400 East (Locust St to Laurel Dr)

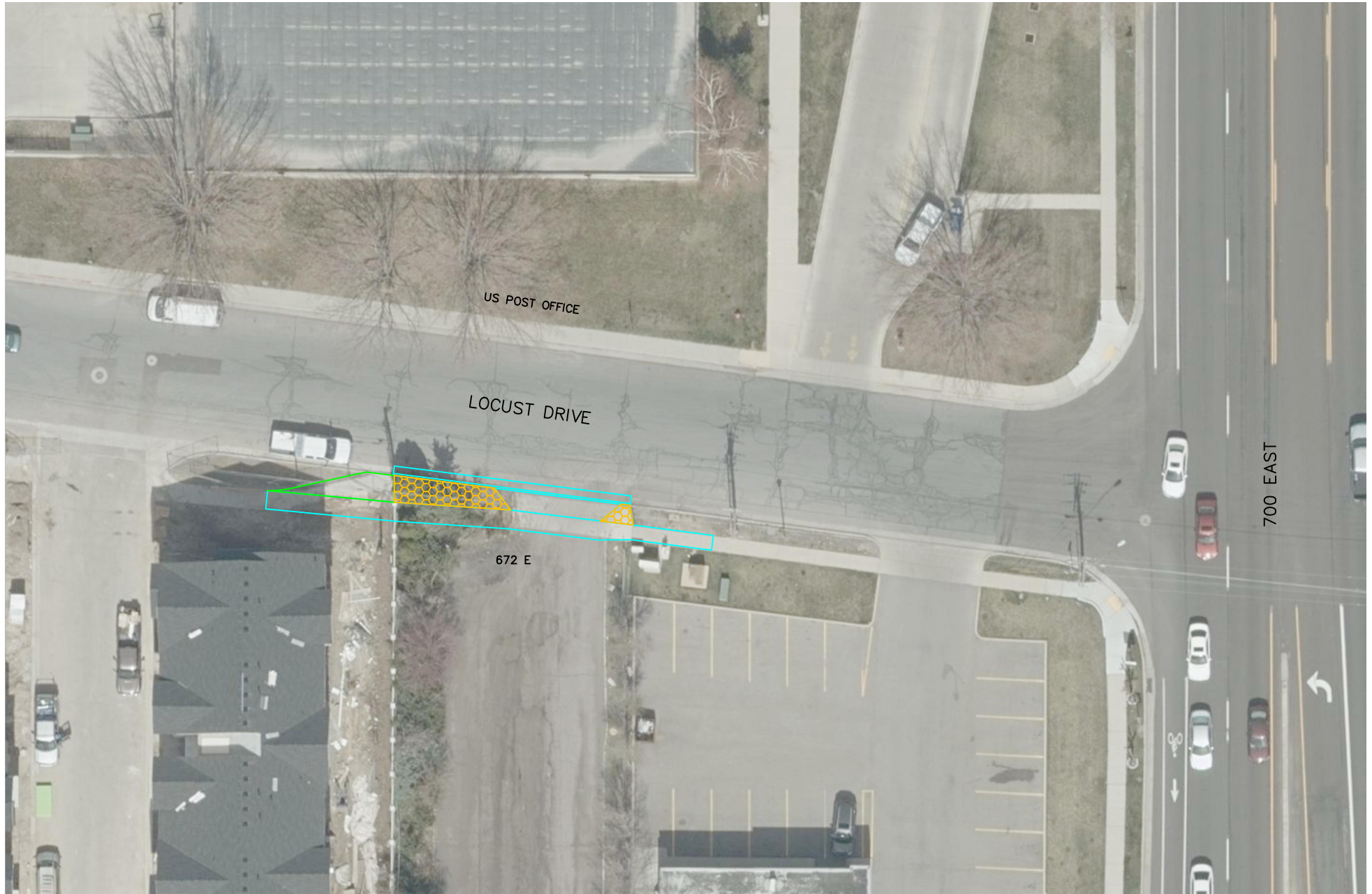
Sandy Elementary (Canyons School District) has inquired about improvements to their Safe Neighborhood Access Plan (SNAP) - 400 East is one of the routes for kids/students to walk to and from school. The scope of work is to install the pedestrian ramps at the corners of Locust and Laurel streets and install curb and gutter and sidewalk between the ramps on the east side of 400 E. Also parts of the waterways would be replaced adjacent to each ramp so that storm water doesn't puddle in the street. The engineer's estimate for this area is approximately \$87,000.

672 East

This is a commercial property near 700 E and south of the US post office. The scope of work is to remove overgrown vegetation along the street frontage, install curb and gutter for better drainage and to convey storm water away from the property, install sidewalk to keep pedestrians from walking out in the street, and install a new drive approach for access to the property. The engineer's estimate for this area is approximately \$33,000.







US POST OFFICE

LOCUST DRIVE

672 E

700 EAST