

Sandy City - City Council
Agenda

Annexations

1. Hirschi Annexation
3319 E. Wasatch Pines Ln. [Community #30 - Granite]

ANEX-2-16-4972

Annexation

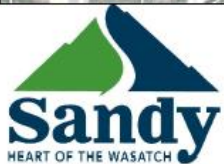
Hirschi Annexation

- ANEX-2-16-4972
- 3319 E. Wasatch Pines Ln.



Hirschi Annexation
3319 E. Wasatch Pines Ln.

PRODUCED BY
THE COMMUNITY DEVELOPMENT DEPARTMENT
ANDREW KING, SENIOR PLANNER



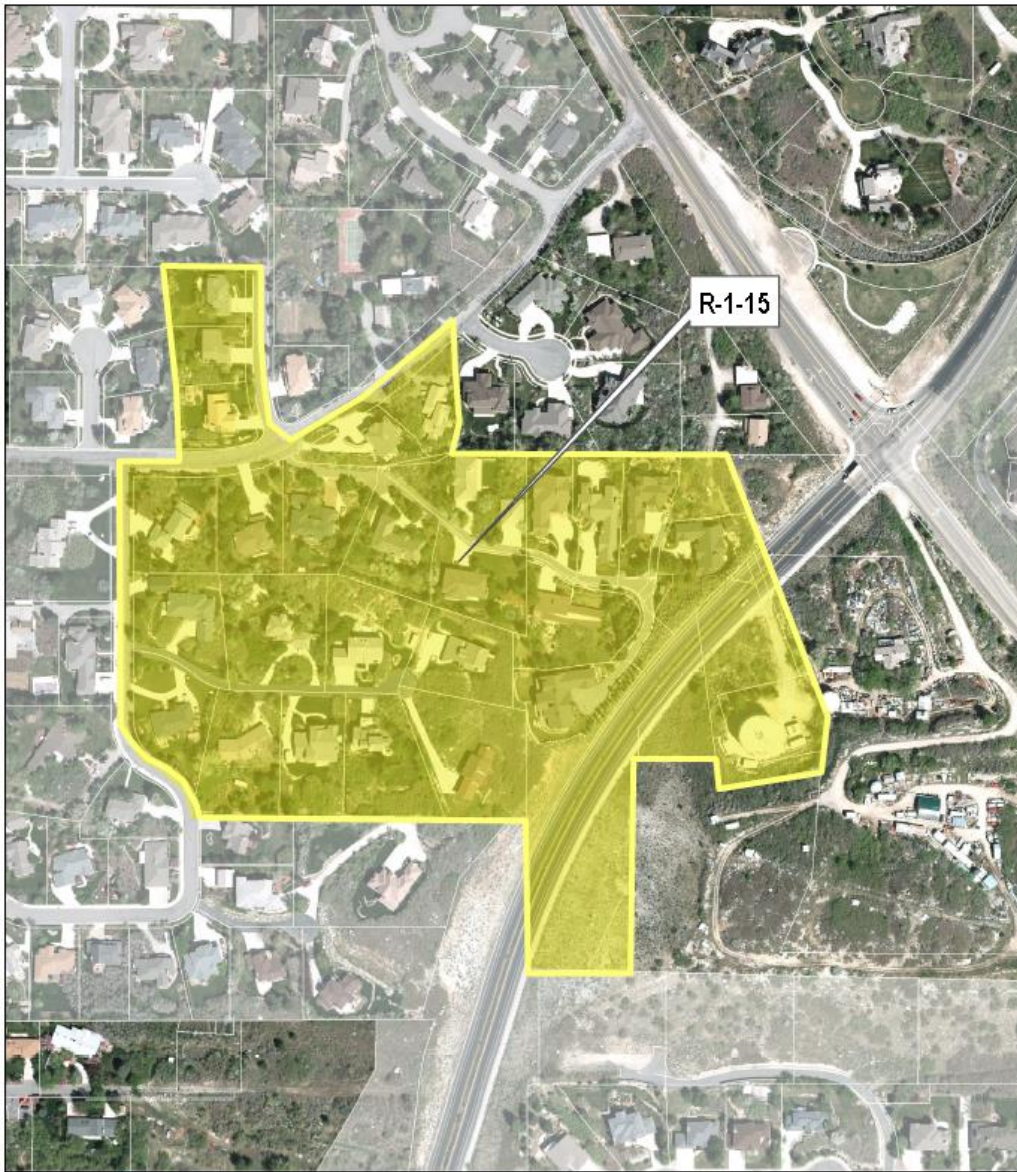
City Council



Annexation

Zoning

- Entire annexation zoned R-1-15



Hirschi Annexation
3319 E. Wasatch Pines Ln.

PRODUCED BY
THE COMMUNITY DEVELOPMENT DEPARTMENT
ANDREW KING, SENIOR PLANNER

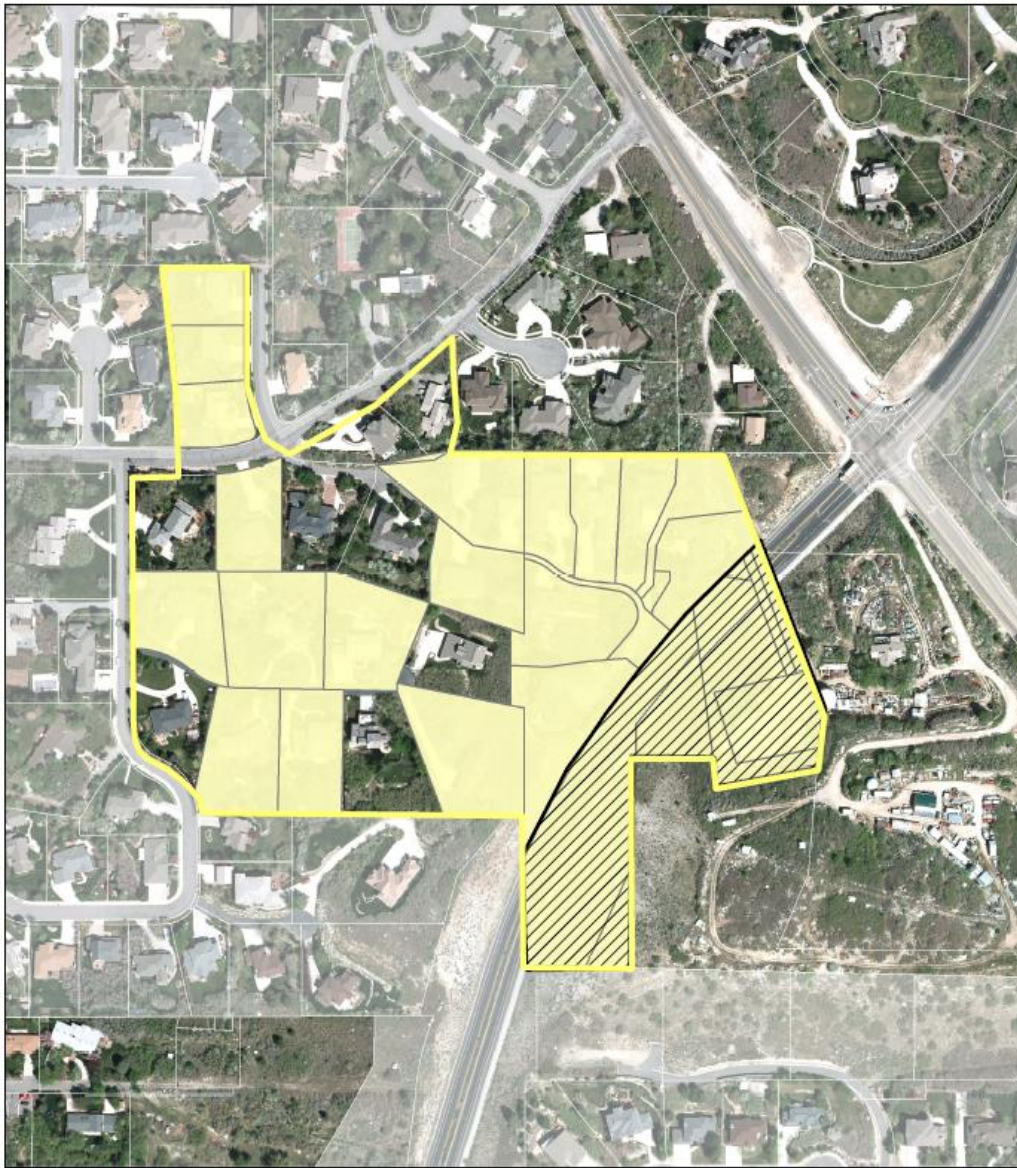


City Council



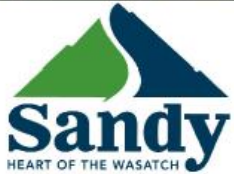
Annexation


Consent Map



Hirschi Annexation
3319 E. Wasatch Pines Ln.

PRODUCED BY
THE COMMUNITY DEVELOPMENT DEPARTMENT
ANDREW KING, SENIOR PLANNER



 Consent
 Public Property

City Council

