

SALT LAKE COUNTY UTAH

WHITE CITY CANAL TRAIL

MARCH 2019

BID SET



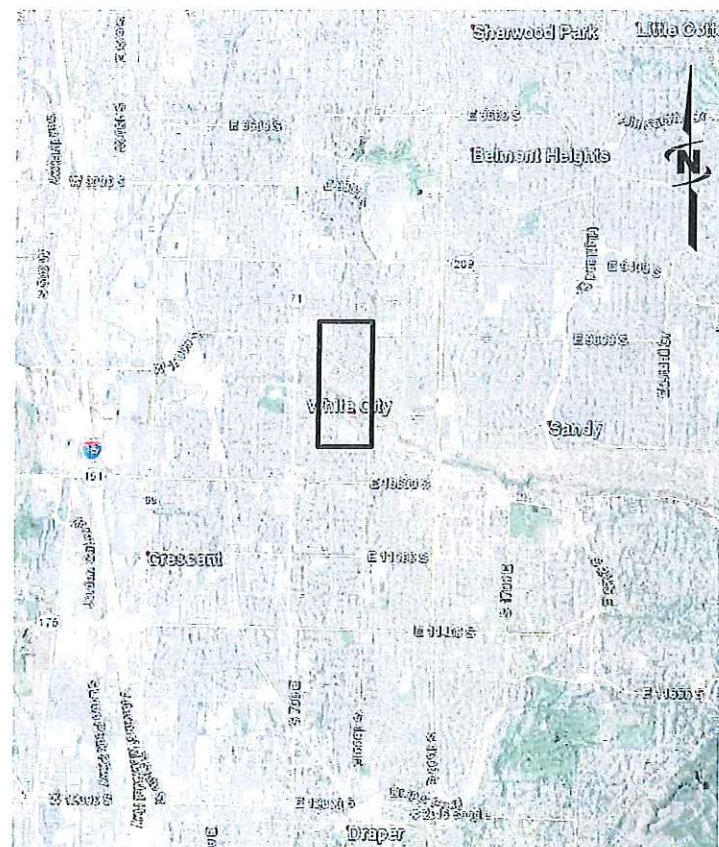
PROJECT NO. 55-15-107
SALT LAKE COUNTY CONTRACT NO. PAR56294



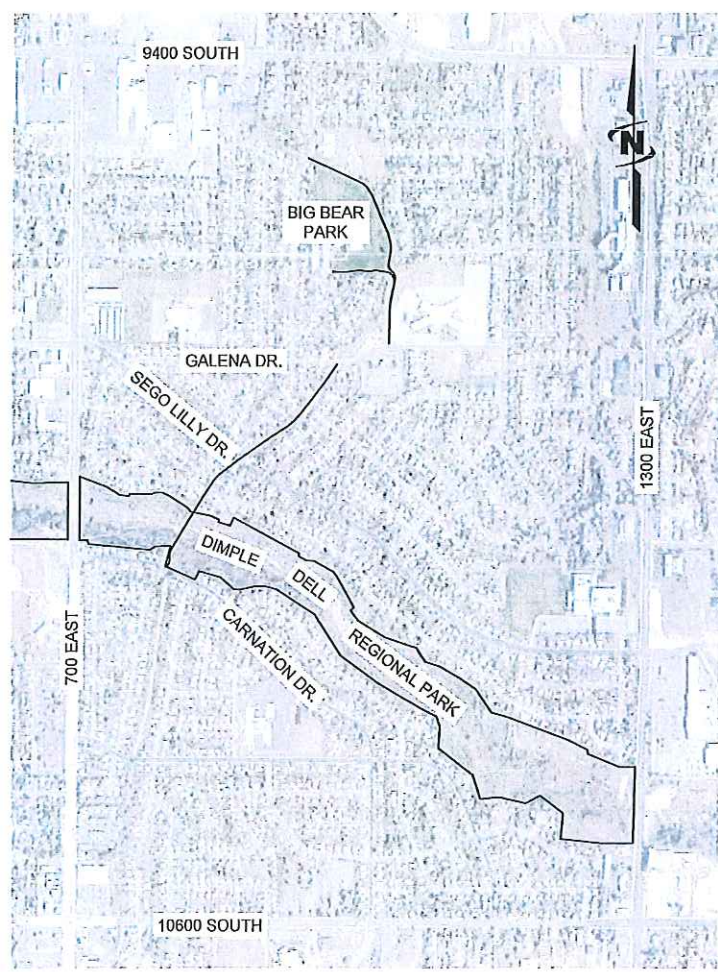
J-U-B ENGINEERS, INC.

466 North 900 West, Kaysville, UT 84037
p 801 547 0393 f 801 547 0397 w www.jub.com

OTHER J-U-B COMPANIES



AREA MAP



VICINITY MAP

Sheet List Table	
Sheet Number	Sheet Title
G-001	COVER SHEET
G-002	GENERAL NOTES
G-003	LINE LEGEND - SHEET NUMBERING - DETAIL IDENTIFIERS
G-004	SYMBOL LEGEND - ABBREVIATIONS
V-101	SURVEY CONTROL
C1-101	SITE PLAN
C1-102	SITE PLAN
C1-103	SITE PLAN
C2-101	GRADING PLAN
C2-102	GRADING PLAN
C-501	SITE DETAILS
C-502	INTERSECTION DETAILS
C-503	COLLAPSIBLE BOLLARD DETAILS
C-504	RAMP DETAILS
C-505	TRAIL CROSS SECTIONS - BID ALTERNATIVE 1
S-101	SITUATION AND LAYOUT 1 OF 2
S-102	SITUATION AND LAYOUT 2 OF 2
S-103	BORING LOGS 1 OF 3
S-104	BORING LOGS 2 OF 3
S-105	BORING LOGS 3 OF 3
S-106	FOUNDATION PLAN
S-107	DRILLED PILE DETAILS
S-108	ABUTMENT AND WINGWALL LAYOUT
S-109	ABUTMENT DETAILS
S-110	WINGWALL DETAILS
S-111	PIER LAYOUT
S-112	PIER PILE CAP DETAILS
S-113	PIER CAP AND COLUMN DETAILS
S-114	BEARING LAYOUT AND DETAILS
S-115	DECORATIVE FENCE DETAILS 1 OF 2
S-116	DECORATIVE FENCE DETAILS 2 OF 2



PLD

NOTICE AND DISCLAIMER

THE PLANS AND/OR SPECIFICATIONS (DOCUMENTS) ARE THE PROPERTY OF J-U-B ENGINEERS, INC. ("J-U-B") AND BY USING THE DOCUMENTS YOU AGREE TO BE BOUND BY THE TERMS AND CONDITIONS IN THIS NOTICE AND DISCLAIMER.

THE USE OF THE DOCUMENTS CREATES NO DUTY IN CONTRACT, TORT, EQUITY OR OTHERWISE OF J-U-B TO THE USER. THE USER SHALL NOT (i) DISSEMINATE THE DOCUMENTS, OR ANY PART THEREOF, TO OTHERS WITHOUT THE WRITTEN CONSENT OF J-U-B, OR (ii) USE THE DOCUMENTS, OR ANY PART THEREOF, FOR ANY USE OTHER THAN AS DESIGNATED HEREIN FOR THE INTENDED PROJECT. THE DOCUMENTS ARE NOT INTENDED FOR USE IN CREATING DTM FOR GRADING OR EARTHWORK, SURVEY STAKING LAYOUT (UNLESS SPECIFICALLY IDENTIFIED AS SUCH IN THE DOCUMENTS), OR PROPERTY BOUNDARY LAYOUTS.

J-U-B AND ITS AGENTS SHALL NOT BE LIABLE FOR ANY DAMAGES OR CLAIMS ARISING OUT OF THE UNAUTHORIZED USE OR MISUSE OF THE DOCUMENTS, OR ANY PART THEREOF, WHETHER SUCH DAMAGE OR CLAIM IS BASED IN CONTRACT, TORT OR OTHERWISE. THE USER HEREBY RELEASES AND SHALL DEFEND, INDEMNIFY AND HOLD J-U-B AND ITS AGENTS HARMLESS FROM ANY DAMAGES OR CLAIMS ARISING OUT OF, OR RELATED IN ANY WAY TO, THE USER'S UNAUTHORIZED USE OR MISUSE OF THE DOCUMENTS, OR ANY PART THEREOF.

IF THE DOCUMENTS ARE PROVIDED IN ELECTRONIC FORMAT, THE ELECTRONIC DOCUMENTS ARE SUBJECT TO THE PROVISIONS OF J-U-B'S "ELECTRONIC DOCUMENT/DATA LIMITED LICENSE" FOUND AT EDOCS.JUB.COM.

LAST UPDATED: 3/1/2019

SHEET NUMBER:

G-001

Plot Date: 06/20/19 1:24 PM. Plotted By: Greg Graves
 Date Created: 04/17/2017. P:\PROJECTS\JUB\SALT LAKE COUNTY\55-15-107 WHITE CITY TRAIL\CAD\SSHEETS\VLS-15-107_V101.DWG



JUB
 J-U-B ENGINEERS, INC.
 J-U-B ENGINEERS, INC.
 466 North 900 West
 Kaysville, Utah 84037
 Phone: 801.547.0398
 Fax: 801.547.0397
 www.jub.com

BID SET

 GREGORY GRAVES
 104416
 LANDSCAPE ARCHITECT

REUSE OF DRAWINGS
 THIS DOCUMENT, AND THE IDEAS AND DESIGNS INCORPORATED HEREIN, AS AN INSTRUMENT OF PROFESSIONAL SERVICE, IS THE WHOLE OR PART, FOR ANY OTHER PROJECT WITHOUT THE EXPRESS WRITTEN AUTHORIZATION OF J-U-B ENGINEERS, INC.

NO.	REVISION	DESCRIPTION	BY	DATE

WHITE CITY CANAL TRAIL
SALT LAKE COUNTY UTAH
 SURVEY CONTROL
 FILE: 55-15-107_V101
 JUB PROJ. #: 55-15-107
 DRAWN BY: TAG
 DESIGN BY: GHG
 CHECKED BY: GHG
 ONE INCH
 AT FULL SIZE, IF NOT ONE INCH SCALE ACCORDINGLY
 LAST UPDATED: 2/27/2019
 SHEET NUMBER:
V-101



J-U-B ENGINEERS, INC.

J-U-B ENGINEERS, INC.
466 North 900 West
Kaysville, Utah 84037
Phone: 801.547.0998
Fax: 801.547.0987
www.jub.com

BID SET

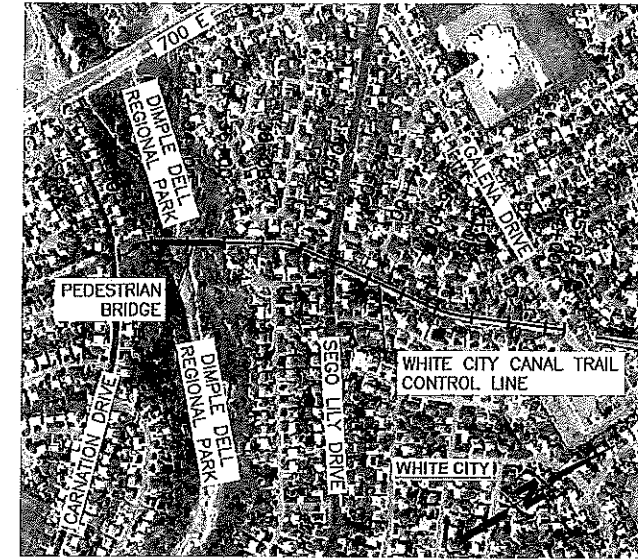
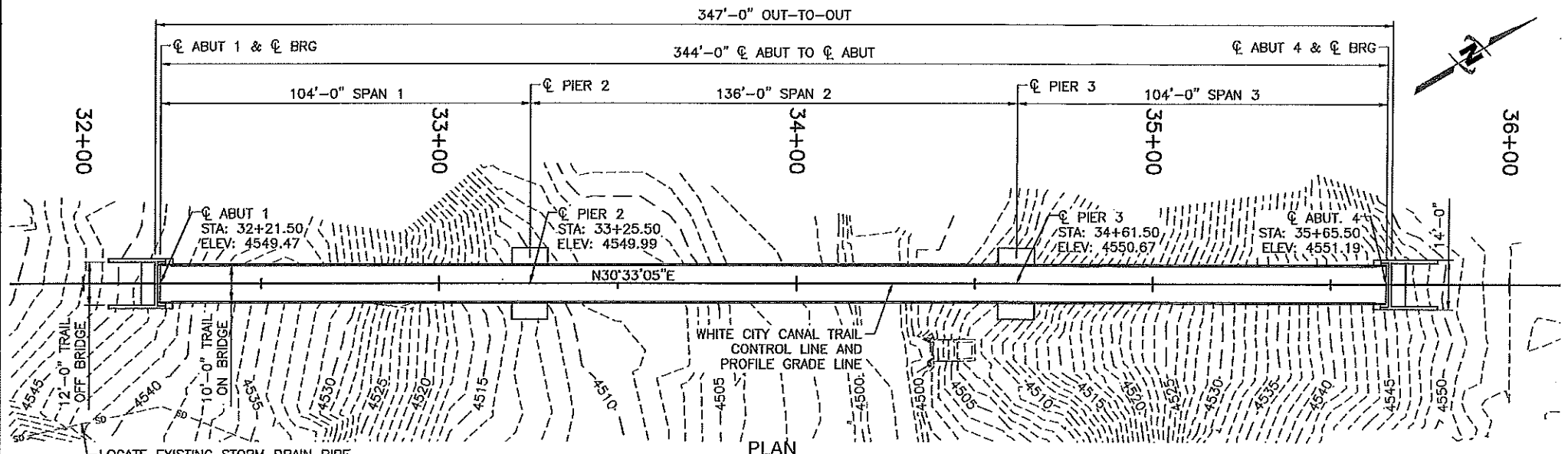


3/13/2019

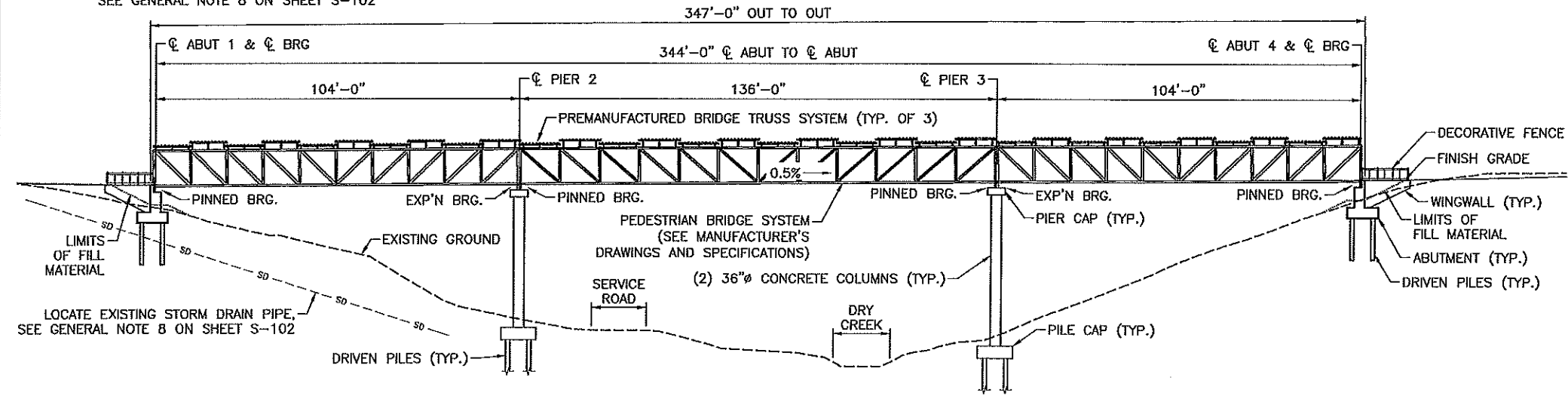
NO.	REVISION	DESCRIPTION	DATE

WHITE CITY CANAL TRAIL
 SALT LAKE COUNTY UTAH
 PEDESTRIAN BRIDGE
 SITUATION AND LAYOUT 1 OF 2

FILE: 55-15-107 S-101
 JUB PROJ #: 55-15-107
 DRAWN BY: JPL
 DESIGN BY: SER
 CHECKED BY: AYB
 AT FULL SIZE, IF NOT ONE INCH SCALE ACCORDINGLY
 LAST UPDATED: 3/13/2019
 SHEET NUMBER:
S-101



LOCATION PLAN



ELEVATION MEASURED ALONG WHITE CITY CANAL TRAIL CONTROL LINE

GENERAL NOTES
SEE "SITUATION AND LAYOUT 2 OF 2" FOR GENERAL NOTES.

DESIGN DATA
PEDESTRIAN LIVE LOAD IN ACCORDANCE WITH AASHTO LRFD GUIDE SPECIFICATIONS FOR THE DESIGN OF PEDESTRIAN BRIDGES.
SEISMIC DESIGN IN ACCORDANCE WITH AASHTO GUIDE SPECIFICATIONS FOR LRFD SEISMIC BRIDGE DESIGN.

CAST-IN-PLACE CONCRETE: $f'_c = 4.0$ KSI $n = 8$ CLASS AA(AE) $f_y(\text{REINF}) = 60$ KSI (UNLESS OTHERWISE NOTED)

STRUCTURAL STEEL: AASHTO M 270
 $F_y = 50$ KSI (GRADE 50W) UNLESS NOTED OTHERWISE
 $F_y = 36$ KSI (GRADE 36) DECORATIVE FENCE

UNIFORM TEMPERATURE LOAD: MAIN SPAN (136') WILL ACCOUNT FOR LONGITUDINAL FORCES DUE TO UNIFORM TEMPERATURE CHANGE BETWEEN TWO PINNED BEARINGS AS SHOWN IN TABLE BELOW. TEMPERATURE REFERS TO TEMPERATURE OF THE STEEL, NOT AMBIENT TEMPERATURE. LINEAR INTERPOLATION IS ALLOWED.

TEMPERATURE AT CONSTRUCTION (°F)	FORCES APPLIED TO TRUSS (KIPS)	
	TENSION	COMPRESSION
40	12.86	14.70
60	16.53	11.02
80	20.21	7.35

SEISMIC CRITERIA: 7% PROBABILITY OF EXCEEDANCE IN 75-YR DESIGN EVENT
PGA = 0.402g $S_s = 0.934g$ $S_1 = 0.350g$
As = 0.441g $S_{ps} = 1.052g$ $S_{p1} = 0.595g$
SITE CLASS D, SDC D

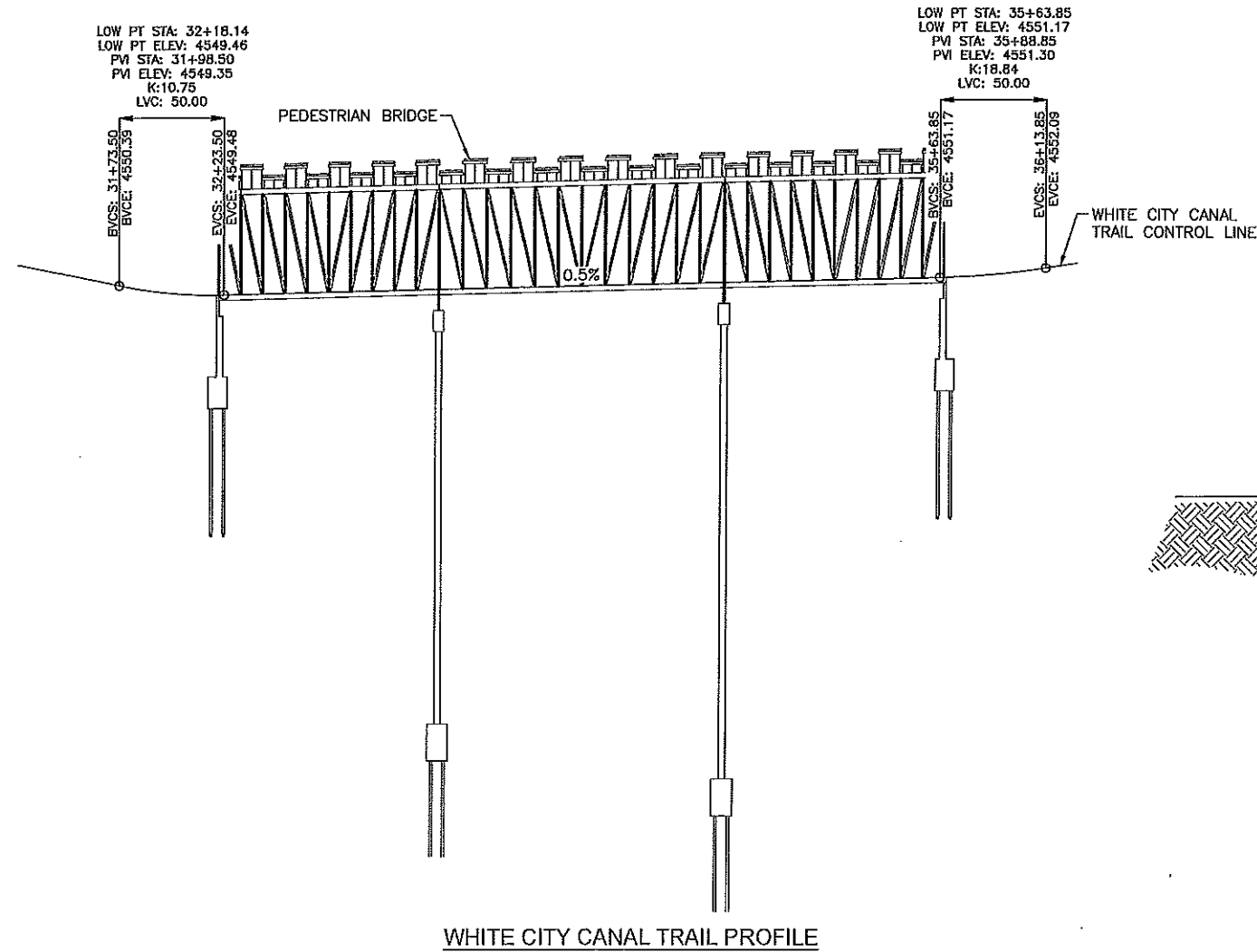
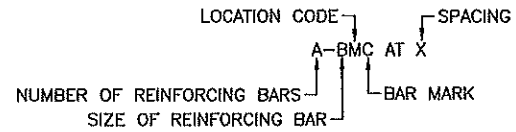
Sheet List Table	
Sheet Number	Sheet Title
S-101	SITUATION AND LAYOUT 1 OF 2
S-102	SITUATION AND LAYOUT 2 OF 2
S-103	BORING LOGS 1 OF 3
S-104	BORING LOGS 2 OF 3
S-105	BORING LOGS 3 OF 3
S-106	FOUNDATION PLAN
S-107	DRILLED PILE DETAILS
S-108	ABUTMENT AND WINGWALL LAYOUT
S-109	ABUTMENT DETAILS
S-110	WINGWALL DETAILS
S-111	PIER LAYOUT
S-112	PIER PILE CAP DETAILS
S-113	PIER CAP AND COLUMN DETAILS
S-114	BEARING LAYOUT AND DETAILS
S-115	DECORATIVE FENCE DETAILS 1 OF 2
S-116	DECORATIVE FENCE DETAILS 2 OF 2

QUANTITIES			
ITEM	EST QTY	UNIT	AS CONST
MOBILIZATION	1	LUMP	
DRIVEN PILES 12.75 INCH X 0.500 INCH	301	LF	
DRIVEN PILES HP 14 X 117	705	LF	
42 INCH DECORATIVE FENCE	58	LF	
REINFORCING STEEL - COATED (PLAN QUANTITY)	29,600	LB	
STRUCTURAL CONCRETE (EST. LUMP QTY: 170 CU YD)	1	LUMP	
PREFABRICATED STEEL TRUSS BRIDGE	1	LUMP	
GALVANIZED METAL ROOF (ADDITIVE ALTERNATE 2)	1	LUMP	

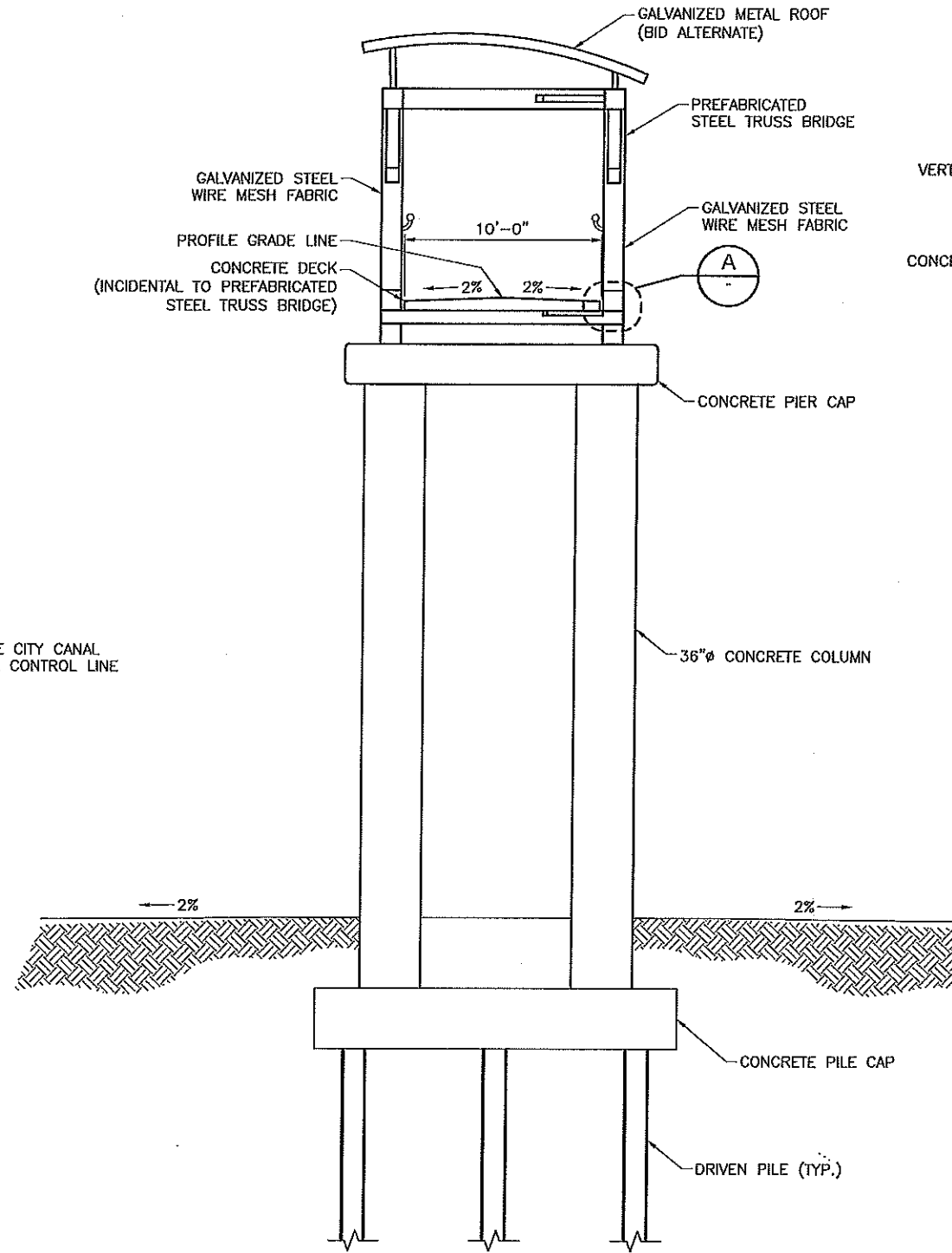
Plot Date: 3/13/2019 4:28 PM Plotted By: Adam Lambert Data Created: 1/22/2017 10:00 AM PROJECT: JUB - KAYSVILLE OFFICE: 55-15-107 WHITE CITY CANAL TRAIL CONTROL LINE STRUCTURAL: 55-15-107 S-101.DWG

GENERAL NOTES

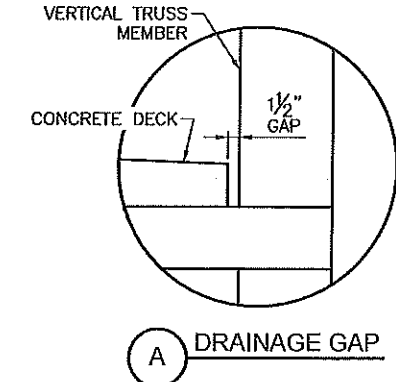
- CONSTRUCT IN ACCORDANCE WITH UTAH DEPARTMENT OF TRANSPORTATION 2017 STANDARD SPECIFICATIONS, UNLESS NOTED OTHERWISE. PROVIDE PREMANUFACTURED BRIDGE IN ACCORDANCE WITH SECTION 05125 OF THE SPECIFICATIONS.
- USE COATED DEFORMED CARBON STEEL BARS CONFORMING TO AASHTO M111 OR ASTM A775 AND AASHTO M31 GRADE 60, RESPECTIVELY. USE COATED DEFORMED CARBON STEEL BARS CONFORMING TO ASTM A706 GRADE 60 IN CONCRETE COLUMNS. USE UNCOATED DEFORMED CARBON STEEL BARS CONFORMING TO ASTM A706 GRADE 60 WHERE WELDING OF STEEL BARS TO STRUCTURAL STEEL IS REQUIRED.
- USE STRUCTURAL STEEL CONFORMING TO AASHTO M 270 GRADE 50W EXCEPT WHERE NOTED OTHERWISE.
- CHAMFER ALL EXPOSED CONCRETE CORNERS 3/4 INCH EXCEPT WHERE NOTED OTHERWISE.
- PROVIDE 2 INCH MINIMUM CONCRETE COVER TO REINFORCING STEEL EXCEPT WHERE NOTED OTHERWISE.
- USE CLASS AA(AE) CAST-IN-PLACE CONCRETE EXCEPT WHERE NOTED OTHERWISE.
- ITEM "STRUCTURAL CONCRETE" INCLUDES EXCAVATION, GRANULAR BACKFILL BORROW, FREE-DRAINING GRANULAR BACKFILL, AND DRAINAGE GEOTEXTILE.
- VERIFY UTILITY LOCATIONS BEFORE CONSTRUCTION. PROTECT EXISTING UTILITIES IN PLACE UNLESS NOTED OTHERWISE.
- LOCATE EXISTING STORM DRAIN PIPE NEAR ABUTMENT 1 (SOUTH ABUTMENT). SUBMIT LOCATION DATA (PLAN AND ELEVATION) TO ENGINEER FOR EVALUATION. IF IT IS DETERMINED THAT THE EXISTING PIPE LOCATION CONFLICTS WITH THE PEDESTRIAN BRIDGE FOUNDATION, FURTHER INSTRUCTIONS WILL BE GIVEN. OTHERWISE, PROTECT PIPE IN EXISTING LOCATION.
- COAT OR GALVANIZE ALL MISCELLANEOUS STEEL PLACED IN STRUCTURAL CONCRETE, UNLESS NOTED OTHERWISE.
- DO NOT SCALE DRAWINGS. HORIZONTAL DIMENSIONS ARE PLAN. VERTICAL DIMENSIONS ARE PLUMB.
- REINFORCING IS CALLED OUT IN THE FORM: A-BMC AT X, WHERE A IS THE NUMBER OF REINFORCING BARS, B IS THE REINFORCING SIZE, M IS THE REINFORCING LOCATION CODE, C IS THE REINFORCING BAR MARK, AND X IS THE SPACING. SEE BELOW.



WHITE CITY CANAL TRAIL PROFILE



TYPICAL SECTION AT PIER



J-U-B ENGINEERS, INC.

J-U-B ENGINEERS, INC.
466 North 900 West
Kaysville, Utah 84037
Phone: 801.547.0393
Fax: 801.547.0397
WWW.JUB.COM

BID SET



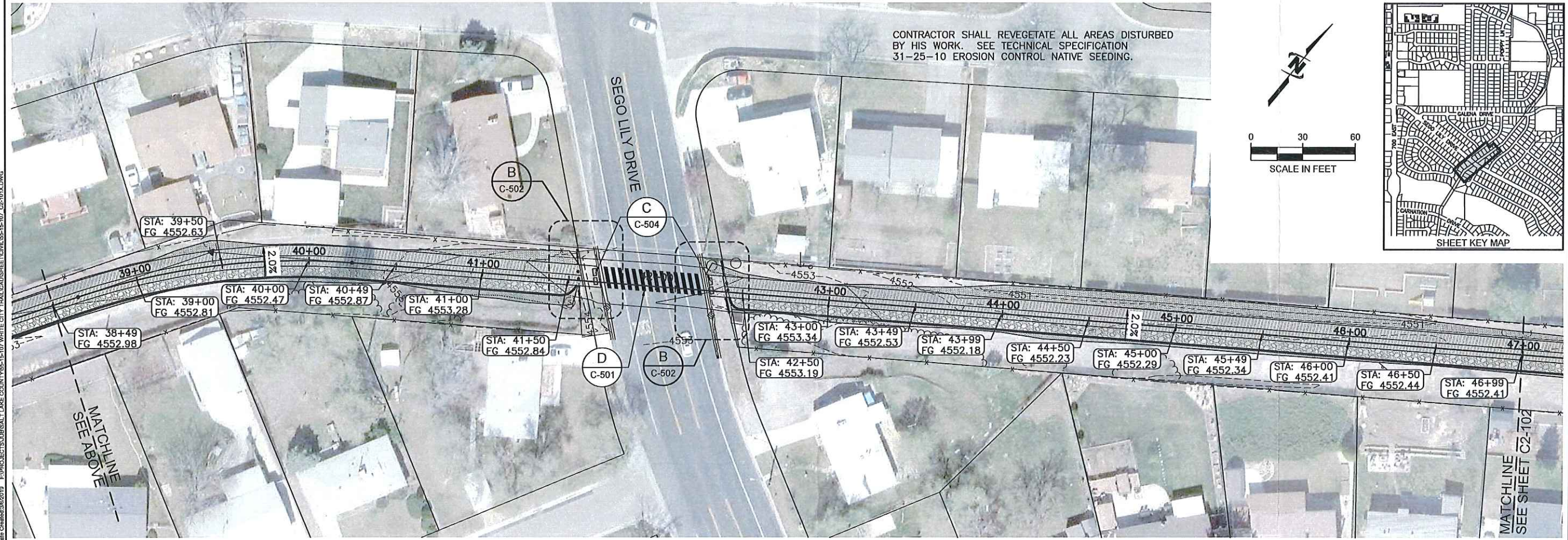
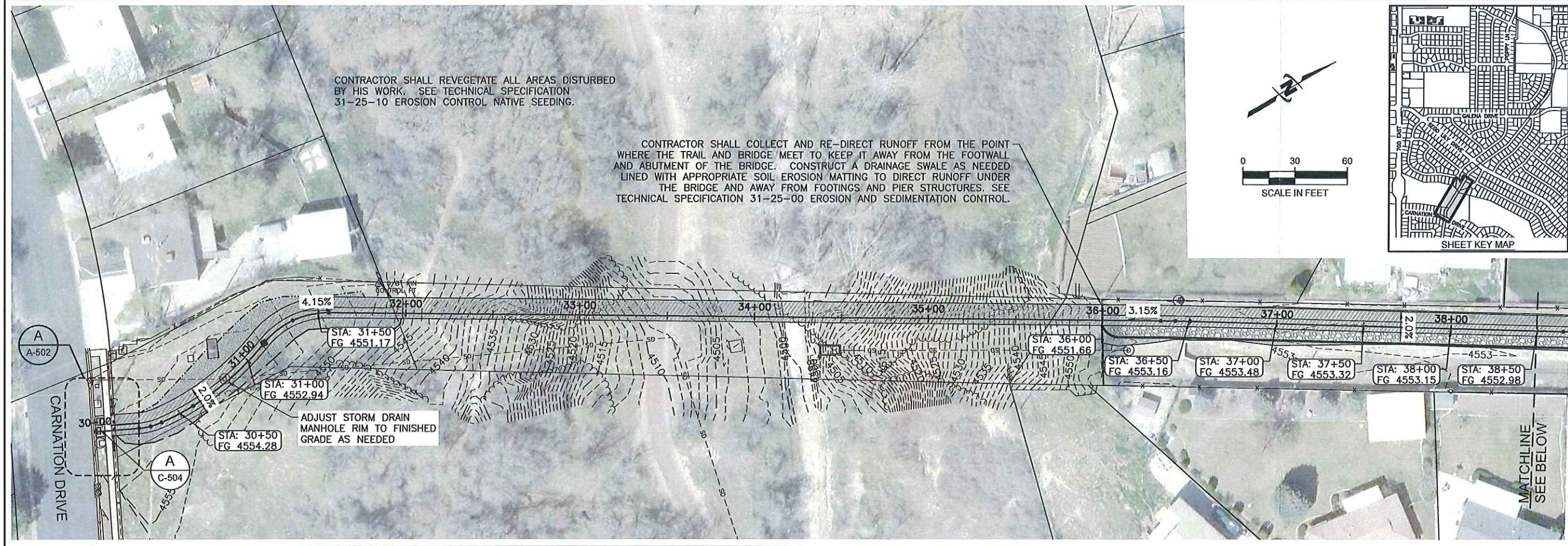
3/13/2019

NO.	REVISION	DESCRIPTION	BY	DATE

WHITE CITY CANAL TRAIL
SALT LAKE COUNTY UTAH
PEDESTRIAN BRIDGE
SITUATION AND LAYOUT 2 OF 2

FILE: 55-15-107_2-102
JUB PROJ #: 55-15-107
DRAWN BY: JPT
DESIGN BY: BSR
CHECKED BY: AWB
ONE INCH
AT FULL SIZE, IF NOT ONE INCH, SCALE ACCORDINGLY
LAST UPDATED: 3/13/2019
SHEET NUMBER: S-102

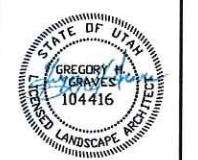
Plot Date: 3/13/2019 4:48 PM Plotted By: Melissa Runnion
 Date Created: 3/22/2017 10:06 AM Plotted By: JUB



J-U-B ENGINEERS, INC.

J-U-B ENGINEERS, INC.
 466 North 900 West
 Kaysville, Utah 84037
 Phone: 801.547.0393
 Fax: 801.547.0397
 www.jub.com

BID SET



RELEASE OF DRAWINGS AND THE IDEAS AND DESIGNS INCORPORATED HEREIN AS AN INSTRUMENT OF PROFESSIONAL SERVICE, IS THE WHOLE OR PART FOR ANY OTHER PROJECT WITHOUT THE EXPRESS WRITTEN AUTHORIZATION OF J-U-B ENGINEERS, INC.

NO.	REVISION	DESCRIPTION	BY	DATE

WHITE CITY CANAL TRAIL
 SALT LAKE COUNTY UTAH

GRADING PLAN

FILE: 55-15-107_C2-101X
 JUB PROJ. #: 55-15-107
 DRAWN BY: TAG
 DESIGN BY: GHG
 CHECKED BY: GHG
 ONE INCH
 AT FULL SIZE, IF NOT ONE
 INCH, SCALE ACCORDINGLY
 LAST UPDATED: 3/6/2019
 SHEET NUMBER:
C2-101

File Date: 3/6/2019 1:28 PM Plotted By: Greg Graves
 Date Created: 3/6/2019 E:\PROJECTS\SUBSALT LAKE COUNTY\55-15-107_C2-101X.DWG