

MEMORANDUM

Date: 4/4/2022

To: Sandy City

From: Hales Engineering

Subject: Sandy Rio Tinto Stadium – Temporary Off-Site Event Parking 2022 Update

Introduction

This memorandum addresses the Rio Tinto Stadium – Temporary Off-Site Event Parking and correlates to the proposed Sandy City Land Development Code, Off-Street Parking Standards ordinance amendments (Code #15-06-05, Section B - General Provisions, proposed item 5 with subsections a) through n):

5. Temporary Off-Site Event Parking. Temporary off-site parking for events may be allowed after review and approval of a parking and access management plan by the Planning Commission at a public meeting. Temporary parking is parking established for a fixed period of time with the intent to discontinue such parking upon the expiration of the time period. An occasional event with an expected attendance of less than five hundred (500) persons or if the event does not occur more than once a year shall not be subject to the requirements of this Section.

The applicant will be responsible to make provisions for on- and off-site parking, safe pedestrian routes to and from the off-site parking, transportation to and from off-site locations beyond a 5,000-foot (approximately 15-minutes) walking route, entry and exiting methods, temporary or permanent traffic control methods, and restricting parking in identified areas.

The parking and access management plan must be approved prior to the issuance of a temporary use permit, business license, or certificate of occupancy required for the event, project, or use. Upon approval, the parking and access management plan shall be available for public inspection. All approved updates of a parking and access management plan shall be available for public inspection.

The applicant may be responsible to post a guarantee for improvements and implementation of various components of the parking and access management plan.

Parking Plan

a. Determine the total number of parking spaces required based upon the land use category less any anticipated mass transit projection, which may be limited to 15% of the total number of required parking spaces unless greater mass transit use is demonstrated.

Total Soccer Match Required Parking: 4,548 total parking spaces.

Soccer Match¹: 20,213 attendees
 (-) Mass Transit riders: 2,021 attendees (10% of attendees)²
 18,192 attendees will drive to stadium

18,192 attendees / 4 seats per vehicle = 4,548 spaces

Concert events are no longer held in Rio Tinto Stadium.

b. Establish the minimum number of on-site spaces that are required. Specify the number of those spaces that will be reserved for or utilized by employees, VIP's, buses, media, etc.

2,227 stalls provided on-site (see Figure 1). Based on conversations between the City and the development Team, it was determined that a minimum of **656 stalls** would be required based on the parking that was available in the first year, recognizing that this could change in the future with the fluctuating land uses.

Lot	Parking Supply (stalls)
West Stadium Lot	543
South Stadium Lot	197
Stadium Loading Docks	80 (for players/coaches, plus visiting team bus)
North Lot	275
Auric Solar Lot	563
Flag Lot	100
Canyons East Lot	200
Canyons West Lot	200
Zagg Brands Lot	69
TOTAL	2,227

Employees and staff personnel will be encouraged to ride mass transit or to use the shuttle route provided by Rio Tinto Stadium. Shuttle routes will begin operation two hours before game time and continue until two hours after the event is over for employees.

c. Establish the minimum number of off-site spaces, if any, that are required within a 1,650 foot (approximately 5-minutes) walking route of the site.

1,570 additional stalls acquired / secured (see Figure 2) within a 5-minute walking route to the site.

Lot	Parking Supply (stalls)
Monroe Plaza Parkway Lot	400
UYSA Lot	100
Sandy Business Park Lot	300
UDOT Lot	95
MACU Expo Center	675
TOTAL	1,570

d. Establish the minimum number of off-site parking spaces, if any, that are required within a 5,000 foot (approximately 15-minutes) walking route of the site.

1,901 additional stalls acquired / secured (see Figure 3) within a 15-minute walking route to the site.

Lot	Parking Supply (stalls)
Sizzler Lot	200
Sandy City Hall	285
Mountain America parking structure	930
UTA Sandy Civic Center TRAX station	20
UTA Historic Sandy TRAX station	316
Workers Comp	150
TOTAL	1,901

A shuttle route runs between the Sandy City Hall parking and the stadium and before and after the game.

In total, 5,698 stalls are owned or secured by Rio Tinto Stadium, thus meeting the required amount of 4,548 stalls.

e. Establish the minimum number of off-site parking spaces, if any that are required beyond the 5,000-foot (approximately 15-minutes) walking route of the site.

No stalls are anticipated beyond the 15-minute walking route of the Stadium.

f. Identify all off-site parking sites potentially available to be used for c, d, and e above. Identify methods that the applicant will provide for safe pedestrian routes to and from the parking sites satisfying criteria c and d, above, e.g. wider sidewalks, trails, bridges, permanent or temporary traffic control devices, individuals directing traffic, etc. and methods to provide transportation to and from those sites satisfying criterion e, above, e.g. TRAX, UTA buses, shuttle buses, etc. and provide a timeline for the implementation of the identified methods. Each potential off-site parking location shall conform to the parking area development and maintenance requirements in this Section.

Figure 2 shows the off-site parking supply within a 5-minute walk route of the stadium. Figure 3 identifies the off-site parking within a 15-minute walk route, and parking areas beyond the 15-minute walk routes where shuttles will be used.

The following methods have been implemented:

1. UDOT with their State Street road widening paved the park strip area between 9000 South and Town Ridge Parkway on the west side of the road, which provides an effective walking sidewalk width of 8-feet
2. Master plan sidewalk widening projects
3. Sandy City is working with the canal companies to extend a trail along the eastern-most canal for pedestrian use
4. A pedestrian bridge has been constructed over the canal on the northeast corner of the stadium and a new wider staircase was constructed (2014)
5. Temporary traffic control devices
 - a. Barriers used to control pedestrians for in-load and out-load of the stadium
6. Crowd control officers – Officers were used at the 9400 South / State Street traffic signal, 9400 South / Stadium Road, 9400 South / Monroe Street, 9200 South (stadium road) / State Street intersections and along State Street east of the stadium.
7. Several parking lots close to the stadium sell parking spaces to the public during stadium events. These locations are not under contract but have consistently provided parking for events. These locations are shown in Figure 4 and had an estimated 5,000(+) parking stalls, with peak recorded event parking of 2,406 parked vehicles for the Paul McCartney concert on July 13th, 2010, and 2,356 parked vehicles for an RSL soccer game on Aug. 18th, 2010. In addition, we have not included any on-street parking stalls within our calculations.
8. In the summer of 2021, a traffic control signal was installed following the realignment of 9270 South making it a full four-leg intersection. This signal replaces the temporary pedestrian signal which was installed as a temporary measure.

g. Identify neighborhoods and other areas that will specifically not be allowed to be part of the calculation of available parking spaces or will be subject to parking restrictions during the event. Identify measures that the applicant will implement to prevent parking within restricted areas, e.g. signage, security personnel, proposed new parking regulations, etc. and provide a timeline for the implementation of the identified methods.

As previously identified, the neighborhoods in the vicinity of the stadium have been excluded from the parking calculations. For events at the stadium during 2013, traffic signs reading, "No Event Parking," were effectively used to limit parking in several areas along with several temporary traffic barriers that were placed across the inbound traffic lanes at several locations to prevent parking infiltration into local neighborhoods, see pictures in Appendix A. Implementation of these measures was sufficient for the 2013(+) events at Rio Tinto Stadium since implemented. In addition, Rio Tinto stadium will remind their patrons that parking in the adjacent neighborhoods is not appropriate or acceptable.

h. Identify pedestrian exit times and volumes to on-site and off-site parking areas. Identify methods that the applicant will implement to manage the projected volume expeditiously and safely, e.g. wider sidewalks, temporary or permanent traffic control methods, etc. and provide a timeline for the implementation of the identified methods.

Refer to item (f) for pedestrian management strategies. UDOT has installed a full traffic signal at the stadium road with State Street (9270 South) to aid in the safe crossing of Rio Tinto Stadium patrons, which provides additional pedestrian opportunities on both the east and west side of State Street and facilitates better and separate pedestrian flow to the TRAX station.

It is our understanding that the traffic signal has made a positive impact on the foot traffic before and after events held at Rio Tinto stadium. Pedestrians are now directed to designated areas for crossing State Street, which can be completed more efficiently with the signal and with less oversight from the officers.

i. Include a traffic study presenting traffic counts, times and circulation patterns for a geographic area encompassing all potential off-site parking sites is required by the City Transportation Engineer. If required, the traffic study shall also present the projected impact of the event on existing traffic counts, times, and circulation patterns.

Hales Engineering submitted a traffic study in 2008.

j. Identify the methods the applicant will implement, on vacant or unimproved lots, to control the dust and debris.

The Canyon's West and East lots on 9400 South will implement dust and debris control measures.

k. Identify any permits or approvals necessary from other transportation agencies with jurisdiction over roads or streets affected by the temporary or permanent traffic control measures identified in criteria g, h and i above.

Rio Tinto stadium staff works with the Sandy City public services to identify the needs for temporary traffic control / officer enforcement on an as needed basis. Following the identification of these needs, Rio Tinto holds a combined meeting with Sandy City and

UDOT officials to discuss the traffic control plans and identify the appropriate permits or approvals necessary for implementation.

Coordination meetings are held with Sandy PD, Engineering and Planning before major events in the stadium.

l. Specify the date by which the applicant must provide the Planning Commission with evidence of availability of off-site parking spaces, safe pedestrian routes, transportation services, measures to prevent parking in restricted areas, and measures to manage entry and exit times and volumes of pedestrians and vehicles.

Rio Tinto stadium typically updates the parking and access management plan before the start of each RSL season (February to March) as the schedule is released. The 2022 RSL schedule is shown in Appendix B.

m. Indicate the time period for which the parking and access management plan will be in effect.

The Rio Tinto stadium parking and access management plan will be in effect from March to February each calendar year.

n. Be updated on a yearly basis or as otherwise required by the Planning Commission after the project or event has commenced operation. The Planning Commission shall hold at least one public meeting prior to the approval of any updated parking and access management plan.

Rio Tinto stadium will update the parking and access management plan in March of each calendar year for the pending season, depending on when the season schedule is released.

¹ Average attendances at soccer matches during the 2011 season (not including post season, or exhibition matches) were 17,561. The highest attendance recorded in 2010 for a regular soccer game was 20,762 on Sept. 28th, 2011 vs. the Chicago Fire.

² Mass transit ridership is based on information from UTA for similar events at Energy Solutions Arena, Rice-Eccles Stadium, and Franklin Covey Field.

³ Walking speed for pedestrian's ranges from 4 feet / second for a senior citizen to 7 feet / second for a teenager. The average walking speed of 5.5 feet per second equates to a walking distance of 1,650 feet within a 5-minute walk time, and a walking distance of approximately 5,000 feet within a 15-minute walk time.

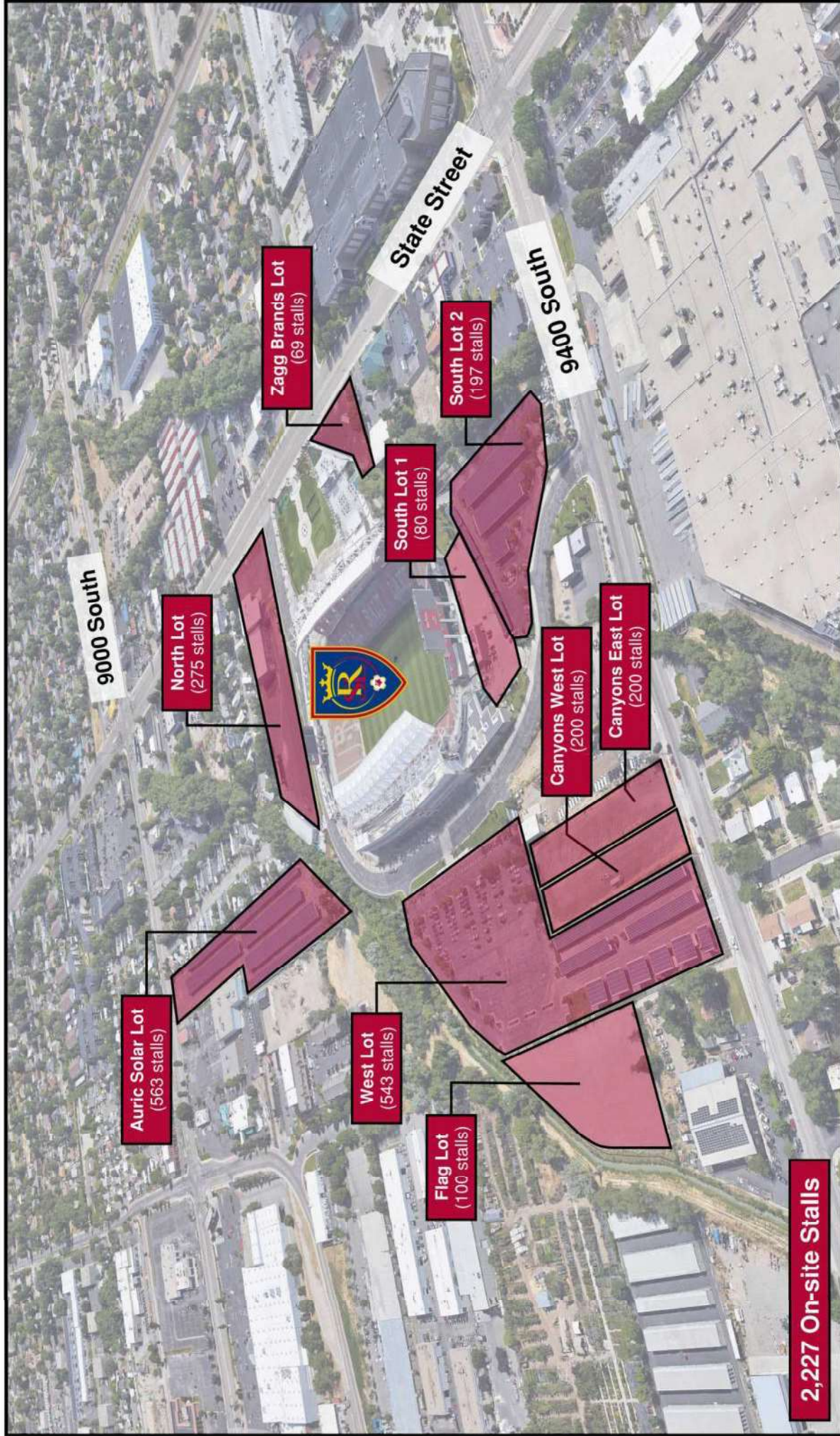
2022 Schedule Evaluation

Hales Engineering reviewed the schedules for Real Salt Lake, the Mountain America Credit Union (MACU) Expo Center, and Hale Center Theatre, as these are the venues that likely have the highest parking demand in the area. The schedule for the soccer team is provided in Appendix B.

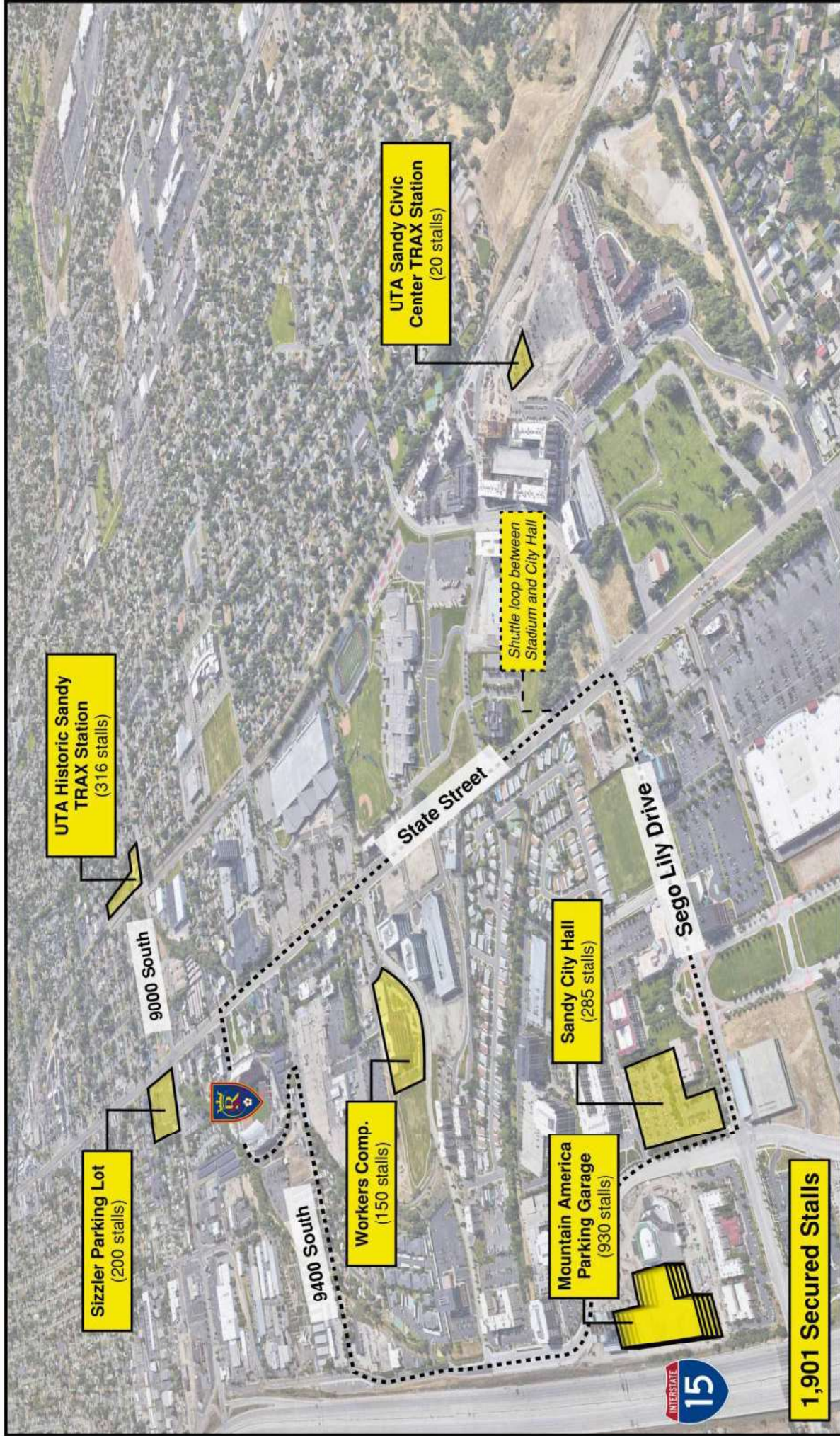
Real Salt Lake's home season will begin on March 5, 2022. The MLS regular season will end the first week of October 2022.

Hales Engineering compared the 2022 RSL schedule with the schedules of the MACU Expo Center and Hale Center Theatre. It was found that there may be 17 conflicts between RSL games and Hale Center Theatre shows and 6 conflicts with MACU events in 2022.

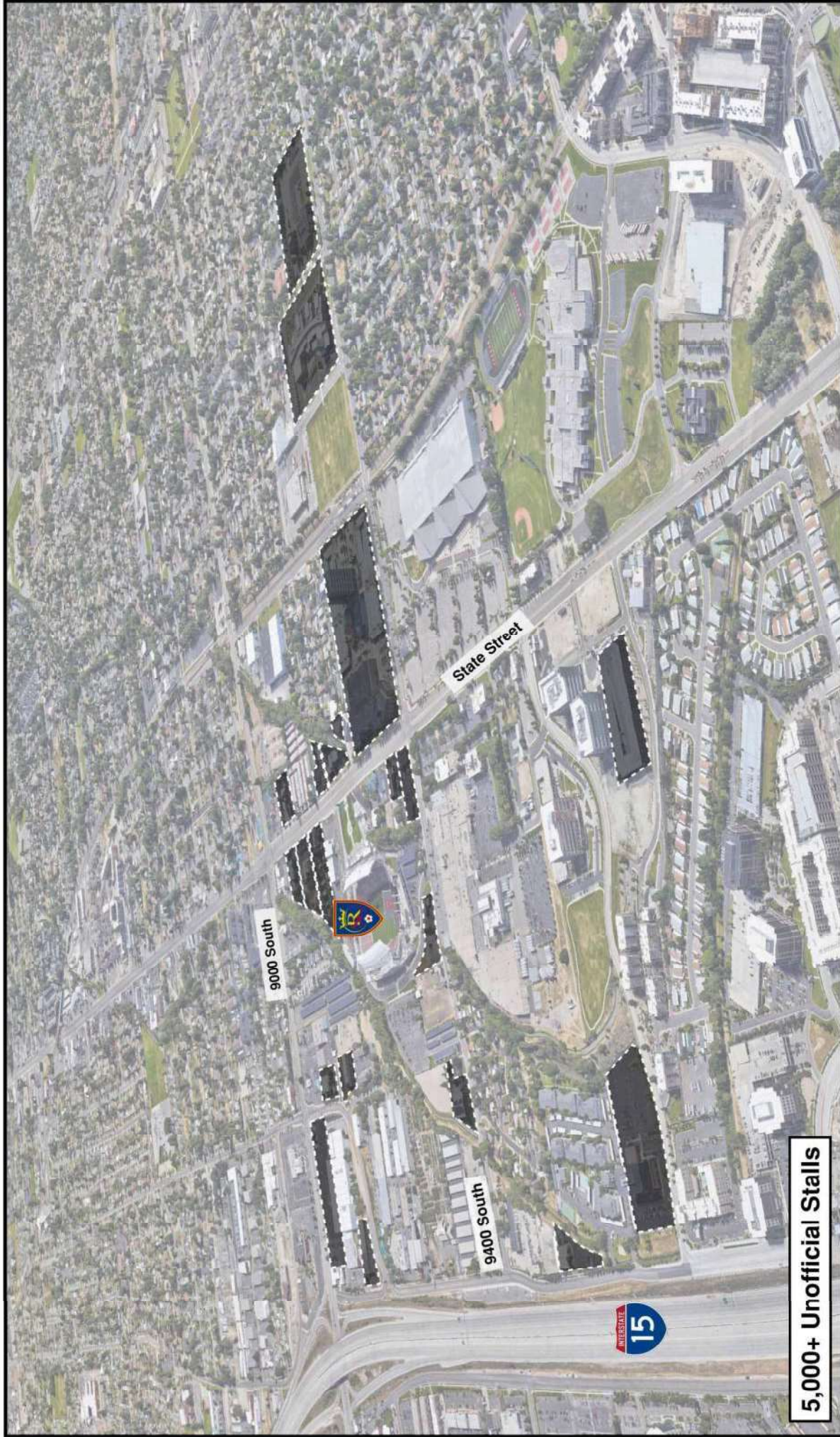
The 17 conflicts between RSL and Hale Center Theatre may result in less parking options. However, it is not anticipated that Hale Center Theatre will ever use the full 930-stall parking garage, leaving space for overflow RSL parking, if needed. RSL does not show the Mountain America parking garage by Hale Center Theatre on their official parking map, so RSL guests will not be directed there.







1,901 Secured Stalls



5,000+ Unofficial Stalls

APPENDIX A

Event Signing



APPENDIX B

Schedules



2022 MLS SEASON SCHEDULE

■ HOME ■ AWAY | ALL MATCHES AVAILABLE TO VIEW ON KMYU OR THE KSL TV APP



HOU
SUN - APR 27
5:00 PM

LA
SAT - APR 30
1:30 PM

COL
SAT - JUL 9
8:00 PM

SEA
SAT - MAR 16
4:30 PM

NSH
SUN - MAY 8
3:00 PM

ATL
WED - JUL 13
5:20 PM

NE
SAT - MAY 12
5:30 PM

ATX
SAT - MAY 14
7:30 PM

SKC
SUN - JUL 17
7:30 PM

NSH
SAT - MAR 19
7:30 PM

MTL
SUN - MAY 22
2:00 PM

DAL
SAT - JUL 23
8:00 PM

SKC
SAT - MAY 26
8:00 PM

HOU
SAT - MAY 28
7:30 PM

SJ
SAT - JUL 30
TBD

COL
SAT - MAR 2
7:00 PM

VAN
SAT - JUN 4
8:00 PM

LAFC
SAT - AUG 6
8:00 PM

TOR
SAT - JUN 9
8:00 PM

SJ
SAT - JUN 18
7:30 PM

SEA
SUN - AUG 14
8:00 PM

NYC
SUN - APR 17
11:00 AM

CLB
SAT - JUN 25
8:00 PM

VAN
SAT - AUG 20
8:00 PM

POR
SAT - APR 23
8:00 PM

MIN
SAT - JUL 2
8:00 PM

DAL
SAT - AUG 27
7:00 PM

MIN
WED - AUG 31
7:30 PM

DC
SAT - SEP 10
7:30 PM

CIN
SAT - SEP 17
7:30 PM

LA
SAT - OCT 1
8:30 PM

POR
SUN - OCT 9
3:00 PM

SCHEDULE SUBJECT TO CHANGE
VISIT RSL.COM FOR UP-TO-DATE KICKOFF TIMES
& FURTHER INFORMATION

PRESENTED BY
LifeVantage