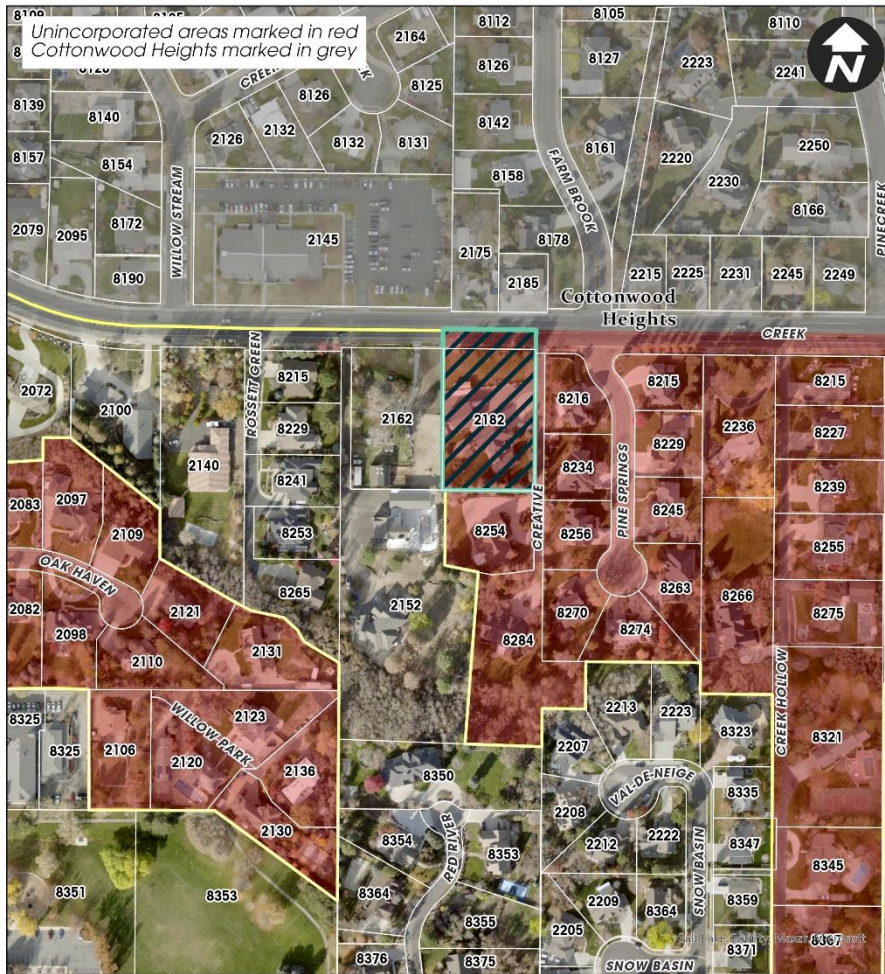


# Annexation



0 55 110 220 330 440 550 Feet

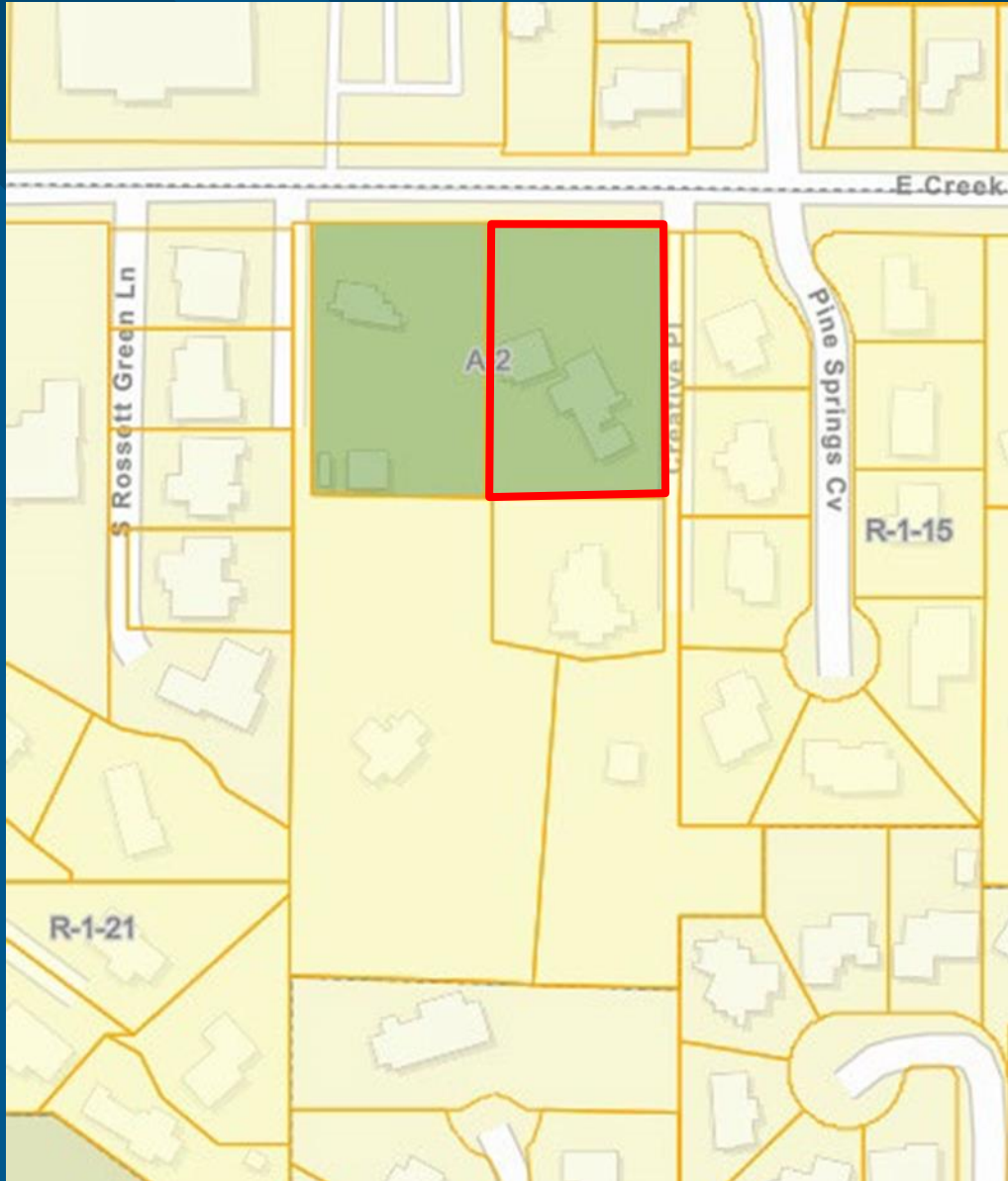
Varney Annexation  
2182 E Creek Road  
 Subject Property

- Varney Annexation  
R-1-40A Zone
- 2182 E. Creek Road  
[Community #18]
- Request: To annex approximately  
1.13 acres.
- PC reviewed this request on  
December 19, 2024. They are  
forwarding a positive  
recommendation on the  
annexation and the zone.

City Council

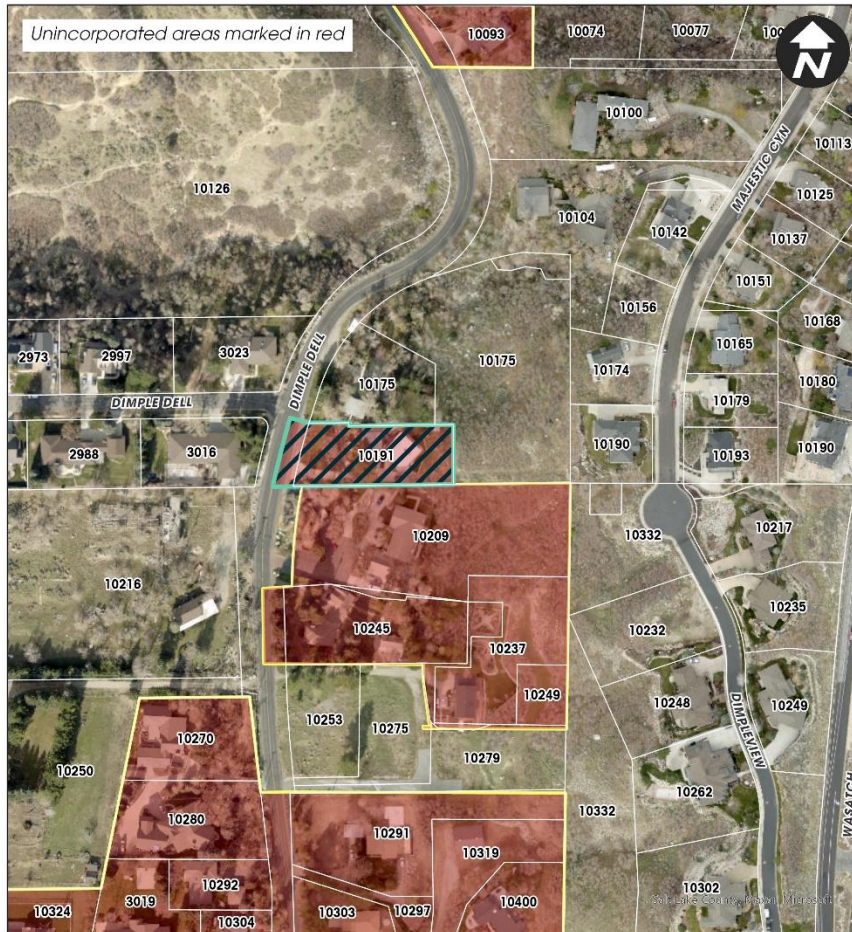


# Current County Zoning



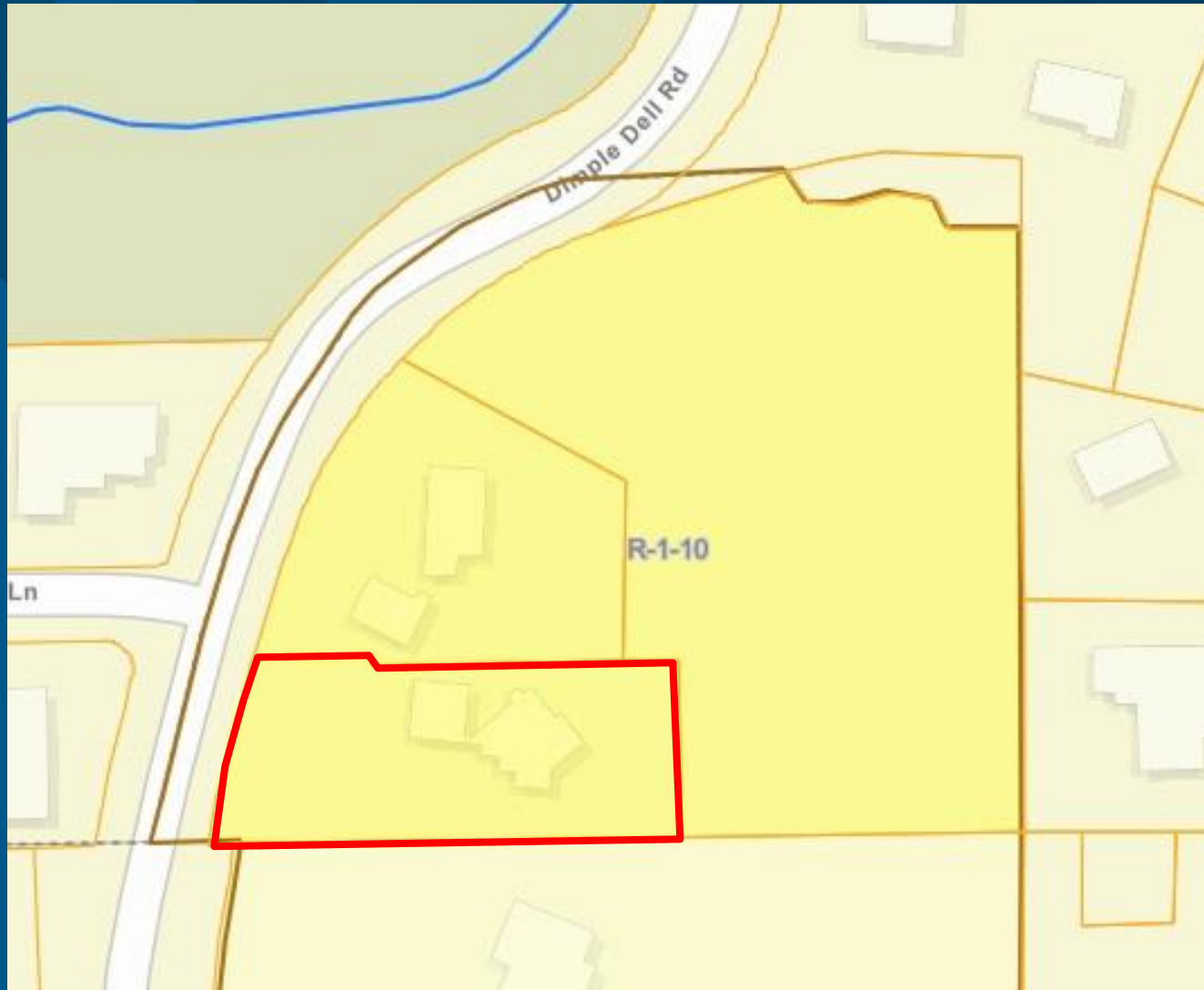
# Annexation

- Orgill Annexation  
R-1-10 Zone
- 10191 S. Dimple Dell Road
- Request: To annex approximately 0.61 acres.
- 
- PC reviewed this request on December 19, 2024. They are forwarding a positive recommendation on the annexation and the zone.



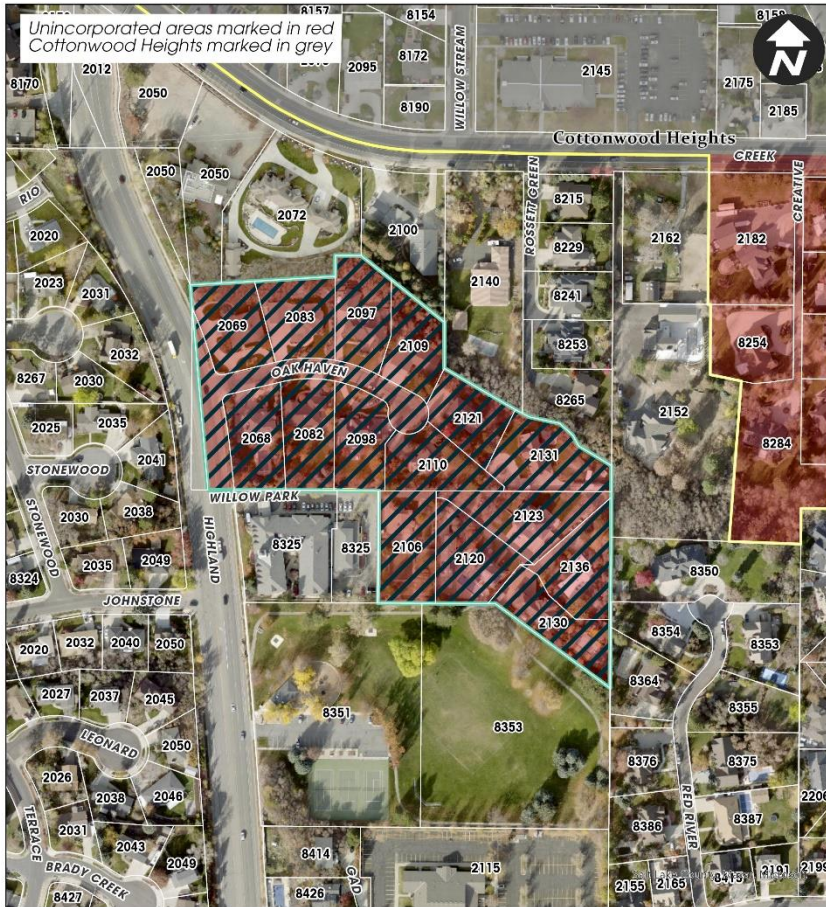
Orgill Annexation  
10191 S Dimple Dell  
 Subject Property

# Current County Zoning



# Annexation

- Oak Haven Annexation  
R-1-20 Zone
- 2068 E – 2131 E Oak Haven Pl
- 2106 E – 2136 E Willow Park Lane  
[Community #18]
- Request: To annex approximately 8.36 acres.
- PC reviewed this request on December 19, 2024. They are forwarding a positive recommendation on the annexation and the zone.



Oak Haven Annexation

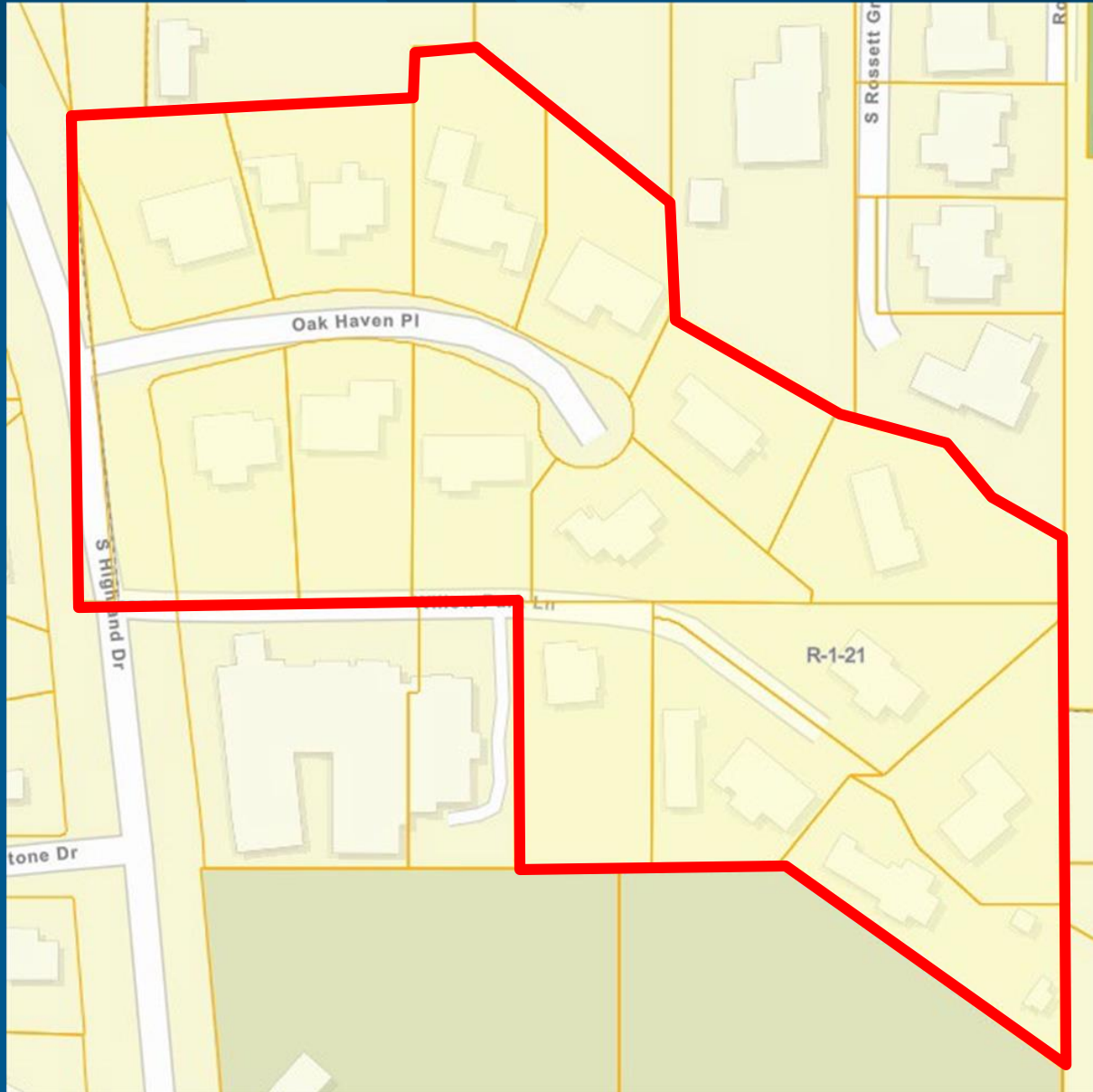
 Subject Property



City Council



# Current County Zoning

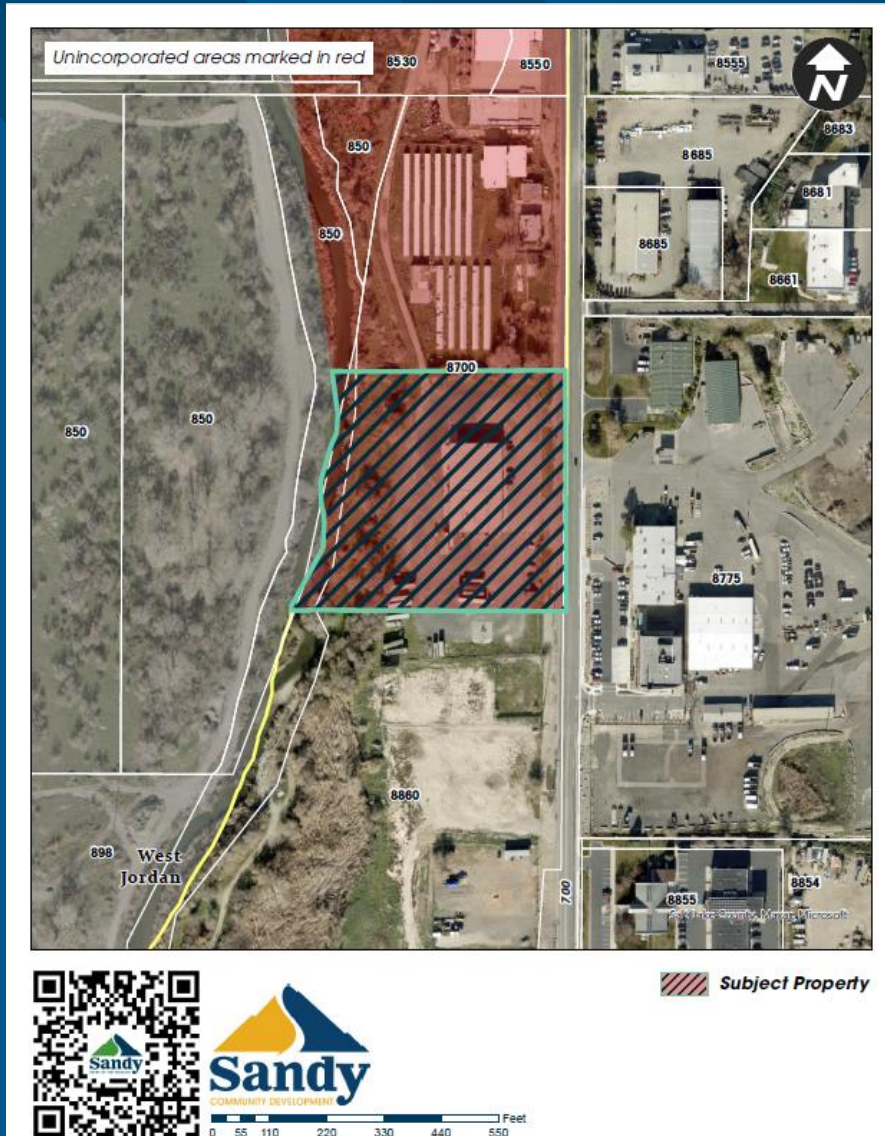


City Council



# Annexation

- FBAC Development II Annexation ID Zone
- 8700 S. 700 W.  
[Community #1]
- Request: To annex approximately 5.03 acres.
- PC reviewed this request on January 16, 2025. They are forwarding a positive recommendation on the annexation and the zone.



# Current County Zoning

