

**CONSTRUCTION KEY NOTES REFERENCE**

NO.	DESCRIPTION	DETAIL
①	CONCRETE PAVEMENT WITH GRANULAR BASE	1/CDT.01
②	DRIVE APPROACH PER SANDY CITY STD DA-02	5/CDT.01
③	ASPHALT RESTORATION PER CITY OF SANDY RC-02	1/CDT.03
④	CURB AND GUTTER RESTORATION PER CITY OF SANDY CG-01	2/CDT.03
⑤	CONCRETE RESTORATION PER CITY OF SANDY RC-01	3/CDT.03

**AREA TABLE**

PARTICULARS	S.F.	%
BUILDING	4,216	22.3
HARDSCAPE	3,985	21.0
LANDSCAPE	10,754	56.7
TOTAL	18,955	100

**PARKING COUNT**

PARTICULARS	PROVIDED	
	GARAGE	ADA
PARKING STALLS	6	0
TOTAL	6	

NOTE: INSTALL SURVEY RIVETS, OFFSET FROM EACH LOT'S PROPERTY CORNERS, IN CURB OR SIDEWALK.

NOTE: BUILDER/OWNER SHALL SECURE AN EXCAVATION PERMIT FROM SANDY CITY PUBLIC WORKS DEPARTMENT PRIOR TO DOING ANY WORK IN THE SANDY CITY RIGHT OF WAY. TRAFFIC PLAN, BONDING, AND INSURANCE WILL BE REQUIRED.

NOTE: NOTIFY SANDY CITY PUBLIC WORKS INSPECTION DEPARTMENT, 801-589-2999, 48 HOURS PRIOR TO BEGINNING CONSTRUCTION OF ANY ROADWAYS OR PUBLIC IMPROVEMENTS, INCLUDING SEWER FACILITIES. ALL INSPECTION MUST BE DONE PRIOR TO, OR CONCURRENT WITH, CONSTRUCTION. FAILURE TO MAKE THIS NOTIFICATION MAY RESULT IN THE UNCOVERING AND/OR REMOVAL OF ALL CONSTRUCTION DONE WITHOUT NOTIFICATION, AT THE DISCRETION OF THE CITY ENGINEER.

NOTE: ALL PUBLIC IMPROVEMENTS, WHICH ARE TO BE OWNED AND MAINTAINED BY SANDY CITY, SHALL BE CONSTRUCTED ACCORDING TO THE SANDY CITY STANDARD SPECIFICATIONS AND DETAILS FOR MUNICIPAL CONSTRUCTION (LATEST EDITION). THE SPECIFICATIONS CAN BE FOUND IN PDF FORMAT ONLINE AT WWW.SANDY.UTAH.GOV (CLICK ON 'DEPARTMENTS', THEN 'PUBLIC WORKS', THEN 'STANDARD SPECIFICATIONS').

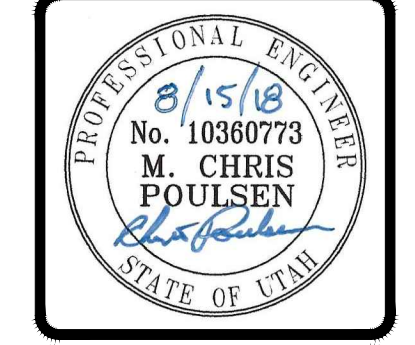
NOTE: ANY PROPOSED CHANGES TO THE APPROVED DESIGN SHALL BE REVIEWED AND APPROVED BY THE ENGINEER OF RECORD AND THE CITY ENGINEER.

NOTE: BUILDER/OWNER SHALL ANY EXISTING CURB & GUTTER ALONG THE FRONTAGE OF THIS PROJECT, THAT IS FOUND TO BE DEFECTIVE, AS DIRECTED BY THE SANDY CITY INSPECTOR.

NOTE: IF THE HEIGHT OF THE RETAINING WALL IS MORE THAN 4 FEET, IT SHALL BE DESIGNED BY A GEOTECHNICAL ENGINEER.

NO.	DATE	DESCRIPTION
1	08/15/18	REVISED PER CITY COMMENTS

DRAWN BY: SAM  
 CHECKED BY: MCP  
 FIELD/DATE: SURVEY 04/20/2018  
 DWG. FILE: 1701012\_SIT

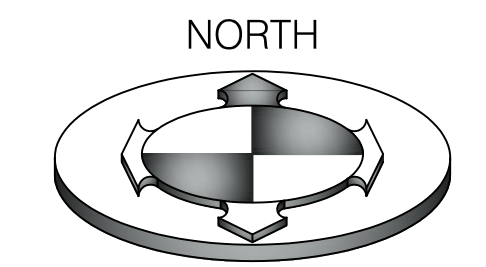


**BENCHMARK ENGINEERING & LAND SURVEYING**  
 9138 SOUTH STATE STREET SUITE #100  
 SANDY, UTAH 84070 (801) 542-7192  
 www.benchmarkcivil.com

**WINDFLOWER TOWNHOMES**  
 9349 WINDFLOWER LANE  
 SANDY, UTAH

PROJECT NO. 1701012  
**SITE PLAN**  
 CSP.01  
 3 OF 10





**GRAPHIC SCALE**  
(IN FEET)  
1 inch = 10ft.

CONSTRUCTION KEY NOTES REFERENCE		
NO.	DESCRIPTION	DETAIL
①	4" SSMH PER PER SSID STDS.	2/CDT.02
②	1-1/2" PVC WATER LINE	
③	1-1/2" WATER METER & VAULT PER APWA #522	4/CDT.01
④	1" POLY WATER SERVICE LINE	
⑤	8" PVC SDR-35 SEWER MAIN	
⑥	6" PVC SDR-35 SEWER LATERAL @ MIN. 1.00% SLOPE PER SSID STDS.	1/CDT.02
⑦	SEWER CLEAN OUT PER SSID STDS.	1/CDT.02
⑧	1-1/2" TYPE K COPPER WATER SERVICE LINE	
⑨	1-1/2" X 1-1/2" X 1" TEE	

**NOTE:**  
PRIOR TO FABRICATION OR CONSTRUCTION, BEGIN AT THE LOW END OF ALL GRAVITY UTILITY LINES AND VERIFY THE INVERT ELEVATION OF THE POINT OF CONNECTION AND NOTIFY ENGINEER IF THIS POINT IS HIGHER THAN SHOWN ON THE PLANS FOR A REDESIGN.

**NOTE:**  
POTHOLE TO IDENTIFY ANY CONFLICTS BEFORE ANY PIPE INSTALLATION. CONTACT ENGINEER IF ANY CONFLICTS ARE IDENTIFIED.

**NOTE:**  
UTILITY BOXES ARE TO BE PLACED AT LEAST 5' BEHIND THE ROW AND NEAR SIDE PROPERTY LINES.

**NOTE:**  
WATER METERS SHALL NOT BE INSTALLED IN DRIVEWAY.

- WATER NOTES:**
1. NOTIFY SANDY CITY PUBLIC UTILITIES INSPECTOR (801-568-7280), AT LEAST ONE BUSINESS DAY (24 HOURS) PRIOR TO BEGINNING CONSTRUCTION.
  2. A PRE-CONSTRUCTION MEETING IS REQUIRED ONCE FINAL APPROVAL HAS BEEN GRANTED. THE PRE-CONSTRUCTION MEETING SHALL BE SCHEDULED THROUGH SANDY CITY PUBLIC WORKS DEPARTMENT.
  3. ALL CONSTRUCTION SHALL CONFORM TO THE LATEST REVISION OF THE SANDY CITY STANDARD SPECIFICATIONS AND DETAILS FOR MUNICIPAL CONSTRUCTION AND/OR OTHER REQUIREMENTS AS SET FORTH IN THE PUBLIC UTILITIES FINAL REVIEW AND APPROVAL LETTER ESTABLISHED FOR THE DEVELOPMENT. SPECIFICATIONS AND DETAILS CAN BE OBTAINED ON THE SANDY CITY WEBSITE.
  4. SUBMITTALS ARE REQUIRED TO BE APPROVED BY THE CONSULTING ENGINEER FOR ALL BEDDING, BACKFILL, PIPE, METERS, BOXES, VAULTS, VALVES, FIRE HYDRANTS, BLOWOFFS, VAULTS, ETC. RELATING TO THE WATER SYSTEM. SUBMITTALS MUST HAVE SUFFICIENT INFORMATION TO SHOW THAT THE PROPOSED ITEMS CONFORM TO SANDY CITY STANDARDS AND SPECIFICATIONS.
  5. CONSTRUCTION WORK SHALL BE CONDUCTED IN ACCORDANCE WITH THE UTAH POLLUTION DISCHARGE ELIMINATION SYSTEM (UPDES) REGULATIONS.
  6. LOCATE WATER LINE 4 FEET OFF TOP OF CURB OR GUTTER ON THE NORTH AND/OR EAST SIDE OF ROADWAY.
  7. A MINIMUM OF 48-INCHES AND A MAXIMUM OF 60-INCHES OF COVER FROM THE TOP OF THE PIPE TO THE FINISH GRADE IS REQUIRED.
  8. FOR DUCTILE IRON PIPE, USE THICKNESS CLASS 52 OR BETTER.
  9. FOR POLYVINYL CHLORIDE (PVC) PIPE, USE CLASS DR-14 OR BETTER. 10 GAUGE WIRE SHALL BE PLACED ON TOP OF THE PIPE (PER SANDY CITY SPECIFICATIONS) FOR FUTURE RELOCATION. NO DEFLECTION IN PIPE JOINTS WILL BE ALLOWED ON PVC PIPES.
  10. ALL MECHANICAL JOINTS MUST BE RESTRAINED USING MEGA LUGS OR APPROVED EQUAL.
  11. USE 6-INCH COMPRESSION TYPE HYDRANT BY MUELLER CENTURION OR CLOW MEDALLION. EXISTING HYDRANTS REQUIRED FOR FIRE PROTECTION THAT DO NOT MEET CURRENT STANDARDS SHALL BE UPGRADED TO MEET CURRENT SANDY CITY STANDARDS AND SPECIFICATIONS.
  12. WHEN THE DISTANCE FROM THE WATER MAIN TO THE FIRE HYDRANT IS GREATER THAN 6 FEET AN ADDITIONAL AUXILIARY VALVE SHALL BE FLANGED TO THE FIRE HYDRANT.
  13. ALL DEAD ENDS SHALL BE PLUGGED WITH A SINK WASHOUT OR END WITH A FIRE HYDRANT.
  14. ALL DUCTILE IRON WATER LINES, FITTING, AND VALVES SHALL BE POLY-BAGGED IN ACCORDANCE WITH SANDY CITY STANDARDS AND SPECIFICATIONS.
  15. ALL WATER LINES SHALL BE BEDDED WITH SAND (6-INCHES MINIMUM BELOW AND 12-INCHES MINIMUM ON EACH SIDE AND ON TOP OF THE PIPE).

- SEWER CONSTRUCTION NOTES:**
1. SEWER IMPROVEMENTS SHALL BE CONSTRUCTED IN STRICT ACCORDANCE WITH SANDY SUBURBAN IMPROVEMENT DISTRICT (SSID) DESIGN STANDARDS AND CONSTRUCTION SPECIFICATIONS. COPIES OF THE DISTRICT STANDARDS AND SPECIFICATIONS ARE AVAILABLE AT THE DISTRICT OFFICE, 8855 S. 700 W. SANDY, UTAH 84070.
  2. VIDEO INSPECTION, AIR TESTS, VACUUM TESTS OF MANHOLES AND DEFLECTION TESTS SHALL BE PERFORMED ON ALL INSTALLED SEWER IMPROVEMENTS PRIOR TO FINAL ACCEPTANCE. ADDITIONAL TESTS MAY BE REQUIRED BY THE DISTRICT ENGINEER OR INSPECTOR. DEFECTS DESIGNATED BY THE DISTRICT ENGINEER OR INSPECTOR SHALL BE REPAIRED AT NO COST TO THE DISTRICT PRIOR TO ACCEPTANCE OF THE SEWER IMPROVEMENTS.

**CALL BEFORE YOU DIG. IT'S FREE & IT'S THE LAW**

BLUE STAKES OF UTAH  
UTILITY NOTIFICATION CENTER

1-800-662-4111  
www.bluestakes.org

PROJECT NO. 1701012

UTILITY PLAN

CUP.01  
4 OF 10

DATE: 08/15/18  
REVISIONS PER CITY COMMENTS

CHECKED BY: MCP  
DESIGNED BY: SURVEY  
DATE: 04/20/2018  
DWG FILE: 1701012\_SIT

SCALE: MEASURES SHOWN ON ALL SIZE SHEETS  
ADJUST ACCORDINGLY FOR REDUCED SIZE SHEETS

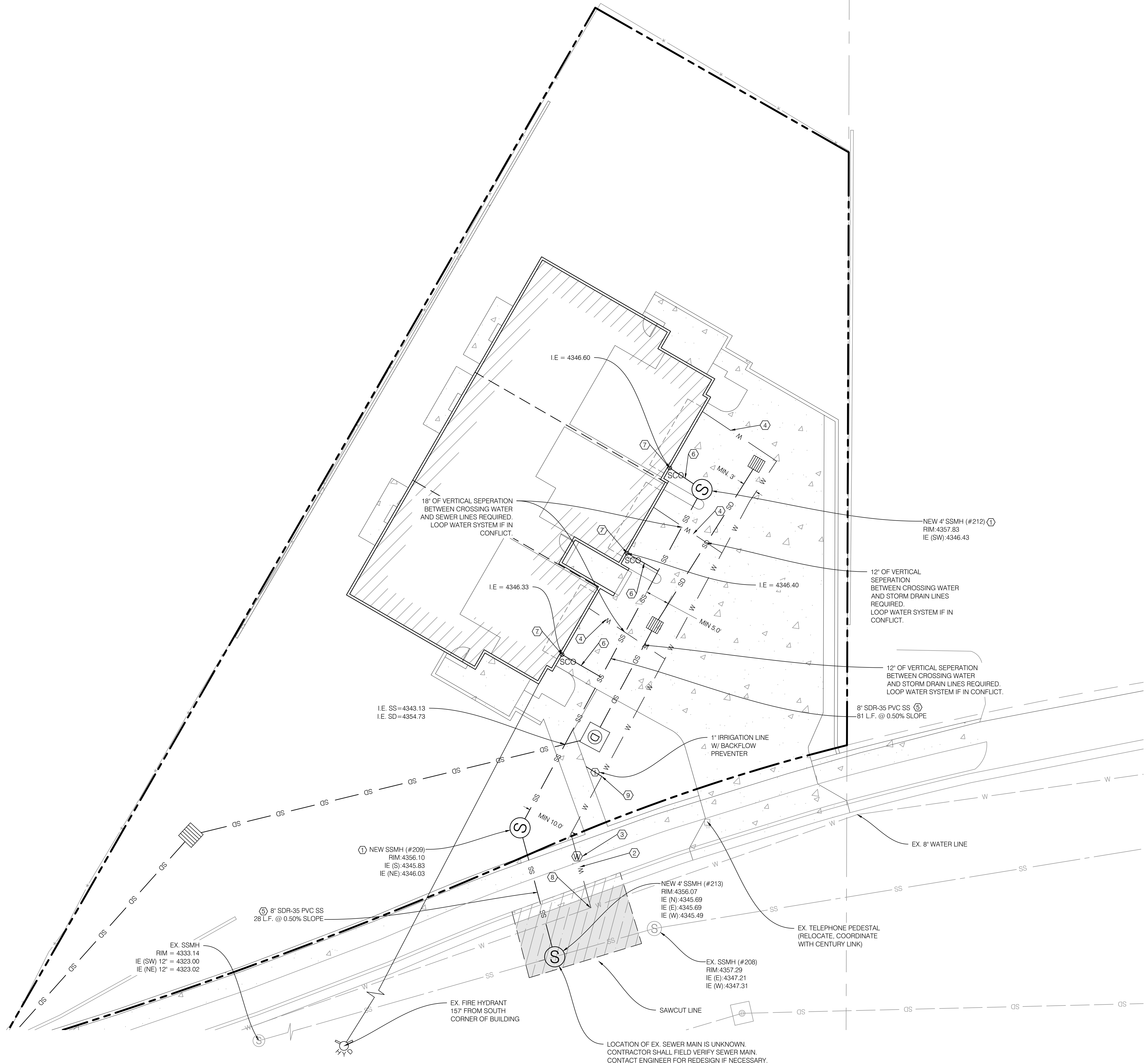
PROFESSIONAL ENGINEER  
No. 10360773  
M. CHRIS PULSEN  
STATE OF UTAH

**BENCHMARK ENGINEERING & LAND SURVEYING**

9138 SOUTH STATE STREET SUITE #100  
SANDY, UTAH 84070 (801) 542-7192  
www.benchmarkcivil.com

**WINDFLOWER TOWNHOMES**

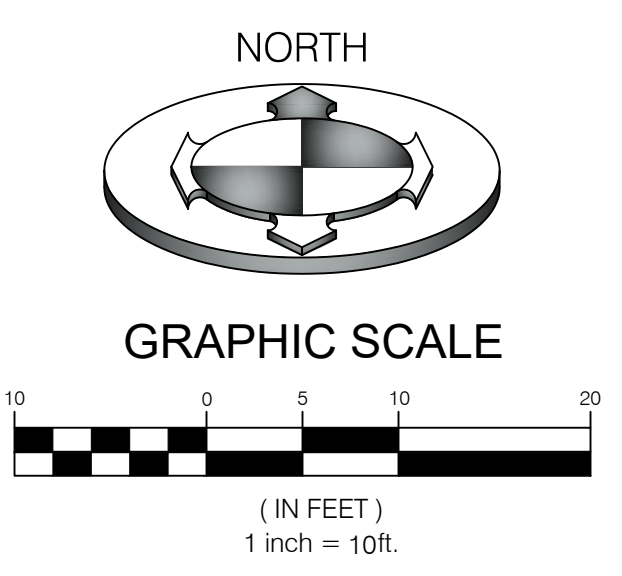
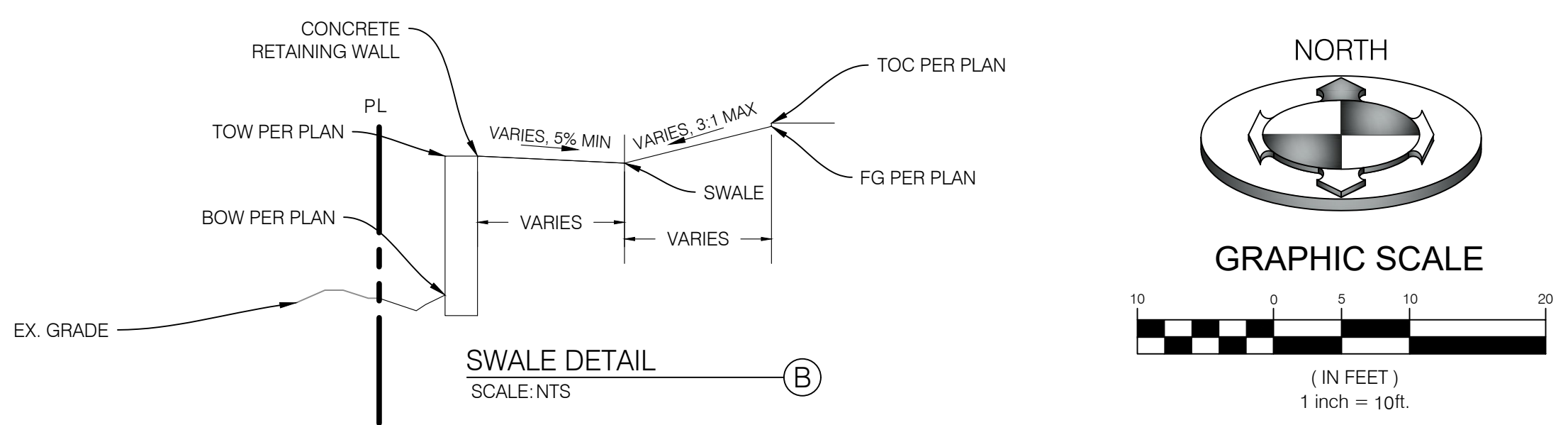
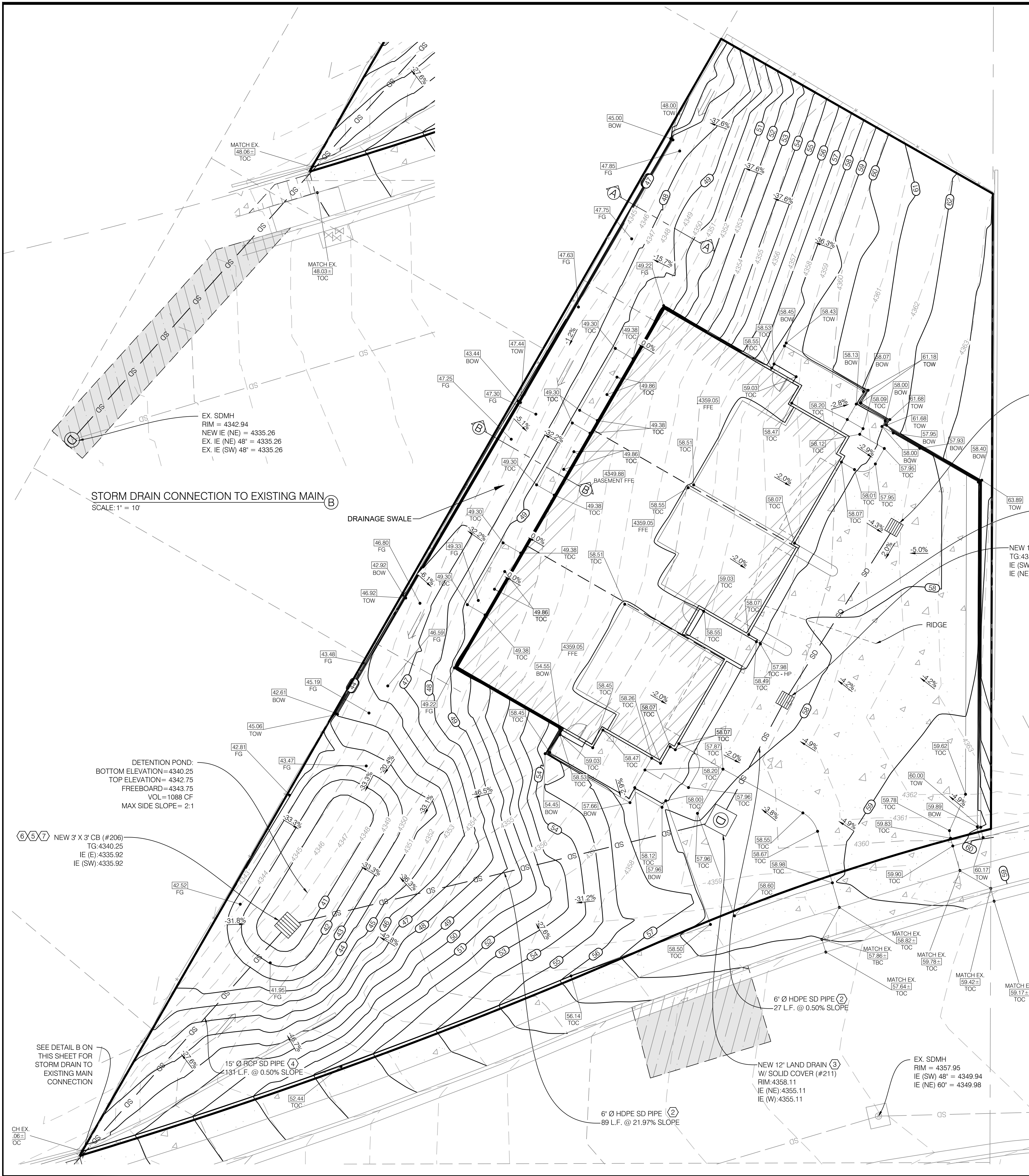
9349 WINDFLOWER LANE  
SANDY, UTAH



PROJECT NO. 1701012

UTILITY PLAN

CUP.01  
4 OF 10



BENCHMARK:  
BRASS CAP AT THE SOUTHEAST  
CORNER OF SECTION 2, TOWNSHIP  
3 SOUTH, RANGE 1 WEST, SALT  
LAKE BASE AND MERIDIAN.  
ELEVATION 4364.58  
NAVD 88 DATUM

NOTE:  
DRIVEWAYS MUST BE SLOPED AWAY FROM  
STRUCTURES AT A MINIMUM OF 2% AND A  
MAXIMUM OF 12%.

NOTE:  
INSTALL 12" Ø RCP CULVERTS AT DRIVEWAYS  
THAT INTERSECT DRAINAGE SWALES.

NOTE:  
POTHOLE TO IDENTIFY ANY CONFLICTS BEFORE ANY PIPE  
INSTALLATION. CONTACT ENGINEER IF ANY CONFLICTS ARE  
IDENTIFIED.

NOTE:  
PRIOR TO FABRICATION OR CONSTRUCTION, BEGIN AT THE  
LOW END OF ALL GRAVITY UTILITY LINES AND VERIFY THE  
INVERT ELEVATION OF THE POINT OF CONNECTION AND  
NOTIFY ENGINEER IF THIS POINT IS HIGHER THAN SHOWN ON  
THE PLANS FOR A REDESIGN.

NOTE:  
FOLLOW ALL RECOMMENDATIONS OF THE APPROVED  
GEOTECHNICAL REPORT. SANDY CITY STANDARD  
SPECIFICATIONS AND DETAILS SHALL GOVERN. HOWEVER,  
UNLESS GEOTECHNICAL REPORT RECOMMENDATIONS ARE  
MORE STRINGENT.

GRADING AND DRAINAGE KEY NOTES REFERENCE

NO.	DESCRIPTION	DETAIL
1	GRADE SITE TO ELEVATIONS SHOWN ON PLAN	
2	6" DIAMETER HDPE ADS N-12 STORM DRAIN LINE	
3	12" LAND DRAIN (NYLOPLAST OR APPROVED EQUAL)	4/CDT.03
4	15" RCP CLASS III STORM DRAIN LINE	
5	2" ORIFICE PLATE	3/CDT.01
6	18 F SNOUT	3/CDT.02
7	3X3 CATCH BASIN	2/CDT.01

**STORM DRAINAGE CALCULATIONS**  
**Rational Method (Q=CIA)**

Area Identification (A)	Rational Coefficient (C)	C*A
Roof = 3,582	0.9	3223.8 S.F.
Pavement = 4,219	0.9	3797.1 S.F.
Landscaping = 11,154	0.2	2230.8 S.F.
Sum: 18955 S.F.		Sum: 9251.7 S.F.

SANDY HYDROGRAPH (10 YEAR STORM)

Time (min)	Intensity (in/hr)	Rainfall (inches)	Rainfall Excess (cu.ft.)	Allowed Discharge (cu.ft)	Volume to Detain (cu.ft)
15	2.17	0.343	418	78	340
30	1.37	0.343	682	157	526
60	0.89	0.445	1025	313	712
120	0.52	0.520	1426	627	800
180	0.39	0.390	1727	940	787
360	0.24	0.720	2282	1880	402
720	0.14	0.840	2930	3760	0

Detention Calculations  
Pond Volume  
Pond 1 Civil 3D = 1,088 cf

Is there adequate storage?  
Storage Provided = 1,088 cf  
Req. Storage = 800 cf YES

Orifice Design:  
The storm runoff will be detained at 0.2 cfs/acre

$$Q = C_d A_o \sqrt{2gh}$$

Total acreage of development: 0.44 acres  
Allowable discharge: 0.2 cfs/acre  
Max head: 2.00 ft  
Design diameter for new orifice: 1.5 inch \*  
\* Use 2.0 Orifice plate

- STORM WATER NOTES:
- NOTIFY SANDY CITY PUBLIC UTILITIES INSPECTOR (801-568-7280), AT LEAST ONE BUSINESS DAY (24 HOURS) PRIOR TO BEGINNING CONSTRUCTION.
  - A PRE-CONSTRUCTION MEETING IS REQUIRED ONCE FINAL APPROVAL HAS BEEN GRANTED. THE PRE-CONSTRUCTION MEETING SHALL BE SCHEDULED THROUGH SANDY CITY PUBLIC WORKS DEPARTMENT.
  - ALL CONSTRUCTION SHALL CONFORM TO THE LATEST REVISION OF THE SANDY CITY STANDARD SPECIFICATIONS AND DETAILS FOR MUNICIPAL CONSTRUCTION AND/OR OTHER REQUIREMENTS AS SET FORTH IN THE PUBLIC UTILITIES FINAL REVIEW AND APPROVAL LETTER ESTABLISHED FOR THE DEVELOPMENT. SPECIFICATIONS AND DETAILS CAN BE OBTAINED ON THE SANDY CITY WEBSITE.
  - SUBMITTALS ARE REQUIRED TO BE APPROVED BY THE CONSULTING ENGINEER FOR ALL BEDDING, BACKFILL, PIPE AND STRUCTURES (INLET BOXES, COMBO BOXES, AND JUNCTION BOXES). SUBMITTALS MUST HAVE SUFFICIENT INFORMATION TO SHOW THAT THE PROPOSED ITEMS CONFORM TO SANDY CITY STANDARDS AND SPECIFICATIONS.
  - CONSTRUCTION WORK SHALL BE CONDUCTED IN ACCORDANCE WITH THE UTAH POLLUTION DISCHARGE ELIMINATION SYSTEM (LPDES) REGULATIONS.
  - ALL MATERIALS AND WORK DONE IN UDOT RIGHT-OF-WAY SHALL CONFORM TO UDOT STANDARDS AND SPECIFICATIONS.
  - NON-SHRINK GROUT SHALL BE USED WHEREVER GROUT IS REQUIRED FOR THE STORM DRAIN FACILITIES.
  - CUT PIPES OFF FLUSH WITH THE INSIDE WALL OF THE BOX OR MANHOLE AND GROUT AT CONNECTION OF PIPE TO BOX TO A SMOOTH FINISH. ADDITIONALLY, ALL JAGGED OR SHARP EDGES AT PIPE CONNECTIONS ARE TO BE REMOVED AND GROUTED SMOOTH. GROUT BETWEEN GRADE RINGS. FOR EACH INLET BOX THAT IS LOCATED NEXT TO A CURB, THE CURB AND GUTTER CONTRACTOR IS RESPONSIBLE TO REMOVE ALL PROTRUDING, JAGGED OR SHARP CONCRETE EDGES AND TO GROUT BETWEEN BOTTOM OF INLET LID FRAME AND TOP OF CONCRETE BOX. GROUT TO CREATE A SMOOTH, BEVELED TRANSITION AT ALL EDGES IN CLEAN OUT AND INLET BOXES. GROUT AROUND ALL EDGES OF THE RESTRICTIVE ORIFICE PLATE.
  - REMOVE SWAP TIES, NAILS, REBAR AND OTHER PROTRUSIONS FROM THE BOX OR PIPE INSIDE SURFACE, AS WELL AS ALL FORM WORK, PLASTIC AND CARDBOARD.
  - SILT AND DEBRIS ARE TO BE CLEANED OUT OF ALL INLET BOXES, COMBO BOXES, JUNCTION BOXES AND PIPE. THE BOXES AND PIPES ARE TO BE MAINTAINED IN A CLEAN CONDITION UNTIL AFTER THE FINAL BOND RELEASE INSPECTION.
  - CLEAN OFF ALL MANHOLE LIDS AND INLET GRATES OF ASPHALT, CONCRETE, TAR OR OTHER ADHESIVES TO ALLOW ACCESS.
  - WHERE A SLUMP IS REQUIRED, THE SANDY CITY PUBLIC UTILITIES INSPECTOR SHALL BE CONTACTED PRIOR TO CONSTRUCTION TO PROVIDE AN OPPORTUNITY TO CHECK THE VOLUME OF GRAVEL AND GRAVEL GRADATION.
  - SIGNS MUST BE POSTED NEAR EACH INLET BOX LOCATED IN A DRINKING WATER RECHARGE ZONE WITH THE FOLLOWING WORDS "WARNING THIS IS A DRINKING WATER AQUIFER RECHARGE AREA. DISPOSAL OF ANY WASTE MATERIALS IN THE STORM WATER IS STRICTLY PROHIBITED".
  - ALL INLET, COMBO, AND JUNCTION BOXES SHALL BE PLACED ON 12-INCH (MIN.) COMPACTED STABILIZATION MATERIAL.
  - A VIDEO OF ALL PIPES MUST BE COMPLETED BEFORE THE 80% OR 90% BOND RELEASE AND AGAIN BEFORE FINAL BOND RELEASE.
  - A REPRESENTATIVE OF THE MANUFACTURER OR SUPPLIER SHALL BE ON-SITE DURING INSTALLATION OF OIL/WATER SEPARATORS AND UNDERGROUND DETENTION/RETENTION SYSTEMS. THE MANUFACTURER OR SUPPLIER SHALL PROVIDE A LETTER STATING THAT THE SYSTEM WAS INSTALLED PER MANUFACTURER'S SPECIFICATIONS. IF IT IS UNKNOWN WHETHER A REPRESENTATIVE IS REQUIRED TO BE PRESENT DURING INSTALLATION, CONTACT THE SANDY CITY PUBLIC UTILITIES INSPECTOR.
  - A LETTER FROM THE CONSULTANT ENGINEER IS REQUIRED TO BE SUBMITTED TO SANDY CITY PUBLIC UTILITIES DEPARTMENT, PRIOR TO 90% BOND RELEASE, VERIFYING THAT THE VOLUME FOR RETENTION/DETENTION PONDS WAS INSTALLED PER THE APPROVED PLANS.

NOTE:  
PROVIDE SLOPE AWAY FROM BUILDINGS THAT COMPLIES WITH THE REQUIREMENTS OF THE INTERNATIONAL BUILDING CODE (2% MINIMUM/12% MAXIMUM ON HARD SURFACES; 5% MINIMUM/21% MAXIMUM IN LANDSCAPE AREAS - FOR MINIMUM 10 FEET IN ANY CASE).

CALL BEFORE YOU DIG.  
IT'S FREE & IT'S THE LAW.

BLUE STAKES OF UTAH  
UTILITY NOTIFICATION CENTER

1-800-662-4111  
www.bluestakes.org

PROJECT NO. 1701012

GRADING & DRAINAGE PLAN

CGD.01  
5 OF 10

BENCHMARK ENGINEERING & LAND SURVEYING  
9349 WINDFLOWER LANE  
SANDY, UTAH

WINDFLOWER TOWNHOMES

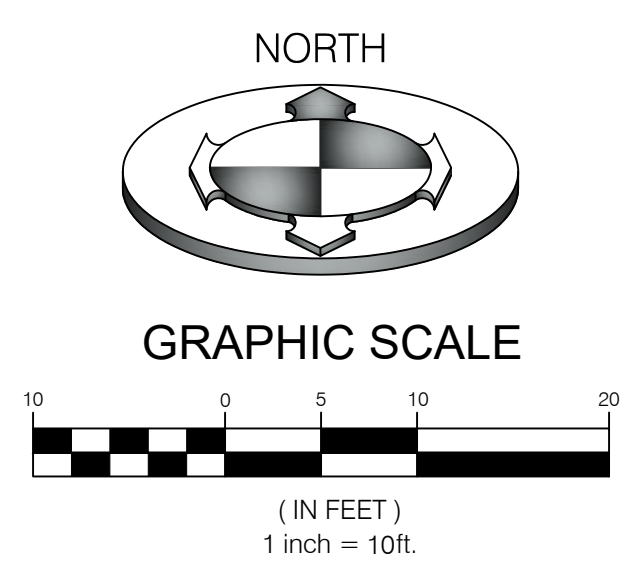
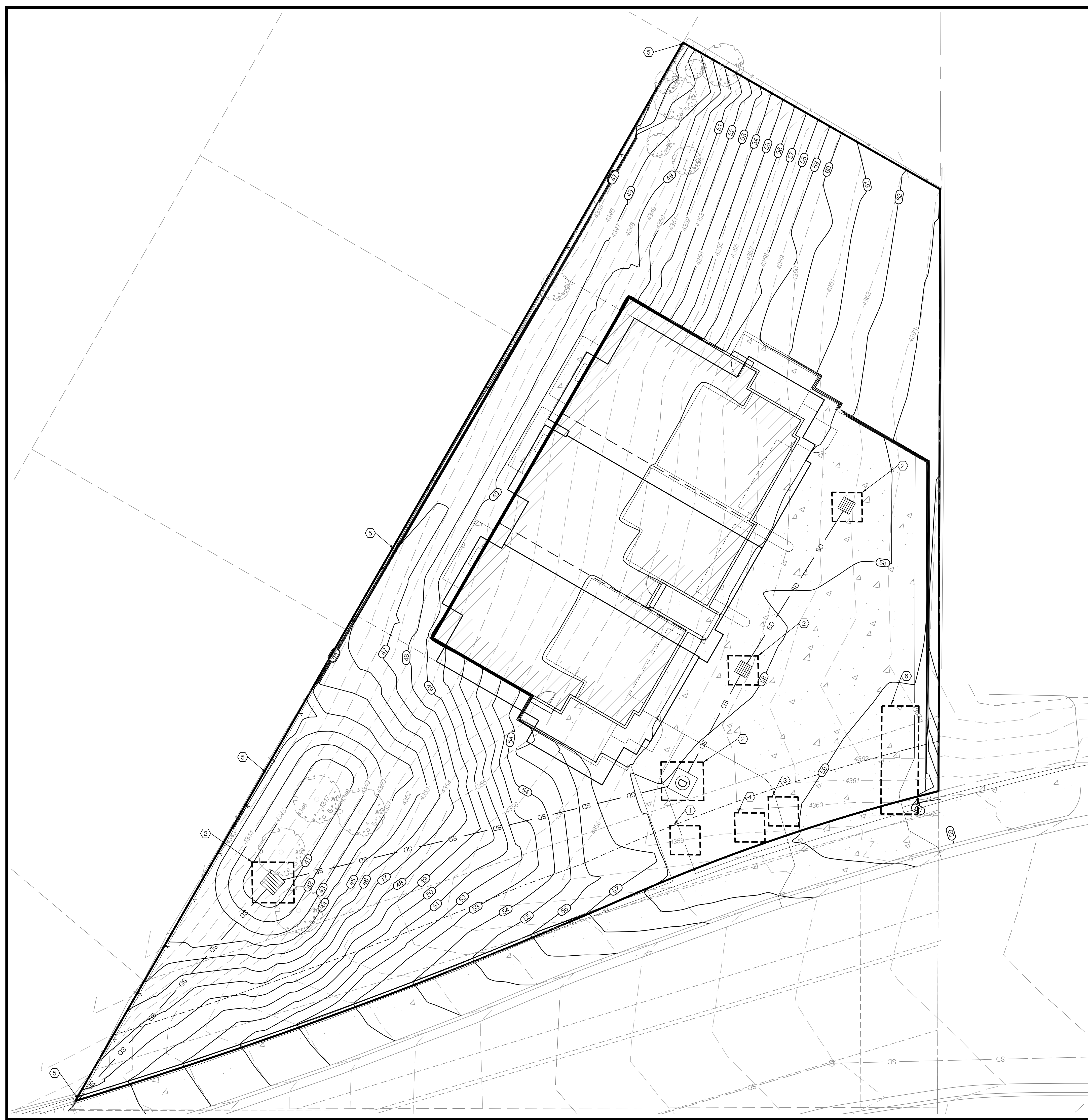
1701012

DATE: 04/20/2018  
FILED BY: MOP  
DRAWN BY: SAM

REVISIONS PER CITY COMMENTS

SCALE MEASURES \*INCH ON FULL SIZE SHEETS  
ADJUST ACCORDINGLY FOR REDUCED SIZE SHEETS

PROFESSIONAL ENGINEER  
M. CHRIS POULSEN  
No. 10360773  
STATE OF UTAH



**SWPPP KEY NOTES REFERENCE**

PROVIDE, INSTALL AND/OR CONSTRUCT THE FOLLOWING PER THE SPECIFICATIONS GIVEN OR REFERENCED AND THE DETAILS NOTED AND AS SHOWN ON THE CONSTRUCTION DRAWINGS.

NO.	DESCRIPTION	DETAIL
①	CONCRETE WASTE MANAGEMENT	1/CEP.02
②	SEDIMENT BARRIER	2/CEP.02
③	MATERIALS STORAGE	3/CEP.02
④	PORTABLE TOILETS	4/CEP.02
⑤	SILT FENCE	6/CEP.02
⑥	TEMPORARY CONSTRUCTION ENTRANCE	7/CEP.02

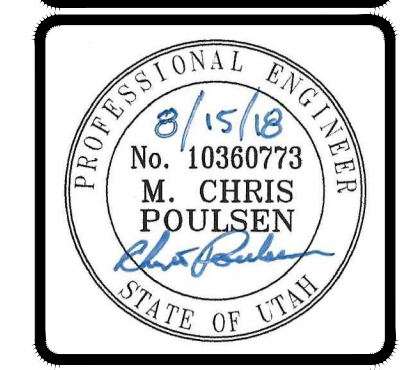
NOTE:  
THE USE OF MOTOR OILS AND OTHER PETROLEUM-BASED OR TOXIC LIQUIDS, FOR DUST SUPPRESSION, IS ABSOLUTELY PROHIBITED.

NOTE:  
DUST, MUD, AND EROSION SHALL BE ADEQUATELY CONTROLLED BY WHATEVER MEANS NECESSARY, AND THE ROADWAY SHALL BE KEPT FREE OF MUD AND DEBRIS AT ALL TIMES.

NO.	DATE	DESCRIPTION
1	08/15/18	REVISED PER CITY COMMENTS

OWNED BY: SAM  
CHECKED BY: MCP  
FIELD/DATE: SURVEY 04/20/2018  
DWG FILE: 1701012\_SITE

SCALE: MEASUREMENTS SHOWN ON ALL SIZE SHEETS  
ADJUST ACCORDINGLY FOR REDUCED SIZE SHEETS



**BENCHMARK  
ENGINEERING &  
LAND SURVEYING**

9338 SOUTH STATE STREET SUITE #100  
SANDY, UTAH 84070 (801) 542-7192  
www.benchmarkcivil.com

**WINDFLOWER TOWNHOMES**

9349 WINDFLOWER LANE  
SANDY, UTAH

PROJECT NO. 1701012

**EROSION CONTROL PLAN**

CEP.01  
6 OF 10

CALL BEFORE YOU DIG.  
IT'S FREE & IT'S THE LAW.

BLUE STAKES OF UTAH  
UTILITY NOTIFICATION CENTER

1-800-662-4111  
www.bluestakes.org