



SANDY CITY COMMUNITY DEVELOPMENT

JAMES SORENSEN
COMMUNITY DEVELOPMENT
DIRECTOR

KURT BRADBURN
MAYOR

MATTHEW HUISH
CHIEF ADMINISTRATIVE OFFICER

MEMORANDUM

April 18, 2019

To: Planning Commission
From: Community Development Department
Subject: UTA 11400 South Park and Ride – Parking and Safety Plan CUP-06-10-1384
 Update - Annual Update (2018)
 361 E. 11400 S. R-1-8 Zone
[Community # 11 – Crescent]

HEARING NOTICE: *This item has been noticed to property owners within a specified area around the stadium property, which is beyond 600 feet.*

PROPERTY CASE HISTORY	
Case Number	Case Summary of Significant Changes or Recommendations
CUP-6-10-1384	On June 14, 2011, the City Council approved the conditional use for a Park and Ride Facility located at 11400 South and the TRAX line. After much discussion and several meetings with the applicant, staff, and residents, 34 conditions were considered, 32 of which were finalized.
CUP-6-10-1384	On March 21, 2013 UTA presented the parking and safety plans. Included in that report was a request to modify two conditions of approval. The first change was to increase the height and type of lighting to be installed within the parking lot. The second was to require an increase in police patrols by UTA based on a 3-month rolling average of crimes occurring at the park and ride lot combined with SCPD reported crimes within .5 miles of the park and ride lot. By way of example, if the crime rate were to increase 20% over the baseline, UTA would add an additional daily patrol to their schedule. Both of these modifications were approved by the Planning Commission.
CUP-6-10-1384	During the April 2015 update and review, staff suggested to eliminate the PC annual review and leave it up to Staff. The Planning Commission forwarded a positive recommendation, however, the City Council did not approve the recommended change.

DESCRIPTION OF REQUEST

The applicant, the Utah Transit Authority (UTA) is complying with the conditions of their original Conditional Use Permit approval in bringing an update of their Parking and Safety Plan to the Planning Commission for review and approval. A short summary, along with the full update and report, is included in the packet. Representatives from UTA will be at the Planning Commission meeting to discuss the report in full detail.

Condition #11(a) required a parking management plan to be put in place, and in part states that, "approval of the parking management plan shall then occur on a semi-annual basis for two years following the opening of the park and ride lot for use, then annually thereafter." Since the opening of the facility, UTA has continued to work closely with staff, including the Police Department, in monitoring and addressing both parking concerns and safety concerns as they relate to the lot.

In reviewing the current report and data, it appears that crime incidents and parking issues have been adequately addressed by the applicant and that they work swiftly to address concerns of the residents as they pertain to their operations. The number of incidents (not including Public Order and Public Pease) remains fairly stable and close to those that existed prior to the opening of the station. There was an increase in 2016 to 49 incidents, but 25 of those were Public Order incidents (Ambulance/Medical; Assist Citizen, Other Agency, UTA; Fire; Personal Security/Welfare Check and Public Intoxication). The number of incidents decreased in 2017 to 29 with 20 of those being Public Order incidents and then up to 53, with 27 of those being Public Order incidents. The number of incidents outside of Public Order incidents have averaged between 20 and 25 since opening. The number of Sandy City Police Department cases within ½ mile of this station have decreased since the opening of the station.

UTA was required to provide four security patrols per day and will continue to maintain this level of service since it is their standard procedure. They also have made efforts to address any concerns brought to their attention, including installing a fence along 300 East in June 2015, in addition to "No Trespassing" signs along the vacant lot to the west as well as signs to deter parking within the adjacent neighborhood.

NOTICE

This item was noticed to property owners within 600 feet of the site and included an additional expanded area to ensure adequate notification to all property owners within the neighborhood adjacent and to the north of the site.

RECOMMENDATION

Staff recommends that the Planning Commission review and approve the 2018 annual updated Parking Management and Safety Plan for the UTA 11400 South Park and Ride facility lot located at 361 East 11400 South.

Planner:



Brian McCuiston
Planning Director

Reviewed by:

Parking and Safety Report

To: Brian McCuistion, Sandy City Planning Director
From: E. Gregory Thorpe, PE, Project Manager
 Grey Turner, PE, Program Manager
Date: March 25, 2019
Re: Parking and Safety Management Plan - Executive Summary, Report and Graphs
 2018 Annual update for the 114th South Crescent View Park-and-Ride Lot

Executive Summary-

The five plus years after the opening of the Draper LRT Extension on August 16, 2013 have been very successful. For the past two years, the Crescent View Park-and-Ride Lot has averaged approximately 60% to 70% full on a weekdays and 5% to 35%.on weekends as noted in the two tables below, with isolated instances of 85% to 90% full. The average, maximum and minimum number of parking stalls occupied thought the past two plus years is noted below.

<u>Jan to Dec 2018</u>	<u>Sun</u>	<u>Mon</u>	<u>Tue</u>	<u>Wed</u>	<u>Thu</u>	<u>Fri</u>	<u>Sat</u>
Crescent View Average of 248 Stalls occupied	12	160	168	158	154	130	21
Percent	5%	64%	68%	64%	62%	52%	9%
Max	53	201	210	202	213	191	87
Percent	21%	81%	85%	81%	86%	77%	35%
Min	5	40	140	71	80	66	5
Percent	2%	16%	56%	29%	32%	27%	2%

<u>Sept 2016 to Sept 2017</u>	<u>Sun</u>	<u>Mon</u>	<u>Tue</u>	<u>Wed</u>	<u>Thu</u>	<u>Fri</u>	<u>Sat</u>
Crescent View Average of 248 Stalls occupied	12	161	169	162	167	125	25
Percent	5%	65%	68%	65%	68%	50%	10%
Max	39	229	209	192	210	144	89
Percent	16%	92%	84%	77%	85%	58%	36%
Min	2	94	128	107	134	85	5
Percent	1%	38%	52%	43%	54%	34%	2%

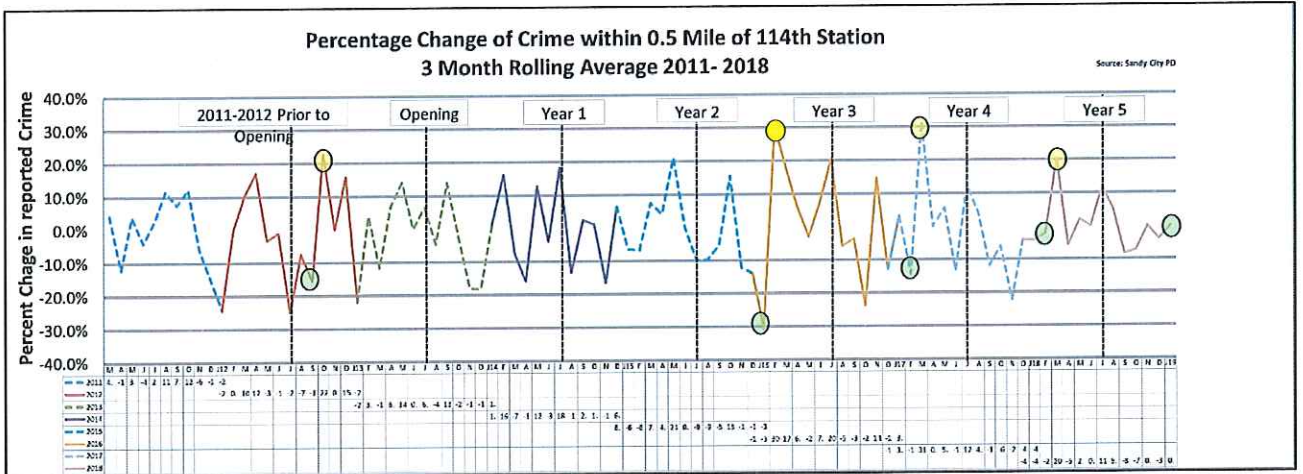
The incident reports for 2012 to 2018 are included in the appendix. The total and average per month as reported by UTA PD for the 114th South Crescent View station are noted in the table below. There was an increase in incidents in 2016 primarily due to 29 incidents of Public Order and Public Pease. Then a reduction in 2017 to 9 incidents followed up an uptick again in 2018 to 27 incidents. **Otherwise the number of incidents in other classifications of incidents have been averaging around 20 to 25 since opening.**

Year	11400 S Station Incidents less Fare Evasion		
2012	n/a	n/a	
2013	4	0.90	incidents per month for 4.5 months
2014	9	0.75	incidents per month
2015	24	2.00	incidents per month
2016	49	4.08	incidents per month
2017	29	2.42	incidents per month
2018	53	4.42	Incidents per month

UTA has installed “No Trespassing” signs along the vacant lot to the west and installed a fence along 300 East in June 2015 to prevent trespass through the vacant lot to the west of the parking lot. UTA Police are patrolling this park and ride lot and station on a regular basis during their patrols and are providing a minimum average of 4 daily patrols daily to ensure compliance and to curtail crime. No new calls or complaints to our customer call center or items of concern were brought to UTA’s attention in 2016 or to date in 2017. Sandy City has also reported no new complaints over the past two years.

The Sandy City Police Dispatch Case Reports within ½ Mile of Crescent View Station for 2011 to 2018 are noted in the table and graph of the 3 month rolling average below. The 2014 through 2018 totals are tracking about 20 percent less than the 2011 to 2013 totals prior to the opening of the Station. The average incidents per month for 2011 to 2013 are approximately 27 and at an average of 22 per month since the opening of the Draper LRT Extension. 2018 recorded the lowest number of cases in the past 8 years at 208. **The number of cases continues to show a downward trend.**

Sandy City Police Department Cases Within 1/2 Mile of 361 East 11400 South January 1, 2011 - December 31, 2018													
Year	Jan	Feb	Mar	Apr	May	Jun	Jul	Aug	Sep	Oct	Nov	Dec	Total
2011	29	24	30	20	27	27	22	37	34	35	31	21	337
2012	18	31	29	34	28	28	16	23	19	33	23	33	315
2013	17	26	25	22	38	25	28	34	39	26	19	26	325
2014	25	31	22	18	41	18	25	33	19	29	17	21	299
2015	29	15	29	32	31	29	23	23	25	34	13	15	298
2016	15	26	25	19	24	30	34	19	27	15	28	18	280
2017	17	19	35	17	23	25	24	26	16	21	12	14	249
2018	19	11	23	16	12	23	22	15	18	18	15	16	208
Avg.	21	23	27	22	28	26	24	26	25	26	20	21	289



As can be seen on the chart, on two occurrences the rolling average approached 30% but that was due to the preceding 3 months of very low incidents (shown in green) with a following month of a higher number of incidents (shown in yellow). So while it appeared crime increased, in reality it is a statistical anomaly that the 3 month rolling average overly inflates due to low monthly incidents in November, December and January.

In summary, the two primarily important concerns of parking and crime are in compliance with the final conditions set forth by the Sandy City Council in June of 2011 for the Crescent View station park and ride lot. The following report provides more details.

Introduction-

The following information is provided as an update to the memorandum presented in September 2017. This report represents the first 5 plus years of operation after the August 16, 2013 opening of the Draper TRAX Extension to address the 114th South park-and-ride lot parking and safety management plans as requested in the final conditions of approval by the Sandy City Council in June of 2011. The Council requested that UTA provide and present a parking management plan to contend with potential off-site parking issues in conjunction with a safety plan for the park-and-ride lot. These plans were presented, reviewed, and approved by the Sandy City Planning Commission on March 21, 2013 with minor modifications to portions of the text as follows.

The Parking Plan had modifications including allowing energy efficient LED lighting from the previously approved metal halide and also allowing the LED lights to be installed at 15' feet above grade instead of 14'.

The Safety Plan had one modification in Section 13.d where the trigger to increase daily UTAPD officer patrols was raised from 15% to 20% for a 3-month rolling average. This was due to the 15% rolling average calculation being exceeded twice previously to the opening of the Draper TRAX extension. Updated graphs are included in this report.

Parking Management Plan- The Sandy City Council requested that UTA present a parking management plan to contend with potential off-site parking issues to be reviewed and approved by the Planning Commission through a public hearing process no less than thirty days prior to the opening of the park-and-ride lot for public use. UTA presented the plan at the March 21, 2013 public hearing which was then approved by the Planning Commission. Approval of this parking management plan was then occur on a semi-annual basis for two years following the public opening of the park-and-ride lot, and then on an annual basis thereafter. This report covers represents the first 5 plus years of operation.

Safety Management Plan- The safety management plan was to be presented, reviewed, and approved by the Planning Commission through a public hearing process no less than thirty days prior to the opening of the park- and-ride lot for public use. UTA presented the plan in conjunction at the same Planning Commission meeting and it was also approved. The plan included the elements requested in the final conditions of approval. These are conditions and compliance are noted in the following report.

Parking Management Plan-

The parking management plan addressed the concerns raised in item number 11 of the final conditions of approval set forth by the Sandy City Council in June of 2011. It required that UTA perform the following to mitigate parking problems in nearby residential areas: (The conditions are shown in italics with UTA's response shown in regular font.)

11) Present a parking management plan to contend with potential off-site parking issues to be reviewed and approved by the Planning Commission through a public hearing process no less than thirty days prior to the opening of the park-and-ride lot for use. Approval of the parking management plan shall then occur on a semi-annual basis for two years following the opening of the park-and-ride lot for

use, then annually thereafter.

a) *Conduct joint meetings with residents to the north and east of the UTA property, Sandy City Police Department (SCPD), and the Sandy City Community Development (SCCD), to review and discuss the plan, and to formulate solutions to existing overflow parking issues. **COMPLETED***

Utah Transit Authority hosted public meetings in conjunction with established community meetings to review and address parking issues which may have arose with use of the park-and-ride lot. These meetings occurred on a semi-annual basis for two years following the opening of the park-and-ride lot for use and then annually.

It is the goal of these meetings was to discuss the parking management plan's effectiveness and how to formulate collaborative solutions to resolve issues.

The schedule of past and future meetings shall roughly follow the outline below:

March 2013:	Joint meeting with residents, SCPD, and SCCD – Completed
April 2013:	Final approval of parking management and safety plans – Completed
May 2013:	Public meeting – Completed
July 2013:	Opening of park-and-ride lot – Completed
February 2014:	1st semi-annual review -Completed
August 2014:	2nd semi-annual review- Completed
February 2015:	3rd semi-annual review- Completed
August 2015:	4th semi-annual review- Completed
August 2016:	1st annual review- Completed
September 2017:	2nd annual review- Completed
April 2019:	3rd annual review- Pending PC meeting
March 2020:	4th annual review- Future PC meeting

b) *Erect “NO TRAX PARKING” signs at entrance to all nearby residential streets in Sandy including: La Ver, Lane, Jerard Way, Crescent Vista Lane, O’Henry Road, Oak Bush Drive, and Abbottsford Lane. **COMPLETED***

UTA installed “No TRAX Parking” signs at entrances to the above listed residential streets. Sandy City may elect to begin a residential parking permit program to be administered, patrolled, and enforced by Sandy City and SCPD. Please refer to appendix B for a map showing the areas suggested for inclusion for a residential parking permit program, and to the text in appendix B for Article 24: Permit Parking Areas.

c) *A defined trigger for lot expansion on the Lloyd property which is being acquired by UTA. **COMPLETED***

If the SCPD is unable to prevent illegal parking in nearby residential areas though citations and education then Sandy City may discuss with UTA the possibility of further developing the vacant property to the west of the 114th South park-and-ride lot to full build-out and capacity. Further,

UTA will pursue expansion of the park-and-ride lot when the parking lot appears to be consistently reaching capacity on a weekday monthly average. Current use is averaging only 60 to 70% as noted previously and does not warrant expansion into the adjacent property.

- d) *An education program to inform UTA riders boarding at 114th South of the parking options available and to identify prohibited parking areas. **COMPLETED***

UTA installed informative signs at the 114th South park-and-ride lot directing users to other available park-and-ride lots. These signs also give instructions prohibiting parking in surrounding neighborhoods and along 114th South.

- e) *Reader board installation provisions and parameters, which at a minimum shall be that upon occurrence of the park-and-ride lot reaching peak parking demand (measured at 12 noon) at least 40% of the time reader boards shall be placed on entrance monument sign and/or along 114th South in both directions of this proposed parking lot, that displays space availability in this lot and in the adjacent park-and-ride lots within the TRAX system (particularly 11800 South and 12300 South park-and-ride lots) to educate patrons of other legal TRAX parking options. **COMPLETED***

UTA installed an electronic reader board facing both directions on 114th South. This reader board displays if the park-and-ride lot is at full capacity. This reader board also displays if there is parking availability open at the nearby 118th South and 123rd South park-and-ride lots.

The parking management plan should also, but is not required to, address such issues as:

- i. *The use of the LDS Church parking lot just east of the corridor in Draper. **PENDING IF NEEDED***

The LDS Church parking lot located at 114th South and 552 East in Draper will be considered for future TRAX day-use parking. This will require an agreement between UTA and the LDS Church. UTA will pursue entering into such an agreement when the parking lot appears to be consistently reaching capacity on a weekday monthly average.

- ii. *Street parking on Draper side of 114th South. **COMPLETED***

Signage was installed instructing TRAX users that parking is not allowed on 114th South.

- iii. *Potential implementation of a permit parking area in the neighborhoods to the north and east of the subject property including nearby residential streets in Sandy: La Vera Lane, Jerard Way, Crescent Vista Lane, O'Henry Road, Oak Bush Drive, and Abbottsford Lane. **PENDING IF NEEDED***

UTA installed "No TRAX Parking" signs at entrances to the above listed residential streets. Sandy City may elect to begin a residential parking permit program to be administered, patrolled, and enforced by Sandy City and SCPD.

Please refer to appendix B for a map showing the areas suggested for inclusion for a residential

parking permit program, and to the text in appendix B for Article 24: Permit Parking Areas.

Safety Management Plan

The safety management plan below is to address the concerns raised in item number 13 and 20 of the final conditions of approval set forth by the Sandy City Council in June of 2011. The safety management plan was presented, reviewed, and approved by the Planning Commission. (The conditions are shown in italics with UTA's response shown in regular font.)

13) *A study comparing the performance of the installed lighting versus the Lighting & Photo Metrics Plan specifications shall be presented to the Planning Commission in a public meeting, duly noticed, within 60 days after the opening of the park-and-ride lot for use. The Planning Commission may at that time require modifications to the installed lighting and the Lighting & Photo Metrics Plan specifications in order to reduce light spillage and/or to achieve the crime prevention through environmental design (CPTED) goals.* **COMPLETED**

UTA prepared and presented a photo-metric study of installed lighting performance for the 114th South park-and-ride lot. This study was approved by the Sandy City Planning Commission on March 21, 2013.

20) *That a safety plan is presented to, reviewed and approved by the Planning Commission through a public hearing process no less than thirty days prior to the opening of the park-and-ride lot for use. The plan shall include, but not be limited to, the following:*

a) *Provision for UTA to provide police patrols by sworn officers a minimum of 4 times per day. For the purposes of this condition, the presence of bus operators, maintenance workers or other UTA employees at the park-and-ride lot, while of value, does not satisfy the intent of the condition.*

ONGOING

UTA Police Department (UTA PD) has provided on average 4 daily random patrols of the 114th South park-and-ride lot since the opening of the Draper extension. These patrols are performed by sworn officers from the UTA PD and during UTA's 20-hour operations schedule.

b) *Provision for prior notification and coordination of such patrols with Sandy City Police Department.* **ONGOING**

UTA PD provides coordination concerning the patrols of the 114th South park-and-ride lot but UTA PD is not able to give detailed scheduling or prior notification of daily patrol routines.

c) *Provision for crime statistics generated by UTA police on crimes committed in the park-and-ride lot is forwarded to Sandy City Police Department on a monthly basis, in a format acceptable to Sandy City Police Department.* **ONGOING**

UTA PD reports crime statistics for the 114th park-and-ride lot to the SCPD on a monthly basis. This report is presented to the SCPD in MS Excel and/or PDF format.

d) *Provision for an increase in police patrols by UTA based on a 3-month rolling average of crimes occurring at the park-and-ride lot combined with SCPD reported crimes within 0.5 miles of the park-and-ride lot. By way of example, if the crime rate were to increase 15 percent over the baseline, UTA would add an additional daily patrol to their schedule.*

*The Safety Plan had one modification in Section 13.d where the trigger to increase daily UTAPD officer patrols was raised from 15% to 20% for a 3-month rolling average. This was due to the 15% rolling average calculation being exceeded twice previously to the opening of the Draper TRAX extension. Updated graphs are included in this report. **ONGOING***

As noted previously, on two occurrences in Year 2 and 3 of TRAX operations the rolling average approached 30% but that was due to the preceding 3 months of very low incidents (shown in yellow) with a following month of a higher number of incidents (shown in green). So while it appeared crime increased, in reality it is a statistical anomaly.

The 2014 through 2017 totals are tracking about 15 percent less than the 2011 to 2013 totals. In 2018 the total was 40% of pre-TRAX opening. The average incidents per month for 2011 to 2013 were approximately 27 and at an average of 22 per month since the opening of the Draper LRT Extension. AS crime appears to not be increasing, UTA PD will continue to evaluate increasing the patrol of the 114th park-and-ride lot from the minimum four daily patrols.

Since opening there have been an average of 4 patrols per day by sworn UTA Officers.

e) *The baseline for measuring any change in the crime rate shall be specified in the safety plan and agreed to by Sandy City Police Department and UTA police prior to submission of the safety plan to the Planning Commission. **ONGOING***

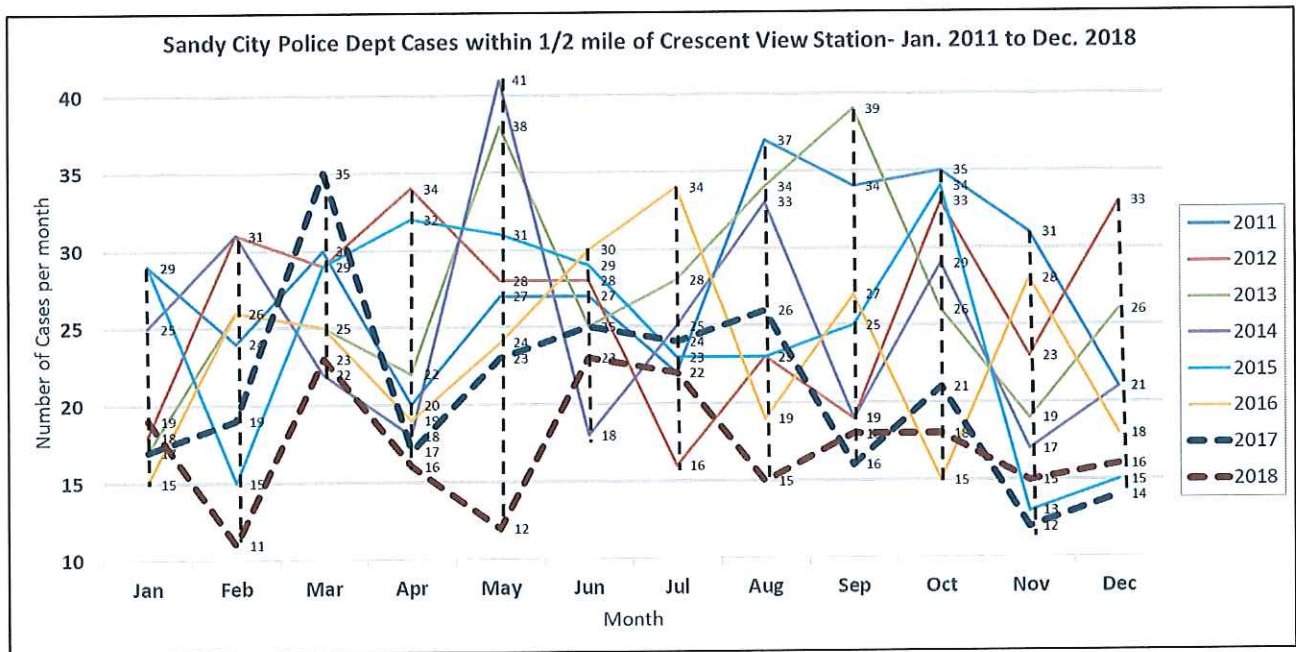
The baseline for measuring crime rates will be established in averaging statistics from the SCPD for incidents within 0.5 mile of the 114th park-and-ride lot and UTA PD incidents occurring at the 114th lot. The statistics are based on a 3-month rolling average.

SCPD provided the following information on all incidents occurring within 0.5 mile of the 114th park- and-ride lot.

**Sandy City Police Department Cases Within 1/2 Mile of 361 East 11400 South
January 1, 2011 - December 31, 2018**

Year	Jan	Feb	Mar	Apr	May	Jun	Jul	Aug	Sep	Oct	Nov	Dec	Total
2011	29	24	30	20	27	27	22	37	34	35	31	21	337
2012	18	31	29	34	28	28	16	23	19	33	23	33	315
2013	17	26	25	22	38	25	28	34	39	26	19	26	325
2014	25	31	22	18	41	18	25	33	19	29	17	21	299
2015	29	15	29	32	31	29	23	23	25	34	13	15	298
2016	15	26	25	19	24	30	34	19	27	15	28	18	280
2017	17	19	35	17	23	25	24	26	16	21	12	14	249
2018	19	11	23	16	12	23	22	15	18	18	15	16	208
Avg.	21	23	27	22	28	26	24	26	25	26	20	21	289

As shown in the table and chart below, crime reported by the SCPD decreased from a monthly average of 27 per month prior to the August 2013 opening of the Draper TRAX line to 22 following the opening. Of note are the lower number of incidents in 2017 and 2018 compared to prior years.



The chart above shows a trend in cases for 2011 to 2018. They typically start low in the winter, rising up through May, then drop suddenly in June, rising up again through September, and dropping again into November/December to start all over again. The trend since the opening of the Draper TRAX line is similar except that after peaking in May the cases remain fairly level through October and fall again into December.

Current UTA Transit Police Trends in Sandy Jurisdiction

UTA PD has also been providing information on all incidents occurring at the park-and-ride lots in the Sandy Jurisdiction. Please refer to the table below for violation totals for each lot during years prior to opening the Draper TRAX line and after. The increase at the 114th S station in 2016 and 2018 was primarily due to 29 and 27 incidents, respectively, of Public Order/ Public Peace incidents. Otherwise 2016 to 2018 totals were in line with 2015's total of 24.

It is interesting to note the number of incidents prior to the Draper TRAX line opening and after at the three original TRAX stations, 10000, 9400 and 9000 S. Prior to opening they averaged 63 from 2011 to 2013. After opening they have averaged 80 from 2014 to 2018, with the largest increase at 9000 S of over 100%. Not sure why this is occurring.

The 2014 to 2018 average for 11400 S is 33, without Public Order/Public Peace the average is only 23.

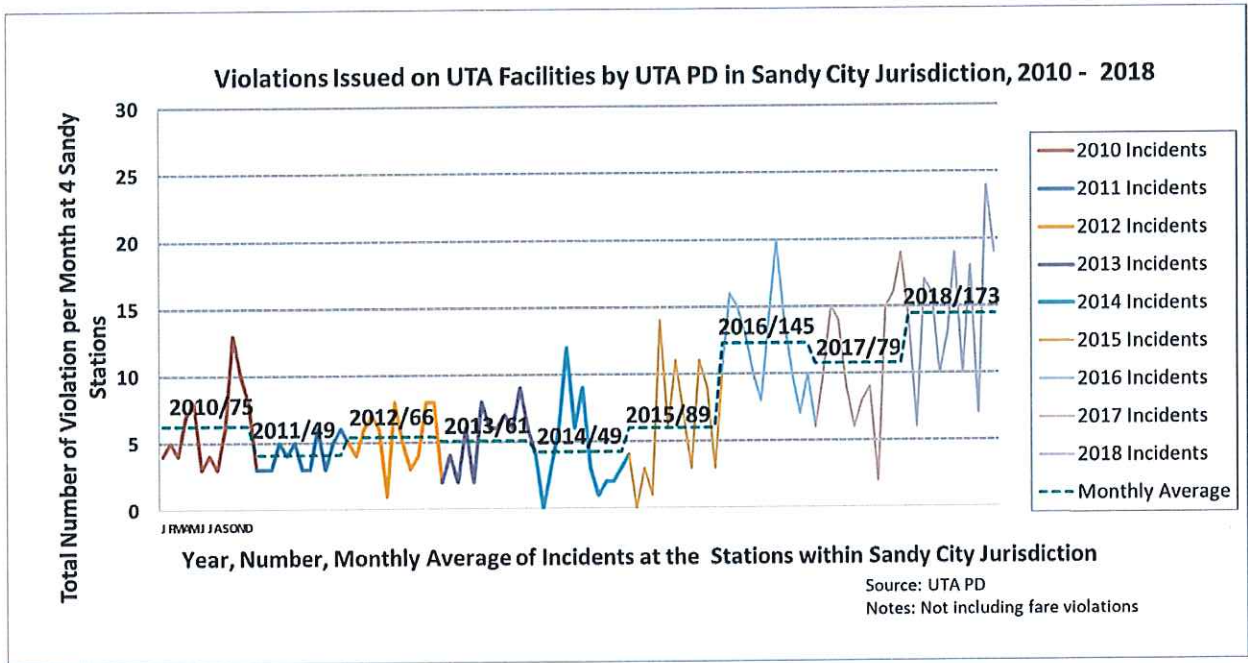
Also of note is that prior to opening, the 10000 and 9400 S stations averaged 36 incidents per year and after opening have averaged only 27 per year. So the demographics of the reported incidents is moving about the system.

Incidents Reported at Sandy Stations (Excluding Fare Enforcement Violations)						
Station	2018	Avg./Mo.	2017	Avg./Mo.	2016	Avg./Mo.
11400 S TRAX	53	4.4	29	2.4	49	4.1
10000 S TRAX:	30	2.5	12	1.0	3	0.3
9400 S TRAX:	20	1.7	19	1.6	19	1.6
9000 S TRAX:	70	5.8	69	5.8	74	6.2
Total	173	14.42	129	10.75	145	12.08

Station	2015	Avg./Mo.	2014	Avg./Mo.	2013	Avg./Mo.
11400 S TRAX	24	2.0	9	0.8	4	0.9
10000 S TRAX:	12	1.0	14	1.2	27	2.3
9400 S TRAX:	4	0.3	4	0.3	0	0.0
9000 S TRAX:	49	4.1	22	1.8	30	2.5
Total	89	7.42	49	4.08	61	5.64

Station	2012	Avg./Mo.	2011	Avg./Mo.	2010	Avg./Mo.
11400 S TRAX	n/a	n/a	n/a	n/a	n/a	n/a
10000 S TRAX:	36	3.0	31	2.6	46	3.8
9400 S TRAX:	0	0.0	3	0.3	3	0.3
9000 S TRAX:	30	2.5	15	1.3	26	2.2
Total	66	5.50	49	4.08	75	6.25

Below is a chart and the statistics for reported crime within Sandy City according to the UTA PD. The year and number of incidents responded to are shown. Since a low in 2013-2014 the incidents have increased primarily due to the issues at the 9000 S station from 22 in 2014 to 49 in 2015, 74 in 2016, 69 in 2017 and 70 in 2018. Overall incidents have been increasing since the low of 2014 primarily due to violations at 9000 S.



Establishing Community Outreach and Education

The community outreach and education plan below was implemented to address the concerns raised in item number 31 of the final conditions of approval set forth by the Sandy City Council in June of 2011.

31. That prior to opening of the 11400 South park-and-ride lot applicant shall jointly determine with the Canyons School District and other pertinent community organizations an ongoing safety, education and promotion program acceptable to the school district which shall be included in the safety plan. **COMPLETED**

Utah Transit Authority performed "Operation Lifesaver" to all area schools closest to the Draper TRAX extension rail corridor prior to opening the line during the 2012-2013 school year.

Operation Lifesaver presentations were delivered by UTA employee volunteers who have been trained and certified by the Utah Operation Lifesaver organization. It is an international, non-profit educational organization founded in 1972. Volunteer speakers and audio-visual aids are presented free of charge to groups that include schools, driver education classes, professional truck and bus drivers, emergency responders, law-enforcement, and other interested civic or professional groups. The curriculum includes segments on dangerous and safe behaviors, the ubiquity of trains, their stopping distances, cars on tracks, trespassing, emergency notification

systems, traffic and other applicable laws.

Operation Lifesaver reports its success can be measured by the reduction in the number of incidents since the program was started. In 1975, there were 12,000 incidents recorded; by 2008 there were 2,300.

The schools which received the "Operation Lifesaver presentation prior to opening included:

1. Crescent View Middle School, 11150 South 300 East, Sandy
2. Crescent Elementary School, 11100 South 230 East, Sandy
3. Sprucewood Elementary School, 12025 South 1000 East, Sandy
4. Draper Elementary School, 12080 East 12660 South, Draper
5. Skaggs Catholic Center, 300 East 11800 South, Draper
 - a. St. John the Baptist Elementary School
 - b. St. John the Baptist Middle School
 - c. Juan Diego Catholic High School

Additionally, UTA will continue to participate in community outreach events by sponsoring display booths and other educational efforts.

Ongoing Operation Life Saver presentations are conducted at public high schools as part of driver's education. If there are requests to have regular / annual presentations at schools, UTA and OLI can definitely add it to the schedule.

Below is a picture from just such a presentation up north last month.



Appendix A: Sandy City Stations and 114th South Park-and-Ride Crime Statistics

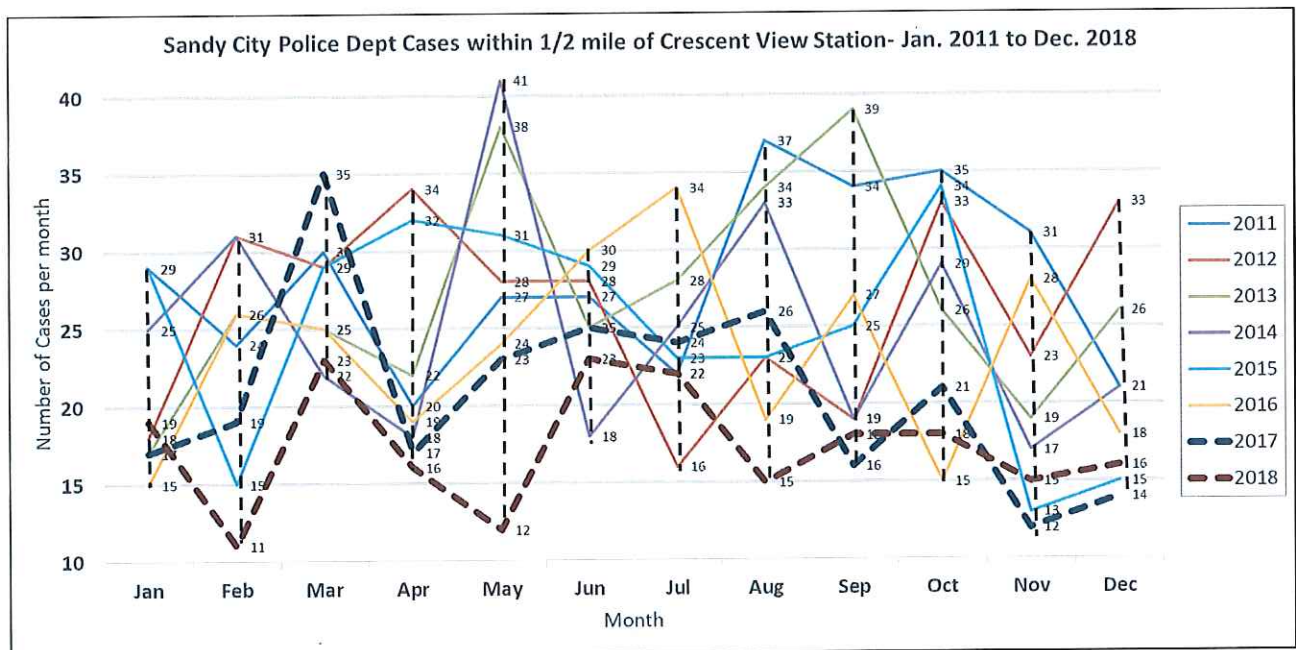
1. Crescent View Park and Ride Lot Parking Occupancy, September 2016 to September 2017 and 2018.
2. Sandy City Police Department Cases within 1/2 mile of the Crescent View Station- Jan. 2011 to 2018- provided by Sandy City.
3. Percentage Change of Crime within 0.5 Mile of the 114th Station- 3 Month Rolling Average 2011 to 2018- provided by Sandy City.
4. Violations issued on UTA facilities in Sandy City jurisdiction. 2010 to 2018- provided by UTA PD.
5. All non-fare violations issued by UTA PD. 2010 to 2018- provided by UTA PD.
6. Incidents Handled by UTA Police- 2018 to 2010 within Sandy Jurisdiction.
7. Violations issued within 0.5 mile radius of 114th South Park and Ride Lot. 2011 to 2018 provided by Sandy City.
8. Map of 0.5 mile radius from the 114th park-and-ride lot.
9. 114th South Park and Ride Lot Residential Permit-Only Parking Area Plan

1. Crescent View Park and Ride Lot Parking Occupancy, September 2016 to September 2017 and 2018.

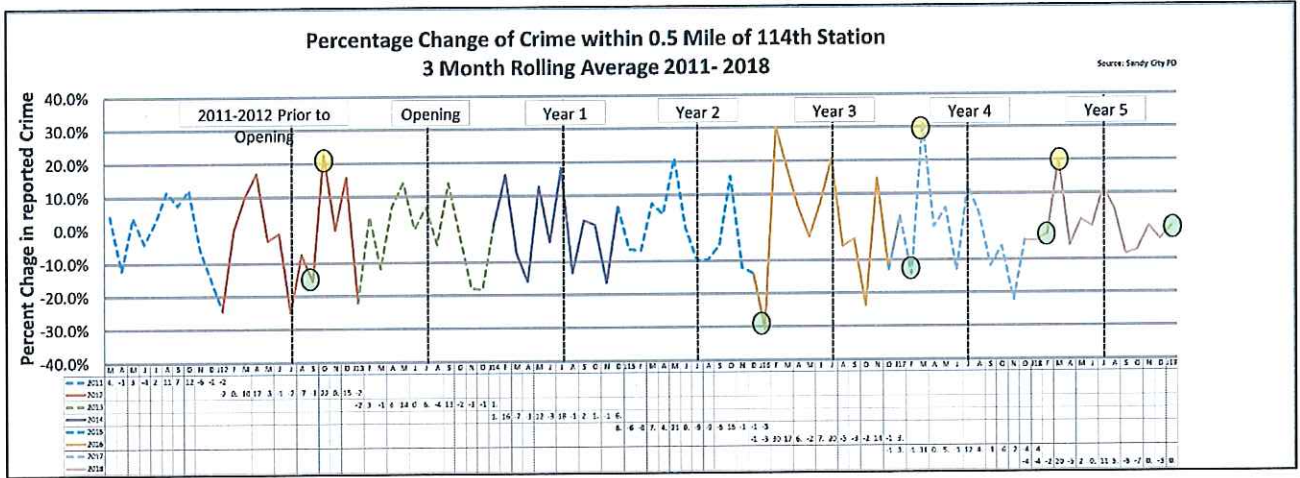
<u>Sept-2016- Sept 2017</u>	<u>Sun</u>	<u>Mon</u>	<u>Tue</u>	<u>Wed</u>	<u>Thu</u>	<u>Fri</u>	<u>Sat</u>
Crescent View Average of 248 Stalls occupied	12	161	169	162	167	125	25
Percent	5%	65%	68%	65%	68%	50%	10%
Max	39	229	209	192	210	144	89
Percent	16%	92%	84%	77%	85%	58%	36%
Min	2	94	128	107	134	85	5
Percent	1%	38%	52%	43%	54%	34%	2%

<u>Jan to Dec 2018</u>	<u>Sun</u>	<u>Mon</u>	<u>Tue</u>	<u>Wed</u>	<u>Thu</u>	<u>Fri</u>	<u>Sat</u>
Crescent View Average of 248 Stalls occupied	12	160	168	158	154	130	21
Percent	5%	64%	68%	64%	62%	52%	9%
Max	53	201	210	202	213	191	87
Percent	21%	81%	85%	81%	86%	77%	35%
Min	5	40	140	71	80	66	5
Percent	2%	16%	56%	29%	32%	27%	2%

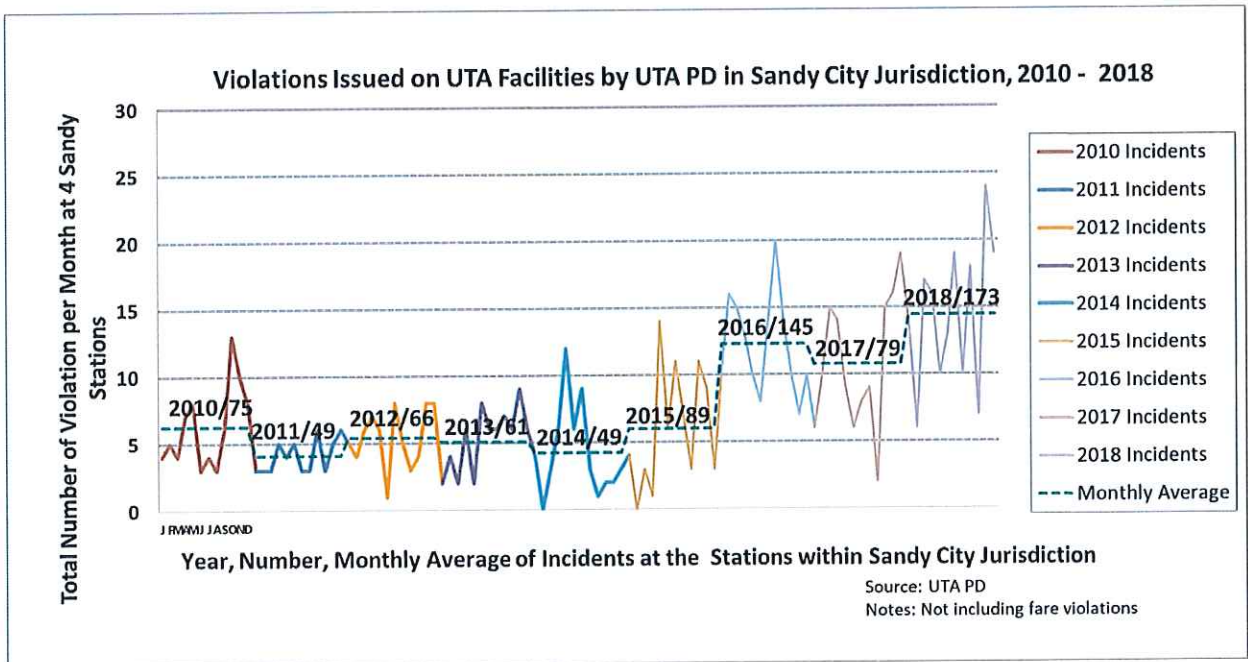
2. Sandy City Police Department Cases within 1/2 mile of the Crescent View Station- Jan. 2011 to 2018- provided by Sandy City.



3. Percentage Change of Crime within 0.5 Mile of the 114th Station- 3 Month Rolling Average 2011 to 2018- provided by Sandy City.



4. Violations issued on UTA facilities in Sandy City jurisdiction. 2010 to 2018- provided by UTA PD.



5. Violations issued on UTA facilities in Sandy City jurisdiction. 2010 to 2018- provided by UTA PD

Incidents Reported at Sandy Stations (Excluding Fare Enforcement Violations)						
Station	2018	Avg./Mo.	2017	Avg./Mo.	2016	Avg./Mo.
11400 S TRAX	53	4.4	29	2.4	49	4.1
10000 S TRAX:	30	2.5	12	1.0	3	0.3
9400 S TRAX:	20	1.7	19	1.6	19	1.6
9000 S TRAX:	70	5.8	69	5.8	74	6.2
Total	173	14.42	129	10.75	145	12.08

Station	2015	Avg./Mo.	2014	Avg./Mo.	2013	Avg./Mo.
11400 S TRAX	24	2.0	9	0.8	4	0.9
10000 S TRAX:	12	1.0	14	1.2	27	2.3
9400 S TRAX:	4	0.3	4	0.3	0	0.0
9000 S TRAX:	49	4.1	22	1.8	30	2.5
Total	89	7.42	49	4.08	61	5.64

Station	2012	Avg./Mo.	2011	Avg./Mo.	2010	Avg./Mo.
11400 S TRAX	n/a	n/a	n/a	n/a	n/a	n/a
10000 S TRAX:	36	3.0	31	2.6	46	3.8
9400 S TRAX:	0	0.0	3	0.3	3	0.3
9000 S TRAX:	30	2.5	15	1.3	26	2.2
Total	66	5.50	49	4.08	75	6.25

6. Incidents Handled by UTA Police- 2018 to 2010 within Sandy Jurisdiction
(See following pages)



**Incidents Handled by UTA Police Jan. to Dec. 2018
in the Jurisdiction of: Sandy City**

Date Reported	Time Reported	City of Occurrence	Classifications	Subclass	Address of Occurrence
1/11/2018 12:00:00	16:50	SANDY	THEFT	Of Bicycle/Bicycle Parts	115 E 9800 S
1/13/2018 12:00:00	19:50	SANDY	PUBLIC PEACE	Suspicious Person/Activity	165 E 9000 SOUTH
1/15/2018 12:00:00	12:03	SANDY	TRAFFIC	Traffic Accident - NonReportable	165 E 9000 SOUTH
1/16/2018 12:00:00	13:03	SANDY	Theft of Service	Fare Evasion/Fail to Purchase Fare	150 E 9400 SOUTH
1/18/2018 12:00:00	12:52	SANDY	TRAFFIC	Traffic Accident - NonReportable	361 E 11400 SOUTH
1/19/2018 12:00:00	09:55	SANDY	PUBLIC PEACE	Suspicious Person/Activity	165 E 9000 SOUTH
1/20/2018 12:00:00	16:45	SANDY	PUBLIC ORDER	Property Check - Residence/Business/V	361 E 11400 SOUTH
1/26/2018 12:00:00	13:50	SANDY	DAMAGED PROPERTY	UTA Property	115 E 9800 S
1/26/2018 12:00:00	05:26	SANDY	PUBLIC ORDER	Found/Abandoned Property	361 E 11400 SOUTH
1/3/2018 12:00:00 /	16:23	SANDY	PUBLIC ORDER	Public Intoxication	361 E 11400 SOUTH
1/3/2018 12:00:00 /	18:14	SANDY	PUBLIC PEACE	Suspicious Person/Activity	361 E 11400 SOUTH
1/3/2018 12:00:00 /	09:30	SANDY	THEFT	From Yards	115 E 9800 S
1/30/2018 12:00:00	10:02	SANDY	TRAFFIC	Abandoned Vehicle	361 E 11400 SOUTH
1/8/2018 12:00:00 /	14:00	SANDY	PUBLIC PEACE	Juvenile Problem	165 E 9000 SOUTH
1/9/2018 12:00:00 /	11:17	SANDY	DRUGS	Paraphernalia - Found/Surrendered	361 E 11400 SOUTH
2/10/2018 12:00:00	14:46	SANDY	PUBLIC ORDER	Ambulance/Medical	165 E 9000 SOUTH
2/2/2018 12:00:00 /	15:59	SANDY	PUBLIC PEACE	Suspicious Person/Activity	361 E 11400 SOUTH
2/27/2018 12:00:00	09:30	SANDY	DAMAGED PROPERTY	Graffiti	361 E 11400 SOUTH
2/4/2018 12:00:00 /	20:49	SANDY	PUBLIC ORDER	Ambulance/Medical	165 E 9000 SOUTH
2/5/2018 12:00:00 /	18:01	SANDY	PUBLIC PEACE	Suspicious Person/Activity	165 E 9000 SOUTH
2/8/2018 12:00:00 /	17:08	SANDY	DRUGS	Marijuana, Possession	165 E 9000 SOUTH
3/11/2018 12:00:00	05:44	SANDY	DAMAGED PROPERTY	Public Property	165 E 9000 SOUTH
3/11/2018 12:00:00	05:18	SANDY	DAMAGED PROPERTY	Public Property	361 E 11400 SOUTH
3/16/2018 12:00:00	22:08	SANDY	PUBLIC ORDER	Public Intoxication	165 E 9000 SOUTH
3/19/2018 12:00:00	17:29	SANDY	PUBLIC PEACE	Suspicious Person/Activity	165 E 9000 SOUTH
3/2/2018 12:00:00 /	00:27	SANDY	PUBLIC ORDER	Ambulance/Medical	115 E 9800 S
3/2/2018 12:00:00 /	07:21	SANDY	PUBLIC ORDER	Assist Citizen	361 E 11400 SOUTH
3/20/2018 12:00:00	09:04	SANDY	PUBLIC ORDER	Assist Other Agency	115 E 9800 S
3/20/2018 12:00:00	12:45	SANDY	PUBLIC ORDER	Found/Abandoned Property	361 E 11400 SOUTH
3/21/2018 12:00:00	14:14	SANDY	PUBLIC ORDER	Ambulance/Medical	115 E 9800 S
3/21/2018 12:00:00	20:34	SANDY	THEFT	Of Vehicle Parts/Accessories/Gas	361 E 11400 SOUTH
3/22/2018 12:00:00	14:33	SANDY	PUBLIC ORDER	Public Intoxication	150 E 9400 SOUTH
3/22/2018 12:00:00	16:58	SANDY	PUBLIC PEACE	Suspicious Person/Activity	165 E 9000 SOUTH
3/23/2018 12:00:00	14:11	SANDY	PUBLIC ORDER	Public Intoxication	165 E 9000 SOUTH
3/26/2018 12:00:00	07:02	SANDY	PUBLIC PEACE	Suspicious Person/Activity	115 E 9800 S
3/30/2018 12:00:00	12:09	SANDY	ANIMALS/CONSERVATIO	Stray Animal	165 E 9000 SOUTH
3/31/2018 12:00:00	14:17	SANDY	PUBLIC ORDER	Personal Security/Welfare Check	115 E 9800 S
3/31/2018 12:00:00	23:33	SANDY	PUBLIC ORDER	Assist Other Agency	150 E 9400 SOUTH
4/10/2018 12:00:00	14:59	SANDY	PUBLIC ORDER	Lost Property	165 E 9000 SOUTH
4/10/2018 12:00:00	18:47	SANDY	PUBLIC PEACE	Suspicious Person/Activity	165 E 9000 SOUTH
4/13/2018 12:00:00	08:54	SANDY	ORDINANCE VIOLATION	PARKING	361 E 11400 SOUTH
4/16/2018 12:00:00	18:28	SANDY	PUBLIC ORDER	Personal Security/Welfare Check	165 E 9000 SOUTH
4/16/2018 12:00:00	08:32	SANDY	PUBLIC PEACE	Suspicious Person/Activity	361 E 11400 SOUTH
4/18/2018 12:00:00	23:58	SANDY	PUBLIC ORDER	Ambulance/Medical	115 E 9800 S
4/20/2018 12:00:00	10:42	SANDY	PUBLIC ORDER	Ambulance/Medical	361 E 11400 SOUTH
4/23/2018 12:00:00	11:55	SANDY	PUBLIC ORDER	Ambulance/Medical	361 E 11400 SOUTH
4/24/2018 12:00:00	08:02	SANDY	Theft of Service	Fare Evasion/Fail to Purchase Fare	361 E 11400 SOUTH
4/26/2018 12:00:00	20:16	SANDY	PUBLIC ORDER	Found/Abandoned Bicycle	165 E 9000 SOUTH
4/28/2018 12:00:00	13:26	SANDY	PUBLIC ORDER	Fire - Accidental	361 E 11400 SOUTH
4/28/2018 12:00:00	16:06	SANDY	PUBLIC PEACE	Suspicious Person/Activity	165 E 9000 SOUTH
4/3/2018 12:00:00 /	07:50	SANDY	PUBLIC ORDER	Ambulance/Medical	165 E 9000 SOUTH
4/30/2018 12:00:00	16:56	SANDY	PUBLIC ORDER	Assist Citizen	165 E 9000 SOUTH
4/4/2018 12:00:00 /	10:44	SANDY	THEFT	Of Bicycle/Bicycle Parts	150 E 9400 SOUTH
4/7/2018 12:00:00 /	09:54	SANDY	PUBLIC PEACE	Suspicious Person/Activity	165 E 9000 SOUTH
4/9/2018 12:00:00 /	22:36	SANDY	PUBLIC PEACE	Disorderly Conduct	361 E 11400 SOUTH
5/2/2018 12:00:00 /	13:11	SANDY	DAMAGED PROPERTY	Motor Vehicle	165 E 9000 SOUTH
5/22/2018 12:00:00	05:32	SANDY	DAMAGED PROPERTY	Motor Vehicle	165 E 9000 SOUTH
5/27/2018 12:00:00	12:20	SANDY	DAMAGED PROPERTY	Graffiti	361 E 11400 SOUTH
5/29/2018 12:00:00	17:03	SANDY	DRUGS	Paraphernalia - Found/Surrendered	115 E 9800 S
5/29/2018 12:00:00	10:34	SANDY	Theft of Service	Fare Evasion/Fail to Purchase Fare	150 E 9400 SOUTH

6/23/2018 12:00:00	11:57	SANDY	TRAFFIC	Abandoned Vehicle	165 E 9000 SOUTH
6/27/2018 12:00:00	23:25	SANDY	THEFT	Of Bicycle/Bicycle Parts	165 E 9000 SOUTH
6/3/2018 12:00:00 /	10:09	SANDY	TRAFFIC	Abandoned Vehicle	361 E 11400 SOUTH
6/5/2018 12:00:00 /	09:31	SANDY	PUBLIC ORDER	Assist Citizen	361 E 11400 SOUTH
6/7/2018 12:00:00 /	10:23	SANDY	PUBLIC PEACE	Suspicious Person/Activity	165 E 9000 SOUTH
7/1/2018 12:00:00 /	09:58	SANDY	TRAFFIC	Abandoned Vehicle	115 E 9800 S
7/14/2018 12:00:00	07:48	SANDY	PUBLIC ORDER	Found/Abandoned Bicycle	165 E 9000 SOUTH
7/14/2018 12:00:00	12:36	SANDY	PUBLIC PEACE	Suspicious Person/Activity	361 E 11400 SOUTH
7/14/2018 12:00:00	08:08	SANDY	TRAFFIC	Abandoned Vehicle	115 E 9800 S
7/15/2018 12:00:00	09:56	SANDY	TRAFFIC	Abandoned Vehicle	165 E 9000 SOUTH
7/16/2018 12:00:00	18:54	SANDY	ASSAULT	Simple Assault	165 E 9000 SOUTH
7/16/2018 12:00:00	21:18	SANDY	DRUGS	Narcotic Equipment, Possession	361 E 11400 SOUTH
7/19/2018 12:00:00	05:06	SANDY	TRAFFIC	Abandoned Vehicle	361 E 11400 SOUTH
7/2/2018 12:00:00 /	23:14	SANDY	THEFT	Of Bicycle/Bicycle Parts	165 E 9000 SOUTH
7/21/2018 12:00:00	20:21	SANDY	OBSTRUCT POLICE	Give False Personal Information to Police	150 E 9400 SOUTH
7/22/2018 12:00:00	22:48	SANDY	PUBLIC PEACE	Suspicious Person/Activity	165 E 9000 SOUTH
7/23/2018 12:00:00	10:08	SANDY	DAMAGED PROPERTY	Motor Vehicle	165 E 9000 SOUTH
7/23/2018 12:00:00	07:12	SANDY	PUBLIC ORDER	Personal Security/Welfare Check	165 E 9000 SOUTH
7/23/2018 12:00:00	13:05	SANDY	PUBLIC ORDER	Assist UTA	361 E 11400 SOUTH
7/23/2018 12:00:00	08:43	SANDY	Theft of Service	Fare Evasion/Fail to Purchase Fare	115 E 9800 S
7/25/2018 12:00:00	21:56	SANDY	Theft of Service	Fare Evasion/Fail to Purchase Fare	165 E 9000 SOUTH
7/26/2018 12:00:00	11:27	SANDY	PUBLIC PEACE	Suspicious Person/Activity	165 E 9000 SOUTH
7/27/2018 12:00:00	15:58	SANDY	PUBLIC PEACE	Suspicious Person/Activity	165 E 9000 SOUTH
7/4/2018 12:00:00 /	08:10	SANDY	TRAFFIC	Abandoned Vehicle	361 E 11400 SOUTH
7/5/2018 12:00:00 /	12:12	SANDY	TRAFFIC	Abandoned Vehicle	115 E 9800 S
7/6/2018 12:00:00 /	12:10	SANDY	PUBLIC ORDER	Assist Citizen	165 E 9000 SOUTH
8/11/2018 12:00:00	13:15	SANDY	TRAFFIC	Abandoned Vehicle	165 E 9000 SOUTH
8/14/2018 12:00:00	16:08	SANDY	THEFT	Of Bicycle/Bicycle Parts	165 E 9000 SOUTH
8/15/2018 12:00:00	08:19	SANDY	Theft of Service	Fare Evasion/Fail to Purchase Fare	150 E 9400 SOUTH
8/16/2018 12:00:00	18:28	SANDY	PUBLIC PEACE	Disorderly Conduct	165 E 9000 SOUTH
8/18/2018 12:00:00	22:52	SANDY	DRUGS	Drugs - Found/Surrendered	115 E 9800 S
8/2/2018 12:00:00 /	18:06	SANDY	Theft of Service	Fare Evasion/Fail to Purchase Fare	165 E 9000 SOUTH
8/21/2018 12:00:00	06:42	SANDY	PUBLIC PEACE	Suspicious Person/Activity	361 E 11400 SOUTH
8/22/2018 12:00:00	17:52	SANDY	PUBLIC ORDER	Assist UTA	361 E 11400 SOUTH
8/22/2018 12:00:00	09:56	SANDY	TRAFFIC	Traffic Accident - NonReportable	165 E 9000 SOUTH
8/24/2018 12:00:00	10:05	SANDY	DAMAGED PROPERTY	Graffiti	150 E 9400 SOUTH
8/31/2018 12:00:00	09:37	SANDY	PUBLIC PEACE	Suspicious Person/Activity	165 E 9000 SOUTH
8/8/2018 12:00:00 /	18:20	SANDY	PUBLIC PEACE	Suspicious Person/Activity	165 E 9000 SOUTH
9/10/2018 12:00:00	09:04	SANDY	PUBLIC ORDER	Assist Other Agency	361 E 11400 SOUTH
9/11/2018 12:00:00	14:07	SANDY	PUBLIC PEACE	Suspicious Person/Activity	115 E 9800 S
9/11/2018 12:00:00	05:34	SANDY	TRAFFIC	Abandoned Vehicle	165 E 9000 SOUTH
9/12/2018 12:00:00	20:29	SANDY	TRAFFIC	Abandoned Vehicle	361 E 11400 SOUTH
9/15/2018 12:00:00	09:29	SANDY	DAMAGED PROPERTY	Graffiti	165 E 9000 SOUTH
9/16/2018 12:00:00	13:36	SANDY	DAMAGED PROPERTY	UTA Property	165 E 9000 SOUTH
9/17/2018 12:00:00	21:52	SANDY	DRUGS	Hallucinogen, Possession	361 E 11400 SOUTH
9/18/2018 12:00:00	17:33	SANDY	Theft of Service	Fare Evasion/Fail to Purchase Fare	115 E 9800 S
9/20/2018 12:00:00	14:20	SANDY	PUBLIC ORDER	Personal Security/Welfare Check	150 E 9400 SOUTH
9/21/2018 12:00:00	12:28	SANDY	PUBLIC ORDER	Assist UTA	150 E 9400 SOUTH
9/21/2018 12:00:00	16:48	SANDY	TRAFFIC	Abandoned Vehicle	165 E 9000 SOUTH
9/23/2018 12:00:00	10:00	SANDY	PUBLIC ORDER	Public Intoxication	165 E 9000 SOUTH
9/26/2018 12:00:00	13:19	SANDY	Theft of Service	Fare Evasion/Fail to Purchase Fare	165 E 9000 SOUTH
9/27/2018 12:00:00	21:45	SANDY	PUBLIC ORDER	Assist Citizen	115 E 9800 S
9/27/2018 12:00:00	18:32	SANDY	THEFT	Of Bicycle/Bicycle Parts	165 E 9000 SOUTH
9/28/2018 12:00:00	06:29	SANDY	PUBLIC ORDER	Personal Security/Welfare Check	361 E 11400 SOUTH
9/28/2018 12:00:00	17:37	SANDY	PUBLIC ORDER	Fire - Undetermined	361 E 11400 SOUTH
9/3/2018 12:00:00 /	11:59	SANDY	Theft of Service	Fare Evasion/Fail to Purchase Fare	115 E 9800 S
9/30/2018 12:00:00	06:48	SANDY	DRUGS	Synthetic Narcotic, Possession	115 E 9800 S
9/30/2018 12:00:00	10:13	SANDY	THEFT	Of Lost or Mislaid Property	361 E 11400 SOUTH
9/9/2018 12:00:00 /	05:32	SANDY	DAMAGED PROPERTY	Private Property	165 E 9000 SOUTH
10/12/2018 12:00:0	13:31	SANDY	STOLEN VEHICLE	Recovered for Other Agency	361 E 11400 SOUTH
10/14/2018 12:00:0	12:10	SANDY	DAMAGED PROPERTY	Graffiti	115 E 9800 S
10/15/2018 12:00:0	12:10	SANDY	TRESPASS/PRIVACY	Trespassing	150 E 9400 SOUTH

10/15/2018 12:00:0	12:10	SANDY	TRESPASS/PRIVACY	Trespassing	150 E 9400 SOUTH
10/18/2018 12:00:0	03:25	SANDY	DAMAGED PROPERTY	UTA Property	165 E 9000 SOUTH
10/22/2018 12:00:0	16:32	SANDY	TRAFFIC	Traffic Accident - NonReportable	150 E 9400 SOUTH
10/26/2018 12:00:0	06:50	SANDY	TRAFFIC	Traffic Accident - NonReportable	150 E 9400 SOUTH
10/28/2018 12:00:0	09:01	SANDY	PUBLIC PEACE	Suspicious Person/Activity	361 E 11400 SOUTH
10/7/2018 12:00:00	19:25	SANDY	Theft of Service	Fare Evasion/Fail to Purchase Fare	165 E 9000 SOUTH
11/12/2018 12:00:0	06:04	SANDY	PUBLIC ORDER	Assist UTA	165 E 9000 SOUTH
11/12/2018 12:00:0	12:16	SANDY	TRAFFIC	Abandoned Vehicle	361 E 11400 SOUTH
11/13/2018 12:00:0	14:00	SANDY	PUBLIC PEACE	Juvenile Problem	150 E 9400 SOUTH
11/17/2018 12:00:0	05:43	SANDY	DAMAGED PROPERTY	UTA Property	165 E 9000 SOUTH
11/17/2018 12:00:0	06:47	SANDY	TRAFFIC	Abandoned Vehicle	165 E 9000 SOUTH
11/17/2018 12:00:0	21:27	SANDY	TRAFFIC	Abandoned Vehicle	361 E 11400 SOUTH
11/2/2018 12:00:00	20:20	SANDY	ASSAULT	Simple Assault	115 E 9800 S
11/2/2018 12:00:00	05:15	SANDY	DAMAGED PROPERTY	UTA Property	165 E 9000 SOUTH
11/2/2018 12:00:00	14:21	SANDY	PUBLIC ORDER	Assist UTA	150 E 9400 SOUTH
11/21/2018 12:00:0	08:09	SANDY	DAMAGED PROPERTY	UTA Property	150 E 9400 SOUTH
11/21/2018 12:00:0	11:40	SANDY	DAMAGED PROPERTY	Graffiti	165 E 9000 SOUTH
11/21/2018 12:00:0	14:00	SANDY	PUBLIC ORDER	Assist UTA	150 E 9400 SOUTH
11/21/2018 12:00:0	15:53	SANDY	PUBLIC PEACE	Suspicious Person/Activity	165 E 9000 SOUTH
11/26/2018 12:00:0	12:47	SANDY	PUBLIC ORDER	Assist UTA	165 E 9000 SOUTH
11/28/2018 12:00:0	17:13	SANDY	THEFT	Of Lost or Mislaid Property	361 E 11400 SOUTH
11/5/2018 12:00:00	18:38	SANDY	PUBLIC ORDER	Ambulance/Medical	361 E 11400 SOUTH
11/6/2018 12:00:00	10:52	SANDY	ORDINANCE VIOLATION	PARKING	115 E 9800 S
11/6/2018 12:00:00	13:51	SANDY	PUBLIC ORDER	Assist UTA	165 E 9000 SOUTH
11/6/2018 12:00:00	13:51	SANDY	PUBLIC PEACE	Juvenile Problem	115 E 9800 S
11/6/2018 12:00:00	13:49	SANDY	TRAFFIC	Traffic Accident - NonReportable	361 E 11400 SOUTH
11/6/2018 12:00:00	14:53	SANDY	TRESPASS/PRIVACY	Trespassing	150 E 9400 SOUTH
11/8/2018 12:00:00	01:24	SANDY	PUBLIC ORDER	Assist UTA	150 E 9400 SOUTH
11/8/2018 12:00:00	17:08	SANDY	PUBLIC ORDER	Lost Property	165 E 9000 SOUTH
11/9/2018 12:00:00	17:12	SANDY	PUBLIC ORDER	Assist Citizen	361 E 11400 SOUTH
12/1/2018 12:00:00	09:40	SANDY	Theft of Service	Fare Evasion/Fail to Purchase Fare	150 E 9400 SOUTH
12/10/2018 12:00:0	14:15	SANDY	PUBLIC ORDER	Assist UTA	115 E 9800 S
12/11/2018 12:00:0	19:36	SANDY	DRUGS	Amphetamine, Possession	165 E 9000 SOUTH
12/11/2018 12:00:0	08:42	SANDY	Theft of Service	Fare Evasion/Fail to Purchase Fare	150 E 9400 SOUTH
12/11/2018 12:00:0	10:15	SANDY	THEFT	From Vehicle	165 E 9000 SOUTH
12/11/2018 12:00:0	05:04	SANDY	TRAFFIC	Abandoned Vehicle	361 E 11400 SOUTH
12/12/2018 12:00:0	10:30	SANDY	PUBLIC PEACE	Suspicious Person/Activity	165 E 9000 SOUTH
12/13/2018 12:00:0	20:00	SANDY	PUBLIC ORDER	Assist Other Agency	361 E 11400 SOUTH
12/13/2018 12:00:0	18:04	SANDY	THEFT	Of Bicycle/Bicycle Parts	361 E 11400 SOUTH
12/14/2018 12:00:0	14:16	SANDY	PUBLIC PEACE	Juvenile Problem	150 E 9400 SOUTH
12/14/2018 12:00:0	19:29	SANDY	PUBLIC PEACE	Suspicious Person/Activity	150 E 9400 SOUTH
12/18/2018 12:00:0	10:51	SANDY	PUBLIC ORDER	Assist Other Agency	165 E 9000 SOUTH
12/19/2018 12:00:0	16:30	SANDY	PUBLIC PEACE	Suspicious Person/Activity	150 E 9400 SOUTH
12/19/2018 12:00:0	09:23	SANDY	Theft of Service	Fare Evasion/Fail to Purchase Fare	165 E 9000 SOUTH
12/2/2018 12:00:00	09:10	SANDY	DAMAGED PROPERTY	Graffiti	361 E 11400 SOUTH
12/21/2018 12:00:0	18:22	SANDY	PUBLIC ORDER	Personal Security/Welfare Check	115 E 9800 S
12/27/2018 12:00:0	21:06	SANDY	PUBLIC ORDER	Found/Abandoned Property	165 E 9000 SOUTH
12/3/2018 12:00:00	21:40	SANDY	PUBLIC ORDER	Assist Other Agency	115 E 9800 S
12/3/2018 12:00:00	23:04	SANDY	TRAFFIC	Traffic Accident - NonReportable	115 E 9800 S
12/5/2018 12:00:00	07:43	SANDY	WARRANT/ESCAPE	In County/Other Agency	361 E 11400 SOUTH
12/6/2018 12:00:00	10:01	SANDY	PUBLIC ORDER	Assist Other Agency	115 E 9800 S
12/8/2018 12:00:00	11:37	SANDY	ORDINANCE VIOLATION	PARKING	115 E 9800 S

Total	187		
less	-14	Theft of Service	
less Others	0		
Net Total	173		

Sandy Sta. 2017	Classification From UTAPD	9000 S TRAX:	9400 S TRAX:	10000 S TRAX:	11400 S TRAX:
		165 E 9000 SOUTH	150 E 9400 SOUTH	115 E 9800 S	361 E 11400 SOUTH
1	ANIMALS/CONSERVATION	1	0	0	0
0	ARSON	0	0	0	0
3	ASSAULT	1	0	1	1
19	DAMAGED PROPERTY	11	2	2	4
8	DRUGS	2	0	3	3
0	FAMILY OFFENSE	0	0	0	0
1	OBSTRUCT POLICE	0	1	0	0
3	ORDINANCE VIOLATION	0	0	2	1
56	PUBLIC ORDER	20	7	10	19
35	PUBLIC PEACE	20	4	3	8
0	ROBBERY	0	0	0	0
1	STOLEN VEHICLE	0	0	0	1
15	THEFT	6	2	3	4
28	TRAFFIC	9	2	6	11
2	TRESPASS/PRIVACY	0	2	0	0
1	WARRANT/ESCAPE	0	0	0	1
173	Total	70	20	30	53
Year	11400 S Station Incidents less Fare Evasion				
2012	n/a	n/a			
2013	4	0.33	incidents per month		
2014	9	0.75	incidents per month		
2015	24	2.00	incidents per month		
2016	49	4.08	incidents per month		
2017	29	2.42	incidents per month		
2018	53	4.42	incidents per month		



**Incidents Handled by UTA Police Jan. to Dec. 2017
in the Jurisdiction of: Sandy City**

Date Reported	Time Reported	City of Occurrence	Classifications	Subclass	Address of Occurrence
1/11/2017 12:00:00	11:18	SANDY	PUBLIC ORDER	Found/Abandoned Property	165 E 9000 SOUTH
1/12/2017 12:00:00	06:05	SANDY	PUBLIC PEACE	Suspicious Person/Activity	361 E 11400 SOUTH
1/17/2017 12:00:00	18:39	SANDY	THEFT	From Vehicle	165 E 9000 SOUTH
1/19/2017 12:00:00	18:00	SANDY	ASSAULT	Simple Assault on Police Officer	361 E 11400 SOUTH
1/20/2017 12:00:00	21:07	SANDY	PUBLIC PEACE	Suspicious Person/Activity	165 E 9000 SOUTH
1/25/2017 12:00:00	14:44	SANDY	TRESPASS/PRIVACY	Trespassing	150 E 9400 SOUTH
2/13/2017 12:00:00	15:28	SANDY	TRAFFIC	Traffic Accident - NonReportable	165 E 9000 SOUTH
2/19/2017 12:00:00	10:42	SANDY	PUBLIC ORDER	Ambulance/Medical	165 E 9000 SOUTH
2/19/2017 12:00:00	16:26	SANDY	PUBLIC ORDER	Ambulance/Medical	165 E 9000 SOUTH
2/19/2017 12:00:00	16:26	SANDY	PUBLIC ORDER	Public Intoxication	165 E 9000 SOUTH
2/19/2017 12:00:00	16:26	SANDY	TRESPASS/PRIVACY	Trespassing	165 E 9000 SOUTH
2/2/2017 12:00:00	08:42	SANDY	THEFT	Of Lost or Mislaid Property	165 E 9000 SOUTH
2/24/2017 12:00:00	13:30	SANDY	DAMAGED PROPERTY	UTA Property	361 E 11400 SOUTH
2/26/2017 12:00:00	09:35	SANDY	TRAFFIC	Abandoned Vehicle	165 E 9000 SOUTH
2/26/2017 12:00:00	15:16	SANDY	TRAFFIC	Abandoned Vehicle	361 E 11400 SOUTH
2/4/2017 12:00:00	16:26	SANDY	PUBLIC ORDER	Personal Security/Welfare Check	165 E 9000 SOUTH
3/1/2017 12:00:00	16:21	SANDY	STOLEN VEHICLE	Vehicle Theft	361 E 11400 SOUTH
3/14/2017 12:00:00	21:44	SANDY	DAMAGED PROPERTY	Motor Vehicle	165 E 9000 SOUTH
3/14/2017 12:00:00	13:42	SANDY	DAMAGED PROPERTY	UTA Property	165 E 9000 SOUTH
3/2/2017 12:00:00	14:46	SANDY	PUBLIC PEACE	Juvenile Problem	150 E 9400 SOUTH
3/2/2017 12:00:00	14:46	SANDY	Theft of Service	Fare Evasion/Fail to Purchase Fare	150 E 9400 SOUTH
3/2/2017 12:00:00	14:46	SANDY	TRESPASS/PRIVACY	Trespassing	150 E 9400 SOUTH
3/2/2017 12:00:00	14:28	SANDY	PUBLIC PEACE	Juvenile Problem	165 E 9000 SOUTH
3/2/2017 12:00:00	09:15	SANDY	PUBLIC PEACE	Juvenile Problem	361 E 11400 SOUTH
3/2/2017 12:00:00	15:20	SANDY	PUBLIC PEACE	Juvenile Problem	361 E 11400 SOUTH
3/22/2017 12:00:00	08:54	SANDY	DRUGS	Drugs - Found/Surrendered	150 E 9400 SOUTH
3/28/2017 12:00:00	14:53	SANDY	DAMAGED PROPERTY	UTA Property	150 E 9400 SOUTH
3/28/2017 12:00:00	14:53	SANDY	PUBLIC PEACE	Juvenile Problem	150 E 9400 SOUTH
3/29/2017 12:00:00	14:48	SANDY	PUBLIC ORDER	Ambulance/Medical	165 E 9000 SOUTH
3/4/2017 12:00:00	08:12	SANDY	PUBLIC ORDER	Lost Property	361 E 11400 SOUTH
3/6/2017 12:00:00	17:42	SANDY	DAMAGED PROPERTY	Motor Vehicle	165 E 9000 SOUTH
3/9/2017 12:00:00	14:38	SANDY	DAMAGED PROPERTY	Motor Vehicle	165 E 9000 SOUTH
4/12/2017 12:00:00	19:29	SANDY	TRAFFIC	Traffic Accident - NonReportable	165 E 9000 SOUTH
4/17/2017 12:00:00	17:20	SANDY	DAMAGED PROPERTY	Motor Vehicle	165 E 9000 SOUTH
4/17/2017 12:00:00	20:46	SANDY	THEFT	Of Lost or Mislaid Property	165 E 9000 SOUTH
4/24/2017 12:00:00	15:03	SANDY	DAMAGED PROPERTY	UTA Property	165 E 9000 SOUTH
4/25/2017 12:00:00	14:12	SANDY	DAMAGED PROPERTY	Private Property	165 E 9000 SOUTH
4/26/2017 12:00:00	21:28	SANDY	THEFT	Of Bicycle/Bicycle Parts	361 E 11400 SOUTH
4/27/2017 12:00:00	07:07	SANDY	DAMAGED PROPERTY	Motor Vehicle	165 E 9000 SOUTH
4/27/2017 12:00:00	08:16	SANDY	PUBLIC ORDER	Lost Property	165 E 9000 SOUTH
4/3/2017 12:00:00	19:24	SANDY	DRUGS	Heroin, Possession	165 E 9000 SOUTH
4/3/2017 12:00:00	19:24	SANDY	DRUGS	Narcotic Equipment, Possession	165 E 9000 SOUTH
4/3/2017 12:00:00	16:48	SANDY	THEFT	Of Bicycle/Bicycle Parts	165 E 9000 SOUTH
4/3/2017 12:00:00	19:24	SANDY	Theft of Service	Fare Evasion/Fail to Purchase Fare	165 E 9000 SOUTH
4/3/2017 12:00:00	19:24	SANDY	WARRANT/ESCAPE	In County/Other Agency	165 E 9000 SOUTH
4/4/2017 12:00:00	21:06	SANDY	THEFT	From Vehicle	361 E 11400 SOUTH
4/7/2017 12:00:00	23:16	SANDY	ARSON	Miscellaneous Burning	361 E 11400 SOUTH
5/11/2017 12:00:00	09:28	SANDY	PUBLIC ORDER	Ambulance/Medical	165 E 9000 SOUTH
5/13/2017 12:00:00	18:47	SANDY	DRUGS	Drugs - Found/Surrendered	165 E 9000 SOUTH
5/13/2017 12:00:00	18:47	SANDY	DRUGS	Paraphernalia - Found/Surrendered	165 E 9000 SOUTH
5/13/2017 12:00:00	18:47	SANDY	PUBLIC ORDER	Personal Security/Welfare Check	165 E 9000 SOUTH
5/16/2017 12:00:00	08:18	SANDY	STOLEN VEHICLE	Vehicle Theft	115 E 9800 S
5/17/2017 12:00:00	08:03	SANDY	DAMAGED PROPERTY	Motor Vehicle	165 E 9000 SOUTH
5/29/2017 12:00:00	15:01	SANDY	PUBLIC ORDER	Ambulance/Medical	165 E 9000 SOUTH
5/3/2017 12:00:00	15:32	SANDY	PUBLIC PEACE	Suspicious Person/Activity	165 E 9000 SOUTH
5/4/2017 12:00:00	07:55	SANDY	TRAFFIC	Traffic Accident - NonReportable	150 E 9400 SOUTH

6/10/2017 12:00:00	21:31	SANDY	ASSAULT	Simple Assault	165 E 9000 SOUTH
6/10/2017 12:00:00	21:31	SANDY	FAMILY OFFENSE	Domestic - Criminal in Nature	165 E 9000 SOUTH
6/16/2017 12:00:00	06:40	SANDY	THEFT	Of Bicycle/Bicycle Parts	165 E 9000 SOUTH
6/26/2017 12:00:00	10:07	SANDY	PUBLIC ORDER	Ambulance/Medical	165 E 9000 SOUTH
6/26/2017 12:00:00	18:42	SANDY	PUBLIC ORDER	Assist Other Agency	165 E 9000 SOUTH
6/3/2017 12:00:00 /	09:33	SANDY	THEFT	Of Bicycle/Bicycle Parts	165 E 9000 SOUTH
7/12/2017 12:00:00	11:05	SANDY	THEFT	Of Bicycle/Bicycle Parts	165 E 9000 SOUTH
7/13/2017 12:00:00	23:04	SANDY	PUBLIC ORDER	Ambulance/Medical	150 E 9400 SOUTH
7/13/2017 12:00:00	23:04	SANDY	PUBLIC ORDER	Public Intoxication	150 E 9400 SOUTH
7/14/2017 12:00:00	10:09	SANDY	DAMAGED PROPERTY	Motor Vehicle	165 E 9000 SOUTH
7/14/2017 12:00:00	10:09	SANDY	THEFT	From Vehicle	165 E 9000 SOUTH
7/16/2017 12:00:00	11:28	SANDY	PUBLIC ORDER	Assist UTA	165 E 9000 SOUTH
7/18/2017 12:00:00	16:01	SANDY	TRAFFIC	Traffic Accident - NonReportable	150 E 9400 SOUTH
7/26/2017 12:00:00	23:38	SANDY	PUBLIC ORDER	Assist UTA	165 E 9000 SOUTH
8/12/2017 12:00:00	19:36	SANDY	ORDINANCE VIOLATION	PARKING	165 E 9000 SOUTH
8/22/2017 12:00:00	11:16	SANDY	PUBLIC ORDER	Personal Security/Welfare Check	165 E 9000 SOUTH
8/24/2017 12:00:00	18:32	SANDY	THEFT	Of Bicycle/Bicycle Parts	165 E 9000 SOUTH
8/25/2017 12:00:00	14:17	SANDY	PUBLIC PEACE	Suspicious Person/Activity	150 E 9400 SOUTH
8/3/2017 12:00:00 /	14:17	SANDY	PUBLIC ORDER	Ambulance/Medical	150 E 9400 SOUTH
8/5/2017 12:00:00 /	22:44	SANDY	ASSAULT	Simple Assault	150 E 9400 SOUTH
8/5/2017 12:00:00 /	19:35	SANDY	ASSAULT	Simple Assault	165 E 9000 SOUTH
8/5/2017 12:00:00 /	19:35	SANDY	FAMILY OFFENSE	Domestic - Criminal in Nature	165 E 9000 SOUTH
8/9/2017 12:00:00 /	17:54	SANDY	THEFT	Of Bicycle/Bicycle Parts	165 E 9000 SOUTH
9/15/2017 12:00:00	21:19	SANDY	DAMAGED PROPERTY	Motor Vehicle	165 E 9000 SOUTH
9/2/2017 12:00:00 /	14:59	SANDY	PUBLIC ORDER	Ambulance/Medical	150 E 9400 SOUTH
10/1/2017 12:00:00	17:06	SANDY	THEFT	Of Bicycle/Bicycle Parts	165 E 9000 SOUTH
10/13/2017 12:00:0	17:04	SANDY	THEFT	Of Lost or Mislaid Property	165 E 9000 SOUTH
10/17/2017 12:00:0	13:29	SANDY	TRAFFIC	Abandoned Vehicle	115 E 9800 S
10/18/2017 12:00:0	10:40	SANDY	PUBLIC PEACE	Suspicious Person/Activity	165 E 9000 SOUTH
10/21/2017 12:00:0	09:56	SANDY	PUBLIC PEACE	Suspicious Person/Activity	361 E 11400 SOUTH
10/23/2017 12:00:0	20:22	SANDY	THEFT	Of Bicycle/Bicycle Parts	361 E 11400 SOUTH
10/25/2017 12:00:0	10:18	SANDY	PUBLIC PEACE	Suspicious Person/Activity	165 E 9000 SOUTH
10/26/2017 12:00:0	15:30	SANDY	THEFT	From Vehicle	165 E 9000 SOUTH
10/27/2017 12:00:0	18:16	SANDY	Theft of Service	Fare Evasion/Fail to Purchase Fare	165 E 9000 SOUTH
10/28/2017 12:00:0	17:41	SANDY	DAMAGED PROPERTY	Private Property	361 E 11400 SOUTH
10/30/2017 12:00:0	17:36	SANDY	THEFT	From Vehicle	165 E 9000 SOUTH
10/30/2017 12:00:0	20:49	SANDY	THEFT	From Vehicle	165 E 9000 SOUTH
10/30/2017 12:00:0	10:22	SANDY	DAMAGED PROPERTY	UTA Property	361 E 11400 SOUTH
10/5/2017 12:00:00	22:53	SANDY	PUBLIC ORDER	Public Intoxication	115 E 9800 S
10/5/2017 12:00:00	12:48	SANDY	TRAFFIC	Abandoned Vehicle	361 E 11400 SOUTH
10/7/2017 12:00:00	00:38	SANDY	DRUGS	Amphetamine, Possession	361 E 11400 SOUTH
11/10/2017 12:00:0	09:35	SANDY	PUBLIC ORDER	Personal Security/Welfare Check	115 E 9800 S
11/11/2017 12:00:0	22:20	SANDY	DRUGS	Marijuana, Possession	361 E 11400 SOUTH
11/11/2017 12:00:0	08:07	SANDY	PUBLIC PEACE	Suspicious Person/Activity	361 E 11400 SOUTH
11/13/2017 12:00:0	08:38	SANDY	PUBLIC ORDER	Assist Other Agency	165 E 9000 SOUTH
11/13/2017 12:00:0	15:01	SANDY	PUBLIC PEACE	Mental Subject	165 E 9000 SOUTH
11/13/2017 12:00:0	12:36	SANDY	TRAFFIC	Abandoned Vehicle	361 E 11400 SOUTH
11/15/2017 12:00:0	08:29	SANDY	PUBLIC PEACE	Suspicious Person/Activity	165 E 9000 SOUTH
11/15/2017 12:00:0	10:40	SANDY	TRAFFIC	Abandoned Vehicle	361 E 11400 SOUTH
11/16/2017 12:00:0	18:58	SANDY	PUBLIC ORDER	Ambulance/Medical	115 E 9800 S
11/18/2017 12:00:0	09:41	SANDY	ROBBERY	Street - Firearm	165 E 9000 SOUTH
11/25/2017 12:00:0	22:26	SANDY	PUBLIC PEACE	Disorderly Conduct	115 E 9800 S
11/27/2017 12:00:0	11:56	SANDY	TRAFFIC	Traffic Accident - NonReportable	150 E 9400 SOUTH
11/29/2017 12:00:0	19:22	SANDY	PUBLIC ORDER	Public Intoxication	115 E 9800 S
11/30/2017 12:00:0	12:39	SANDY	Theft of Service	Fare Evasion/Fail to Purchase Fare	150 E 9400 SOUTH
11/7/2017 12:00:00	11:32	SANDY	THEFT	Of Lost or Mislaid Property	115 E 9800 S
11/8/2017 12:00:00	05:18	SANDY	PUBLIC ORDER	Personal Security/Welfare Check	361 E 11400 SOUTH
11/8/2017 12:00:00	04:58	SANDY	TRAFFIC	Abandoned Vehicle	361 E 11400 SOUTH
12/1/2017 12:00:00	22:59	SANDY	DAMAGED PROPERTY	Motor Vehicle	115 E 9800 S
12/10/2017 12:00:0	08:07	SANDY	PUBLIC ORDER	Assist Other Agency	165 E 9000 SOUTH

12/12/2017 12:00:0	13:46	SANDY	PUBLIC PEACE	Juvenile Problem		150 E 9400 SOUTH
12/13/2017 12:00:0	11:03	SANDY	PUBLIC ORDER	Assist Other Agency		115 E 9800 S
12/14/2017 12:00:0	00:15	SANDY	TRESPASS/PRIVACY	Trespassing		361 E 11400 SOUTH
12/15/2017 12:00:0	14:54	SANDY	PUBLIC PEACE	Juvenile Problem		150 E 9400 SOUTH
12/15/2017 12:00:0	14:37	SANDY	Theft of Service	Fare Evasion/Fail to Purchase Fare		150 E 9400 SOUTH
12/17/2017 12:00:0	08:38	SANDY	PUBLIC ORDER-other	Assist Other Agency		160 E 8530 SOUTH
12/19/2017 12:00:0	00:18	SANDY	PUBLIC ORDER	Found/Abandoned Property		361 E 11400 SOUTH
12/20/2017 12:00:0	14:20	SANDY	PUBLIC PEACE	Juvenile Problem		150 E 9400 SOUTH
12/20/2017 12:00:0	09:26	SANDY	TRAFFIC	Traffic Accident - NonReportable		165 E 9000 SOUTH
12/21/2017 12:00:0	11:32	SANDY	PUBLIC ORDER	Assist Citizen		115 E 9800 S
12/22/2017 12:00:0	12:02	SANDY	THEFT	Of Lost or Mislaid Property		361 E 11400 SOUTH
12/28/2017 12:00:0	12:52	SANDY	PUBLIC ORDER	Public Intoxication		165 E 9000 SOUTH
12/29/2017 12:00:0	10:31	SANDY	TRAFFIC	Abandoned Vehicle		115 E 9800 S
12/29/2017 12:00:0	10:03	SANDY	TRAFFIC	Abandoned Vehicle		165 E 9000 SOUTH
12/3/2017 12:00:00	08:59	SANDY	TRAFFIC	Abandoned Vehicle		361 E 11400 SOUTH
12/4/2017 12:00:00	10:57	SANDY	PUBLIC ORDER	Assist Citizen		165 E 9000 SOUTH
12/4/2017 12:00:00	15:57	SANDY	DAMAGED PROPERTY	UTA Property		361 E 11400 SOUTH
12/5/2017 12:00:00	14:24	SANDY	PUBLIC PEACE	Suspicious Person/Activity		361 E 11400 SOUTH
12/7/2017 12:00:00	14:26	SANDY	PUBLIC PEACE	Juvenile Problem		150 E 9400 SOUTH
Total	81					
less	-5		Theft of Service			
less Others	-1		PUBLIC ORDER-other			
Net Total	75					
			9000 S TRAX:	9400 S TRAX:	10000 S TRAX:	11400 S TRAX:
Sandy Sta. 2017	Classification From UTAPD	165 E 9000 SOUTH	150 E 9400 SOUTH	115 E 9800 S	361 E 11400 SOUTH	
1	ARSON	0	0	0	1	
4	ASSAULT	2	1	0	1	
17	DAMAGED PROPERTY	11	1	1	4	
7	DRUGS	4	1	0	2	
2	FAMILY OFFENSE	2	0	0	0	
1	ORDINANCE VIOLATION	1	0	0	0	
32	PUBLIC ORDER	19	4	6	3	
21	PUBLIC PEACE	7	7	1	6	
1	ROBBERY	1	0	0	0	
2	STOLEN VEHICLE	0	0	1	1	
20	THEFT	15	0	1	4	
16	TRAFFIC	5	3	2	6	
4	TRESPASS/PRIVACY	1	2	0	1	
1	WARRANT/ESCAPE	1	0	0	0	
129	Total	69	19	12	29	
Year	11400 S Station Incidents less Fare Evasion					
2012	n/a	n/a				
2013	4	0.33	incidents per month			
2014	9	0.75	incidents per month			
2015	24	2.00	incidents per month			
2016	49	4.08	incidents per month			
2017	29	2.42	incidents per month			

7.



**Incidents Handled by UTA Police in 2016
in the Jurisdiction of: Sandy City**

Date Reported	Time Reported	City of Occurrence	Classifications	Subclass	Address of Occurrence
1/2/2016 12:00:00 A	14:07	SANDY	THEFT	Of Bicycle/Bicycle Parts	361 E 11400 SOUTH
1/6/2016 12:00:00 A	19:28	SANDY	PROPERTY	Found Property	150 E 9400 SOUTH
1/18/2016 12:00:00	10:34	SANDY	THEFT	Other	361 E 11400 SOUTH
1/19/2016 12:00:00	08:58	SANDY	TRAFFIC	Traffic Accident - NonReportable	165 E 9000 SOUTH
1/19/2016 12:00:00	08:09	SANDY	WARRANT/ESCAPE	Warrant Service	150 E 9400 SOUTH
1/20/2016 12:00:00	16:26	SANDY	PUBLIC ORDER	Public Intoxication	165 E 9000 SOUTH
1/20/2016 12:00:00	21:08	SANDY	Theft of Service	Other Theft of Services	165 E 9000 SOUTH
1/20/2016 12:00:00	16:26	SANDY	TRESPASSING	Trespassing, Private Property	165 E 9000 SOUTH
1/20/2016 12:00:00	21:08	SANDY	TRESPASSING	Trespassing, Private Property	165 E 9000 SOUTH
1/27/2016 12:00:00	11:26	SANDY	DAMAGED PROPERTY	Other	165 E 9000 SOUTH
1/28/2016 12:00:00	14:53	SANDY	PUBLIC PEACE	Juvenile Problem	150 E 9400 SOUTH
1/29/2016 12:00:00	15:50	SANDY	PUBLIC ORDER	Public Intoxication	361 E 11400 SOUTH
2/1/2016 12:00:00 A	09:13	SANDY	Theft of Service	Other Theft of Services	165 E 9000 SOUTH
2/1/2016 12:00:00 A	09:13	SANDY	TRESPASSING	Trespassing, Private Property	165 E 9000 SOUTH
2/2/2016 12:00:00 A	07:20	SANDY	SECURITY CHECK	VEHICLE	165 E 9000 SOUTH
2/7/2016 12:00:00 A	09:10	SANDY	ORDINANCE VIOLATION	Ordinance Violation	361 E 11400 SOUTH
2/9/2016 12:00:00 A	14:11	SANDY	PROPERTY	Found Property	165 E 9000 SOUTH
2/16/2016 12:00:00	05:03	SANDY	VANDALISM	Vandalism	361 E 11400 SOUTH
2/17/2016 12:00:00	17:44	SANDY	Theft of Service	Other Theft of Services	361 E 11400 SOUTH
2/18/2016 12:00:00	07:18	SANDY	TRAFFIC	Traffic Accident - NonReportable	165 E 9000 SOUTH
2/20/2016 12:00:00	00:17	SANDY	STOLEN VEHICLE	Vehicle Theft	361 E 11400 SOUTH
2/22/2016 12:00:00	07:51	SANDY	DAMAGED PROPERTY	Motor Vehicle	165 E 9000 SOUTH
2/22/2016 12:00:00	20:29	SANDY	FRAUD	Illegal Use Credit/Debit/ATM Cards	150 E 9400 SOUTH
2/22/2016 12:00:00	21:39	SANDY	PUBLIC ORDER	Ambulance/Medical	165 E 9000 SOUTH
2/22/2016 12:00:00	19:28	SANDY	THEFT	Other	150 E 9400 SOUTH
2/22/2016 12:00:00	19:17	SANDY	TRESPASSING	Trespassing, Private Property	165 E 9000 SOUTH
2/23/2016 12:00:00	13:42	SANDY	DRUGS	Amphetamine, Possession	165 E 9000 SOUTH
2/23/2016 12:00:00	13:42	SANDY	DRUGS	Narcotic Equipment, Possession	165 E 9000 SOUTH
2/23/2016 12:00:00	13:42	SANDY	THEFT	Other	165 E 9000 SOUTH
2/23/2016 12:00:00	13:42	SANDY	TRESPASSING	Trespassing, Private Property	165 E 9000 SOUTH
2/25/2016 12:00:00	15:13	SANDY	VANDALISM	Vandalism	361 E 11400 SOUTH
2/29/2016 12:00:00	07:16	SANDY	THEFT	Other	361 E 11400 SOUTH
3/2/2016 12:00:00 A	18:21	SANDY	PUBLIC ORDER	Ambulance/Medical	361 E 11400 SOUTH
3/4/2016 12:00:00 A	09:08	SANDY	ORDINANCE VIOLATION	Ordinance Violation	165 E 9000 SOUTH
3/9/2016 12:00:00 A	07:53	SANDY	Theft of Service	Other Theft of Services	165 E 9000 SOUTH
3/9/2016 12:00:00 A	07:53	SANDY	TRESPASSING	Trespassing, Private Property	165 E 9000 SOUTH
3/11/2016 12:00:00	15:54	SANDY	PUBLIC ORDER	Public Intoxication	361 E 11400 SOUTH
3/12/2016 12:00:00	10:01	SANDY	PUBLIC PEACE	Suspicious Person/Activity	165 E 9000 SOUTH
3/12/2016 12:00:00	11:04	SANDY	Theft of Service	Other Theft of Services	165 E 9000 SOUTH
3/12/2016 12:00:00	11:04	SANDY	TRESPASSING	Trespassing, Private Property	165 E 9000 SOUTH
3/16/2016 12:00:00	21:38	SANDY	ASSAULT	Simple Assault	115 E SEGO LILY DR
3/18/2016 12:00:00	09:44	SANDY	PUBLIC PEACE	Juvenile Problem	361 E 11400 SOUTH
3/18/2016 12:00:00	09:47	SANDY	PUBLIC PEACE	Juvenile Problem	361 E 11400 SOUTH
3/23/2016 12:00:00	12:58	SANDY	Theft of Service	Other Theft of Services	361 E 11400 SOUTH
3/28/2016 12:00:00	08:49	SANDY	WARRANT/ESCAPE	In County/Other Agency	361 E 11400 SOUTH
4/4/2016 12:00:00 A	19:07	SANDY	PUBLIC PEACE	Suspicious Person/Activity	165 E 9000 SOUTH
4/7/2016 12:00:00 A	05:37	SANDY	DAMAGED PROPERTY	Motor Vehicle	165 E 9000 SOUTH
4/7/2016 12:00:00 A	07:43	SANDY	DAMAGED PROPERTY	Motor Vehicle	165 E 9000 SOUTH
4/7/2016 12:00:00 A	00:23	SANDY	PUBLIC ORDER	Ambulance/Medical	361 E 11400 SOUTH
4/8/2016 12:00:00 A	08:59	SANDY	TRESPASSING	Trespassing, Government Property	165 E 9000 SOUTH
4/8/2016 12:00:00 A	09:41	SANDY	TRESPASSING	Trespassing, Government Property	165 E 9000 SOUTH
4/10/2016 12:00:00	19:02	SANDY	PUBLIC ORDER	Personal Security/Welfare Check	361 E 11400 SOUTH
4/10/2016 12:00:00	06:52	SANDY	VANDALISM	Vandalism	165 E 9000 SOUTH
4/17/2016 12:00:00	21:34	SANDY	PUBLIC PEACE	Suspicious Person/Activity	150 E 9400 SOUTH
4/18/2016 12:00:00	07:44	SANDY	ASSAULT	Simple Assault on Police Officer	361 E 11400 SOUTH
4/19/2016 12:00:00	08:40	SANDY	DAMAGED PROPERTY	Private Property	150 E 9400 SOUTH
4/20/2016 12:00:00	10:37	SANDY	PUBLIC ORDER	Found/Abandoned Property	361 E 11400 SOUTH
4/21/2016 12:00:00	17:51	SANDY	DAMAGED PROPERTY	Motor Vehicle	361 E 11400 SOUTH
5/3/2016 12:00:00 A	20:41	SANDY	PUBLIC ORDER	Ambulance/Medical	165 E 9000 SOUTH
5/5/2016 12:00:00 A	17:10	SANDY	TRAFFIC	Hit & Run	165 E 9000 SOUTH
5/17/2016 12:00:00	16:11	SANDY	DAMAGED PROPERTY	Business	165 E 9000 SOUTH
5/20/2016 12:00:00	09:01	SANDY	PUBLIC ORDER	Ambulance/Medical	361 E 11400 SOUTH
5/23/2016 12:00:00	17:50	SANDY	STOLEN VEHICLE	Vehicle Theft	361 E 11400 SOUTH
5/24/2016 12:00:00	11:20	SANDY	THEFT	From Vehicle	165 E 9000 SOUTH
5/26/2016 12:00:00	15:20	SANDY	PUBLIC ORDER	Assist UTA	361 E 11400 SOUTH
5/28/2016 12:00:00	15:48	SANDY	FAMILY OFFENSE	Domestic - Disturbance/Verbal - NonCriminal	165 E 9000 SOUTH
5/31/2016 12:00:00	20:38	SANDY	PUBLIC ORDER	Personal Security/Welfare Check	150 E 9400 SOUTH
5/31/2016 12:00:00	20:38	SANDY	TRESPASSING	Trespassing, Private Property	150 E 9400 SOUTH

6/15/2016 12:00:00	22:43	SANDY	PUBLIC ORDER	Personal Security/Welfare Check	361 E 11400 SOUTH
6/18/2016 12:00:00	09:24	SANDY	DAMAGED PROPERTY	Motor Vehicle	165 E 9000 SOUTH
6/21/2016 12:00:00	17:09	SANDY	THEFT	Of Bicycle/Bicycle Parts	361 E 11400 SOUTH
6/26/2016 12:00:00	17:34	SANDY	PUBLIC ORDER	Ambulance/Medical	361 E 11400 SOUTH
6/28/2016 12:00:00	09:09	SANDY	THEFT	Fare Evasion/Fail to Purchase Fare	165 E 9000 SOUTH
6/28/2016 12:00:00	09:09	SANDY	TRESPASSING	Trespassing, Private Property	165 E 9000 SOUTH
6/28/2016 12:00:00	09:09	SANDY	WARRANT/ESCAPE	In County/Other Agency	165 E 9000 SOUTH
6/29/2016 12:00:00	09:07	SANDY	WARRANT/ESCAPE	In County/Other Agency	165 E 9000 SOUTH
7/6/2016 12:00:00 A	20:51	SANDY	PUBLIC ORDER	Civil Cases	165 E 9000 SOUTH
7/7/2016 12:00:00 A	07:39	SANDY	WARRANT/ESCAPE	In County/Other Agency	165 E 9000 SOUTH
7/8/2016 12:00:00 A	23:21	SANDY	PUBLIC ORDER	Fire - Accidental	361 E 11400 SOUTH
7/9/2016 12:00:00 A	10:24	SANDY	DAMAGED PROPERTY	UTA Property	165 E 9000 SOUTH
7/16/2016 12:00:00	05:19	SANDY	DAMAGED PROPERTY	Motor Vehicle	165 E 9000 SOUTH
7/16/2016 12:00:00	05:19	SANDY	THEFT	From Vehicle	165 E 9000 SOUTH
7/18/2016 12:00:00	06:05	SANDY	PUBLIC ORDER	Fire - Undetermined	361 E 11400 SOUTH
7/20/2016 12:00:00	15:00	SANDY	PUBLIC ORDER	Assist UTA	361 E 11400 SOUTH
7/24/2016 12:00:00	16:53	SANDY	TRAFFIC	Traffic Accident - Involving UTA Train	165 E 9000 SOUTH
7/27/2016 12:00:00	20:57	SANDY	OBSTRUCT POLICE	Give False Personal Information to Police	165 E 9000 SOUTH
7/27/2016 12:00:00	20:57	SANDY	Theft of Service	Other Theft of Services	165 E 9000 SOUTH
7/28/2016 12:00:00	16:30	SANDY	PUBLIC ORDER	Ambulance/Medical	150 E 9400 SOUTH
7/28/2016 12:00:00	16:30	SANDY	PUBLIC ORDER	Public Intoxication	150 E 9400 SOUTH
7/29/2016 12:00:00	00:23	SANDY	PUBLIC ORDER	Public Intoxication	150 E 9400 SOUTH
7/30/2016 12:00:00	22:01	SANDY	PUBLIC ORDER	Ambulance/Medical	165 E 9000 SOUTH
8/2/2016 12:00:00 A	13:25	SANDY	PUBLIC ORDER	Fire - Accidental	165 E 9000 SOUTH
8/3/2016 12:00:00 A	08:25	SANDY	ANIMALS/CONSERVATION	Stray Animal	165 E 9000 SOUTH
8/5/2016 12:00:00 A	17:32	SANDY	DAMAGED PROPERTY	Motor Vehicle	165 E 9000 SOUTH
8/7/2016 12:00:00 A	12:19	SANDY	PUBLIC PEACE	Mental Subject	165 E 9000 SOUTH
8/8/2016 12:00:00 A	23:06	SANDY	ASSAULT	Simple Assault	361 E 11400 SOUTH
8/9/2016 12:00:00 A	10:33	SANDY	DAMAGED PROPERTY	UTA Property	165 E 9000 SOUTH
8/9/2016 12:00:00 A	11:57	SANDY	PUBLIC ORDER	Fire - Undetermined	361 E 11400 SOUTH
8/10/2016 12:00:00	19:29	SANDY	THEFT	Of Bicycle/Bicycle Parts	165 E 9000 SOUTH
8/13/2016 12:00:00	23:18	SANDY	PUBLIC ORDER	Public Intoxication	165 E 9000 SOUTH
8/17/2016 12:00:00	07:31	SANDY	THEFT	Of Bicycle/Bicycle Parts	361 E 11400 SOUTH
8/19/2016 12:00:00	19:45	SANDY	DAMAGED PROPERTY	Motor Vehicle	165 E 9000 SOUTH
8/19/2016 12:00:00	20:35	SANDY	DAMAGED PROPERTY	Motor Vehicle	165 E 9000 SOUTH
8/20/2016 12:00:00	22:08	SANDY	PUBLIC ORDER	Lost Property	361 E 11400 SOUTH
8/20/2016 12:00:00	00:48	SANDY	THEFT	From Vehicle	165 E 9000 SOUTH
8/22/2016 12:00:00	18:28	SANDY	PUBLIC ORDER	Assist Citizen	150 E 9400 SOUTH
8/22/2016 12:00:00	09:59	SANDY	THEFT	Of Bicycle/Bicycle Parts	150 E 9400 SOUTH
8/23/2016 12:00:00	19:26	SANDY	Theft of Service	Other Theft of Services	115 E SEGO LILY DR
8/23/2016 12:00:00	19:26	SANDY	TRESPASSING	Trespassing, Private Property	115 E SEGO LILY DR
8/24/2016 12:00:00	16:30	SANDY	THEFT	Of Bicycle/Bicycle Parts	361 E 11400 SOUTH
8/27/2016 12:00:00	11:00	SANDY	PUBLIC ORDER	Fire - Other	361 E 11400 SOUTH
8/31/2016 12:00:00	12:39	SANDY	STOLEN VEHICLE	Vehicle Theft	361 E 11400 SOUTH
8/31/2016 12:00:00	21:16	SANDY	Theft of Service	Other Theft of Services	165 E 9000 SOUTH
9/1/2016 12:00:00 A	09:54	SANDY	PUBLIC ORDER	Personal Security/Welfare Check	165 E 9000 SOUTH
9/10/2016 12:00:00	14:29	SANDY	PUBLIC ORDER	Public Intoxication	361 E 11400 SOUTH
9/12/2016 12:00:00	20:54	SANDY	PUBLIC ORDER	Ambulance/Medical	361 E 11400 SOUTH
9/13/2016 12:00:00	08:37	SANDY	PUBLIC ORDER	Assist Other Agency	361 E 11400 SOUTH
9/16/2016 12:00:00	07:50	SANDY	PUBLIC ORDER	Assist Citizen	361 E 11400 SOUTH
9/17/2016 12:00:00	23:15	SANDY	PUBLIC ORDER	Ambulance/Medical	361 E 11400 SOUTH
9/19/2016 12:00:00	13:46	SANDY	WARRANT/ESCAPE	In County/Other Agency	361 E 11400 SOUTH
9/21/2016 12:00:00	21:42	SANDY	OBSTRUCT POLICE	Give False Personal Information to Police	165 E 9000 SOUTH
9/21/2016 12:00:00	21:27	SANDY	OBSTRUCT POLICE	Give False Personal Information to Police	165 E 9000 SOUTH
9/21/2016 12:00:00	21:27	SANDY	THEFT	Fare Evasion/Fail to Purchase Fare	165 E 9000 SOUTH
9/21/2016 12:00:00	20:57	SANDY	Theft of Service	Other Theft of Services	165 E 9000 SOUTH
9/21/2016 12:00:00	21:42	SANDY	Theft of Service	Other Theft of Services	165 E 9000 SOUTH
9/21/2016 12:00:00	20:57	SANDY	TRESPASSING	Trespassing, Private Property	165 E 9000 SOUTH
9/21/2016 12:00:00	21:27	SANDY	WARRANT/ESCAPE	In County/Other Agency	165 E 9000 SOUTH
9/22/2016 12:00:00	23:59	SANDY	DAMAGED PROPERTY	Motor Vehicle	165 E 9000 SOUTH
9/29/2016 12:00:00	20:07	SANDY	PUBLIC ORDER	Ambulance/Medical	361 E 11400 SOUTH
10/1/2016 12:00:00	09:40	SANDY	THEFT	From Vehicle	361 E 11400 SOUTH
10/7/2016 12:00:00	19:32	SANDY	PUBLIC PEACE	Suspicious Person/Activity	165 E 9000 SOUTH

10/9/2016 12:00:00	07:34	SANDY	THEFT	Of Bicycle/Bicycle Parts	165 E 9000 SOUTH	
10/13/2016 12:00:00	20:02	SANDY	PUBLIC PEACE	Other Harassment	361 E 11400 SOUTH	
10/17/2016 12:00:00	09:58	SANDY	PUBLIC ORDER	Assist Other Agency	165 E 9000 SOUTH	
10/17/2016 12:00:00	17:37	SANDY	PUBLIC ORDER	Personal Security/Welfare Check	165 E 9000 SOUTH	
10/19/2016 12:00:00	13:29	SANDY	PUBLIC ORDER	Public Intoxication	165 E 9000 SOUTH	
10/22/2016 12:00:00	21:30	SANDY	PUBLIC PEACE	Suspicious Person/Activity	150 E 9400 SOUTH	
10/28/2016 12:00:00	10:23	SANDY	DRUGS	Drugs - Found/Surrendered	115 E SEGO LILY DR	
10/28/2016 12:00:00	14:17	SANDY	PUBLIC ORDER	Fire - Undetermined	361 E 11400 SOUTH	
11/6/2016 12:00:00	18:24	SANDY	ROBBERY	Street - Other Weapon	150 E 9400 SOUTH	
11/7/2016 12:00:00	12:26	SANDY	TRAFFIC	Traffic Accident - Reportable	165 E 9000 SOUTH	
11/11/2016 12:00:00	17:42	SANDY	DAMAGED PROPERTY	Motor Vehicle	165 E 9000 SOUTH	
11/21/2016 12:00:00	11:26	SANDY	PUBLIC ORDER	Found/Abandoned Bicycle	361 E 11400 SOUTH	
11/22/2016 12:00:00	18:14	SANDY	DRUGS	Drugs - Found/Surrendered	165 E 9000 SOUTH	
11/28/2016 12:00:00	09:05	SANDY	DAMAGED PROPERTY	Motor Vehicle	165 E 9000 SOUTH	
11/29/2016 12:00:00	14:41	SANDY	TRAFFIC	Traffic Accident - NonReportable	150 E 9400 SOUTH	
12/6/2016 12:00:00	17:07	SANDY	WARRANT/ESCAPE	In County/Other Agency	361 E 11400 SOUTH	
12/7/2016 12:00:00	06:28	SANDY	PUBLIC ORDER	Assist Citizen	150 E 9400 SOUTH	
12/9/2016 12:00:00	09:19	SANDY	DRUGS	Paraphernalia - Found/Surrendered	361 E 11400 SOUTH	
12/12/2016 12:00:00	22:04	SANDY	PUBLIC ORDER	Ambulance/Medical	361 E 11400 SOUTH	
12/13/2016 12:00:00	08:28	SANDY	TRESPASSING	Trespassing, Private Property	150 E 9400 SOUTH	
12/14/2016 12:00:00	17:27	SANDY	DAMAGED PROPERTY	Motor Vehicle	165 E 9000 SOUTH	
12/16/2016 12:00:00	07:07	SANDY	PUBLIC PEACE	Suspicious Person/Activity	361 E 11400 SOUTH	
12/16/2016 12:00:00	15:07	SANDY	THEFT	Of Lost or Mislaid Property	165 E 9000 SOUTH	
12/18/2016 12:00:00	14:48	SANDY	PUBLIC PEACE	Suspicious Person/Activity	165 E 9000 SOUTH	
12/29/2016 12:00:00	14:40	SANDY	PUBLIC ORDER	Public Intoxication	165 E 9000 SOUTH	
Total	156					
less	-11		Theft of Service			
Net Total	145					
			9000 S TRAX	9400 S TRAX	10000 S TRAX	11400 S TRAX
Sandy Sta. 2016	Classifications	From UTAPD	165 E 9000 SOUTH	150 E 9400 SOUTH	115 E SEGO LILY DR	361 E 11400 SOUTH
1	ANIMALS/CONSERVATION		1	0	0	0
3	ASSAULT		0	0	1	2
18	DAMAGED PROPERTY		16	1	0	1
5	DRUGS		3	0	1	1
1	FAMILY OFFENSE		1	0	0	0
1	FRAUD		0	1	0	0
3	OBSTRUCT POLICE		3	0	0	0
2	ORDINANCE VIOLATION		1	0	0	1
2	PROPERTY		1	1	0	0
43	PUBLIC ORDER		12	6	0	25
12	PUBLIC PEACE		5	3	0	4
1	ROBBERY		0	1	0	0
1	SECURITY CHECK		1	0	0	0
3	STOLEN VEHICLE		0	0	0	3
18	THEFT		9	2	0	7
6	TRAFFIC		5	1	0	0
14	TRESPASSING		11	2	1	0
3	VANDALISM		1	0	0	2
8	WARRANT/ESCAPE		4	1	0	3
145	Total		74	19	3	49
						-25
2016 TOTALS:	LESS FARE ENFORCMENTS VIOLATIONS					24
11400 S TRAX	49		4.08 incidents per month			
10000 S TRAX	3		0.25 incidents per month			
9400 S TRAX	19		1.58 incidents per month			
9000 S TRAX	74		6.17 incidents per month			
Total	145		12.08 incidents per month			



**Incidents Handled by UTA Police in 2015
in the Jurisdiction of: Sandy City**



Date Reported	Time Reported	City of Occurrence	Classifications	Subclass	Address of Occurrence	
4/25/2015 12:00:00	12:22	SANDY	THEFT	From Vehicle	165 E 9000 SOUTH	
5/1/2015 12:00:00 A	08:44	SANDY	THEFT	Other	115 E SEGO LILY DRIVE	
5/1/2015 12:00:00 A	08:44	SANDY	TRESPASS/PRIVACY	Trespassing	115 E SEGO LILY DRIVE	
5/3/2015 12:00:00 A	21:13	SANDY	DAMAGED PROPERTY	Criminal Mischief	115 E SEGO LILY DRIVE	
5/6/2015 12:00:00 A	08:25	SANDY	THEFT	Other	115 E SEGO LILY DRIVE	
5/8/2015 12:00:00 A	08:25	SANDY	TRESPASSING	Trespassing, Government Property	115 E SEGO LILY DRIVE	
5/7/2015 12:00:00 A	09:15	SANDY	THEFT	From Vehicle	115 E SEGO LILY DRIVE	
5/8/2015 12:00:00 A	08:29	SANDY	PUBLIC ORDER	Assist Other Agency	150 E 9400 SOUTH	
5/23/2015 12:00:00	05:56	SANDY	BURGLARY	Other	165 E 9000 SOUTH	
5/23/2015 12:00:00	16:32	SANDY	BURGLARY	Other	165 E 9000 SOUTH	
5/23/2015 12:00:00	16:32	SANDY	DAMAGED PROPERTY	Criminal Mischief	165 E 9000 SOUTH	
5/23/2015 12:00:00	20:02	SANDY	PUBLIC ORDER	Personal Security/Welfare Check	165 E 9000 SOUTH	
5/23/2015 12:00:00	22:25	SANDY	PUBLIC ORDER	Public Intoxication	150 E 9400 SOUTH	
5/25/2015 12:00:00	05:15	SANDY	VANDALISM	Vandalism	115 E SEGO LILY DRIVE	
5/29/2015 12:00:00	15:22	SANDY	THEFT	Other	165 E 9000 SOUTH	
6/1/2015 12:00:00 A	11:23	SANDY	PUBLIC PEACE	Public Peace Other	165 E 9000 SOUTH	
6/5/2015 12:00:00 A	11:07	SANDY	PUBLIC PEACE	Suspicious Person/Activity	165 E 9000 SOUTH	
6/12/2015 12:00:00	22:12	SANDY	PUBLIC ORDER	Assist Other Agency	150 E 9400 SOUTH	
6/16/2015 12:00:00	20:24	SANDY	TRESPASSING	Trespassing, Private Property	165 E 9000 SOUTH	
6/17/2015 12:00:00	15:50	SANDY	THEFT	Of Bicycle/Bicycle Parts	165 E 9000 SOUTH	
6/22/2015 12:00:00	18:51	SANDY	BURGLARY	Other	165 E 9000 SOUTH	
7/3/2015 12:00:00 A	20:05	SANDY	DAMAGED PROPERTY	Criminal Mischief	165 E 9000 SOUTH	
7/5/2015 12:00:00 A	13:53	SANDY	THEFT	From Vehicle	165 E 9000 SOUTH	
7/16/2015 12:00:00	10:35	SANDY	THEFT	Of Bicycle/Bicycle Parts	165 E 9000 SOUTH	
7/19/2015 12:00:00	10:48	SANDY	PUBLIC PEACE	Suspicious Person/Activity	165 E 9000 SOUTH	
7/19/2015 12:00:00	10:22	SANDY	THEFT	From Vehicle	165 E 9000 SOUTH	
7/19/2015 12:00:00	11:53	SANDY	THEFT	Other	165 E 9000 SOUTH	
7/19/2015 12:00:00	11:53	SANDY	TRESPASS/PRIVACY	Trespassing	165 E 9000 SOUTH	
7/21/2015 12:00:00	11:17	SANDY	BURGLARY	Other	165 E 9000 SOUTH	
7/23/2015 12:00:00	17:23	SANDY	PUBLIC ORDER	Lost Property	115 E SEGO LILY DRIVE	
7/24/2015 12:00:00	17:43	SANDY	PUBLIC ORDER	Ambulance/Medical	115 E SEGO LILY DRIVE	
7/24/2015 12:00:00	17:43	SANDY	PUBLIC ORDER	Assist Other Agency	115 E SEGO LILY DRIVE	
8/4/2015 12:00:00 A	08:35	SANDY	PUBLIC PEACE	Disorderly Conduct	165 E 9000 SOUTH	
8/16/2015 12:00:00	10:01	SANDY	DAMAGED PROPERTY	Criminal Mischief	165 E 9000 SOUTH	
8/16/2015 12:00:00	10:01	SANDY	THEFT	From Vehicle	165 E 9000 SOUTH	
8/19/2015 12:00:00	17:39	SANDY	BURGLARY	Other	165 E 9000 SOUTH	
8/24/2015 12:00:00	15:01	SANDY	FAMILY OFFENSE	Other	165 E 9000 SOUTH	
8/25/2015 12:00:00	12:32	SANDY	PUBLIC ORDER	Assist Other Agency	165 E 9000 SOUTH	
8/31/2015 12:00:00	23:09	SANDY	PUBLIC PEACE	Suspicious Person/Activity	165 E 9000 SOUTH	
9/1/2015 12:00:00 A	18:01	SANDY	THEFT	Of Bicycle/Bicycle Parts	165 E 9000 SOUTH	
9/20/2015 12:00:00	18:04	SANDY	PUBLIC ORDER	Ambulance/Medical	115 E SEGO LILY DRIVE	
9/27/2015 12:00:00	20:58	SANDY	TRAFFIC	Hit & Run	165 E 9000 SOUTH	
10/6/2015 12:00:00	09:41	SANDY	TRAFFIC	Hit & Run	165 E 9000 SOUTH	
10/10/2015 12:00:00	18:55	SANDY	TRESPASS/PRIVACY	Trespassing	165 E 9000 SOUTH	
10/13/2015 12:00:00	16:36	SANDY	TRAFFIC	Hit & Run	165 E 9000 SOUTH	
10/14/2015 12:00:00	16:15	SANDY	THEFT	Other	165 E 9000 SOUTH	
10/20/2015 12:00:00	08:13	SANDY	PUBLIC ORDER	Lost Property	115 E SEGO LILY DRIVE	
10/20/2015 12:00:00	15:27	SANDY	PUBLIC PEACE	Disorderly Conduct	150 E 9400 SOUTH	
10/24/2015 12:00:00	12:19	SANDY	PUBLIC ORDER	Ambulance/Medical	165 E 9000 SOUTH	
10/31/2015 12:00:00	16:14	SANDY	BURGLARY	Other	165 E 9000 SOUTH	
10/31/2015 12:00:00	10:25	SANDY	DAMAGED PROPERTY	Business	165 E 9000 SOUTH	
10/31/2015 12:00:00	16:14	SANDY	THEFT	From Vehicle	165 E 9000 SOUTH	
10/31/2015 12:00:00	16:14	SANDY	TRESPASSING	Trespassing, Private Property	165 E 9000 SOUTH	
11/1/2015 12:00:00	09:24	SANDY	DAMAGED PROPERTY	Motor Vehicle	165 E 9000 SOUTH	
11/3/2015 12:00:00	06:14	SANDY	TRAFFIC	Traffic Accident - NonReportable	165 E 9000 SOUTH	
11/4/2015 12:00:00	09:44	SANDY	THEFT	Other	165 E 9000 SOUTH	
11/4/2015 12:00:00	09:44	SANDY	TRESPASSING	Trespassing, Private Property	165 E 9000 SOUTH	
11/9/2015 12:00:00	17:12	SANDY	THEFT	From Vehicle	165 E 9000 SOUTH	
11/11/2015 12:00:00	16:55	SANDY	PUBLIC PEACE	Suspicious Person/Activity	165 E 9000 SOUTH	
11/18/2015 12:00:00	23:19	SANDY	THEFT	From Vehicle	165 E 9000 SOUTH	
11/27/2015 12:00:00	10:27	SANDY	THEFT	From Vehicle	165 E 9000 SOUTH	
11/27/2015 12:00:00	10:27	SANDY	VANDALISM	Vandalism	165 E 9000 SOUTH	
12/5/2015 12:00:00	12:47	SANDY	TRAFFIC	Hit & Run	165 E 9000 SOUTH	
12/11/2015 12:00:00	21:51	SANDY	PUBLIC PEACE	Suspicious Person/Activity	165 E 9000 SOUTH	
12/29/2015 12:00:00	14:00	SANDY	DAMAGED PROPERTY	Private Property	165 E 9000 SOUTH	
Total	65					
less	0		Theft of Service			
Net Total	65					
plus	24		11400 S TRAX			
Grand Total	89					
			9000 S TRAX	9400 S TRAX	10000 S TRAX	11400 S TRAX
Sandy Sta. 2015	Classifications	From UTAPD	165 E 9000 SOUTH	150 E 9400 SOUTH	115 E SEGO LILY DRIVE	361 E 11400 S
6	BURGLARY		6	0	0	
7	DAMAGED PROPERTY		6	0	1	
1	FAMILY OFFENSE		1	0	0	
11	PUBLIC ORDER		3	3	5	
8	PUBLIC PEACE		7	1	0	
18	THEFT		15	0	3	
5	TRAFFIC		5	0	0	
3	TRESPASS/PRIVACY		2	0	1	
4	TRESPASSING		3	0	1	
2	VANDALISM		1	0	1	
65	Total		49	4	12	24
2015 TOTALS:	LESS FARE ENFORCEMENTS VIOLATIONS					
11400 S TRAX	24		2.00 incidents per month			
10000 S TRAX	12		1.00 incidents per month			
9400 S TRAX	4		0.33 incidents per month			
9000 S TRAX	49		4.08 incidents per month			
Total	89		7.42 incidents per month			



**Incidents Handled by UTA Police in 2014
in the Jurisdiction of: Sandy City**



Date	Case #	Location	Offense
1/2/2014	2014-000001	150 E 9400 S	Drive No Insurance
1/2/2014	2014-000002	165 E 9000 S	Intoxication
1/3/2014	2014-000019	361 E 11400 S	Vehicle Burglary
1/11/2014	2014-000118	165 E 9000 S	Theft Theft - Felony
3/13/2014	2014-001006	150 E 9400 S	Theft
3/25/2014	2014-001216	165 E 9000 S	Trespassing
3/27/2014	2014-001270	361 E 11400 S	Bicycle Theft
4/15/2014	2014-001623	165 E 9000 S	Tobacco Violation
4/19/2014	2014-001690	165 E 9000 S	Theft
4/24/2014	2014-001760	165 E 9000 S	Bicycle Theft
4/25/2014	2014-001846	361 E 11400 S	Bicycle Theft
4/28/2014	2014-001831	165 E 9000 S	Drugs Amphetamine - Possess
4/28/2014	2014-001823	165 E 9000 S	False Information to PO
5/2/2014	2014-001914	165 E 9000 S	Drugs Marijuana - Possess
5/6/2014	2014-001985	165 E 9000 S	Simple Assault
5/12/2014	2014-002130	165 E 9000 S	Disorderly Conduct
5/12/2014	2014-002119	361 E 11400 S	Drugs Marijuana - Possess
5/13/2014	2014-002139	165 E 9000 S	Intoxication
5/15/2014	2014-002192	115 E Sego Lily Dr	Trespassing
5/15/2014	2014-002193	150 E 9400 S	Trespassing
5/17/2014	2014-002215	115 E Sego Lily Dr	Trespassing
5/19/2014	2014-002240	165 E 9000 S	Vehicle Burglary
5/21/2014	2014-002272	361 E 11400 S	False Information to PO
5/27/2014	2014-002368	115 E Sego Lily Dr	Criminal Mischief - Misdemeanor
5/28/2014	2014-002395	165 E 9000 S	Vehicle Theft
6/3/2014	2014-002520	115 E Sego Lily Dr	Bicycle Theft
6/4/2014	2014-002520	165 E 9000 S	Bicycle Theft
6/9/2014	2014-002774	361 E 11400 S	Vehicle Burglary
6/12/2014	2014-002654	361 E 11400 S	Theft of Services
6/12/2014	2014-002656	361 E 11400 S	Theft of Services
6/16/2014	2014-002863	115 E Sego Lily Dr	Theft
6/16/2014	2014-002737	165 E 9000 S	Theft of Services
6/21/2014	2014-002814	115 E Sego Lily Dr	Trespassing
6/27/2014	2014-002920	165 E 9000 S	Theft of Services
6/27/2014	2014-002929	165 E 9000 S	Trespassing
7/7/2014	2014-003150	11390 S 460 E	Criminal Mischief - Misdemeanor
7/8/2014	2014-003093	115 E Sego Lily Dr	Trespassing
7/10/2014	2014-003144	115 E Sego Lily Dr	Criminal Mischief - Misdemeanor
7/16/2014	2014-003234	115 E Sego Lily Dr	Theft
7/18/2014	2014-003281	115 E Sego Lily Dr	Trespassing
7/22/2014	2014-003365	115 E Sego Lily Dr	Theft of Services
7/23/2014	2014-003382	165 E 9000 S	Drugs Abuse of a Psychotoxic Chemical
7/26/2014	2014-003427	361 E 11400 S	Bicycle Theft
7/27/2014	2014-003433	165 E 9000 S	Criminal Mischief - Misdemeanor
7/30/2014	2014-003499	165 E 9000 S	Vehicle Theft

8/5/2014	2014-003619	165 E 9000 S		Vehicle Theft		
8/10/2014	2014-003687	9201 S 500 W		Criminal Mischief - Graffiti		
8/20/2014	2014-003891	165 E 9000 S		Bicycle Theft		
9/15/2014	2014-004285	150 E 9400 S		Theft of Services		
9/22/2014	2014-004455	115 E Segoe Lily Dr		Bicycle Theft		
9/24/2014	2014-004420	165 E 9000 S		Theft of Services		
10/4/2014	2014-004629	150 E 9400 S		Theft of Services		
10/14/2014	2014-004823	165 E 9000 S		Vehicle Theft		
10/29/2014	2014-005135	115 E Segoe Lily Dr		Criminal Mischief - Graffiti		
11/7/2014	2014-005262	165 E 9000 S		Theft of Services		
11/7/2014	2014-005276	150 E 9400 S		Intoxication		
11/15/2014	2014-005443	361 E 11400 S		Theft of Services		
11/28/2014	2014-005670	361 E 11400 S		Theft	Theft of Lost, Mislaid, or Mistaken	
12/2/2014	2014-005719	361 E 11400 S		Theft	Theft of Lost, Mislaid, or Mistaken	
12/16/2014	2014-005957	115 E Segoe Lily Dr		Theft of Services		
12/17/2014	2014-005986	115 E Segoe Lily Dr		Vehicle Theft		
12/25/2014	2014-006105	115 E Segoe Lily Dr		Theft	Felony Theft	
Total	62					
less	-11			Theft of Services		
less	-2			other		
Net Total	49					
		9000 S TRAX:	9400 S TRAX:	10000 S TRAX:	11400 S TRAX:	
Sandy Sta. 2014	Classifications From UTAPD	165 E 9000 S	150 E 9400 S	115 E Segoe Lily	361 E 11400 S	Other
8	Bicycle Theft	3	0	2	3	
2	Criminal Mischief - Graffiti	0	0	1	0	1
4	Criminal Mischief - Misdemeanor	1	0	2	0	1
1	Disorderly Conduct	1	0	0	0	
1	Drive No Insurance	0	1	0	0	
4	Drugs	3	0	0	1	
2	False Information to PO	1	0	0	1	
3	Intoxication	2	1	0	0	
1	Simple Assault	1	0	0	0	
8	Theft	2	1	3	2	
1	Tobacco Violation	1	0	0	0	
8	Trespassing	2	1	5	0	
3	Vehicle Burglary	1	0	0	2	
5	Vehicle Theft	4	0	1	0	
51	Total	22	4	14	9	2
2014 TOTALS:	LESS FARE ENFORCMENTS VIOLATIONS					
11400 S TRAX:	9	0.75	incidents per month			
10000 S TRAX:	14	1.17	incidents per month			
9400 S TRAX:	4	0.33	incidents per month			
9000 S TRAX:	22	1.83	incidents per month			
Total	49	4.08	incidents per month			



**Incidents Handled by UTA Police in 2013
in the Jurisdiction of: Sandy City**

Date Reported	Case No.	City of Occurrence	Classifications	Subclass	Address of Occurrence
01/09/2013	2013-000067	SANDY	Theft of Service	Theft of Services	115 E Segó Lily Dr
01/09/2013	2013-000080	SANDY	Theft of Service	Theft of Services	165 E 9000 S
01/12/2013	2013-000104	SANDY	STOLEN VEHICLE	Recovered Stolen Vehicle	115 E Segó Lily Dr
01/16/2013	2013-000145	SANDY	Theft of Service	Theft of Services	115 E Segó Lily Dr
01/17/2013	2013-000165	SANDY	THEFT	Vehicle Theft	115 E Segó Lily Dr
01/22/2013	2013-000203	SANDY	Theft of Service	Theft of Services	115 E Segó Lily Dr
02/01/2013	2013-000319	SANDY	Theft of Service	Theft of Services	115 E Segó Lily Dr
02/01/2013	2013-000325	SANDY	Theft of Service	Theft of Services	115 E Segó Lily Dr
02/04/2013	2013-000353	SANDY	THEFT	Theft	115 E Segó Lily Dr
02/12/2013	2013-000450	SANDY	THEFT	Misdemeanor Theft	165 E 9000 S
02/12/2013	2013-000453	SANDY	TRESPASSING	Criminal Trespass	165 E 9000 S
02/13/2013	2013-000461	SANDY	Theft of Service	Theft of Services	115 E Segó Lily Dr
02/18/2013	2013-000522	SANDY	Theft of Service	Theft of Services	115 E Segó Lily Dr
02/18/2013	2013-000523	SANDY	TRESPASSING	Criminal Trespass	115 E Segó Lily Dr
03/01/2013	2013-000659	SANDY	TRESPASSING	Criminal Trespass	115 E Segó Lily Dr
03/22/2013	2013-000940	SANDY	TRESPASSING	Criminal Trespass	115 E Segó Lily Dr
03/26/2013	2013-000976	SANDY	Theft of Service	Theft of Services	115 E Segó Lily Dr
03/26/2013	2013-000973	SANDY	Theft of Service	Theft of Services	165 E 9000 S
04/01/2013	2013-001054	SANDY	TRESPASSING	Criminal Trespass	165 E 9000 S
04/03/2013	2013-001080	SANDY	TRESPASSING	Criminal Trespass	165 E 9000 S
04/13/2013	2013-001210	SANDY	PUBLIC ORDER	Intoxication	115 E Segó Lily Dr
04/23/2013	2013-001310	SANDY	TRESPASSING	Criminal Trespass	165 E 9000 S
04/25/2013	2013-001353	SANDY	THEFT	Theft	115 E Segó Lily Dr
04/25/2013	2013-001331	SANDY	BURGLARY	Vehicle Burglary	165 E 9000 S
05/13/2013	2013-001543	SANDY	Theft of Service	Theft of Services	115 E Segó Lily Dr
05/13/2013	2013-001542	SANDY	Theft of Service	Theft of Services	115 E Segó Lily Dr
05/15/2013	2013-001560	SANDY	WARRANT/ESCAPE	Warrant Service, Other Jur.	115 E Segó Lily Dr
05/21/2013	2013-001635	SANDY	Theft of Service	Theft of Services	165 E 9000 S
05/23/2013	2013-001668	SANDY	THEFT	Theft	115 E Segó Lily Dr
05/23/2013	2013-001666	SANDY	Theft of Service	Theft of Services	165 E 9000 S
06/08/2013	2013-001886	SANDY	PUBLIC ORDER	Intoxication	165 E 9000 S
06/10/2013	2013-001943	SANDY	PUBLIC ORDER	Lewdness/Public Urination/Sexual Battery	165 E 9000 S
06/12/2013	2013-001952	SANDY	THEFT	Theft	115 E Segó Lily Dr
06/17/2013	2013-002014	SANDY	WARRANT/ESCAPE	Warrant Service, Other Jur.	115 E Segó Lily Dr
06/17/2013	2013-002016	SANDY	DAMAGED PROPERTY	Criminal Mischief/Misdemeanor	165 E 9000 S
06/23/2013	2013-002100	SANDY	Theft of Service	Theft of Services	165 E 9000 S
06/24/2013	2013-002263	SANDY	THEFT	Bicycle theft	115 E Segó Lily Dr
06/24/2013	2013-002114	SANDY	THEFT	Bicycle Theft	165 E 9000 S
06/25/2013	2013-002119	SANDY	Theft of Service	Theft of Services	165 E 9000 S
06/27/2013	2013-002156	SANDY	BURGLARY	Vehicle Burglary	115 E Segó Lily Dr
07/09/2013	2013-002339	SANDY	PUBLIC ORDER	Alcohol Compliance	115 E Segó Lily Dr
07/17/2013	2013-002474	SANDY	THEFT	Theft	165 E 9000 S
07/19/2013	2013-002521	SANDY	THEFT	Bicycle theft	165 E 9000 S
07/24/2013	2013-002592	SANDY	WARRANT/ESCAPE	Warrant Service	165 E 9000 S
07/27/2013	2013-002635	SANDY	THEFT	Bicycle theft	115 E Segó Lily Dr
07/30/2013	2013-002687	SANDY	WARRANT/ESCAPE	Warrant Service	115 E Segó Lily Dr
08/14/2013	2013-002906	SANDY	BURGLARY	Vehicle Burglary	165 E 9000 S
08/15/2013	2013-002909	SANDY	Theft of Service	Theft of Service	165 E 9000 S
08/21/2013	2013-002997	SANDY	THEFT	Bicycle theft	115 E Segó Lily Dr
08/22/2013	2013-003016	SANDY	ASSAULT	Simple Assault	115 E Segó Lily Dr
08/29/2013	2013-003092	SANDY	THEFT	Bicycle theft	115 E Segó Lily Dr
08/30/2013	2013-003104	SANDY	DAMAGED PROPERTY	Criminal Mischief - Misdemeanor	8400 S. 160 E.
08/31/2013	2013-003105	SANDY	TRESPASSING	Trespassing	165 E 9000 S

09/10/2013	2013-003214	SANDY	TRESPASSING	Trespassing	115 E Segó Lily Dr
09/18/2013	2013-003312	SANDY	TRESPASSING	Trespassing	115 E Segó Lily Dr
09/18/2013	2013-003316	SANDY	PUBLIC ORDER	Intoxication	9400 S. 2000 E.
09/21/2013	2013-003342	SANDY	DAMAGED PROPERTY	Criminal Mischief - Graffiti	9649 S. 490 W.
09/22/2013	2013-003358	SANDY	WARRANT/ESCAPE	Warrant Service	165 E 9000 S
09/25/2013	2013-003410	SANDY	DAMAGED PROPERTY	Criminal Mischief - Misdemeanor	115 E Segó Lily Dr
09/26/2013	2013-003390	SANDY	DAMAGED PROPERTY	Criminal Mischief - Graffiti	361 E 11400 S
10/06/2013	2013-003492	SANDY	STOLEN VEHICLE	Recovered Stolen Vehicle	165 E 9000 S
10/06/2013	2013-003574	SANDY	THEFT	Bicycle Theft	165 E 9000 S
10/06/2013	2013-003496	SANDY	ASSAULT	Assault on a Peace Officer	361 E 11400 S
10/12/2013	2013-003555	SANDY	TRESPASSING	Trespassing	165 E 9000 S
10/19/2013	2013-003632	SANDY	DAMAGED PROPERTY	Criminal Mischief - Misdemeanor	165 E 9000 S
10/21/2013	2013-003646	SANDY	TRESPASSING	Criminal Trespass	165 E 9000 S
11/02/2013	2013-003829	SANDY	TRESPASSING	Criminal Trespass	115 E Segó Lily Dr
11/11/2013	2013-003955	SANDY	PUBLIC PEACE	Communication Abuse	115 E Segó Lily Dr
11/12/2013	2013-003968	SANDY	STOLEN VEHICLE	Recovered Stolen Vehicle	165 E 9000 S
11/15/2013	2013-004100	SANDY	ASSAULT	Sexual Battery	115 E Segó Lily Dr
11/15/2013	2013-004041	SANDY	TRESPASSING	Criminal Trespass	165 E 9000 S
11/15/2013	2013-004019	SANDY	WARRANT/ESCAPE	Warrant Service	361 E 11400 S
11/18/2013	2013-004063	SANDY	ASSAULT	Simple Assault	165 E 9000 S
11/18/2013	2013-004058	SANDY	TRESPASSING	Criminal Trespass	165 E 9000 S
11/18/2013	2013-004058	SANDY	TRESPASSING	Criminal Trespass	165 E 9000 S
12/03/2013	2013-004191	SANDY	THEFT	Vehicle Theft	165 E 9000 S
12/04/2013	2013-004207	SANDY	BURGLARY	Vehicle Burglary	115 E Segó Lily Dr
12/07/2013	2013-004236	SANDY	THEFT	Vehicle Theft	165 E 9000 S
12/10/2013	2013-004267	SANDY	TRAFFIC	Hit and Run	361 E 11400 S
12/26/2013	2013-004413	SANDY	PUBLIC ORDER	Intoxication	165 E 9000 S
12/31/2013	2013-004457	SANDY	TRESPASSING	Criminal Trespass	165 E 9000 S
Total	81				
less	-17		Theft of Service		
less	-3		Other		
Net Total	61				
			9000 S TRAX:	11400 S TRAX:	10000 S TRAX:
Sandy Sta. 2015	Classifications	From UTAPD	165 E 9000 S	361 E 11400 S	115 E Segó Lily Dr
4	ASSAULT		1	1	2
4	BURGLARY		2	0	2
6	DAMAGED PROPERTY		2	1	1
6	PUBLIC ORDER		3	0	2
1	PUBLIC PEACE		0	0	1
3	STOLEN VEHICLE		2	0	1
16	THEFT		7	0	9
1	TRAFFIC		0	1	0
17	TRESPASSING		11	0	6
6	WARRANT/ESCAPE		2	1	3
64	Total		30	4	27
2013 TOTALS:	LESS FARE ENFORCMENTS VIOLATIONS				
11400 S TRAX:	4	0.89 incidents per month			
10000 S TRAX:	27	2.25 incidents per month			
9400 S TRAX:	0	0.00 incidents per month			
9000 S TRAX:	30	2.50 incidents per month			
Total	61	5.08 incidents per month			

**2012 (Jan-June) CRIME HANDLED BY TRANSIT POLICE
IN SANDY JURISDICTION**

DATE	LOCATION	OFFENSE	CASE NUMBER
1/6/2012	10000 South	Theft of Services	2012-000065
1/11/2012	9400 South	Theft of Services	2012-000148
1/12/2012	9000 South	Theft of Services	2012-000161
1/12/2012	9000 South	Warrant Service	2012-000162
1/17/2012	9000 South	Vehicle Burglary	2012-000238
1/19/2012	10000 South	Criminal Mischief	2012-000269
1/19/2012	10000 South	Criminal Mischief	2012-000268
1/23/2012	10000 South	Theft of Services	2012-000322
1/25/2012	10000 South	Theft (catalytic)	2012-000364
1/25/2012	9400 South	Theft of Services	2012-000362
1/29/2012	10000 South	Theft of Services	2012-000408
1/29/2012	9000 South	Theft of Services	2012-000416
2/2/2012	10000 South	Theft of Services	2012-000471
2/3/2012	10000 South	Criminal Trespass	2012-000499
2/3/2012	10000 South	Theft of Services	2012-000491
2/4/2012	9000 South	Theft of Services	2012-000510
2/5/2012	10000 South	Theft of Services	2012-000519
2/8/2012	10000 South	Criminal Trespass	2012-000572
2/8/2012	9000 South	Theft of Services	2012-000565
2/11/2012	10000 South	Theft of Services	2012-000611
2/16/2012	9000 South	Warrant Service	2012-000662
2/17/2012	10000 South	Criminal Trespass	2012-000681
2/27/2012	9000 South	Theft of Services	2012-000780
3/7/2012	9000 South	Public Intox	2012-000876
3/8/2012	10000 South	Public Intox	2012-000894
3/9/2012	9000 South	Vehicle Burglary	2012-000908
3/13/2012	9000 South	Theft of Services	2012-000958
3/21/2012	9000 South	Theft (bike)	2012-001116
3/21/2012	9000 South	Theft (catalytic)	2012-001065
3/24/2012	10000 South	Theft (bike)	2012-001095
3/25/2012	9000 South	Theft of Services	2012-001107
4/3/2012	9000 South	Criminal Trespass	2012-001213
4/9/2012	10000 South	Theft of Services	2012-001282
4/11/2012	10000 South	Theft (catalytic)	2012-001312
4/11/2012	9000 South	Theft (catalytic)	2012-001339
4/11/2012	9000 South	Theft (catalytic)	2012-001313
4/13/2012	10000 South	Theft of Services	2012-001343
4/20/2012	10000 South	Theft of Services	2012-001429
4/20/2012	9000 South	Theft (catalytic)	2012-001420
4/21/2012	9750 S 440 W	Criminal Mischief	2012-001426
4/23/2012	9400 South	Theft of Services	2012-001438
4/25/2012	9000 South	POCS - Barbiturate	2012-001453
5/4/2012	9000 South	Impersonation	2012-001529
5/8/2012	10000 South	Vehicle Theft	2012-001552
5/10/2012	10000 South	Theft (catalytic)	2012-001569
5/17/2012	9000 South	Theft of Services	2012-001640
5/19/2012	10000 South	Warrant Service	2012-001661
5/23/2012	9000 South	Theft of Services	2012-001691
5/24/2012	9000 South	Theft of Services	2012-001701
5/30/2012	9000 South	Public Intox	2012-001734
5/30/2012	9000 South	Vehicle Theft	2012-001733
6/9/2012	10000 South	False Info	2012-001819
6/13/2012	9000 South	Theft of Services	2012-001850
6/24/2012	10000 South	Theft of Services	2012-001923
Net Total	54		
Less	-25	Theft of Service	
Less	-1	9750 S 440 W	
Total	28		
2012 Total	66	Jan to Dec.	
TOTALS:	LESS FARE ENFORCMENTS VIOLATIONS		
10000 S TRAX	13	1.08 incidents per month	10000 South
9400 S TRAX	0	0 incidents per month	9400 South
9000 S TRAX	15	1.25 incidents per month	9000 South
9750 S 440 W	0	n/a	Other
Total	28	2.33 incidents per month	

2011 CRIME HANDLED BY TRANSIT POLICE

IN SANDY JURISDICTION



TOTALS:	LESS FARE ENFORCMENTS VIOLATIONS	
10000 S TRAX:	31	2.58 incidents per month
9400 S TRAX:	3	.25 incidents per month
9000 S TRAX:	15	1.25 incidents per month
Total	49	4.08 per month Average

DATE	LOCATION	OFFENSE	CASE NUMBER
1/3/2011	10000 S	Public Intox	2011-000028
1/7/2011	10000 S	Theft	2011-000071
1/20/2011	10000 S	Public Intox	2011-000198
2/5/2011	10000 S	Public Intox	2011-000362
2/7/2011	10000 S	Public Intox	2011-000381
2/26/2011	9000 S	Theft Vehicle Parts	2011-000623
3/1/2011	9000 S	Theft Vehicle Parts	2011-000655
3/7/2011	9400 S	POCS - Marijuana	2011-000717
3/15/2011	10000 S	Vehicle Burglary	2011-000809
4/8/2011	10000 S	Public Intox	2011-001028
4/11/2011	10000 S	Hit and Run Accident	2011-001074
4/18/2011	10000 S	Vehicle Theft	2011-001126
4/21/2011	9000 S	Vehicle Theft	2011-001157
4/28/2011	9000 S	Robbery	2011-001227
5/4/2011	9000 S	Public Intox	2011-001280
5/7/2011	10000 S	Vehicle Theft	2011-001306
5/12/2011	10000 S	Tobacco Violation	2011-001354
5/16/2011	9000 S	Public Intox	2011-001393
6/3/2011	10000 S	Simple Assault	2011-001567
6/9/2011	10000 S	Bike Theft	2011-001625
6/10/2011	9400 S	Bike Theft	2011-001631
6/18/2011	9000 S	Lewdness/Intox	2011-001715
6/29/2011	9000 S	Vehicle Theft	2011-001822
7/7/2011	10000 S	Bike Theft	2011-001946
7/18/2011	9000 S	Vehicle Theft	2011-001991
7/26/2011	10000 S	Bike Theft	2011-002055
8/15/2011	10000 S	POCS - Spice	2011-002242
8/16/2011	10000 S	Criminal Mischief	2011-002264
8/20/2011	10000 S	Public Intox	2011-002308
9/3/2011	9000 S	Vehicle Burglary	2011-002468
9/19/2011	10000 S	Vehicle Theft	2011-002626
9/22/2011	10000 S	Vehicle Theft	2011-002673
9/23/2011	10000 S	Criminal Mischief	2011-002684
9/27/2011	10000 S	Vehicle Burglary	2011-002742
9/29/2011	10000 S	Vehicle Burglary	2011-002770
10/7/2011	9000 S	Vehicle Theft	2011-002865
10/19/2011	9000 S	Bike Theft	2011-003094
10/26/2011	9400 S	Bike Theft	2011-003131
11/1/2011	10000 S	Vehicle Burglary	2011-003208
11/1/2011	10000 S	Vehicle Theft	2011-003206
11/5/2011	10000 S	Theft Vehicle Parts	2011-003265
11/7/2011	10000 S	Vehicle Burglary	2011-003287
11/29/2011	10000 S	Vehicle Theft	2011-003551
12/5/2011	9000 S	Vehicle Theft	2011-003628
12/8/2011	9000 S	Public Intox	2011-003682
12/12/2011	10000 S	Public Intox	2011-003722
12/14/2011	10000 S	Public Intox	2011-003758
12/16/2011	10000 S	Public Intox	2011-003779
12/27/2011	9000 S	Vehicle Theft	2011-003910
Total	49		

TOTALS: By location for entire year, all incidents

10000 S TRAX:	61
9000 S TRAX:	38
9400 S TRAX:	16

2010 CRIME HANDLED BY TRANSIT POLICE

IN SANDY JURISDICTION



TOTALS:	LESS FARE ENFORCMENTS VIOLATIONS	
10000 S TRAX:	46	3.83 incidents per month
9400 S TRAX:	3	.25 incidents per month
9000 S TRAX:	26	2.17 incidents per month
Total	75	6.25 per month Average

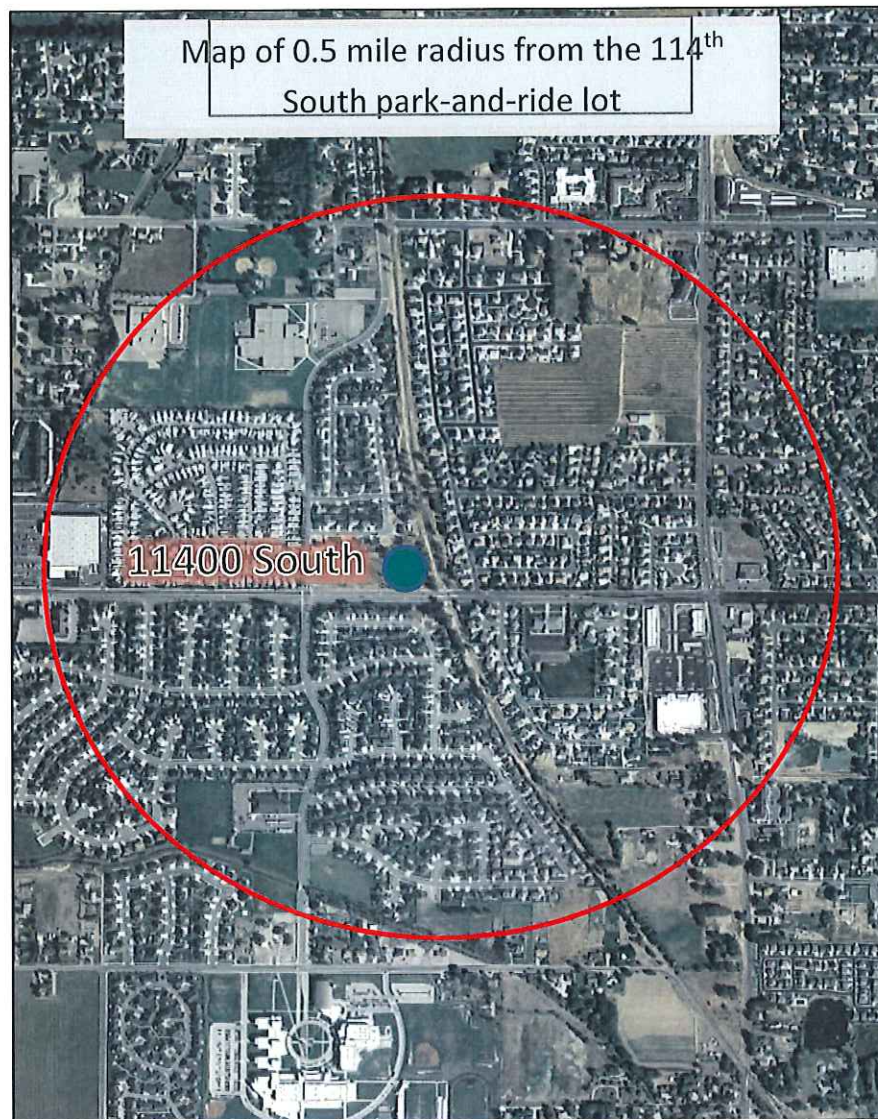
DATE	LOCATION	OFFENSE	CASE NUMBER
1/12/2010	10000 S	Public Intox	2010-000074
1/13/2010	10000 S	Hit & Run	2010-000086
1/16/2010	10000 S	Public Intox	2010-000104
1/27/2010	10000 S	POCS - hallucinogen	2010-000185
2/2/2010	10000 S	Disorderly Conduct	2010-000234
2/9/2010	10000 S	Public Intox	2010-000292
2/9/2010	10000 S	Public Intox	2010-000291
2/10/2010	10000 S	Theft - plates	2010-000298
2/13/2010	9400 S	POCS - hallucinogen	2010-000323
3/4/2010	9000 S	Disorderly Conduct	2010-000470
3/6/2010	10000 S	Public Intox	2010-000487
3/17/2010	9000 S	Theft Vehicle Parts	2010-000571
3/26/2010	9000 S	Brandishing Weapon	2010-000634
4/2/2010	10000 S	Public Intox	2010-000680
4/13/2010	10000 S	Urinating / Public	2010-000759
4/15/2010	9000 S	Theft Vehicle Parts	2010-000780
4/22/2010	9000 S	Theft Vehicle Parts	2010-000826
4/22/2010	9000 S	Theft Vehicle Parts	2010-000825
4/27/2010	10000 S	Public Intox	2010-000870
4/30/2010	10000 S	Theft Vehicle Parts	2010-000899
5/1/2010	10000 S	Criminal Mischief	2010-000906
5/8/2010	10000 S	Theft Vehicle Parts	2010-000976
5/10/2010	10000 S	Theft Vehicle Parts	2010-000990
5/10/2010	10000 S	Theft Vehicle Parts	2010-000988
5/10/2010	10000 S	Theft Vehicle Parts	2010-000986
5/10/2010	9000 S	Theft Vehicle Parts	2010-000989
5/17/2010	9000 S	Public Intox	2010-001049
5/19/2010	10000 S	Bike Theft	2010-001075
6/8/2010	10000 S	Assault on PO	2010-001200
6/8/2010	9400 S	Criminal Mischief	2010-001206
6/29/2010	10000 S	Public Intox	2010-001363
7/16/2010	9000 S	Public Intox	2010-001516
7/19/2010	9000 S	Bike Theft	2010-001555
7/21/2010	10000 S	Criminal Mischief	2010-001558
7/21/2010	9000 S	Disorderly Conduct	2010-001568
8/19/2010	9000 S	Vehicle Burglary	2010-001820
8/30/2010	10000 S	Criminal Mischief	2010-001892
8/31/2010	10000 S	Public Intox	2010-001917

9/4/2010	10000 S	Public Intox	2010-001946
9/5/2010	10000 S	Public Intox	2010-001953
9/14/2010	9000 S	Vehicle Theft	2010-002032
9/16/2010	10000 S	Sex Abuse Child	2010-002072
9/20/2010	10000 S	Vehicle Burglary	2010-002085
9/30/2010	10000 S	Vehicle Burglary	2010-002178
10/4/2010	10000 S	Criminal Mischief	2010-002210
10/5/2010	10000 S	Criminal Mischief	2010-002222
10/5/2010	10000 S	Vehicle Burglary	2010-002221
10/22/2010	9000 S	Theft Vehicle Parts	2010-002383
10/23/2010	9000 S	Theft Vehicle Parts	2010-002396
10/25/2010	10000 S	Vehicle Burglary	2010-002415
10/25/2010	9000 S	Vehicle Burglary	2010-002427
10/25/2010	9000 S	Vehicle Burglary	2010-002421
10/25/2010	9000 S	Vehicle Burglary	2010-002413
10/25/2010	10000 S	Vehicle Theft	2010-002418
10/26/2010	9000 S	Public Intox	2010-002428
10/28/2010	10000 S	Shoplifting	2010-002448
10/29/2010	10000 S	Vehicle Theft	2010-002457
11/1/2010	10000 S	Harassment	2010-002482
11/2/2010	9000 S	Tobacco Violation	2010-002497
11/6/2010	10000 S	Theft Vehicle Parts	2010-002543
11/6/2010	9000 S	Theft Vehicle Parts	2010-002542
11/8/2010	10000 S	Public Intox	2010-002564
11/17/2010	9000 S	Vehicle Theft	2010-002642
11/18/2010	10000 S	Theft Vehicle Parts	2010-002654
11/23/2010	10000 S	Theft Vehicle Parts	2010-002694
11/23/2010	9000 S	Theft Vehicle Parts	2010-002696
11/23/2010	9000 S	Theft Vehicle Parts	2010-002689
12/1/2010	10000 S	Theft	2010-002757
12/3/2010	10000 S	Vehicle Burglary	2010-002778
12/4/2010	10000 S	Assault on PO	2010-002787
12/4/2010	9000 S	Vehicle Theft	2010-002792
12/8/2010	9000 S	Urinating / Public	2010-002838
12/11/2010	10000 S	Graffiti (train)	2010-002874
12/23/2010	9400 S	Criminal Mischief	2010-002974
12/27/2010	10000 S	Vehicle Theft	2010-002997
Total	75		

8. Violations issued within 0.5 mile radius of 144th South Park and Ride Lot. 2011–2017 provided by Sandy City

Sandy City Police Department Cases Within 1/2 Mile of 361 East 11400 South January 1, 2011 - December 31, 2018													
Year	Jan	Feb	Mar	Apr	May	Jun	Jul	Aug	Sep	Oct	Nov	Dec	Total
2011	29	24	30	20	27	27	22	37	34	35	31	21	337
2012	18	31	29	34	28	28	16	23	19	33	23	33	315
2013	17	26	25	22	38	25	28	34	39	26	19	26	325
2014	25	31	22	18	41	18	25	33	19	29	17	21	299
2015	29	15	29	32	31	29	23	23	25	34	13	15	298
2016	15	26	25	19	24	30	34	19	27	15	28	18	280
2017	17	19	35	17	23	25	24	26	16	21	12	14	249
2018	19	11	23	16	12	23	22	15	18	18	15	16	208
Avg.	21	23	27	22	28	26	24	26	25	26	20	21	289

9. Map of 0.5 mile radius from the 114th park-and-ride lot



10. 114th South Park and Ride Lot Residential Permit-Only Parking Area Plan

