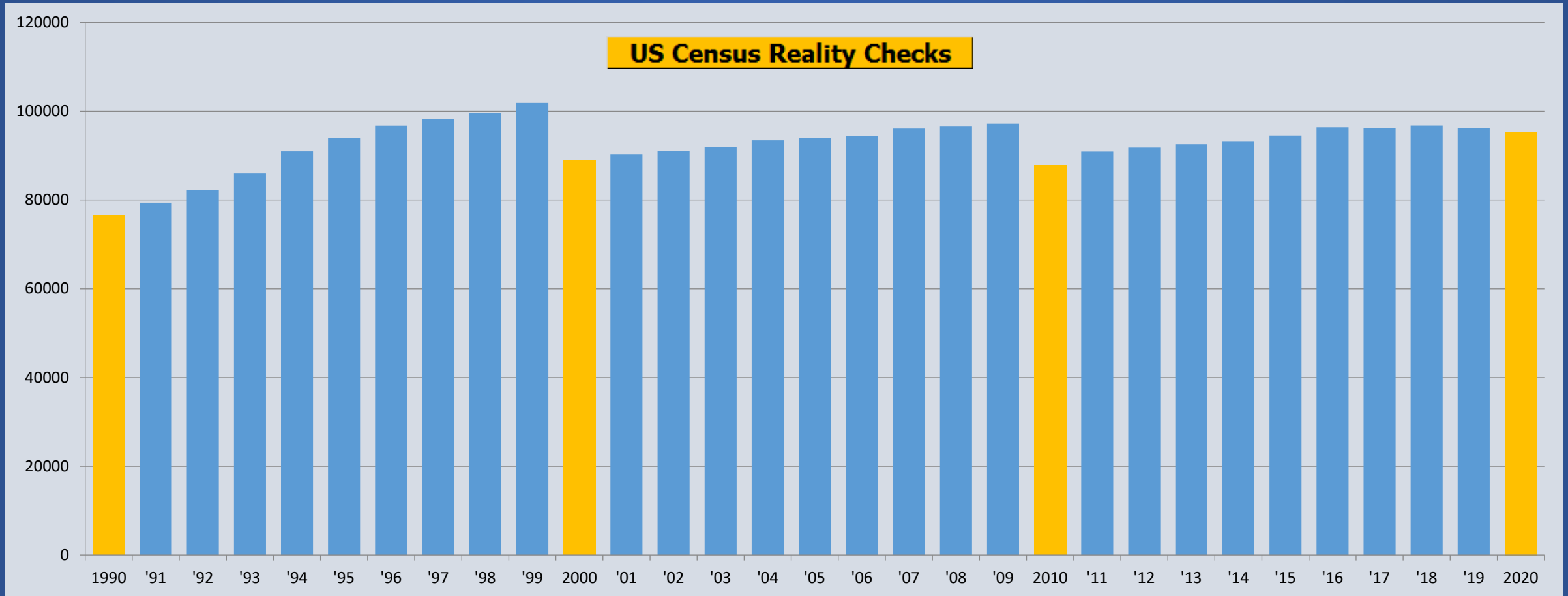


# Sandy City Council Redistricting Study

February, 2022

- Municipalities are required to re-balance their City Council Districts every decade after the results of the decennial US Census are available.
- The last Census was taken in 2010. Sandy was legally required to rebalance the Districts by February, 2012. This was completed by using GIS technology.
- The next Census was taken in April, 2020. We have received population data for the 2020 Census.
- Agencies that estimate population typically work with much larger areas than are required for the detailed needs of redistricting.

# How have past estimates turned out?



**Population estimates leading up to the 2000 & 2010 Census were much higher than the Census figures that came in, where counts leading up to the 2020 Census were much closer to the Census figures only being off 700 people from 2019 to 2020.**

# Redistricting *Guidelines*, per Utah Legislature

New districts should seek to:

- Be substantially equal in population
- Be compact
- Be contiguous
- Preserve political subdivisions (wouldn't apply to cities)
- Preserve communities of interest
- Preserve cores of prior districts
- Protect incumbents? In Utah, this *can be* considered. Good for continuity.

Sources:

[le.utah.gov/interim/2016/pdf/00002691.pdf](http://le.utah.gov/interim/2016/pdf/00002691.pdf)

[le.utah.gov/interim/2011/pdf/2011\\_Redistricting\\_Principles.pdf](http://le.utah.gov/interim/2011/pdf/2011_Redistricting_Principles.pdf)

SLC principles

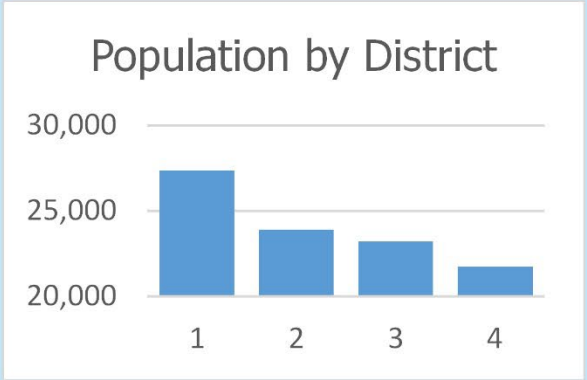


# CURRENT Sandy City Council Districts

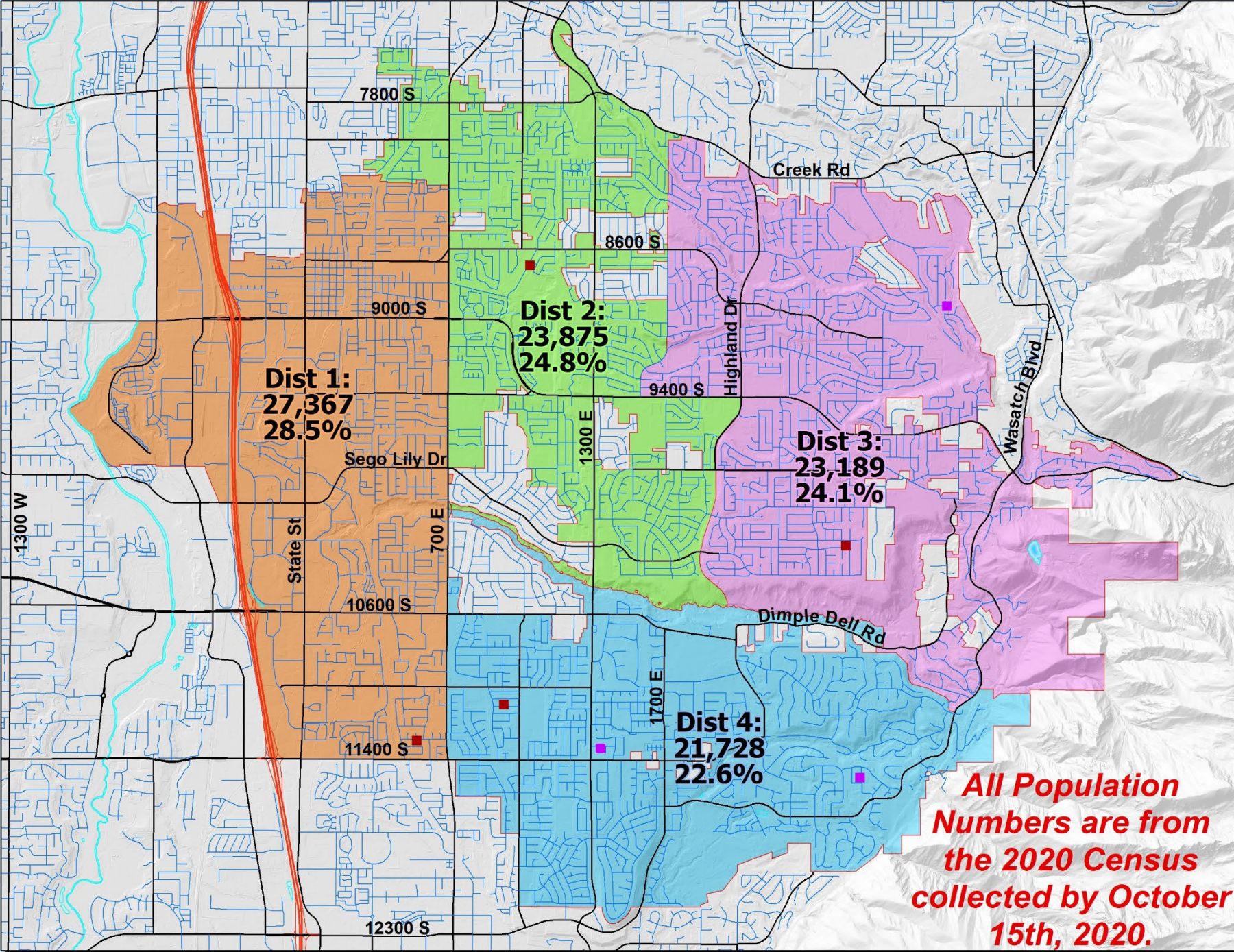
as of 18-Feb-2022

Current:	Population by District	% of total	Deviation from ideal
District 1	27,367	28.5%	3.5%
District 2	23,875	24.8%	-0.2%
District 3	23,189	24.1%	-0.9%
District 4	21,728	22.6%	-2.4%
Totals:	96,159	100.00%	

(Goal: <5% deviation between the districts.  
Ideal % =25%)



- Incumbents
- Incumbent At-Large



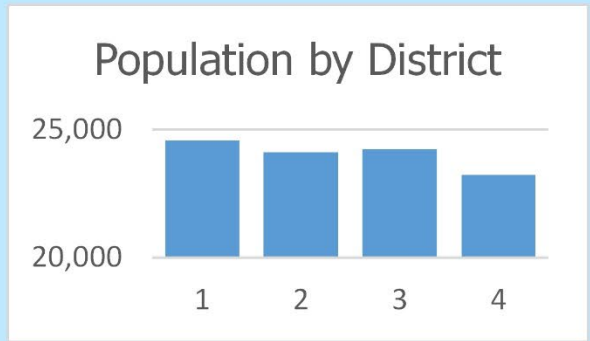
**All Population Numbers are from the 2020 Census collected by October 15th, 2020.**



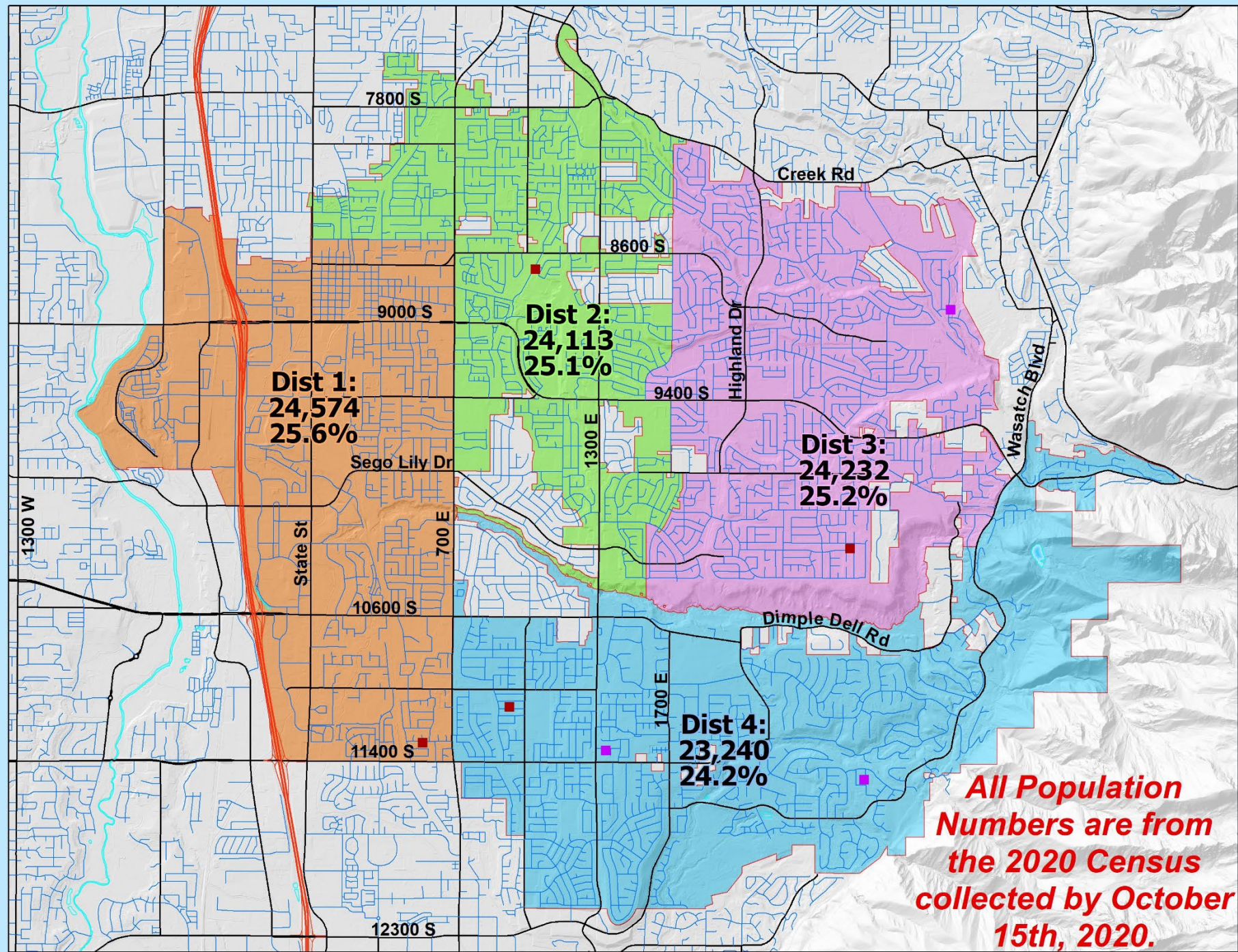
# Keep and Fix 4 Districts Option 4-1 as of 18-Feb-2022

Fix 4 Dists: Option 4-1	Population by District	% of total	Deviation from ideal
District 1	24,574	25.6%	0.6%
District 2	24,113	25.1%	0.1%
District 3	24,232	25.2%	0.2%
District 4	23,240	24.2%	-0.8%
Totals:	96,159	100.0%	

(Goal: <5% deviation between the districts.  
Ideal % =25%)



- Incumbents
- Incumbent At-Large

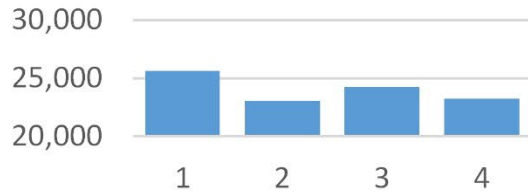




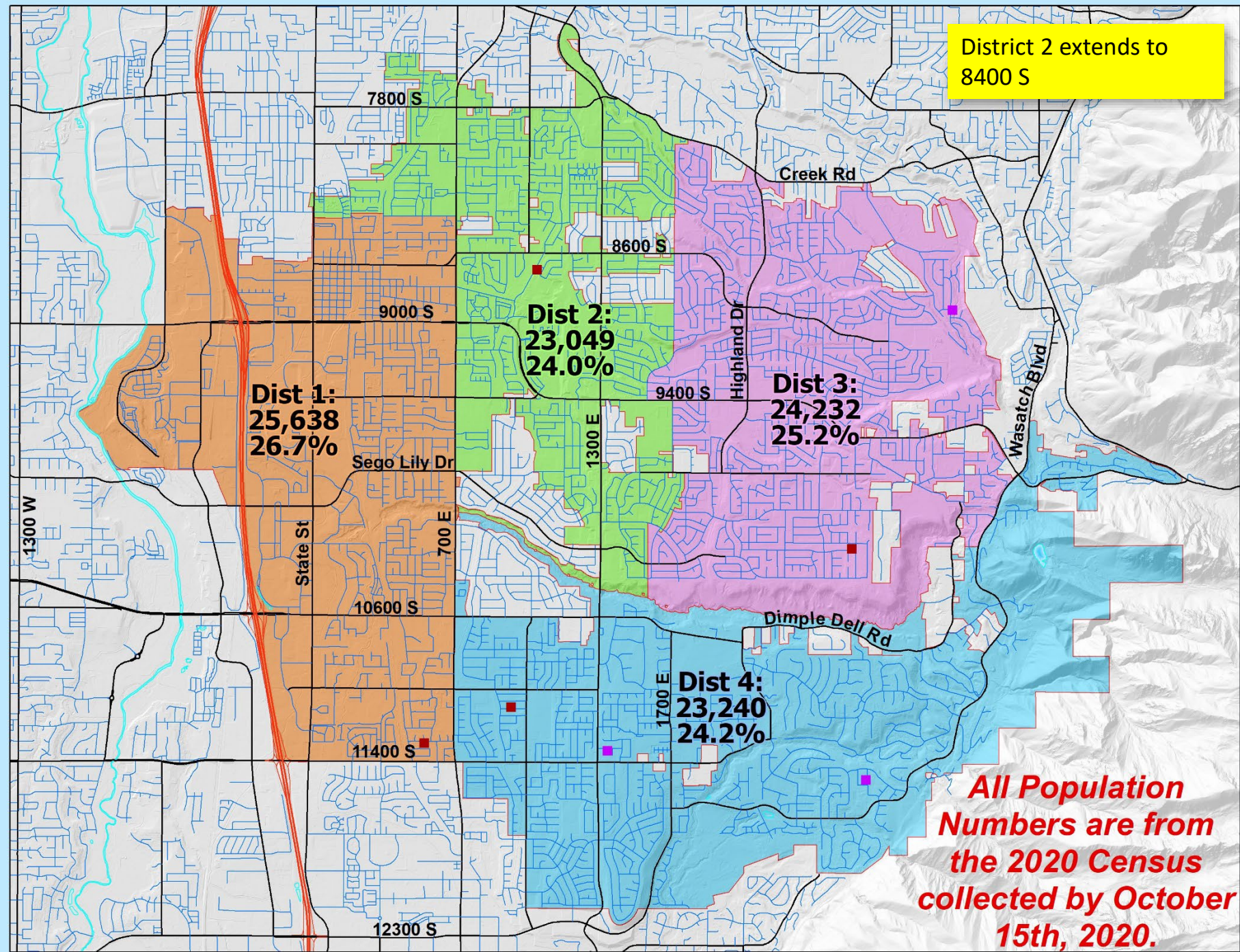
# Keep and Fix 4 Districts Option 4-1b as of 17-Mar-2022

Fix 4 Dists: Option 4- 1b	Population by District	% of total	Deviation from ideal
Dist 1	25,638	26.7%	1.7%
Dist 2	23,049	24.0%	-1.0%
Dist 3	24,232	25.2%	0.2%
Dist 4	23,240	24.2%	-0.8%
Totals:	96,159	100.0%	
(Goal: <5% deviation between the districts. Ideal % =25%)			

Population by District



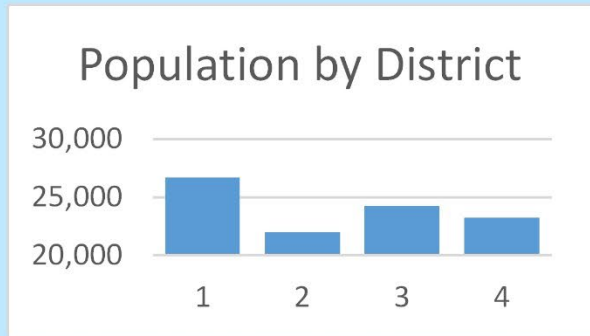
- Incumbents
- Incumbent At-Large



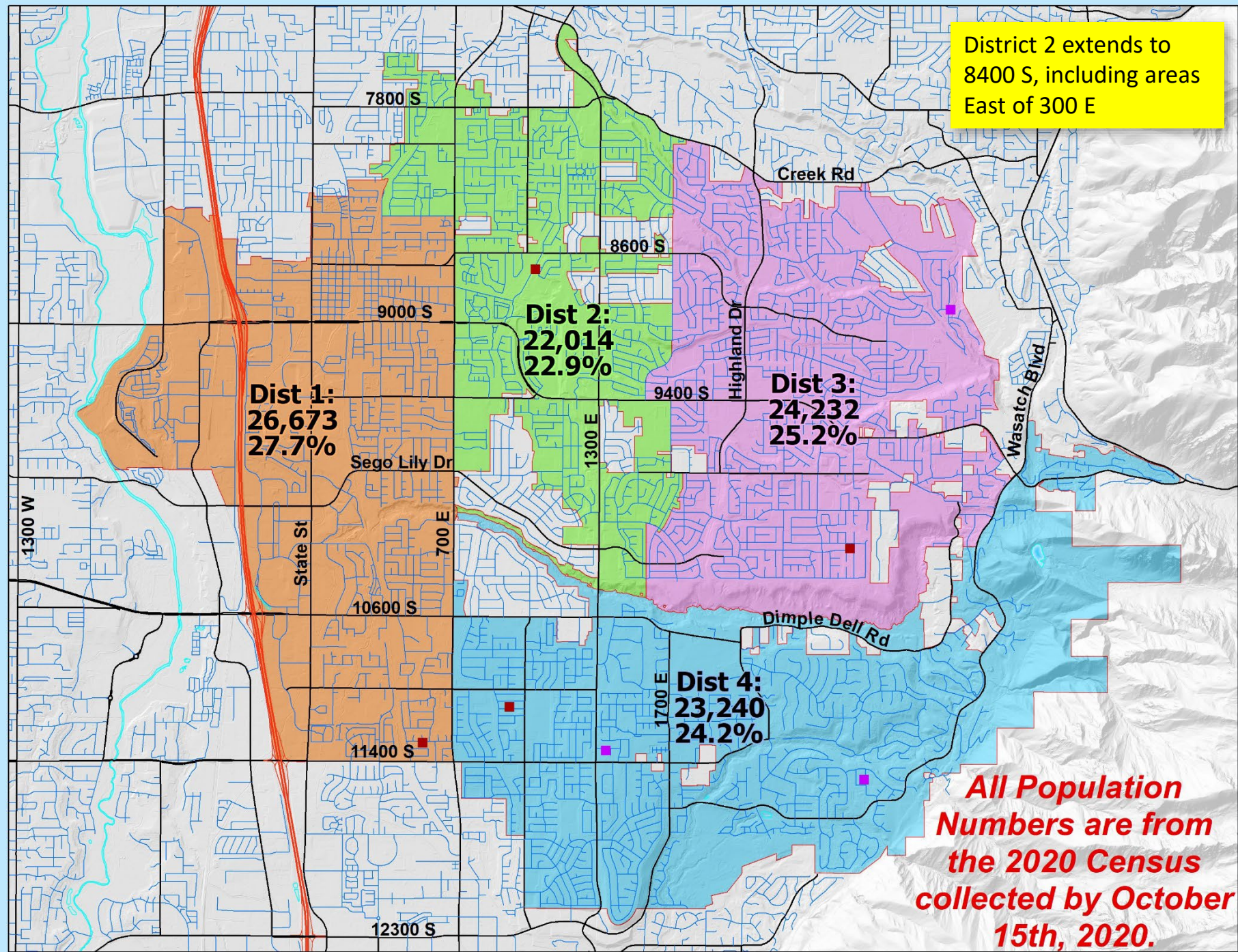


# Keep and Fix 4 Districts Option 4-1c as of 18-Mar-2022

Fix 4 Dists: Option 4- 1c	Population by District	% of total	Deviation from ideal
Dist 1	26,673	27.7%	2.7%
Dist 2	22,014	22.9%	-2.1%
Dist 3	24,232	25.2%	0.2%
Dist 4	23,240	24.2%	-0.8%
Totals:	96,159	100.0%	
(Goal: <5% deviation between the districts. Ideal % =25%)			



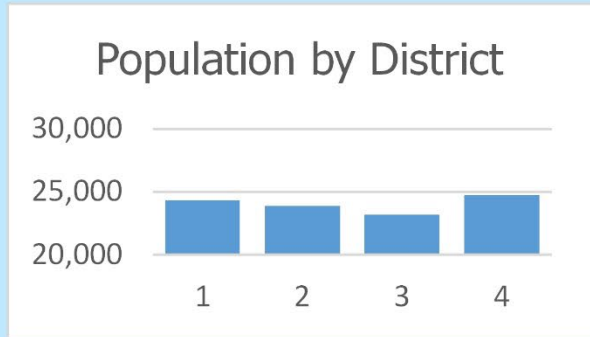
- Incumbents
- Incumbent At-Large





# Keep and Fix 4 Districts Option 4-2 as of 3-Mar-2022

Fix 4 Dists: Option 4-2	Population by District	% of total	Deviation from ideal
Dist 1	24,363	25.3%	0.3%
Dist 2	23,875	24.8%	-0.2%
Dist 3	23,189	24.1%	-0.9%
Dist 4	24,732	25.7%	0.7%
Totals:	96,159	100.0%	
(Goal: <5% deviation between the districts. Ideal % =25%)			



- Incumbents
- Incumbent At-Large

