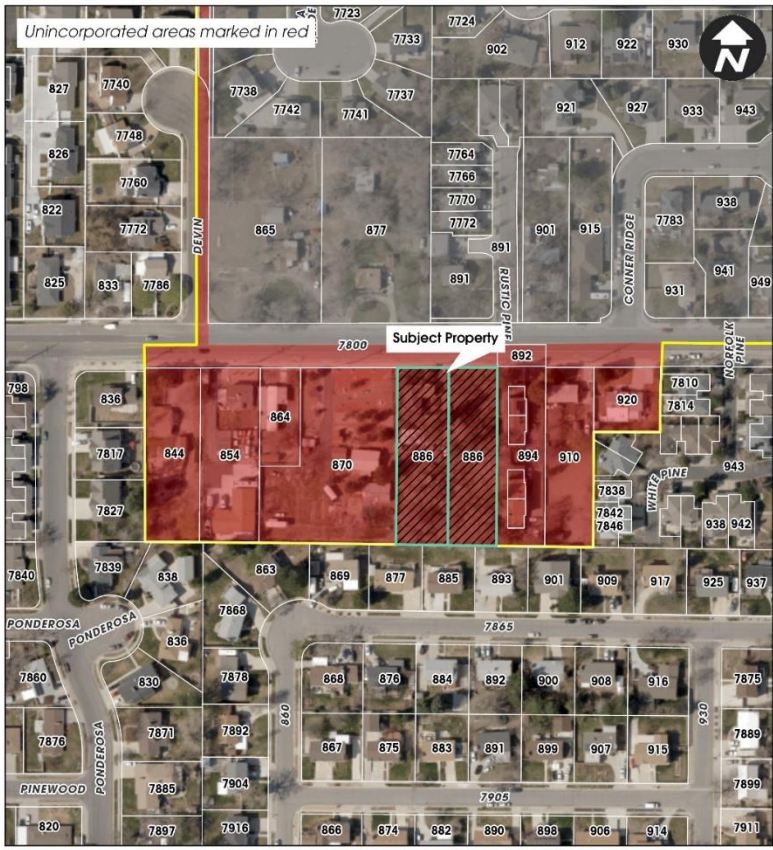


886 E. 7800 S. Trust Annexation

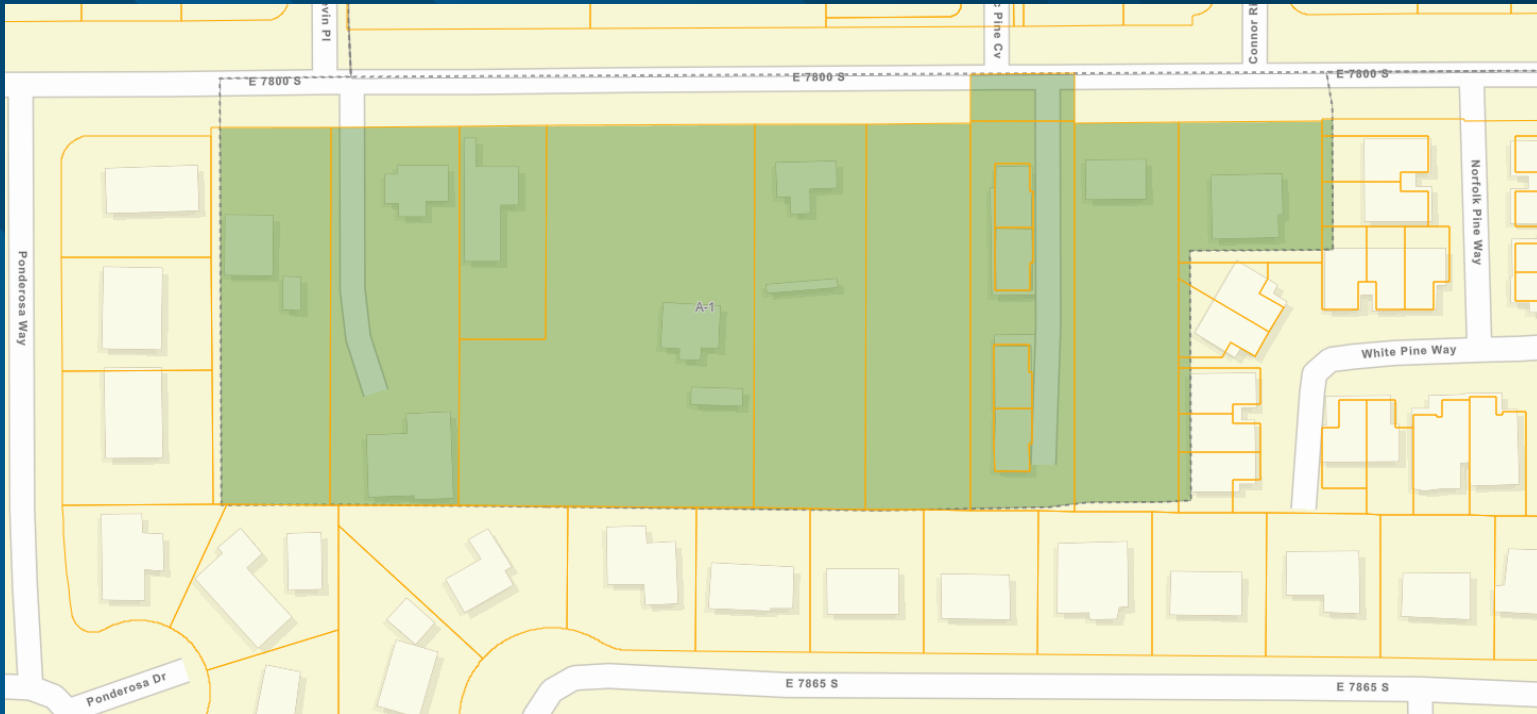


- 886 E 7800 S Trust Annexation
- 886 E 7800 S [Community #6, High Point]
- Request: To annex a certain contiguous unincorporated area, totaling approximately 0.93 acres.



 **Subject Property**
ANX01022024-006689
Annexation
886 E 7800 S

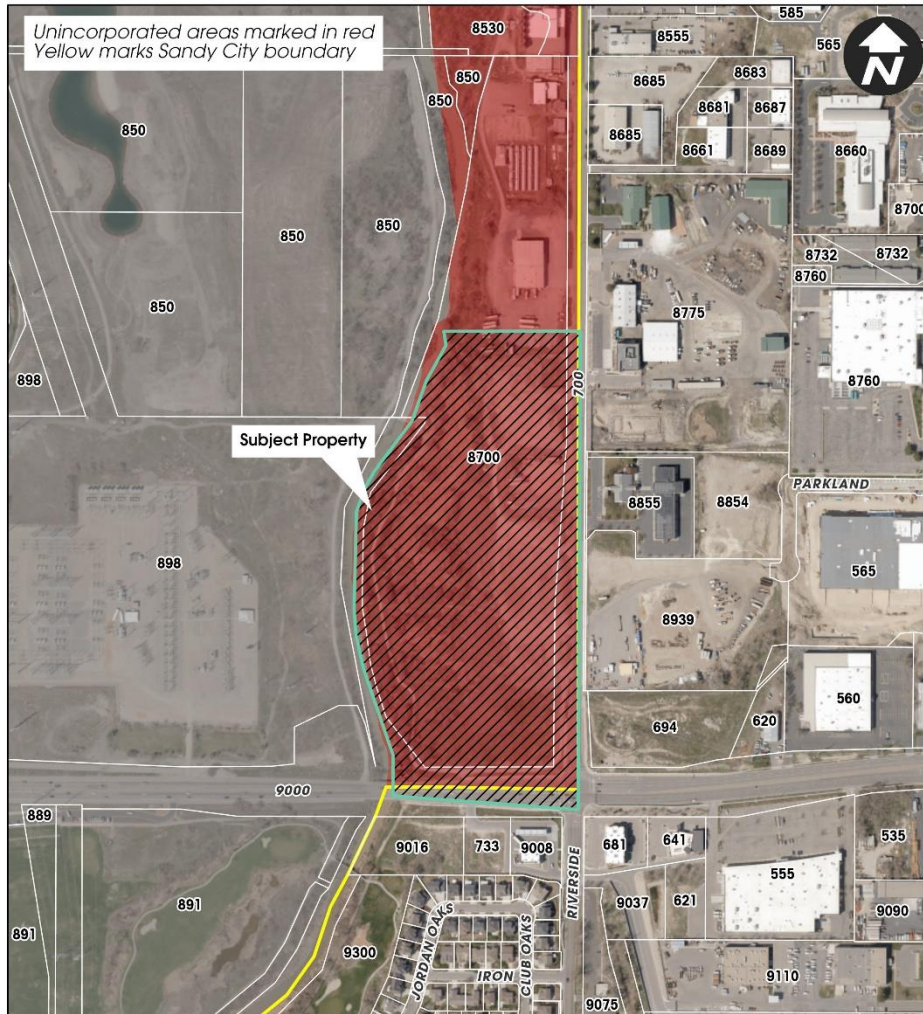




County Zoning is A-1.
Proposed Sandy Zoning is R-1-10

Planning Commission reviewed on April 4. They
are forwarding a positive recommendation.

FBAC Annexation



•FBAC Development Annexation

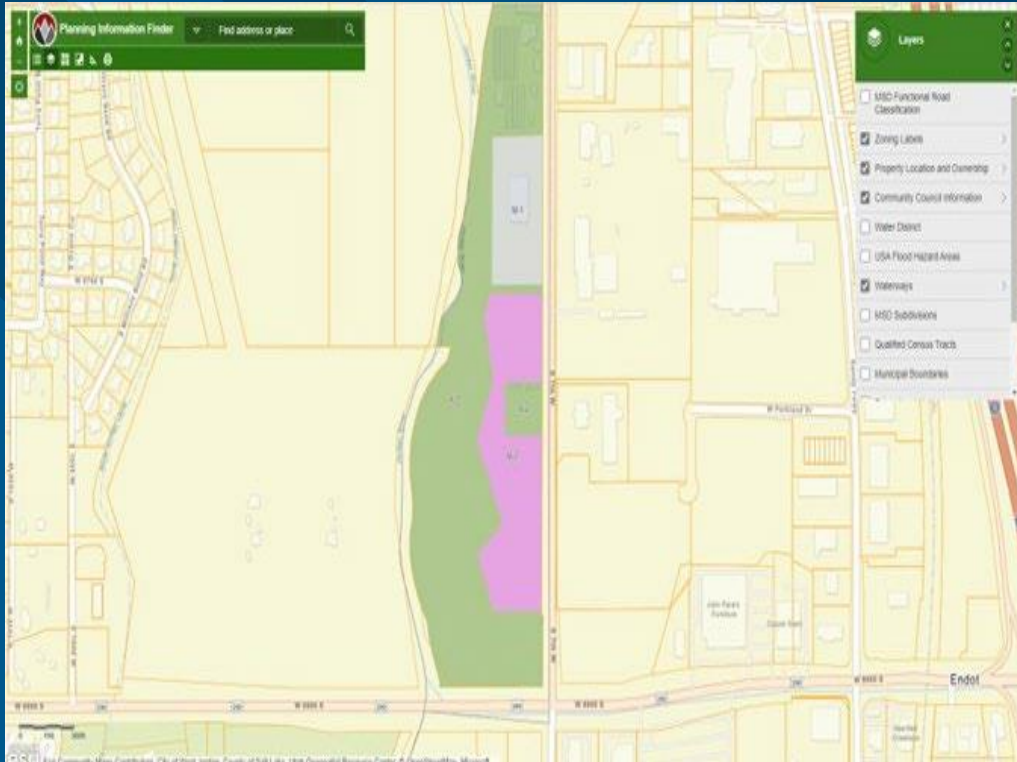
•8700 S 700 W
[Community #1, Northwest Exposure]

Request: To annex a contiguous unincorporated area, totaling approximately 27.68 acres, located at approximately 8700 S 700 W in Salt Lake County, Utah.



 **Subject Property**
*Approximate location

ANX03072024-006727
Proposed Annexation
8700 S 700 W



County Zoning is A-2 and M-2.
Proposed Sandy Zoning is ID.

Planning Commission reviewed on April 4. They
are forwarding a positive recommendation.