

[illegible]

- 65 E. 11000 S.
- 0.18 acre
- LC to R-1-6
- File #: REZ09302024-006857

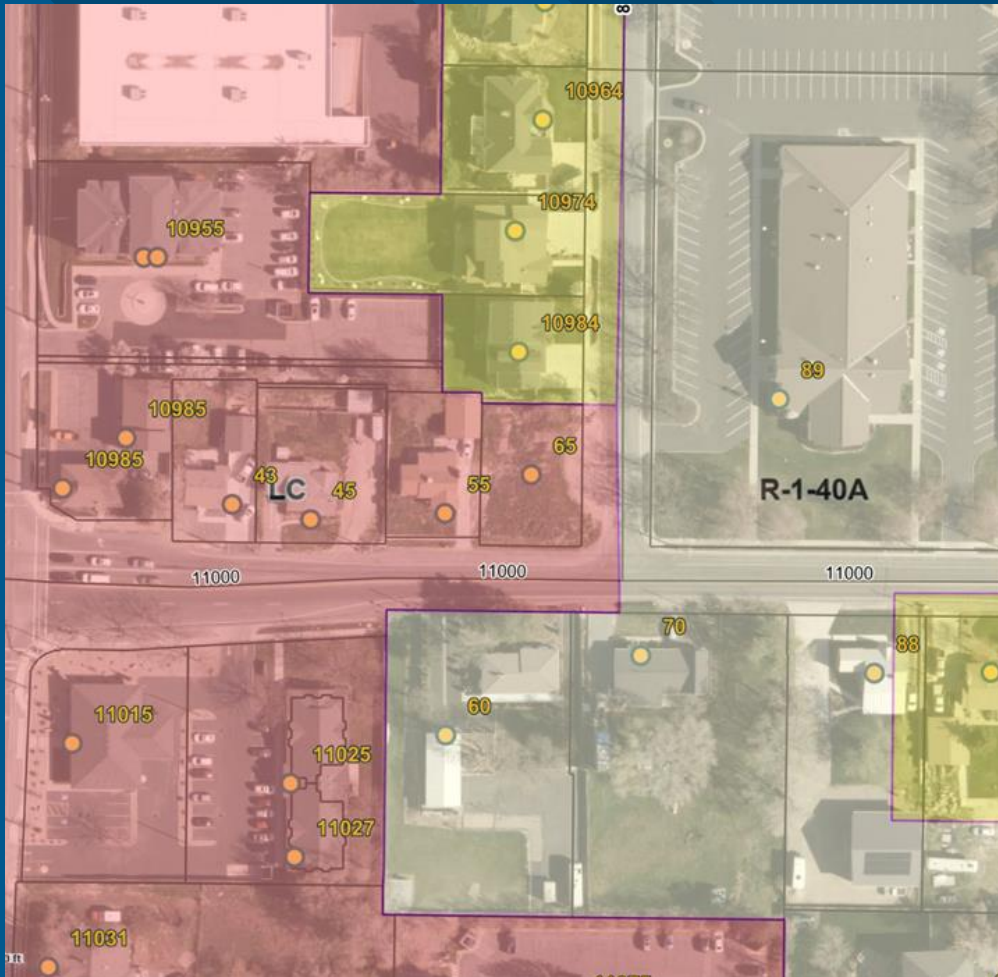


Sandy City, UT  
Community Development Department

## City Council Presentation



# Zoning



## Surrounding Zone Districts

- North: R-1-10  
(single-family subdivision)
- East: R-1-40A  
(church building)
- South: R-1-40A  
(11000 S., single-family homes)
- West: LC  
(single-family home)



