

DEVELOPMENT SUMMARY

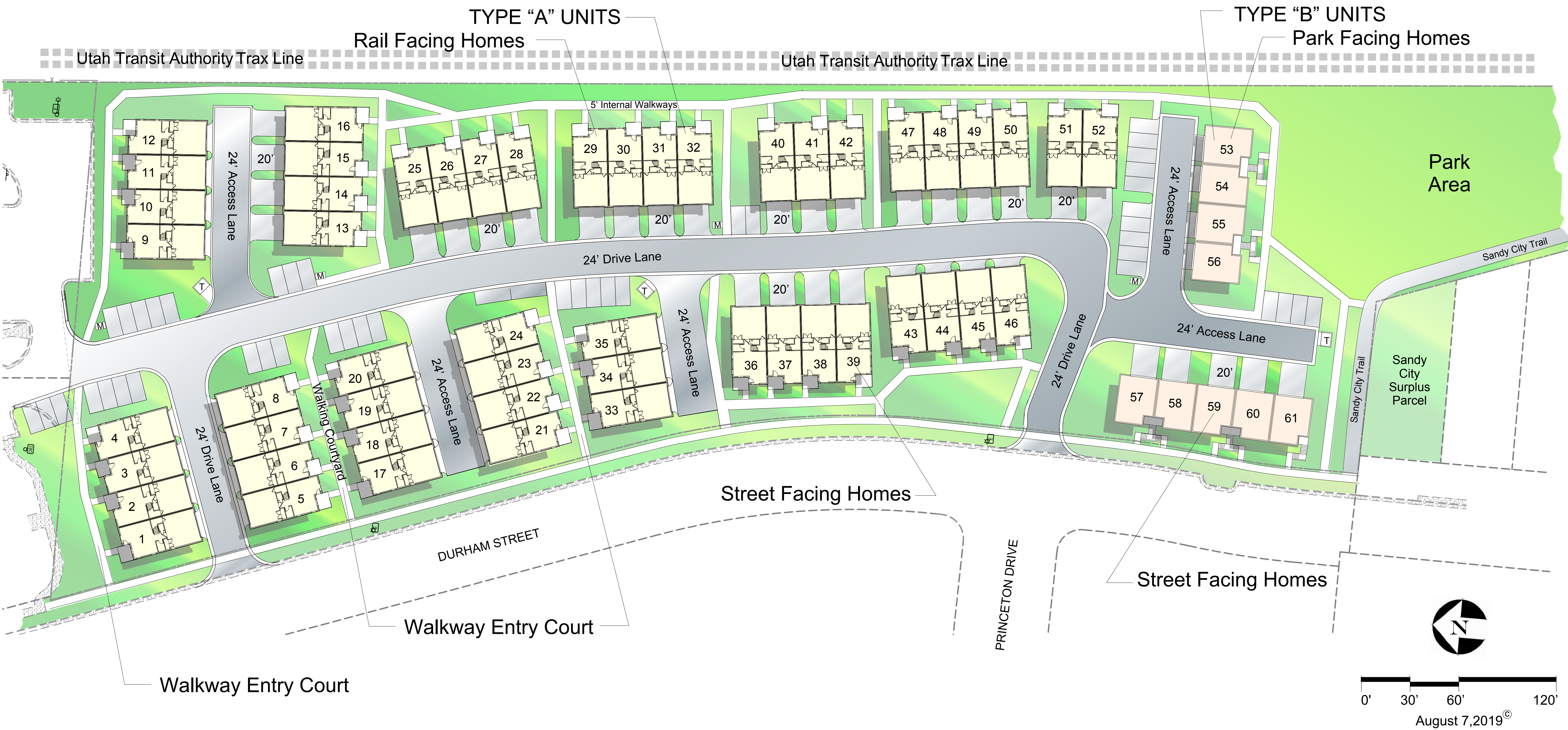
Lots 1, 2, & 3 Totals

61 TOTAL HOMES

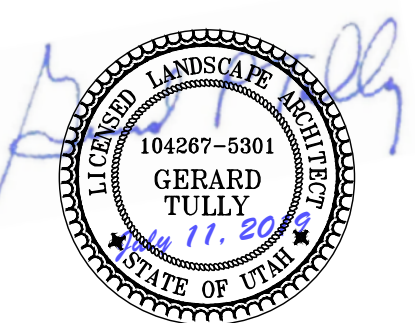
52 Townhomes - Type 'A'
9 Townhomes - Type 'B'

227 ON-SITE PARKING

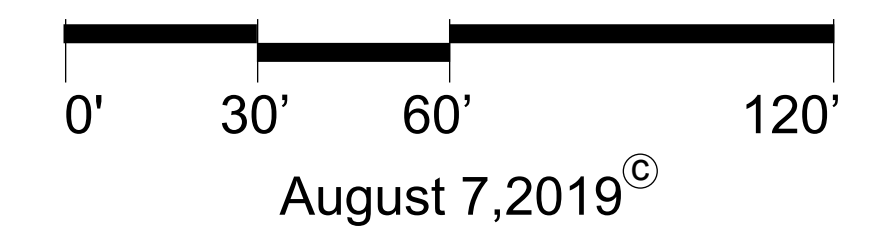
122 Garage Spaces
60 Driveway Spaces
45 Guest Spaces

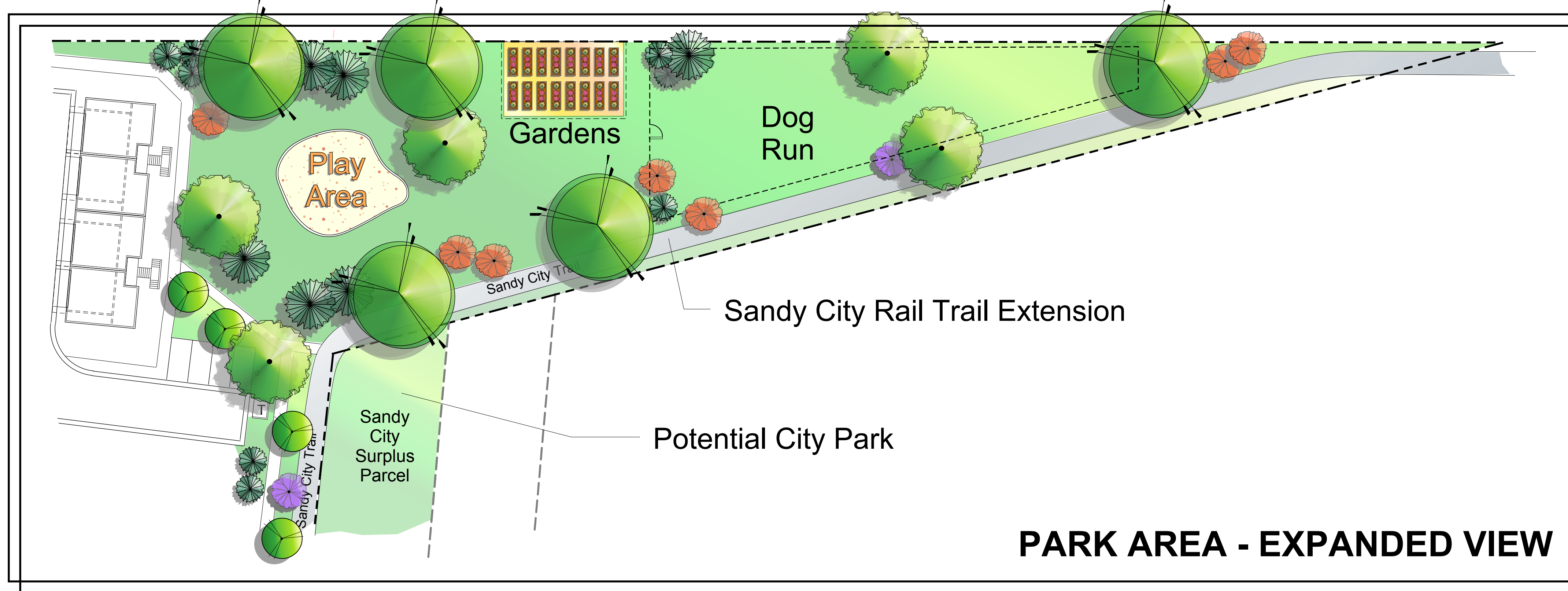


PRINCETON TERRACE
8377 SOUTH DURHAM STREET SANDY, UTAH



Preliminary
Site Plan





DEVELOPMENT SUMMARY

Lots 1, 2, & 3 Totals

61 TOTAL HOMES

52 Townhomes - Type 'A'
9 Townhomes - Type 'B'

227 ON-SITE PARKING

122 Garage Spaces
60 Driveway Spaces
45 Guest Spaces

Tully Design LLC
Landscape Architecture
Community Design
Land Planning
Salt Lake City, Utah
(801) 556-8991

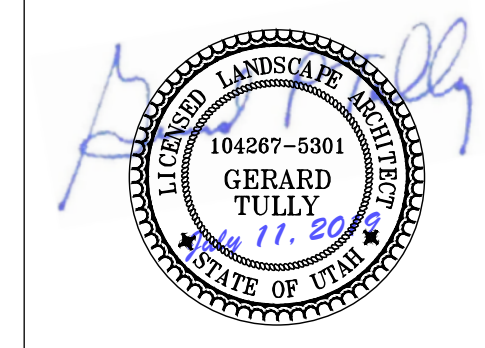
Zenith Development

CLIENT: Zenith Development LLC
2040 Murray Holladay Road,
Suite 204
Salt Lake City, Utah 84117
(801) 428-3755

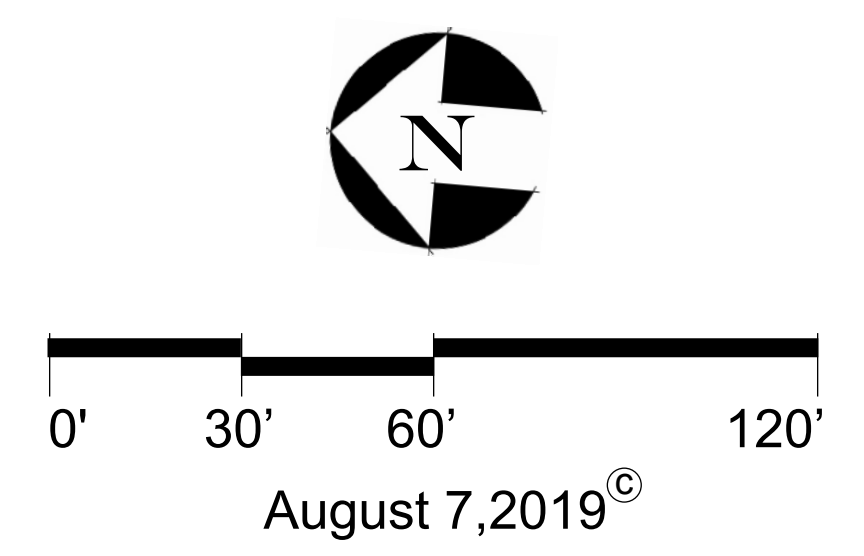
REVISIONS:



PRINCETON TERRACE
8377 SOUTH DURHAM STREET SANDY, UTAH



Preliminary Site Plan



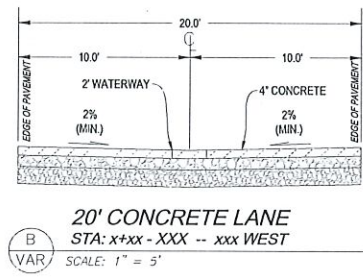
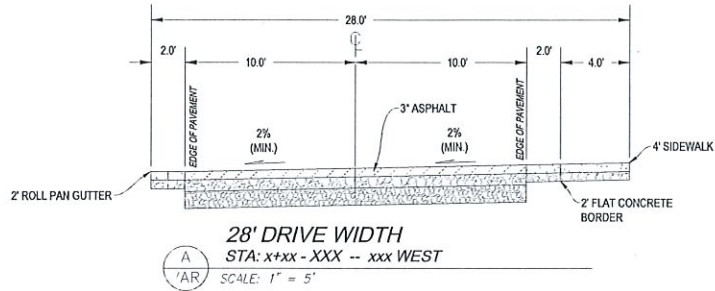
BENCHMARK

SALT LAKE COUNTY WITNESS CORNER
 LOCATED S 89°15'05" E 121.06' FROM WEST
 QUARTER CORNER, OF SECTION 31, T2S, R1E,
 SALT LAKE BASE AND MERIDIAN.
 FOUND BRASS CAP.

ELEVATION = 4403.82

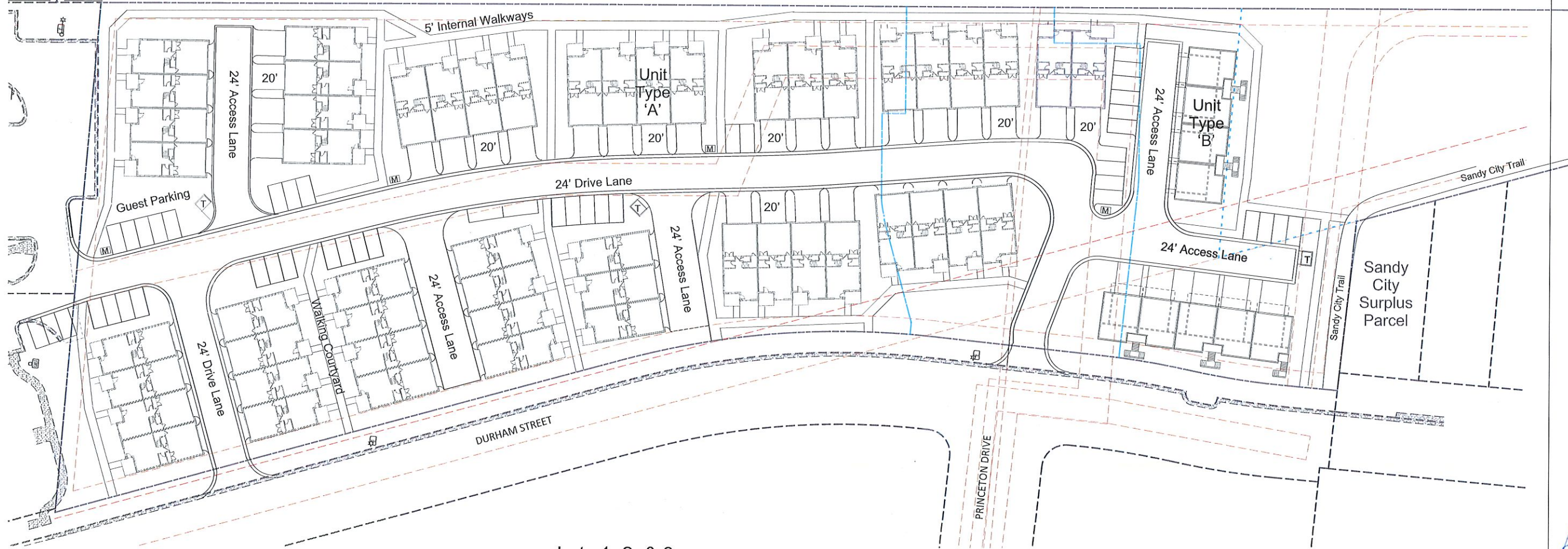


CALL BLUESTAKES @ 811 AT LEAST 48
 HOURS PRIOR TO THE COMMENCEMENT
 OF ANY CONSTRUCTION

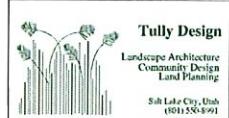


Utah Transit Authority Trax Line

150 EAST



- Lots 1, 2, & 3
- 52 Townhomes - Type 'A'
- 9 Townhomes - Type 'B'
- 104 Garage Spaces
- 60 Driveway Spaces
- 45 Guest Spaces



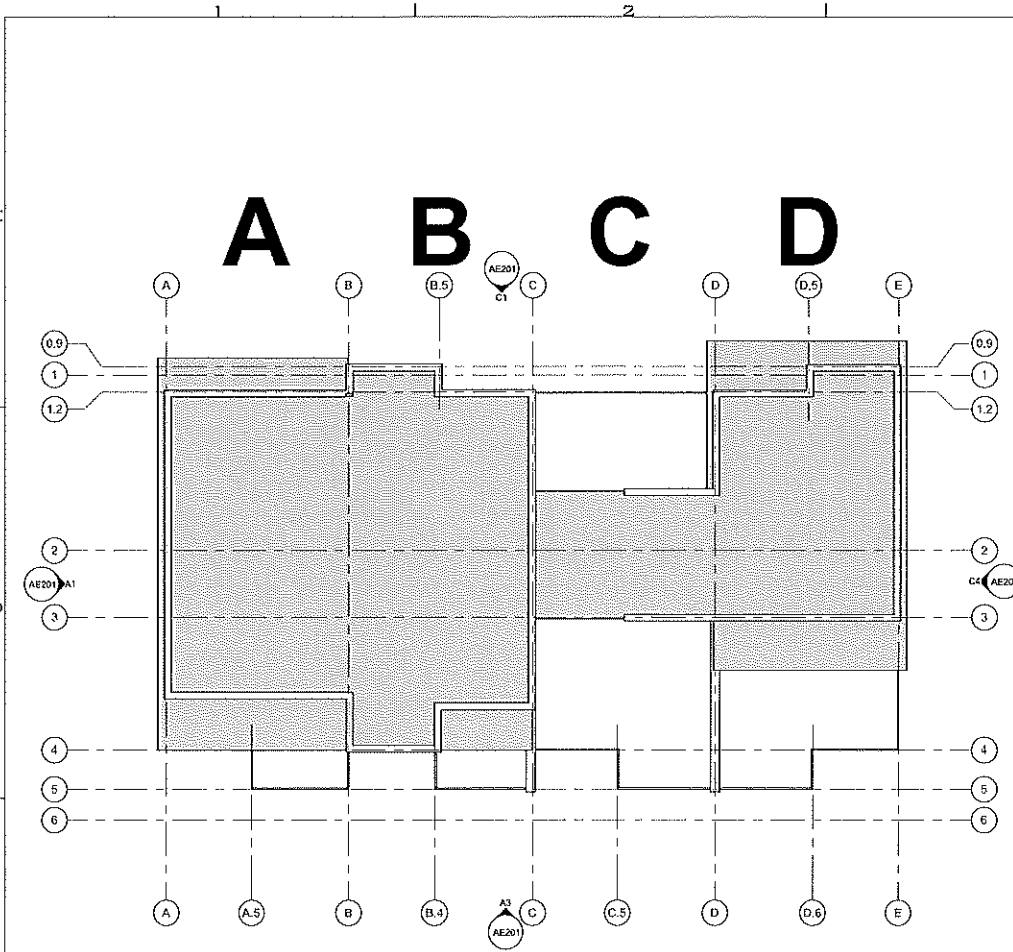
CLIENT: Zenith Development LLC
 2040 Murray Holladay Road,
 Suite 204
 Salt Lake City, Utah 84117
 (801) 428-3755

REVISIONS:

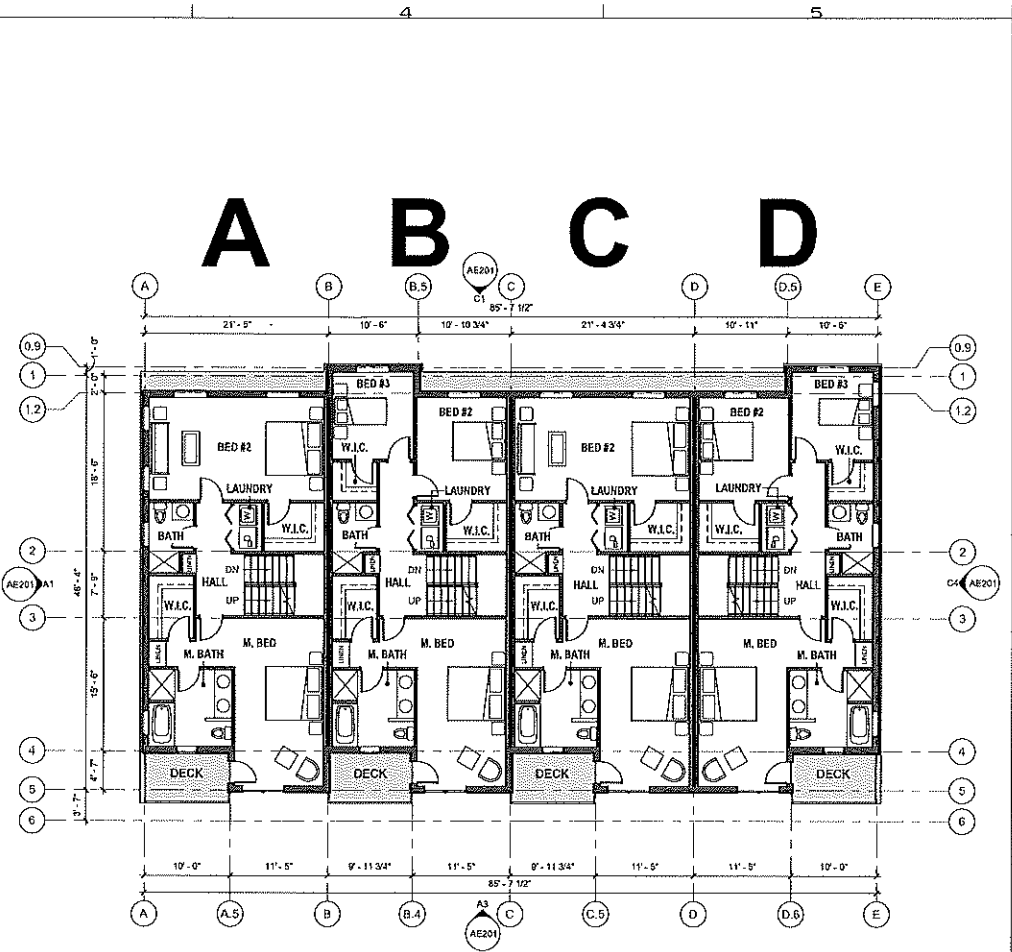
PRINCETON TERRACE
 8377 SOUTH DURHAM STREET SANDY, UTAH



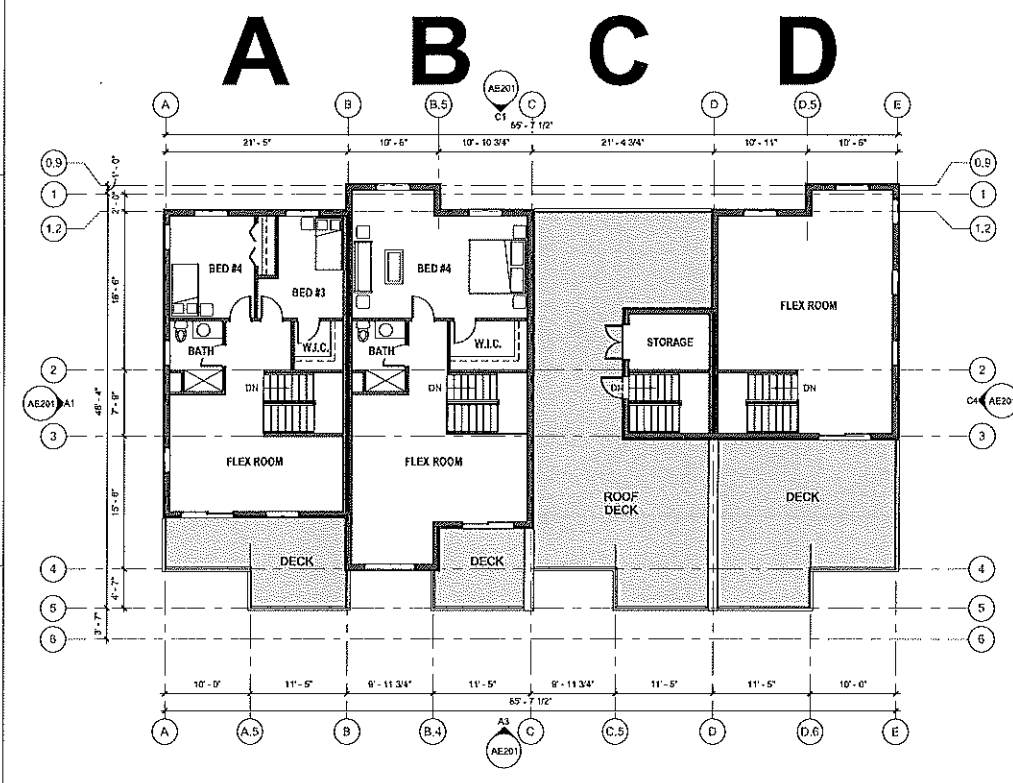
Preliminary
 Site Plan



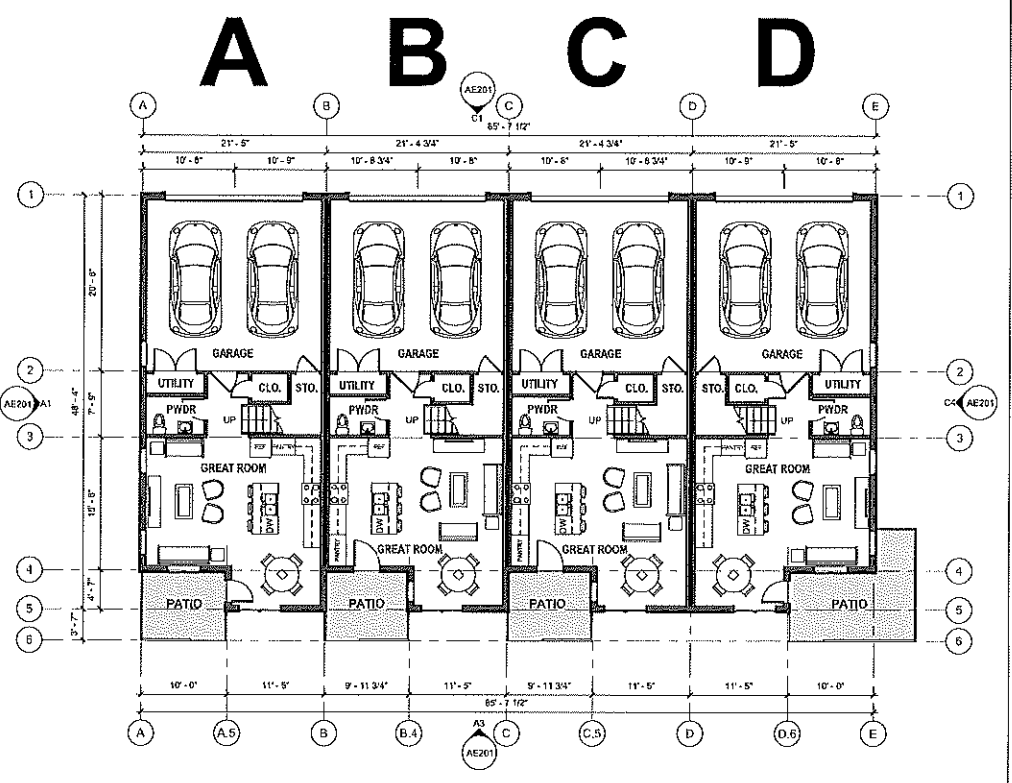
C1 ROOF PLAN
1/8" = 1'-0"



C3 SECOND LEVEL FLOOR PLAN
1/8" = 1'-0"



A1 THIRD LEVEL FLOOR PLAN
1/8" = 1'-0"



A3 MAIN LEVEL FLOOR PLAN
1/8" = 1'-0"

NOT FOR CONSTRUCTION

method studio
300 oxden avenue
suffolk county, virginia 24101
phone: (804) 632-4422

P · R · O · C · E · E · S · S
3055 A, green street
suffolk county, virginia 24109
p.043.006.0516

THE DESIGNER HAS PREPARED THESE PLANS TO THE BEST OF HIS KNOWLEDGE AND BELIEVES THEM TO BE CORRECT AND COMPLETE. THE DESIGNER DOES NOT WARRANT OR GUARANTEE THE ACCURACY OR COMPLETENESS OF THESE PLANS. THE DESIGNER SHALL NOT BE RESPONSIBLE FOR ANY ERRORS OR OMISSIONS IN THESE PLANS.

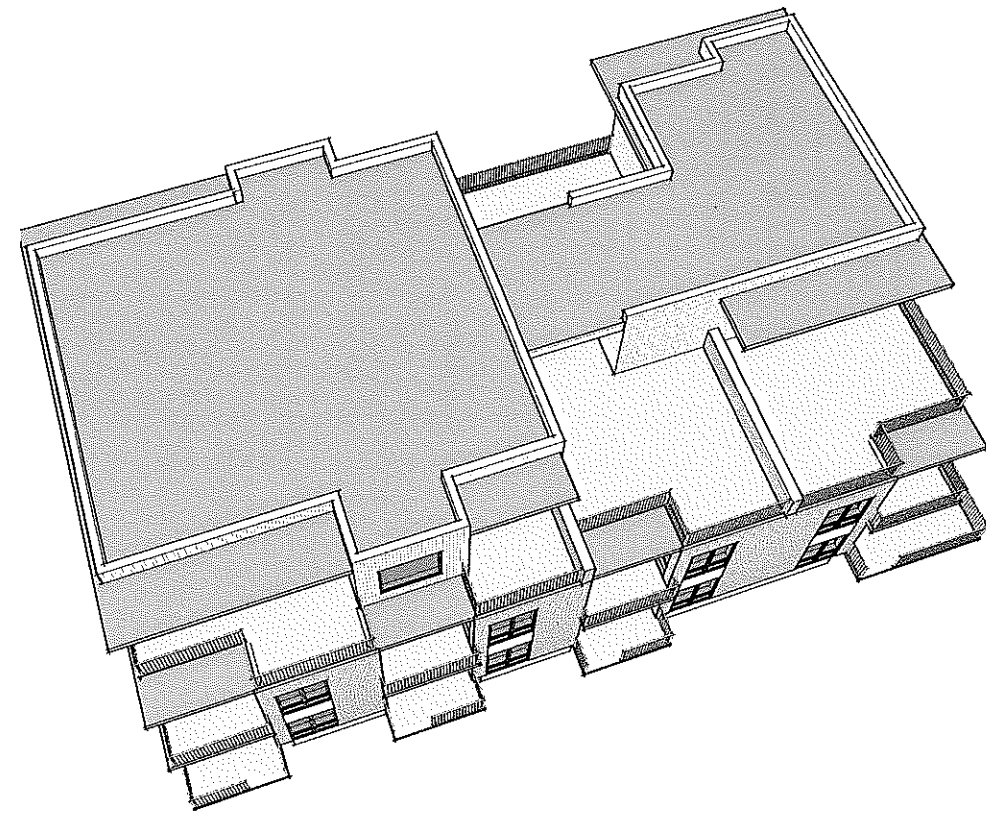
project:
PRINCETON
TERRACE

DATE: 07.01.2019

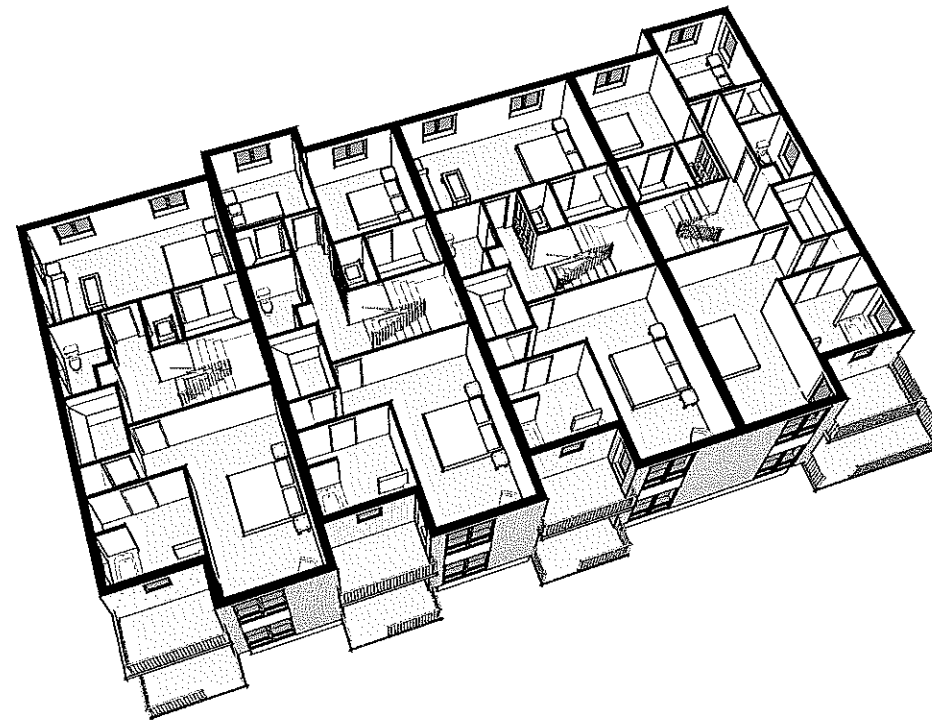
revisions:

title:
4-Plex Floor Plans

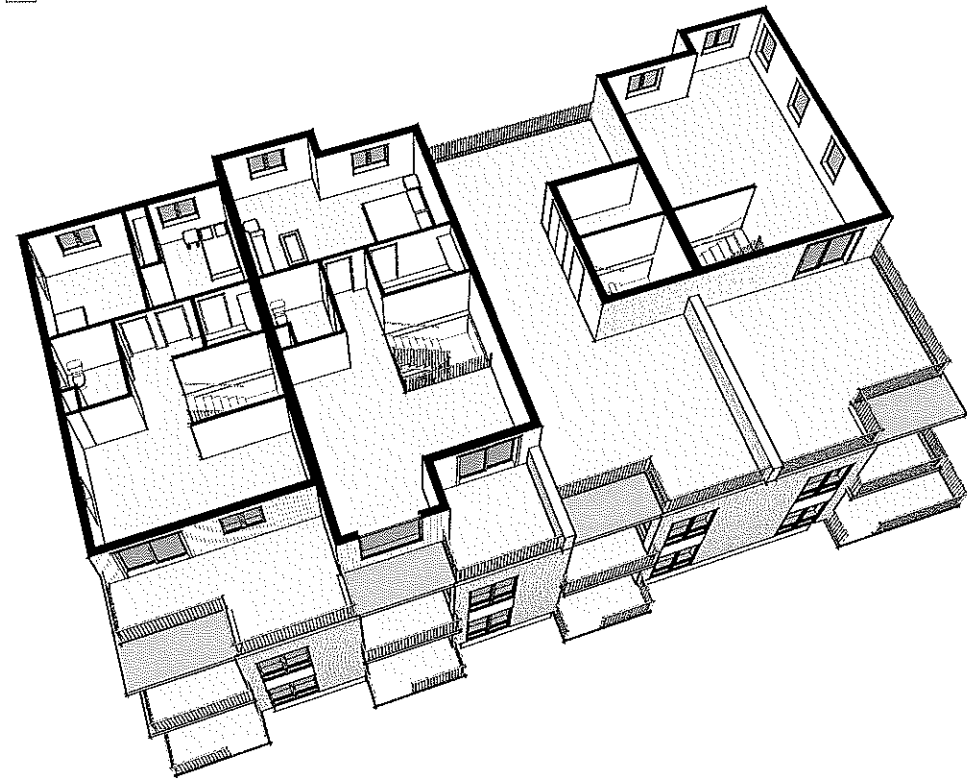
sheet:
AE101



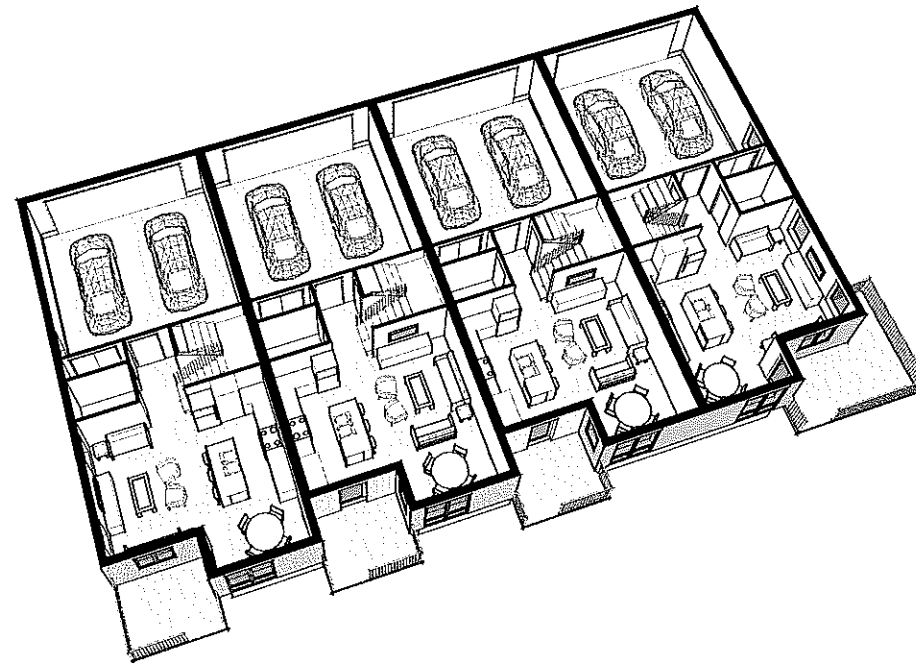
C1 ROOF VIEW



C3 SECOND LEVEL CUTAWAY VIEW



A1 THIRD LEVEL CUTAWAY VIEW



A3 MAIN LEVEL CUTAWAY VIEW

IN LETTA PROFESSIONAL SEAL WITH NUMBER AND DATE
 AFTER THE SEALING IS MADE AND THE SEAL IS
 FOR CONSTRUCTION PURPOSES ONLY. OTHERWISE VOID.

**NOT FOR
 CONSTRUCTION**

method studio
 360 aspen avenue
 20111 irvine city, u.s.a. 92614
 phone: (949) 532-4422

P · R · O · C · E · S · S
 3905 e. grace street
 92614 irvine, u.s.a. 92614
 p. 949 996 0876

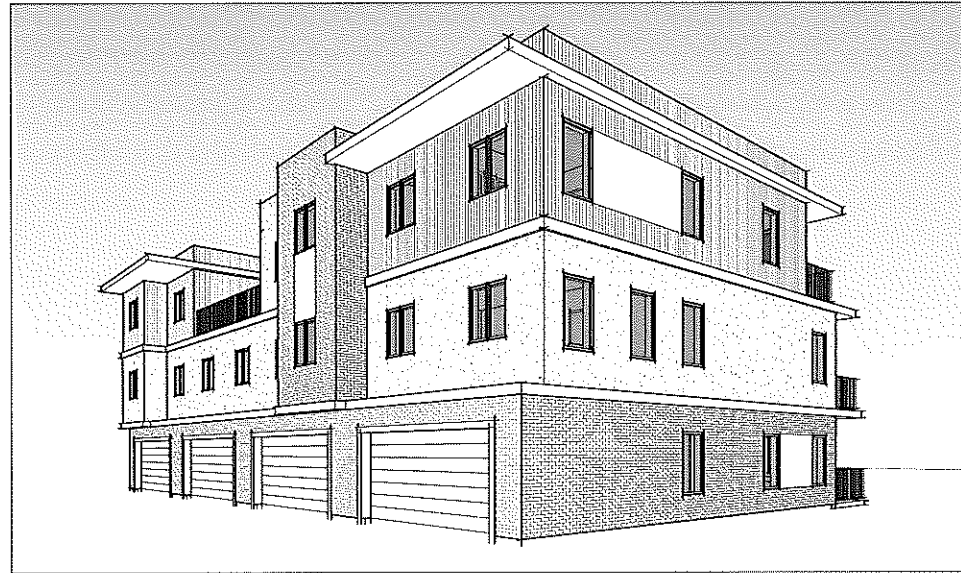
THESE DOCUMENTS ARE THE PROPERTY OF METHOD STUDIO
 AND ARE NOT TO BE REPRODUCED OR COPIED
 WITHOUT THE WRITTEN PERMISSION OF METHOD STUDIO.
 IN CASE OF ANY DISCREPANCY BETWEEN THESE
 DOCUMENTS AND THE ORIGINAL DRAWINGS, THE
 ORIGINAL DRAWINGS SHALL PREVAIL.

project:
 PRINCETON
 TERRACE

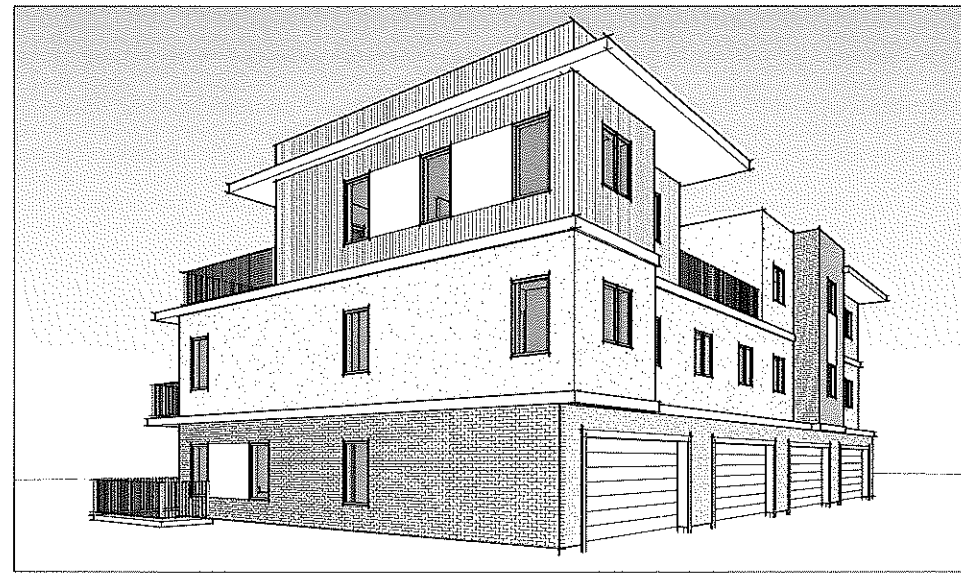
project: 18.0580
date: 07.01.2019
revisions:

title:
**4-Plex
 Interior
 Views**

sheet:
AE102



C1 NORTHWEST CORNER VIEW



C3 NORTHEAST CORNER VIEW



A1 SOUTHWEST CORNER VIEW



A3 SOUTHEAST CORNER VIEW

THIS IS A PRELIMINARY DESIGN AND NOT FOR CONSTRUCTION. THE ARCHITECT ASSUMES NO LIABILITY FOR THE ACCURACY OF THE INFORMATION CONTAINED HEREIN. THE ARCHITECT'S RESPONSIBILITY IS LIMITED TO THE DESIGN OF THE BUILDING AS SHOWN ON THESE PLANS.

**NOT FOR
CONSTRUCTION**

methodstudio
360 apple avenue
salt lake city, utah 84101
phone: (801) 532-4422

P · R · O · C · E · E · S · S
395 s. green street
salt lake city, utah 84103
p. 801.955.9576

THE ARCHITECT ASSUMES NO LIABILITY FOR THE ACCURACY OF THE INFORMATION CONTAINED HEREIN. THE ARCHITECT'S RESPONSIBILITY IS LIMITED TO THE DESIGN OF THE BUILDING AS SHOWN ON THESE PLANS.

project:
PRINCETON
TERRACE

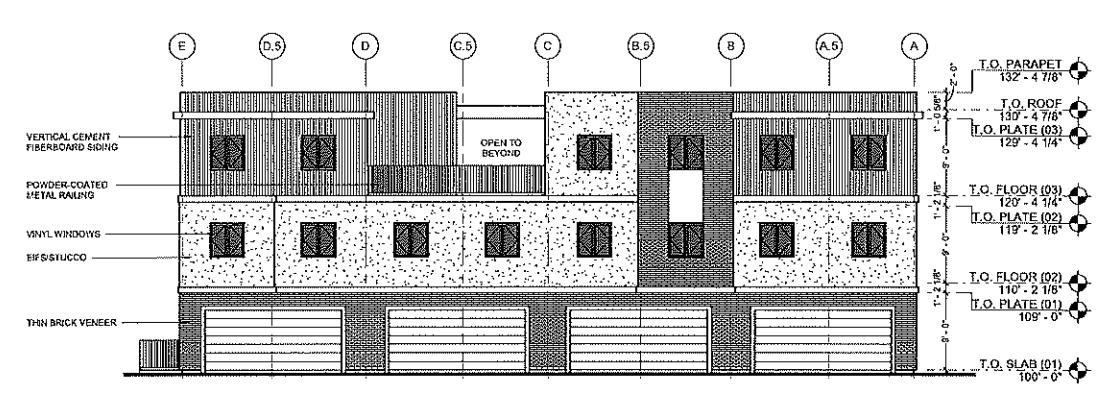
project: 18-0680
date: 07.02.2019

revisions:

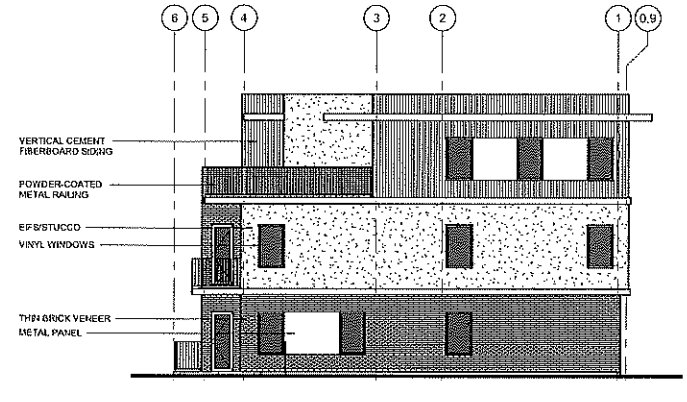
title:
**4-Plex
Exterior
Views**

sheet:
AE200

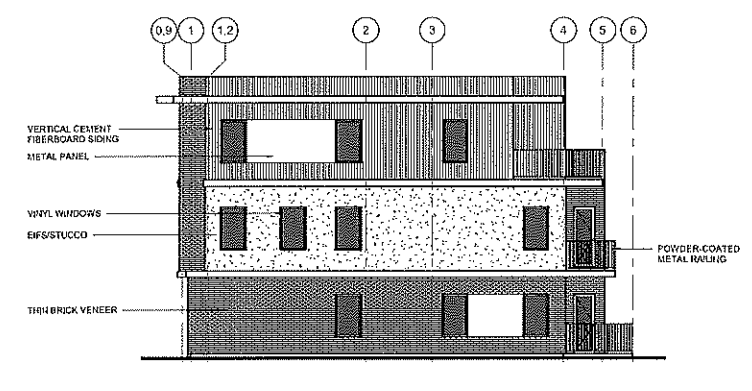
UNLESS INDICATED OTHERWISE, ALL DIMENSIONS ARE TO FACE UNLESS NOTED OTHERWISE.
NOT FOR CONSTRUCTION
method studio
 360 ASPEN AVENUE
 20111 PARK CITY, UTAH 84101
 PHONE: (801) 532-4422
P · R · O · J · E · C · T · S
 305 E. GRACE STREET
 SALT LAKE CITY, UTAH 84103
 P-801.596.0164



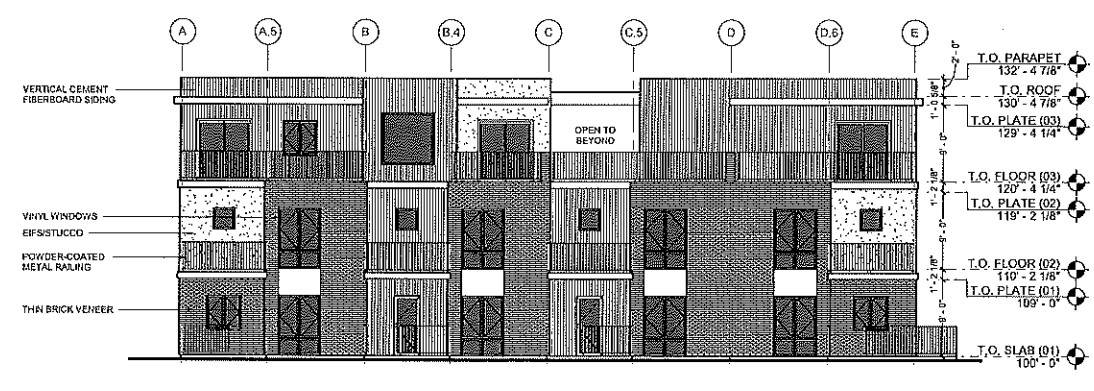
C1 REAR (GARAGE) ELEVATION
 1/8" = 1'-0"



C4 RIGHT (SIDE) ELEVATION
 1/8" = 1'-0"



A1 LEFT (SIDE) ELEVATION
 1/8" = 1'-0"



A3 FRONT (PATIO) ELEVATION
 1/8" = 1'-0"

project:
 PRINCETON
 TERRACE

project: 18-068b
date: 07.01.2019
revisions:

title:
4-Plex
Exterior
Elevations

sheet:
AE201





Stanford Court Condominiums Building Photos



Stanford Court architecture is based on the elevation of an historic brownstone located in the neighborhood on 900 East at 500 South.

Stanford Court Condominiums Building Photos

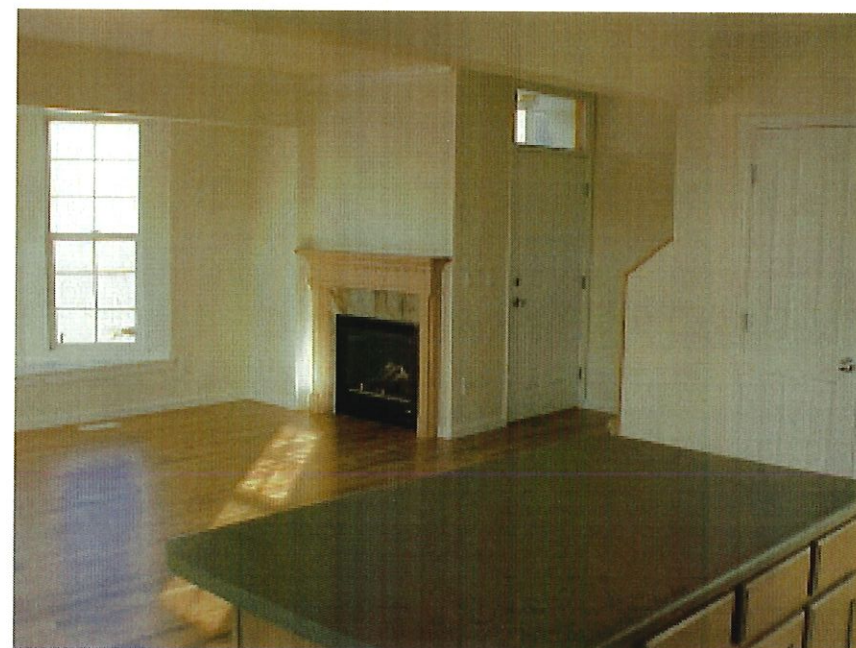


Stanford Court Condominiums at substantial completion phase. Light Rail construction is proceeding along 400 South in front of the development parcel.

Stanford Court Condominiums Building Photos



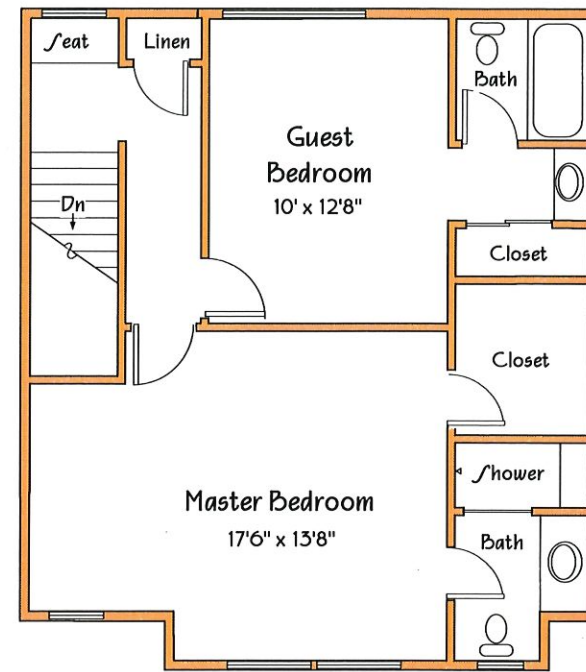
Interior Photos of
the Townhomes



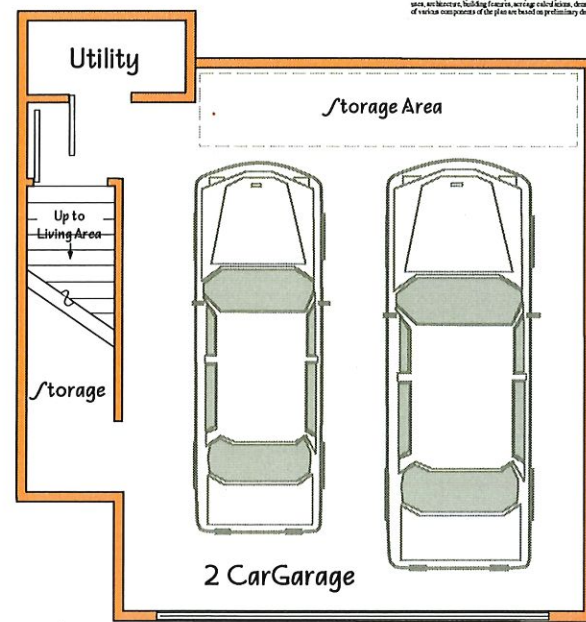
Stanford Court Condominiums

- Floorplan •

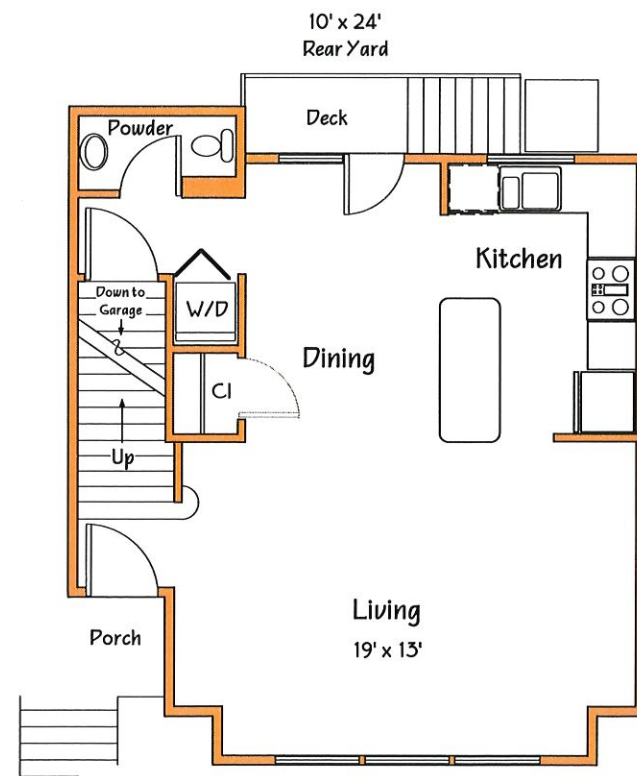
2 Bedroom Townhome



Upper Floor
2 Bedroom Townhome
Stanford Court



Ground Level
2 Bedroom Townhome
Stanford Court



Main Level
2 Bedroom Townhome
Stanford Court

The information depicted on this plan is preliminary in nature and is subject to modification and revision. All load areas, wall thickness, building features, average ceiling heights, door swing, window, fire doors and other architectural or structural components of the plan are based on preliminary design, specifications and design parameters.