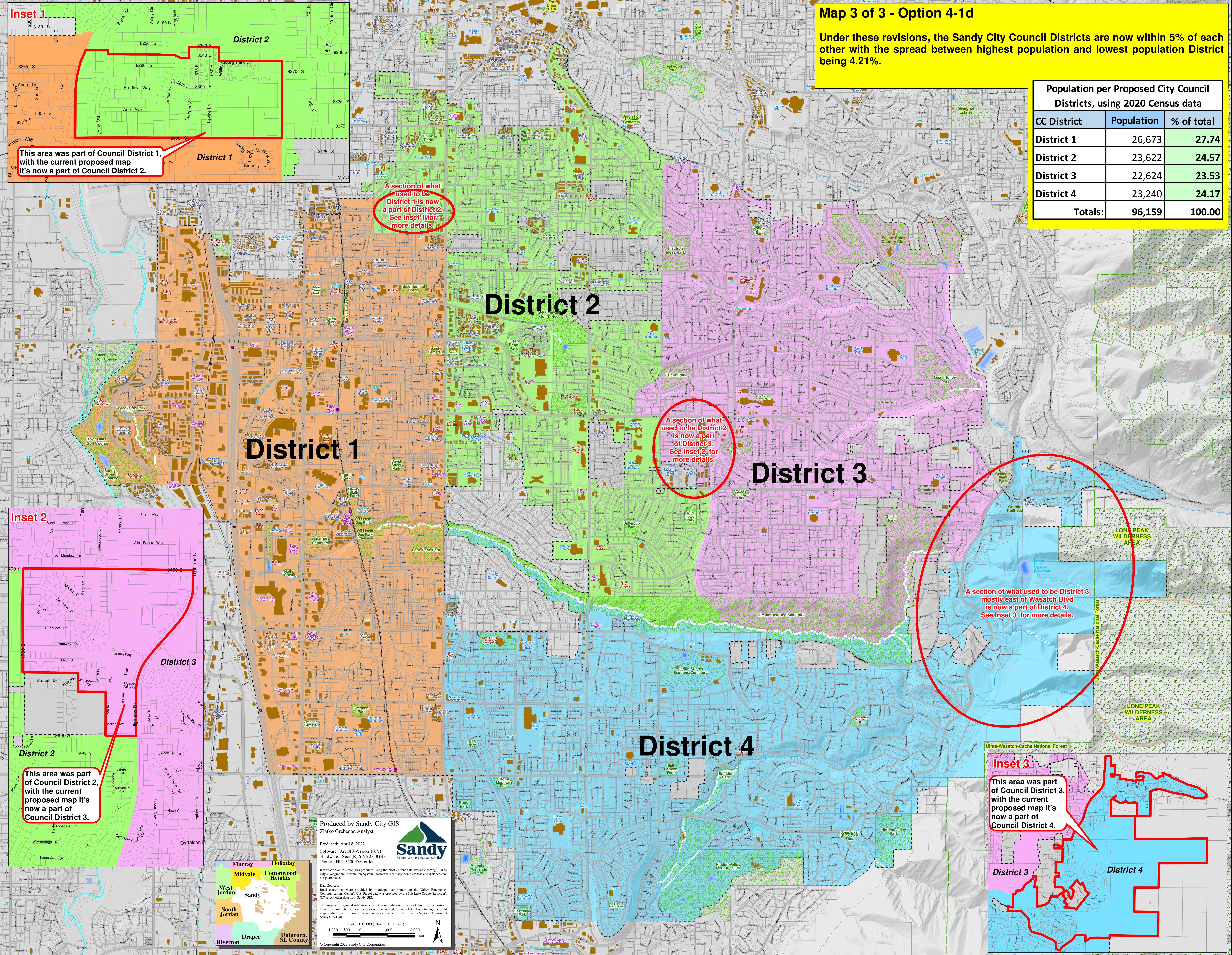


Sandy City, Utah City Council Proposed Districts Option 4-1d

Map 3 of 3 - Option 4-1d

Under these revisions, the Sandy City Council Districts are now within 5% of each other with the spread between highest population and lowest population District being 4.21%.

Population per Proposed City Council Districts, using 2020 Census data		
CC District	Population	% of total
District 1	26,673	27.74
District 2	23,622	24.57
District 3	22,624	23.53
District 4	23,240	24.17
Totals:	96,159	100.00



Inset 1

This area was part of Council District 1, with the current proposed map it's now a part of Council District 2.

A section of what used to be District 1 is now a part of District 2. See Inset 1 for more details.

A section of what used to be District 2 is now a part of District 3. See Inset 2 for more details.

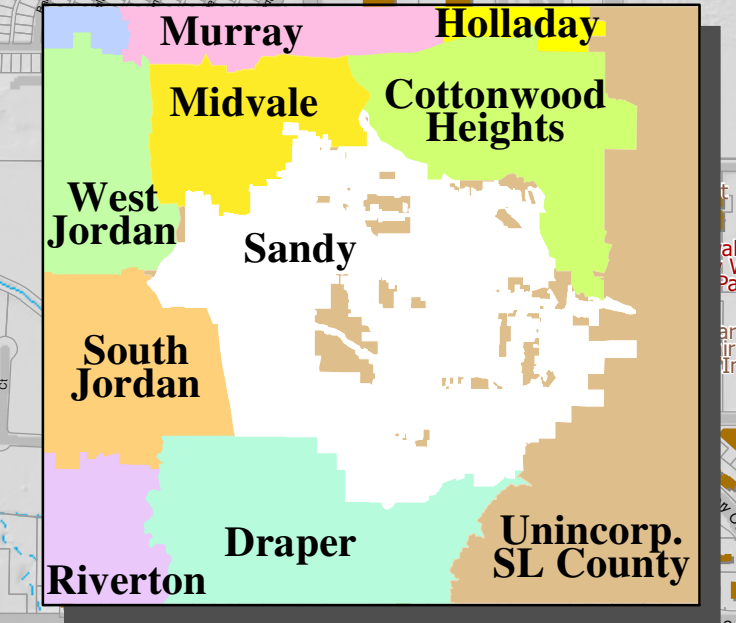
A section of what used to be District 3 mostly east of Wasatch Blvd is now a part of District 4. See Inset 3 for more details.

Inset 2

This area was part of Council District 2, with the current proposed map it's now a part of Council District 3.

Inset 3

This area was part of Council District 3, with the current proposed map it's now a part of Council District 4.



Produced by Sandy City GIS
Zlanko Grebanar, Analyst

Produced: April 8, 2022
Software: ArcGIS Version 10.7.1
Hardware: Xeon(R) 6126 2.60GHz
Plotter: HPT3500 DesignJet

Data Sources:
Road centerlines were provided by municipal contributors to the Valley Emergency Communications Center's GIS. Parcel data was provided by the Salt Lake County Recorder's Office. All other data from Sandy GIS.

This map is for general reference only. Any reproduction or sale of this map, or portions thereof, is prohibited without the prior written consent of Sandy City. For a listing of current map products, or for more information, please contact the Information Services Division at Sandy City Hall.

Scale: 1:12,000 (1 inch = 1000 Feet)

1,000 500 0 1,000 2,000 Feet

© Copyright 2022 Sandy City Corporation