

ORDINANCE # 19-14

AN ORDINANCE AMENDING THE SANDY CITY GENERAL PLAN BY MAKING REVISIONS TO THE TRAILS MASTER PLAN; AND PROVIDING AN EFFECTIVE DATE.

WHEREAS, the City has the authority pursuant to Sections 10-9a-401 et seq., Utah Code Ann. 2012, as amended, to make, adopt, amend, extend and add to a general plan for the physical development of the municipality; and

WHEREAS, the Sandy City Parks and Recreation Department has requested to review a proposed amendment to the Sandy City General Plan by adding a trail type and amending maps to revise trail types and locations in the Trails Master Plan; and

WHEREAS, the Planning Commission has reviewed the amendment to the Sandy City General Plan at a public hearing held on April 18, 2019, notice of which hearing was posted in Sandy City Hall, Sandy Parks & Recreation, the Salt Lake County Library-Sandy, the Sandy City Website - <http://www.sandy.utah.gov>, and the Utah Public Notice Website - <http://pmn.utah.gov> on April 2, 2019, and published in the Salt Lake Tribune on April 4, 2019, and forwarded the Plan, with a positive recommendation, to the City Council; and

WHEREAS, a public hearing was held on May 21, 2019 before the City Council to discuss the amendment to the Sandy City General Plan, notice of which hearing was posted in Sandy City Hall, Sandy Parks & Recreation, the Salt Lake County Library-Sandy, the Sandy City Website - <http://www.sandy.utah.gov>, and the Utah Public Notice Website - <http://pmn.utah.gov> on May 2, 2019, and published in the Salt Lake Tribune, on May 7, 2019; and

WHEREAS, the City Council has determined that it would be in the best interests and promote the welfare of the City and its residents by amending the City's General Plan by adding the trail types and revising various mapped trail locations and types throughout the City;

NOW, THEREFORE, BE IT ORDAINED by the City Council of Sandy City as follows:

Section 1. The Trails Master Plan of the Sandy City General Plan is hereby amended by adding the trail types and amending the trails maps, as set forth in **Exhibit "A"**. Such update to the City's General Plan is attached to this ordinance and made a part hereof.

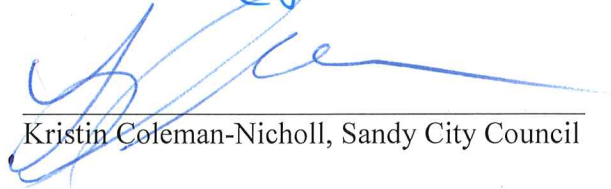
Section 2. All former ordinances or parts thereof conflicting or inconsistent with the provisions of this ordinance or of the Code hereby adopted are hereby repealed.

Section 3. The provisions of this ordinance shall be severable; and if any provision

thereof, or the application of such provision under any circumstances is held invalid, it shall not affect any other provision of this ordinance, or the application in a different circumstance.

Section 4. This ordinance shall become effective upon the publication of a summary thereof.

PASSED AND APPROVED this 21<sup>st</sup> day of May, 2019.

  
Kristin Coleman-Nicholl, Sandy City Council

PRESENTED to the Mayor of Sandy City this 28<sup>th</sup> day of May, 2019.

APPROVED by the Mayor of Sandy City this 28<sup>th</sup> day of May, 2019.

  
Kurt Bradburn, Mayor

ATTEST:

  
City Recorder



RECORDED this 28 day of May, 2019.

PUBLISHED this 30 day of May, 2019.

**Exhibit "A"**

(Trails Master Plan-amended pages)

---

---

# Chapter 4 Design

---

The guidelines that are in this chapter are intended to provide guidance in the design and construction of trails within Sandy City. There are additional references found in the appendix to this plan that may be used to supplement these standards. It is the intent of this section to provide a consistent standard so that those using them can understand and better interact with the trails.

## 4.1 Trail Types

The following brief definitions are offered in this plan for the purpose of familiarizing trail users with the types of trails offered in Sandy City. These designations are also used on the Sandy City Trails map in order to designate their locations and relationships to the trail network as a whole.

### 4.1.1 Type A - Walking (Historic Trails and Sidewalks)

This type of trail is a paved surface that is typically found within an urban setting, either roadside or within a residential community. Historic trails follow routes that travel through areas of historic significance within Sandy.

Trails may also include sidewalks as part of the overall network. Older sidewalks are typically four (4) feet wide. Sidewalks built after 2003 are a minimum of five (5) feet wide and sidewalks located against a curb are a minimum of six (6) feet wide. Refer to City Standard Details CD-04, CG-02, and MS-01 (for historic walking tour and trail routes)



The Sandy Museum provides information on the Historic Sandy Walking Tour

### 4.1.2 Type B - Bike Lanes, and Bike Routes, and Neighborhood Byways

This type of trail is a part of the roadway and is either separated from or shared with other traffic by striping, signage or a combination of the two. Bicycle lanes serve the needs of all types of cyclists in urban and suburban areas by providing them with a dedicated travel lane within the street space. The Salt Lake County Planning & Development Services Cooperative County Plan Bikeway Design Manual should also be referenced.

- A bike lane is a dedicated guideway within the road for cyclists to use. It has specific design standards and legal rights for cyclists. These lanes generally require more right of way, design considerations, and enforcement. They also provide a safer and more visible route and space for cyclists.



Bike Lane along Wasatch Blvd

- Bike routes are on roads that are designated as good cycling routes, but may not have fully dedicated bike lanes. They can be signed and mapped but do not include the same design guidelines or legal rights as bike lanes. Residential and collector roads with shoulders are good candidates for bike routes.
- Neighborhood byways are low-speed and low-volume shared roadways. They are typically used to provide access and connections to other mapped bike trails. Signage and striping may be used to mark mapped byways.



Bike Route along Sego Lily Drive

#### 4.1.3 Type C - Equestrian

Equestrian trails are intended to accommodate equestrians and their horses, but may also serve as a path for pedestrians and cyclists. Equestrian trails are always unpaved, soft surface trails, and therefore limit the use by design to horses, walkers, joggers, and mountain bikes. Dimple Dell park is the only designated public equestrian use facility within Sandy City limits and is managed by Salt Lake County. Therefore equestrian trails within Sandy City should reference Salt Lake County's Dimple Dell Regional Park Master Plan. There are limited trails that access the park from communities such as Bell Canyon Acres Subdivision and trail heads such as the NW corner of Lone Peak Park. City Standard detail TR-02 should be referenced for construction standards.



Equestrian use in Dimple Dell Park

#### 4.1.4 Type D - Mountain and Hiking

Mountain and hiking trails are single track trails constructed dirt or other soft surface material of a natural nature. They are typically located in the canyons that run through the City or on the mountain side. Therefore they will have some steep terrain and may be difficult to use. And due to their nature and location of these trail types, you may encounter wildlife. Typical wildlife may encounter would include, deer, mountain lions, and snakes. Refer to City Standard Detail TR-02.

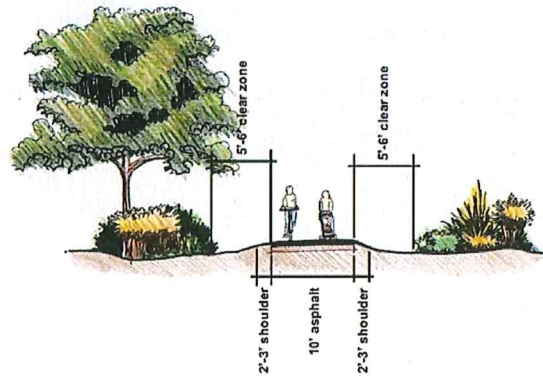


Bonneville Shoreline Trail

#### 4.1.5 Type E - 10-foot Multi-Purpose



This type of trail should accommodate a wide variety of users, from cyclists and pedestrians, to in-line skaters and people with strollers or dogs. The surface material on these trails must therefore be hard, smooth, and durable with a minimum width of ten (10) feet. They may also have a soft surface running adjacent to it. Refer to City Standard Details TR-01, TR-03, & TR-04.



**Elevated Multi-use Trail**

**4.1.6 Type F – Park**

**Multi-use Trail Profile**

**Walking and Jogging Trails**

This type of trail typically accommodates a wide variety of users, from cyclists and pedestrians, to in-line skaters and people with strollers or dogs. They are typically developed with all new parks and have been integrated into most existing parks. These trails are typically ten (10) feet wide and constructed of asphalt or concrete. Refer to City Standard Detail TR-01.



**Walking & Jogging Trail in Bicentennial Park**

**4.1.7 Type G - Secondary/Neighborhood Access**

This type of trail provides an alternative route from neighborhoods to other trail types and park facilities. They may also serve as connections between neighborhoods.

**4.1.8 Type H - Fire and Maintenance**

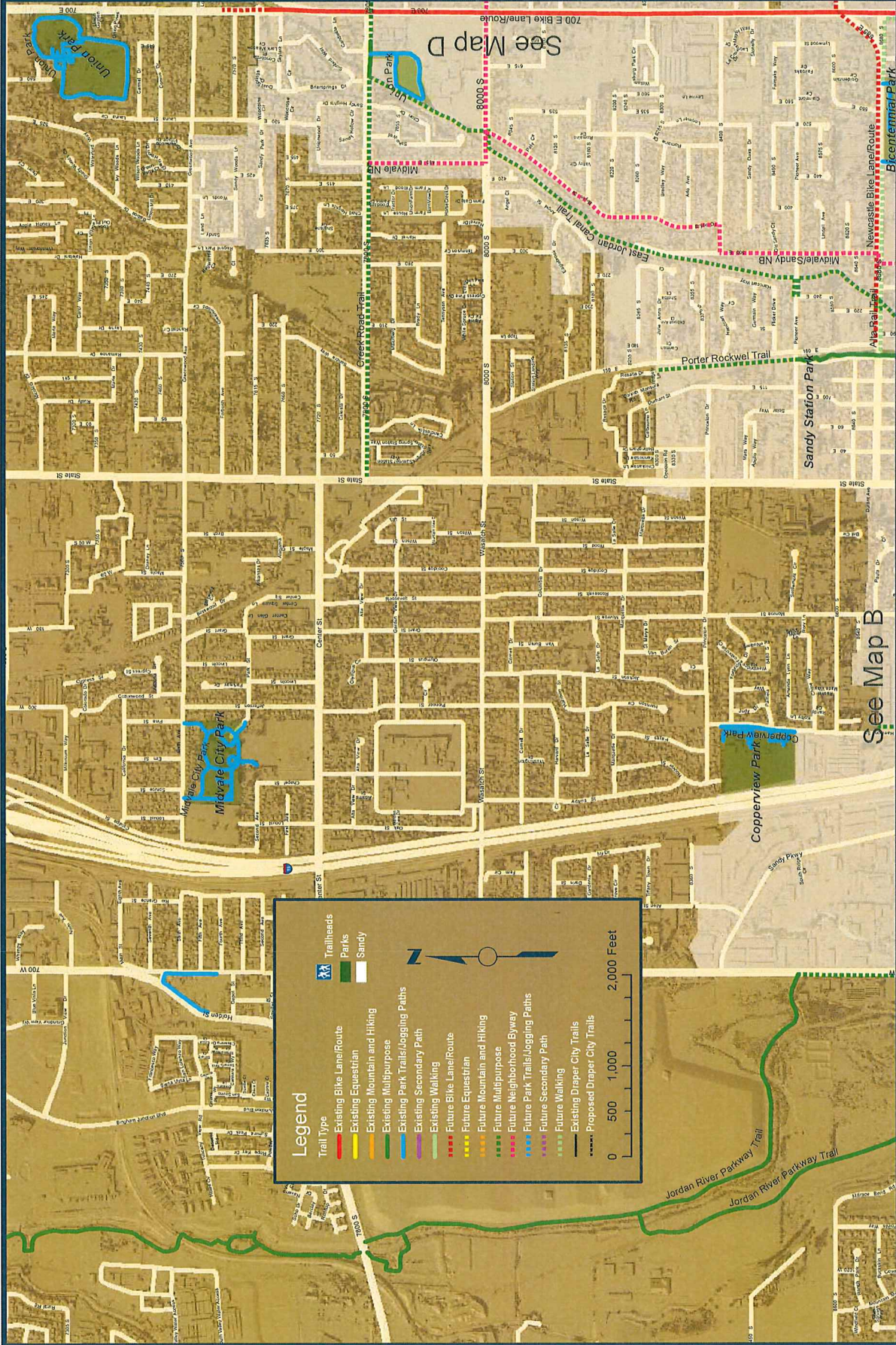
This type of trail requires construction to withstand emergency vehicle and maintenance access for weight as well as width.



**Secondary/Neighborhood Access at Quarry Bend**

**4.2 Amenities**

# Sandy City Trails Master Plan



**Legend**

**Trail Type**

- Existing Bike Lane/Route
- Existing Equestrian
- Existing Mountain and Hiking
- Existing Multipurpose
- Existing Park Trails/Jogging Paths
- Existing Secondary Path
- Existing Walking
- Future Bike Lane/Route
- Future Equestrian
- Future Mountain and Hiking
- Future Multipurpose
- Future Neighborhood Byway
- Future Park Trails/Jogging Paths
- Future Secondary Path
- Future Walking

**Trailheads**

- Sandy

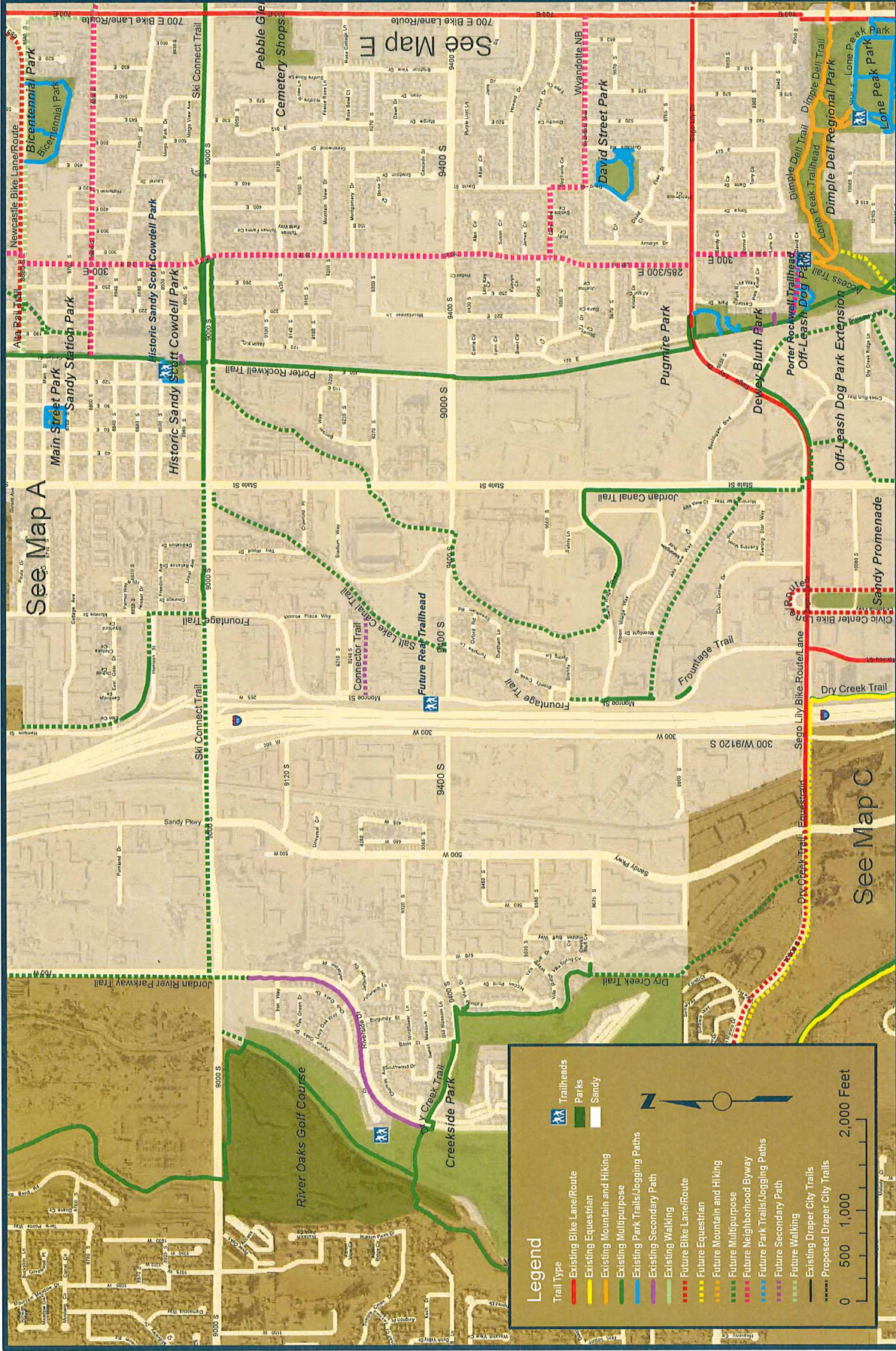
**Scale:** 0, 500, 1,000, 2,000 Feet

**North Arrow**

See Map D

See Map B

# Sandy City Trails Master Plan



See Map A

See Map E

See Map C

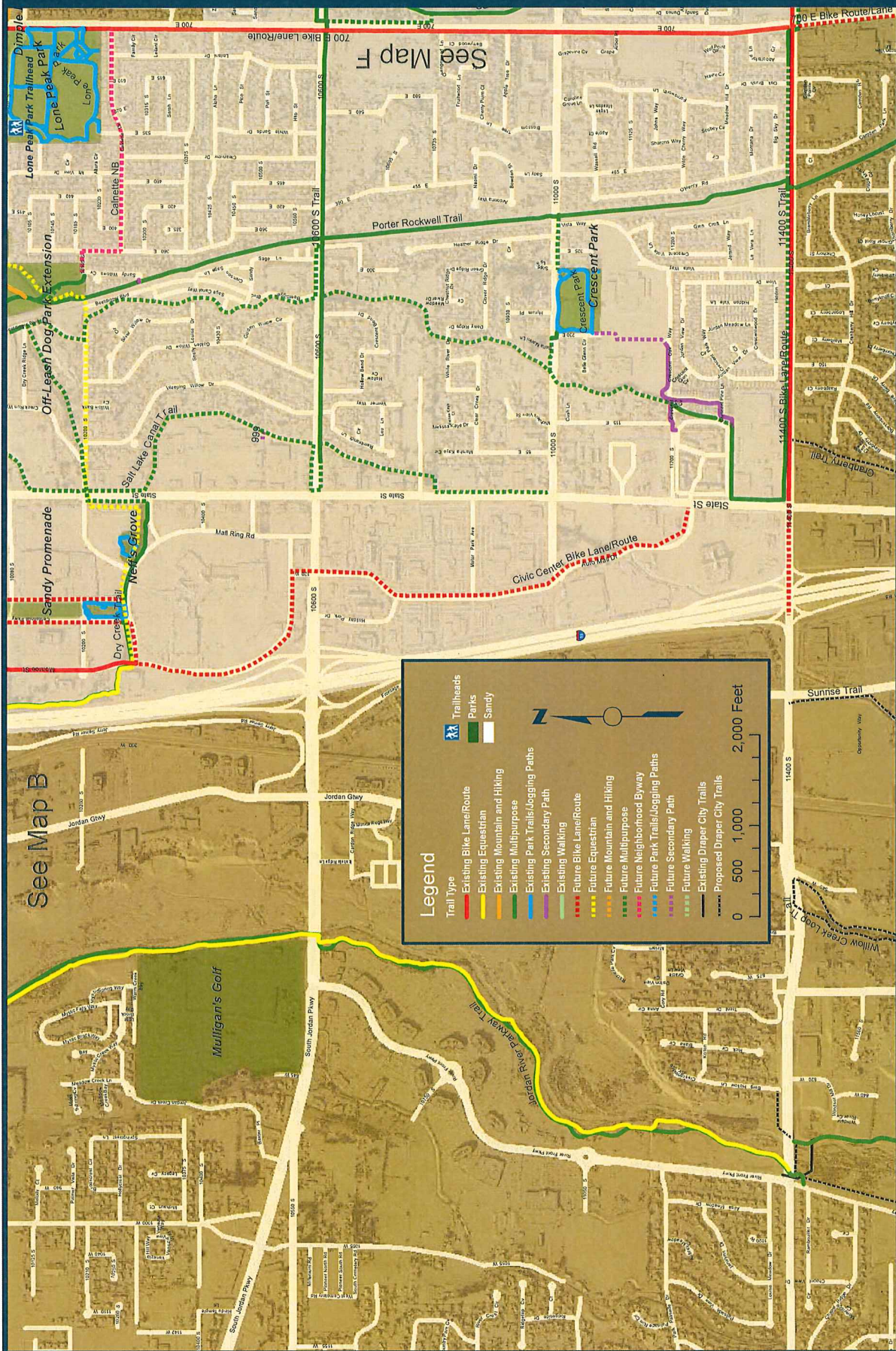
**Legend**

- Trailheads
- Parks
- Sandy
- Existing Bike Lane/Route
- Existing Equestrian
- Existing Mountain and Hiking
- Existing Multipurpose
- Existing Park Trails/Jogging Paths
- Existing Secondary Path
- Existing Walking
- Future Bike Lane/Route
- Future Equestrian
- Future Mountain and Hiking
- Future Multipurpose
- Future Neighborhood Byway
- Future Park Trails/Jogging Paths
- Future Secondary Path
- Future Walking
- Existing Draper City Trails
- Proposed Draper City Trails

0 500 1,000 2,000 Feet



# Sandy City Trails Master Plan



**Legend**

- Trailheads: Trailheads
- Parks: Parks
- Sandy: Sandy
- Trail Type:
  - Existing Bike Lane/Route
  - Existing Equestrian
  - Existing Mountain and Hiking
  - Existing Multipurpose
  - Existing Park Trails/Jogging Paths
  - Existing Secondary Path
  - Existing Walking
  - Future Bike Lane/Route
  - Future Equestrian
  - Future Mountain and Hiking
  - Future Multipurpose
  - Future Neighborhood Byway
  - Future Park Trails/Jogging Paths
  - Future Secondary Path
  - Future Walking
  - Existing Draper City Trails
  - Proposed Draper City Trails

Scale: 0, 500, 1,000, 2,000 Feet

North Arrow

See Map B

See Map F

Off-Leash Dog Park Extension

Lone Peak Trailhead

Lone Peak Park

Cajonette NB

Porter Rockwell Trail

1600 S Trail

700 E Bike Lane/Route

11000 S

1400 S Trail

1400 S Bike Lane/Route

Crescent Park

11000 S

11000 S

11000 S

11000 S

11000 S

11000 S

11000 S

11000 S

11000 S

Sandy Promenade

Dry Creek Trail

Next's Grove

10800 S

10800 S

10800 S

10800 S

10800 S

10800 S

10800 S

10800 S

10800 S

10800 S

10800 S

10800 S

10800 S

10800 S

10800 S

10800 S

10800 S

See Map B

See Map F

Off-Leash Dog Park Extension

Lone Peak Trailhead

Lone Peak Park

Cajonette NB

Porter Rockwell Trail

1600 S Trail

700 E Bike Lane/Route

11000 S

1400 S Trail

1400 S Bike Lane/Route

Crescent Park

11000 S

11000 S

11000 S

11000 S

11000 S

11000 S

11000 S

11000 S

11000 S

11000 S

11000 S

11000 S

11000 S

11000 S

11000 S

11000 S

11000 S

11000 S

11000 S

11000 S

11000 S

11000 S

11000 S

11000 S

See Map B

See Map F

Off-Leash Dog Park Extension

Lone Peak Trailhead

Lone Peak Park

Cajonette NB

Porter Rockwell Trail

1600 S Trail

700 E Bike Lane/Route

11000 S

1400 S Trail

1400 S Bike Lane/Route

Crescent Park

11000 S

11000 S

11000 S

11000 S

11000 S

11000 S

11000 S

11000 S

11000 S

11000 S

11000 S

11000 S

11000 S

11000 S

11000 S

11000 S

11000 S

11000 S

11000 S

11000 S

11000 S

11000 S

11000 S

11000 S

See Map B

See Map F

Off-Leash Dog Park Extension

Lone Peak Trailhead

Lone Peak Park

Cajonette NB

Porter Rockwell Trail

1600 S Trail

700 E Bike Lane/Route

11000 S

1400 S Trail

1400 S Bike Lane/Route

Crescent Park

11000 S

11000 S

11000 S

11000 S

11000 S

11000 S

11000 S

11000 S

11000 S

11000 S

11000 S

11000 S

11000 S

11000 S

11000 S

11000 S

11000 S

11000 S

11000 S

11000 S

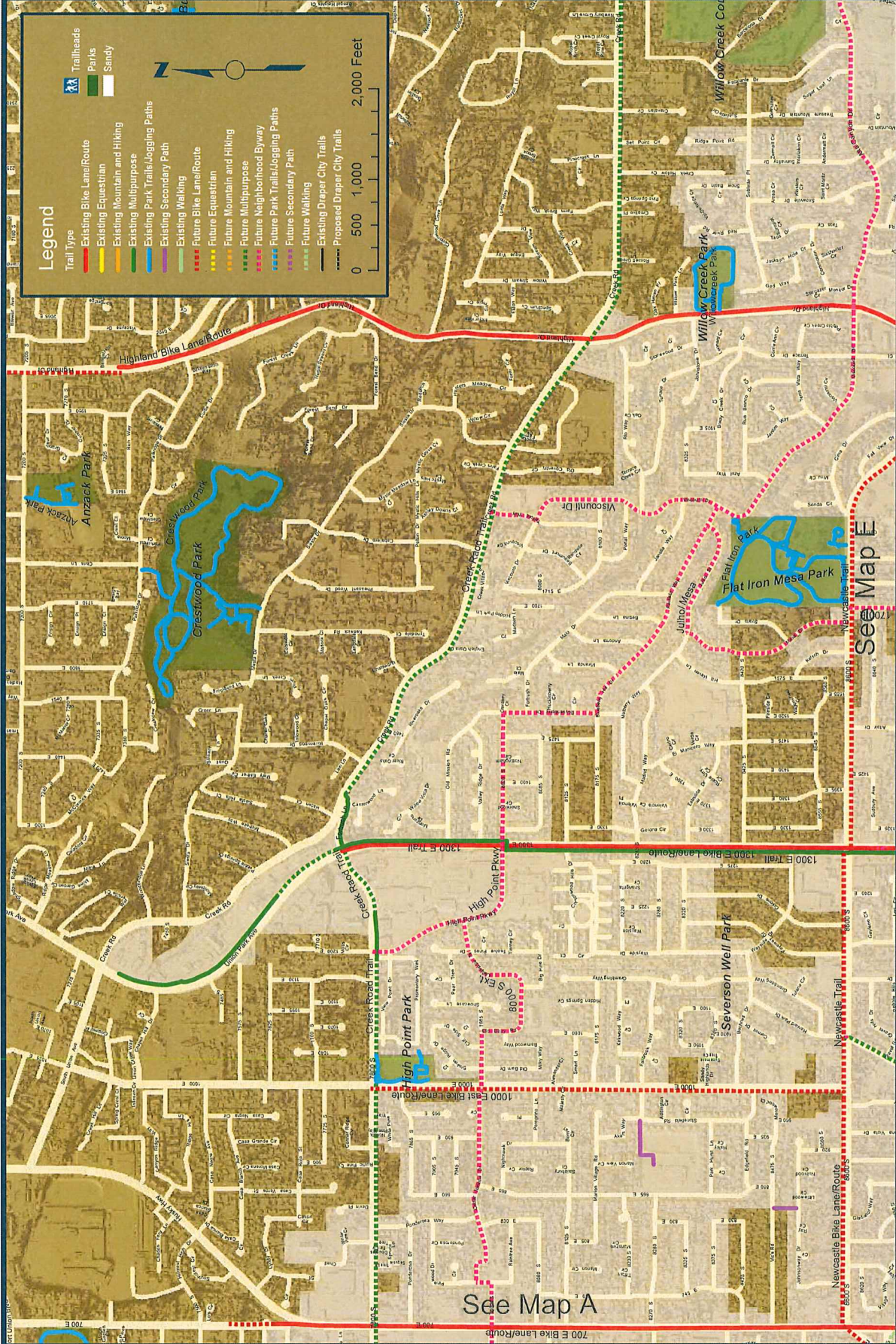
11000 S

11000 S

11000 S

11000 S

# Sandy City Trails Master Plan



**Legend**

**Trail Type**

- Existing Bike Lane/Route
- Existing Equestrian
- Existing Mountain and Hiking
- Existing Multipurpose
- Existing Park Trails/Jogging Paths
- Existing Secondary Path
- Existing Walking
- Future Bike Lane/Route
- Future Equestrian
- Future Mountain and Hiking
- Future Multipurpose
- Future Neighborhood Byway
- Future Park Trails/Jogging Paths
- Future Secondary Path
- Future Walking

**Trailheads**

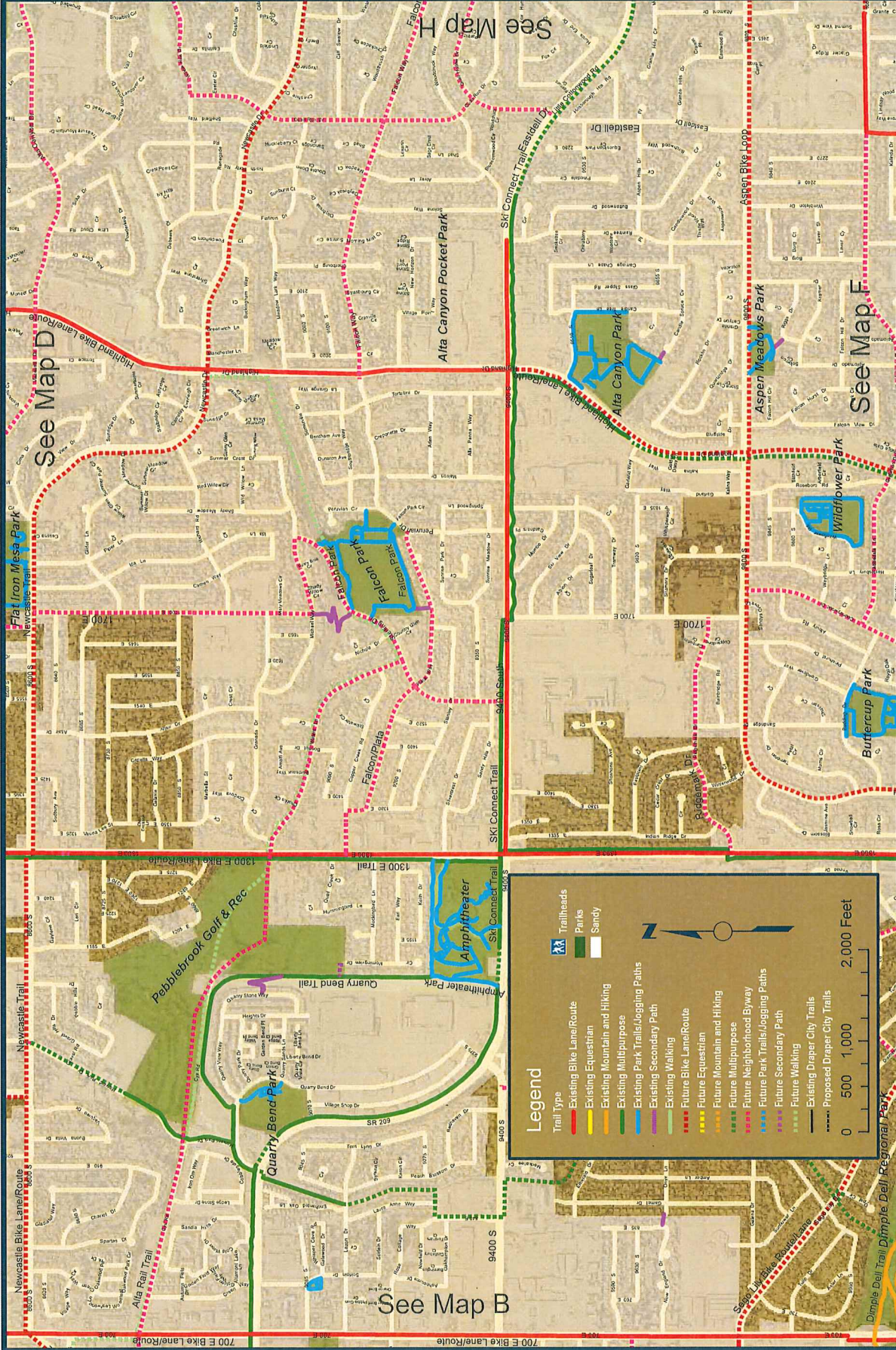
- Parks
- Sandy

**Scale:** 0, 500, 1,000, 2,000 Feet

See Map E

See Map A

# Sandy City Trails Master Plan

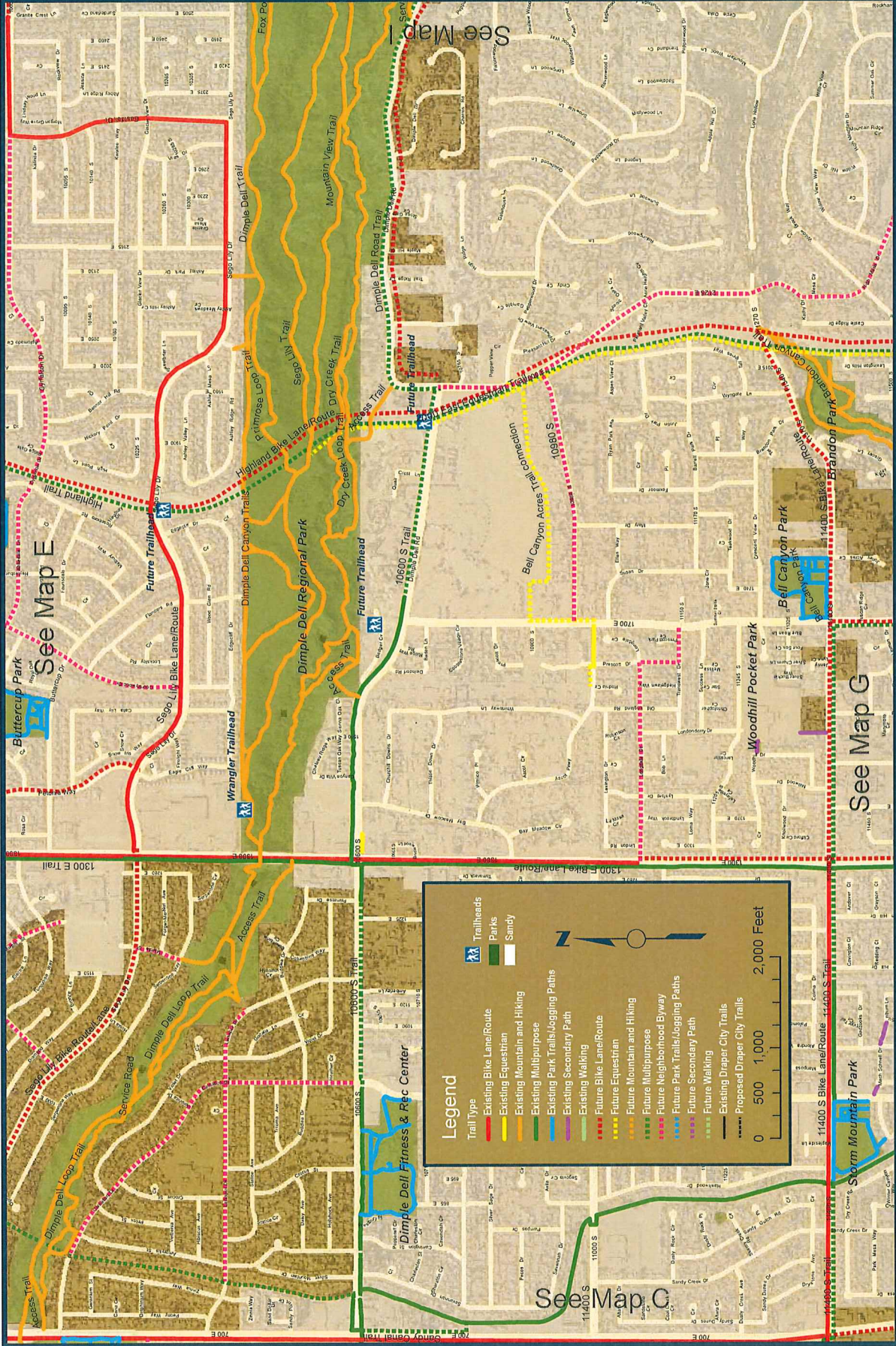


See Map B

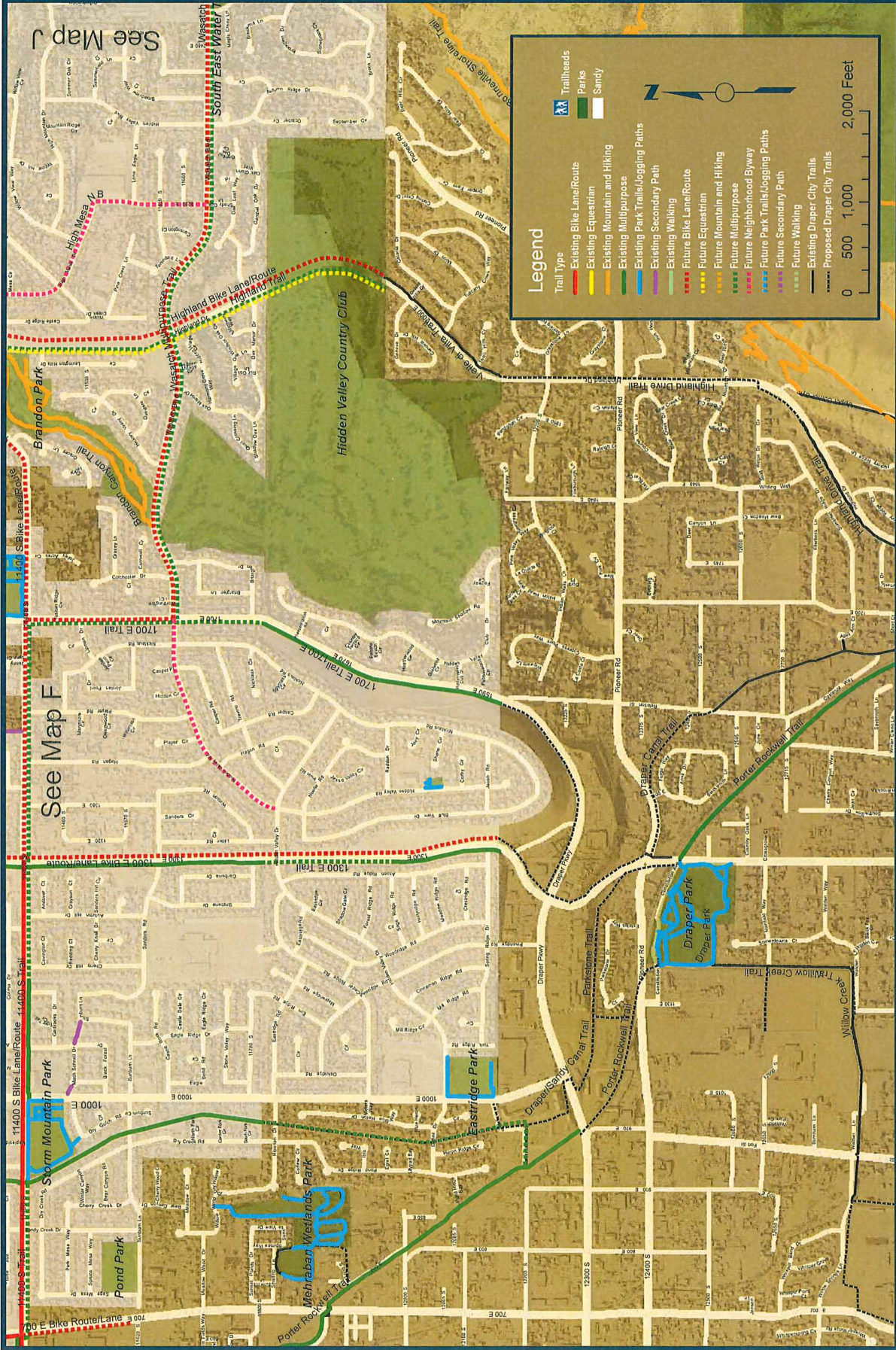
See Map D

See Map F

# Sandy City Trails Master Plan



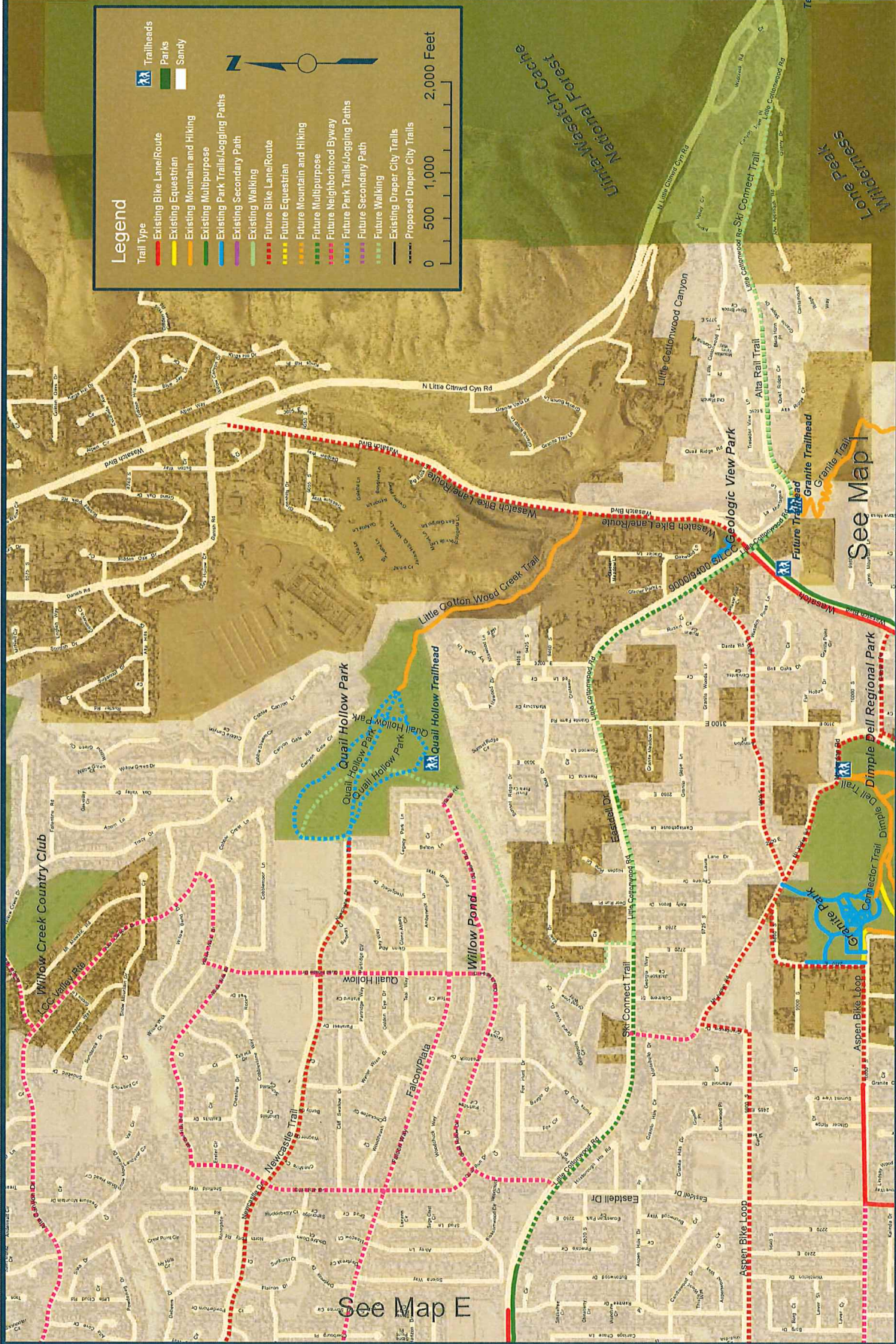
# Sandy City Trails Master Plan



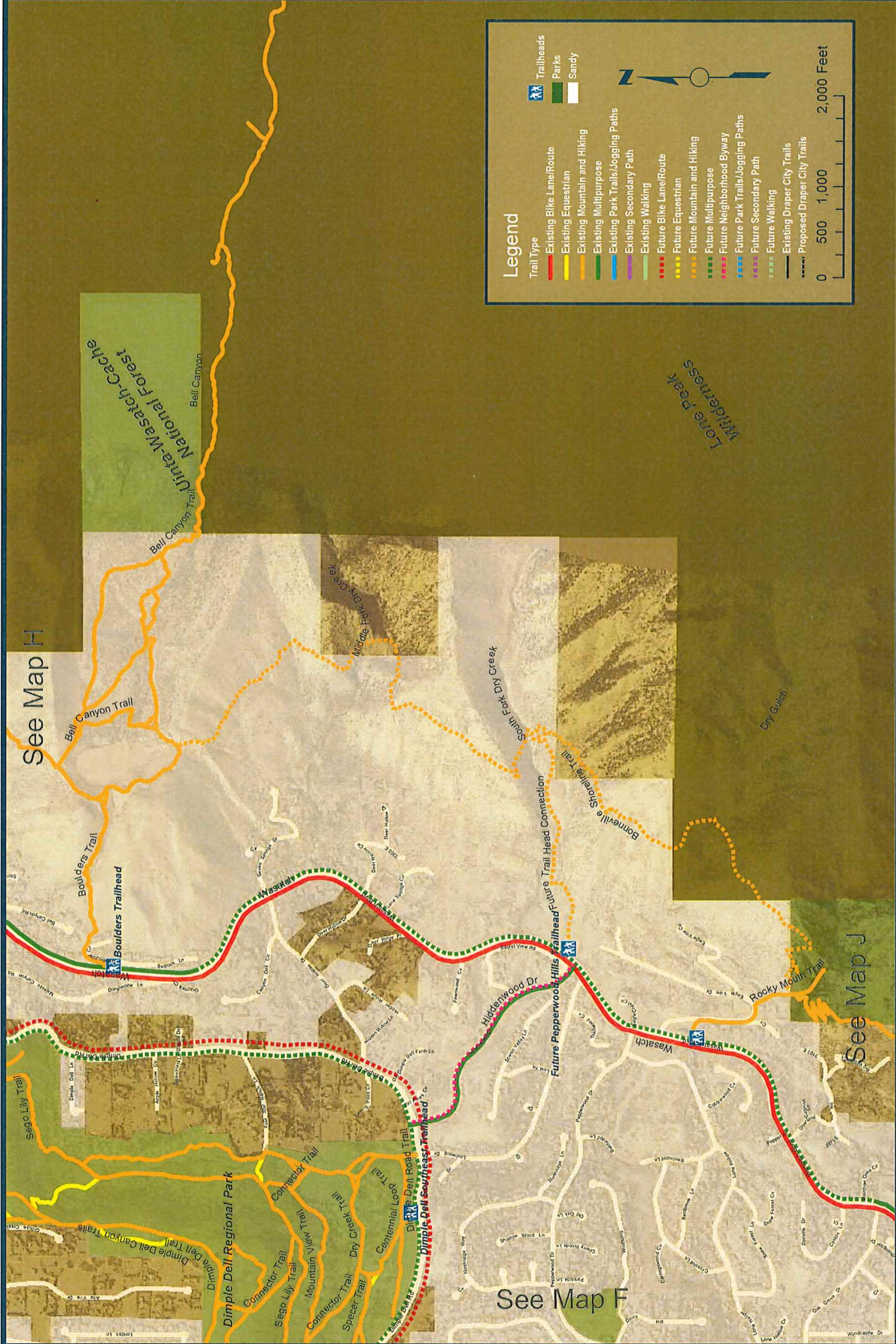
See Map J

See Map F

# Sandy City Trails Master Plan



# Sandy City Trails Master Plan



**Legend**

Trail Type	Symbol
Existing Bike Lane/Route	Red line
Existing Equestrian	Yellow line
Existing Mountain and Hiking	Green line
Existing Multipurpose	Blue line
Existing Park Trails/Jogging Paths	Purple line
Existing Secondary Path	Light blue line
Existing Walking	Light green line
Future Bike Lane/Route	Red dashed line
Future Equestrian	Yellow dashed line
Future Mountain and Hiking	Green dashed line
Future Multipurpose	Blue dashed line
Future Neighborhood Byway	Purple dashed line
Future Park Trails/Jogging Paths	Pink dashed line
Future Secondary Path	Light blue dashed line
Future Walking	Light green dashed line
Proposed Draper City Trails	Black dashed line

**Trailheads**

- Trailhead (Blue square with hiker icon)
- Parks (Green square)
- Sandy (White square)

**Scale:** 0, 500, 1,000, 2,000 Feet

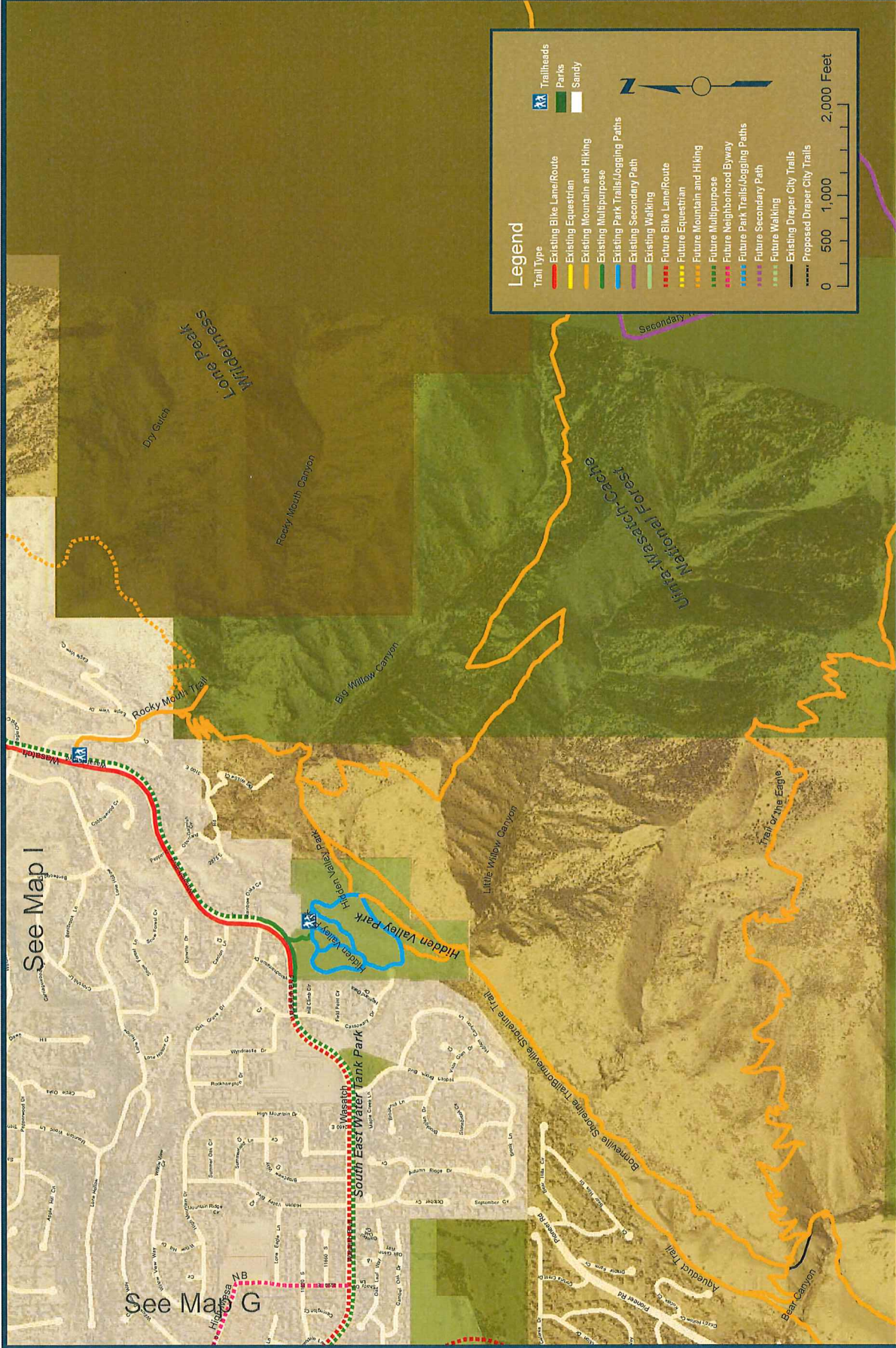
**North Arrow:** (North arrow pointing up)

See Map H

See Map J

See Map F

# Sandy City Trails Master Plan



See Map I

See Map G