



TRANS-JORDAN CITIES UPDATE

SANDY CITY COUNCIL : NOVEMBER 29, 2016

MARK HOOYER – EXECUTIVE DIRECTOR, TRANS-JORDAN CITIES

Draper • Midvale • Murray • Riverton • Sandy • South Jordan • West Jordan

PRESENTATION OUTLINE

1. Sandy by the Numbers
2. The Bicycle Collective
3. Debris Management Plans
4. Trans-Jordan's New Waste Cell Construction
5. Northern Utah Environmental Resource Agency (NUERA)

SANDY BY THE NUMBERS

Among the Trans-Jordan Cities, Sandy contributes:

- **21.2 %** of our population
- **22 %** of our total municipal waste - 37,854 tons/year
- **1.7 pounds** of trash per person/day (0.31 tons/year)
 - (nat'l average = **4.4 lbs/person/day**; 0.8 tons/year)
 - Sandy is below the national average because:
 - 1) low glass content (0.01% vs. 7% nationally)
- **~0.5 %** of our municipal greenwaste (112 tons/yr of 10,419 tons/yr)



DEBRIS MANAGEMENT

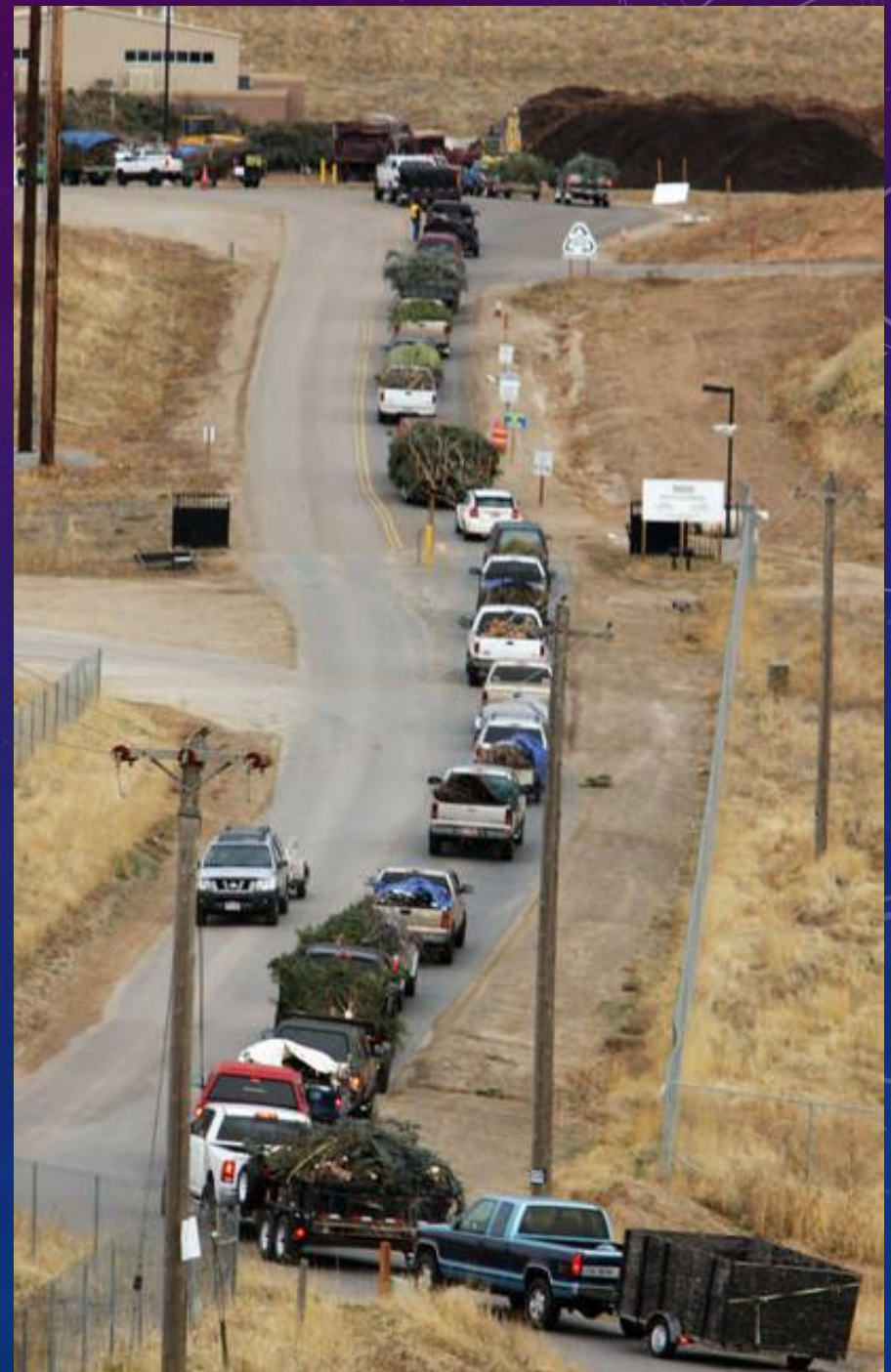
- Where does debris go after a natural disaster?



DEBRIS MANAGEMENT PLAN

- Agreement allows Sandy to stage debris at Trans-Jordan
- Formalized agreement will facilitates FEMA reimbursement for waste-handling expenses.


Photo: Davis Co. Landfill 2011



CELL 6A CONSTRUCTION





- 
- Capacity of Cell 6a: 2.4 MM yd³
 - = 2.1 MM tons capacity
 - = ~4.5 years until cell is full

NORTHERN UTAH ENVIRONMENTAL RESOURCE AGENCY (NUERA)

- Trans-Jordan design capacity: ~14 MM tons. Currently 9.3 MM tons Waste-in-Place.
- Remaining landfill life = ~ 10+ years.
- NUERA = Interlocal agency formed to focus on resource sharing among municipal solid waste entities.
- Purchase of the Bayview Landfill: Trans-Jordan, WIWMD (Davis Co.) North Pointe (No. Utah County) SUVSWD (So. Utah County).
- Purchase Price: **\$6,250,000**. Our cost = **\$1,562,500**

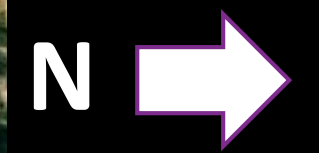
Bayview

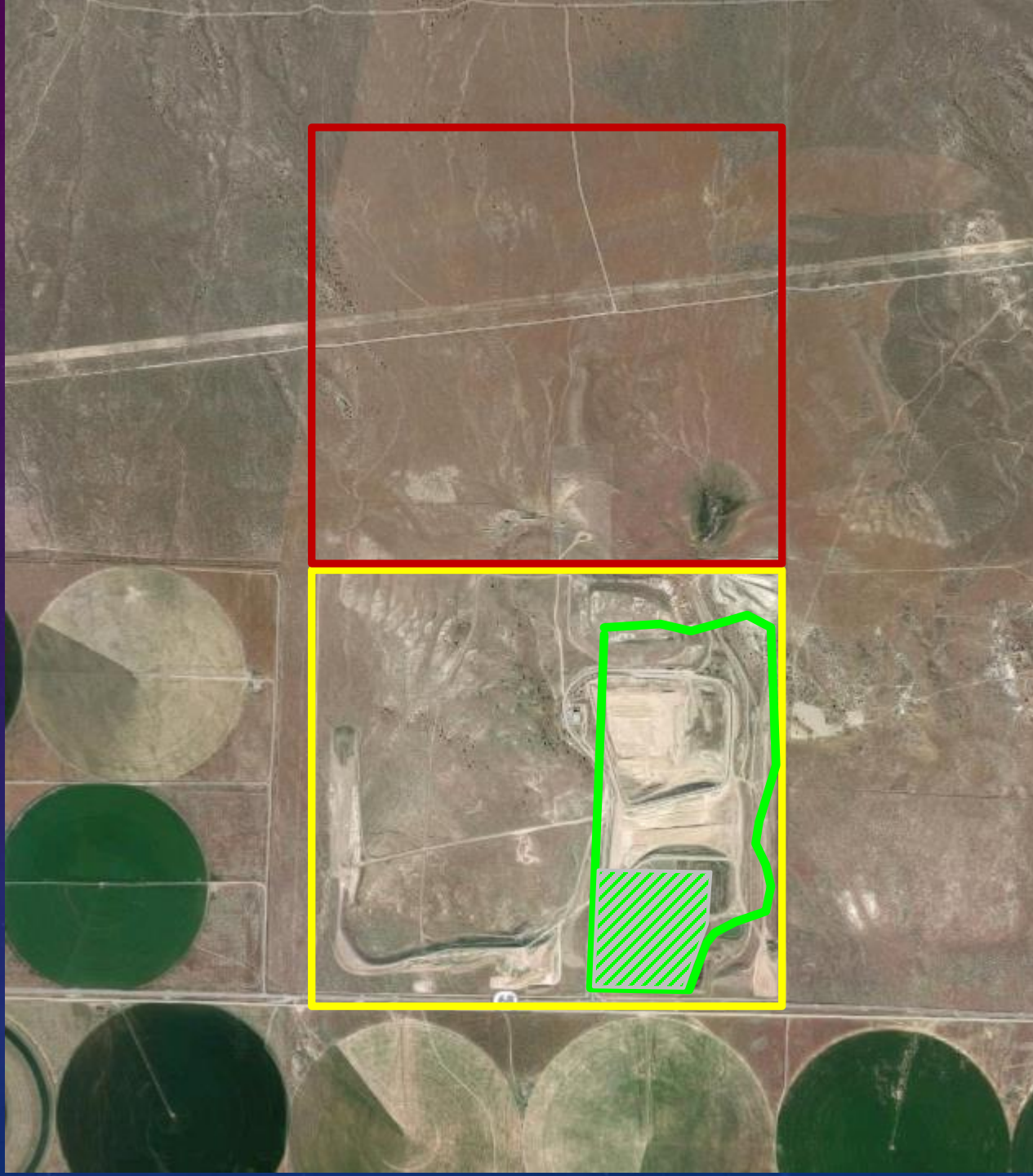


Trans-Jordan



43 Miles



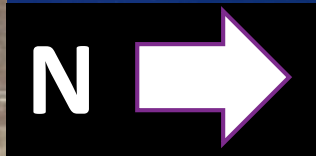


Existing 660 Acres

Future 680 Acres

Existing Trans-Jordan
~ 190 Acres

Trans-Jordan
remaining space



NUERA – BAYVIEW LANDFILL -ELBERTA, UT.





THANK YOU

Draper • Midvale • Murray • Riverton • Sandy • South Jordan • West Jordan