


# California Wildfire Deployment 2017





# Deployment Time Frame

- ▶ Mobilized and traveled to Southern California
  - ▶ Called to deploy on December 6th
  - ▶ Left Sandy and arrived in Temecula (Riverside County) on December 7th
- ▶ While in Southern California we assisted on two separate incidents
  - ▶ Lilac-5 fire from December 8<sup>th</sup> – 12<sup>th</sup>
  - ▶ Thomas fire from December 12<sup>th</sup> – 19<sup>th</sup>
- ▶ Demobilized and traveled home
  - ▶ Arrived in Mesquite, NV December 19<sup>th</sup>
  - ▶ Arrived in Sandy, UT December 20<sup>th</sup>
  
- ▶ Our Deployment lasted a total of 14 days.



# The call for assistance from California

- ▶ The California Office of Emergency Services (OES) declared the Thomas fire a state of emergency on December 5, 2017.
  - ▶ This allows for the activation of additional state resources to assist in the firefighting efforts.
- ▶ The California OES requested assistance from eight neighboring states through the Emergency Management Assistance Compact (EMAC) on December 6, 2017.
  - ▶ The request was for 50 engine strike teams (250 engines).
  - ▶ Utah was able to fill 5 task forces to assist in fulfilling this request.
    - ▶ Three Northern, One Central, and One Southern Utah Task Forces Responded.
- ▶ The Federal Government declared the Southern California fires a Federal state of emergency on December 8, 2017.

# Northern Utah Task Force 2

- ▶ Sandy Fire Department was part of the Northern Utah Task Force 2.
  - ▶ Other participating agencies included: South Jordan, West Jordan and Salt Lake City Fire Departments.
  - ▶ Total of 26 personnel, 3 type I engines, 3 type VI engines and 2 support vehicles
    - ▶ Sandy Fire
      - ▶ 1 Type VI engine with 2 personnel
    - ▶ South Jordan Fire
      - ▶ 1 Type I engine, 1 support vehicle with 8 personnel
    - ▶ West Jordan Fire
      - ▶ 1 Type I engine and 6 personnel
    - ▶ Salt Lake City Fire
      - ▶ 1 Type I engine, 2 Type VI engines, 1 support vehicle with 10 personnel

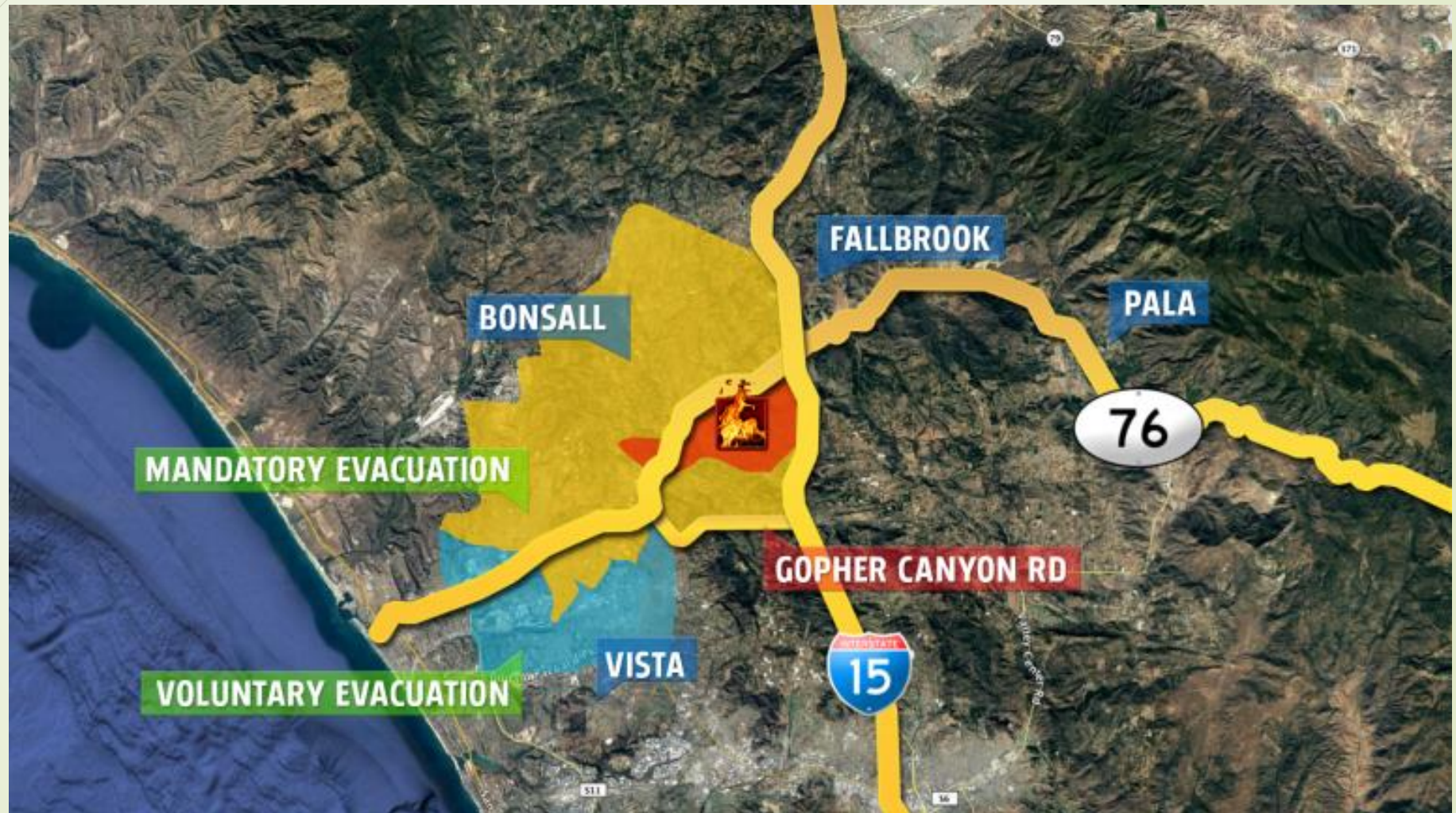


# Lilac Fire

- ▶ While enroute to staging we were diverted to the Lilac fire, which was located in Northern San Diego County.
  - ▶ This fire was reported at 11:15 on the 7<sup>th</sup> of December as a small brush fire just off of I-15.
    - ▶ Within 20 minutes, the fire had grown to 500 acres.
- ▶ Total growth of the fire was 4,100 acres.
  - ▶ There was a total of 157 structures destroyed and 64 others damaged.
  - ▶ Over 100,000 citizens were evacuated.
  - ▶ 46 horses were killed at the San Luis Rey Equestrian Park.
  - ▶ Three fire fighters were injured.
    - ▶ One was from Salt Lake City Fire.
      - ▶ Injured while doing overhaul work on a tree during the night.



# Lilac Fire



# Lilac Fire



# Lilac Fire





# Lilac Fire



# Lilac Fire



# Lilac Fire



# Lilac Fire



# Lilac Fire



# Lilac Fire

- ▶ Assignments on this fire included:
  - ▶ Protection of Property
    - ▶ Ocean Breeze Ranch
  - ▶ Protect High Value Live Stock
  - ▶ Mop Up and Cold Trailing



# Base Camp



# Base Camp





# Sleeping Arrangements

- Included:
  - A Hotel
  - A Youth Christian Camp
  - Mobile Sleeping Trailers
  - The Ground



# Meals



## Firefighter power lunches

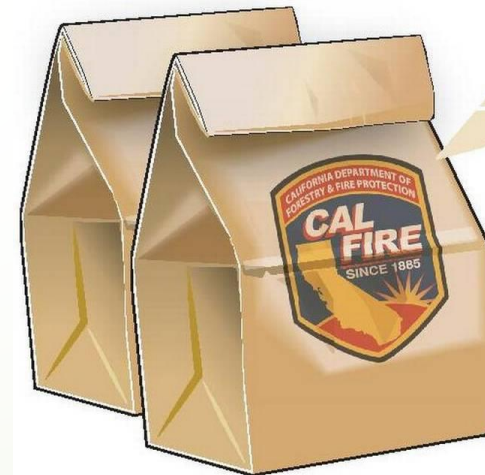
To keep up their energy over a 24 hour shift, firefighters will usually take two sack lunches a day.

**4 liters  
(1 gallon)**

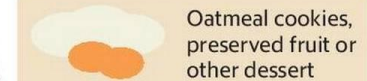
The amount of liquid a working firefighter sweats every 90 minutes

**10,000**

The number of calories a firefighter can consume in a 24 hour shift



### What's in a typical lunch bag:



Each lunch bag contains:

<b>3,000- 4,000</b> calories	<b>480g</b> Carbohy- drates	<b>82g</b> Protein
-------------------------------------	-----------------------------------	-----------------------

SHARON OKADA sokada@sacbee.com

# Thomas Fire

- After being demobilized on December 12, 2017 from the Lilac-5 fire we were immediately re-assigned to the Thomas Fire in Ventura County.





# Thomas Fire

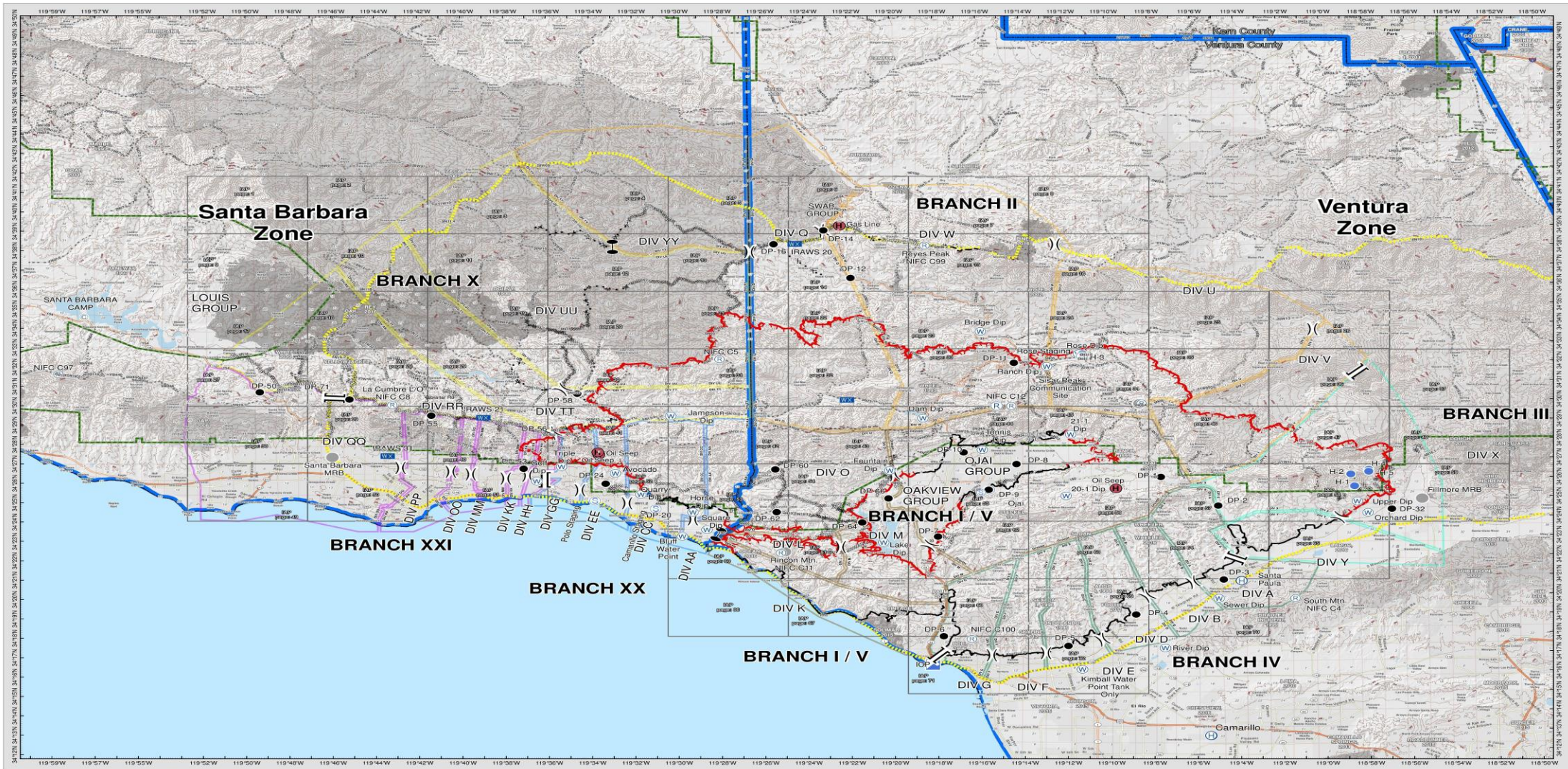
- ▶ This is now the largest wildfire in California's modern history.
  - ▶ This fire was reported at 18:26 on the 4<sup>th</sup> of December.
  - ▶ 30 minutes later a second fire about 4 miles north ignited.
    - ▶ The two fires merged as one later that night.
    - ▶ 500 residents in Ventura were destroyed the first night.
    - ▶ The fire had spread nearly 12 miles in just a couple of hours.
    - ▶ It burned a total of 50,000 acres through December 5<sup>th</sup>.
  - ▶ Total growth of this fire was 281,893 acres.
  - ▶ A total of 1,063 structures destroyed with an additional 280 being damaged.
  - ▶ One firefighter and one civilian were killed, another firefighter injured.
  - ▶ Nearly 105,000 citizens evacuated during the fire.
  - ▶ At its peak, 8,500 firefighters were assigned to this fire.

# Thomas Fire

- ▶ This fire was divided into two zones:
  - ▶ Ventura Zone
    - ▶ Base camp at the Ventura County Fair Grounds
  - ▶ Santa Barbara Zone
    - ▶ Base camp at Lake Cachuma



# Thomas Fire



**OPS MAP**  
Thomas Incident  
CA VNC 103156  
December 15th, 2017



- Proposed Dozer Line
- Uncontrolled Fire Edge
- Completed Line
- Completed Dozer Line
- Road as Completed Line
- Drop Point
- Incident Command Post
- Staging Area
- Repeater
- Helibase
- Water Source
- Division Break
- Branch Break
- Zone Break
- Other

**OPS MAP**  
**Thomas Incident**  
CA VNC 103156  
December 15th, 2017  
15142017 09:23:13  
0 1 2 3 4  
Miles

- USFS Administrative Forest
- Control Objectives
- T/R/S
- County Boundary
- Wilderness
- Mobile Weather Unit
- Forest Service Roads
- Hazards
- Fire History from 1996 - 2016
- 1996 - 1999
- 2000 - 2005
- 2006 - 2010
- 2011 - 2016



**OPS MAP**  
Thomas Incident  
CA VNC 103156  
December 15th, 2017

# Thomas Fire



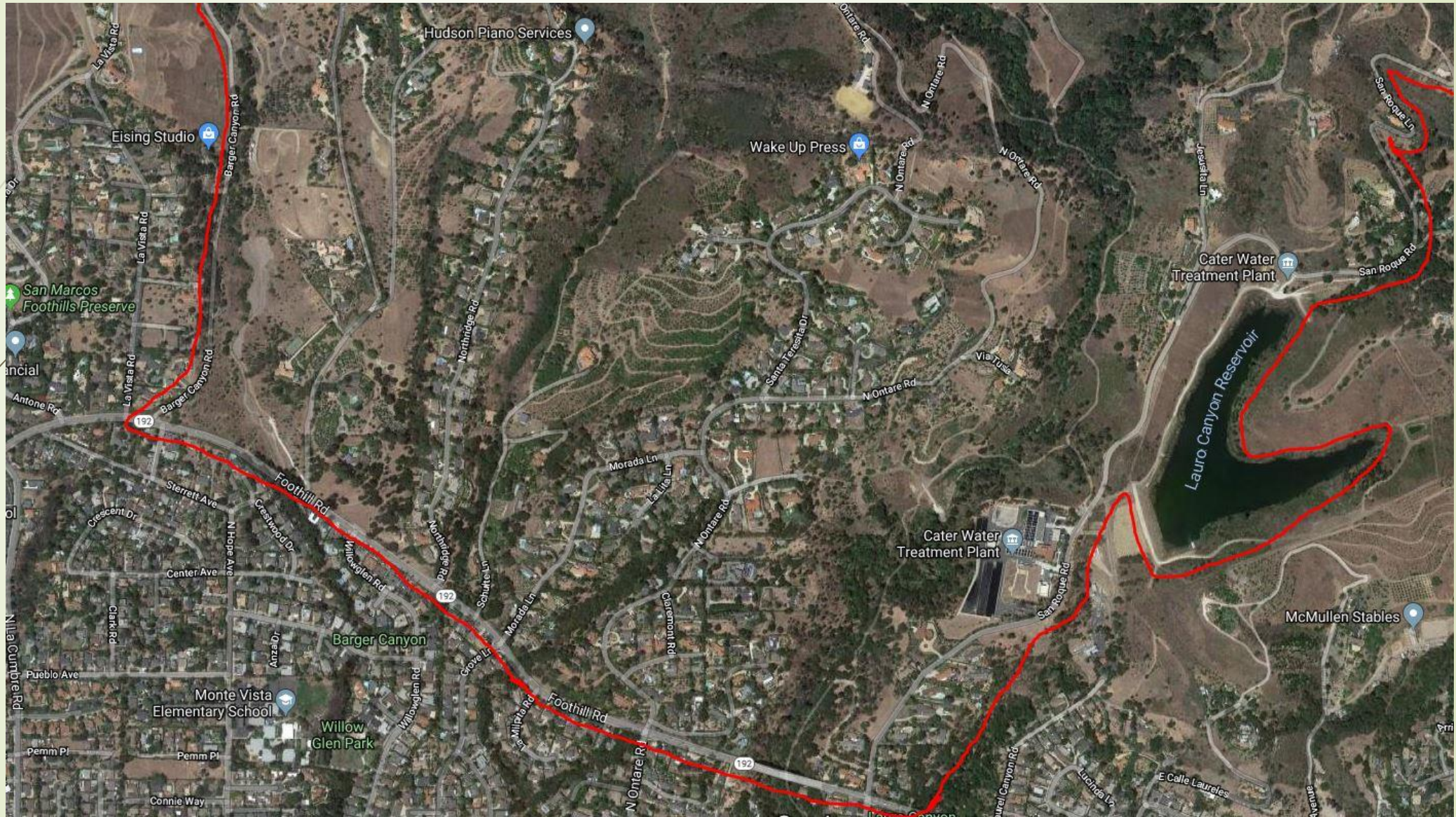
# Thomas Fire

- ▶ Our objectives on this fire included:
  - ▶ Triage Property
    - ▶ Residential structures in assigned area
  - ▶ Protect Critical Infrastructure
    - ▶ Santa Barbara Water Treatment Plant
  - ▶ Community Relations
    - ▶ Assist residents in preparation of their houses if evacuation orders are given.
  - ▶ Area Familiarization

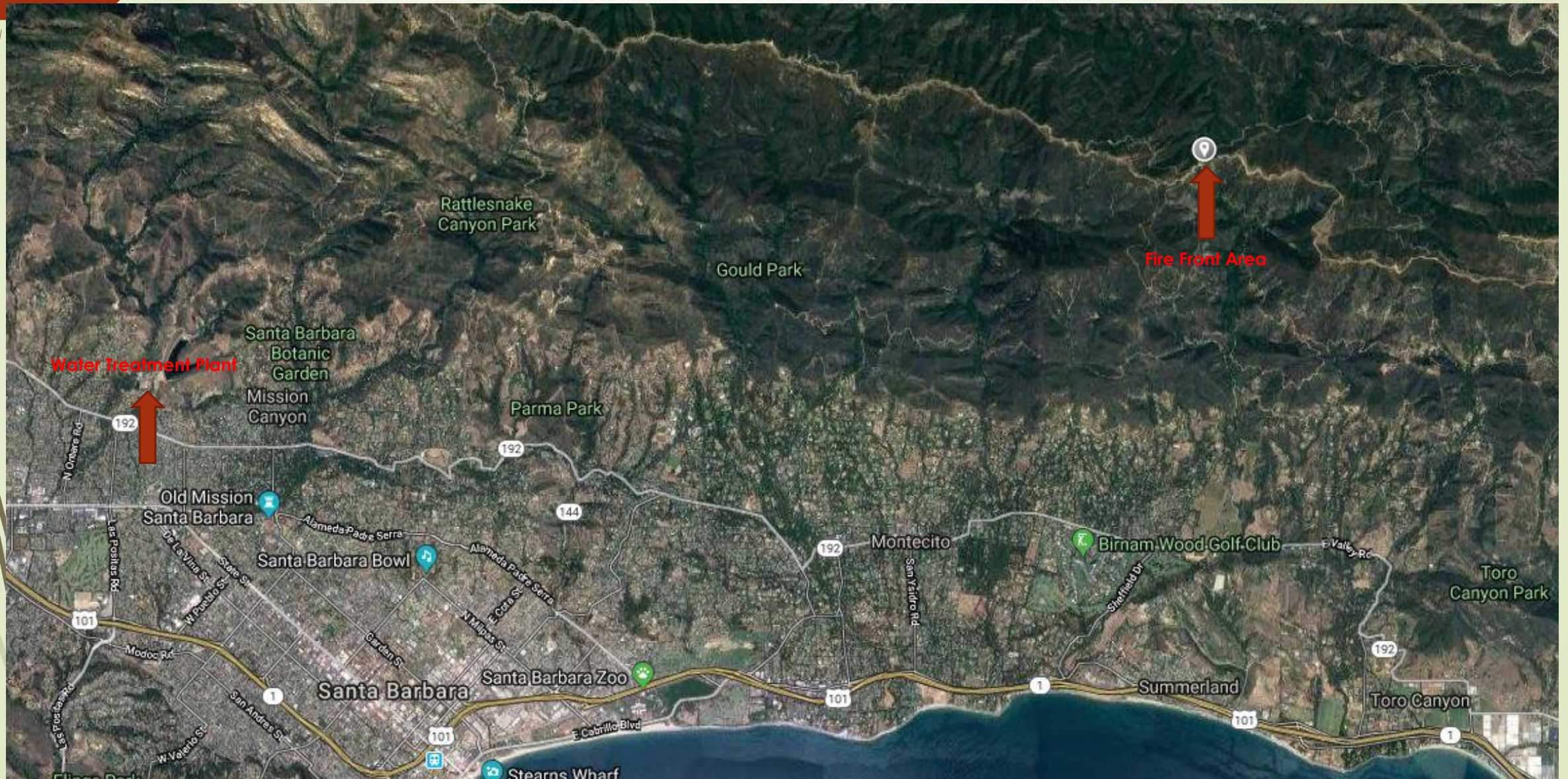




# Thomas Fire



# Thomas Fire



# Thomas Fire

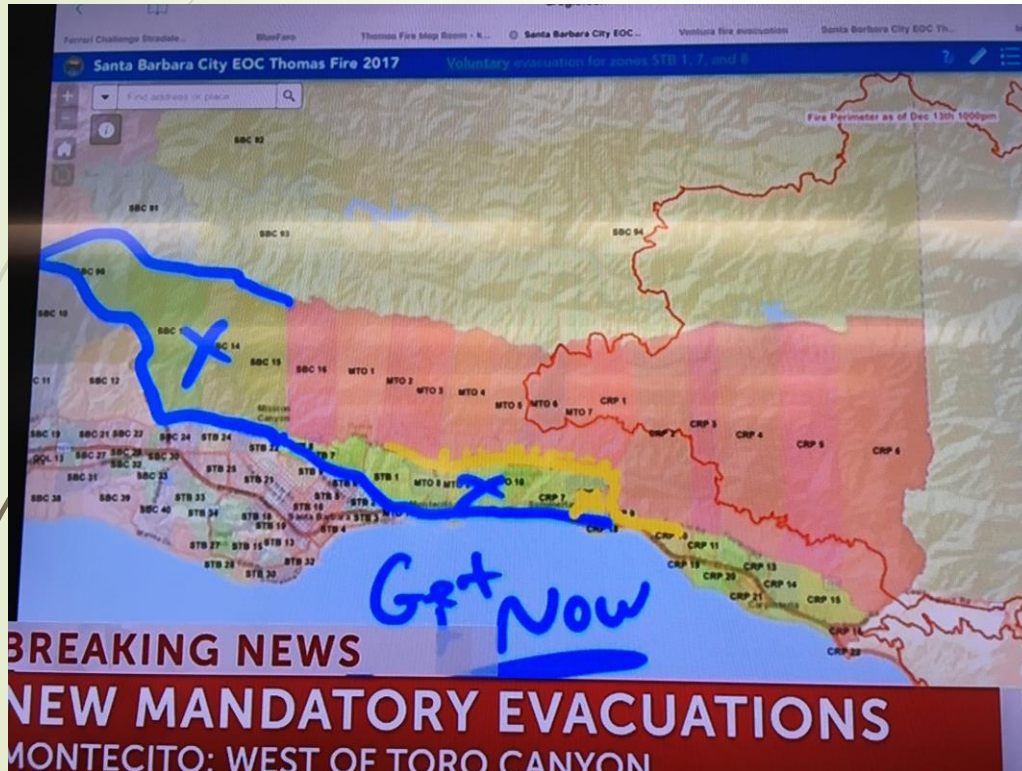


# Thomas Fire

- ▶ Firefighter Fatality
  - ▶ Fire Engineer Cory Iverson
    - ▶ Between 0900-1000 on Thursday December, 14 2017.
    - ▶ He was overtaken by fast moving fire.
    - ▶ Died of thermal injuries and smoke inhalation.



# Thomas Fire



# Thomas Fire

- ▶ The winds died down on the 17<sup>th</sup> and 18<sup>th</sup>, Cal Fire made an aggressive aerial attack.
  - ▶ The fire had grown over 18,000 acres during the wind storm.
  - ▶ By the night of the 18<sup>th</sup> containment had grown to 50%.
  - ▶ We were demobilized from the fire the following morning.



# Demobilization

- ▶ We received another vehicle safety inspection.
  - ▶ We started our travel home in the early afternoon of December 19, 2008.
  - ▶ We were able to travel to Mesquite, NV that evening.
  - ▶ All apparatus and personnel were back in their home stations at 1700 on the 20<sup>th</sup> of December.



# Thank You

- ▶ We want to thank you for allowing us to participate in this deployment and assist Cal Fire.
- ▶ The experience gained on the deployment is extremely valuable in preparation for incidents within Sandy City.

