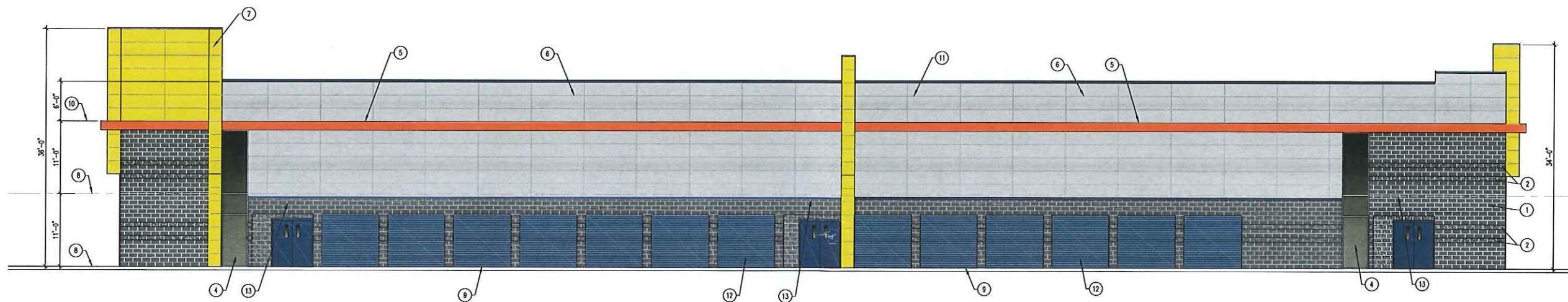




WEST ELEVATION

SCALE: 1/8" = 1'-0"

- KEYED MATERIAL NOTES:
1. SMOOTH FACED CMU - SUNROC CHARCOAL
 2. SPLIT FACE CMU - SUNROC CHARCOAL
 3. SIGNAGE
 4. ALUMINUM STOREFRONT - CLEAR GLAZING IN MILL FINISH ANODIZED ALUMINUM FRAMES
 5. POWDER COATED STEEL TRELIS
 6. METAL PANELS - GREY
 7. METAL PANELS - YELLOW
 8. FLOOR LINE
 9. GRADE LINE
 10. ROOF LINE
 11. PARAPET FOR MECHANICAL UNIT SCREENING
 12. PREFINISHED DOORS - BLUE
 13. METAL CORRUGATED PANELS - BLUE OVER ENTRIES



SOUTH ELEVATION

SCALE: 1/8" = 1'-0"

ALL IDEAS, DESIGNS, ARRANGEMENTS, AND PLANS INDICATED OR REPRESENTED BY THIS DRAWING ARE OWNED BY AND THE PROPERTY OF VINCENT DESIGN GROUP, INC. AND WERE CREATED, EVOLVED, AND DEVELOPED WITH THIS SPECIFIED PROJECT. NONE OF THE IDEAS, DESIGNS, ARRANGEMENTS, OR PLANS SHALL BE USED BY OR DISCLOSED TO ANY PERSON, FIRM, OR CORPORATION FOR ANY PURPOSE WITHOUT WRITTEN CONSENT OF VINCENT DESIGN GROUP, INC. UNLESS REPRODUCED HEREIN IS A CRIMINAL OFFENSE UNDER 18 U.S.C. SEC. 505 UNAUTHORIZED DISCLOSURE MAY CONSTITUTE TRADE SECRET, MISAPPROPRIATION, IN VIOLATION OF I.C. 24-2-2-31 ET. SEQ. AND OTHER LAWS.

NEW BUILDING FOR:
SECURE-N-LOCK STORAGE
SANDY FACILITY

8594 SOUTH HARRISON STREET
 SANDY, UTAH

EXTERIOR ELEVATIONS 1

ARCH. PROJECT NO:	XX-XXX
DATE:	7/18/18
DRAWN BY:	BRENT
CHECKED BY:	
DESIGNED BY:	

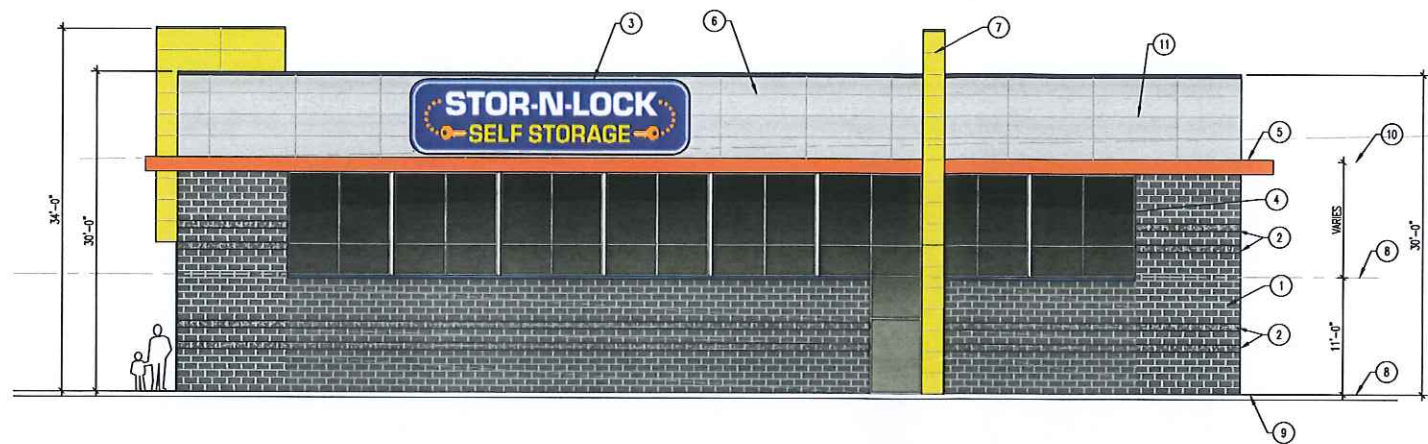
© COPYRIGHT VDG ARCHITECTS

DATE	REVISION

SHEET TITLE
A-2.00
 ARCHITECTURAL 1 of 1

VDG VINCENT DESIGN GROUP, INC.
 ARCHITECTS AND PLANNERS

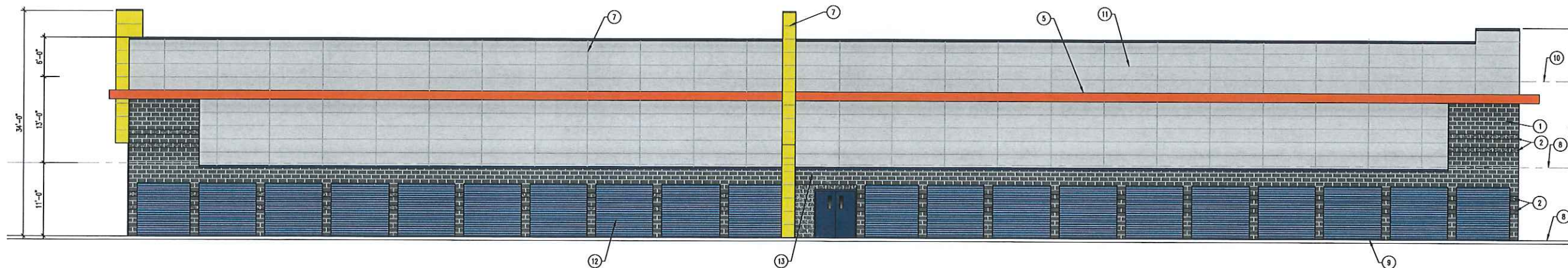
401 EAST 1700 SOUTH, SALT LAKE CITY, UTAH - (801) 484-2046



EAST ELEVATION

SCALE: 1/8" = 1'-0"

- KEYED MATERIAL NOTES:
1. SMOOTH FACED CMU - SURROC CHARCOAL
 2. SPLIT FACE CMU - SURROC CHARCOAL
 3. SIGNAGE
 4. ALUMINUM STOREFRONT - CLEAR GLAZING IN MILL FINISH ANODIZED ALUMINUM FRAMES
 5. POWDER COATED STEEL TRELLIS
 6. METAL PANELS - GREY
 7. METAL PANELS - YELLOW
 8. FLOOR LINE
 9. GRADE LINE
 10. ROOF LINE
 11. PARAPET FOR MECHANICAL UNIT SCREENING
 12. PREFINISHED DOORS - BLUE
 13. METAL CORRUGATED PANELS - BLUE OVER ENTRIES



NORTH ELEVATION

SCALE: 1/8" = 1'-0"

ALL IDEAS, DESIGNS, ARRANGEMENTS, AND PLANS INDICATED OR REPRESENTED BY THIS DRAWING ARE OWNED BY AND ARE THE PROPERTY OF VINCENT DESIGN GROUP, INC. AND WERE CREATED, EVALUATED, AND DEVELOPED WITH THIS SPECIFIED PROJECT. NONE OF THE IDEAS, DESIGNS, ARRANGEMENTS, OR PLANS SHALL BE USED BY OR DISCLOSED TO ANY PERSON, FIRM, OR CORPORATION FOR ANY PURPOSE WHATSOEVER WITHOUT WRITTEN CONSENT OF VINCENT DESIGN GROUP, INC. UNAUTHORIZED DISCLOSURE MAY CONSTITUTE TRADE SECRET, MISAPPROPRIATION, IN VIOLATION OF I.C. 24-2-31 ET. SEQ. AND OTHER LAWS. © COPYRIGHT VDG ARCHITECTS

ARCH. PROJECT NO: XX-XXX
 DATE: 7/18/18
 DRAWN BY: BRENT
 CHECKED BY:
 DESIGNED BY:

© COPYRIGHT VDG ARCHITECTS

DATE	REVISION

SHEET TITLE

A-2.10

ARCHITECTURAL 1 of 1

NEW BUILDING FOR:
SECURE-N-LOCK STORAGE
SANDY FACILITY

8594 SOUTH HARRISON STREET
 SANDY, UTAH

EXTERIOR ELEVATIONS 2

VDG VINCENT DESIGN GROUP, INC.
 ARCHITECTS AND PLANNERS

401 EAST 1700 SOUTH, SALT LAKE CITY, UTAH - (801-484-2046)

THIS DRAWING AND ITS DESIGN AND DETAILS ARE THE PROPERTY OF BARNETT STRUCTURES, L.C. AND SHALL NOT BE COPIED IN WHOLE OR PART WITHOUT WRITTEN CONSENT OF BARNETT STRUCTURES, L.C. ALL RIGHTS OF DESIGN AND INVENTION ARE RESERVED. COPYRIGHT © BARNETT STRUCTURES 2018

ABBREVIATIONS INDEX

# NUMBER	(F) FUTURE	NO NORMALLY OPEN
1 PHASE	FA FIRE ALARM	NTS NOT TO SCALE
1P SINGLE PHASE	FACP FIRE ALARM CONTROL PANEL	OFCI OWNER FURNISHED CONTRACTOR INSTALLED
2P TWO-POLE	FC FOOT CANDLE	OFDI OWNER FURNISHED OWNER INSTALLED
3P THREE PHASE	FLA FULL LOAD AMPS	OS&Y OUTSIDE SCREW AND YOKES
4P FOUR-POLE	FT FOOT	PB PUSH BUTTON
AC ALTERNATING CURRENT	FRZ FREEZER	PF POWER FACTOR
AFT ABOVE FINISHED FLOOR	FS FUSED SWITCH	PFR PHASE FAILURE RELAY
AFG ABOVE FINISHED GRADE	GFCI GROUND FAULT CIRCUIT INTERRUPTER	PNL PANEL
AFP ARC FAULT PROTECTOR	GFCI GROUND FAULT CIRCUIT INTERRUPTER	PT POTENTIAL TRANSFORMER
AIC AMP INTERRUPTING CURRENT (SYMMETRICAL)	GRD GALVANIZED RIGID CONDUIT	PV PHOTOVOLTAIC
AL ALUMINUM	GRD GROUND	PVC POLYVINYL CHLORIDE
AM AMP'S METER	HP HORSE POWER	(R) RELOCATE
AMP AMPERE	HZ HERTZ	RECP RECEPTACLE
ANN ANNUNCIATOR	IG ISOLATED GROUND	REF REFRIGERATOR
ATS AUTOMATIC TRANSFER SWITCH	IMC INTERMEDIATE METALLIC CONDUIT	REQ REQUIRED
AUX AUXILIARY	IN INCH	RLA RATED LOAD AMPS
AWG AMERICAN WIRE GAUGE	J-BOX JUNCTION BOX	RMS ROOT MEAN SQUARE
BC BARE COPPER	KV KILOVOLT	SE SERVICE ENTRANCE
BFG BELOW FINISH GRADE	KVA KILOVOLT AMPERES	SPD SURGE PROTECTION DEVICE
C CONDUIT	KVAR KILOWARS	SPEC SPECIFICATION
CAB CABINET	KW KILOWATT	SPK SPEAKER
CATB COMMUNITY ANTENNA TELEVISION	LRA LOCKED ROTOR AMPS	SS SELECTOR SWITCH
CATV CABLE TELEVISION	LTD LIGHTING	SW SWITCH
CFCI CONTRACTOR FURNISHED CONTRACTOR INSTALLED	MATV MASTER ANTENNA TELEVISION	SWBD SWITCHBOARD
CKT CIRCUIT	MAX MAXIMUM	SWGR SWITCHGEAR
CLG CEILING	MB MAIN BUS	SWGR SWITCHGEAR
CONTR CONTRACTOR	MCB MAIN CIRCUIT BREAKER	TBB TELEPHONE TERMINAL BOARD
CO CONDUIT ONLY	MCC MOTOR CONTROL CENTER	TBC TELEPHONE TERMINAL CABINET
CRT COMPUTER TERMINAL	MCM 1000 CIRCULAR MILLS	TV TELEVISION
CT CURRENT TRANSFORMER	MH MANHOLE	TYP TYPICAL
CU COPPER	MC MICROPHONE	UG UNDERGROUND
C/W CONDUIT WITH	MIN MINIMUM	UNO UNLESS NOTED OTHERWISE
(D) DEMOLISH/DELETE	MLO MAIN LUGS ONLY	UPS UNINTERRUPTIBLE POWER SUPPLY
DB DECIBEL	MNF MANUFACTURER	V VOLT (KV-KILOVOLT)
DC DIRECT CURRENT	MTG MOUNTING	V VOLT-AMPS/REACTIVE
DISP DISPOSAL	MTR MOTOR	VM VOLT METER
DRY DRYER	MW MICROWAVE	W WATTS
DW DISHWASHER	(N) NEW	W/ WITH
DWG DRAWING	N/A NOT APPLICABLE	WASH WASHER
EC EMPTY CONDUIT	NC NORMALLY CLOSED	WH WATTHOUR
EM EMERGENCY	NEC NATIONAL ELECTRICAL CODE	W/O WITHOUT
EMG EMERGENCY GENERATOR	NEMA NATIONAL MANUFACTURING ASSOCIATION	WP WEATHER PROOF
EMT ELECTRICAL METALLIC TUBING	NFC NATIONAL FIRE CODE	WTR TRANSFORMER
EPO EMERGENCY POWER OFF	NFPA NATIONAL FIRE PROTECTION ASSOCIATION	XFMR-SW TRANSFORMER SWITCH
EWG ELECTRIC WATER COOLER	NFS NON FUSED SWITCH	XP EXPLOSION PROOF
EWH ELECTRIC WATER HEATER	NIC NOT IN CONTRACT	
EX EXISTING	NL NIGHT LIGHT	

NOTE: THIS IS A TYPICAL ABBREVIATION LIST. NOT ALL ABBREVIATIONS MAY BE USED ON THIS PROJECT.

ELECTRICAL SYMBOLS

SYMBOL	EXPLANATION	SYMBOL	EXPLANATION	SYMBOL	EXPLANATION
---	BRANCH CIRCUIT CONCEALED IN CEILING OR WALL	F1	FIXTURE TYPE SYMBOL	⊙	TAMPER AND FLOW
----	BRANCH CIRCUIT CONCEALED IN GROUND OR FLOOR	□	FLUORESCENT FIXTURE (TYPICAL)	[FACE]	FIRE ALARM CONTROL PANEL
A-1,3	BRANCH CIRCUIT HOMERUNS TO PANEL	⊖	EMERGENCY LIGHTING UNIT	[RELA]	REMOTE FIRE ALARM ANNUNCIATOR PANEL
135	ROOM NUMBER	◇	SURFACE OR PENDANT MOUNTED FIXTURE	[RAC]	FIRE ALARM RAC PANEL
⊕	MECHANICAL EQUIPMENT SYMBOL	□	RECESSED FIXTURE	[VOC]	FIRE ALARM VOICE PANEL
◇	KEYED NOTE REFERENCE	○	WALL MOUNTED FIXTURE	[DZH]	DOOR HOLDER
423	FEEDER TAG (SEE FEEDER SCHEDULE)	⊖	WALL PACK	[FZS]	FIRE/SMOKE DAMPER
⊖	LIGHTING AND POWER PANELBOARD	—	FLUORESCENT STRIP	[P]	FIRE ALARM PULL STATION
⊖	DISCONNECT SWITCH	∇	TRACK LIGHTING	[S]	FIRE ALARM STROBE
⊖	DISCONNECT SWITCH WITH MOTOR STARTER	⊖	EMERGENCY LIGHTING UNIT	[H]	FIRE ALARM HORN/STROBE
⊖	MOTOR STARTER	⊖	WALL MOUNTED EXIT LIGHT (SINGLE FACE)	[H-LF]	FIRE ALARM HORN/STROBE (LF = LOW FREQUENCY)
[VFD]	VARIABLE FREQUENCY DRIVE	⊖	WALL MOUNTED EXIT LIGHT (DOUBLE FACE)	[H-C]	FIRE ALARM HORN/STROBE WITH PROTECTIVE COVER
⊖	CONDUIT STUB	⊖	CEILING MOUNTED EXIT LIGHT	[H-C]	FIRE ALARM SPEAKER/STROBE
⊖	JUNCTION BOX	⊖	CEILING MOUNTED EXIT LIGHT (DOUBLE FACE)	[H-LF]	FIRE ALARM SPEAKER/STROBE (LF = LOW FREQUENCY)
⊖	ELECTRIC VEHICLE CHARGING STATION	⊖	EXIT LIGHT WITH PROTECTIVE COVER	[H-C]	FIRE ALARM SPEAKER
⊖	DUPLEX RECEPTACLE OUTLET	2	SINGLE POLE SWITCH (SUBSCRIPT AS INDICATED BELOW)	[H-LF]	FIRE ALARM SPEAKER (LF = LOW FREQUENCY)
⊖	SPLIT WIRED DUPLEX RECEPTACLE OUTLET	3	TWO POLE SWITCH	[H]	FIRE ALARM HORN
⊖	220V RECEPTACLE OUTLET	4	3-WAY SWITCH	[H-LF]	FIRE ALARM HORN (LF = LOW FREQUENCY)
⊖	ISOLATED GROUND RECEPTACLE	5	4-WAY SWITCH	[H-C]	FIRE ALARM HORN/STROBE CEILING MOUNTED
⊖	RECEPTACLE FLOOR DEVICE	6	WEATHERPROOF COVER & LISTED WEATHER RESISTANT DEVICE	[H-C]	FIRE ALARM HORN/STROBE CEILING MOUNTED
⊖	CEILING MOUNTED DEVICE	7	PROTECTED BY FAULT CIRCUIT INTERRUPTER	[H-LF]	FIRE ALARM HORN/STROBE CEILING MOUNTED (LF = LOW FREQUENCY)
⊖	SPECIAL RECEPTACLE	8	MOUNTING HEIGHT ABOVE FLOOR OR GRADE GIVEN IN INCHES	[H-C]	FIRE ALARM HORN/STROBE CEILING MOUNTED (LF = LOW FREQUENCY)
⊖	MOTOR OUTLET	9	REF REFRIGERATOR	[H-LF]	FIRE ALARM HORN/STROBE CEILING MOUNTED (LF = LOW FREQUENCY)
⊖	EXHAUST FAN	10	DW DISHWASHER	[H-C]	FIRE ALARM HORN CEILING MOUNTED
⊖	THERMOSTAT OUTLET	11	DISP DISPOSAL	[H-LF]	FIRE ALARM HORN CEILING MOUNTED (LF = LOW FREQUENCY)
⊖	REMOTE SENSOR OUTLET	12	WASH WASHING MACHINE	[H-C]	FIRE ALARM HORN CEILING MOUNTED (LF = LOW FREQUENCY)
⊖	TELEPHONE OUTLET	13	EWG ELECTRIC WATER COOLER	[H-LF]	FIRE ALARM HORN CEILING MOUNTED (LF = LOW FREQUENCY)
⊖	COMPUTER DATA OUTLET (F) INDICATES JACK QUANTITIES	14	USB COOPER TR7746 OR EQUAL DUPLEX PLUS USB CHARGER	[H-C]	FIRE ALARM HORN CEILING MOUNTED (LF = LOW FREQUENCY)
⊖	NETWORK AND VOICE OUTLET	15	TR TAMPER RESISTANT	[H-LF]	FIRE ALARM HORN CEILING MOUNTED (LF = LOW FREQUENCY)
⊖	WIRELESS ACCESS POINT CEILING MOUNTED	16	QUAD RECEPTACLE OUTLET	[H-C]	SMOKE DETECTOR (SUBSCRIPT AS INDICATED BELOW)
⊖	TELEVISION OUTLET	17	SPLIT WIRED DUPLEX RECEPTACLE OUTLET	[H-LF]	SMOKE ALARM BATTERY-BACKED
		18	220V RECEPTACLE OUTLET	[H-C]	SMOKE/CARBON MONOXIDE ALARM COMBO BATTERY-BACKED
		19	ISOLATED GROUND RECEPTACLE	[H-LF]	DUCT SMOKE DETECTOR
		20	RECEPTACLE FLOOR DEVICE	[H-C]	SMOKE DETECTOR WITH ADDRESSABLE RELAY
		21	CEILING MOUNTED DEVICE	[H-LF]	SMOKE DETECTOR WITH SOUNDER BASE
		22	SPECIAL RECEPTACLE	[H-C]	HEAT DETECTOR
		23	MOTOR OUTLET	[H-LF]	GAS DETECTOR
		24	EXHAUST FAN	[H-C]	CARBON MONOXIDE DETECTOR
		25	THERMOSTAT OUTLET	[H-LF]	CARBON MONOXIDE/NITROGEN DIOXIDE SENSOR (GARAGE)
		26	REMOTE SENSOR OUTLET	[H-C]	ADA TWO-WAY COMMUNICATIONS SYSTEM
		27	TELEPHONE OUTLET	[H-LF]	ACCESS CONTROL KEY PAD
		28	COMPUTER DATA OUTLET (F) INDICATES JACK QUANTITIES	[H-C]	ACCESS CONTROL CARD READER
		29	NETWORK AND VOICE OUTLET	[H-LF]	ACCESS CONTROL DOOR STRIKE
		30	WIRELESS ACCESS POINT CEILING MOUNTED	[H-C]	ACCESS CONTROL DOOR SENSOR
		31	TELEVISION OUTLET	[H-LF]	ACCESS CONTROL REQUEST TO EXIT
		32		[H-C]	PUSHBUTTON
		33		[H-LF]	BELL

NOTE: ALL SYMBOLS MAY NOT BE USED.

REVISION

SYM.	DESCRIPTION	DATE	APPROVAL	CAD
1	STORAGE LAYOUT PROPOSAL	7/11/18	BARNETT	TMN

DESIGN CONTACTS

ELECTRICAL ENGINEER:	RYAN BEAGLES
ELECTRICAL TEAM LEAD:	DAVID SWEARINGEN
ELECTRICAL DESIGNER:	DAVID SWEARINGEN

SHEET INDEX

SHEET NUMBER	SHEET TITLE
E001	ELECTRICAL COVER SHEET
E002	PHOTOMETRIC PLAN

ROYAL ENGINEERING

ELECTRICAL
1837 S. EAST BAY BLVD.
PHONE: 801.375.2228

MECHANICAL
PROVO, UTAH 84606
FAX: 801.375.2676

COPYRIGHT © JOB# J000000 DATE PLOTTED: 08/22/2018

THESE DOCUMENTS ARE INSTRUMENTS OF PROFESSIONAL SERVICE AND THE INFORMATION CONTAINED HEREIN IS PROPRIETARY TO ROYAL ENGINEERING. ANY REPRODUCTION OR TRANSMISSION OF THESE DOCUMENTS IN WHOLE OR IN PART WITHOUT ROYAL ENGINEERING'S WRITTEN CONSENT IS IN VIOLATION OF UTAH AND FEDERAL COPYRIGHT LAWS AND MAY BE SUBJECT TO CIVIL AND CRIMINAL PENALTIES. UTAH PROFESSIONAL ENGINEERING ACT 33-A-2-101. U.S. PAT. 5,011,151.



STOR_N_LOCK SANDY,UTAH BARNETT STRUCTURES COPYRIGHT ©

THIS DRAWING AND ITS DESIGN AND DETAILS ARE THE PROPERTY OF BARNETT STRUCTURES, L.C. AND SHALL NOT BE COPIED IN WHOLE OR PART WITHOUT WRITTEN CONSENT OF BARNETT STRUCTURES, L.C. ALL RIGHTS OF DESIGN AND INVENTION ARE RESERVED. COPYRIGHT © BARNETT STRUCTURES 2018

LIGHT FIXTURE SCHEDULE

FIXTURE NUMBER	FIXTURE MANUFACTURER	FIXTURE CATALOG #	LAMPS		FIXTURE		DESCRIPTION	REMARKS
			TYPE	QTY.	VOLTS	WATTS		
F1	LITHONIA ALLGREEN RAB	OLWX1 LED 40 50K MVOLT CBA PE DORADO 45W 120-277V CBA 120VPC WFL02150VPC	LED	-	120	45	WALL	LED WALL PACK 5000 LUMENS AND INTEGRAL PHOTOCELL CONTROL

REVISION

SYM.	DESCRIPTION	DATE	APPROVAL	CAD
1	STORAGE LAYOUT PROPOSAL	7/11/18	BARNETT	TMN

ELECTRICAL KEYED NOTES:

◊ ILLUMINANCE INDICATED IN FOOT CANDLES.



PHOTOMETRIC PLAN
SCALE: 1" = 30'-0"

ROYAL ENGINEERING
ELECTRICAL 1837 S. EAST BAY BLVD. PHONE: 801.375.2228
MECHANICAL PROVO, UTAH 84608 FAX: 801.375.2676
COPYRIGHT © JOB# JXXXXXX DATE PLOTTED: 08/22/2018

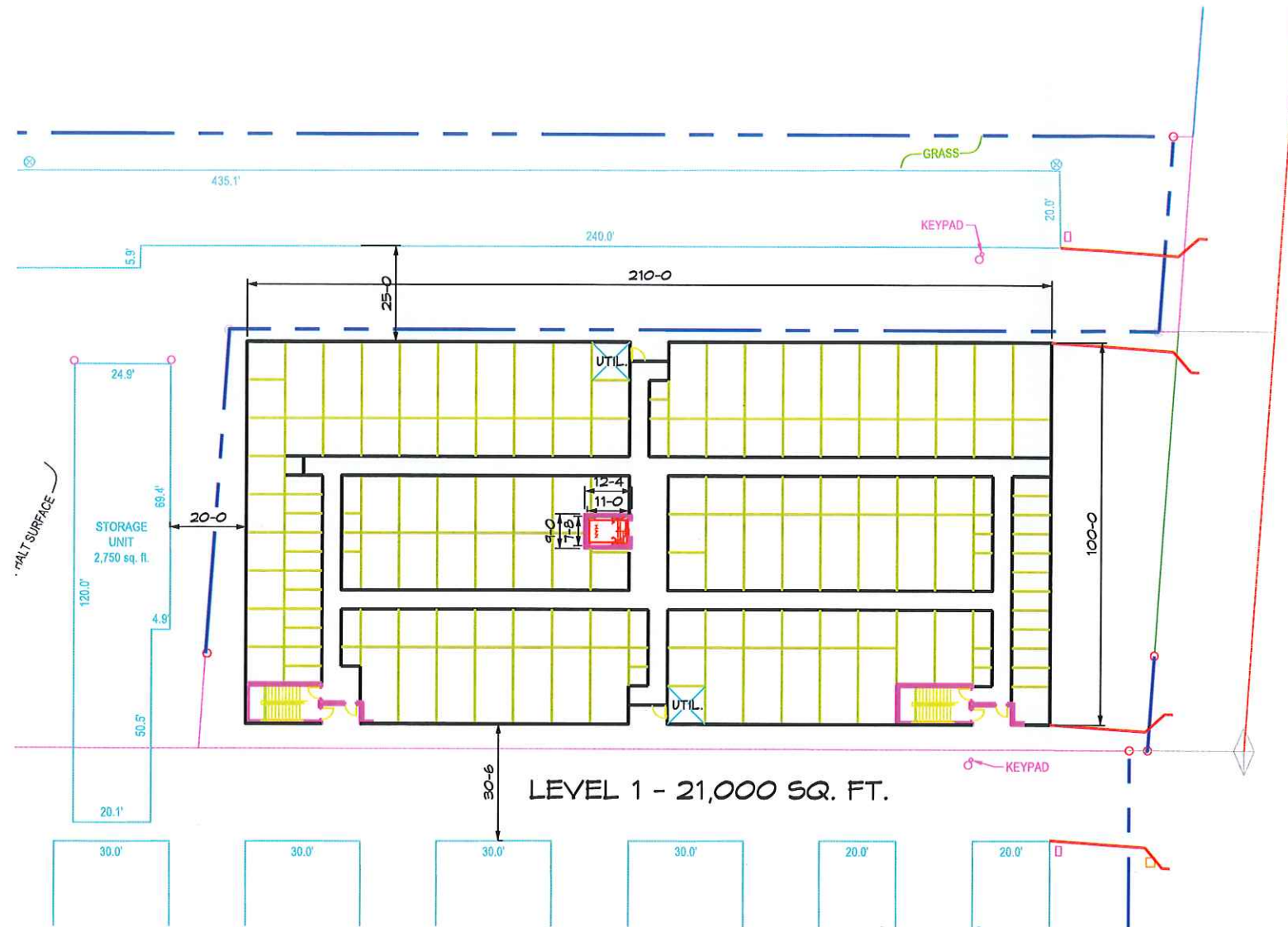


STOR_N_LOCK SANDY, UTAH BARNETT STRUCTURES COPYRIGHT ©

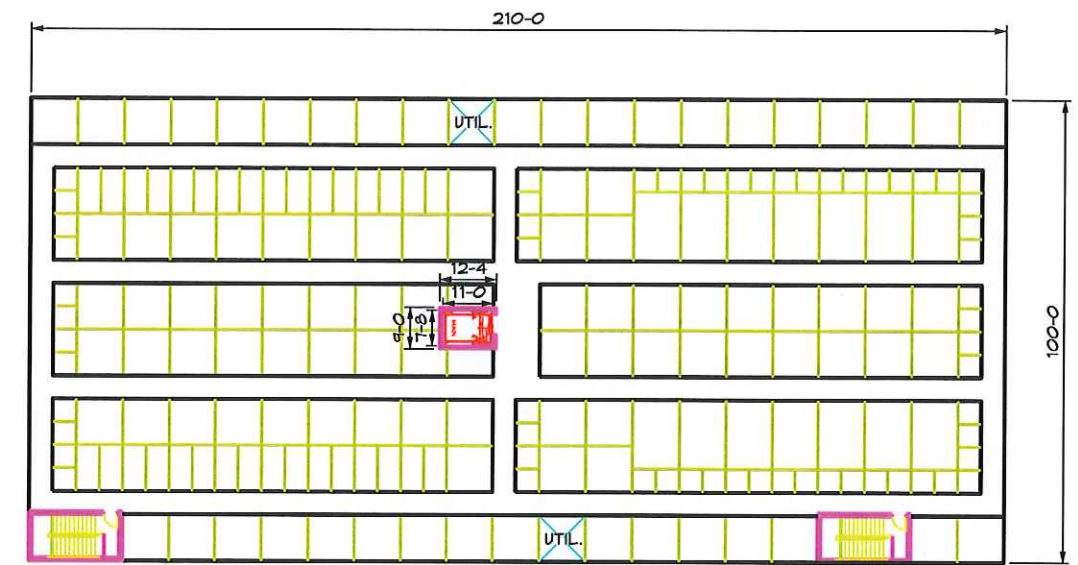
PROJECT #	DRAWING	REV.
13 1817	E002	1

THIS DRAWING AND ITS DESIGN AND DETAILS ARE THE PROPERTY OF BARNETT STRUCTURES, L.C. AND SHALL NOT BE COPIED IN WHOLE OR PART WITHOUT WRITTEN CONSENT OF BARNETT STRUCTURES, L.C. ALL RIGHTS OF DESIGN AND INVENTION ARE RESERVED. COPYRIGHT © BARNETT STRUCTURES 2018

REVISION				
SYM.	DESCRIPTION	DATE	APPROVAL	CAD
1	STORAGE LAYOUT PROPOSAL	7/11/18	BARNETT	TMN
2	ELEVATOR UPDATE	8/15/18	BARNETT	TMN



LEVEL 1 - 21,000 SQ. FT.



LEVEL 2 - 21,000 SQ. FT.



STORAGE LAYOUT

	DRAWN BY	TATE NIELSEN	STOR N LOCK SANDY, UTAH										
	CHECKED												
	ENGINEER	LYNN BARNETT	STORAGE LAYOUT										
	ADDRESS:	P.O. BOX 1248 1191 S. MAIN CENTERVILLE, UT 84014											
PHONE:	(801) 294-2950	SCALE	1-20	SIZE	D	SHEET	1 OF 1	PROJECT #	1817	DRAWING	SL	REV	2
FAX:	(801) 294-2939	DO NOT SCALE DRAWING											