

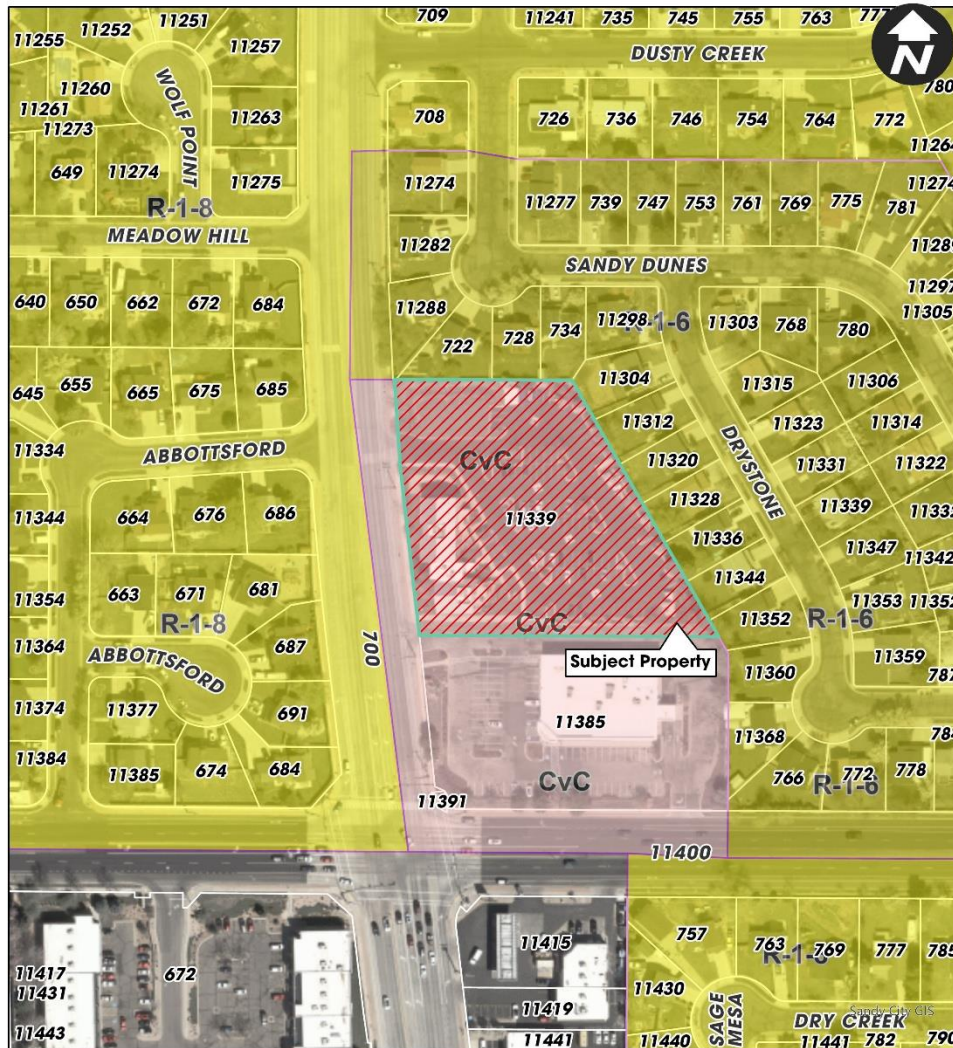
## Application



# Zoning

## Surrounding Zone Districts

- North: R-1-8  
(residential)
- East: R-1-8  
(residential)
- South: CvC  
(pharmacy)
- West: R-1-8  
(residential)



EmpoweringU Rezone  
11339 S 700 E  
REZ05192025-006970

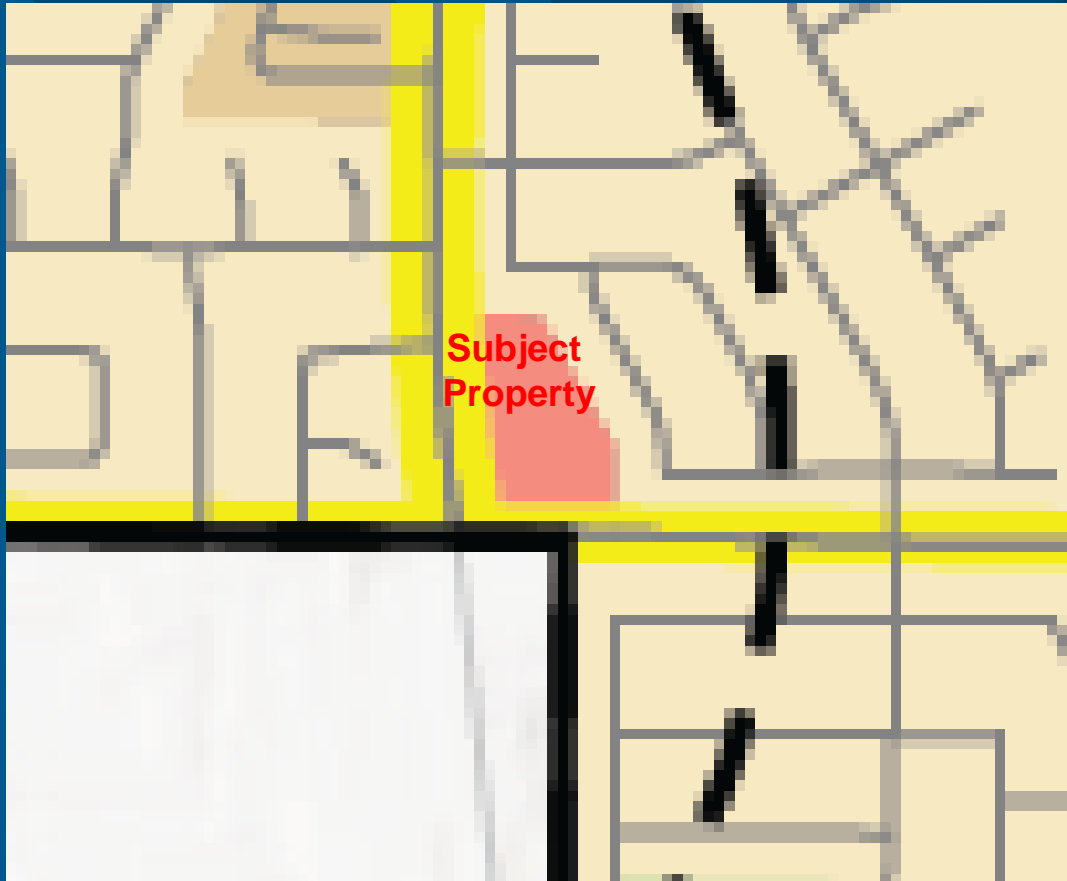
Sandy City, UT  
Community Development Department

**City Council Presentation**





# General Plan



- FLUM: Light Commerce
- “Light Commerce areas are the backbone of Sandy’s local economy, offering small-scale retail and office spaces...”