



SANDY CITY PARKS, TRAILS & RECREATION MASTER PLAN



Planning Commission
Meeting

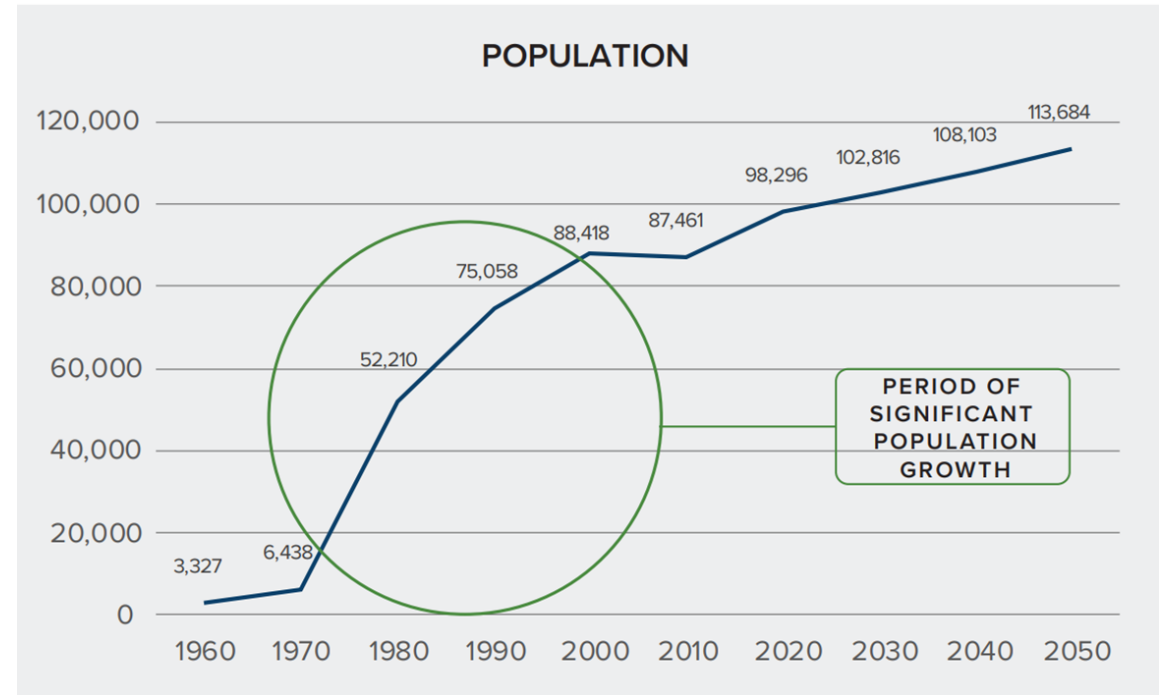
March 7, 2024

Background Information

The last Parks, Trails, and Recreation Master Plan was completed in 2005

- The 2005 focused on growing the parks and parks system
- The 2005 plan was also completed during the “period of significant population growth”

The demographics of Sandy are different today, where there is a shift from high growth to infill development



Previous Planning Efforts

- The Trails Master Plan was updated in 2019
- The Active Transportation Plan was completed in 2020

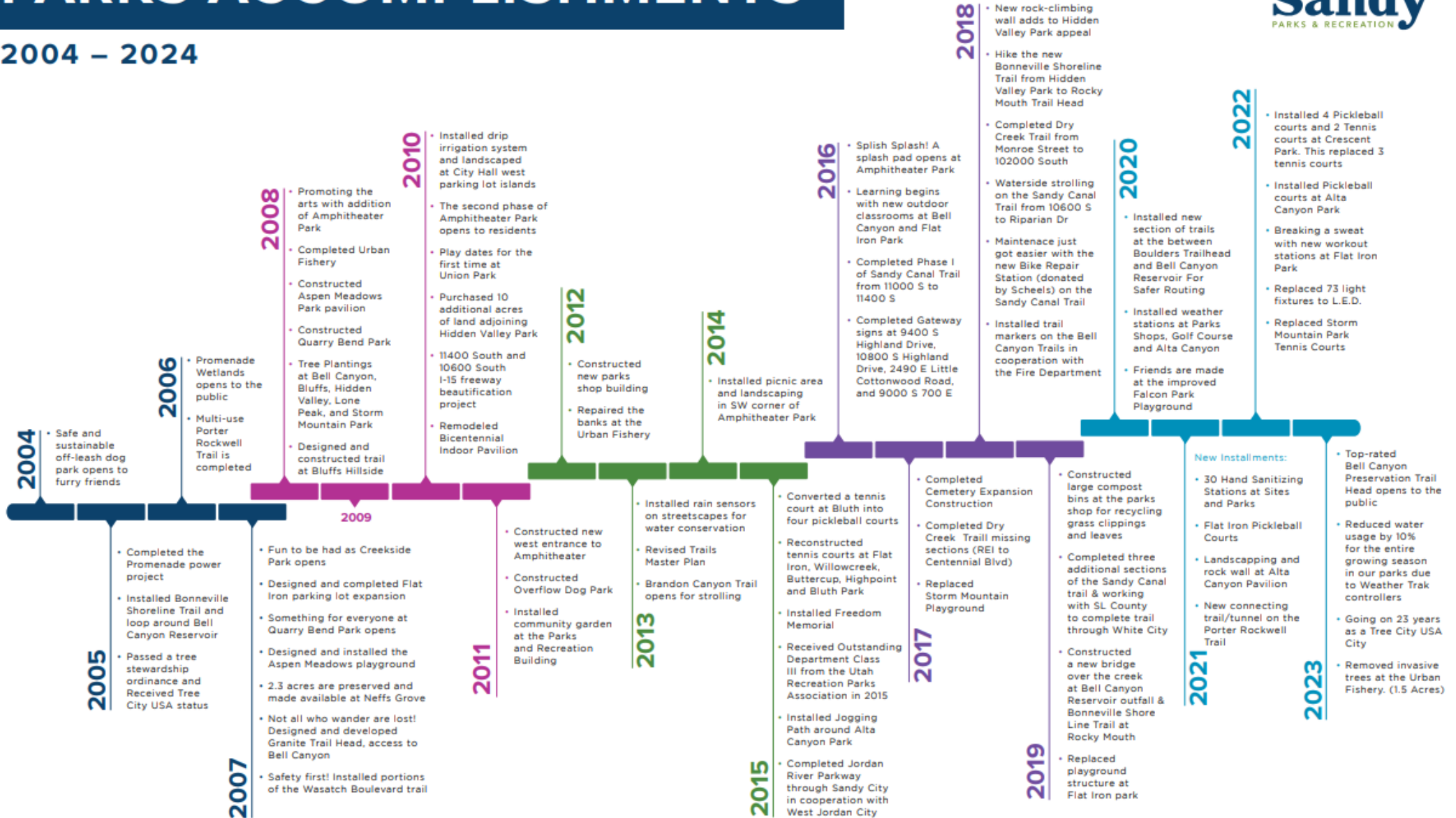
These plans helped to inform the Parks, Recreation, and Trails Master Plan



20 YEARS OF PARKS ACCOMPLISHMENTS



2004 – 2024



Document Layout

7 chapters:

- Parks System
- Individual Park Evaluations
- Public Engagement Summary
- Trails
- Recreation
- Irrigation
- Implementation Plan



Document Format

Each chapter contains:

- **Patterns and trends assessment** to better understand current trends in other parks systems and human behavior
- **Existing condition analysis** to identify strengths and opportunities within Sandy's current system
- **Best Practice** methods, case studies, or techniques to achieve plan the goals
- **Goals and strategies** to achieve over the next 20 years



Technical Analysis

- Park Inventory
- Trail Inventory
- Park-acre Ratio (how many acres per 1,000 residents)
- National Recreation and Parks Association (NRPA) Metrics
- Participation Numbers
- Demographic Data
- Walkshed Analysis
- SWOC Analysis

Park Name	Pebble Glenn Park
Address	770 E 9085 S
Acreage	0.31
Indoor Pavilion	No
Outdoor Pavilion	Yes
Restroom	No
Parking Stalls	0
BBO pit	No
Playground	Yes
Jogging Path	0
Baseball	0
Baseball lighting	No
Basketball	0
Basketball lighting	No
Soccer Field	0
Soccer lighting	No
Softball	0
Softball lighting	No
Tennis	0
Tennis lighting	No
Volleyball	0
Volleyball lighting	No
Electrical	No
Water	No
Other	
Management Priority	Active Park

YES

NOTES:
 PICNIC TABLE: 11
 TRASH: 1
 H2O FOUNTAIN: 1



• SMALL BUT NICE TREE CANOPY
 • MINOR GRAFFITI
 • GOOD ACCESS TO LOCAL NEIGHBORHOODS

SANDY PARKS MASTER PLAN SITE VISIT, APRIL 17-18

Park Name	Hidden Valley Park
Address	11700 S Wasatch Blvd
Acreage	49.29
Indoor Pavilion	no
Outdoor Pavilion	11 tables
Restroom	yes
Parking Stalls	50
BBO pit	yes
Playground	yes
Jogging Path	0.67
Baseball	0
Baseball lighting	no
Basketball	0
Basketball lighting	no
Soccer Field	0
Soccer lighting	no
Softball	0
Softball lighting	no
Tennis	0
Tennis lighting	no
Volleyball	0
Volleyball lighting	no
Electrical	yes
Water	yes
Other	
Management Priority	Mix-use Park

45 (2 ADA)

CONNECTION



BONANZA TRAIL

NOTES:
 BLUE TRASH: 11 GAZEBO: 1
 TRASH: 111 PICNIC TABLE: 1
 BENCH: 1111111 COVERED TABLE: 1
 CONC. SEAT WALL: 1111111 COVERED BENCH: 11
 HAND SANITIZER: 1 DOG-1-POST: 1

SANDY PARKS MASTER PLAN SITE VISIT, APRIL 17-18



5

1. Satisfaction with parks, trails, recreation and open spaces in Sandy City is **very high, with all having at least 70% satisfaction or higher**. Most respondents also say the city has the **right amount of each of these amenities**, but **48% of respondents say there are too few open spaces**. **Familiarity with recreation programs is low at slightly more than 50%**.
2. Usage of and satisfaction with parks in Sandy is **very high, with over half of respondents saying they use parks a few times a month or more**. A high proportion of respondents say **no improvements are needed to parks**.
3. Respondents say they use trails in Sandy **less often than they visit parks, with only 1 in 3 saying they use them a few times a month or more**. In terms of improvements to trails, there is **broad interest in linking trails to neighborhoods, completing trails and creating a more connected trail system**.
4. Very few respondents in our sample **have participated in a recreation department program during the past 2 years**. Respondents say this is mainly due to **age or lack of interest**, and there are few suggestions for additional programs the city could offer that would interest them.
5. When asked to allocated funds from a hypothetical budget, the items that have the highest support are related to **open spaces, trails, and parks**. Respondents are split on **whether the city should focus on improving existing amenities or developing new ones, with most showing preference for some mix of the two**. Between the two extremes, there is a slight preference for improving existing amenities.

KEY FINDINGS



THE VISION:

PROVIDING EXCEPTIONAL PROGRAMS AND FACILITIES TO ENHANCE THE ENVIRONMENT AND THE LIVES OF THE PEOPLE WE SERVE

PARKS SYSTEM GOALS:

- ENSURE THAT EXISTING AND FUTURE RESIDENTS OF SANDY CONTINUE TO HAVE ACCESS TO PARKS AND RESOURCES
- MORE WIDELY DISTRIBUTE PARK AND RESOURCES TO UNDERSERVED AREAS
- USE PARKS AS AN OPPORTUNITY TO ADDRESS ECOLOGICAL/ENVIRONMENTAL NEEDS IN THE CITY
- SANDY PARKS CONTINUE TO CONTRIBUTE TO THE OVERALL LIVABILITY OF SANDY NEIGHBORHOODS AND SATISFACTION
- UNDEVELOPED OPEN SPACE IS ACQUIRED FOR CONSERVATION AND RECREATION

TRAIL SYSTEM GOALS:

- SANDY CITY TRAILS SYSTEM CONNECTS SANDY PARKS AND OTHER PUBLIC AMENITIES
- ENHANCE THE TRAIL USER EXPERIENCE
- CONTINUE TO SUPPORT IMPLEMENTATION OF THE ACTIVE TRANSPORTATION PLAN

RECREATION GOALS:

- PROVIDE RECREATION OPPORTUNITIES FOR SANDY RESIDENTS OF ALL AGES AND ABILITIES

IRRIGATION GOALS:

- IDENTIFY OPPORTUNITIES TO REDUCE WATER USE IN CITY PARKS WHILE MAINTAINING A HIGH LEVEL OF SERVICE



2023 SYSTEM SNAPSHOT

PARK BREAKDOWN

13

POCKET PARKS

Pocket parks are intended to be less maintained and less programmed than conventional neighborhood or community parks and are intended to fill in gaps where a larger park may not be accessible to residents.

14

NEIGHBORHOOD PARKS

These parks provide amenities such as basketball courts, perimeter walking loops, picnic areas, playgrounds, and open fields are common amenities.

6

COMMUNITY PARKS

These parks are created to fulfill the requirements of the entire community by offering a variety of attractions. Amenities in these parks include parking spaces designed for more traffic than just the immediate community, restrooms, ball fields, pickle ball, pavilions, walking trails, and more unique amenities, such as water features and amphitheatres.

4

REGIONAL PARKS

Regional Parks are the largest and most amenity dense parks within the Parks System. These parks contain amenities that serve the entire city/region.

2

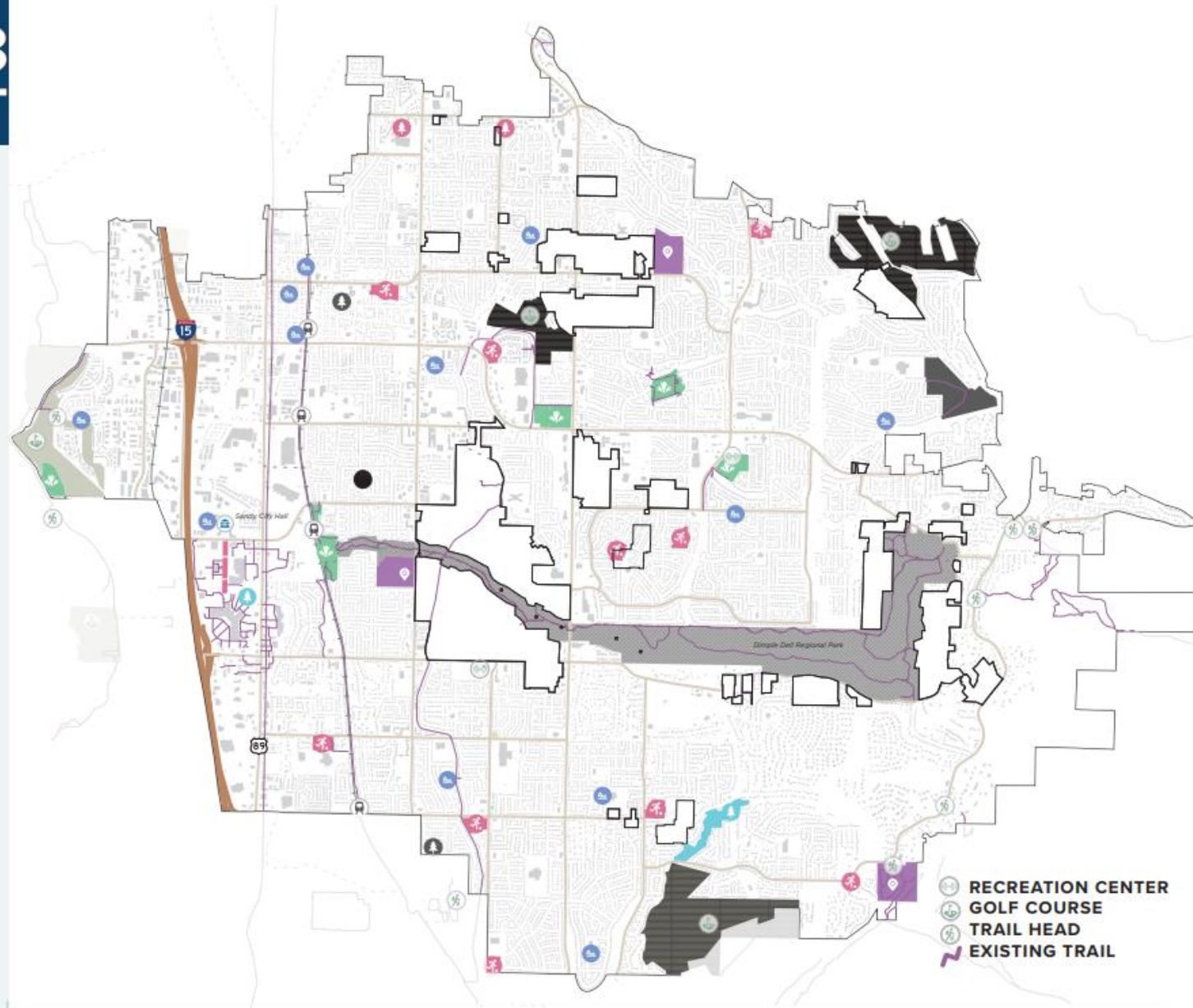
NATURAL PARKS

As Natural Areas, these parks are very minimally developed. While there are vast natural areas right outside of Sandy's borders, these areas are surrounded by development and offer a different kind of experience.

4

NON-CITY OWNED AND MANAGED

These areas are either privately owned or owned by Salt Lake County. Although not owned by Sandy City, these areas are open for residents to use (sometimes by a fee). Dimple Dell Park falls into this category.



39 TOTAL PARKS • 1 GOLF COURSE • 1 RECREATION CENTER
9 TRAILHEADS • 9.75 PARK-ACRE RATIO • 87.5% RESIDENT WALKSHED

Park-Acre Ratio

- How many acres of park space per 1,000 residents
- Sandy population: 98,296
- Recommended range: **6.25-10.5 per 1,000 residents**
- **Two ratios:**
 - City parks only: **3.34**
 - Including County Parks (Dimple Dell, Granite) and Bell Canyon Reservoir: **11.20**

TABLE 1.1: PARK-ACRE RATIO COMPARISON

MUNICIPALITY	PAR
Draper	38.40
Salt Lake City	29.32
Cottonwood Heights	13.75
South Jordan	11.85
Sandy	11.20
Lehi	6.69
West Jordan	3.18
Midvale	1.81

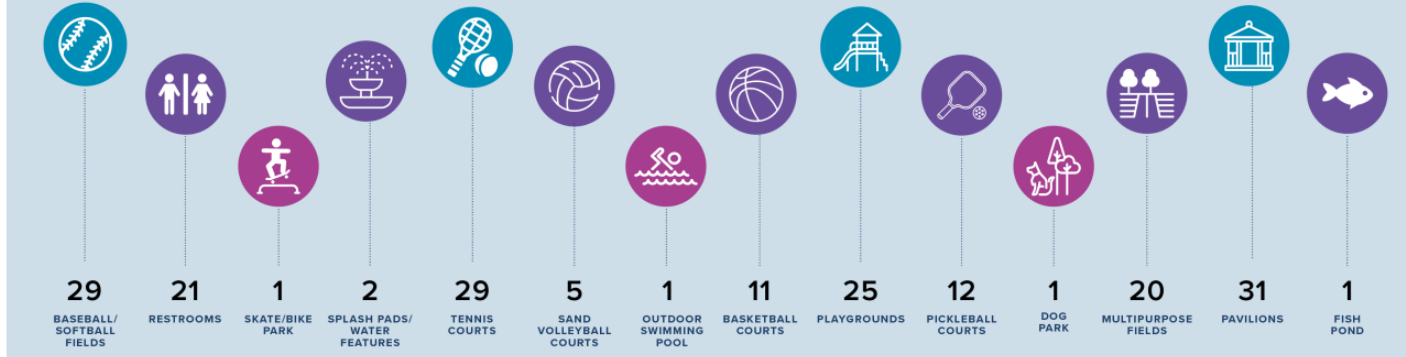
Source: Trust for Public Land

¹ This service assessment is for planning purposes only, and is different than levels of service used in determining impact fees



System Amenities

THE BEST OF SANDY:



Public Engagement shows that 95% of residents are not interested in seeing more sports fields in the city. Instead of fields, they are more interested in seeing more natural open spaces, urban trails, and connections to the canyons.

TABLE 1.2: NRPA AMENITY COMPARISON

AMENITY	QUANTITY OF EXISTING AMENITY	2023 SANDY AMENITY RATIO	AMENITY RATIO BASED ON NRPA STANDARDS	QUANTITY TO MEET NRPA RATIO	2023 SURPLUS OR DEFICIT
Pavilions	31	3,161	--	--	--
Restrooms	21	4,667	--	--	--
Playgrounds	25	3,920	3,779	26	-1
Basketball Courts	11	8,909	8,790	11	0
Baseball/Softball Fields	29	3,379	24,945	4	25
Tennis Courts	29	3,379	5,577	18	11
Pickleball Courts	12	8,167	11,150	9	3
Multipurpose Fields*	20	4,900	13,244	7	13
Sandy Volleyball Courts	5	19,600	--	--	--
Skate/Bike Park	1	98,000	62,927	2	-1
Splash Pads/ Water Features	2	49,000	--	--	--
Dog Parks	1	98,000	54,119	2	-1
Indoor or Outdoor Swimming Pools	1	98,000	43,100	1	-1

*Note that Sandy residents have access to multipurpose fields at local schools. The fields are not included in this table because the city does not own or manage them

Source: 2023 NRPA Agency Performance Review



Walkshed Analysis



WHY IS A 10-MINUTE WALK TO A PARK IMPORTANT?

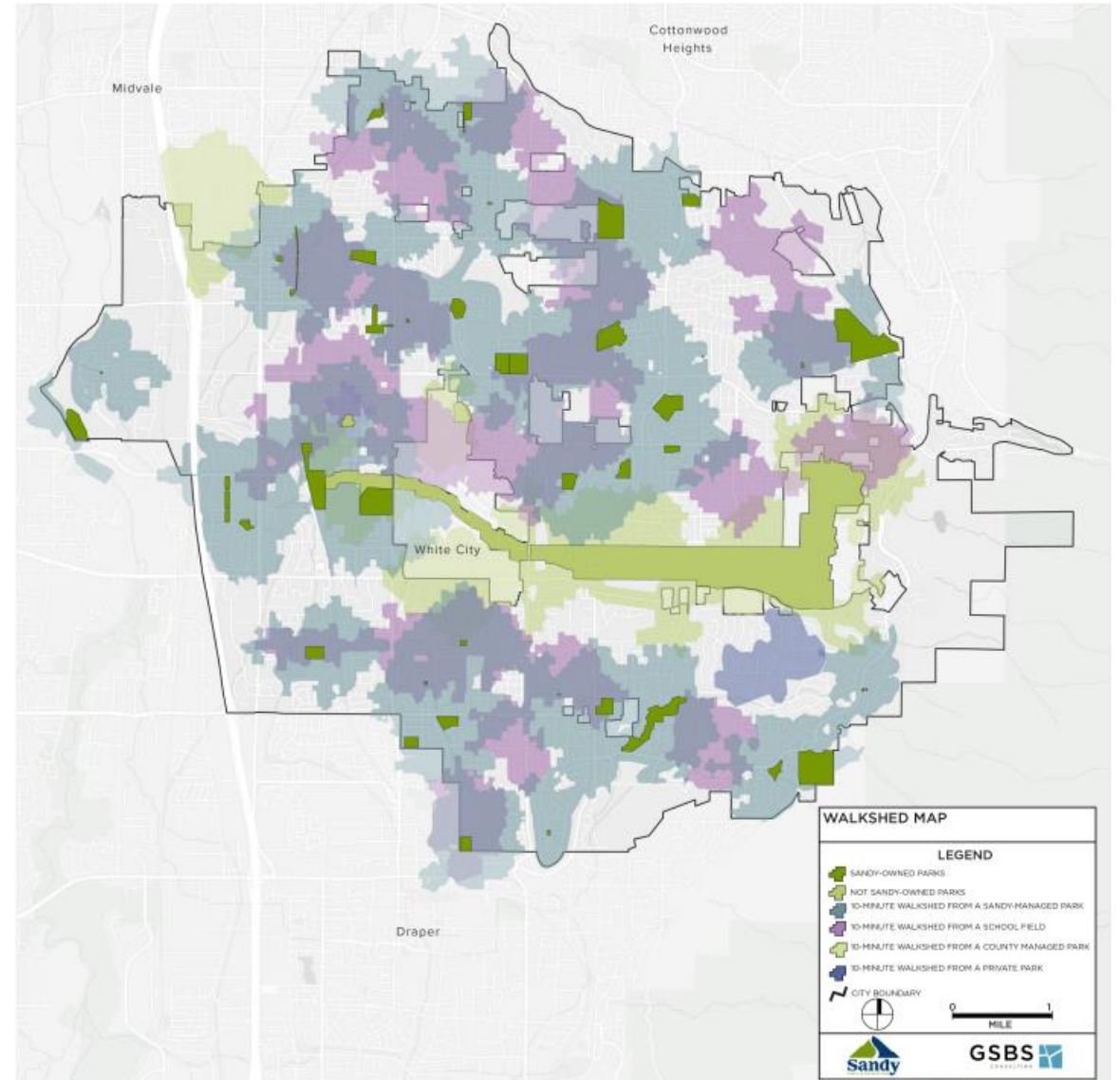
Access to parks is critical for our physical, emotional, and mental health and well-being—no matter what age you are.

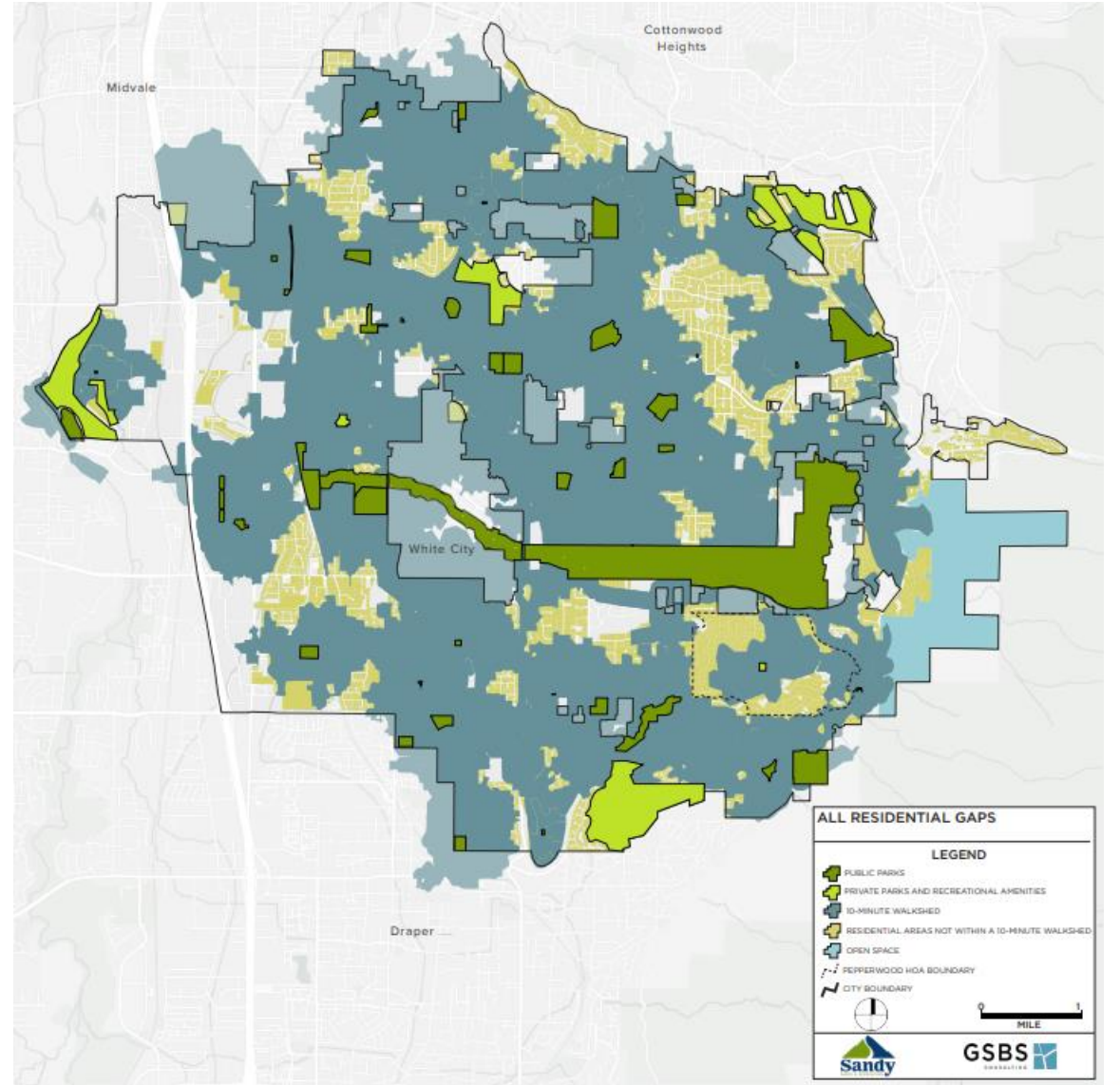
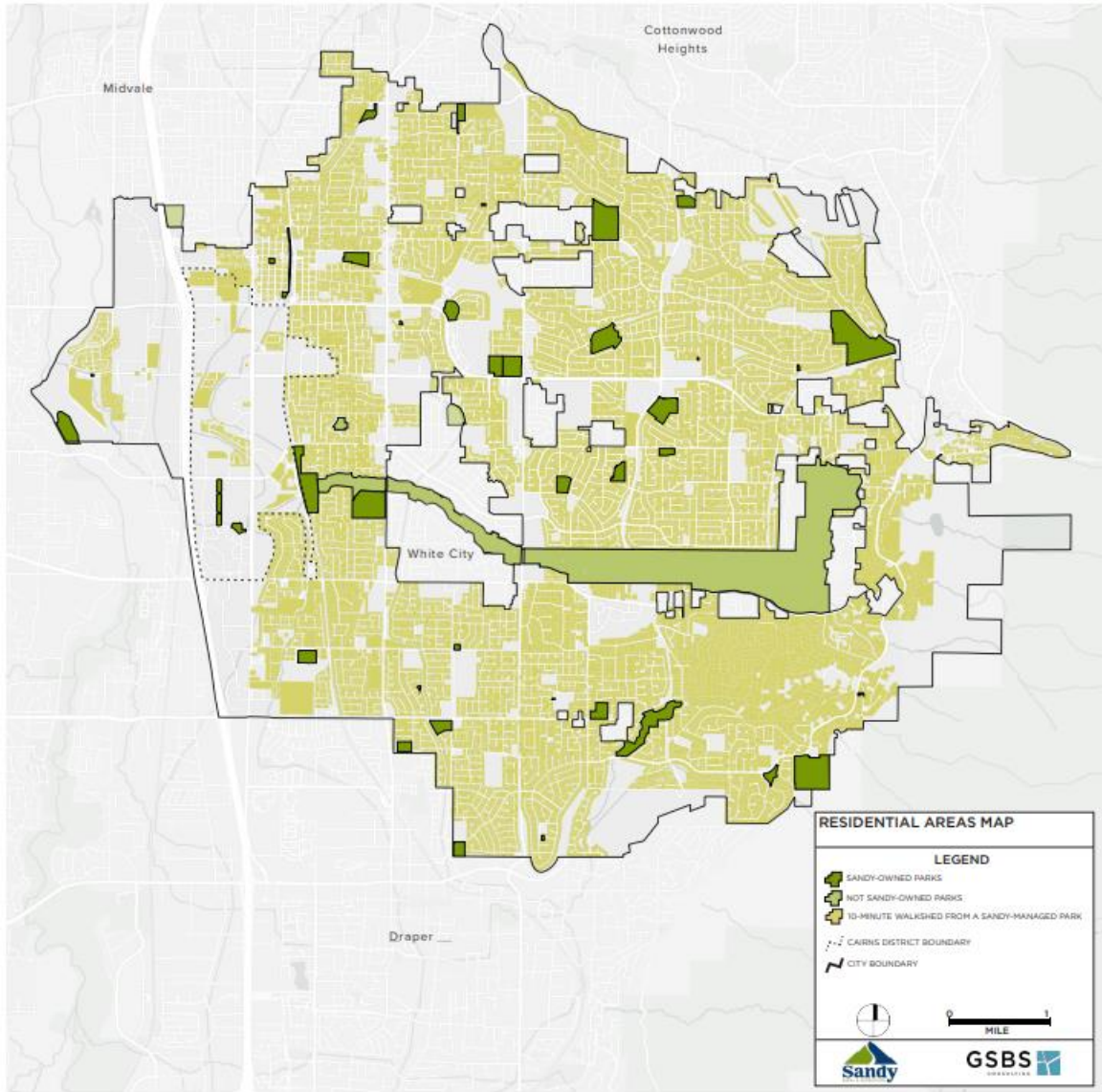
People with easy access to parks are shown to get better exercise, lower the effects of those living with ADHD, help with surgery recovery, and improve health outcomes.

87.5% OF SANDY RESIDENTS LIVE WITHIN A 10-MINUTE WALK TO SOME SORT OF PUBLIC PARK OR OPEN SPACE

The national average is 55% (TPL).

This also means that about 8,500 citizens of sandy do not live within a 10-minute walk to a park.



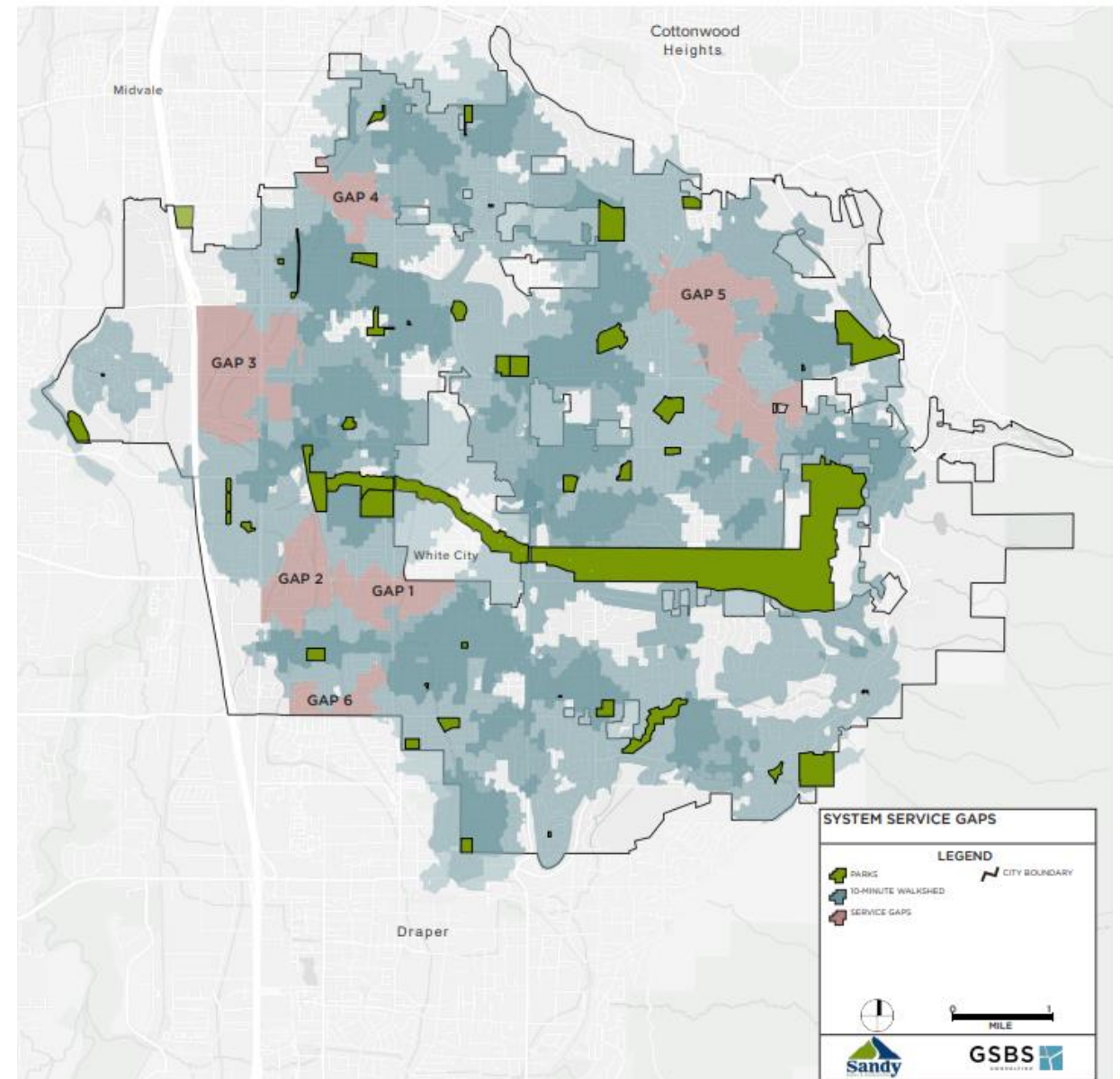


Priority Gaps

TABLE 1.4: PARK-ACRE RATIO COMPARISON

GAP	POPULATION DENSITY	POPULATION	POPULATION TRAJECTORY	MEDIAN HOUSEHOLD INCOME	% OF INCOME FOR MORTGAGE	COUNTS	PRIORITY
Gap 6	21.89	1,856	up	\$87,962	38.9%	4	1
Gap 4	15	1,764	stable	\$89,683	33.4%	2	2
Gap 1	8.52	1,346	up	\$92,250	36.3%	2	3
Gap 3	3.88	1,456	up	\$67,518	30.6%	2	4
Gap 2	7.66	1,388	up	\$102,020	31.0%	1	5
Gap 5	9.66	1,341	down	\$127,105	26.6%	1	6

Source: ESRI Business Analyst 2023



GOALS & STRATEGIES

GOAL

ENSURE THAT EXISTING AND FUTURE RESIDENTS OF SANDY CONTINUE TO HAVE ACCESS TO PARKS AND RESOURCES

POLICY

Increase the number of households within a 10-minute walkshed to a city-owned park, school field, or County managed facility from 87.5% to 93%

- Close walkshed gaps by increasing connectivity options and adding recreation opportunities
- Acquire and develop parkspace in the western portion of the city
- Create opportunities for parks to co-locate with Neighborhood Activity Centers to expand recreational access in Gap 5
- Acquire Canyons School District Land for new Parks should the District decide to close schools
 - Acquire Crescent Middle School should the District want to close and sell
- Continue to work with the school district and alternative schools to maintain and invite community activity on their campuses outside of school hours

POLICY

Maintain a level of service (city parks) of 3.34 park acres per 1,000 population as population increases

- Ensure that Quail Hollow Park is developed into a recreational asset for the community
- Ensure that Pond Park is developed into a recreational asset for the community
- Ensure that the vacant space at 8800 South is developed into a recreational asset for the community
- Ensure park space is developed in the Cairns District to equal 5-acres

POLICY

Continue to require developer-provided greenspace or amenities in new developments

POLICY

Undeveloped open space is acquired for conservation and recreation

GOAL

MORE WIDELY DISTRIBUTE PARK AND RESOURCES TO UNDERSERVED AREAS

POLICY

Park acres and amenities are accessible to all neighborhoods within the city

- Coordinate with the Planning Department on the implementation of General Plan goals and strategies to add Neighborhood Activity Centers through the city that may include public gathering and open spaces
- Explore the use of small-scale public spaces, such as parklets, plazas, and pocket parks to better activate and provide respite and amenities for the trail system
- Distribute unique amenities spatially throughout the city
 - Prioritize a percentage of park impact fees for amenities in neighborhoods experiencing growth
 - Use General Funds to address system deficiencies, modifications and maintenance
 - Update park amenities spatially (one year on the West side, one year on the east, one year to the south, etc.)
- Increase beloved Sandy amenities in other areas, including:
 - Splashpad
 - Skate/bike Park
 - Dog Park
 - Pickleball

GOAL

USE PARKS AS AN OPPORTUNITY TO ADDRESS ECOLOGICAL/ ENVIRONMENTAL NEEDS IN THE CITY

POLICY

Park landscaping demonstrates best practices to preserve natural resources

- Increase tree coverage in parks
 - Take advantage of the mature trees already existing in the parks and increase programming underneath.
- As parks redevelop, identify areas of localscape within the parks or park strips, when appropriate

GOAL

SANDY PARKS CONTINUE TO CONTRIBUTE TO THE OVERALL LIVABILITY OF SANDY NEIGHBORHOODS AND SATISFACTION

POLICY

Include residents in design and implementation of the parks system

- Provide opportunities for community members to engage with park planning, programming, preservation, maintenance, and enhancement
- Enhance safety and enjoyability in parks by incorporating the strategies of Crime Prevention through Environmental Design during the design process
- Promote public awareness and education of the City's parks system and amenities



Individual Park Evaluations

ALTA CANYON PARK

Alta Canyon Park is just over 10 acres and is located next to the city owned and managed recreation center. While the recreation center has a small fee, the park is open and free to the public to use. The park is dominated by the two ballfields where league play is held April through June. The grass outfields are also used in late summer and fall for soccer, training, and other sports.

With this park and recreation center complex housing many amenities, the level of service is quite low with the park being within a 10-minute walk to a park for under 2,000 people. This is due to the surrounding neighborhoods being cut off by the shopping center. As redevelopment occurs at Alta Canyon Shopping Center, special consideration should be made to connecting the neighborhoods through to the park. Improved Highland Drive crossings should also be prioritized.

With the recreation center bringing in people from all over the city, special uses such as a skate park or dog park can be added to the closed tennis court area or the vacant berm east of the recreation center to activate the park at more hours and bring more outdoor programming to the recreation center area to form a complex.



10.01
ACRES

LEVEL OF SERVICE

ACRES PER POPULATION WITHIN A 10-MINUTE WALK

2023: **5.55**

2027: **5.62**

1,803
POPULATION

POPULATION BY AGE



Under 10 (24.9%) 10-19 (16.64) 20-29 (14.7%)

756
HOUSEHOLDS

2.38
AVERAGE SIZE
HOUSEHOLD

\$119,582
MEDIAN HOUSEHOLD
INCOME

\$447,904
MEDIAN HOME VALUE

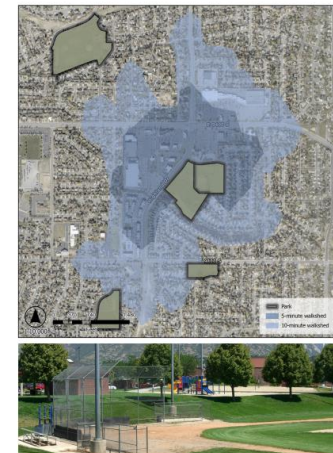
RECOMMENDATIONS

Replace/upgrade Recreation center	<p>LOCALSCAPE CONVERSION RATING (REFER TO PAGE 26)</p>
New playground	
Explore addition of a skatepark and/or dog park on the undeveloped land behind the recreation center	
Upgrade surfacing at the fitness stations	
Add shade structures to the fitness station and playground areas	
Could support more pickleball	
Sidewalk addition along Highland Drive	
Improve intersection at Highland Drive and Alta Canyon Shopping Center with Crosswalks	

CAN WE LOOK INTO ANOTHER DOG PARK ON THIS SIDE OF SANDY?

...PRESERVE OUR GRASS BALLFIELDS AT ALTA CANYON SPORTS CENTER. THEY GET TONS OF USE...

WALKSHED MAP



AMENITIES & SUPPORT FACILITIES

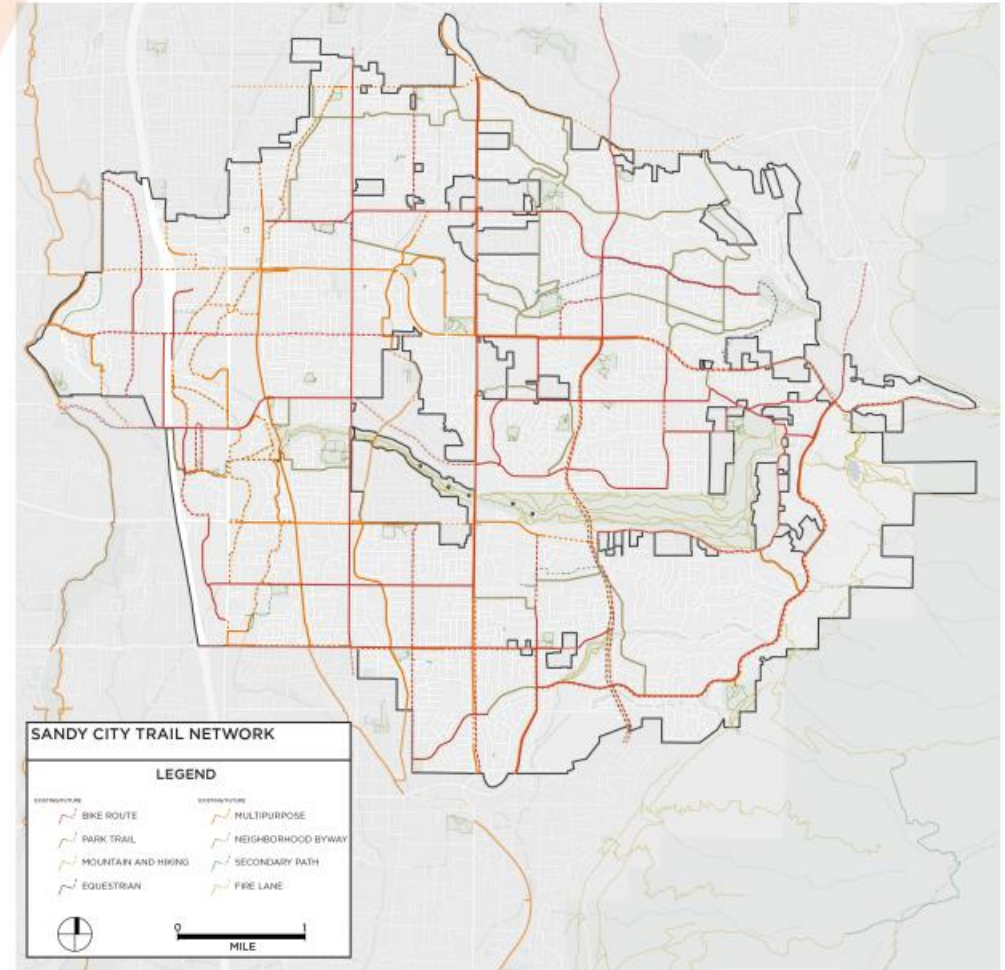
	Parking Stalls	212
	Trash Bins	16
	Pickleball Courts	4
	Benches	6
	Outdoor Tables	12
	Restroom	✓
	Playground	✓
	Jogging Path	✓
	Baseball Field	2
	Baseball Lighting	✓
	Soccer Field	1
	Soccer Lighting	✓
	Tennis Courts	4
	Tennis Lighting	✓
	Volleyball Courts	2
	Electrical	✓
	Water	✓
	Swimming Pool	✓
	Active Park	✓



Trails

- Strengths
 - Variety in form and location
 - Scenic views
- Weaknesses
 - Street Identity and wayfinding
- Opportunities
 - Park adjacencies to trails
- Challenges
 - Street—Trail intersections

FIGURE 2.1: SANDY CITY TRAIL NETWORK- EXISTING AND FUTURE



Street—Trail Intersections and Safety

- TREND: Trails for recreation over commuting
- What does this mean?
 - More novice trail users
- Safety concerns center around on-road biking

McClelland Street in Salt Lake City is a prime example of how the vehicular traffic streets bisecting the trail can be treated to enhance pedestrian safety and give a more cohesive look to the trail system.



FIGURE 2.4: PEDESTRIAN AND BICYCLE ACCIDENTS IN SANDY



	2017	2022
# of pedestrian involved fatalities	3	1
# of pedestrian involved injuries	29	21
# of pedestrians involved in a crash	34	30



	2017	2022
# of bicycle involved fatalities	0	0
# of bicycle involved injuries	17	17
# of bicycles involved in a crash	17	21

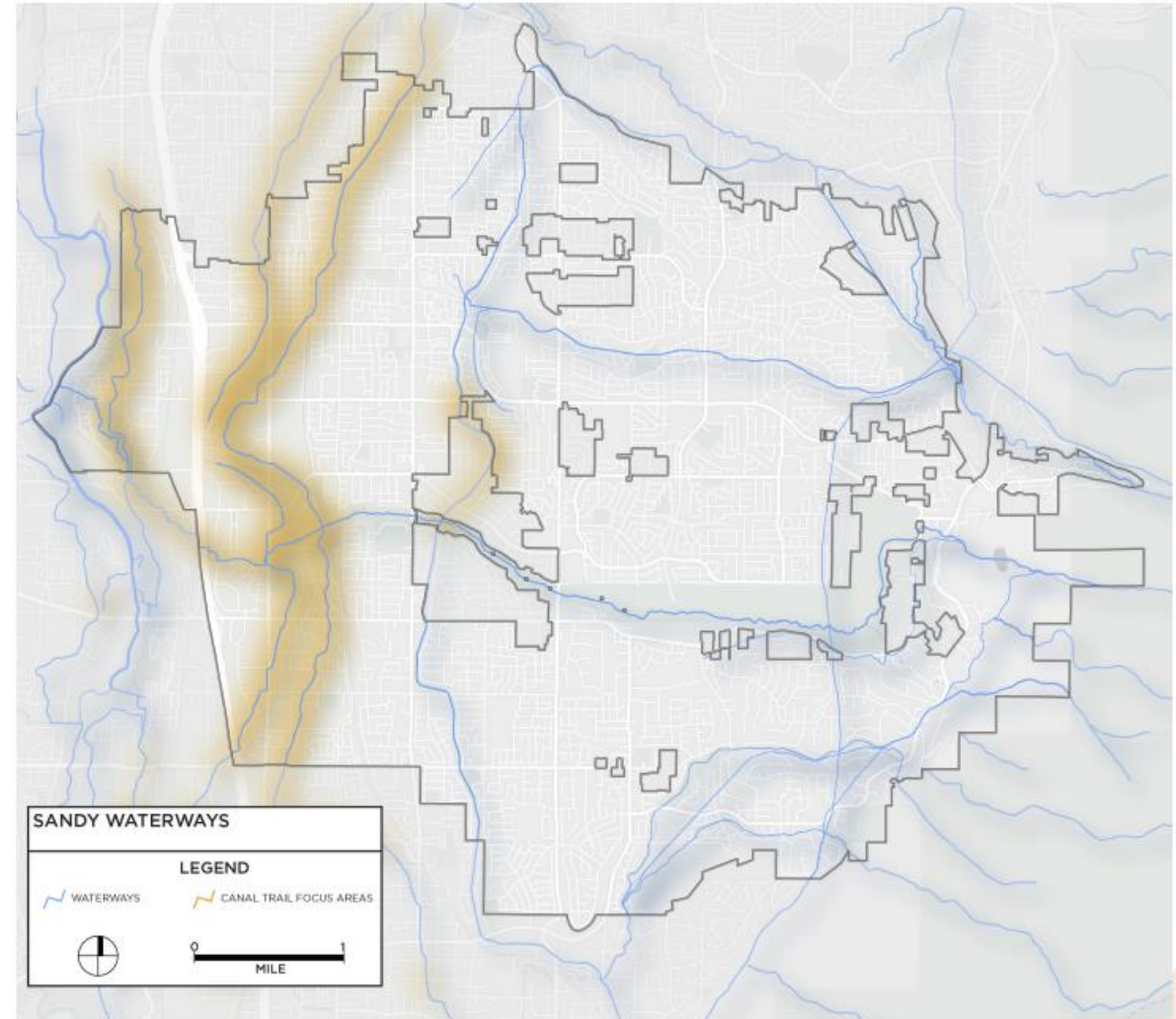
Source: Utah Department of Public Safety Dashboard Portal



Canal Trails

- There are around 18 canals in Sandy
- Great example: Sandy Canal Trail
- There is funding to implement more canal trails, and it is a priority to implement more trails along canals
- This also provides a great opportunity for Off-Road trails

FIGURE 2.3: SANDY WATERWAYS



GOALS & STRATEGIES

GOAL

SANDY CITY TRAILS SYSTEM CONNECTS SANDY PARKS AND OTHER PUBLIC AMENITIES

POLICY

Take advantage of other connectivity elements and rights of way within the city

- Upgrade streetscapes, landscaping, and explore incorporation of public art along key pedestrian corridors and trails
- Work with canal companies to create trails along Sandy canals
- Integrate trail connections as new roads are built
- Work with the County to develop additional trailheads as planned to improve the access to Dimple Dell Regional Park
- Continue work with Public Works to implement a Safe Routes to Schools program
 - Emphasis on trail use and connections

GOAL

ENHANCE THE TRAIL USER EXPERIENCE

POLICY

Address safety concerns

- Enhance crossings on key pedestrian trails
- Enhance and add more bicycle connections
 - Work with Public Works to have buffered or off-street bike lanes on street 35mph or higher
- Repair walking paths to comply with ADA standards inside the parks

POLICY

Address trail user comfort

- Enhance or establish new connections to the Cairns District, City Hall, & The Promenade
- Increase wayfinding and signage at trailheads

GOAL

CONTINUE TO SUPPORT IMPLEMENTATION OF THE ACTIVE TRANSPORTATION PLAN

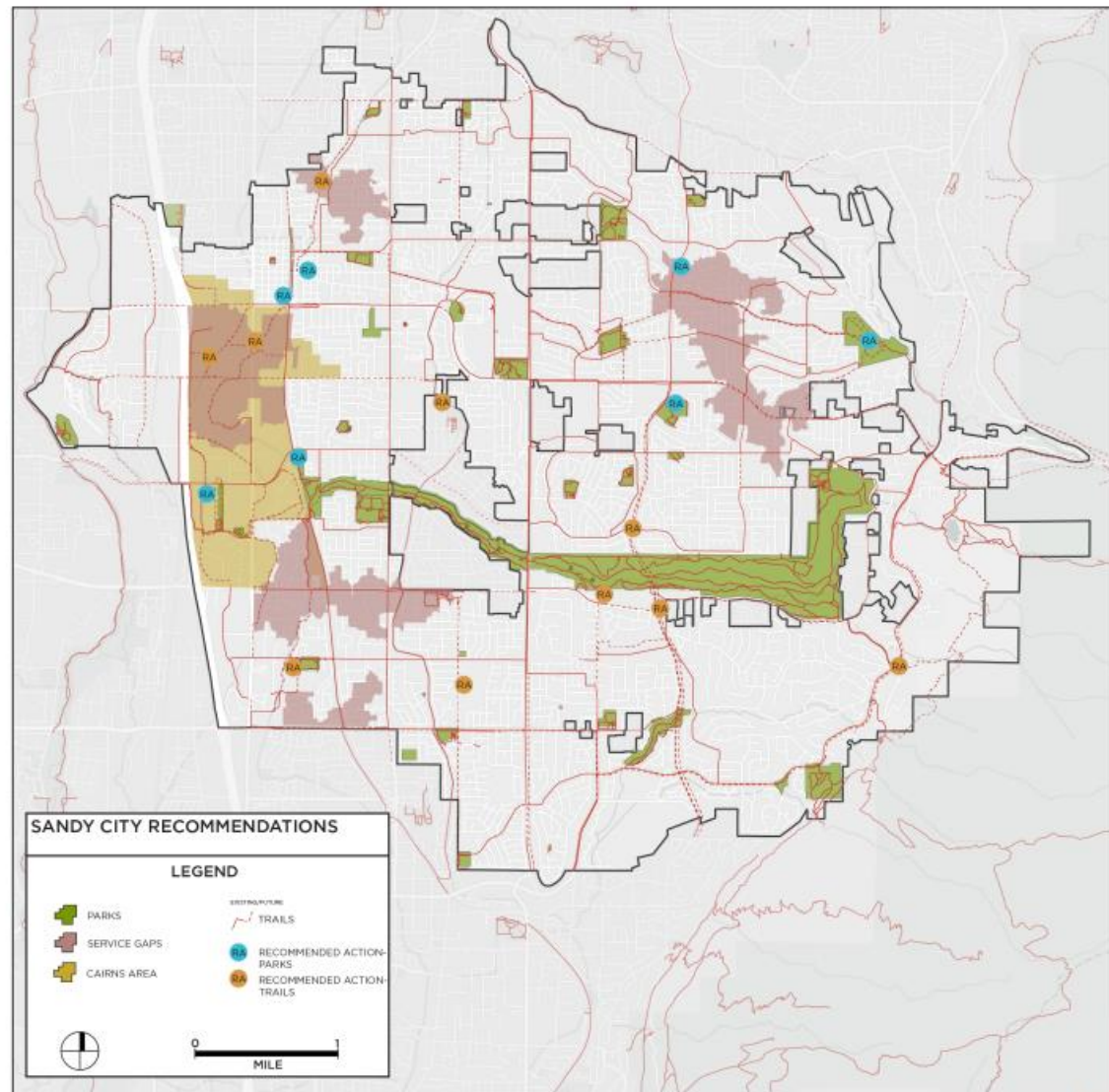


FIGURE 2.5: RECOMMENDATIONS



Recreation

- TRENDS:
 - Adult and senior programming
 - E-sports
 - Social Cohesion over recreation

STRONGEST PERFORMING RECREATION PROGRAMS
Youth soccer
City-wide races
Youth basketball
Pickleball

LOWEST PERFORMING RECREATION PROGRAMS*
Hiking club
Girls Softball
Volleyball
Lego Camp
Karate

* This is not a recommendation to remove these programs. These programs have lower attendance because of attendance caps, restricted age participation, and/or niche sports

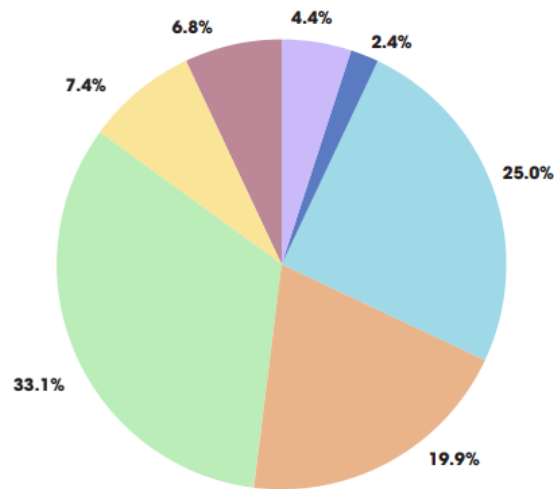
Pre-Pandemic Recreation Program Participation	36,566
Pre-Pandemic Alta Canyon Memberships	2,240
2022-2023 Program Participation	28,932
2022-2023 Memberships	1,536
Pre-Pandemic % Residents participating in Recreation Programming	38%
Pre-Pandemic % Residents with Alta Canyon Memberships	2.3%
% Residents participating in Programming	30%
% Residents with memberships	1.6%
% Change participating in Programming	0.7%
% Change of memberships	8%



Why are people participating less in recreation?

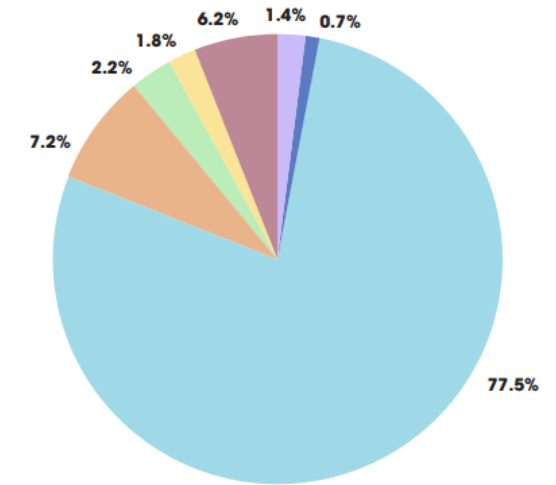
- 44.9% of respondents' answers have to do with **age**

WHAT IS THE PRIMARY REASON YOU OR MEMBERS OF YOUR HOUSEHOLD HAVE NOT PARTICIPATED IN A SANDY RECREATION DEPARTMENT PROGRAM IN THE PAST TWO YEARS?



- Physically or financially unable to participate or other concern such as COVID-19
- Lack of program that fits my needs
- Old age
- Don't have children or children are aged of programs
- Too busy or not interested
- Participating in recreation elsewhere
- Lack of awareness about programs

ANY ADDITIONAL MEANS OF COMMUNICATION THE RECREATION DEPARTMENT SHOULD BE USING?



- Information on website or an app
- Amphitheater sign
- None
- Emails
- Social media outreach
- Text messages
- Print material/mailers



GOALS

GOAL

PROVIDE RECREATION OPPORTUNITIES FOR SANDY RESIDENTS
OF ALL AGES AND ABILITIES

POLICY

Ensure that sandy recreational facilities support the implementation of facilities for everyone

- Replace Alta Canyon Sport Center
- Explore the creation of a satellite recreation or community center near the Promenade
- Explore additional adult programming focused around social cohesion
 - Identify community partners to expand and coordinate offerings for adults and seniors

POLICY

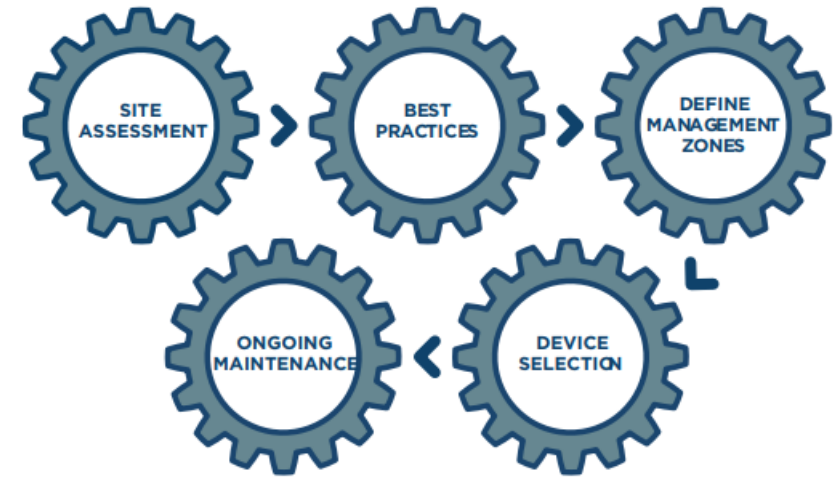
Ensure that recreational opportunities are available year-round and in all types of weather

- Explore additional summer programming for youth
- Identify community partners to expand and coordinate offerings for youths in the summer
- Ensure that recreational centers have indoor recreational opportunities for walking and other non-strenuous recreational activity



Irrigation

- GOAL: IDENTIFY OPPORTUNITIES TO REDUCE WATER USE IN CITY PARKS WHILE MAINTAINING A HIGH LEVEL OF SERVICE
- Policy: implement next practices in the design, maintenance, and operations of irrigation system
- Policy: identify opportunities to replace park turf with waterwise landscaping



Edits to be made

- Park address to each of the park pages
- HAWK access over 9400 South to Amphitheater Park
- Mention of the Flashing Beacon Crossing added at Bryce Drive to Union Park
- Various amenity additions to parks
 - Tennis courts at Bell Canyon
 - Pickleball at Flat Iron Mesa
 - Picnic tables at Lone Peak
 - Playground at Urban Fishery
 - Tennis courts at South Valley Tanks
- Page 119 grammatical edits

