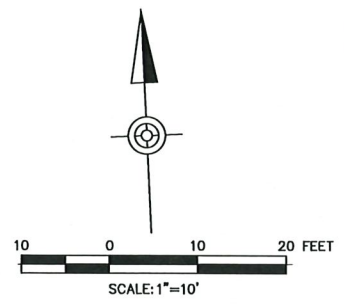
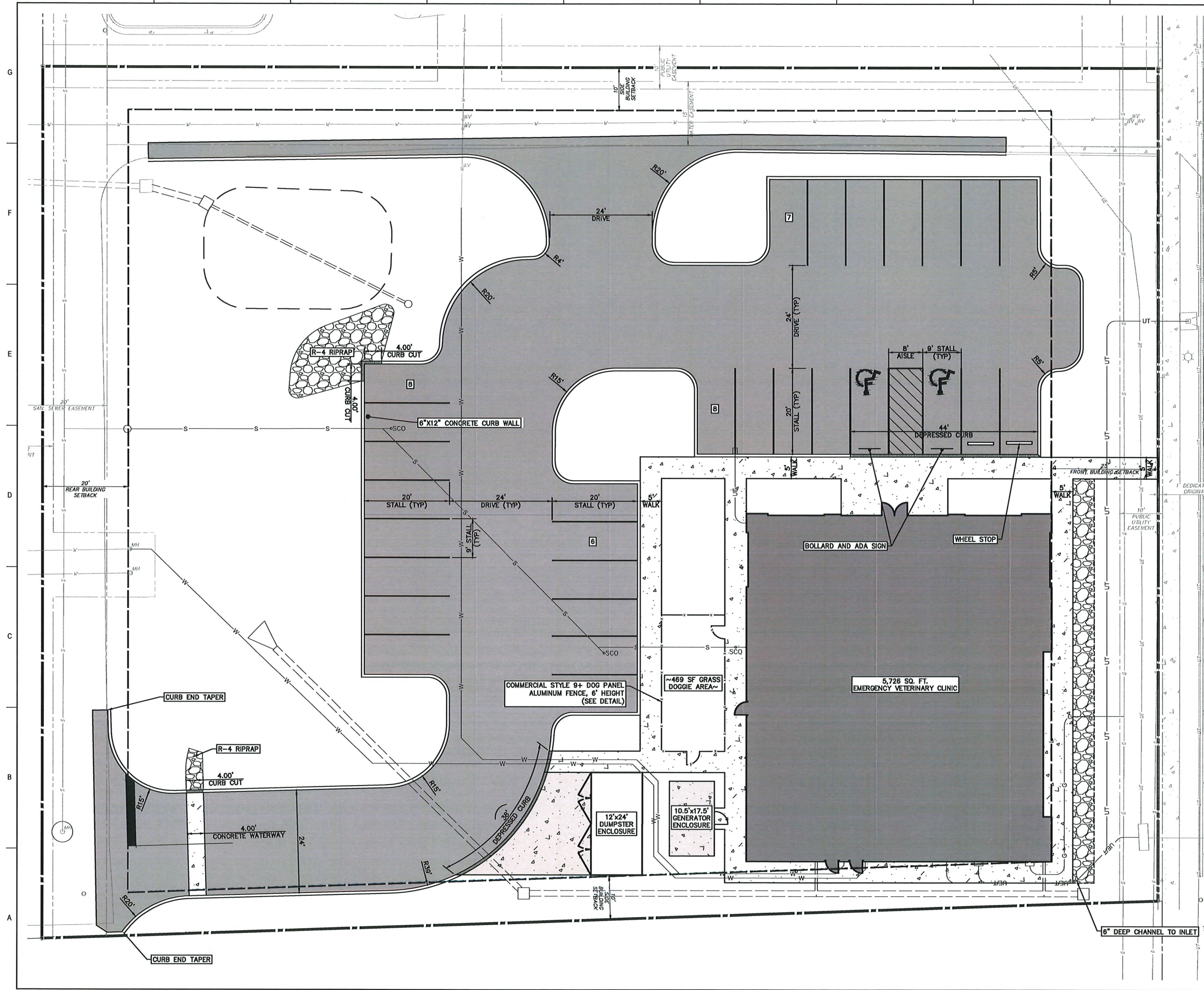


\\lbg\projects\12956-02\070 - Site\dwg\12956-02\Plat Sub.dwg, 02/01/2023 10:46:48 AM, Frank, Matthew



- NOTES:
 1. ALL CURBS SHALL HAVE A 6" REVEAL
 2. ALL CURB RADII ARE 5' UNLESS OTHERWISE NOTED.

LDG
 Larson Design Group
 1000 COMMERCE PARK DRIVE
 SUITE 201
 WILLIAMSPORT, PA 17701
 (877) 323-6603

PROFESSIONAL ENGINEER
 No. 12180140-2002
 CHRISTOPHER SHEAFFER

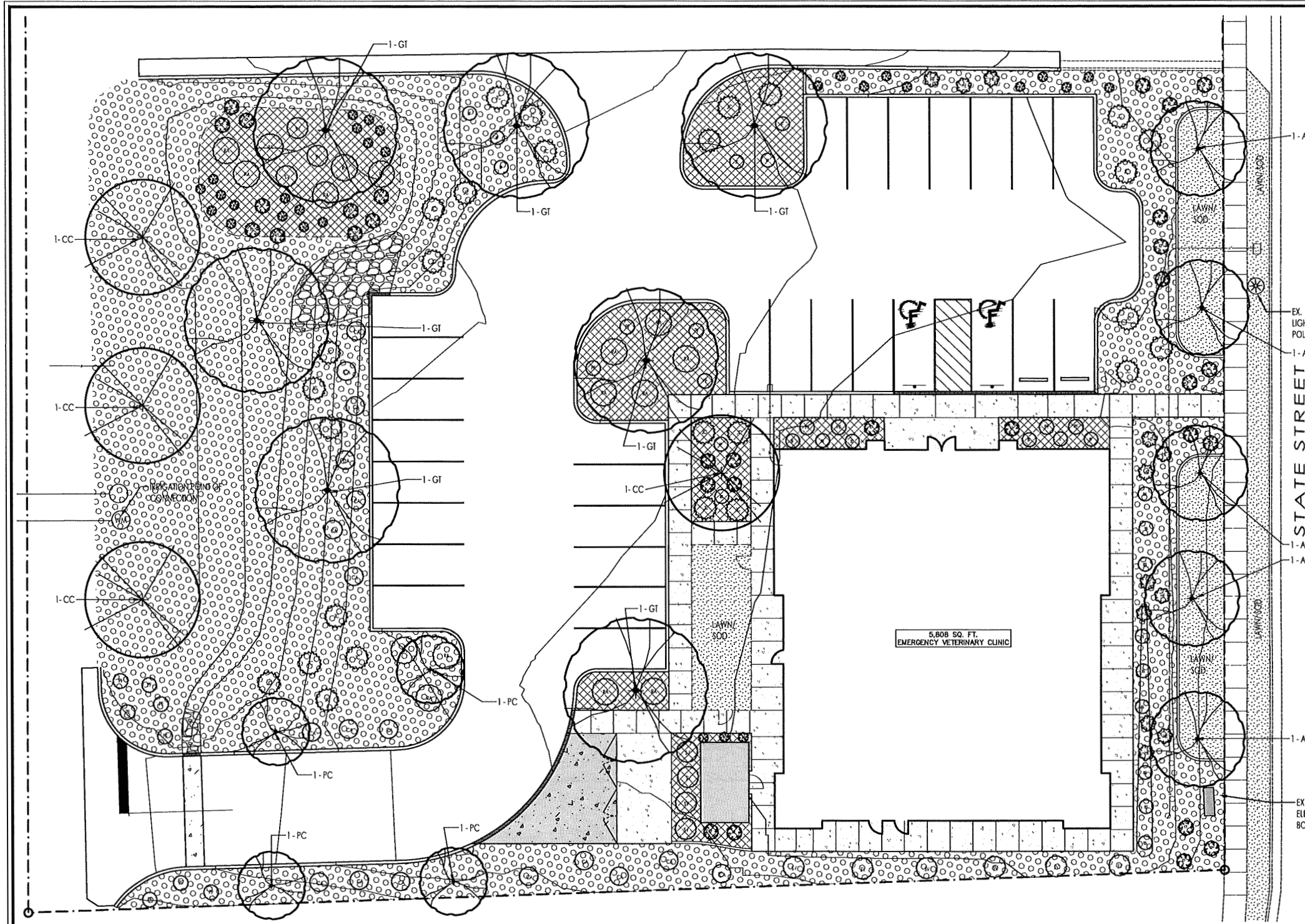
VETERINARY EMERGENCY GROUP
 VETERINARY EMERGENCY GROUP, LLC
 7 LEGION DRIVE
 VAHALLA, NY 10555

MARK	DATE	COMMENTS
05/02/2023	REVISED PER SVSD COMMENT	
04/19/2023	SITE DEVELOPMENT PLAN SUBMISSION	
02/14/2023	ADDENDUM #1	
01/13/2023	BID SET	
01/05/2023	ISSUED FOR PERMIT	

VETERINARY EMERGENCY GROUP - SANDY
 11084 S. STATE STREET, SANDY, UT 84070
PROPOSED SITE IMPROVEMENTS

Date: 01/05/23
 Project No.: 12956-002
 Sheet No.:

C2.01



GENERAL NOTES

1. PLANT NAMES MAY BE ABBREVIATED ON THE DRAWINGS. SEE PLANT LEGEND FOR ABBREVIATIONS, BOTANICAL NAMES, SIZES, ESTIMATED QUANTITIES (IF GIVEN) AND OTHER REMARKS.
2. IT IS THE CONTRACTOR'S RESPONSIBILITY TO FURNISH ALL PLANT MATERIALS FREE OF PESTS OR PLANT DISEASES. PRE-SELECTED OR "TAGGED" MATERIAL MUST BE INSPECTED BY THE CONTRACTOR AND CERTIFIED PEST AND DISEASE FREE. IT IS THE CONTRACTOR'S OBLIGATION TO MAINTAIN AND WARRANTY ALL PLANT MATERIALS PER THE SPECIFICATIONS. ALL PLANTS SHALL BE SUBJECT TO OWNER'S APPROVAL PRIOR TO INSTALLATION.
3. PROVIDE MATCHING SIZES AND FORMS FOR EACH SPECIES OF TREES AND PLANTS INSTALLED GRID OR SPACED EQUALLY IN ROWS AS SHOWN ON DRAWINGS. ADJUST SPACING (EQUAL TO EQUAL) AS NECESSARY, SUBJECT TO ACCEPTANCE BY THE OWNER'S REPRESENTATIVE.
4. THE LANDSCAPE CONTRACTOR SHALL TAKE ALL NECESSARY SCHEDULING AND OTHER PRECAUTIONS TO AVOID WINTER, CLIMATIC, WILDLIFE, OR OTHER DAMAGE TO PLANTS. THE CONTRACTOR SHALL INSTALL THE APPROPRIATE PLANTS AT APPROPRIATE TIME TO GUARANTEE LIFE OF PLANTS FOR 12 MONTHS AFTER INSTALLATION.
5. PLACE 3" THICK ROCK MULCH IN ALL SHRUB AREAS.
6. NEW LAWN AREAS TO BE SOODED USING TURF-TYPE TALL FESCUE.
7. CONTRACTOR SHALL GUARANTEE ALL LANDSCAPE WORK FOR 1 YEAR FROM SUBSTANTIAL COMPLETION.
8. ALL NEW LAWN AREAS SHALL RECEIVE A 4 INCH DEPTH OF TOPSOIL. ALL SHRUB PLANTING AREAS SHALL RECEIVE A 6 INCH DEPTH OF TOPSOIL. TOPSOIL MATERIAL IS NOT AVAILABLE AT THE SITE AND MUST BE IMPORTED FROM A LOCAL SOURCE. ALL TOPSOIL SHALL BE OF A RICH SANDY LOAM MIX.
9. ALL PLANT MATERIAL HOLES SHALL BE DUG TWICE THE DIAMETER OF THE ROOTBALL AND 6 INCHES DEEPER. EXCAVATED MATERIAL SHALL BE REMOVED FROM THE SITE.
10. PLANT BACKFILL MIXTURE SHALL BE COMPOSED OF 3 PARTS TOPSOIL TO 1 PART HUMUS ADDITIVE, AND SHALL BE ROTARY MIXED ON-SITE PRIOR TO INSTALLATION.

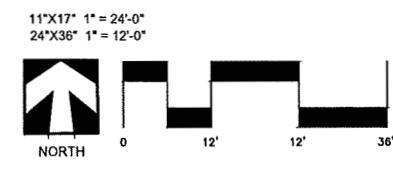
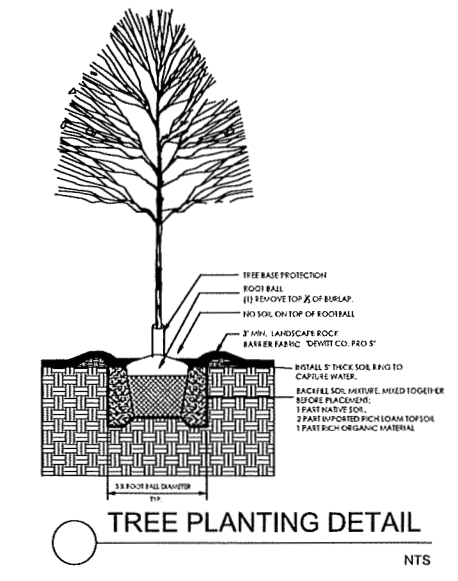
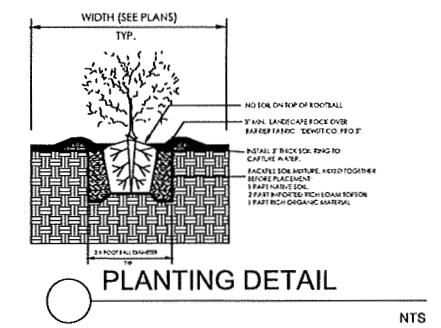
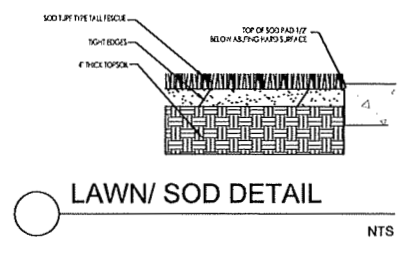
Planting Schedule

Key	Qty	Botanical Name	Common Name	Size	H	W
BG	30	<i>Bouteloua gracilis</i> 'Blonde Ambition'	Blue Grama Grass	5 gal.	2'	2'
KF	33	<i>Calamagrostis acutiflora</i> 'Karl Foerster'	Feather reed Grass	5 gal.	4'	3'
HE	12	<i>Hemerocallis</i> 'Happy Returns'	Yellow Daylily Early Summer	5 gal.	2'	3'
BS	9	<i>Buxus sempervirens</i> 'Suffruticosa'	True Dwarf Boxwood	5 gal.	2'	3'
SV	13	<i>Syringa vulgaris</i> 'Wonder Blue'	Wonder Blue dwarf Lilac	5 gal.	5'	5'
BT	14	<i>Berberis thunbergii</i> 'Orange Torch'	Upright Orange Barberry	5 gal.	3'	3'
CA	18	<i>Cornus alba</i> 'Jefreb' Little Rebel	Little Rebel Dogwood	5 gal.	4'	4'
PF	16	<i>Potentilla fruticosa</i> 'Goldstar'	Goldstar potentilla	5 gal.	3'	3'
JC	23	<i>Juniperus communis</i> 'Green Carpet'	Creeping Juniper	5 gal.	12"	5'
RA	16	<i>Rhus aromatica</i> 'Gro-Low'	Fragrant Sumac	5 gal.	2'	6'
CC	4	<i>Cercis canadensis</i>	Eastern Redbud	2" cal.	25'	25'
AC	5	<i>Acer campestre</i> 'Metro Gold'	Hedge Maple	2" cal.	35'	20'
PC	4	<i>Pyrus calleryana</i> 'Chanticleer'	Flowering Pear	2" cal.	35'	15'
GT	7	<i>Gleditsia triacanthos</i> 'imperia'	Imperial Honeylocust	2" cal.	30'	30'

Contractor to verify all plant quantities. Plans govern over legend

MATERIALS LEGEND

- PROPOSED CONCRETE
SEE CIVIL PLANS FOR INFORMATION
- PROPOSED RIP RAP
SEE CIVIL PLANS FOR INFORMATION
353 S.F.
- LAWN/ SOD
SEE DETAIL (THIS SHEET)
2,452 S.F.
- 1" LANDSCAPE ROCK
SEE DETAIL (THIS SHEET)
13,636 S.F.
- 1/2" LANDSCAPE ROCK
SEE DETAIL (THIS SHEET)
3,968 S.F.



LANDCURVE
LANDSCAPE ARCHITECTURE

2022-050

REID B. MITCHELL
No. 40014-2001
LANDSCAPE ARCHITECT

STAMP

VEG - SANDY, UT
Landscape Plans
11084 South State Street
Sandy, Utah 84070

REVISIONS

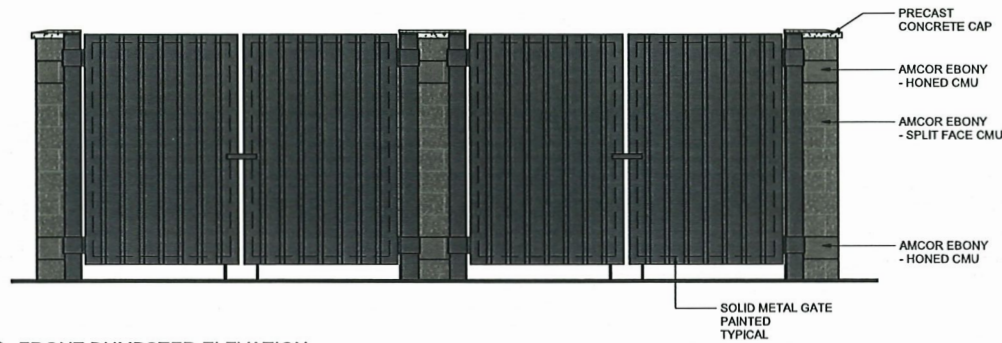
Landscape Planting Plan

SHEET NAME

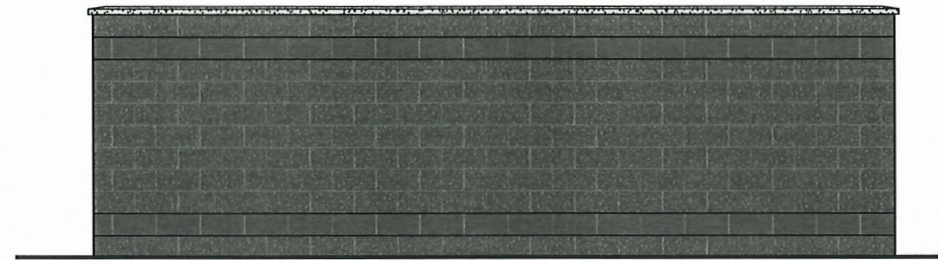
LA.02

SHEET NO.

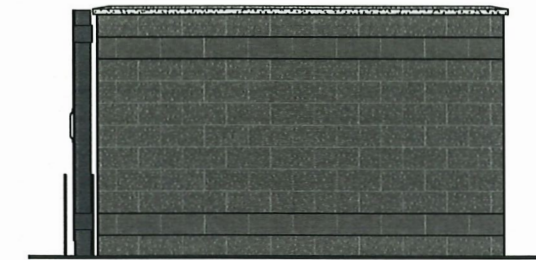
DATE 6/5/2023



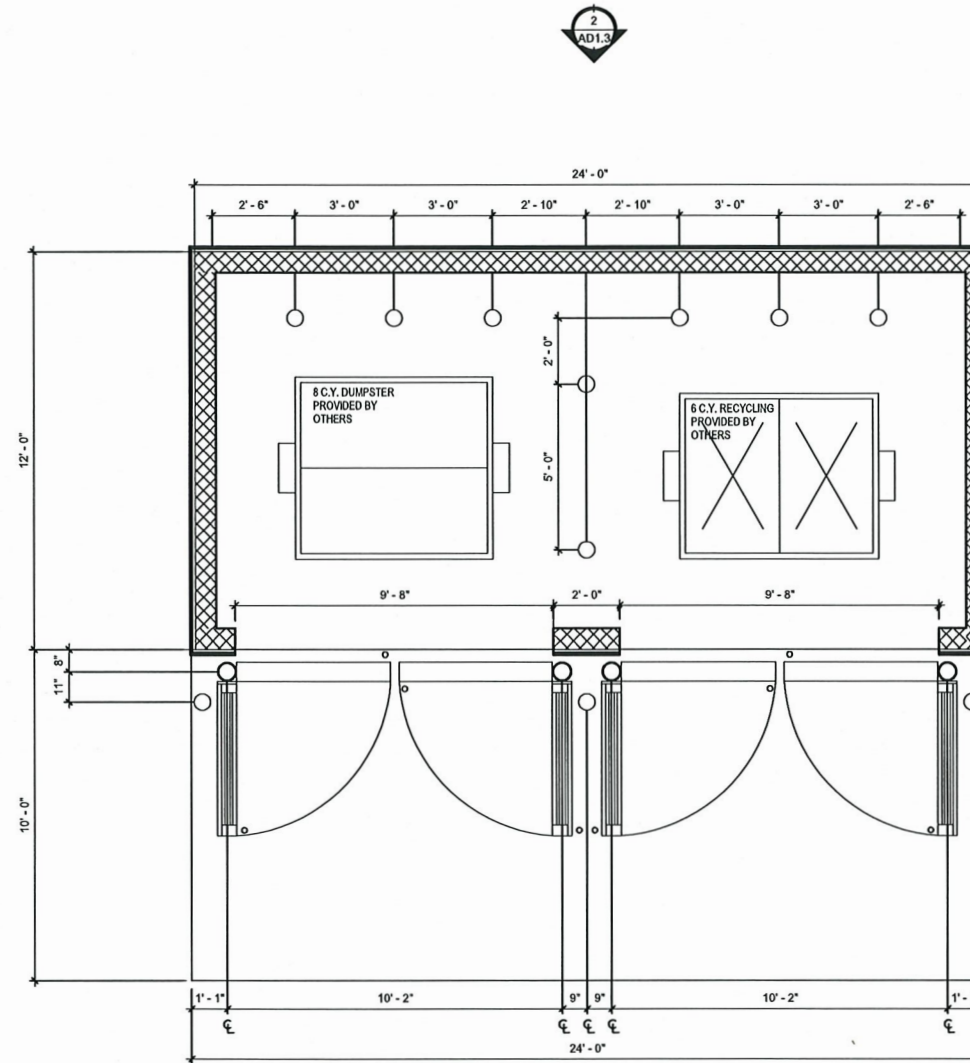
1 FRONT DUMPSTER ELEVATION
AD1.3 SCALE: 3/8" = 1'-0"



2 REAR DUMPSTER ELEVATION
AD1.3 SCALE: 3/8" = 1'-0"



3 SIDE DUMPSTER ELEVATION
AD1.3 SCALE: 3/8" = 1'-0"



4 TRASH ENCLOSURE PLAN
AD1.3 SCALE: 3/8" = 1'-0"

FINISH LEGEND



AMCOR SPLIT FACE CMU
COLOR: EBONY



AMCOR HONED CMU
COLOR: EBONY



TRASH ENCLOSURE PLAN & ELEVATIONS

SANDY, UT

AD1.3

DATE: 06/05/23

- UTILITIES**
- ELECTRICAL
 - SANITARY
 - WATER
 - TELECOMMUNICATIONS
 - FIRE MAIN
 - GAS



1 FIRST FLOOR PLAN
 AD1.0 SCALE: 3/16" = 1'-0"

FLOOR PLAN

SANDY, UT

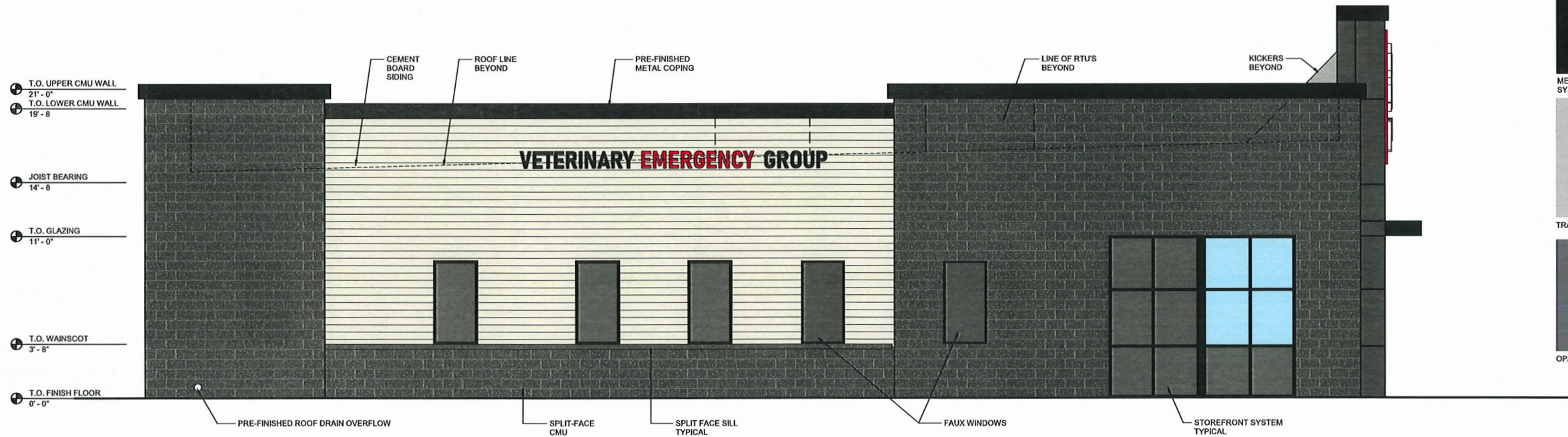


AD1.0

DATE: 06/05/23



1 NORTH ELEVATION
SCALE: 1/4" = 1'-0"



2 EAST ELEVATION
SCALE: 1/4" = 1'-0"

FINISH LEGEND

-  YORK BUILDING PRODUCTS
SPLIT FACE CMU
COLOR: CHARCOAL
-  EIFS / SIDING
COLOR: SW7009 PEARLY WHITE
-  YORK BUILDING PRODUCTS
SPLIT FACE SILL
COLOR: CHARCOAL
-  ALUCOBOND: SERPENTINE METALLIC
-  METAL CANOPY / STOREFRONT
SYSTEM MULLIONS
-  TRANSLUCENT WINDOW FILM
-  OPAQUE WINDOW FILM

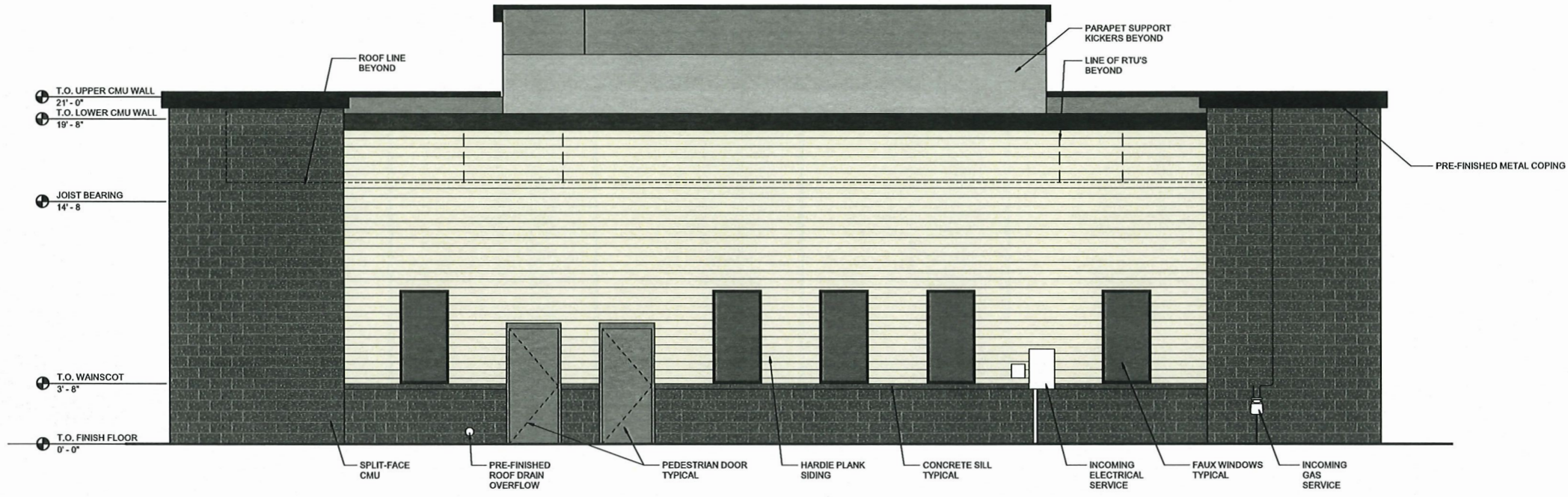


EXTERIOR ELEVATIONS

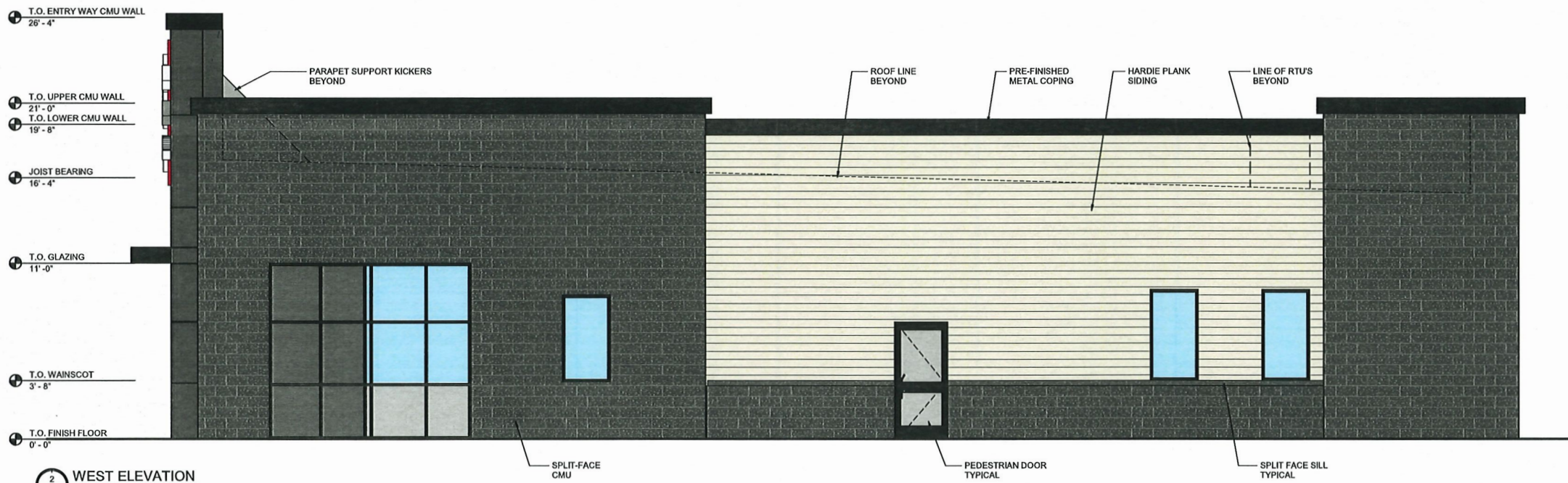
SANDY, UT

AD1.1

DATE: 06/05/23



1 SOUTH ELEVATION
SCALE: 1/4" = 1'-0"



2 WEST ELEVATION
SCALE: 1/4" = 1'-0"

FINISH LEGEND

-  YORK BUILDING PRODUCTS
SPLIT FACE CMU
COLOR: CHARCOAL
-  EIFS / SIDING
COLOR: SW7009 PEARLY WHITE
-  YORK BUILDING PRODUCTS
SPLIT FACE SILL
COLOR: CHARCOAL
-  ALUCOBOND: SERPENTINE METALLIC
-  METAL CANOPY / STOREFRONT
SYSTEM MULLIONS
-  TRANSLUCENT WINDOW FILM
-  OPAQUE WINDOW FILM



EXTERIOR ELEVATIONS

SANDY, UT

AD1.2

DATE: 06/05/23