



# Public Works Phase 2



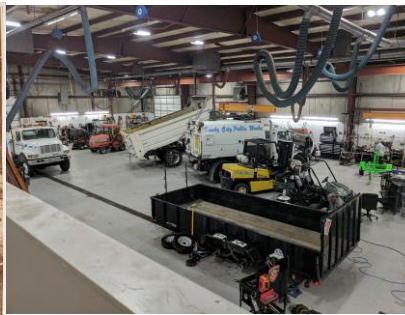
# Phase 1 (today)



# Current Maintenance Facility

## Building:

- Remains of a 20,000 SF steel building built in 1977 as a storage building.
- In 1980s converted 2,000 SF to office, 9,000 SF maintenance facility, and 9,000 SF truck storage.
- Office and truck storage lost in 2017 fire.



## Issues:

- ½ space needed (built when city was less than 50,000)
- Rust/decay and varmints
- Overloaded electrical and air flow systems
- Small parts room
- Inefficient workspace (3 doors – no drive thru ability)

# Phase 2 (Build new Maintenance Facility)



## June 2023 Phase 2 bid

- Council allocation: \$7 million
- Cost estimate: \$7.4 million
- Low bid June 2023: \$9.8 million
- Shortfall: \$2.8 million
- Bid not accepted.
- Decided to remove several items, redesign and rebid.

# Changes to Design

- Changed construction from block to tilt-up concrete.
- Removed enclosed breezeway between buildings.
- Removed interior mezzanine.
- Eliminated construction of brine storage shed.
- Excavated hillside (approx. 3,000 yards) with in-house crew (no cost).
- Installed water and stormwater lines on southside as separate contract.

|                      |                   |                  |
|----------------------|-------------------|------------------|
| • Costs for changes: | Redesign:         | \$200,000        |
|                      | Utility work:     | \$278,000        |
|                      | <u>City fees:</u> | <u>\$ 99,000</u> |
|                      | Total:            | \$577,000        |

## March 2024 Phase 2 bid

- Remaining budget: \$6.4 million
- Cost estimate: \$7.4 million
- Low bid March 2024: \$8.1 million
- **Shortfall: \$1.7 million**

➤ Bid market remains tight, high priced, and challenging.



Need: \$1.7 million

