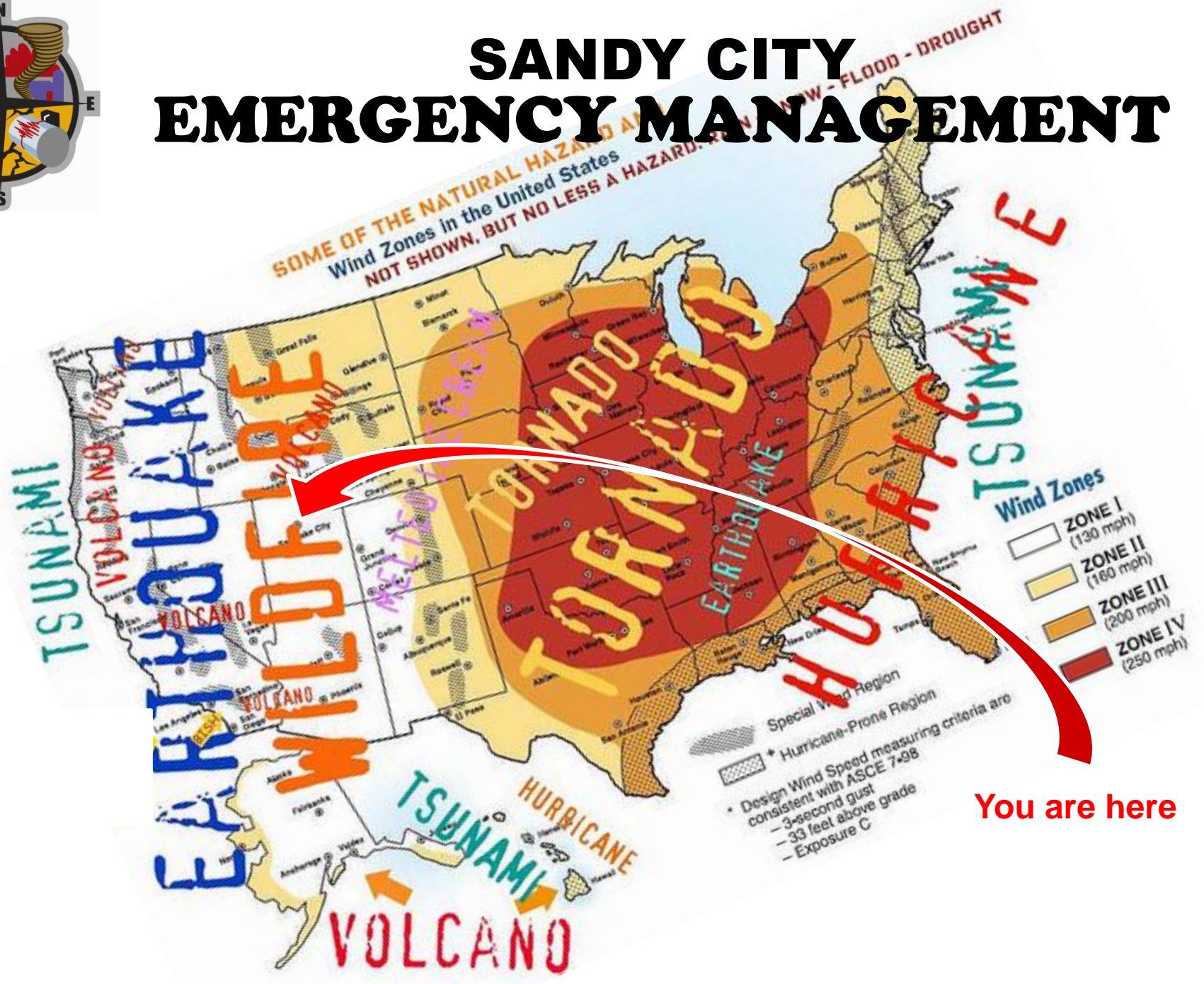




SANDY CITY EMERGENCY MANAGEMENT





SANDY CITY EMERGENCY MANAGEMENT

MISSION AREAS OF EMERGENCY MANAGEMENT

☙ PREVENTION

- ☙ Capabilities necessary to avoid, prevent, or stop a threatened or actual action of terrorism

☙ PROTECTION

- ☙ Capabilities necessary to secure the homeland against acts of terrorism and manmade or natural disasters

☙ MITIGATION

- ☙ Capabilities necessary to reduce loss of life and property by lessening the impact of disasters

☙ RESPONSE

- ☙ Capabilities necessary to save lives, protect property and the environment, and meet basic human needs following an incident

☙ RECOVERY

- ☙ Capabilities necessary to assist communities affected by an incident to recover effectively

SANDY CITY EMERGENCY MANAGEMENT



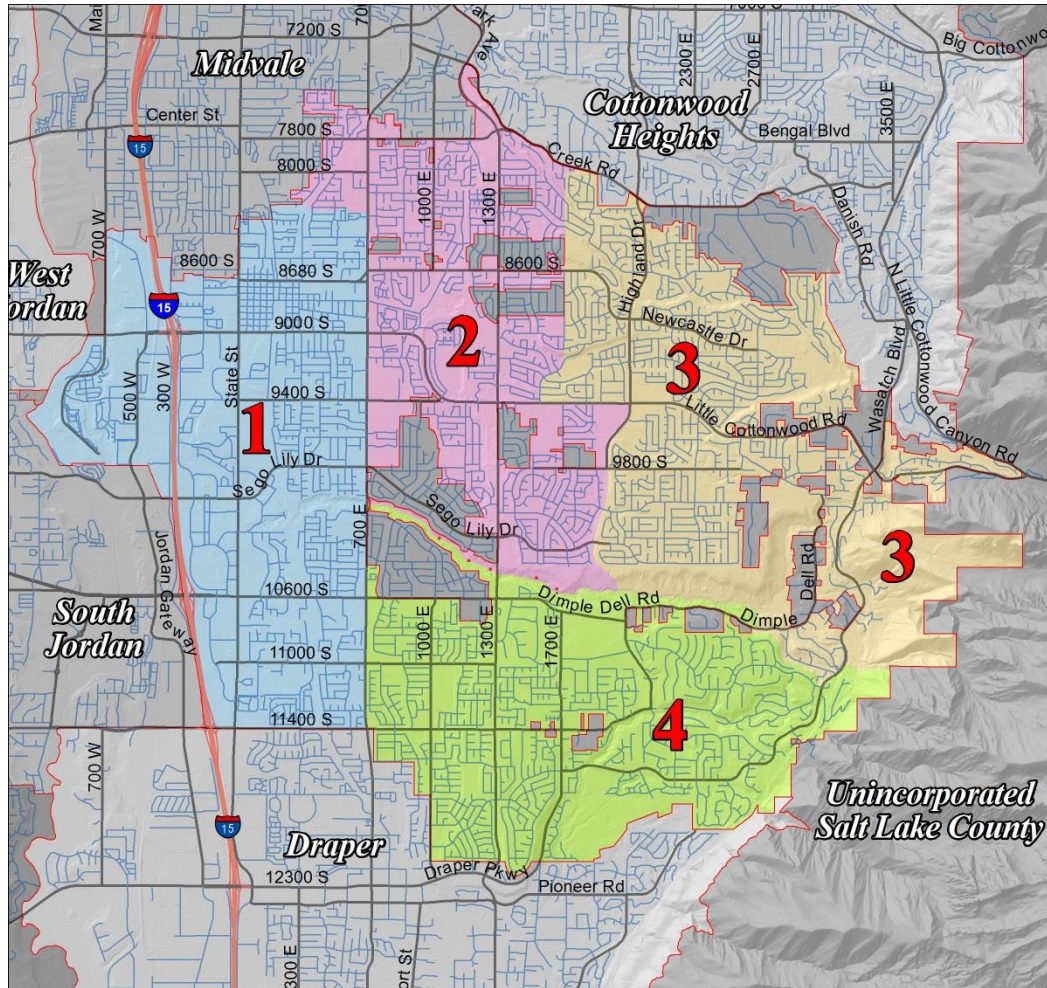
HAZARDS

Natural	Technological	Human-Caused
Results from acts of nature	Involves accidents or the failures of systems and structures	Cause by the intentional actions of an adversary
<ul style="list-style-type: none"> • Avalanche • Disease outbreak • Drought • Earthquake • Epidemic • Flood • Hurricane • Landslide • Tornado • Tsunami • Volcanic eruption • Wildfire • Winter storm 	<ul style="list-style-type: none"> • Airplane crash • Dam/levee failure • Hazardous materials release • Power failure • Radiological release • Train derailment • Urban conflagration 	<ul style="list-style-type: none"> • Civil disturbance • Cyber incidents • Sabotage • School violence • Terrorist acts



SANDY CITY EMERGENCY MANAGEMENT

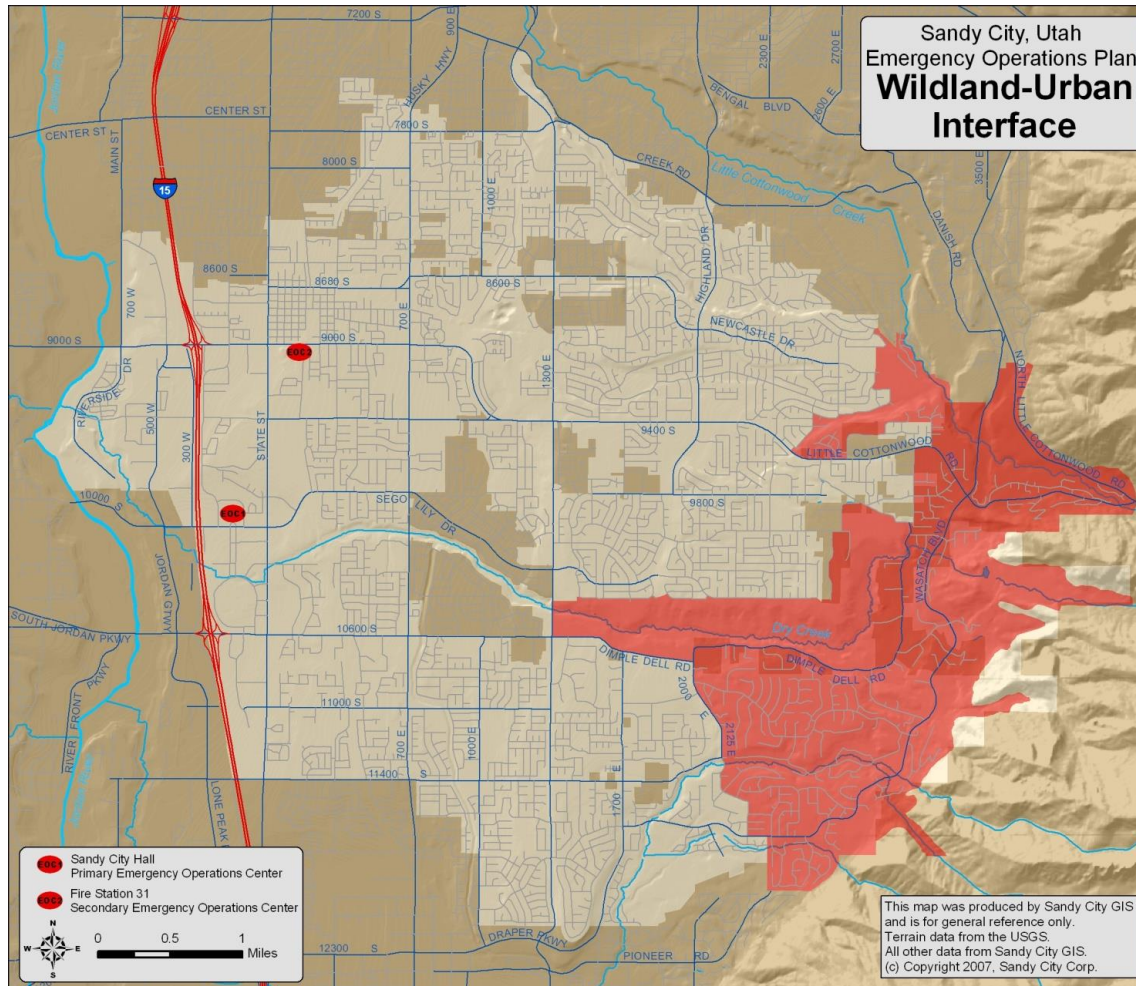
COUNCIL DISTRICTS





SANDY CITY EMERGENCY MANAGEMENT

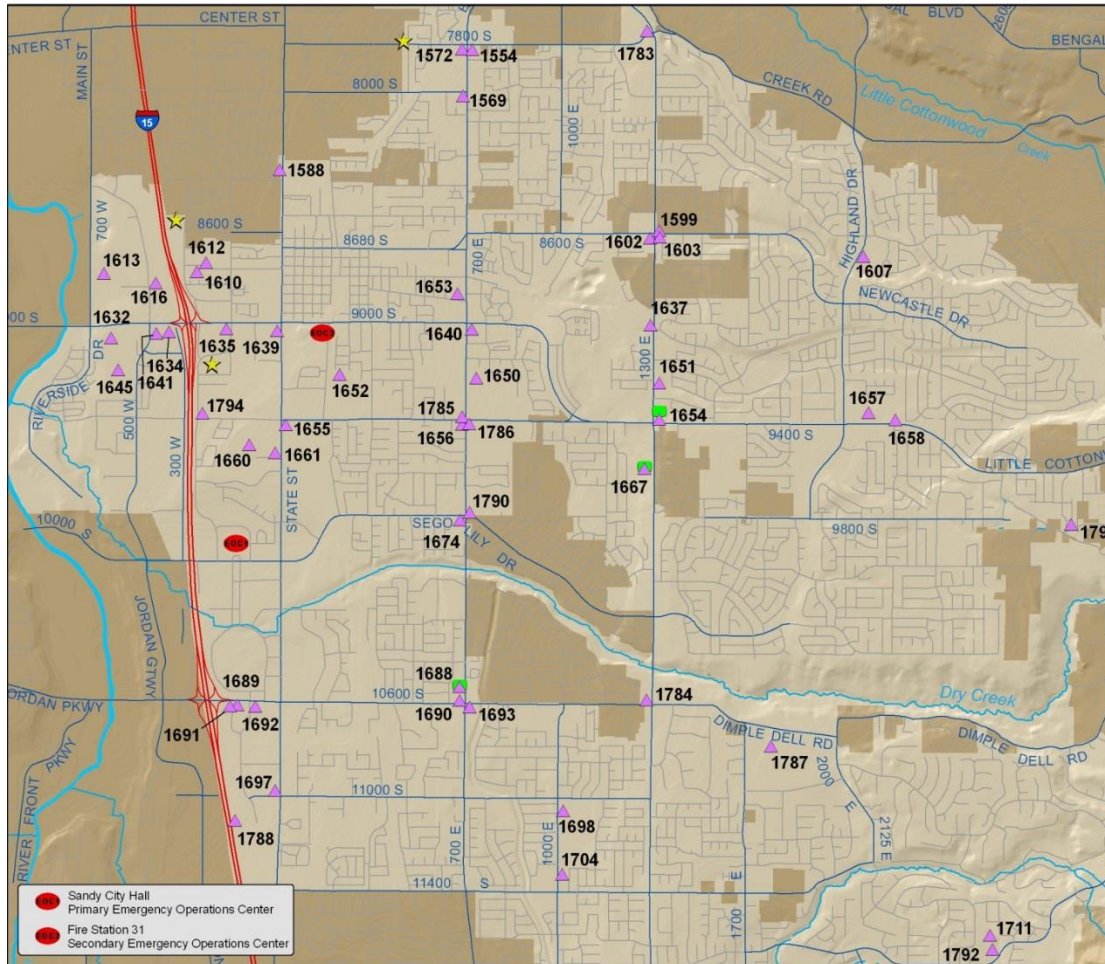
WILDLAND-URBAN INTERFACE





SANDY CITY EMERGENCY MANAGEMENT

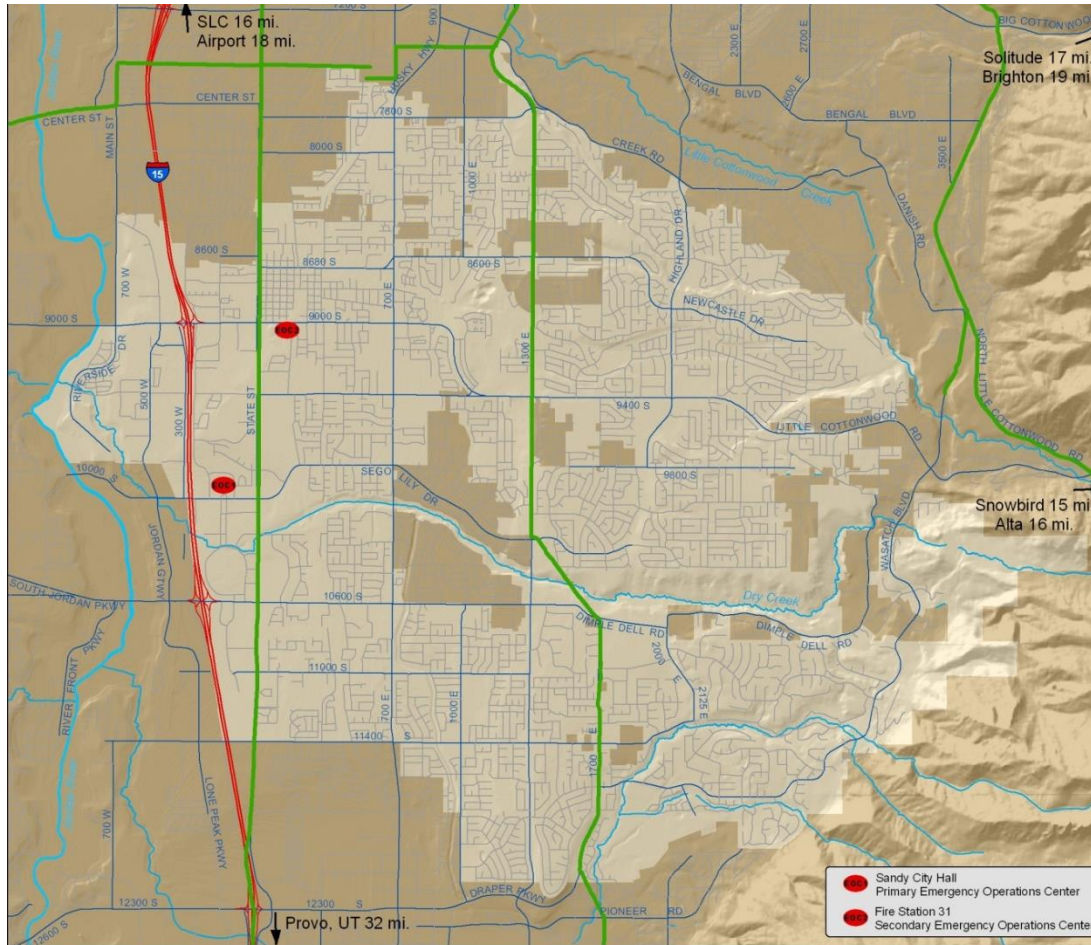
HAZMAT TANKS





SANDY CITY EMERGENCY MANAGEMENT

MAJOR GAS PIPELINES

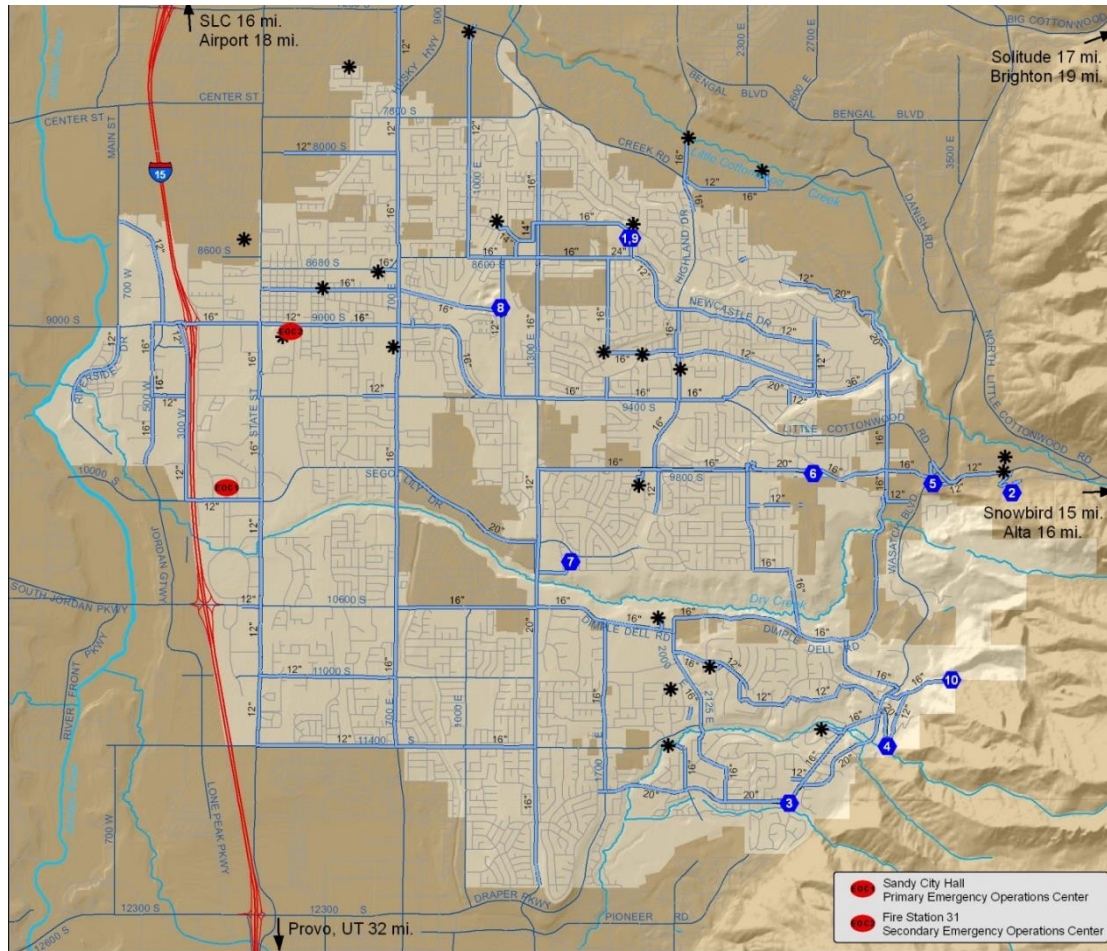


— Gas Pipelines



SANDY CITY EMERGENCY MANAGEMENT

WATER SYSTEM

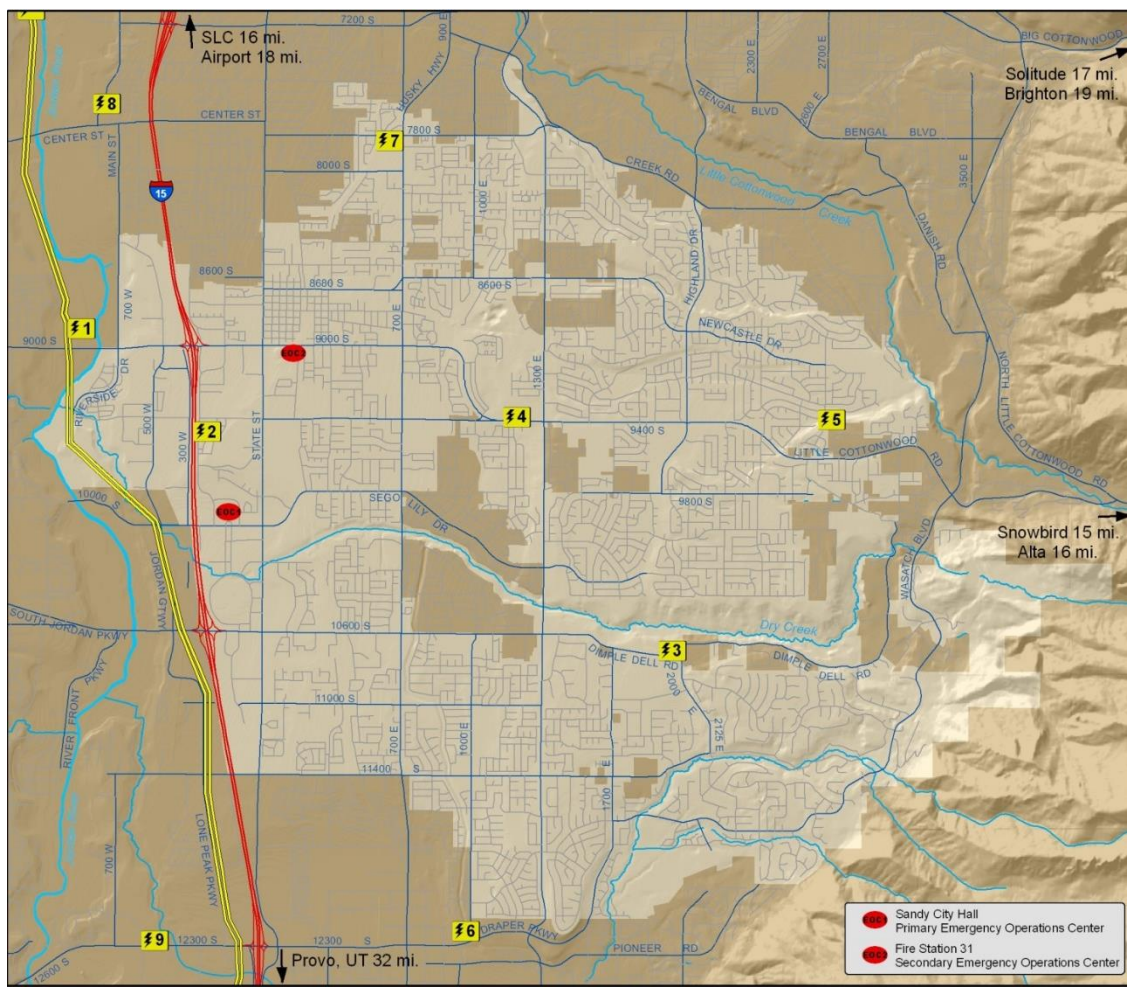


● Water Tank * Well — Water Main 12" and Larger



SANDY CITY EMERGENCY MANAGEMENT

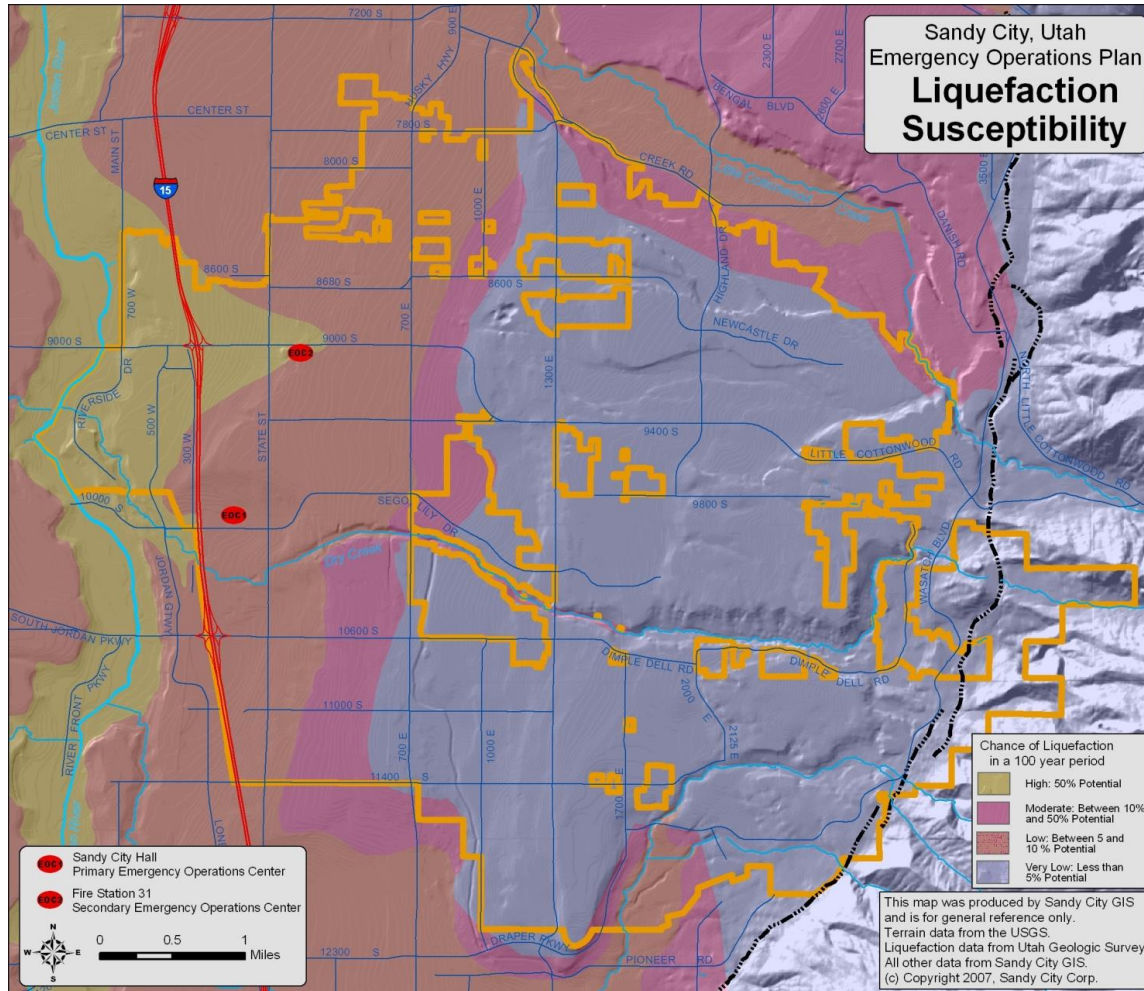
POWER SUBSTATIONS





SANDY CITY EMERGENCY MANAGEMENT

LIQUEFACTION SUSCEPTIBILITY





SANDY CITY EMERGENCY MANAGEMENT

OVERVIEW – FIRST RESPONDERS

POLICE	FIRE	INFRASTRUCTURE
<ul style="list-style-type: none">• 8 officers on patrol• 110 sworn officers• Detectives, Narcotics, CRT, Motors, Family Crimes, SWAT, Bomb Squad, Animal Control, and K-9• VOLUNTEERS: VIPS, Neighborhood Watch, Explorers	<ul style="list-style-type: none">• 5 fire stations• 3-5 firefighters• 69 combat fire personnel• 4 fire engines• 1 ladder engine• 2-4 ambulances daily• Community Emergency Response Team (CERT) Program• Fire Prevention• Business Inspections• First Aid/CPR/AED	<ul style="list-style-type: none">• 30+ schools• 1 hospital• 400 miles of road• 400 miles of water pipe• 10 water tanks• 94,000 residents• 22,000 homes• 5,400 businesses

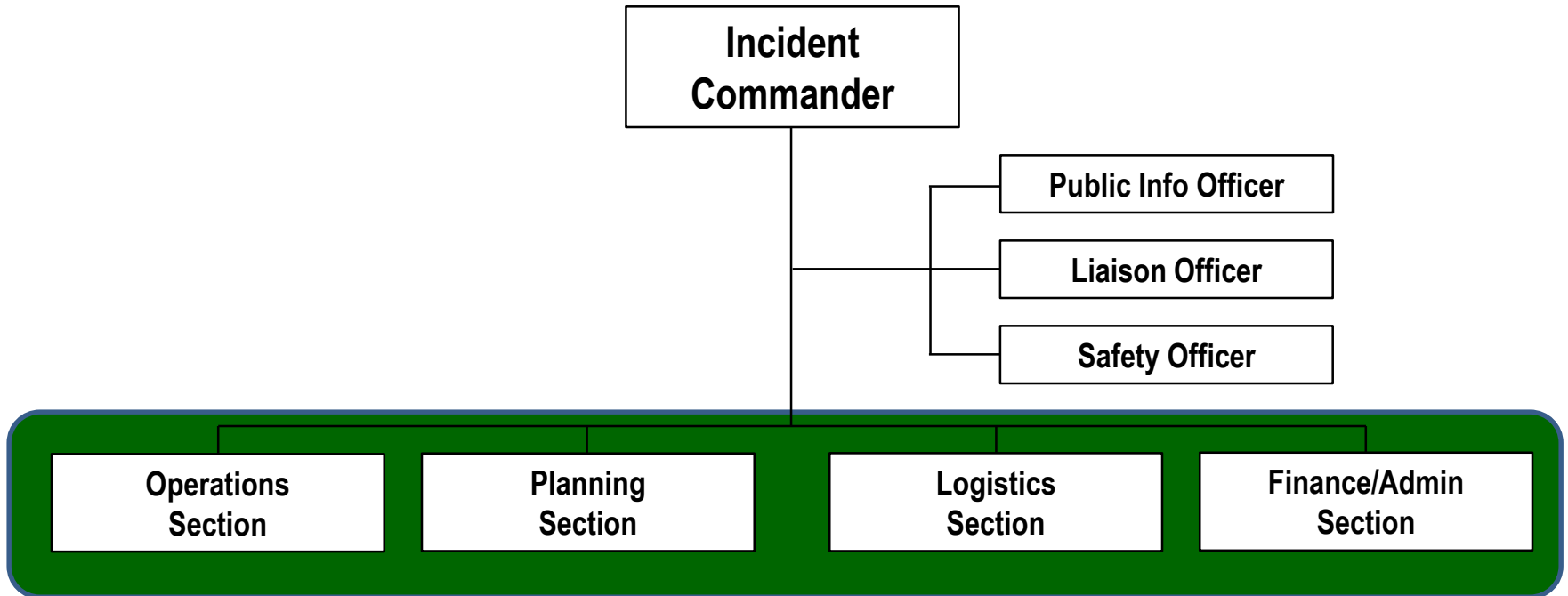


SANDY CITY EMERGENCY MANAGEMENT

INCIDENT COMMAND SYSTEM

GENERAL STAFF

- As the incident expands in complexity, the IC may add General Staff Sections to maintain span of control
 - Span of control – 3-7 sections/people, 5 optimal

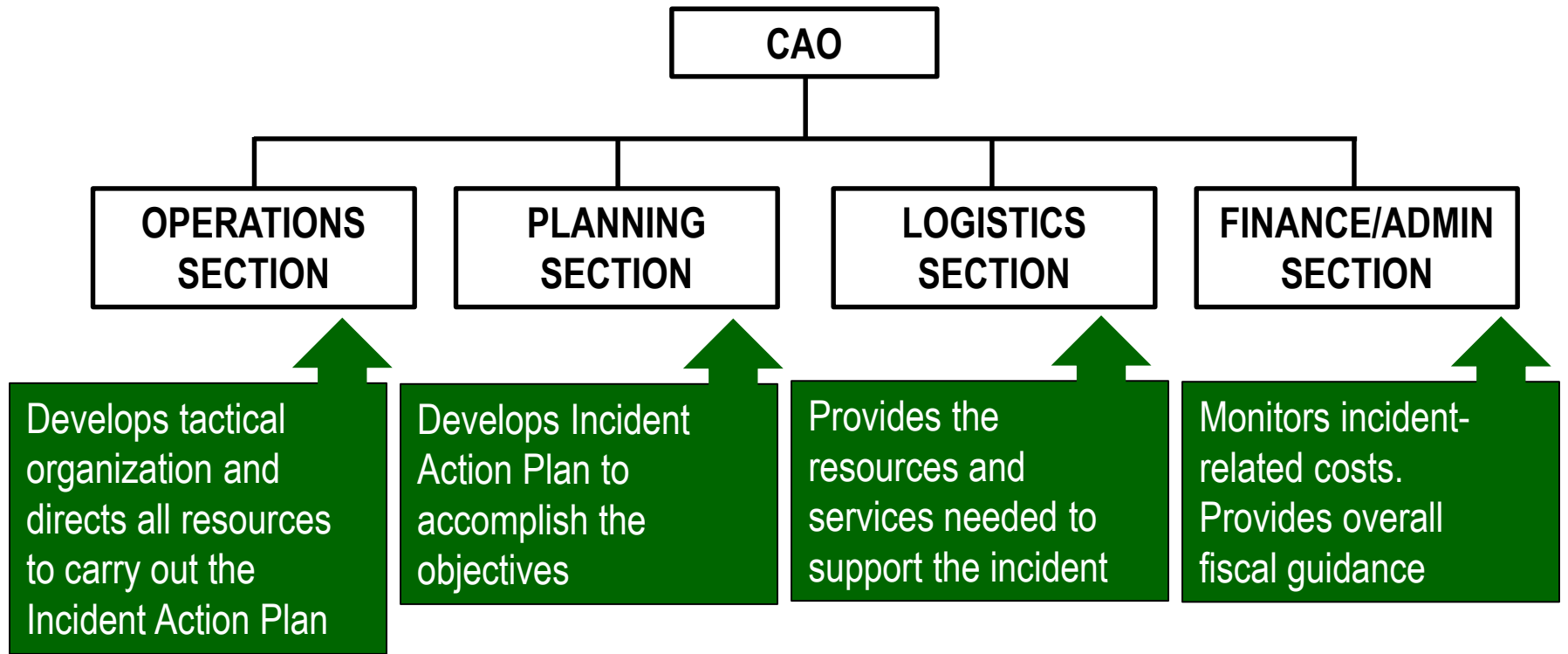




SANDY CITY EMERGENCY MANAGEMENT

INCIDENT COMMAND SYSTEM

SANDY CITY EMERGENCY OPERATIONS CENTER





SANDY CITY EMERGENCY MANAGEMENT

INCIDENT COMMAND SYSTEM

YELLOW TAPE

- ⚡ IC is responsible from the incident to the yellow tape
- ⚡ EOC is responsible from the yellow tape to “normal”

POLICE LINE DO NOT



SANDY CITY EMERGENCY MANAGEMENT

WHOLE COMMUNITY

CITY EMPLOYEES





SANDY CITY EMERGENCY MANAGEMENT

SANDY CITY EMPLOYEES

EMERGENCY MANAGEMENT TEAM

- ☞ Experienced leadership
- ☞ FEMA Training
- ☞ Exercise participation
- ☞ 800MHz radio communication drills
- ☞ Robust social media presence
- ☞ Ownership of equipment/resources

MUTUAL AID AGREEMENTS/MEMORANDUMS OF UNDERSTANDING

- ☞ Trans-Jordan Landfill
- ☞ Brigham City, Utah
- ☞ Garner Disaster Services, Texas
- ☞ American Red Cross
- ☞ LDS Church
- ☞ Many others...



SANDY CITY EMERGENCY MANAGEMENT

SANDY CITY EMPLOYEES

RESOURCES

- ☞ Emergency Operations Center
 - ☞ Position Checklists
- ☞ Emergency Operations Plan
- ☞ Protected Critical Infrastructure Information Program
- ☞ Established Partnerships
- ☞ Mobile Emergency Operations Center trailer
- ☞ Water trailer – 1,000 gallon capacity
- ☞ Radio Go Kits – Six amateur radio systems distributed to communities
- ☞ Generators
 - ☞ Gas
 - ☞ Solar
- ☞ Shelter w/ Heaters



SANDY CITY EMERGENCY MANAGEMENT

BUSINESS CONTINUITY

SANDY READY YOUR BUSINESS

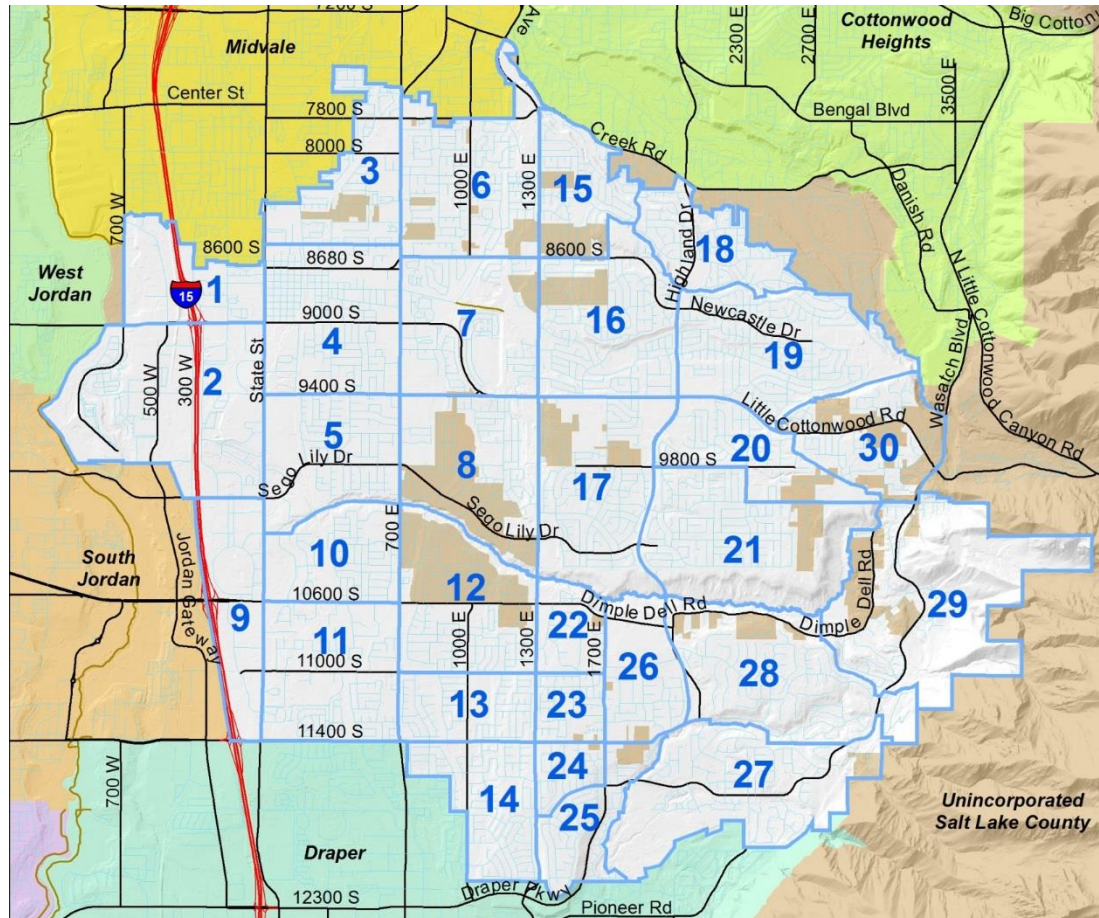
- ☞ Attend/present at corporate emergency management meetings/exercises including:
 - ☞ Rio Tinto Stadium
 - ☞ The Shops at South Towne Mall
 - ☞ InContact
 - ☞ IHC Alta View Hospital
 - ☞ Salt Lake Community College
- ☞ Develop relationships with lifeline services
 - ☞ Rocky Mountain Power
 - ☞ Dominion Energy (formerly Questar)
- ☞ Host quarterly business meetings to promote preparedness/networking



SANDY CITY EMERGENCY MANAGEMENT

SANDY CITY RESIDENTS

30 COMMUNITIES



The logo is a circular emblem divided into four quadrants by a cross. The top quadrant (North) shows a brown house and a stack of gold coins. The right quadrant (East) shows a red fire hydrant and a blue fire truck. The bottom quadrant (South) shows a white fire truck with a red siren. The left quadrant (West) shows a blue river with white waves and a green tree. The cardinal directions N, E, S, and W are labeled around the perimeter of the circle.

SANDY CITY EMERGENCY MANAGEMENT

SANDY CITY RESIDENTS

30 COMMUNITIES

- ☙ **Volunteers**

- ☙ **Community Coordinators**

- ☙ **Emergency Preparedness Leaders (EPLs)**

- ☙ Operate neighborhood command posts

- ☙ Develop relationships within their communities

- ☙ Work closely with Community Coordinators

- ☙ Eyes and ears of their community

- ☙ Provide Initial Damage Estimates (IDE) to Sandy City EOC

- ☙ **Emergency Communications Operators**

- ☙ Work closely with EPLs

- ☙ Support community command post using amateur radio equipment

- ☙ Support Sandy City EOC amateur radio communications



SANDY CITY EMERGENCY MANAGEMENT

SANDY CITY RESIDENTS

SANDY CITIZEN CORPS COUNCIL

🌀 2nd Thursday of each month, 7 pm, Sandy City Hall

🌀 CERT Program

🌀 Neighborhood Watch Program

🌀 Volunteers in Police Service (VIPS)

🌀 Medical Reserve Corps

🌀 Sandy Amateur Radio Club

🌀 Guest speakers

🌀 Police/Fire Chiefs

🌀 Residents – victims of Nepal earthquake

🌀 Professors from BYU & UVU

🌀 State representatives – Disaster Sanitation and Waste Disposal

🌀 American Red Cross

🌀 Many others...



SANDY CITY EMERGENCY MANAGEMENT

WHAT DOES ALL THIS MEAN TO YOU?

RESPONSIBILITIES IN A DISASTER

- ☞ Take care of yourself and your family first
- ☞ Report to City Hall (or other designated location) for a situation briefing
- ☞ Serve as a liaison and monitor the situation within your districts, and the city as a whole, and communicate through the City Council Director
- ☞ Survey problem sites and assist residents and the policy group to find solutions to problems that have resulted from the disaster
- ☞ Visit impacted areas, shelters, and other temporary facilities
- ☞ Assist the policy group in determining special legislation, policies, and resolutions, to help manage the emergency
- ☞ Participate in requisite training as required by state and federal law
- ☞ Convene to make policy decisions regarding emergency actions when needed
- ☞ Impose, by proclamation or resolution, orders deemed necessary to preserve the peace and order of the city



SANDY CITY EMERGENCY MANAGEMENT

DISASTER DECLARATION

WHO CAN DECLARE?

- ☛ Title 6 Administrative Code – Disaster Declaration
 - ☛ The Mayor may declare a local emergency by proclamation, provided that such local emergency shall not be continued or renewed for a period in excess of 30 days, except by or with the consent of the City Council
 - ☛ An emergency proclamation shall state:
 - ☛ Nature of the local emergency
 - ☛ Area or areas that are affected or threatened
 - ☛ The conditions which caused the emergency



SANDY CITY EMERGENCY MANAGEMENT

WHEN THE MEDIA COMES TO TOWN

WORKING WITH THE MEDIA

- ☞ Use city and departmental PIOs, they are a huge asset
 - ☞ They run the Joint Information Center and schedule media briefings
 - ☞ Make sure you get a copy of their news releases
 - ☞ They can give you tips, hints, do's and don'ts, when talking to the media
- ☞ Don't talk with the media unless you have been briefed within the last 15-20 minutes
 - ☞ Have a piece of paper in your hand with the latest information
 - ☞ Don't rely on your memory for facts



SANDY CITY EMERGENCY MANAGEMENT

COMMUNITY NEWS

WHAT YOUR RESIDENTS AND BUSINESSES NEED TO KNOW

- 👁️ What is being done for them?
- 👁️ Where can they get what they need?

BE AN EXAMPLE OF PREPAREDNESS

As a civic leader, you should encourage others to have plans and emergency supplies for both their home and workplace.

You should encourage them to get involved in their community and promote a neighborhood approach to emergency preparedness.

You have the opportunity to be a good example by developing a family disaster plan and creating an emergency supply kit for both your home and workplace.



SANDY CITY EMERGENCY MANAGEMENT

THE DON'TS

WHAT NOT TO DO

- 👁️ Don't make promises you can't keep
- 👁️ Don't forget to follow up on issues
- 👁️ Don't place blame
- 👁️ Don't guess at the cause of problems

SANDY CITY EMERGENCY MANAGEMENT



THE DO'S

THINGS YOU SHOULD DO

- 🌀 Keep city staff informed about concerns and issues of the community
- 🌀 Have a scribe
- 🌀 Support emergency management by funding staff positions and activities
- 🌀 Participate in planning, training, and exercises
- 🌀 Ask questions
- 🌀 Get prepared



SANDY CITY EMERGENCY MANAGEMENT

PROGRAM UPDATE

SANDY CITY EMPLOYEES

🌀 Exercises:

- 🌀 Call Taker Drill – 27 July
- 🌀 RUMBLING FAULT Functional Exercise – 24 August
- 🌀 CITY HAMMER Full-Scale Exercise – 28 September
- 🌀 WHITE OUT Tabletop Exercise - ?? December

🌀 Training opportunities:

- 🌀 Emergency Management Institute
 - 🌀 <https://training.fema.gov/emicourses/schedules.aspx>
- 🌀 State DEM
 - 🌀 <https://www.train.org/DesktopShell.aspx>



SANDY CITY EMERGENCY MANAGEMENT

PROGRAM UPDATE

SANDY CITY BUSINESS CONTINUITY

- ☙ Sandy Ready Your Business:
 - ☙ Preserving Records and Document – 17 August

SANDY CITY RESIDENTS

- ☙ Sandy City Citizens Corps Council:
 - ☙ Ways to preserve your harvest – 10 August