

WILLOW CREEK COUNTRY CLUB ANNEXATION  
RESOLUTION #18-50C

A RESOLUTION INDICATING INTENT TO ANNEX  
AN UNINCORPORATED AREA, SETTING A HEARING  
TO CONSIDER SUCH AN ANNEXATION, AND  
DIRECTING PUBLICATION OF HEARING NOTICE.

The City Council of Sandy City, State of Utah, finds and determines as follows:

1. Sandy City ("City") desires to annex a certain contiguous unincorporated area, totaling approximately 175 acres, located at approximately 8214 South to 8506 South Willow Creek Drive, 2550 East to 2570 East Robidoux Road, and 8300 South Etienne Way in Salt Lake County, Utah, as shown in Appendix "A".
2. The City is authorized to annex the area without a petition pursuant to Utah Code Annotated §10-2-418.
3. The annexation of that portion of an island or peninsula, leaving unincorporated the remainder of that island or peninsula, is in the City's best interests.

NOW, THEREFORE, BET IT RESOLVED by the City Council of Sandy City, Utah that it does hereby:

1. Indicate the City Council's intent to annex the area shown in Appendix "A".
2. Determine that not annexing the entire unincorporated island or unincorporated peninsula is in the City's best interest.
3. Set a public hearing for November 6, 2018, at 7:00 p.m. to consider the annexation.
4. Direct the City Recorder to publish and send notice of such hearing in accordance with Utah Code Annotated §10-2-418.

ADOPTED by the Sandy City Council this \_\_\_\_ day of \_\_\_\_\_, 2018.

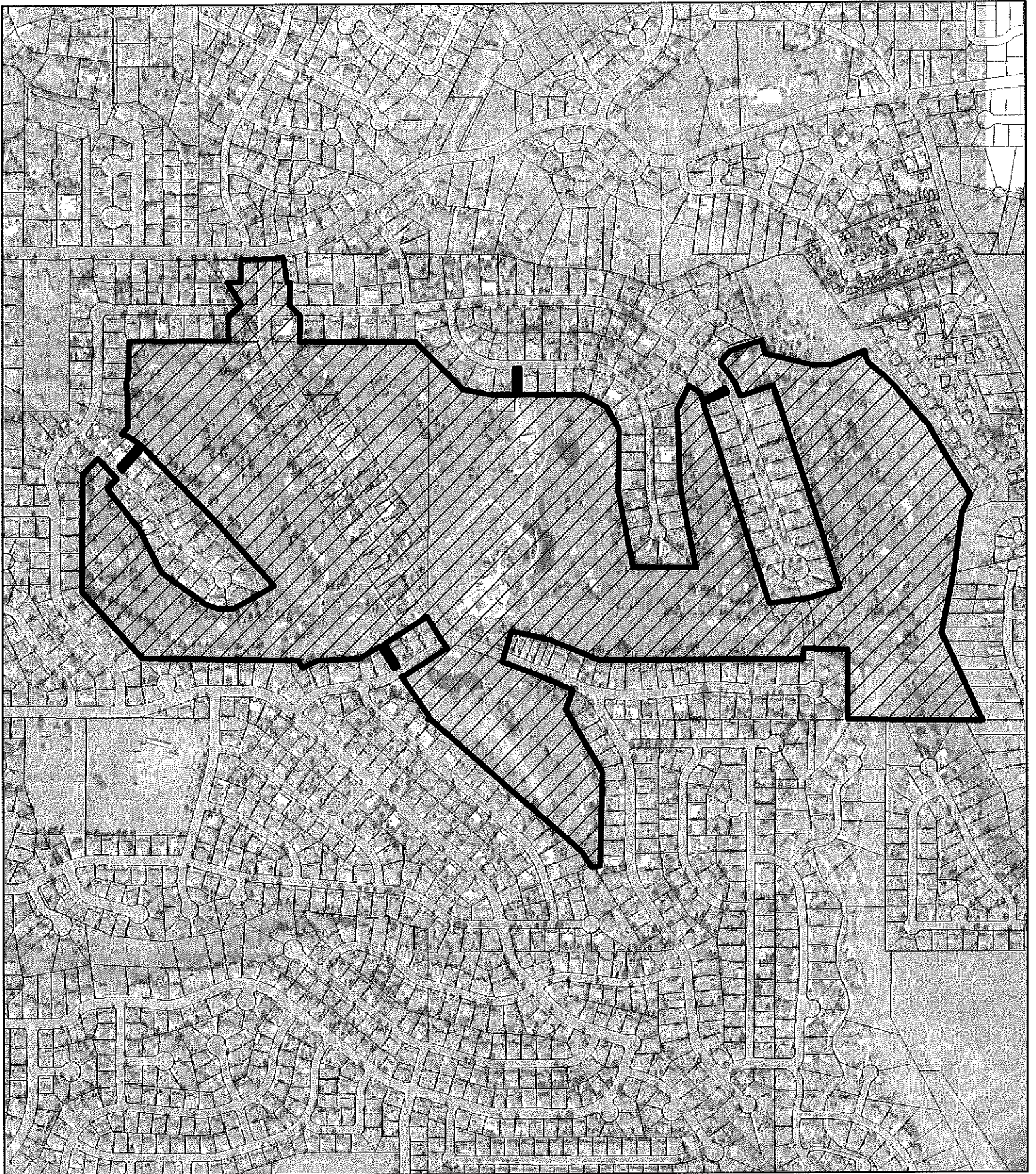
\_\_\_\_\_  
Steve Fairbanks, Chair  
Sandy City Council

ATTEST:

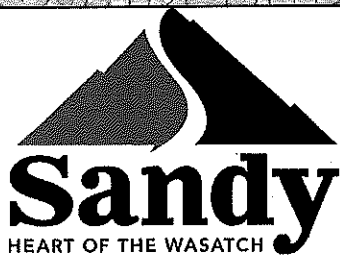
\_\_\_\_\_  
City Recorder

RECORDED this \_\_\_\_ day of \_\_\_\_\_, 2018.

# APPENDIX A



**Willow Creek Country Club Annexation  
ANEX-09-18-5494**



*PRODUCED BY THE COMMUNITY DEVELOPMENT DEPARTMENT  
WADE SANNER, PLANNER*