



Sandy City Council
March 5, 2019

Recycling Update



Sandy City Recycling Numbers

4,027

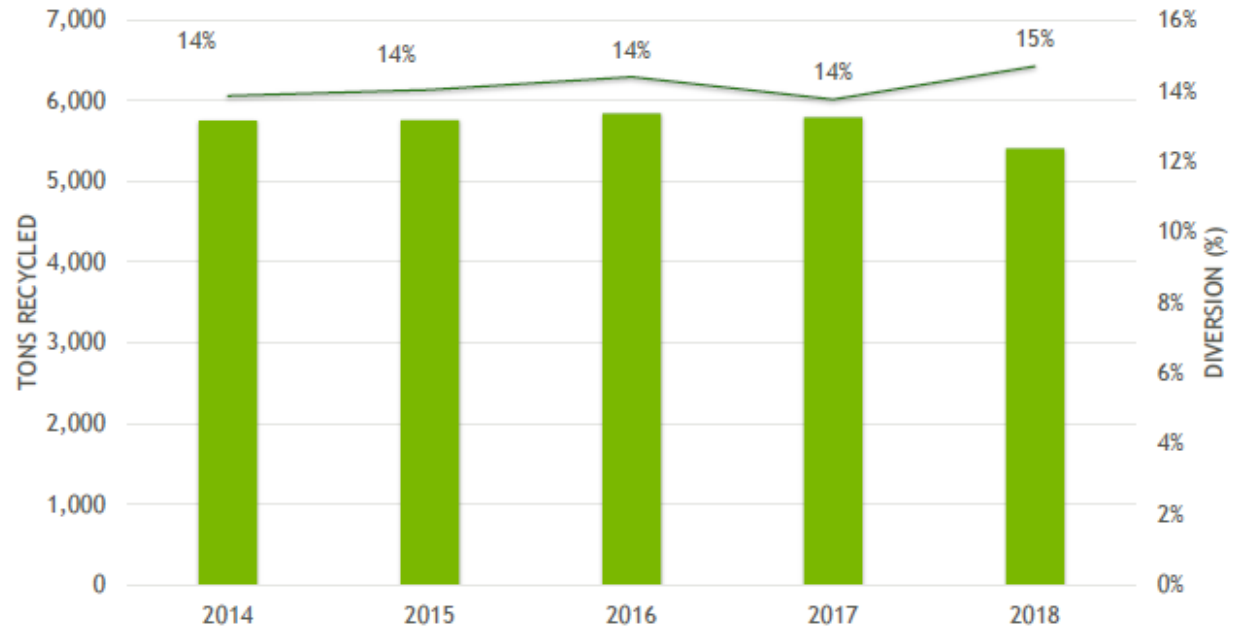
TONS RECYCLED IN 2018

.....

TOTAL DIVERSION (%)
GOES UP, WHILE
TONNAGE GOES DOWN



RESIDENTIAL MATERIAL DIVERTED FROM LANDFILL ANNUALLY



Sandy City Recycling Numbers

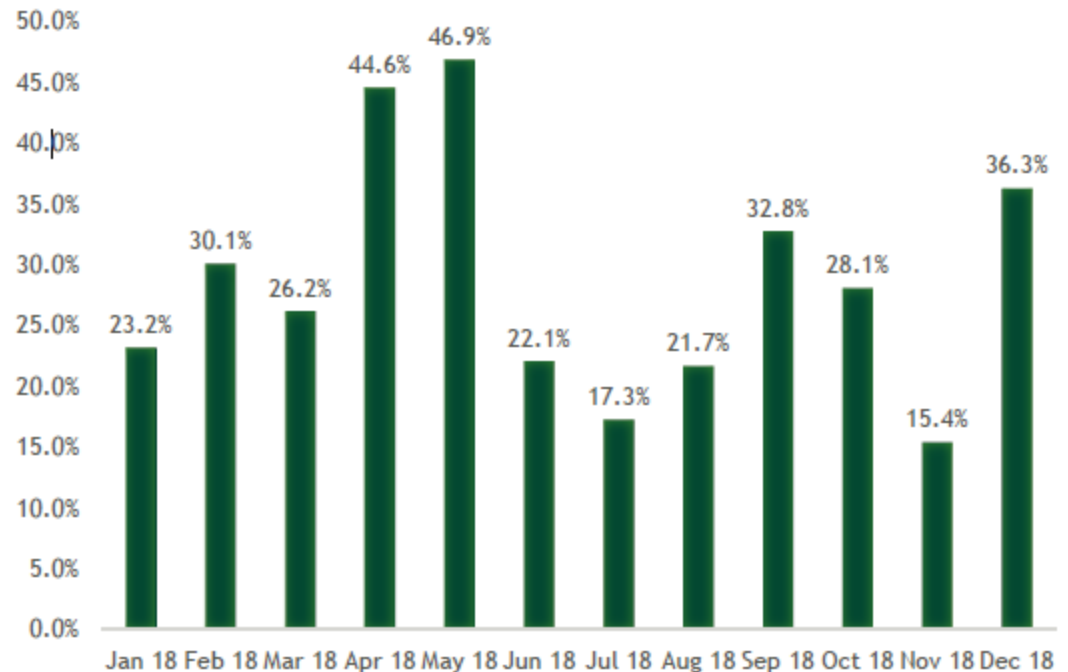
27.1%

**AVERAGE
CONTAMINATION**

.....

An estimated 1,378 tons of trash were sent to be recycled in 2018. Sandy City can do better.

2018 AUDIT CONTAMINATION LEVEL



Sandy City Recycling Numbers

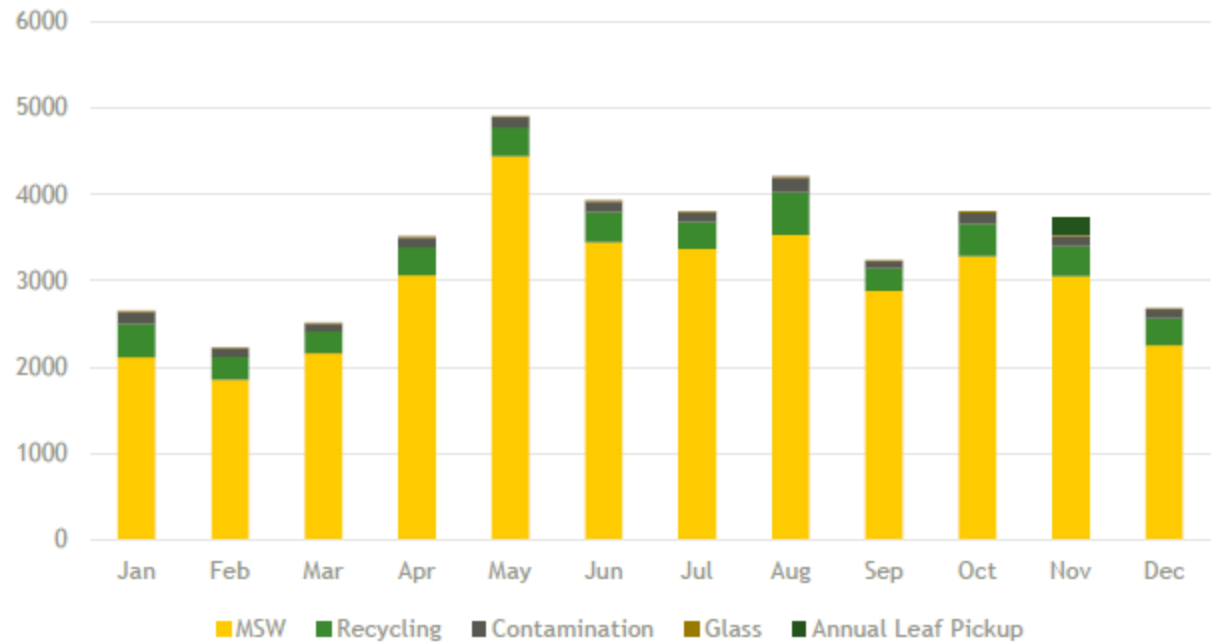
11%

AVERAGE DIVERSION

VOLUME INCREASES
IN WARMER MONTHS

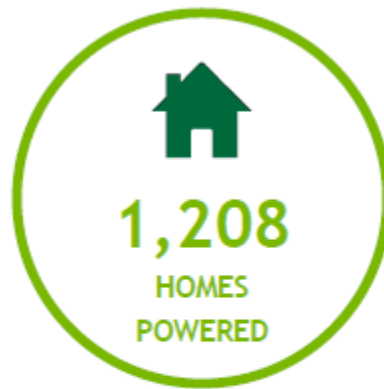


TONS OF RESIDENTIAL MATERIAL COLLECTED IN 2018



TANGIBLE BENEFITS

Recycling 4,027 tons in 2018 in
Sandy City made an impact.



with electricity saved by
recycling



with water saved by
recycling

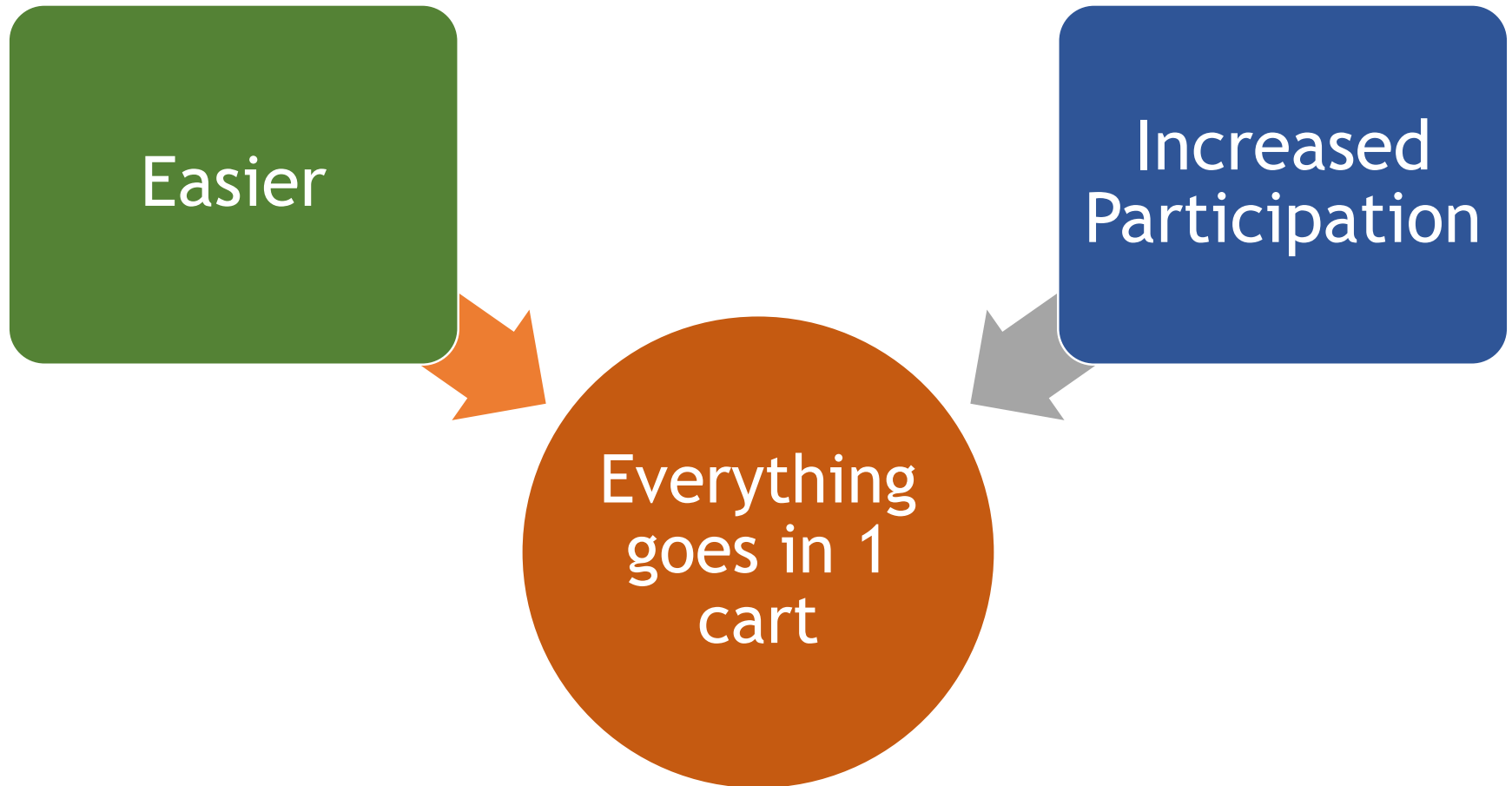


saved by recycling

THINK GREEN



Why use “Single Stream Recycling?”



Acceptable Materials

- Cardboard & Paperboard (e.g. cereal boxes)
- Paper (printed, writing paper, mail)
- Plastic Bottles & Containers (Clean, Empty & Dry)
- All Metal Bottles & Cans (Steel & Aluminum)



Common Contaminants ... No No No's

NO Bagged Recyclables



NO Plastic Bags



NO Plastic Wraps & Film



NO Garden Hoses, Rope, Leashes, Wire & String



NO Dirty Diapers



NO Flexible Packaging



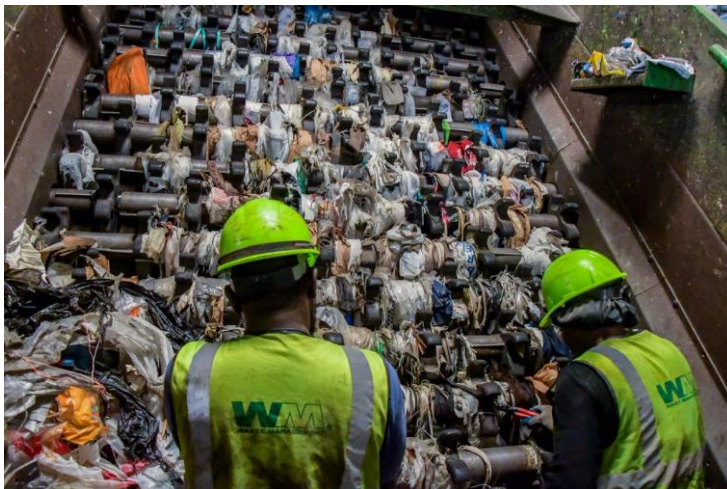
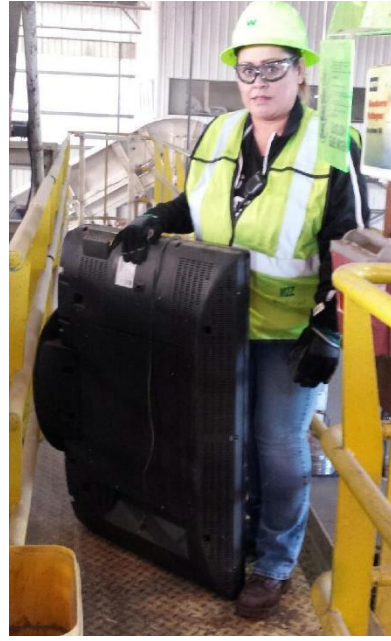
NO Cups with Plastic or Wax Coating



NO Polystyrene Foam & Plastic



Single Stream = Contamination



Current State of the Market



In 2017, over 25% of world's recyclables were imported by China, including >50% of paper & plastics. Today <2% of mixed paper goes to China with ~70K tpm believed to be landfilled



China's new import policies banning materials & limiting contamination have global impacts on recycling programs in communities across US



Operation Blue Sky = screening effort at China's ports to inspect loads, enforce material bans & 0.5% contamination limit



The reduction of China's markets resulted in oversupply of commodities & depressed commodity pricing. Supply is high & commodity pricing low



Cities are being forced to carefully examine their recycling programs, making difficult decisions about their rates and materials



Consumers still want to recycle and recognize its environmental value, but the economics have evolved



Recyclables become trash in two South Florida cities



Recycling is in trouble — and it might be your fault



Increasing Contamination

The average contamination across the United States is over 28%

- **More Contamination = Increased Labor Costs**
 - ✓ Locally the MRF has had to add extra people per shift to meet new contamination reduction levels
- **More Contamination = Less Recycling Materials per Load**
 - ✓ We must pay to dispose of the trash

28% = 580 pounds of contamination

.5% = 10 pounds of contamination in a ton of recyclables (China threshold)



WM's Response to New Mandates

- **WM continues to move commodities, although at lower prices and to a broad variety of vendors across the globe:**
 - ✓ Our primary goal is to move material - avoiding landfilling/warehousing
 - ✓ Plastic is moving to domestic buyers
 - ✓ Paper is moving to domestic mills, and to India, Vietnam, Malaysia, and South Korea
 - ✓ Explore, partner and develop recycle technologies
- **Pricing and markets are likely to continue to be extremely volatile in the next few years**
 - ✓ Quality will impact pricing and movement. Quality, quality, quality is important.
- **WM has not dropped material from its curbside recycling programs**
 - ✓ There are some cities/recyclers have dropped mixed plastics from their programs

What has this meant for Sandy?

- We put forth an educational campaign to reduce contamination and educate customers on the “do’s and don’ts” of recycling
 - Waste Management MRF tours
 - Flyers “Mailer last May”
 - Facebook Live Videos
 - Recycle Often Recycle Right
- We are asking our communities to help us in this endeavor, through education sharing and cost sharing.
- Our message is **“When in doubt, throw it out.”**

We will continue to work with customers to improve quality at the curb, and to diversify end markets.

It's time to get back to the basics of good recycling.



Recycle empty plastic bottles, cans, paper and cardboard.



Keep food and liquid out of your recycling.



Empty recyclables directly into your cart. NO bagged recyclables. Return plastic bags to a local grocer.

Social Media & Bill Insert Outreach



RECYCLE OFTEN.
RECYCLE RIGHT.



Always recycle:



Empty Plastic Bottles & Containers



Empty Food & Beverage Cans



Empty Glass Bottles & Jars



Clean Cardboard & Paperboard



Clean Paper

Do NOT put in your recycling cart:



NO Food or Liquids



NO Plastic Bags or Film
(Do not bag recyclables)



NO Clothes or Bedding





NO Foam Cups or Containers



NO Yard Waste

RecycleOftenRecycleRight.com
2017





wastemanagement

6,411 subscribers

HOME
VIDEOS
PLAYLISTS
CHANNELS
DISCUSSION
ABOUT

The People of Waste Management

4,288 views • 2 months ago

This video is a story about people. Our people. Our family. It's a story about humans helping other humans, even when no-one is looking. When we take care of our Waste Management family first, they can then take care of the world and all of our constituents – our customers, our communities, our investors and our environment.

Waste Management

October 16 at 9:22 AM

Plastic bags can disrupt our recycling process. Please remember to keep plastic bags out of your recycling bin. Learn how to recycle right at RORR.com

BUY, FILL, GONE.

1.5K views • 1/2 months ago

clutter is definitely something to sing about. www.thebagster.com



Tagging Contaminated Carts

CONTAMINATION NOTICE

NOTIFICACIÓN DE CONTAMINACIÓN

Account Address Dirección de la cuenta: _____

Date Fecha: _____

Your recycling container is determined to be contaminated with materials that are not accepted in the recycling program:

Se ha determinado que su contenedor de reciclaje está contaminado con materiales que no son aceptados en el programa de reciclaje:

- Plastic Bags & Materials in Plastic Bags**
Bolsas de plástico y residuos en bolsas de plástico
- Furniture & Carpet**
Muebles y alfombras
- Foods or Liquids**
Alimentos o líquidos
- Clothing & Textiles**
Ropa y textiles
- Green or Yard Waste**
Residuos orgánicos o residuos de jardín
- Other Otro:** _____

- Your container was contaminated but collected. You may receive a contamination charge.
Su contenedor estaba contaminado, pero fue recolectado. Es probable que reciba un cargo por contaminación.
- Your container was substantially contaminated and had to be picked up by a trash truck. You may receive an additional charge as a result of handling the contamination.
Su contenedor estaba contudentemente contaminado y tuvo que ser recogido por un camión de residuos sólidos. Es probable que reciba un cargo adicional por el manejo de la contaminación.

If you have any additional questions about what can and can't be recycled, please visit www.RORR.com
Si tiene preguntas adicionales sobre lo que se puede o no reciclar, visite por favor www.RORR.com

Contamination Policy
To avoid future notices and fees, make sure to sort your recyclables accordingly. Recycling containers are considered contaminated if they include solid waste (trash), organic/yard waste materials, or other non-recyclable materials.

Política de contaminación
Para evitar futuras notificaciones y cargos, asegúrese de clasificar sus materiales reciclables según corresponda. Los contenedores de reciclaje se consideran contaminados si contienen residuos sólidos (basura), residuos orgánicos/residuos de jardín u otros materiales no reciclables.



© 2018 WMM Intellectual Property Holdings, L.L.C.

CONTAMINATION NOTICE

NOTIFICACIÓN DE CONTAMINACIÓN

Account Address Dirección de la cuenta: _____

Date Fecha: _____

Your recycling container is determined to be contaminated with materials that are not accepted in the recycling program:

Se ha determinado que su contenedor de reciclaje está contaminado con materiales que no son aceptados en el programa de reciclaje:

- Your container was contaminated but collected. You may receive a contamination charge. *Su contenedor estaba contaminado, pero fue recolectado. Es probable que reciba un cargo por contaminación.*
- Your container was substantially contaminated and had to be picked up by a trash truck. You may receive an additional charge as a result of handling the contamination. *Su contenedor estaba contudentemente contaminado y tuvo que ser recogido por un camión de residuos sólidos. Es probable que reciba un cargo adicional por el manejo de la contaminación.*

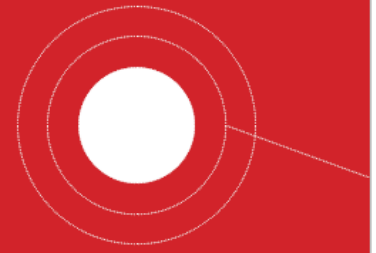
If you have any additional questions about what can and can't be recycled, please visit www.RORR.com
Si tiene preguntas adicionales sobre lo que se puede o no reciclar, visite por favor www.RORR.com

Contamination Policy
To avoid future notices and fees, make sure to sort your recyclables accordingly. Recycling containers are considered contaminated if they include solid waste (trash), organic/yard waste materials, or other non-recyclable materials.

Política de contaminación
Para evitar futuras notificaciones y cargos, asegúrese de clasificar sus materiales reciclables según corresponda. Los contenedores de reciclaje se consideran contaminados si contienen residuos sólidos (basura), residuos orgánicos/residuos de jardín u otros materiales no reciclables.



© 2018 WMM Intellectual Property Holdings, L.L.C.



Your recycling has garbage in it.
Hay basura en su reciclaje.

We found one or more of the following items:
Encontramos uno o más de los siguientes artículos:

- Recyclables bagged in plastic bags
Artículos reciclables en bolsas de plástico
- Loose plastic bags
Bolsas de plástico sueltas
- Dirty/wet items (like food and liquids left in your recycling)
Artículos mojados y/o sucios (no deje alimentos o líquidos en sus artículos reciclables)
- Non-recyclable items (like garden hoses or propane tanks)
Artículos no reciclables (como mangueras de jardín o tanques de gas propano)
- Other Otro: _____

When in doubt, leave it out.
Si tiene alguna duda, déjelo afuera.

Your Waste Management Driver - *Su conductor de Waste Management*

- As a courtesy, we picked up your recycling. Please keep garbage out to avoid service interruptions or penalties.
Como cortesía, recolectamos su reciclaje. Por favor mantenga la basura fuera para prevenir interrupciones de servicio o penalizaciones en el futuro
- We had to leave your recycling behind. Please sort out the garbage and we'll try again on your next service day.
No pudimos recolectar su reciclaje. Por favor saque la basura y tratemos de nuevo el próximo día de servicio

Customer Service 661-947-7197
Servicio al Cliente

Please tear here - *Por favor recorte en esta sección*

ADDRESS DIRECCIÓN _____

DRIVER CONDUCTOR _____

ROUTE # NO. DE RUTA _____ DATE FECHA _____



THINK GREEN.®

Why WM Continues To Be the Right Partner Through This?



WM is a committed partner, creating shared value & long-term solutions for our customers



RECYCLE OFTEN.
RECYCLE RIGHT.

WM is the only company that has invested in a national, comprehensive, turn-key education program



WM provides security, stability & peace of mind



WM is committed to single-stream recycling, WM Utah received approval to build \$15 Million Dollar Recycling Facility

Waste Management Resources



[Myths](#)

[Resources](#)

[Get Started](#)

[Newsroom](#)

[Social](#)



RECYCLE OFTEN.
RECYCLE RIGHT.SM



Recycle all my empty bottles, cans, and paper.



Keep foods and liquids out of my recycling.



Keep plastic bags out of my recycling.



THINK GREEN.[®]