

RESOLUTION #24-51C

SHOSHONE ANNEXATION

A RESOLUTION INDICATING INTENT TO ANNEX AN UNINCORPORATED AREA, SETTING A HEARING TO CONSIDER SUCH AN ANNEXATION, AND DIRECTING PUBLICATION OF HEARING NOTICE

The City Council of Sandy City, State of Utah, finds and determines as follows:

1. Sandy City (“**City**”) desires to annex parcels of contiguous unincorporated area, totaling approximately 10.23 acres, located at Shoshone Avenue, Shoshone Circle and Shoshone Court. The parcels of land are currently in Salt Lake County, Utah, and more specifically shown on the map attached hereto as **Appendix “A”**.
2. The annexation of that portion of an island or peninsula, leaving unincorporated the remainder of that island or peninsula, is in the City’s best interests.

NOW, THEREFORE, BE IT RESOLVED by the City Council of Sandy City, Utah that it does hereby:

1. Indicate the City Council’s intent to annex the area described in **Appendix “A”**.
2. Determine that not annexing the entire unincorporated island or unincorporated peninsula is in the City’s best interest.
3. Indicate the City Council’s intent to withdraw the area described in **Appendix “A”** from the municipal services district.
4. Set a public hearing for December 10, 2024, no earlier than 5:15 p.m. to consider the annexation.
5. Direct the City Recorder to publish and send notice of such hearing in accordance with Utah Code.

ADOPTED by the Sandy City Council this 22 day of October, 2024.

DocuSigned by:



2B09B8A417C845C...

Zach Robinson

Sandy City Council Chair

ATTEST:

DocuSigned by:



688E7E8272044B1...

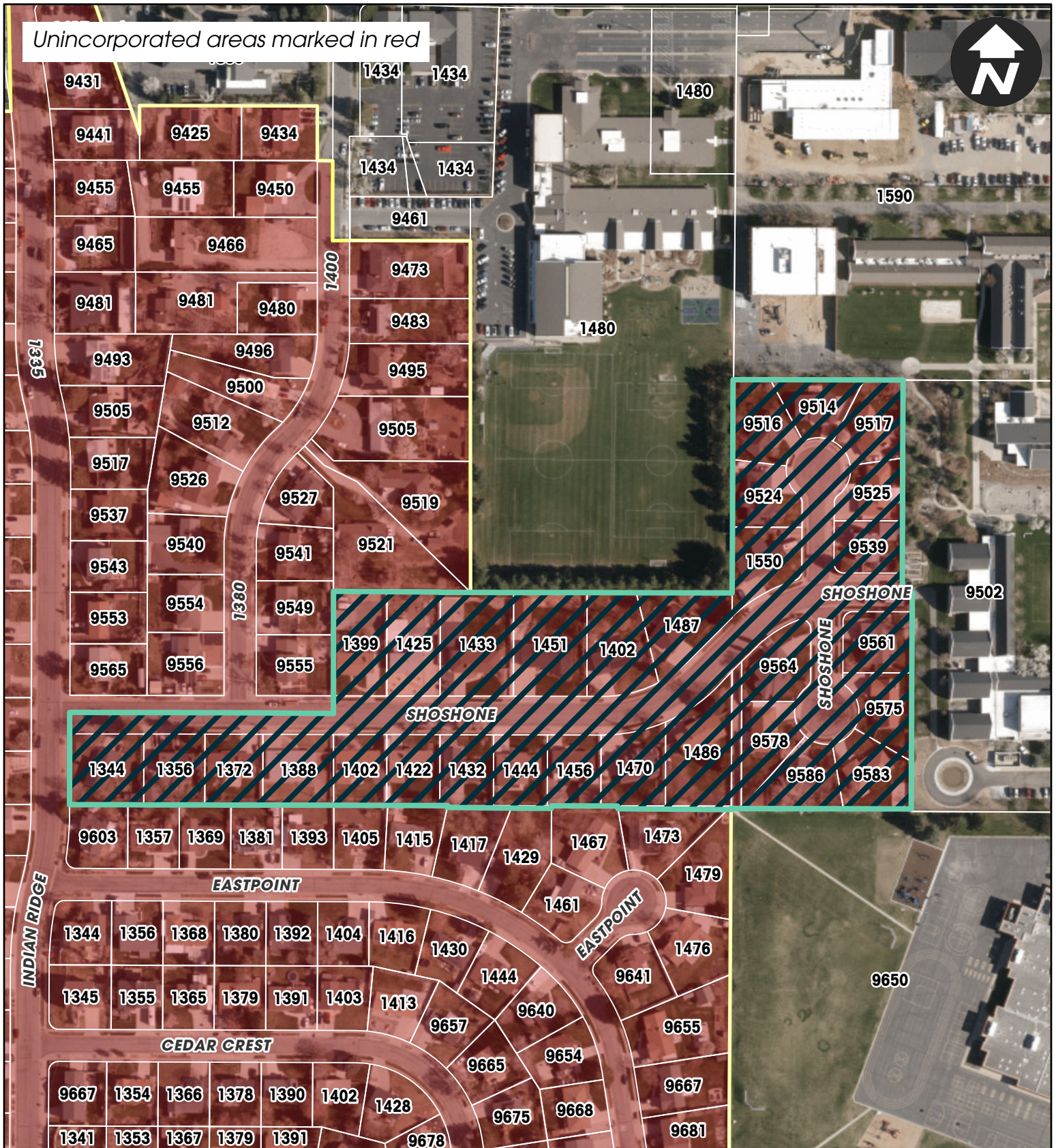
City Recorder

RECORDED this 23 day of October, 2024.



Appendix “A”

Unincorporated areas marked in red



Shoshone Annexation



Subject Property