

**RESOLUTION #26-51C**

LA CAILLE 2 ANNEXATION

A RESOLUTION INDICATING INTENT TO ANNEX AN UNINCORPORATED AREA,  
SETTING A HEARING TO CONSIDER SUCH AN ANNEXATION, AND DIRECTING  
PUBLICATION OF HEARING NOTICE

The City Council of Sandy City, State of Utah, finds and determines as follows:


1. Sandy City (“City”) desires to annex parcels of contiguous unincorporated area, totaling approximately 7.82 acres, for properties located at 9561, 9563, and remainder of 9565 S. Wasatch Blvd (parcels owned by Kevin P Gates, Holladay 2550 LLC and LLC. Chateau LaCaille). The parcels of land are currently in Salt Lake County, Utah, and more specifically shown on the map attached hereto as Appendix “A”.

2. The annexation of that portion of an island or peninsula, leaving unincorporated the remainder of that island or peninsula, is in the City’s best interests.

NOW THEREFORE, BE IT RESOLVED BY THE CITY COUNCIL OF SANDY CITY AS FOLLOWS:

1. Indicate the City Council’s intent to annex the area described in Appendix “A”.
2. Determine that not annexing the entire unincorporated island or unincorporated peninsula is in the City’s best interest.
3. Indicate the City Council’s intent to withdraw the area described in Appendix “A” from the municipal services district.
4. Set a public hearing for May 12, 2026, no earlier than 5:15 p.m., to consider the annexation.
5. Direct the City Recorder to publish and send notice of such hearing in accordance with Utah Code.

ADOPTED by the Sandy City Council this 7th day of April, 2026.

Signed by:  
  
02C671B7B4514E8...  
\_\_\_\_\_  
Cyndi Sharkey, Chair  
Sandy City Council

**ATTEST:**



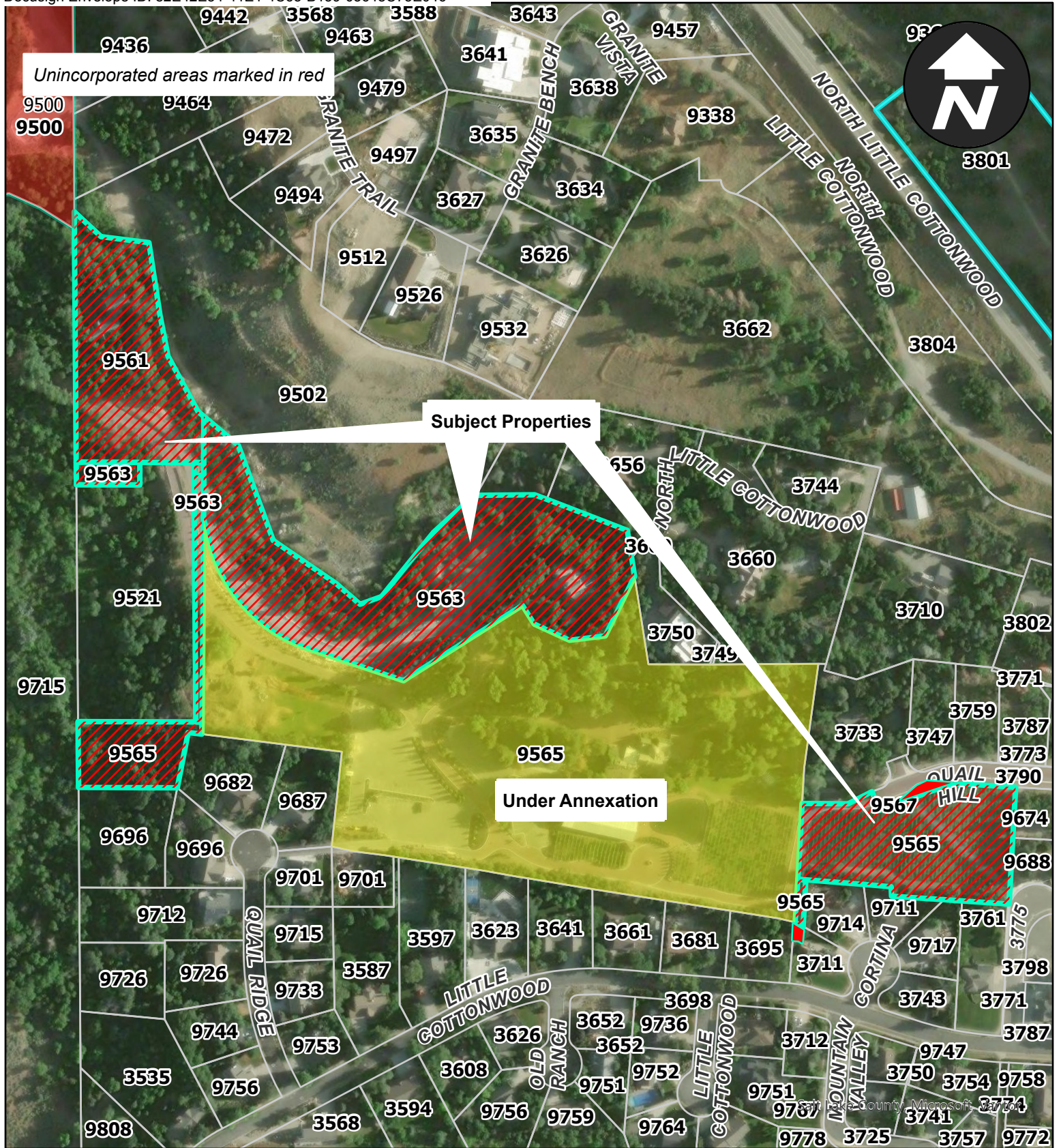
DocuSigned by:

*Wendy P.*

698E7E8272914B1...  
City Recorder

RECORDED this 8th day of April, 2026.

## **APPENDIX “A”**



# LaCaille 2 Annexation

## 9561, 9563, and remainder of 9565 S Wasatch Blvd parcels

Community Development Department