

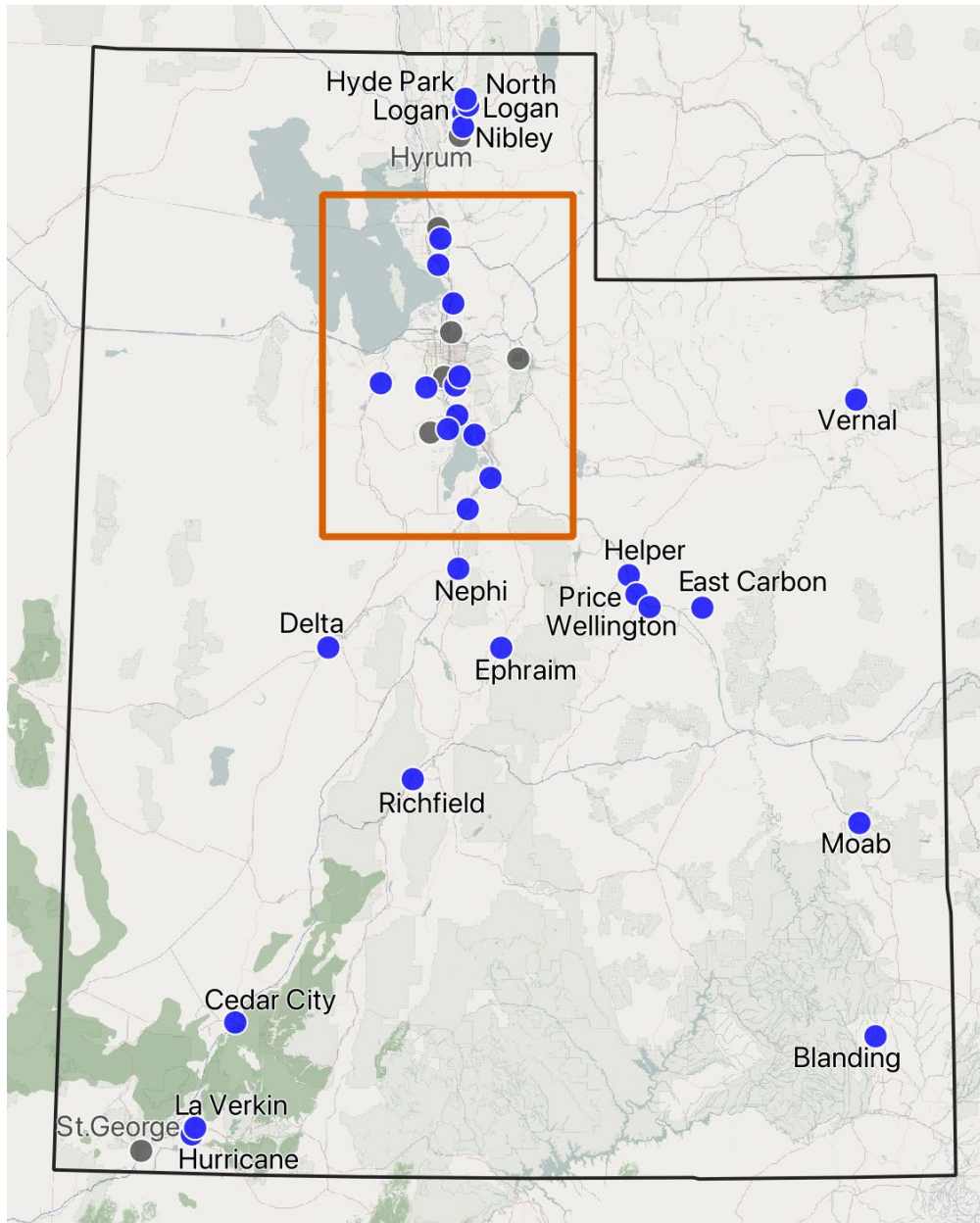


Wellbeing in Sandy

Results from 2021 Utah Wellbeing Study Survey

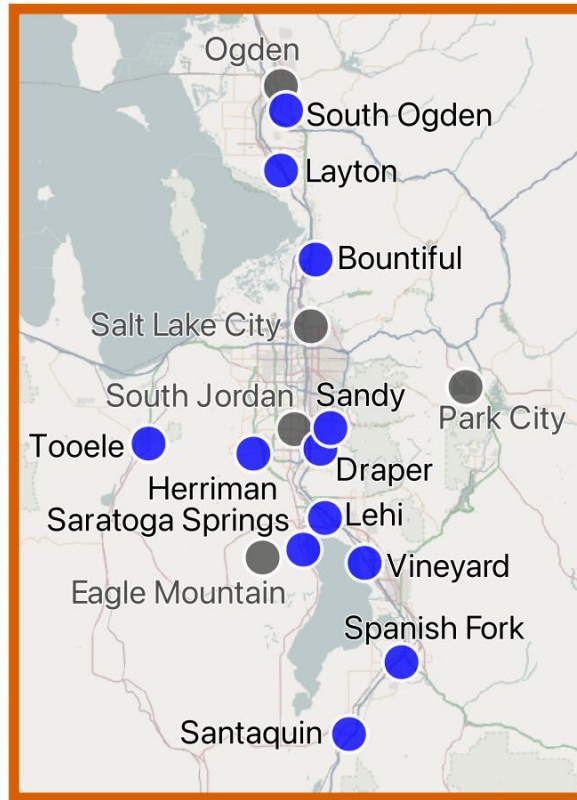
Dr. Courtney Flint

courtney.flint@usu.edu



Participating Cities

- Participating in 2021
- Prior participant; not participating in 2021



Project Goal:
To provide Utah city leaders with information on the wellbeing and perspectives of residents to inform planning processes and decision making.

Findings may help work with American Rescue Plan Funds available to cities.

Sandy's Survey Results are Online

Sandy city report available on the Utah Wellbeing Project website

- <https://extension.usu.edu/business-and-community/utah-wellbeing-project/>

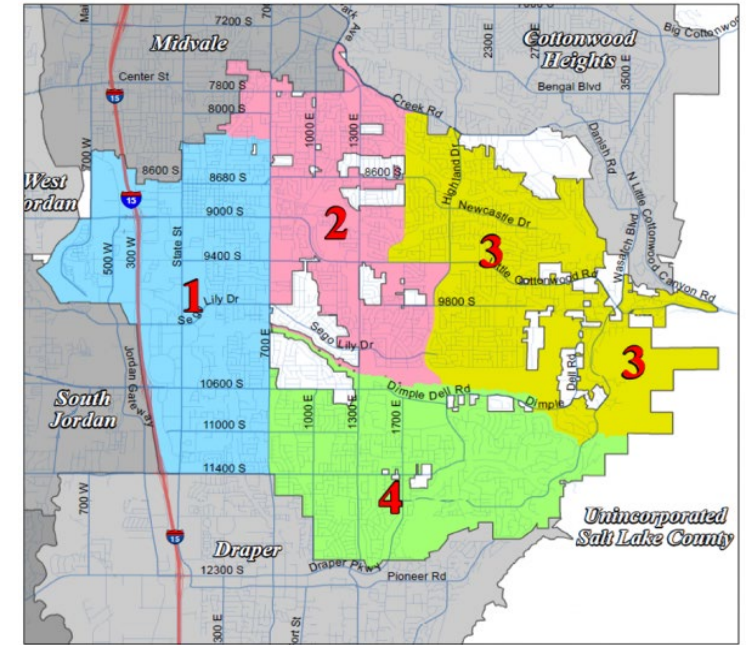
Statewide, county, and other city reports also available.

Sandy Wellbeing Survey

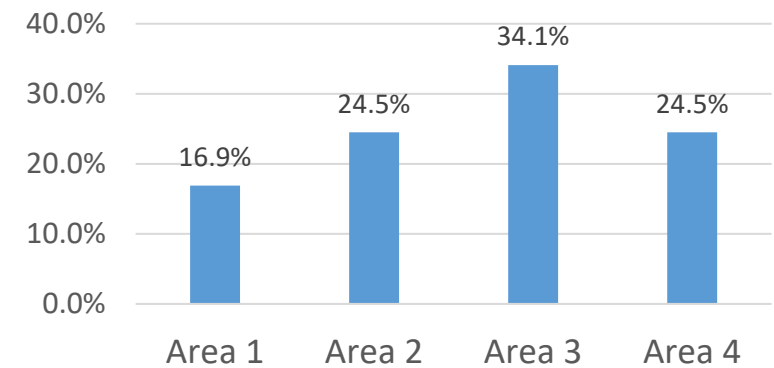
- Online Qualtrics Survey in February 2021
- Partnership with Sandy City on recruitment
- 1,159 surveys recorded

Demographic Overview

- Average length of residence 21 years (0-77 years)
- 43% from Church of Jesus Christ of Latter-day Saints
- Survey underrepresents
 - Age 18-29
 - Males
 - No college degree
 - Income under \$50,000
 - Hispanic/Latino
 - Non-married
 - Renters



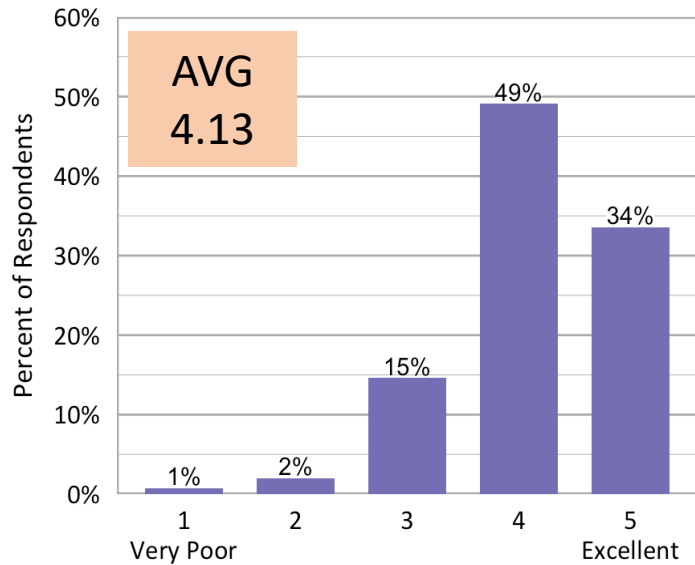
Survey Participation from Sandy Areas



Personal Wellbeing in Sandy

Personal Wellbeing in Sandy

How would you rate your overall personal wellbeing?

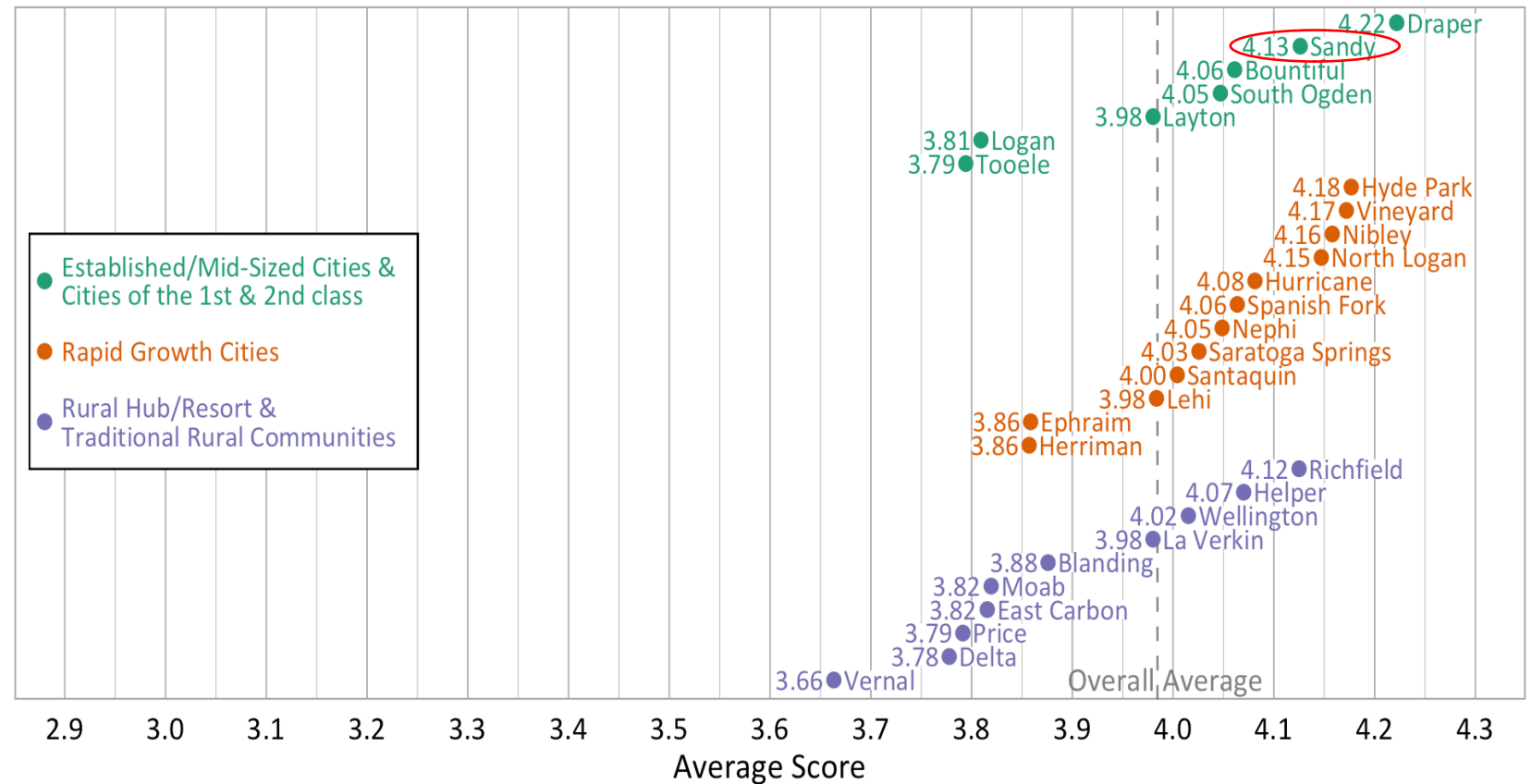


83% said 4 or 5

No statistically significant differences across 4 Sandy areas.

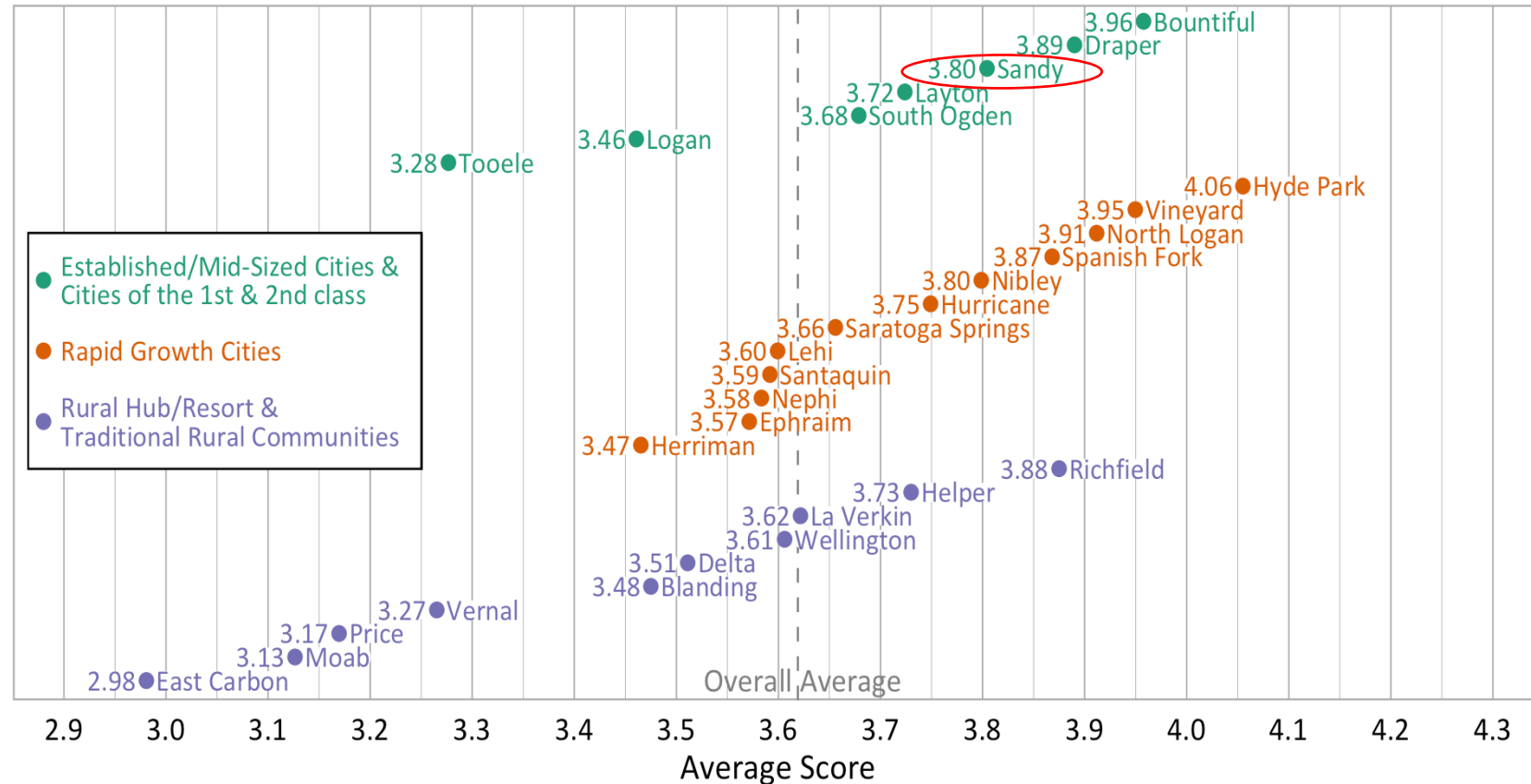
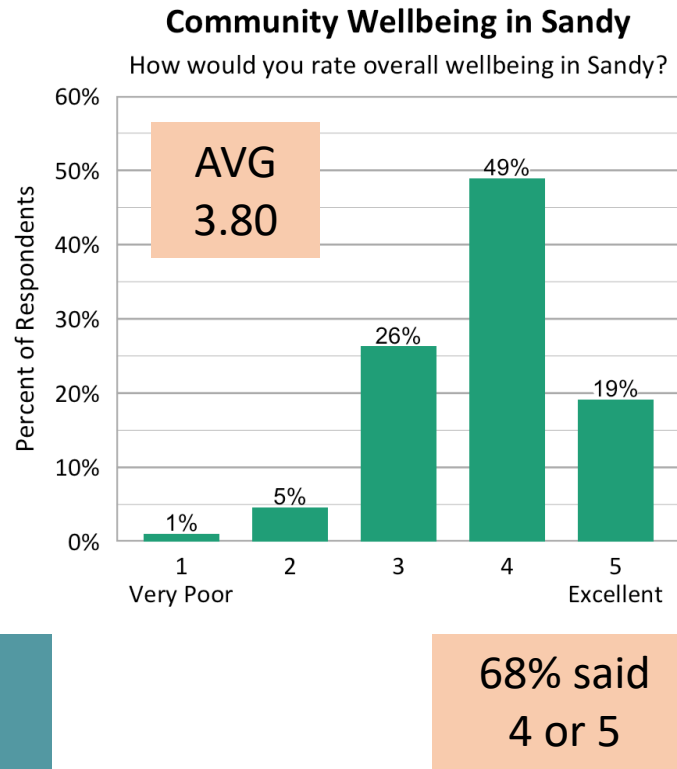
Overall Personal Wellbeing Scores from Participating Utah Cities (2021)

(On a scale from 1=Very Poor to 5=Excellent)



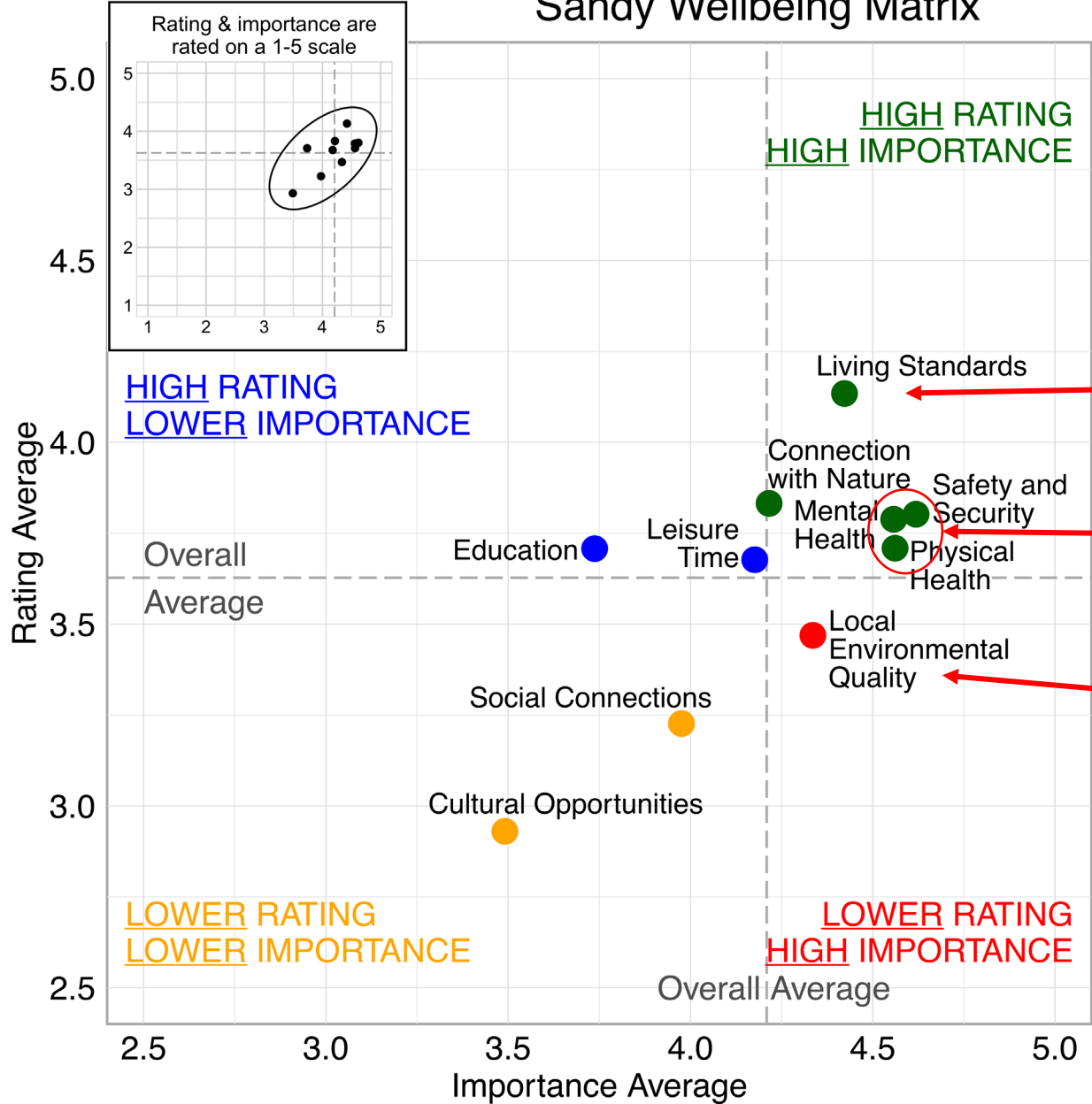
Community Wellbeing in Sandy

Overall Community Wellbeing Scores from Participating Utah Cities (2021)
(On a scale from 1=Very Poor to 5=Excellent)



No statistically significant differences across 4 Sandy areas.

Sandy Wellbeing Matrix



Wellbeing varied within Sandy based on demographic characteristics:

- Age 60+ and higher incomes → higher WB
- Females → WB domains more important
- Latter-day Saints → Connection with Nature and Local Environmental Quality less important

Highest Rated Domain

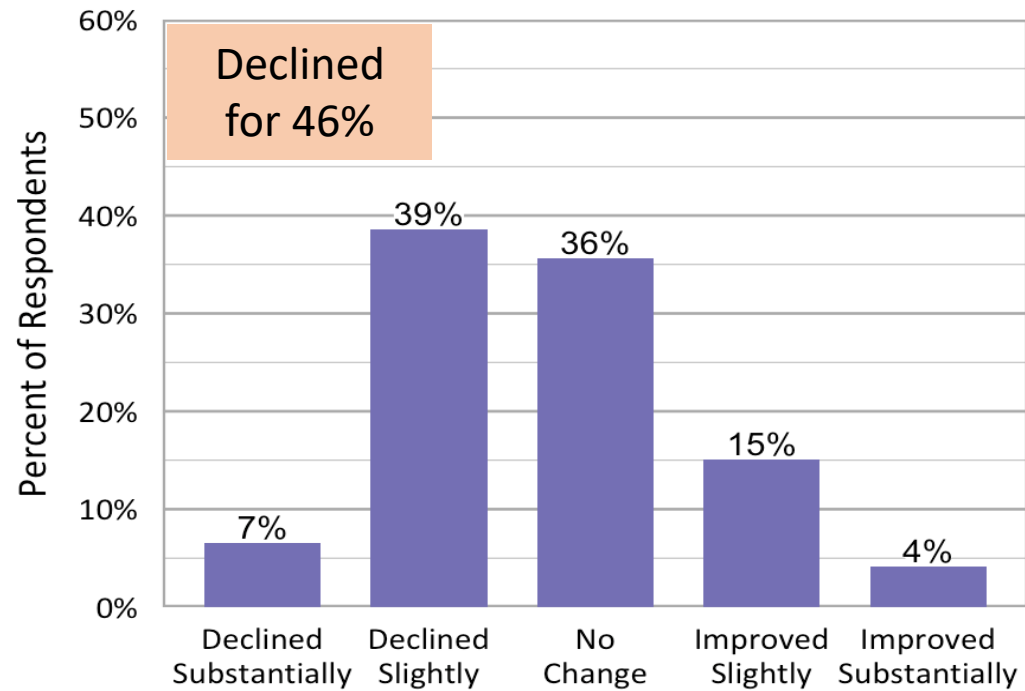
Most Important Domains

Red Zone Domain
(High Importance, Lower than Average Rating)

Sandy's COVID-19 Experience

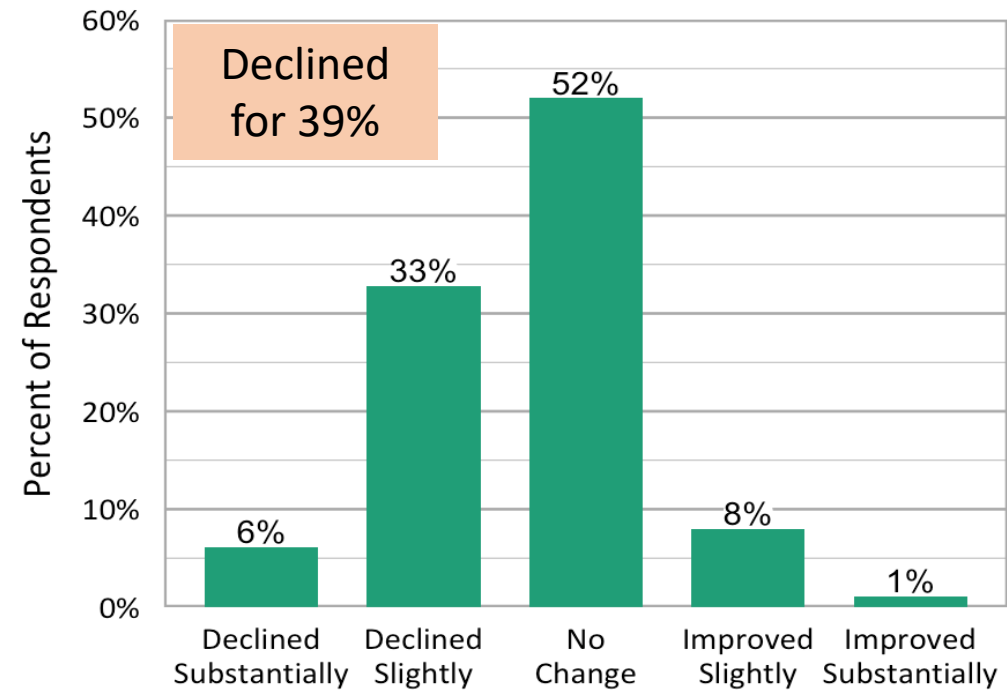
Personal Wellbeing Change in Sandy

Has your overall personal wellbeing changed in the last year?



Community Wellbeing Change in Sandy

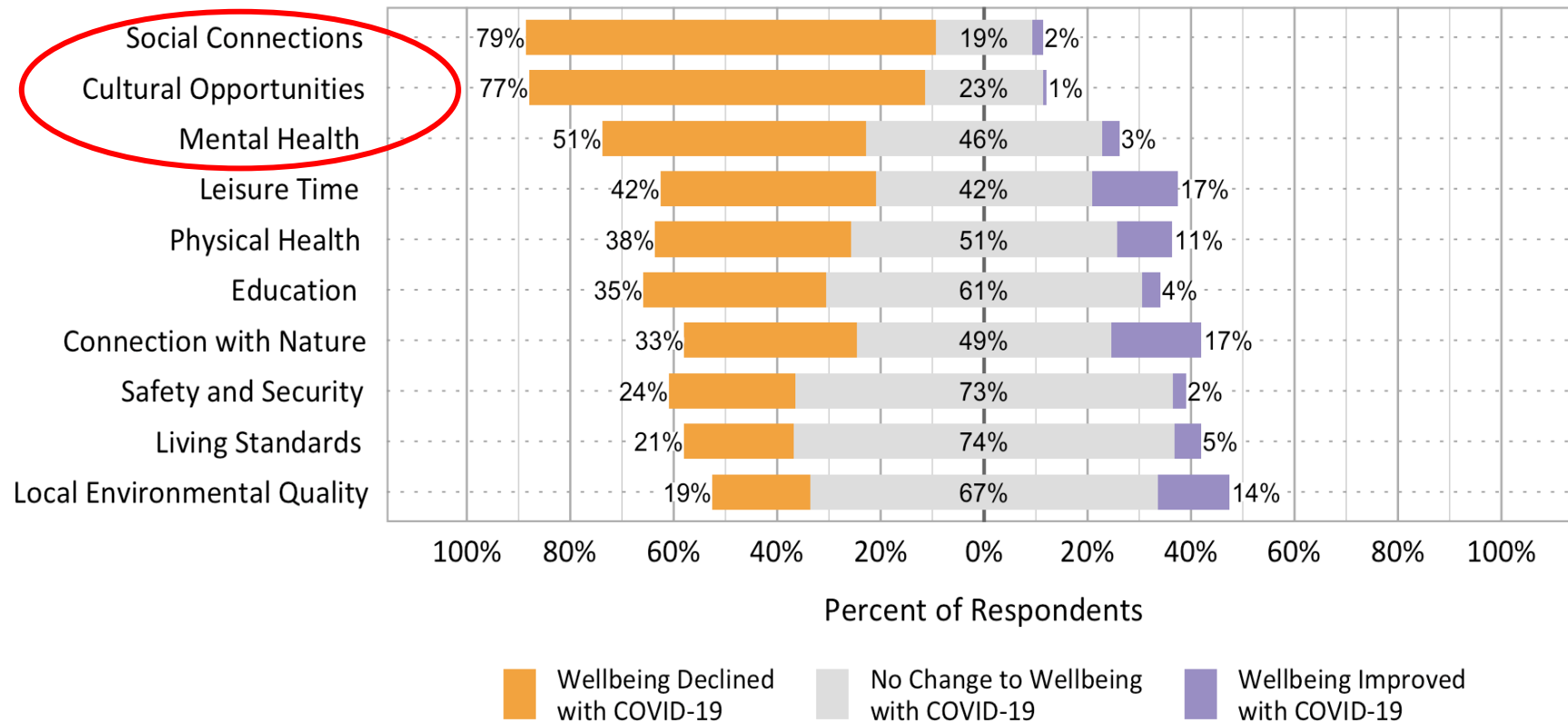
Has overall wellbeing in Sandy changed in the last year?



Sandy's COVID-19 Experience

The COVID-19 Pandemic's Affect on Wellbeing Domains in Sandy

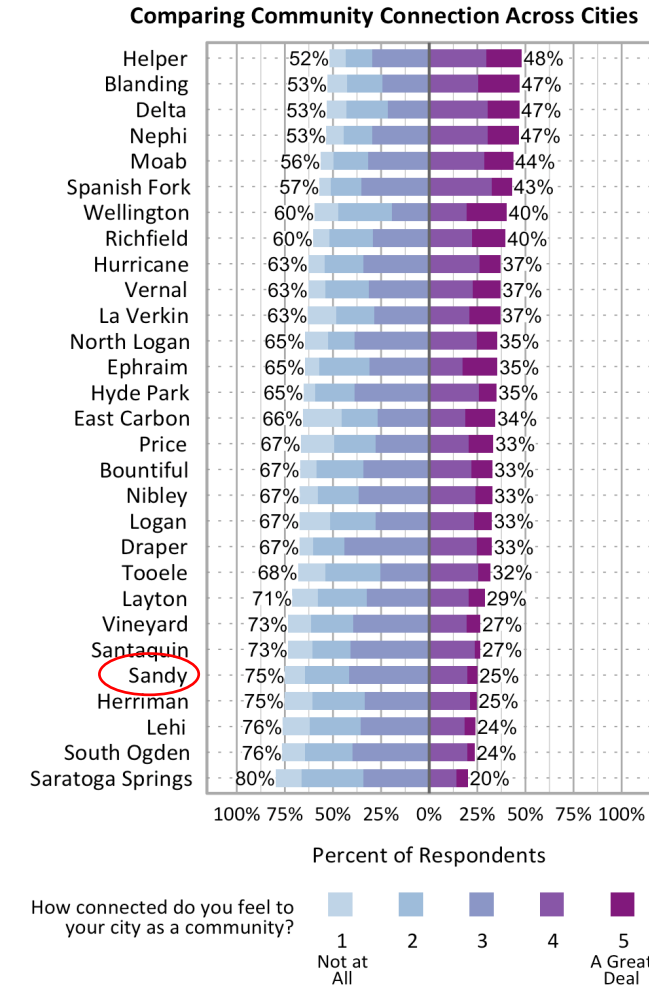
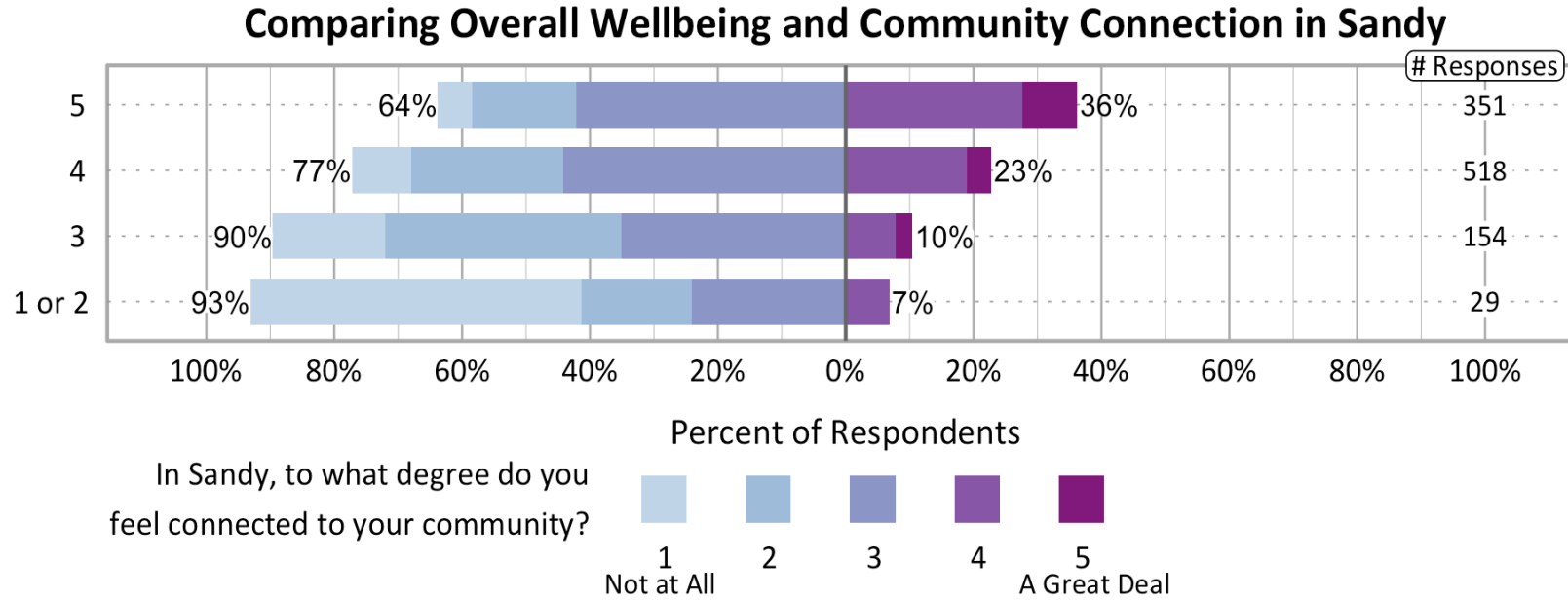
Have any of these categories of your personal wellbeing been affected by the COVID-19 pandemic?



- Mental health was more likely to decline for female respondents and less likely to decline for those age 60+.
- Physical health was more likely to decline for those with lower incomes and less likely to decline for those age 60+ than those age 40-59.

Community Connections

How would you rate your overall personal wellbeing?



Connectedness was higher for those age 60+, Latter-day Saints, those with higher incomes, and those living in Sandy 5+ years

Building Community Connections

Community
Design

Community
Activities

Animal
Relationships

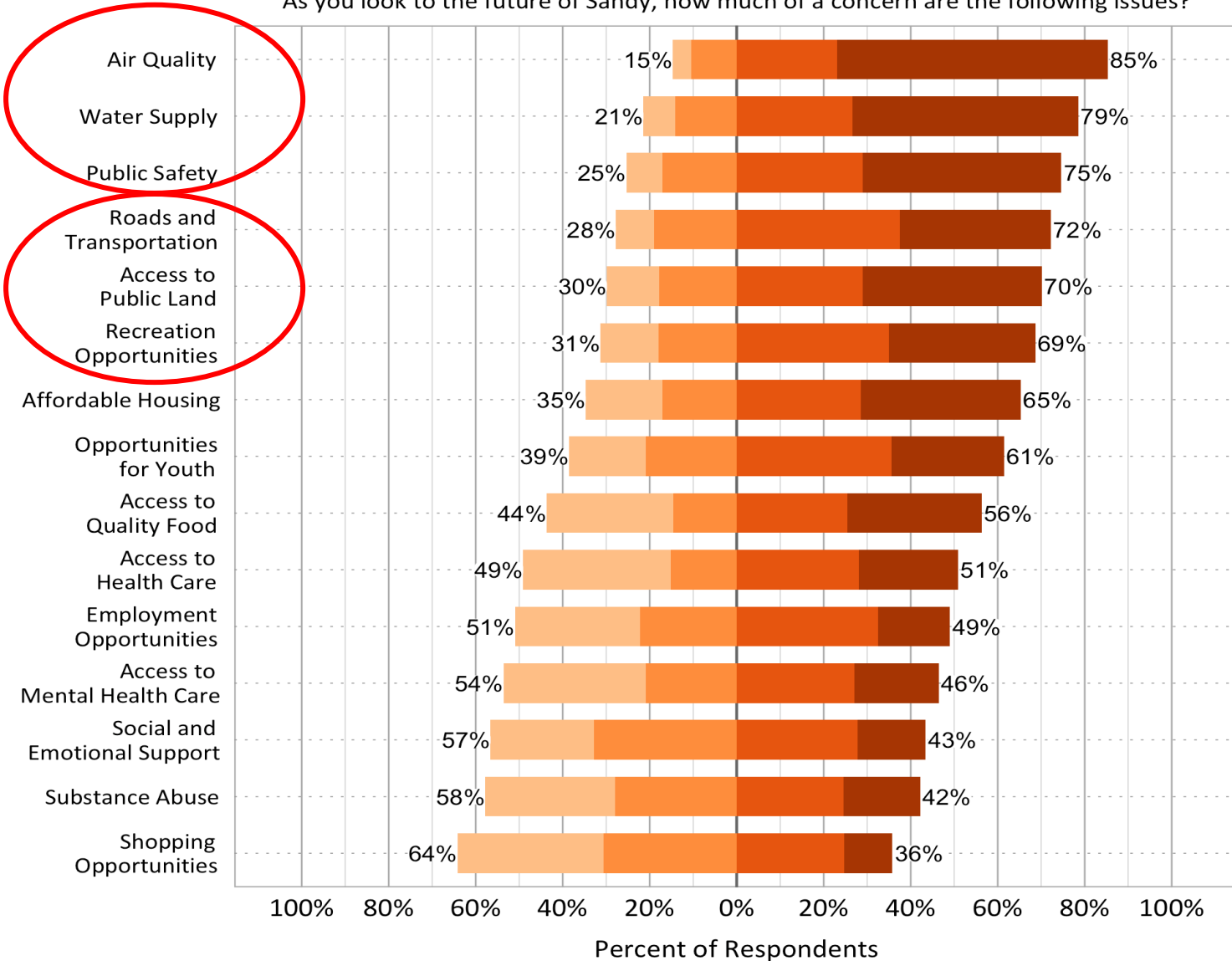


Concerns in Sandy

As you look to the future of Sandy, how much of a concern are the following issues?

Over 3/4 of Sandy Respondents with Major or Moderate Concern

Over 2/3 of Sandy Respondents with Major or Moderate Concern

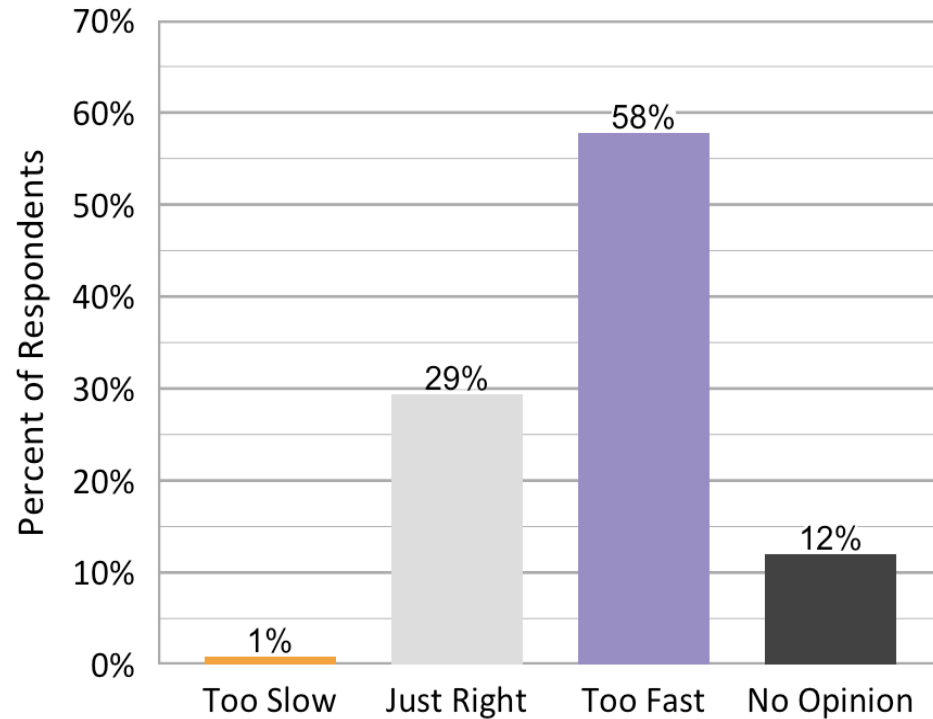


Not a Concern at All
 Slight Concern
 Moderate Concern
 Major Concern

Population and Economic Growth

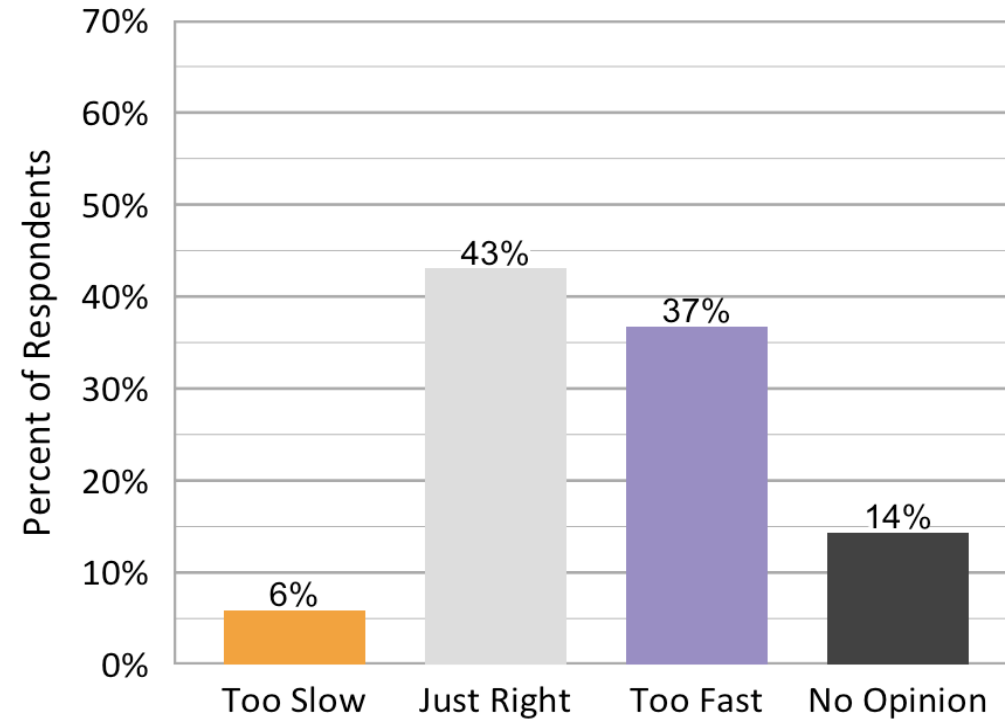
Population Growth in Sandy

How would you describe the current rate of population growth in Sandy?



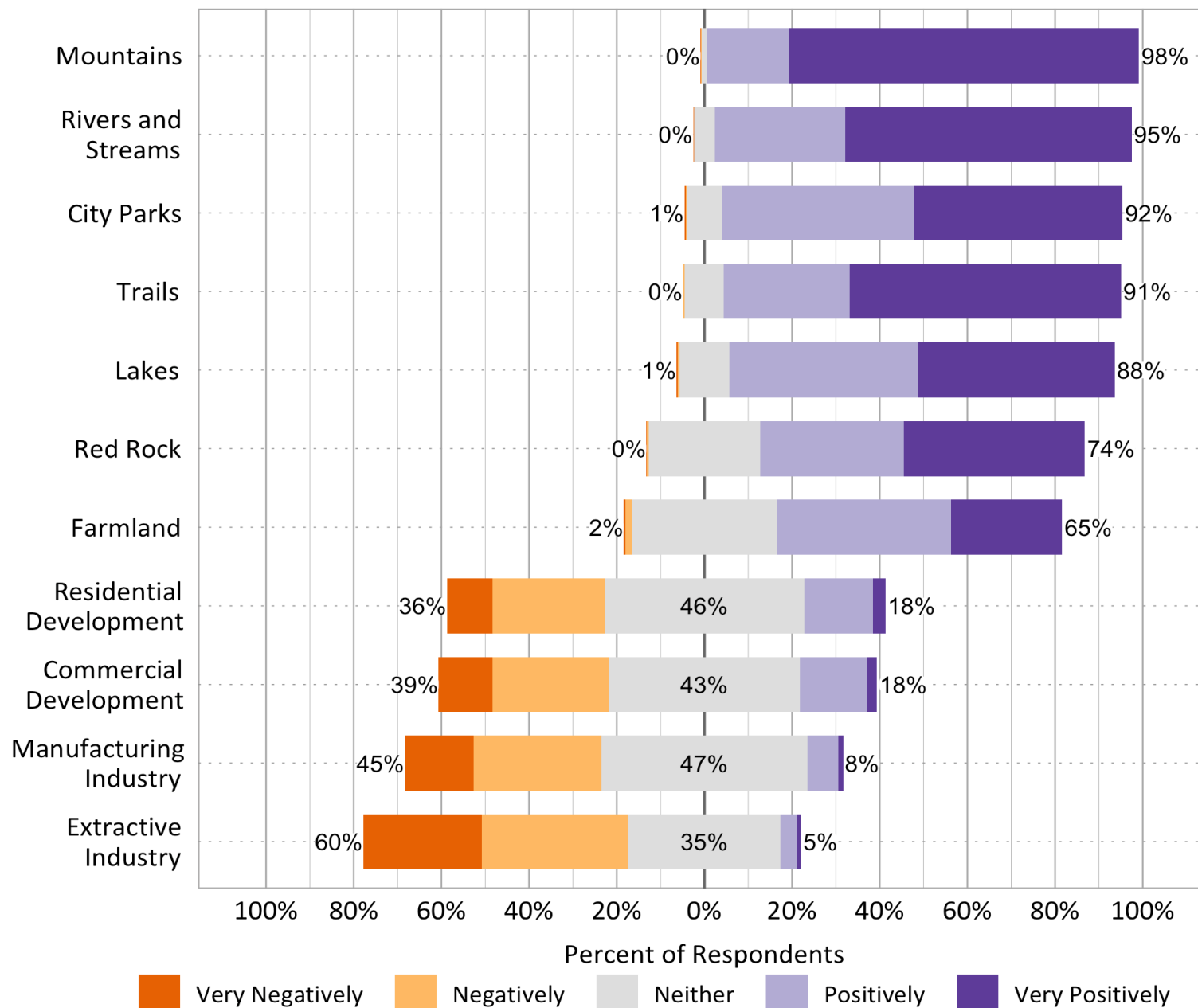
Economic Development in Sandy

How would you describe the current pace of economic development in Sandy?



The Role of Landscape Features in Sandy Residents' Wellbeing

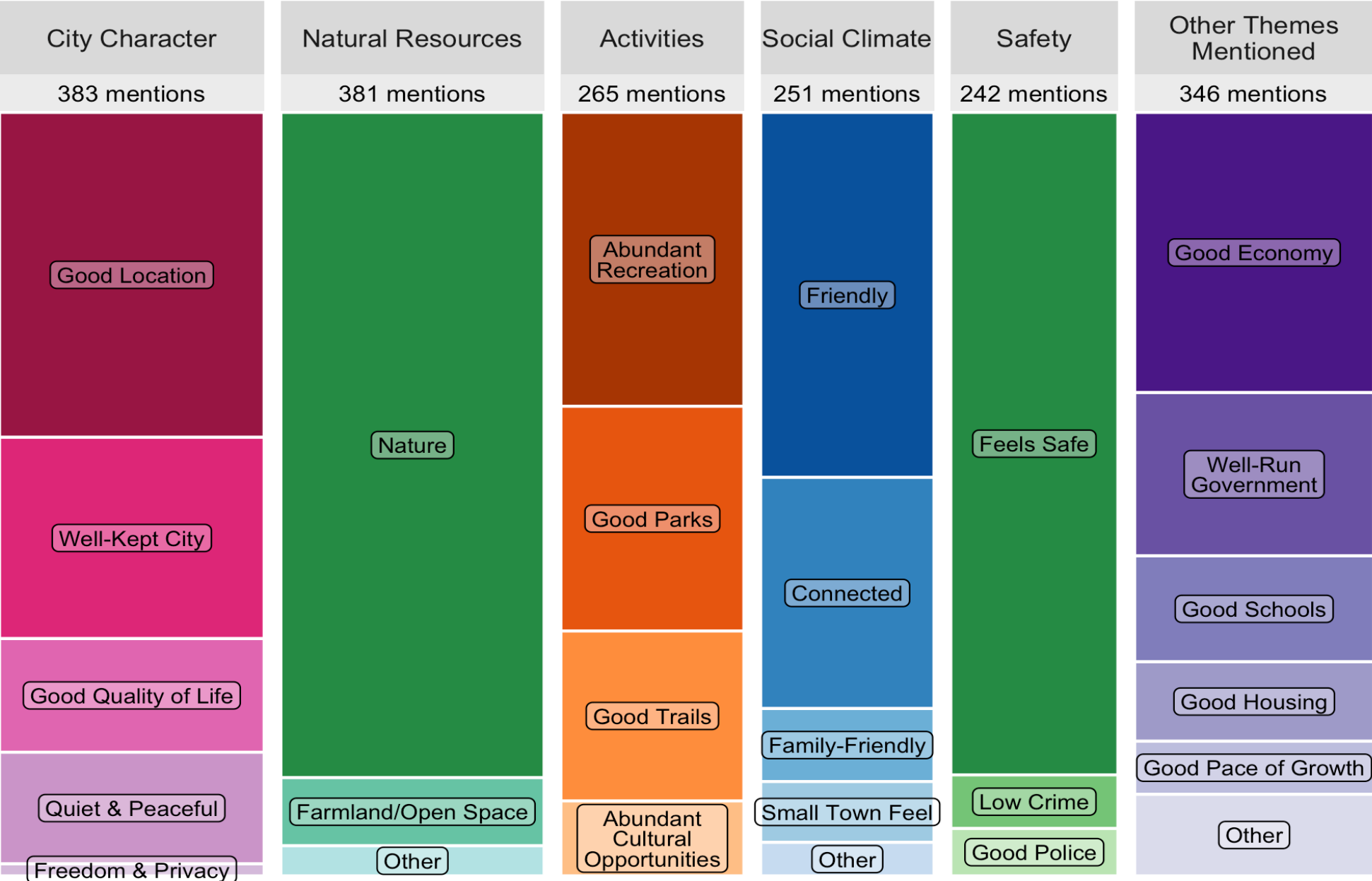
How does the presence of the following landscape features influence your wellbeing?



Landscapes and Wellbeing

Open Comments: Community Values in Sandy

The size of the box is proportional to the number of times the theme was mentioned.



Plenty more findings in the report online!
<https://extension.usu.edu/business-and-community/utah-wellbeing-project/>

Wellbeing Resource Dashboard coming in 2022!

Thank you!
Any Questions?