



TRANS-JORDAN

INTEGRATED SOLID WASTE MANAGEMENT

ORGANIZATION
UPDATE
PRESENTATION

JANUARY 2024





MEMBER CITIES

Trans-Jordan's primary function is to serve the solid waste needs of 500,000+ residents and commercial entities in the south portion of Salt Lake County

PAST, PRESENT, FUTURE

1958

**LANDFILL
CREATED**

Sandy &
West Jordan
original members

1960

**INTERLOCAL
CREATED**

Tri-Cities created
as Midvale joins

1968

**TRANS-JORDAN
CREATED**

Murray joins &
renamed
Trans-Jordan

1996

**ANNEXED INTO
SOUTH JORDAN**

South Jordan
joins

1997

FINAL CITIES JOIN

Riverton and
Draper join

2016

**NUERA & BAYVIEW
LANDFILL**

NUERA purchased
Bayview Landfill

2025

**SANDY
TRANSFER STATION**

Forecasted to open early
Spring 2025

2032

**SOUTH JORDAN
TRANSFER STATION**

Forecasted to open 2032

COMMITMENT TO MEMBER CITIES

Providing Solid Waste Solutions



LOW RATES

Member City tipping rate has been, and continues to be, one of the lowest in the nation

Member Cities pay \$24 per ton vs. \$39 per ton gate rate



ENVIRONMENTAL STEWARDSHIP

Trans-Jordan is in full compliance with all Local, State and Federal regulations. Each section of the landfill is engineered to ensure the we meet or exceed all requirements.



SAFETY FIRST FACILITY

The safety of our employees and customers is our top priority. Equipment and processes are constantly monitored and updated to ensure safe practices.



FORWARD THINKING

Trans-Jordan uses the latest technologies to ensure best outcomes such as compaction, drone flights, automated customer processing, etc.



LONG TERM COMMITMENT

Currently building and planning for two transfer stations. Secured the future of solid waste disposal for 60+ years by co-owning Bayview Landfill in Utah County



TRANS-JORDAN

INTEGRATED SOLID WASTE MANAGEMENT

Trans-Jordan is a committed partner with our community through the use of multiple solid waste management techniques



Landfills
Trans-Jordan
Bayview

Residential Services
including HHW
& Recycling

Transfer Stations

Landfill Gas To Energy Plants

SERVING OUR CUSTOMERS

- Hours of Operation
 - Monday – Saturday
7 a.m. – 6 p.m.
 - Hours maintained year round to accommodate residents
- We pride ourselves on providing a safe, clean, and efficient facility for our customers to dispose of their waste
- On a busy Saturday, Trans-Jordan will serve 2,000 customers



AUTOMATED SCALE



- Our new Automated Scale allows commercial accounts to use this scale resulting in quicker inbound processing
- City Trucks also have the RFID tag which allow them to use this lane
- Working toward 30% - 40% of incoming traffic using this scale



**412,991
TONS OF SOLID
WASTE
LANDFILLED**

2023
(Calendar Year)

SOLID WASTE DIVERSION FROM THE LANDFILL

2023 Calendar Year Waste Diverted and Recycled



METAL
739 Tons



HHW
(Household
Hazardous Waste)
246 Tons



**PAPER &
CARD
BOARD**
56 Tons



TIRES
71 Tons



BATTERIES
44 Tons

TRANS-JORDAN LANDFILL

- 4.7 Million tons of landfill space available at current site
- Approximately 8.5 years of life remaining with current economic projections (3% annual growth)
- After landfill closure the site will be maintained for 30+ years with adherence to POST closure requirements from EPA and DEQ





RESIDENTAL
DROP OFF



RECYCLING
DROP OFF



WASTE
TRANSFER



TIRE
RECYCLING



FREON
REMOVAL



HOUSEHOLD
HAZARDOUS
WASTE



PUBLIC CONVIENENCE CENTER

Residential Services



- HHW is oil, paint, batteries, and other household chemicals
- This material is taken free of charge from residents through a partnership with SLCoHD
 - (\$1.85 for every ton taken to landfill is set aside for the program)
- HHW that is dropped off but still useable is placed in our REUSE SHED and available for residents to pick up free of charge

HOUSEHOLD HAZARDOUS WASTE

SANDY CITY LANDFILL USAGE

2023 Calendar Year



CONTRACT / CURBSIDE

39,433 Tons
4,881 Visits



CITY OWNED TRUCKS

14,999 Tons
5,675 Visits



RESIDENTIAL / SMALL COMMERCIAL

3,755 Tons
4,965 Visits

SANDY CITY TRANSFER STATION

**Construction Already Commenced
Anticipated Opening Early Spring 2025**



SANDY TRANSFER STATION



**Located at
9000 S. 700 W.**
(Adjacent to Sandy City Public Works)

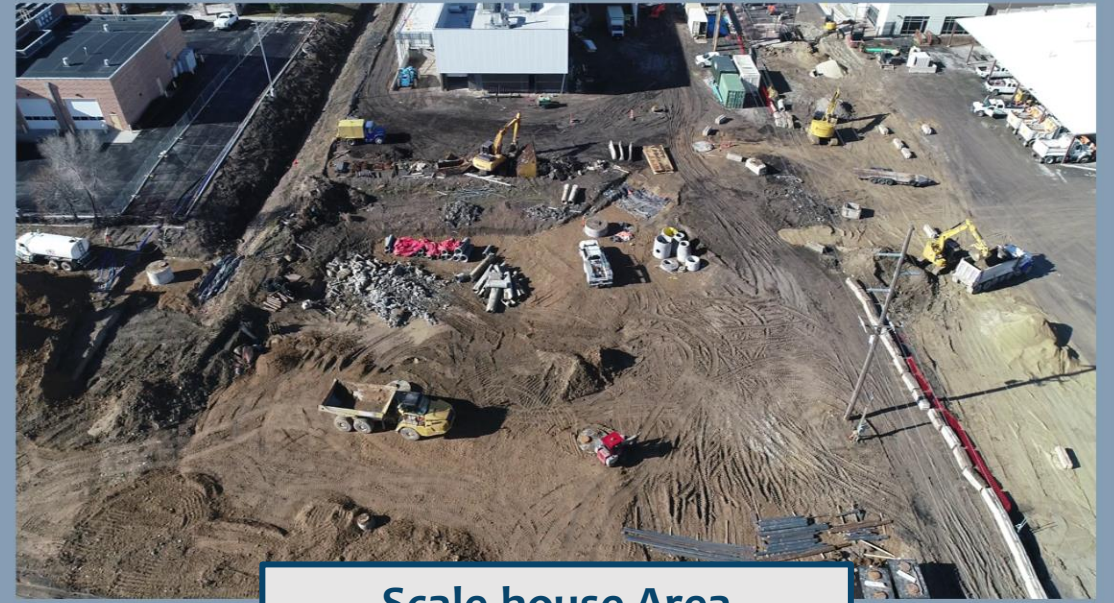
**Waste will come
to Trans-Jordan
Landfill until it
reaches capacity**



**SANDY
TRANSFER STATION
CONSTRUCTION PROGRESS**



East Elevation



Scale-house Area



HHW Facility

HOUSEHOLD HAZARDOUS WASTE FACILITY

- SLCohD has a new facility directly off of 700 west, in front of the Transfer Station
- This will be the HHW headquarters for Salt Lake County
- Owned and operated by SLCohD

SANDY TRANSFER STATION

Anticipated Stats

Incoming Tonnage: 200,000 Tons Per Year

Commercial Inbound Loads: 150 Trucks Per Day

Residential Loads (Saturdays): 400 Vehicles

Transfer Loads (Outbound): 27 Trucks



- **State of the Art Facility**
 - High-speed garage doors
 - Air filtration system
 - Enhanced lighting
- Large reduction of air pollutants, due to reduced distances traveled from east side haulers/customers
- Sheltered from weather/elements
- Disposal on concrete vs. dirt/mud
- Quicker turnaround for hauling companies



SANDY TRANSFER STATION OVERALL BENEFITS

SANDY TRANSFER STATION BENEFITS

What Are The Benefits To Different Customers

Member City

- Shorter distance for east side cities should result in better hauling rates
- Waste split between 2 disposal locations will result in quicker turn around times
- Next step in the long-term plans for disposal process

Residential

- Convenient location off 90th South and I15 gives residents on the east side of the valley a closer disposal option
- Transfer Station will be open to residential only on most Saturdays

Commercial

- Faster turn around for commercial clients with 2 automated inbound scales
- Ability to have a closer disposal option resulting in less fuel and wear on vehicles

LONG TERM DISPOSAL

Where Trans-Jordan is Headed

- In 2017 Trans-Jordan co-purchased Bayview Landfill to secure long-term disposal with these partners:

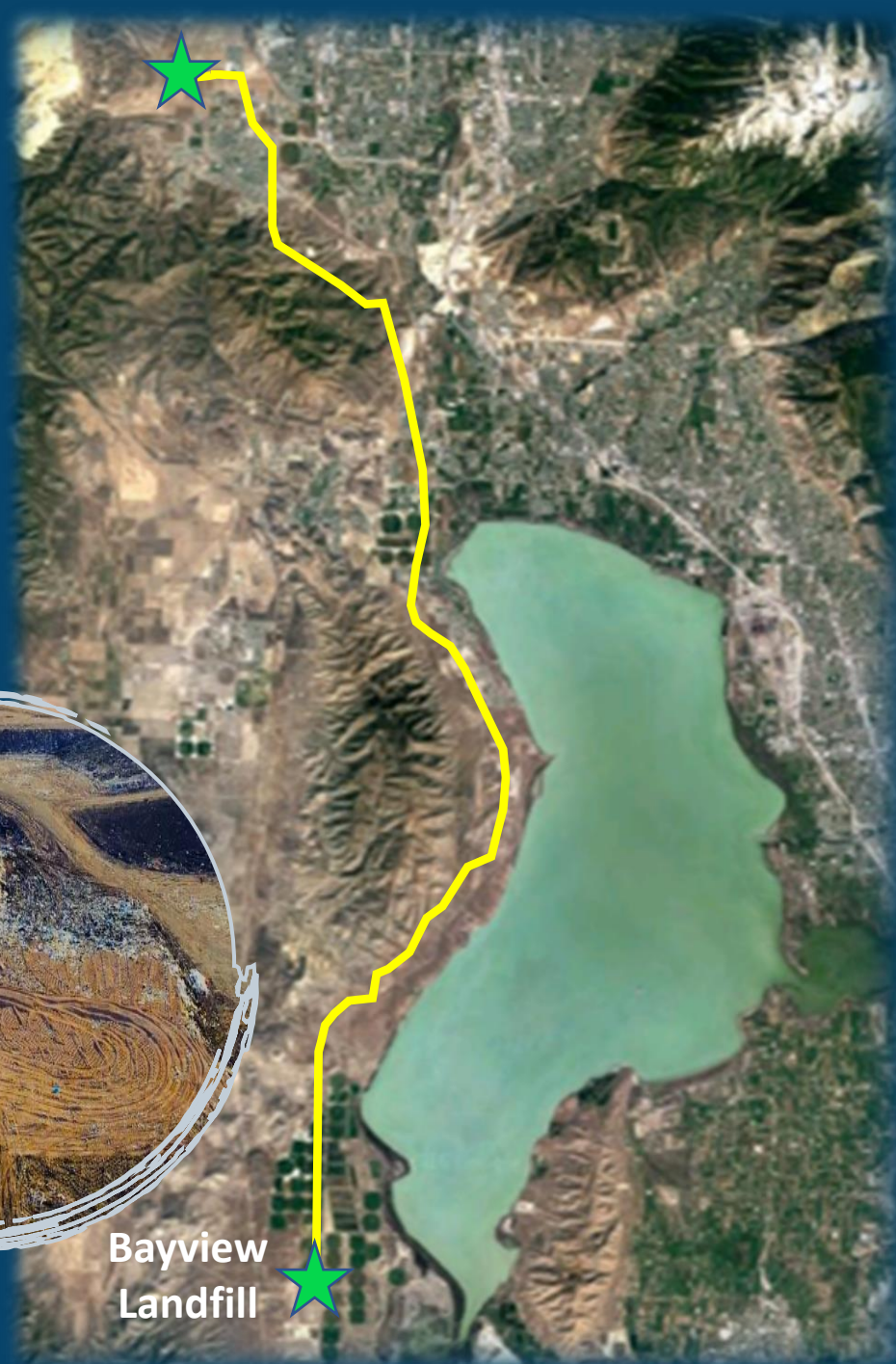


WASATCH
INTEGRATED
waste management district



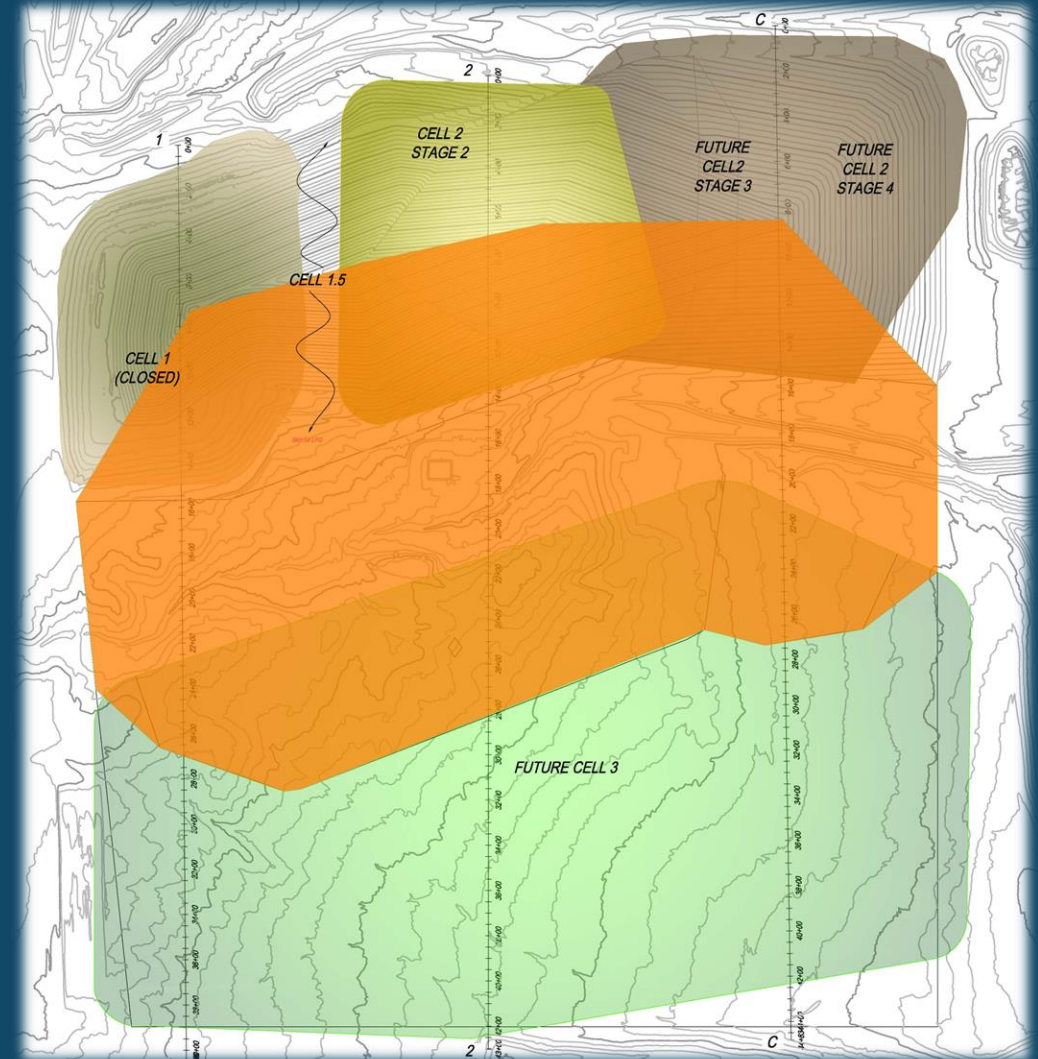
SUV SWD
SOUTH UTAH VALLEY SOLID WASTE DISTRICT

- Located south/west of Utah Lake
- \$10.50 per ton member tipping fee (Lowest in the Nation)



BAYVIEW LANDFILL

- Life expectancy is 60+ years
- Will serve over one million residents (up to 2 million)
 - Currently taking waste from North Pointe & South Utah Valley
- Actively involved in Bayview Operations





BAYVIEW RENEWABLE NATURAL GAS SYSTEM

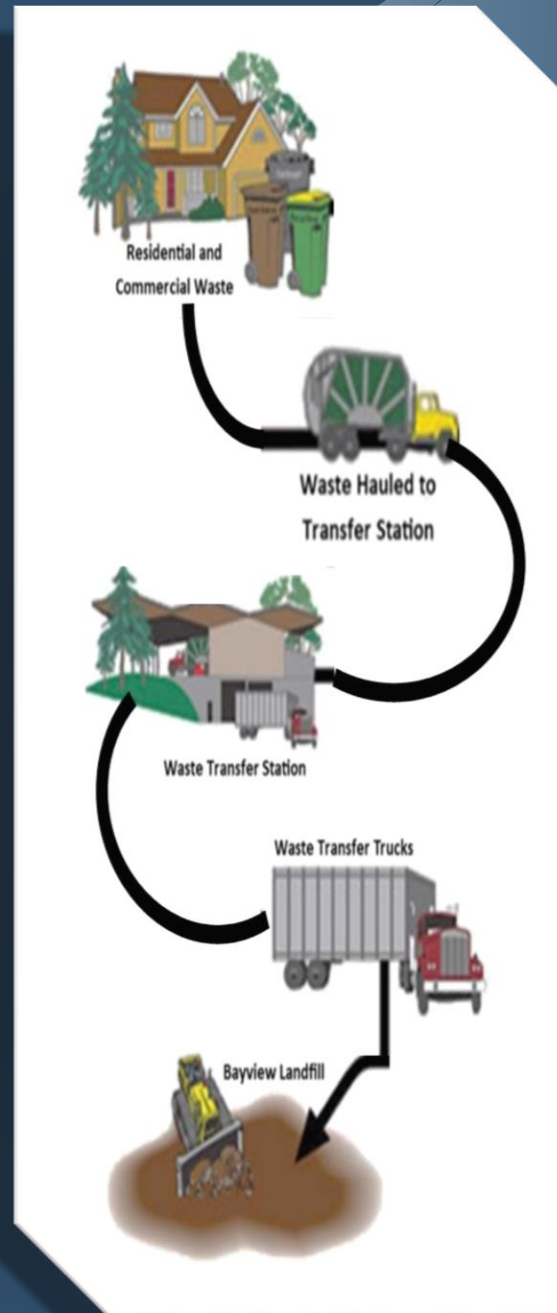
- Bayview landfill gas collection system (LCGS) has been installed
- Landfill Gas will be converted to Renewable Natural Gas (RNG)
- Bayview partner, Pinecreek LLC, is in process of building RNG Plant

SANDY TRANSFER STATION

Forecasted
Opening 2025

Primarily East Side
of Service Area

- Murray
- Midvale
- Sandy
- Draper



SOUTH JORDAN TRANSFER STATION

Forecasted
Opening 2032

Primarily West Side
of Service Area

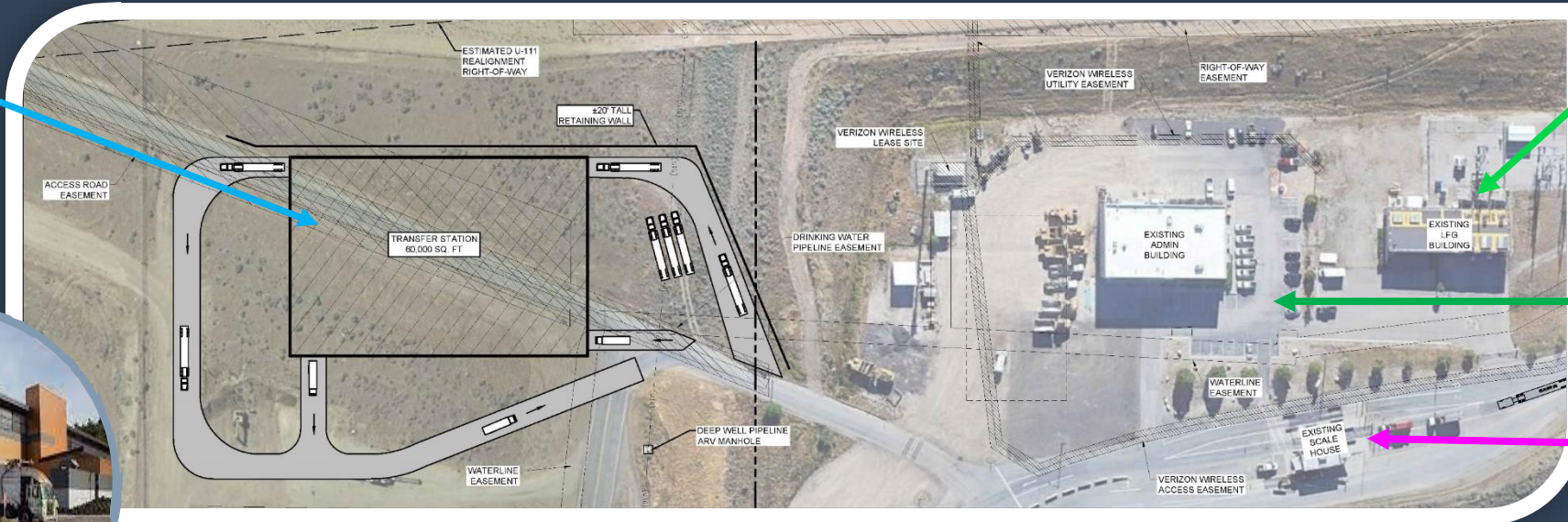
- West Jordan
- South Jordan
- Riverton
- Herriman

Not a member city but their waste is brought to Trans-Jordan at full gate rate

SOUTH JORDAN TRANSFER STATION

Forecasted Opening 2032

Transfer Station



Landfill
Gas-to-Energy Plant

Operations Building

Scale house



Current site will incorporate a Transfer Station with Residential Drop Off Facility (current PCC area)



PCC will remain open for residential customers

- **Anticipated TS Stats**

- Incoming Tonnage:
200,000 tons per year
- Commercial Inbound Loads:
150 trucks per day
- Transfer Loads (Outbound):
27 Trucks

- **Continued PCC Operations**

- Residential Loads (Saturdays):
400+ vehicles
- Keeps residents primarily out of
Transfer Station
- Household Hazardous Waste Facility
- Residential Recycling Drop-off



SOUTH JORDAN TRANSFER STATION

Forecasted Opening 2032



GREEN WASTE PROGRAM CLOSURE

**Original program
closure date
accelerated due to
catastrophic fire
September 2023**



GREENWASTE PROGRAM CLOSURE

LOSS OF PROPERTY

The land that the green waste is composted has been leased from South Valley Water Reclamation. This land will be sold and also separated from Trans-Jordan with HWY U-111 realignment.

RESIDENTIAL PROXIMITY

Homes are already built within 1/4 mile of the both the grinding and processing areas. Green waste operations in a populated area causes issues with safety (i.e. fires), vectors, and other nuisances.

NO VIABLE ALTERNATIVE

Trans-Jordan looked into several alternatives to continue the green waste program which did not result in any viable options.

GREEN WASTE BENEFICIAL USE

Trans-Jordan operates not only a landfill, but in essence an anerobic digester

Green-Waste in the landfill creates more methane which benefits the Landfill Gas To Energy Program

Additional benefits from the reduction of carbon footprint from collection and processing of Green-Waste

Greenhouse gases produced from decomposing GW will be contained and destroyed through the landfill gas collection system

LANDFILL GAS TO ENERGY PARTNERSHIP



- Transforming Landfill Gas into Usable Energy
- Partnership with EDL and Murray
- Generates 5 Mega Watts of power
- Power for 5,000 homes
- Working on adding another engine to produce more power
- Additional revenue source for Trans-Jordan

ZIPLINE PARTNERSHIP

- Zipline is a new medical delivery supply service supplier that delivers products via fixed-wing drone
- Contracted with IHC to deliver RX and Medical Supplies to patients in Salt Lake and Utah Counties
- Launch site is located on top of one of the closed landfill cells
- Flights began October 2022



RECYCLING UPDATES

HOUSE BILL 107 – DOUGLAS WELTON

RECYCLING FACILITY TRANSPARENCY AMENDMENTS

- Requires a recyclable material hauler to report data to political subdivisions about the amount of recycling material collected;
- Requires a recycling facility to submit an annual report on the amount of recycling material collected to the division of waste management and radiation control;
- Requires a political subdivision to publish the recycling data; and makes technical changes.



EDUCATION OUTREACH

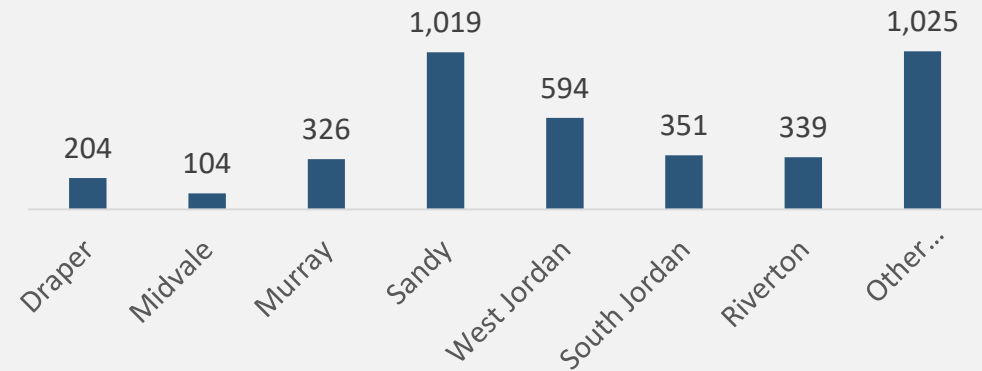
Sandy City Education Outreach 2023

- Trans Jordan presented to 12 out of the 14 third grade elementary schools.
- 1,019 Sandy City students received education from Trans-Jordan.

Education Outreach in 2023

- 62 Total Tours & Presentations
 - 34 Tours of the Landfill
 - 28 Presentations at schools
- 3,962 Number of Students Reached through education program

Number Of Students Reached By City
Total 3,962



Co-Mingle
Recycling

Plastic Bottles and
Metal / Aluminum Can
Corrugated Cardboard



No plastic bags or plastic film. No bagged recyclables.

Please place all paper in the paper bin.

Trans-Jordan offers free
tours and presentations

Jill Fletcher

Community Education & Outreach Coordinator

jillfletcher@transjordan.org

801-256-2824



Jaren Scott

Executive Director

jarenscott@transjordan.org

801-256-2812