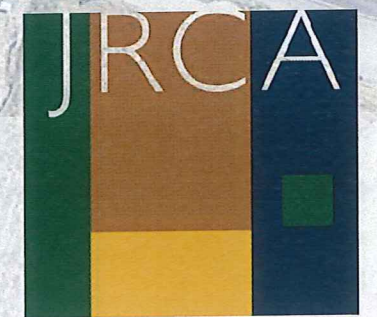
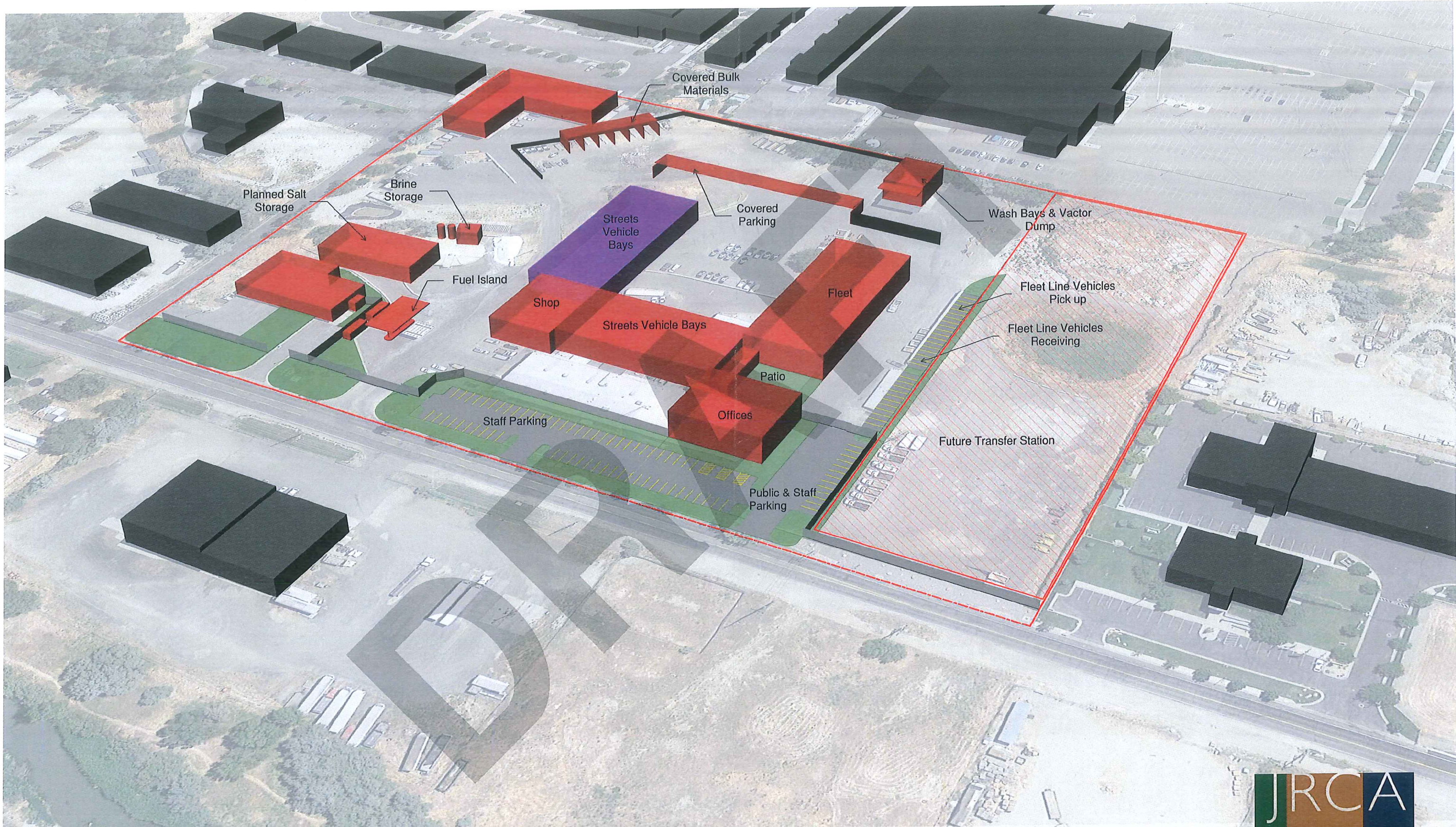


Sandy City Public Works - Existing

30 May 2017

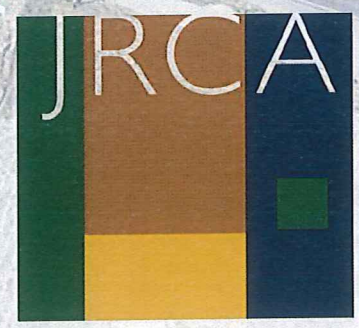


ARCHITECTS



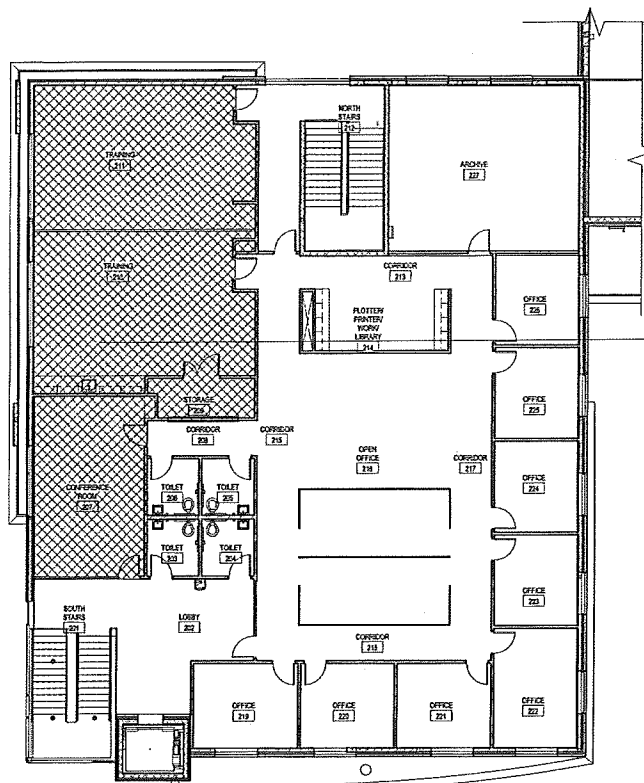
Sandy City Public Works - Phase IV

30 May 2017

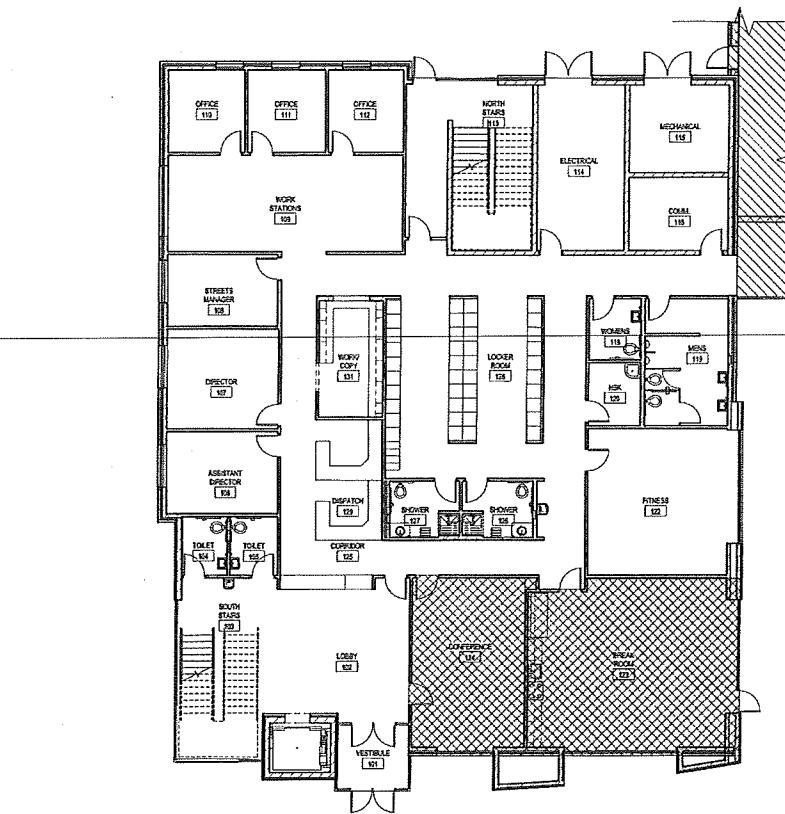


ARCHITECTS

C:\Users\jrcad\Documents\17007 - Sandy Public Works_v18 - jrcad\BTRN-v1



A8 AREA 'A' UPPER LEVEL CODE ANALYSIS
SCALE 1/8" = 1'-0"



A3 AREA 'A' MAIN LEVEL CODE ANALYSIS
SCALE 1/8" = 1'-0"

AREA 'A' OCCUPANT LOAD SCHEDULE					
ROOM NAME	ROOM #	AREA	OCC. TYPE	AREA FACTOR	OCC. LOAD
VESTIBULE	101	58 SF	B		
LOBBY	102	270 SF	B	155	17
SOUTH STAIRS	103	240 SF	B		
TOILET	104	40 SF	B		
TOILET	105	40 SF	B		
ASSISTANT DIRECTOR	107	224 SF	B	100	1.8
DIRECTOR	108	224 SF	B	100	2.2
STREETS MANAGER	109	450 SF	B	300	6.5
WORK STATIONS	110	427 SF	B	300	1.3
OFFICE	111	127 SF	B	100	1.3
OFFICE	112	127 SF	B	100	1.2
NORTH STAIRS	113	240 SF	B		
ELECTRICAL	114	280 SF	B	300	1.8
MECHANICAL	115	120 SF	B	300	0.5
COAL	116	140 SF	B	300	0.5
CORRIDOR	117	304 SF	B		
WOMENS	118	40 SF	B		
MENS	119	220 SF	B		
TOILET	120	40 SF	B	300	0.2
CORRIDOR	121	220 SF	B		
FITNESS	122	420 SF	B	30	8.2
BREAK ROOM	123	850 SF	A-3	15	42.8
CONFERENCE	124	360 SF	A-3	15	26.5
CORRIDOR	125	240 SF	B		
SHOWER	126	70 SF	B		
SHOWER	127	70 SF	B		
LOCKER ROOM	128	180 SF	B	100	8.8
DISPATCH	129	420 SF	B	200	1.8

AREA 'A' OCCUPANT LOAD SCHEDULE					
ROOM NAME	ROOM #	AREA	OCC. TYPE	AREA FACTOR	OCC. LOAD
CORRIDOR	130	171 SF	B		
WORK COPY	131	140 SF	B	100	1.8
SOUTH STAIRS	132	220 SF	B		
LOBBY	133	300 SF	B	100	1.9
TOILET	134	40 SF	B		
TOILET	135	40 SF	B		
TOILET	136	40 SF	B		
TOILET	137	40 SF	B		
CONFERENCE ROOM	138	420 SF	A-3	15	26.5
CORRIDOR	139	70 SF	B		
STORAGE	140	70 SF	A-3	300	0.3
TRAINING	141	877 SF	A-3	15	46.1
TRAINING	142	860 SF	A-3	15	44.2
NORTH STAIRS	143	424 SF	B		
CORRIDOR	144	174 SF	B		
PLUTTER PRINTER ROOM/LIBRARY	145	144 SF	B	100	1.8
CORRIDOR	146	311 SF	B		
OPEN OFFICE	147	250 SF	B	100	0.3
CORRIDOR	148	211 SF	B		
CORRIDOR	149	108 SF	B		
OFFICE	150	108 SF	B	100	1.8
OFFICE	151	108 SF	B	100	1.8
OFFICE	152	108 SF	B	100	1.8
OFFICE	153	108 SF	B	100	1.8
OFFICE	154	108 SF	B	100	1.8
OFFICE	155	108 SF	B	100	1.8
OFFICE	156	108 SF	B	100	1.8
OFFICE	157	108 SF	B	100	1.8
OFFICE	158	108 SF	B	100	1.8
OFFICE	159	108 SF	B	100	1.8
OFFICE	160	108 SF	B	100	1.8
OFFICE	161	108 SF	B	100	1.8
OFFICE	162	108 SF	B	100	1.8
OFFICE	163	108 SF	B	100	1.8
OFFICE	164	108 SF	B	100	1.8
OFFICE	165	108 SF	B	100	1.8
OFFICE	166	108 SF	B	100	1.8
OFFICE	167	108 SF	B	100	1.8
OFFICE	168	108 SF	B	100	1.8
OFFICE	169	108 SF	B	100	1.8
OFFICE	170	108 SF	B	100	1.8
OFFICE	171	108 SF	B	100	1.8
OFFICE	172	108 SF	B	100	1.8
OFFICE	173	108 SF	B	100	1.8
OFFICE	174	108 SF	B	100	1.8
OFFICE	175	108 SF	B	100	1.8
OFFICE	176	108 SF	B	100	1.8
OFFICE	177	108 SF	B	100	1.8
OFFICE	178	108 SF	B	100	1.8
OFFICE	179	108 SF	B	100	1.8
OFFICE	180	108 SF	B	100	1.8
OFFICE	181	108 SF	B	100	1.8
OFFICE	182	108 SF	B	100	1.8
OFFICE	183	108 SF	B	100	1.8
OFFICE	184	108 SF	B	100	1.8
OFFICE	185	108 SF	B	100	1.8
OFFICE	186	108 SF	B	100	1.8
OFFICE	187	108 SF	B	100	1.8
OFFICE	188	108 SF	B	100	1.8
OFFICE	189	108 SF	B	100	1.8
OFFICE	190	108 SF	B	100	1.8
OFFICE	191	108 SF	B	100	1.8
OFFICE	192	108 SF	B	100	1.8
OFFICE	193	108 SF	B	100	1.8
OFFICE	194	108 SF	B	100	1.8
OFFICE	195	108 SF	B	100	1.8
OFFICE	196	108 SF	B	100	1.8
OFFICE	197	108 SF	B	100	1.8
OFFICE	198	108 SF	B	100	1.8
OFFICE	199	108 SF	B	100	1.8
OFFICE	200	108 SF	B	100	1.8
OFFICE	201	108 SF	B	100	1.8
OFFICE	202	108 SF	B	100	1.8
OFFICE	203	108 SF	B	100	1.8
OFFICE	204	108 SF	B	100	1.8
OFFICE	205	108 SF	B	100	1.8
OFFICE	206	108 SF	B	100	1.8
OFFICE	207	108 SF	B	100	1.8
OFFICE	208	108 SF	B	100	1.8
OFFICE	209	108 SF	B	100	1.8
OFFICE	210	108 SF	B	100	1.8
OFFICE	211	108 SF	B	100	1.8
OFFICE	212	108 SF	B	100	1.8
OFFICE	213	108 SF	B	100	1.8
OFFICE	214	108 SF	B	100	1.8
OFFICE	215	108 SF	B	100	1.8
OFFICE	216	108 SF	B	100	1.8
OFFICE	217	108 SF	B	100	1.8
OFFICE	218	108 SF	B	100	1.8
OFFICE	219	108 SF	B	100	1.8
OFFICE	220	108 SF	B	100	1.8
OFFICE	221	108 SF	B	100	1.8
OFFICE	222	108 SF	B	100	1.8
OFFICE	223	108 SF	B	100	1.8
OFFICE	224	108 SF	B	100	1.8
OFFICE	225	108 SF	B	100	1.8
OFFICE	226	108 SF	B	100	1.8
OFFICE	227	108 SF	B	100	1.8
OFFICE	228	108 SF	B	100	1.8
OFFICE	229	108 SF	B	100	1.8
OFFICE	230	108 SF	B	100	1.8
OFFICE	231	108 SF	B	100	1.8
OFFICE	232	108 SF	B	100	1.8
OFFICE	233	108 SF	B	100	1.8
OFFICE	234	108 SF	B	100	1.8
OFFICE	235	108 SF	B	100	1.8
OFFICE	236	108 SF	B	100	1.8
OFFICE	237	108 SF	B	100	1.8
OFFICE	238	108 SF	B	100	1.8
OFFICE	239	108 SF	B	100	1.8
OFFICE	240	108 SF	B	100	1.8
OFFICE	241	108 SF	B	100	1.8
OFFICE	242	108 SF	B	100	1.8
OFFICE	243	108 SF	B	100	1.8
OFFICE	244	108 SF	B	100	1.8
OFFICE	245	108 SF	B	100	1.8
OFFICE	246	108 SF	B	100	1.8
OFFICE	247	108 SF	B	100	1.8
OFFICE	248	108 SF	B	100	1.8
OFFICE	249	108 SF	B	100	1.8
OFFICE	250	108 SF	B	100	1.8
OFFICE	251	108 SF	B	100	1.8
OFFICE	252	108 SF	B	100	1.8
OFFICE	253	108 SF	B	100	1.8
OFFICE	254	108 SF	B	100	1.8
OFFICE	255	108 SF	B	100	1.8
OFFICE	256	108 SF	B	100	1.8
OFFICE	257	108 SF	B	100	1.8
OFFICE	258	108 SF	B	100	1.8
OFFICE	259	108 SF	B	100	1.8
OFFICE	260	108 SF	B	100	1.8
OFFICE	261	108 SF	B	100	1.8
OFFICE	262	108 SF	B	100	1.8
OFFICE	263	108 SF	B	100	1.8
OFFICE	264	108 SF	B	100	1.8
OFFICE	265	108 SF	B	100	1.8
OFFICE	266	108 SF	B	100	1.8
OFFICE	267	108 SF	B	100	1.8
OFFICE	268	108 SF	B	100	1.8
OFFICE	269	108 SF	B	100	1.8
OFFICE	270	108 SF	B	100	1.8
OFFICE	271	108 SF	B	100	1.8
OFFICE	272	108 SF	B	100	1.8
OFFICE	273	108 SF	B	100	1.8
OFFICE	274	108 SF	B	100	1.8
OFFICE	275	108 SF	B	100	1.8
OFFICE	276	108 SF	B	100	1.8
OFFICE	277	108 SF	B	100	1.8
OFFICE	278	108 SF	B	100	1.8
OFFICE	279	108 SF	B	100	1.8
OFFICE	280	108 SF	B	100	1.8
OFFICE	281	108 SF	B	100	1.8
OFFICE	282	108 SF	B	100	1.8
OFFICE	283	108 SF	B	100	1.8
OFFICE	284	108 SF	B	100	1.8
OFFICE	285	108 SF	B	100	1.8
OFFICE	286	108 SF	B	100	1.8
OFFICE	287	108 SF	B	100	1.8
OFFICE	288	108 SF	B	100	1.8
OFFICE	289	108 SF	B	100	1.8
OFFICE	290	108 SF	B	100	1.8
OFFICE	291	108 SF	B	100	1.8
OFFICE	292	108 SF	B	100	1.8
OFFICE	293	108 SF	B	100	1.8
OFFICE	294	108 SF	B	100	1.8
OFFICE	295	108 SF	B	100	1.8
OFFICE	296	108 SF	B	100	1.8
OFFICE	297	108 SF	B	100	1.8
OFFICE	298	108 SF	B	100	1.8
OFFICE	299	108 SF	B	100	1.8
OFFICE	300	108 SF	B	100	1.8

Chapter 4 - Room Occupancy
Chapter 4.2 - Various Public Occupancies
4.2.1 End-use occupancy groups (M 5-1) occupancies shall comply with the standard.
4.2.2 Ventilation in accordance with IMC.
4.2.3 Automatic sprinkler system in accordance with IMC 903.2.1.1.
4.2.4 Repeat groups (M 5-1) occupancies shall comply with the standard.
4.2.5 Ventilation in accordance with IMC.
4.2.6 Floor surface shall be non-combustible and non-reflective.
4.2.7 Heating equipment in accordance with IMC.
4.2.8 Gas detection system shall comply with IMC 903.2.1.1.
4.2.9 Automatic fire alarm system in accordance with IMC 903.2.1.1.

CODE ANALYSIS
Project: Sandy Public Works
Project Address: 877 S. 200 E.
Municipality/Jurisdiction: Sandy City
Owner: Sandy City
Firm: JRC Architects
Apply Code: 2015 International Building Code (as amended by the State of Utah)
2015 International Energy Conservation Code (as amended by the State of Utah)
2015 International Plumbing Code
2015 International Mechanical Code
2015 International Electrical Code
NFPA 101 (Current Edition)
NFPA 101 (Current Edition)
2015 International Energy Conservation Code

Construction Type Details
IA 1B BA (4) IIA B8 IFA I/8 VA I/8 VA I/8
Construction Group: A-1, A-2, S-1, S-2
Mixed Use (per IMC) (YES) NO

Section 502 - Assembly Seating and Areas
Actual Height of Building as per IMC Table 502.2 F1E1 - 25, STORIES - 2
Allowable Area per Story as per IMC Table 502.2
Type I
1) 30,000
2) 40,000
3) 50,000
4) 60,000
5) 70,000
6) 100,000
Total Allowable Area = 304,000 SF.

Actual Height of Building FEET - 25, STORIES - 2
Actual Building Area with Vertical Area = 14,176 SF.
Total Mechanical Area = 7,238 SF.

Entire building is equipped with automatic fire suppression system Yes
Section 503 - Building Area Restrictions

Occupancy Type A-1
Actual = 283 of (10)
Allowable = 25,000 of (10)
= 24,717 of

Occupancy Type B
Actual = 8,802 of (10)
Allowable = 69,000 of (10)
= 60,198 of

Occupancy Type S-1
Actual = 48,748 of + 1,258 of
Allowable = 52,500 of (10)
= 47,490 of

Occupancy Type S-2
Actual = 12,199 of
Allowable = 70,000 of (10)
= 57,801 of

Non-Separated Occupancies as per IMC 503.4 (b) (1) (b) (2) (b) (3) (b) (4) (b) (5) (b) (6) (b) (7) (b) (8) (b) (9) (b) (10) (b) (11) (b) (12) (b) (13) (b) (14) (b) (15) (b) (16) (b) (17) (b) (18) (b) (19) (b) (20) (b) (21) (b) (22) (b) (23) (b) (24) (b) (25) (b) (26) (b) (27) (b) (28) (b) (29) (b) (30) (b) (31) (b) (32) (b) (33) (b) (34) (b) (35) (b) (36) (b) (37) (b) (38) (b) (39) (b) (40) (b) (41) (b) (42) (b) (43) (b) (44) (b) (45) (b) (46) (b) (47) (b) (48) (b) (49) (b) (50) (b) (51) (b) (52) (b) (53) (b) (54) (b) (55) (b) (56) (b) (57) (b) (58) (b) (59) (b) (60) (b) (61) (b) (62) (b) (63) (b) (64) (b) (65) (b) (66) (b) (67) (b) (68) (b) (69) (b) (70) (b) (71) (b) (72) (b) (73) (b) (74) (b) (75) (b) (76) (b) (77) (b) (78) (b) (79) (b) (80) (b) (81) (b) (82) (b) (83) (b) (84) (b) (85) (b) (86) (b) (87) (b) (88) (b) (89) (b) (90) (b) (91) (b) (92) (b) (93) (b) (94) (b) (95) (b) (96) (b) (97) (b) (98) (b) (99) (b) (100) (b) (101) (b) (102) (b) (103) (b) (104) (b) (105) (b) (106) (b) (107) (b) (108) (b) (109) (b) (110) (b) (111) (b) (112) (b) (113) (b) (114) (b) (115) (b) (116) (b) (117) (b) (118) (b) (119) (b) (120) (b) (121) (b) (122) (b) (123) (b) (124) (b) (125) (b) (126) (b) (127) (b) (128) (b) (129) (b) (130) (b) (131) (b) (132) (b) (133) (b) (134) (b) (1

