

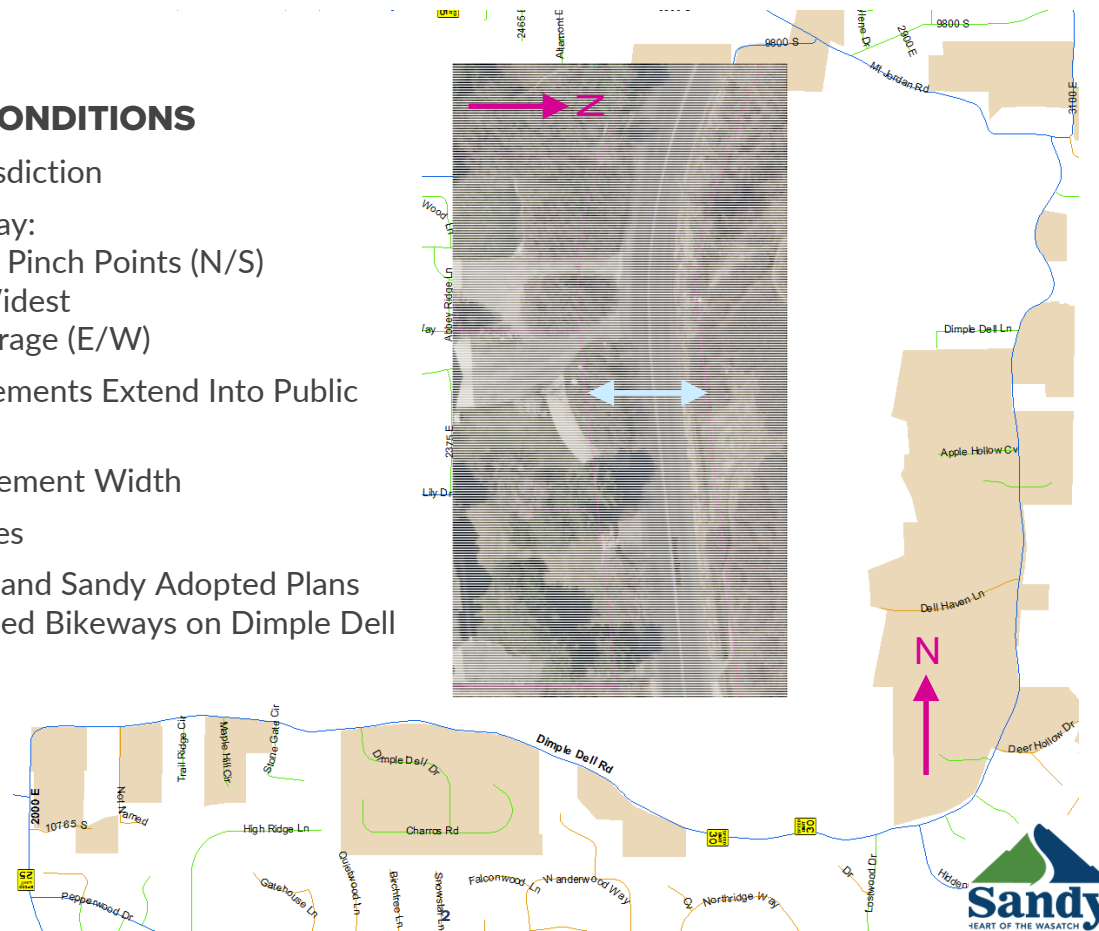


DIMPLE DELL: A HISTORY

EXISTING CONDITIONS

EXISTING CONDITIONS

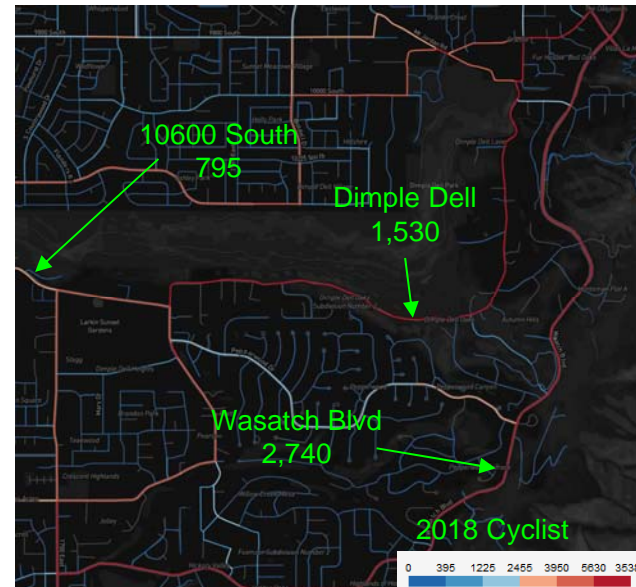
- Shared Jurisdiction
- Right-of-Way:
 - 30'-35' Pinch Points (N/S)
 - ~78' Widest
 - 66' Average (E/W)
- Lot Improvements Extend Into Public ROW
- 20'-25' Pavement Width
- Steep Grades
- Both SLCO and Sandy Adopted Plans Show Planned Bikeways on Dimple Dell



EXISTING CONDITIONS

STRAVA

- Popular GPS Activity Tracker App
- UDOT Purchases Data, Shares Freely
- One of the Most Used Roads for Physical Activity
- 2018: 1,530 Cycling Trips



DOT Basemap (cyclists only):

http://metro-static.strava.com/dataView/UTAH/936_rollup_201801_201812/ride/#5.55/39.511/-111.535

OSM (+trails, sidewalks, etc):

http://metro-static.strava.com/dataView/UTAH/937_rollup_201801_201812/ride/#5.5/39.518/-111.497

EXISTING CONDITIONS

ACCIDENT HISTORY

- 10 since end of 2013
 - 1.67 per year
- Very Low Accident Rate
 - 0.57 Accidents per Million Vehicle Miles Driven

Road Segment Crash Rate Per Million Miles Driven



0.57 = Very Low

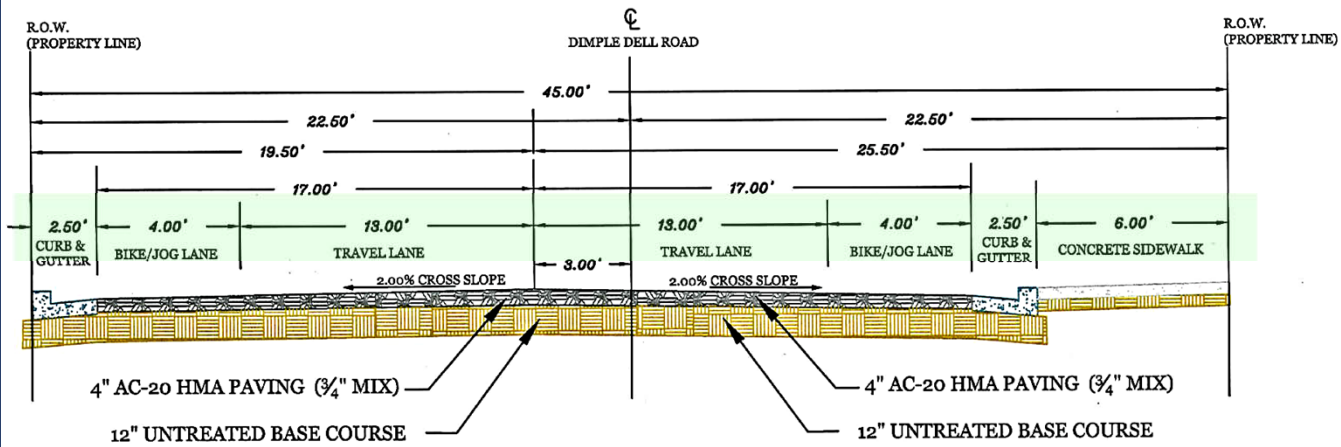
TRAFFIC CALMING

- E/W Speed Limit: 30 mph
- N/S Speed Limit: 25 mph
- November, 2018
 - 2700 E (30 mph)
 - Average Speed: 35 mph
 - 85th Percentile Speed: 40 mph
- Summer 2019: Driver Feedback Signs
- August, 2020
 - Same Spot
 - Average Speed: 30 mph
 - 85th Percentile Speed: 36 mph
- Fact Brief:
 - <https://sandy.utah.gov/970/Fact-Briefs>



45' ESTABLISHED ROW

2014 FEHR & PEERS STUDY



45' Right of Way
34' Pavement Width
Sidewalk on One Side

ROW COMPARISON

Right-of-Way Comparison

- Fehr & Peers: 45'
- Local: 52'
- Minor Collector: 64'
- Dimple Dell is Classified as a Minor Collector

45'
Dimple Dell

52'
Local

64'
Minor Collector

Reminder: Existing ROW is between 35' at a few pinch points, to 78' maximum, or 66' on average.

COMMITTEES AND MEETINGS

AUG. 2018 - SLCO CHIP SEAL

- Sandy Bike Task Force Requested “Sharrows” (Shared Use Lane Markings)
- SLCO Traffic Dept. Averse to Improvements Because of Past Public Opposition Experiences
- Further Discussions Escalated on SLCO’s End to Director’s Level
- After Months of Internal SLCO Discussions, Followed by a SLCO/Sandy Meeting....
- Dimple Dell Task Force Formed January 2019

2019 DIMPLE DELL TASK FORCE

- Chair: Matt Huish
- Members: Sandy City, SLCO, and Granite Area Residents
- Main Goal: Set Short/Long Term Project Phasing
- Recognized Other Needs:
 - Public Input
 - Drainage
 - Maintain Rural Feel
 - Traffic Calming Designs

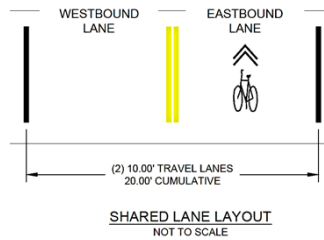


This is a Sharrow

DIMPLE DELL TASK FORCE

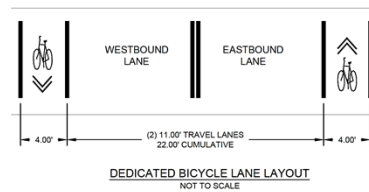
OPTION 1

- Paint Sharrows
- No ROW needed
- No Widening
- \$1M – Mill, Overlay, Restripe



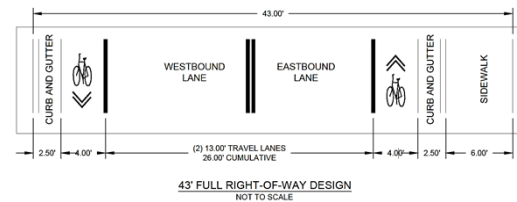
OPTION 2

- 4' Bike Lane Both Sides
- 2-11' Lanes
- Minimal ROW needed
- \$8-\$12M – Widening, Pavement, Grading, Some Drainage



OPTION 3

- 45' Cross Section
- Some Strip Takes Needed
- \$18M – Widening, Pavement, Drainage, Sidewalk, Grading

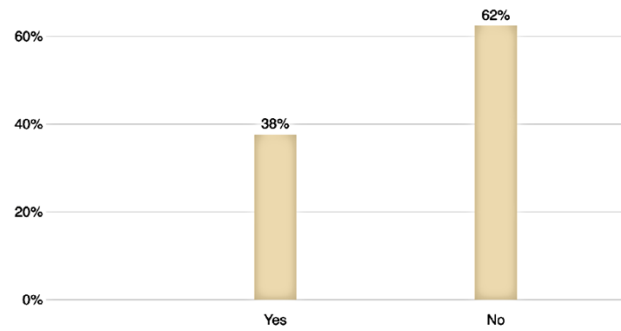


Reminder: Existing ROW is 35'-78', or 66' on average.

PUBLIC INPUT

- December 2019
- 766 Responses
- Questions:
 - Location of Home
 - How/When You use Dimple Dell
 - If Comfortable Using, Why
 - Signage (More/Less/Same)
 - Maintain Character

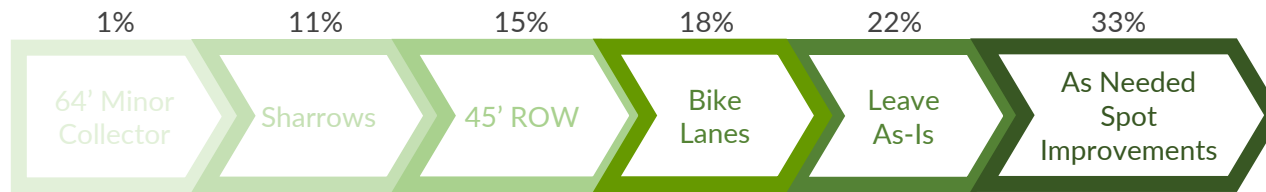
Do you feel comfortable using this road to run, walk or bike?



57% of Respondents Ranked Most Uncomfortable



DIMPLE DELL TASK FORCE



PUBLIC INPUT

1. **Spot Imp.'s:** Widen at Narrow Spots, Clear Sight Issues, Dampen Sharper Curves, etc. - \$TBD
2. **Do Nothing**
3. **DD Committee Option 2:** Two 11' Lanes, 4' Bike Lanes - \$15M
4. **45' Fehr & Peers:** Two 13' Lanes, 4' Bike Lanes, Curb, 6' Sidewalk on One Side - \$18M
5. **Sharrows:** Mill, Overlay, Restripe - \$1M
6. **64' Minor Collector:** Three 11' Lanes, 3' Shoulders, Curb, 5' Parkstrip, 5' Sidewalk - \$40M+

Most Preferred Changes



This is a Sharrow

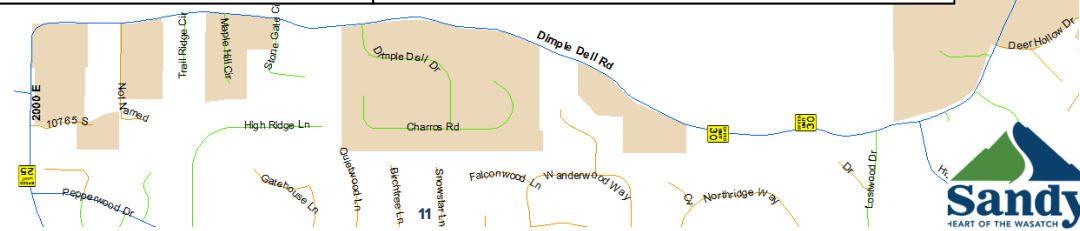
FUTURE

DIMPLE DELL TASK FORCE

- Last Meeting: December 2019
- Sandy Laid Out Sharrow Location Plan
 - Least Expensive
 - No Widening
- SLCO Expressed Opposition to Sharrows
- No Action Taken
- Task Force Concluded

FUTURE

- Add Spot Improvements via. Development
- Drainage Improvements as Needed
- Consider Phasing and Budgeting for Capital Projects
- Continue to Receive Requests for Improvements/Safety



QUESTIONS?

Easily Connect with Sandy City



Download the app to report city issues (like graffiti), to receive emergency notifications, and to access city/event info on Google or Apple devices. Search “Sandy City: CityServe” in the app store.



The perfect site if you only have a few minutes for quick city updates. This dashboard features latest events, monthly newsletter, latest news, videos, fact briefs, and more.



Get email notifications on all the things you are interested in at the city.

Sign up here: sandy.utah.gov/services/enotification



Tune into City Council and Planning Commission meetings.

Go to: sandyutah.legistar.com/Calendar.aspx, then click on the video media link.



Please sign up and provide feedback on Sandy City’s online survey tool.

Search “Citizen Connect” at sandy.utah.gov



FOLLOW US ON SOCIAL:
[@SandyCityUtah](https://www.instagram.com/SandyCityUtah)

