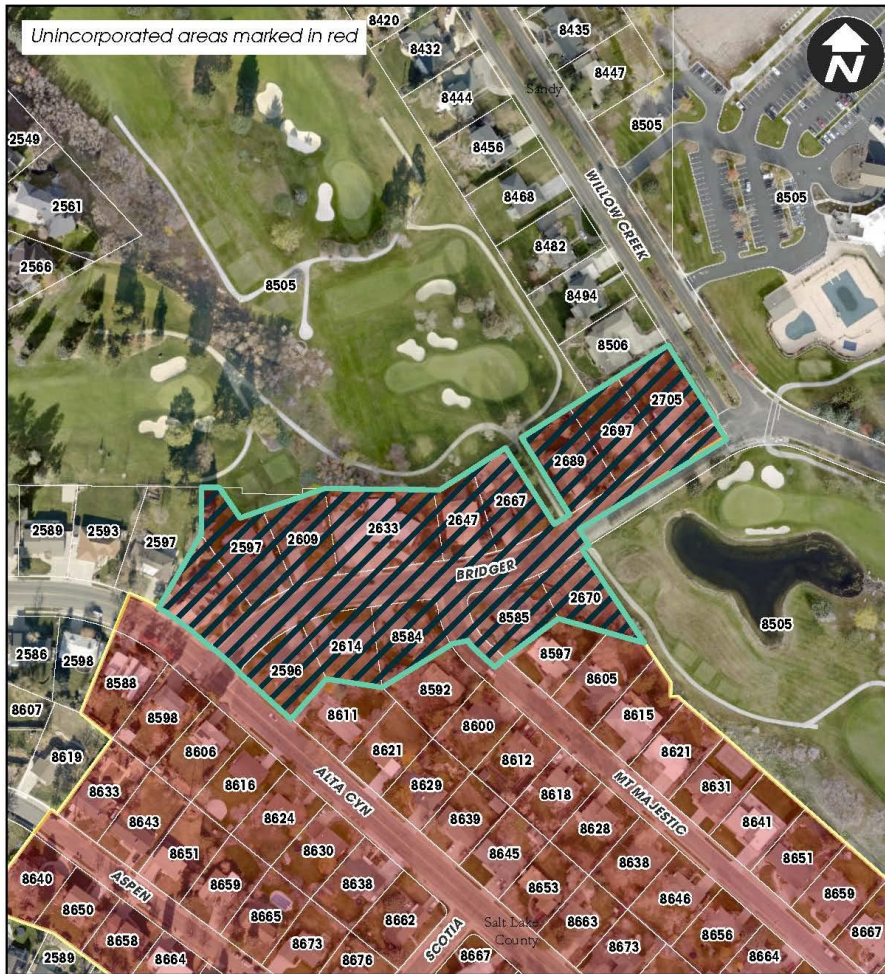


Annexation



Bridger Blvd Annexation

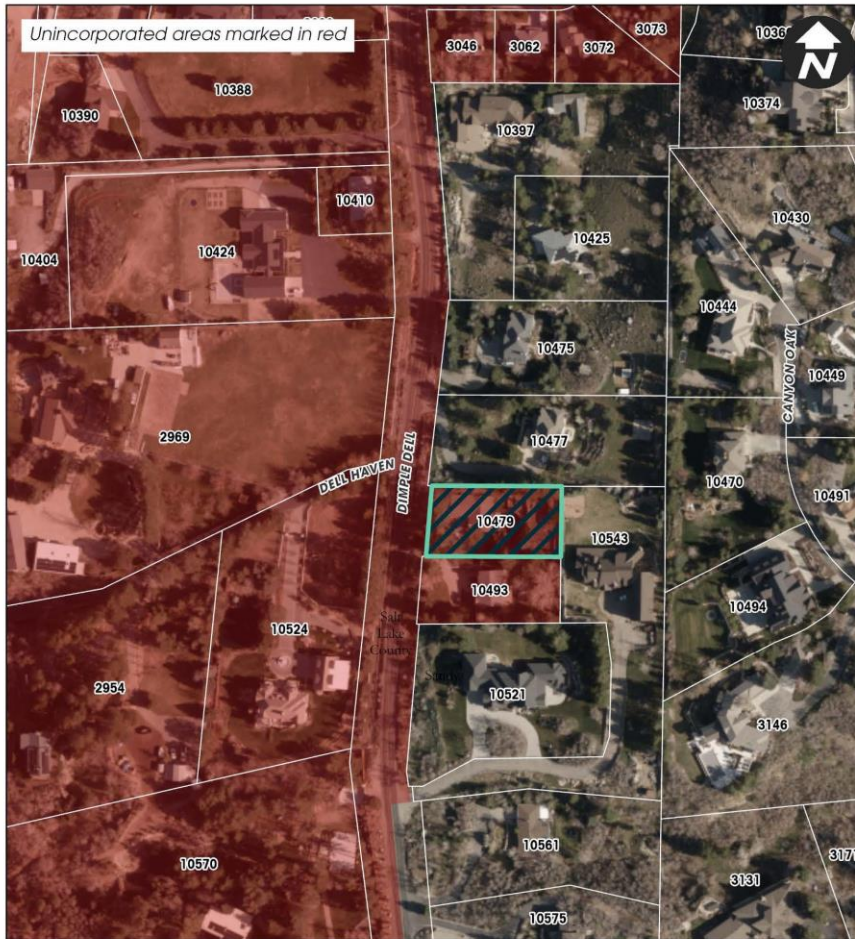
 Subject Property



- Bridger Boulevard Annexation R-1-10 Zone
- Along Bridger Boulevard between Alta Canyon Drive & Willow Creek [Community #18]
- Request: To annex approximately 5.69 acres, located along Bridger Boulevard between Alta Canyon Drive and Willow Creek Drive.
- PC reviewed this request on November 7, 2024. They are forwarding a positive recommendation on the annexation and the zone.



Annexation



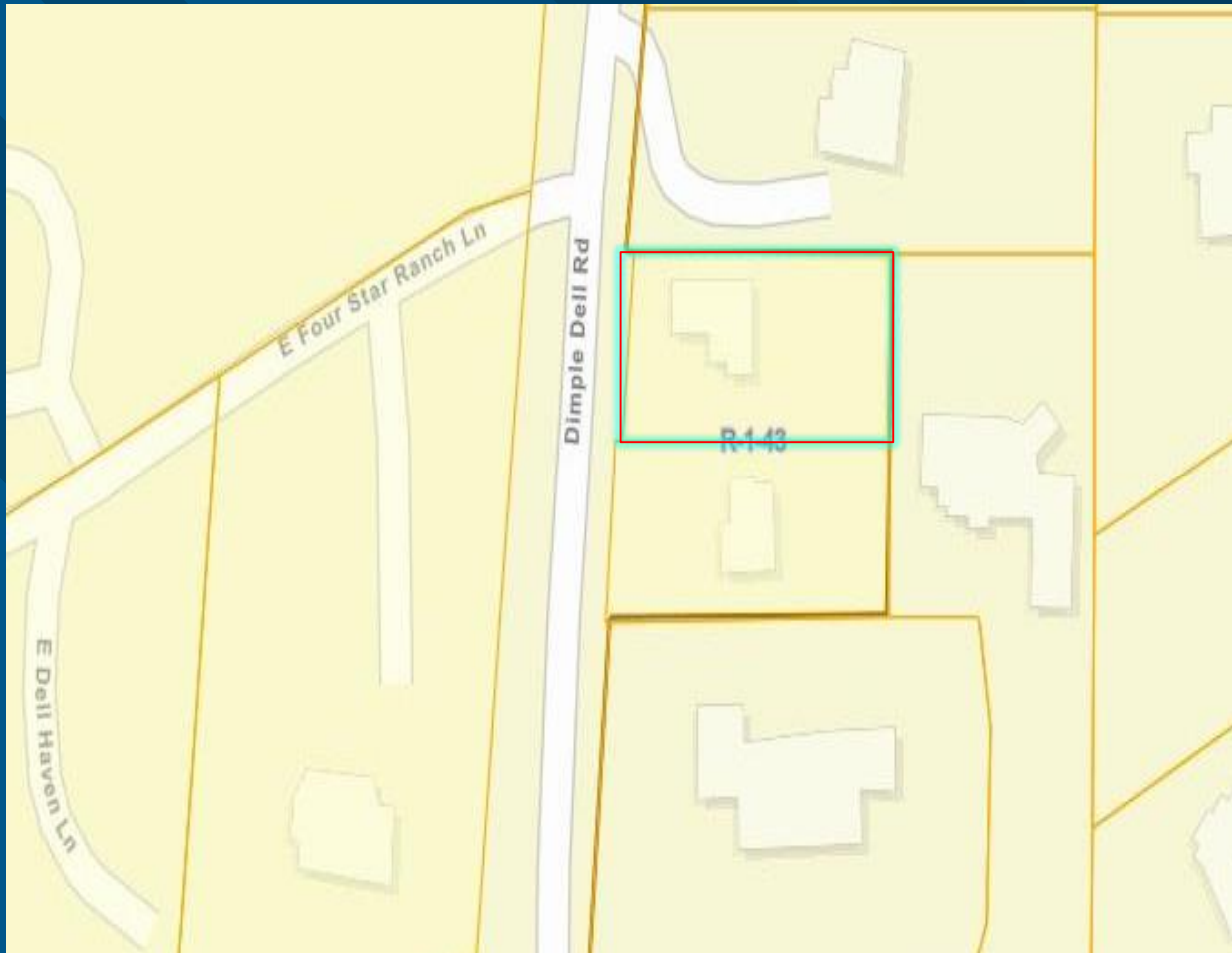
- Herzberg Annexation R-1-20 Zone
- 10479 S Dimple Dell Road [Community #29]
- Request: To annex approximately 0.49 acres, located at 10479 S Dimple Dell Road.
- PC reviewed this request on November 7, 2024. They are forwarding a positive recommendation on the annexation and the zone.



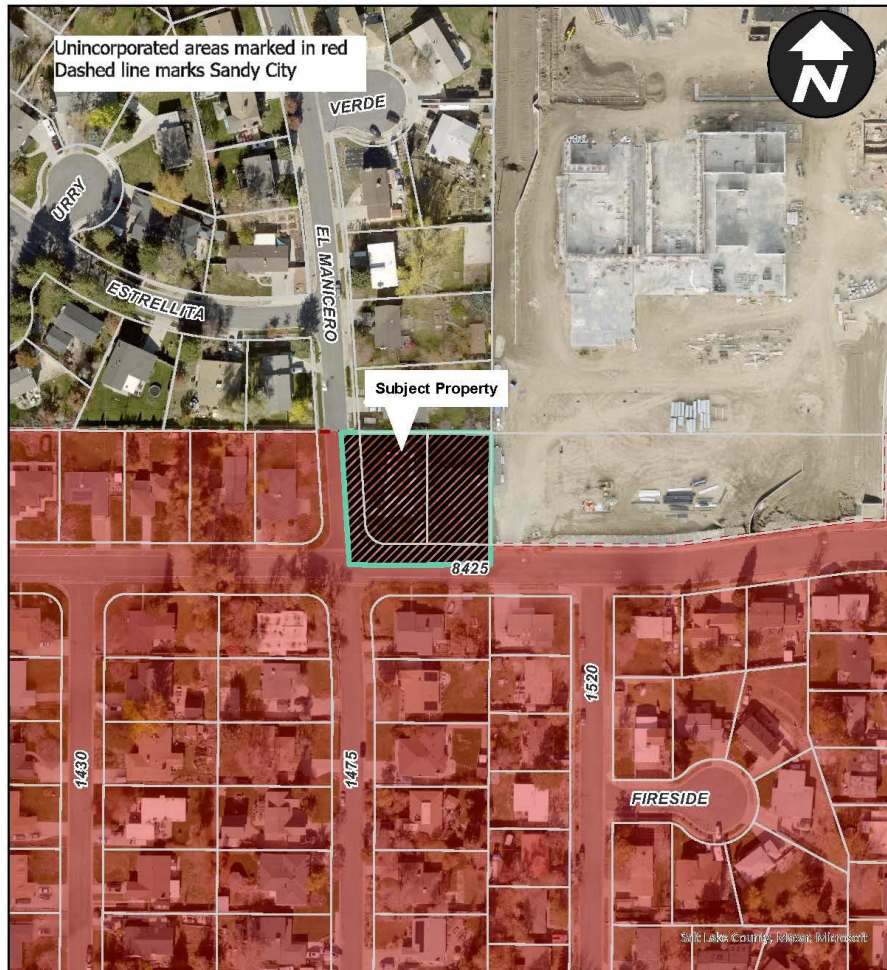
Herzberg Annexation
10479 S Dimple Dell

 **Subject Property**





Annexation



0 37.5 75 150 225 Feet

*Wells/Tarassov
Proposed Annexation*

Community Development Department

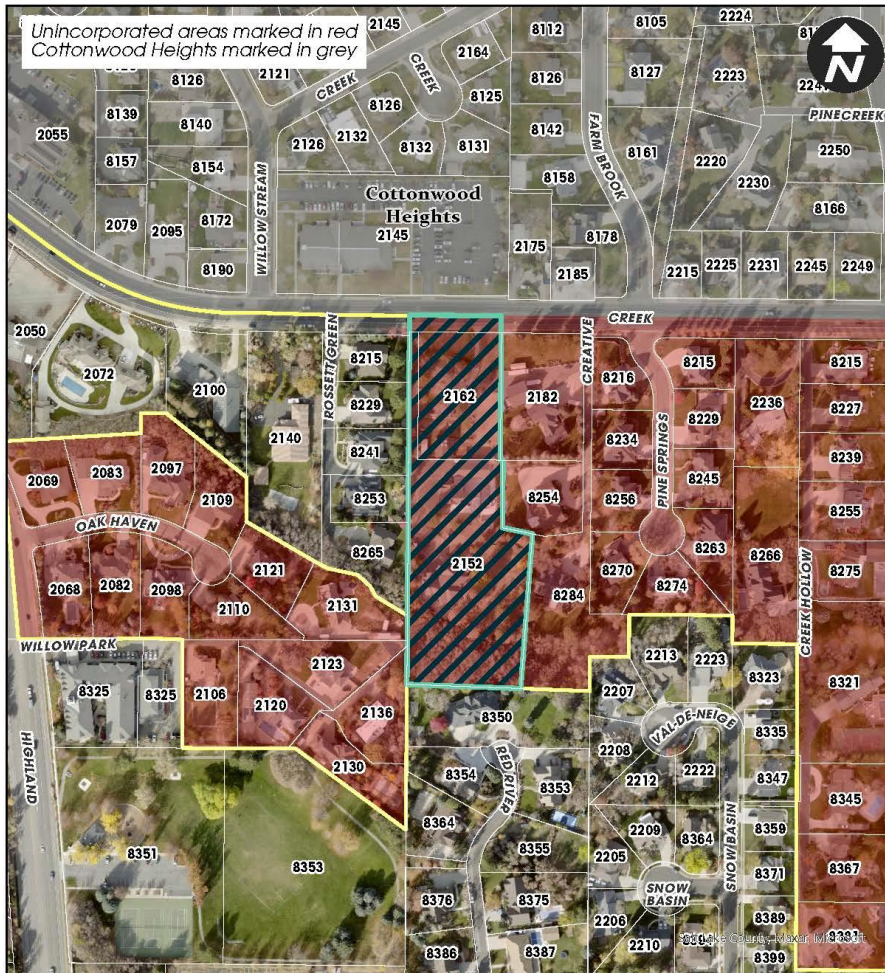
- Wells/Tarassov Annexation
R-1-10 Zone
- 8411 S 1475 E and 1491 E 8425 S
[Community #15]
- Request: To annex approximately
0.64 acres, located at 8411 S 1475
E and 1491 E 8425 S.
- PC reviewed this request on
November 7, 2024. They are
forwarding a positive
recommendation on the
annexation and the zone.

City Council





Annexation



- Cummings Annexation R-1-20 and R-1-40 Zones
- 2152 E and 2162 E Creek Road [Community #18]
- Request: To annex approximately 3.64 acres, located at 2152 E and 2162 E Creek Road.
- PC reviewed this request on November 7, 2024. They are forwarding a positive recommendation on the annexation and the zone.



Cummings Annexation
2152 E Creek Road
2162 E Creek Road

 Subject Property



