

## RESOLUTION #25-33C

### KERSHAW ANNEXATION

#### A RESOLUTION INDICATING INTENT TO ANNEX AN UNINCORPORATED AREA, SETTING A HEARING TO CONSIDER SUCH AN ANNEXATION, AND DIRECTING PUBLICATION OF HEARING NOTICE

The City Council of Sandy City, State of Utah, finds and determines as follows:

1. Sandy City ("City") desires to annex parcels of contiguous unincorporated area, totaling approximately 8.85 acres, for homes located along 1350, 1400/1380 East, south of 9400 South (total of 24 properties). The parcels of land are currently in Salt Lake County, Utah, and more specifically shown on the map attached hereto as Appendix "A".

2. The annexation of that portion of an island or peninsula, leaving unincorporated the remainder of that island or peninsula, is in the City's best interests.

NOW THEREFORE, BE IT RESOLVED BY THE CITY COUNCIL OF SANDY CITY  
AS FOLLOWS:

1. Indicate the City Council's intent to annex the area described in Appendix "A".
2. Determine that not annexing the entire unincorporated island or unincorporated peninsula is in the City's best interest.
3. Indicate the City Council's intent to withdraw the area described in Appendix "A" from the municipal services district.
4. Set a public hearing for August 26, 2025, no earlier than 5:15 p.m., to consider the annexation.
5. Direct the City Recorder to publish and send notice of such hearing in accordance with Utah Code.


ADOPTED by the Sandy City Council this 1st day of July, 2025.

Signed by:



0254445272544E1...  
Brooke D'Sousa, Chair  
Sandy City Council

**ATTEST:**

DocuSigned by:  


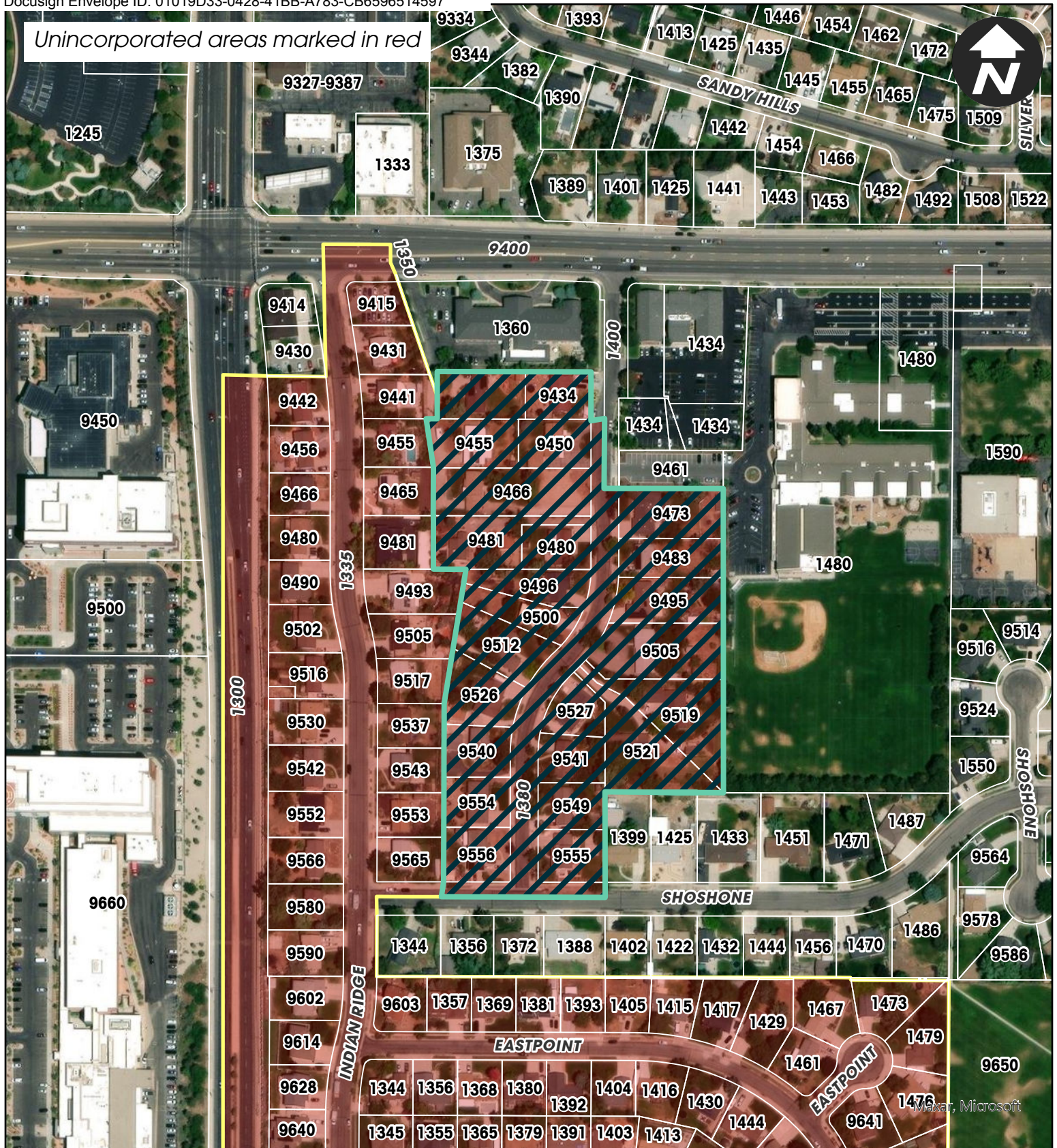
Wendy Downs, MMC  
City Recorder



RECORDED this 2 day of July, 2025.

## **APPENDIX “A”**





Kershaw Annexation  
ANX10022024-006863

 **Subject Property**