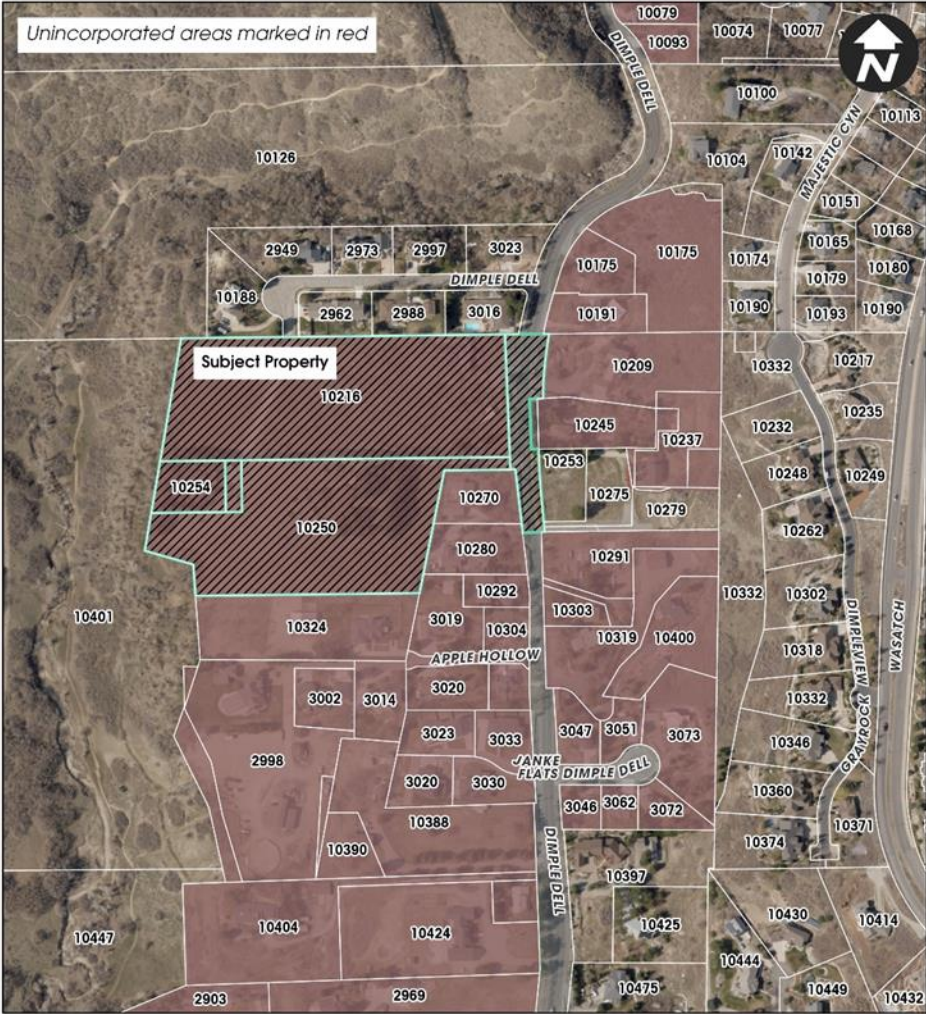


Olsen Farms Annexation

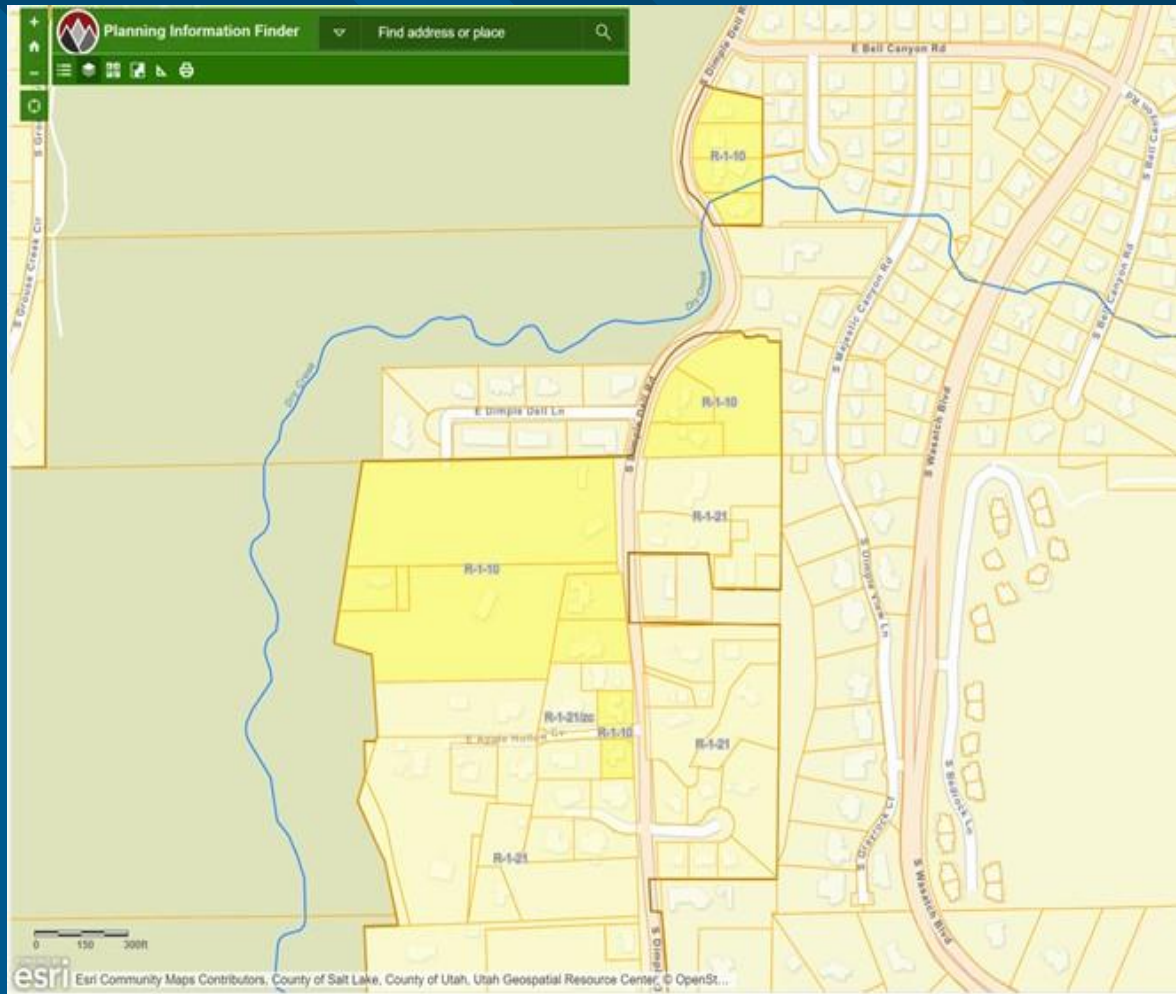
- 10216 S, 10250 S, 10254 S Dimple Dell Road [Community #25]
- File#: ANX08292023-006598
- Request: To annex a certain contiguous unincorporated area, totaling approximately 11.17 acres.



 Subject Property

ANX08292023-006598
Olsen Farms Annexation
10216 S, 10250 S, and 10254 S.
Dimple Dell Road

Olsen Farms Annexation



- Zoning Options:
- R-1-10; or R-1-20A

Planning Commission forwards a positive recommendation to approve the Olsen Farms Annexation with R-1-10 zoning as well as a portion being zoned R-1-20A to be determined through a development agreement with the applicant.

Olsen Farms Annexation

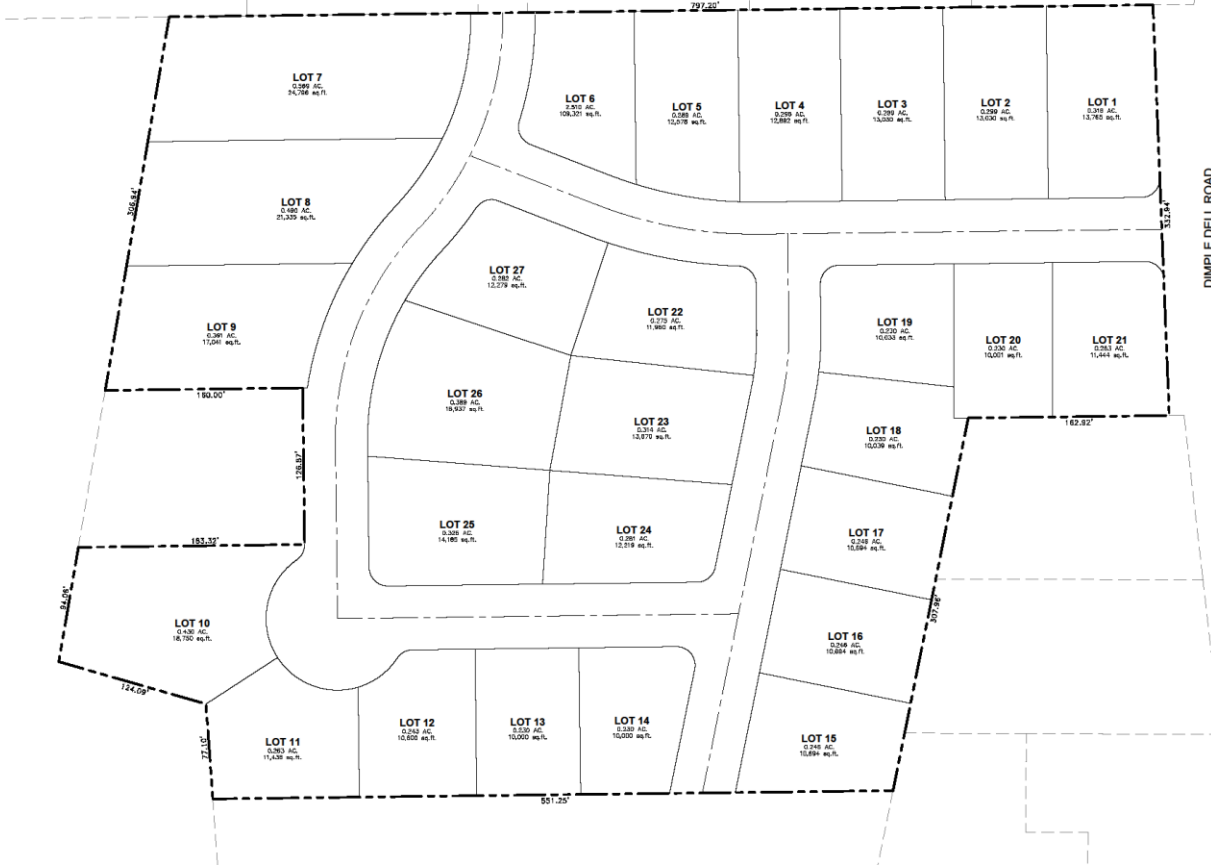
OLSEN CONCEPT



**WILDING
ENGINEERING**
14781 South Heritage Drive Way
Bloomfield, Utah 84005
801.568.8115
WWW.WILDINGENGINEERING.COM

DRAWING NOTES:
GENERAL NOTES:

© 2022 Wilding Engineering, Inc. All Rights Reserved. Development Group/Urban Planning Dept./Concept 3.dwg



NO.	REVISION	DATE

PROJECT INFORMATION

OLSEN PROPERTY

CONCEPT

SANDY, UTAH

DRAWN: KMD CHECKED: --- PROJECT #: ---

DATE: 8/16/2022

SCALE: 1" = 40'

SHEET: 1 OF 1

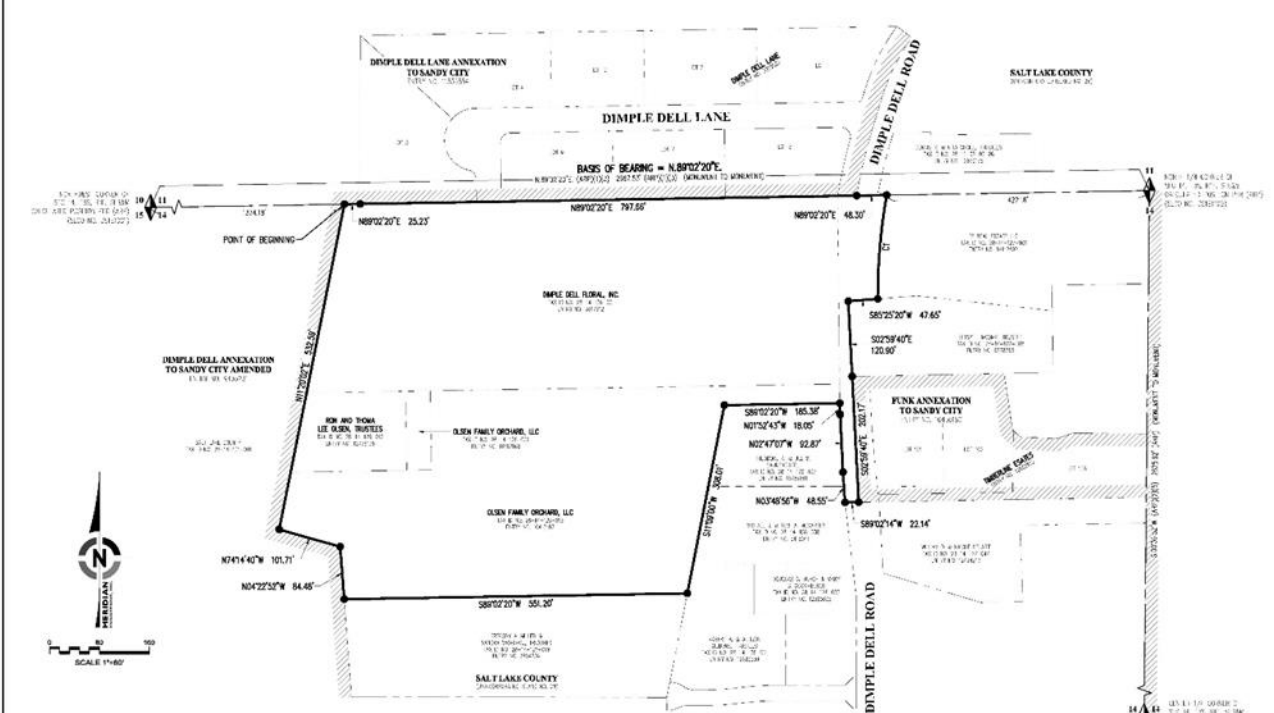
ENGINEER'S STAMP

Olsen Farms Annexation

FINAL LOCAL ENTITY PLAT OLSEN FARM ANNEXATION TO SANDY CITY

SITUATED IN THE NORTHWEST 1/4 OF SECTION 14,
TOWNSHIP 3 SOUTH, RANGE 1 EAST, SALT LAKE BASE & MERIDIAN,
SALT LAKE COUNTY, STATE OF UTAH

PRELIMINARY - NOT TO BE RECORDED



SURVEYOR'S CERTIFICATE

I, the undersigned, being a duly qualified and licensed Surveyor under the laws of the State of Utah, do hereby certify that the foregoing is a true and correct plat of the Olsen Farm Annexation to Sandy City, as shown on the attached map, and that the same has been surveyed and measured in accordance with the laws of the State of Utah, and that the same is a true and correct plat of the said annexation.

[Signature]
DAVID L. GARDNER
 SURVEYOR
 1110 WEST 100 SOUTH
 SALT LAKE CITY, UTAH 84119

ANNEXATION DESCRIPTION

That certain parcel of land situated in the Northwest 1/4 of Section 14, Township 3 South, Range 1 East, Salt Lake Base & Meridian, Salt Lake County, State of Utah, containing approximately 120.00 acres, more or less, and being more particularly described as follows: ... (Detailed description of the parcel boundaries and area).

SURVEYOR'S NARRATIVE

That the survey was made on the 15th day of August, 2011, and that the same was made in accordance with the laws of the State of Utah, and that the same is a true and correct plat of the said annexation.

LOCAL ENTITIES

ANNEXATION FROM:	15, 16, 17, 18
ANNEXATION INTO:	060847-001

FINAL LOCAL ENTITY PLAT

OLSEN FARMS ANNEXATION TO SANDY CITY
 SITUATED IN THE NORTHWEST 1/4 OF SECTION 14,
 TOWNSHIP 3 SOUTH, RANGE 1 EAST, SALT LAKE BASE & MERIDIAN,
 SALT LAKE COUNTY, STATE OF UTAH



LEGEND

- EXISTING SURVEY BOUNDARIES
- PROPOSED ANNEXATION BOUNDARIES
- SALT LAKE COUNTY BOUNDARIES
- LOCALITY BOUNDARIES
- SECTION CORNERS

PREPARED BY: **MERIDIAN ENGINEERING, INC.**
 ENGINEERING CERTIFICATE: I, the undersigned, being a duly qualified and licensed Professional Engineer under the laws of the State of Utah, do hereby certify that the foregoing is a true and correct plat of the Olsen Farm Annexation to Sandy City, as shown on the attached map, and that the same has been surveyed and measured in accordance with the laws of the State of Utah, and that the same is a true and correct plat of the said annexation.

SANDY CITY APPROVAL

OFFICE	DATE	BY	FOR

SALT LAKE COUNTY SURVEYOR

APPROVED BY:	
DATE:	

SALT LAKE COUNTY RECORDER

RECORDED BY:	
DATE:	

COMB FILE

PROJECT NO.	22212
SHEET NO.	1 OF 1