

City Council

January 31, 2023

Comprehensive Storm Water Management Program Updates



Tyler Shelley, Chief Engineer
Storm Water Program Manager
Floodplain Administrator



CSWMP

Comprehensive Storm Water Management Program

MCM BMPs

Minimum Control Measure
Best Management Practices

SDMP

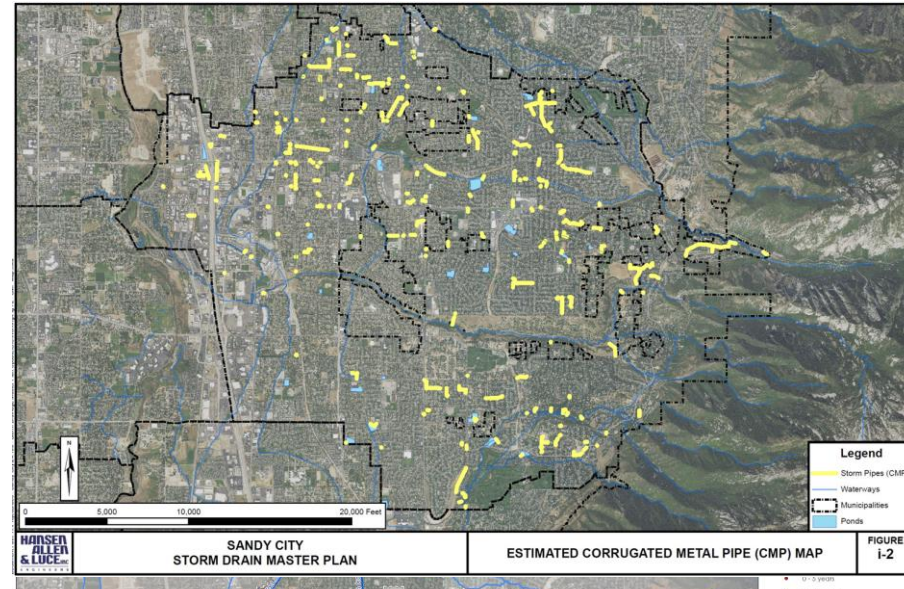
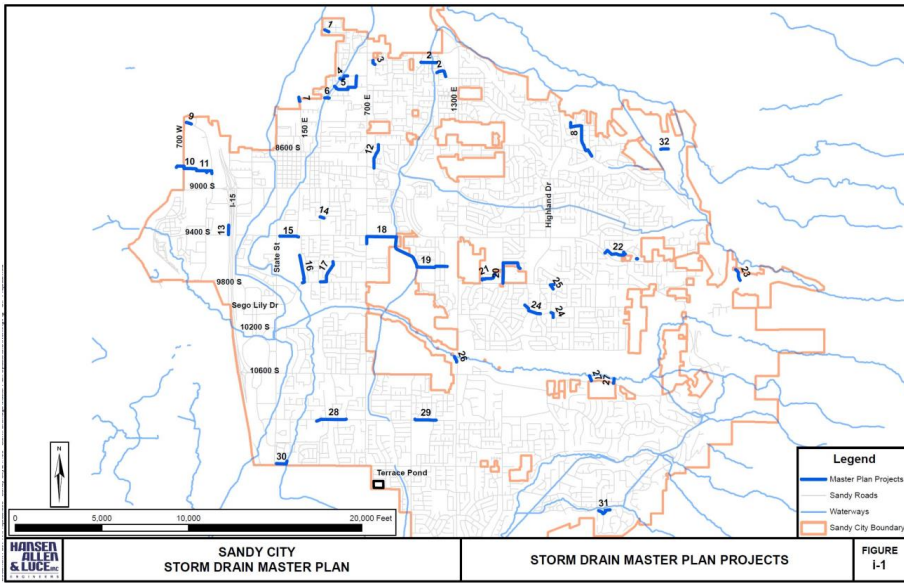
Storm Drain
Master Plan

SDAMP

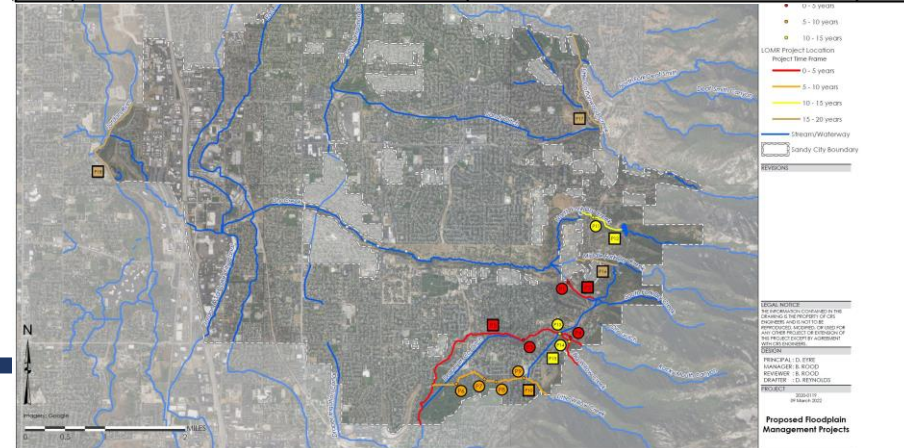
Storm Drain Asset
Management Plan

FMP

Floodplain
Management Plan

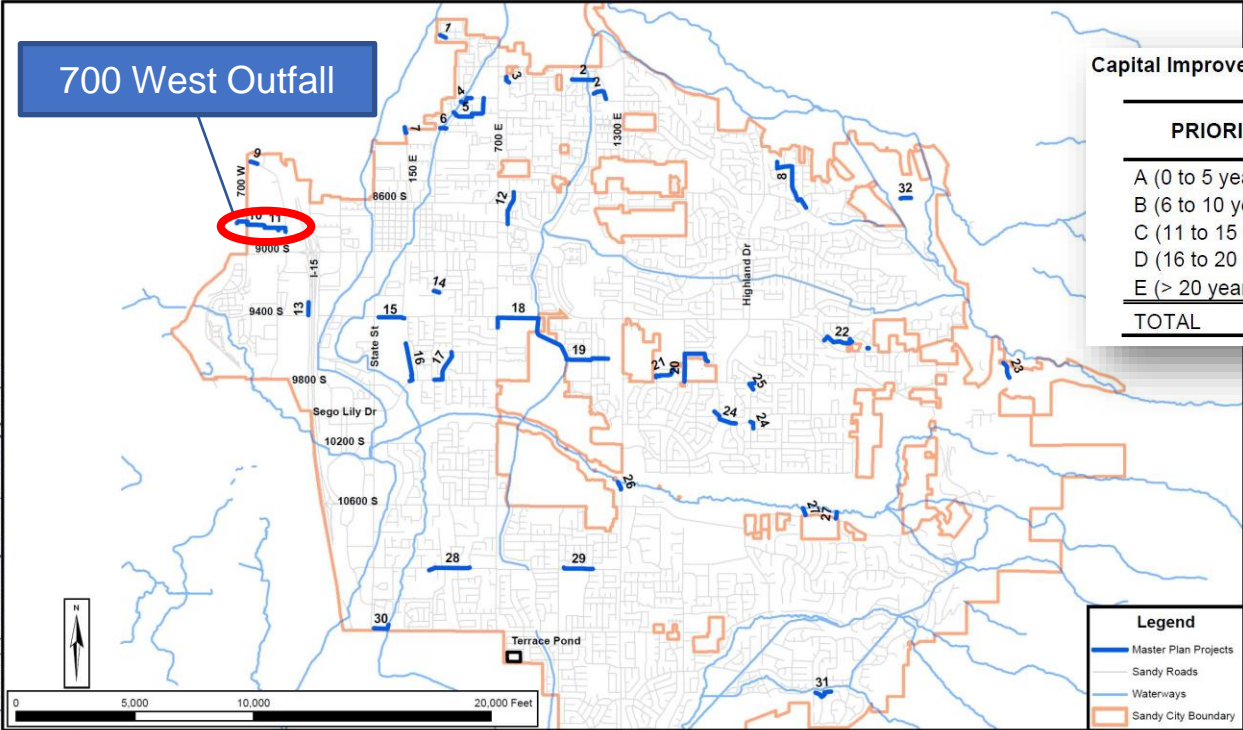


CAPITAL IMPROVEMENTS (20 YEAR PLAN)	COST
Conveyance	\$23,270,000
CMP	\$16,551,000
Floodplain Management	\$2,162,000
TOTAL	\$41,983,000



CIP Projects

700 West Outfall



Capital Improvement Plan Costs by Priority

PRIORITY	TOTAL COST (2022 dollars)
A (0 to 5 years)	\$5,776,800
B (6 to 10 years)	\$3,335,000
C (11 to 15 years)	\$5,280,800
D (16 to 20 years)	\$7,926,400
E (> 20 years)	\$951,300
TOTAL	\$23,270,300

Legend

- Master Plan Projects
- Sandy Roads
- Waterways
- Sandy City Boundary



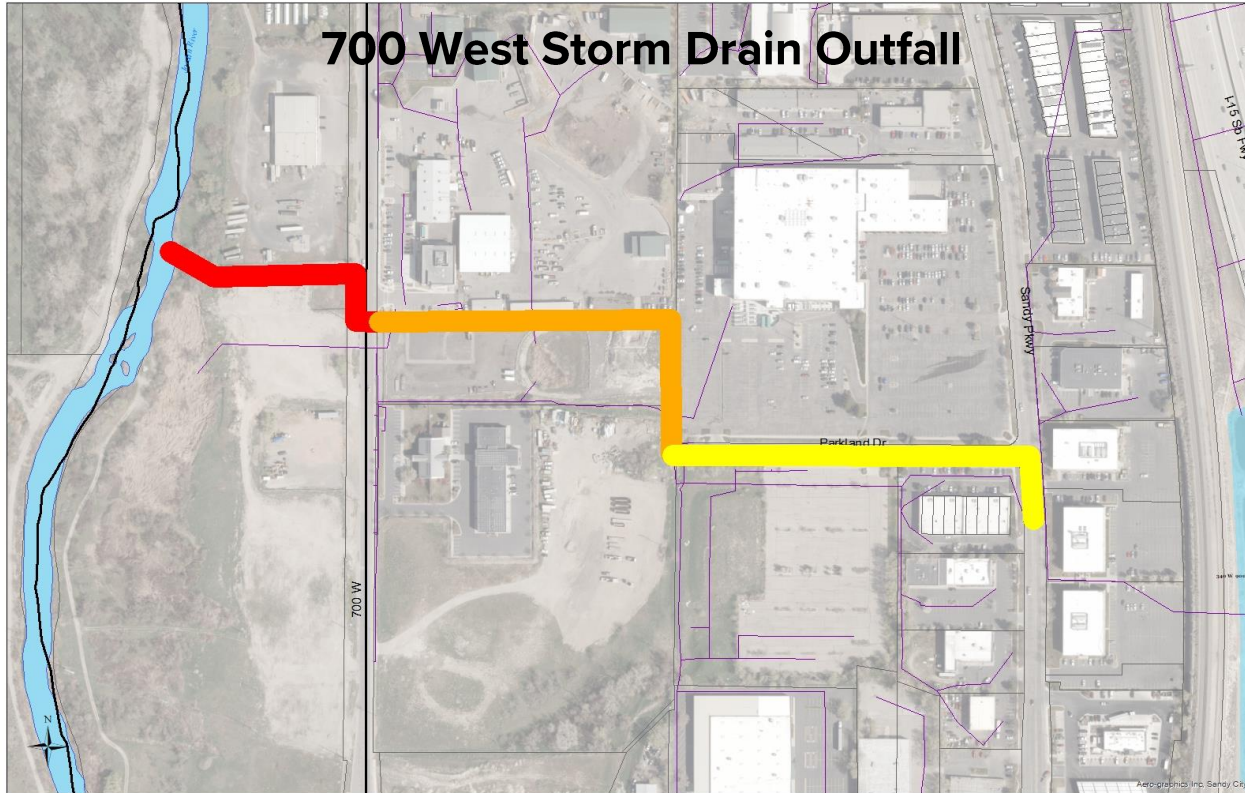
SANDY CITY
STORM DRAIN MASTER PLAN

STORM DRAIN MASTER PLAN PROJECTS

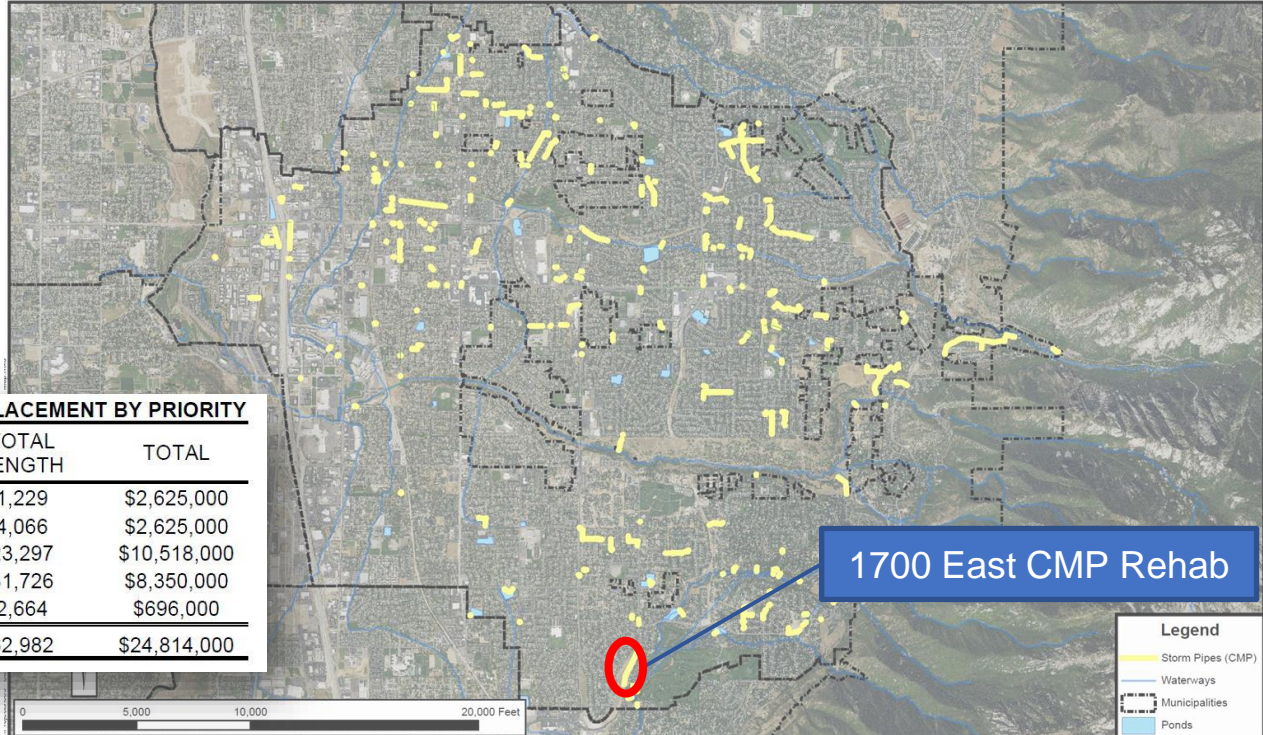
FIGURE
i-1



700 West Storm Drain Outfall



CIP Projects



CMP STORM DRAIN REPAIR/REPLACEMENT BY PRIORITY

Priority	PRIORITY SCORE	TOTAL LENGTH	TOTAL
1	10 AND 9	1,229	\$2,625,000
2	8 AND 7	4,066	\$2,625,000
3	6 AND 5	23,297	\$10,518,000
4	4 and 3	31,726	\$8,350,000
5	2 and 1	2,664	\$696,000
TOTAL		62,982	\$24,814,000

1700 East CMP Rehab

Legend

- Storm Pipes (CMP)
- Waterways
- Municipalities
- Ponds

HANSEN ALLEN & LUCE, INC. SANDY CITY STORM DRAIN MASTER PLAN

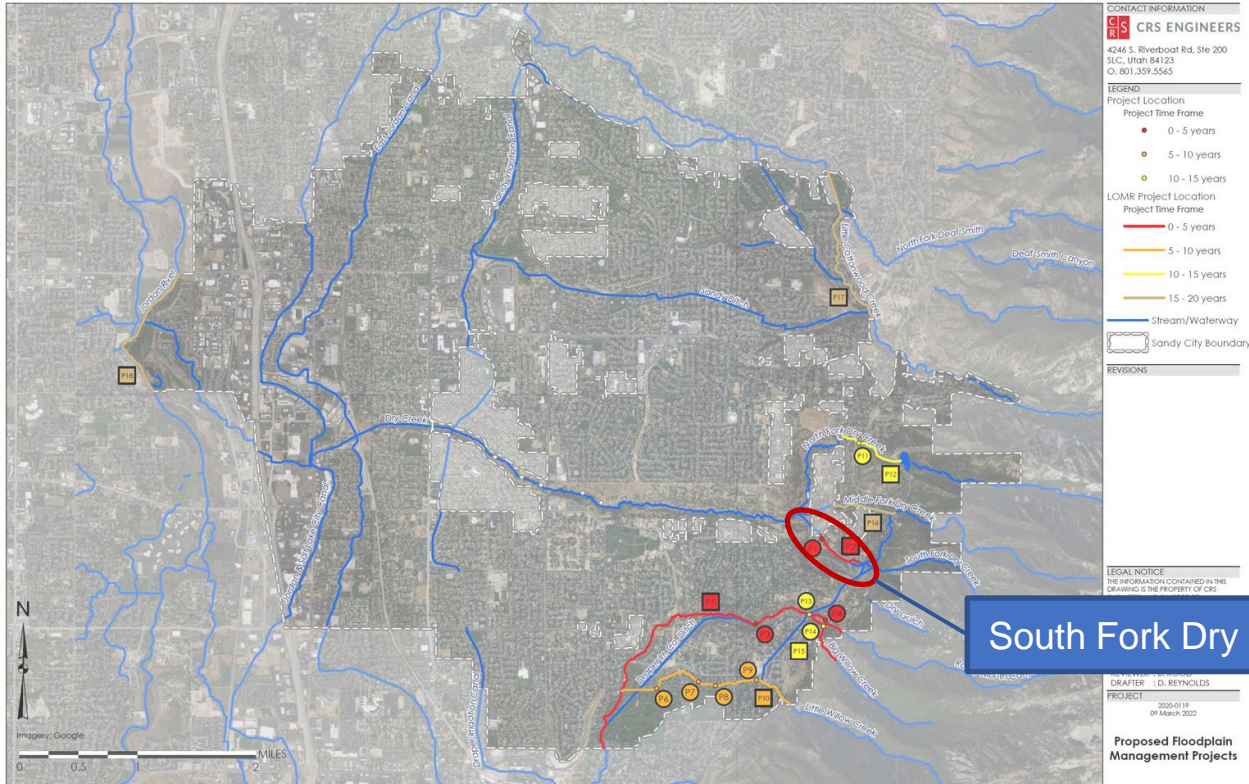
ESTIMATED CORRUGATED METAL PIPE (CMP) MAP

FIGURE i-2

1700 East CMP Rehabilitation

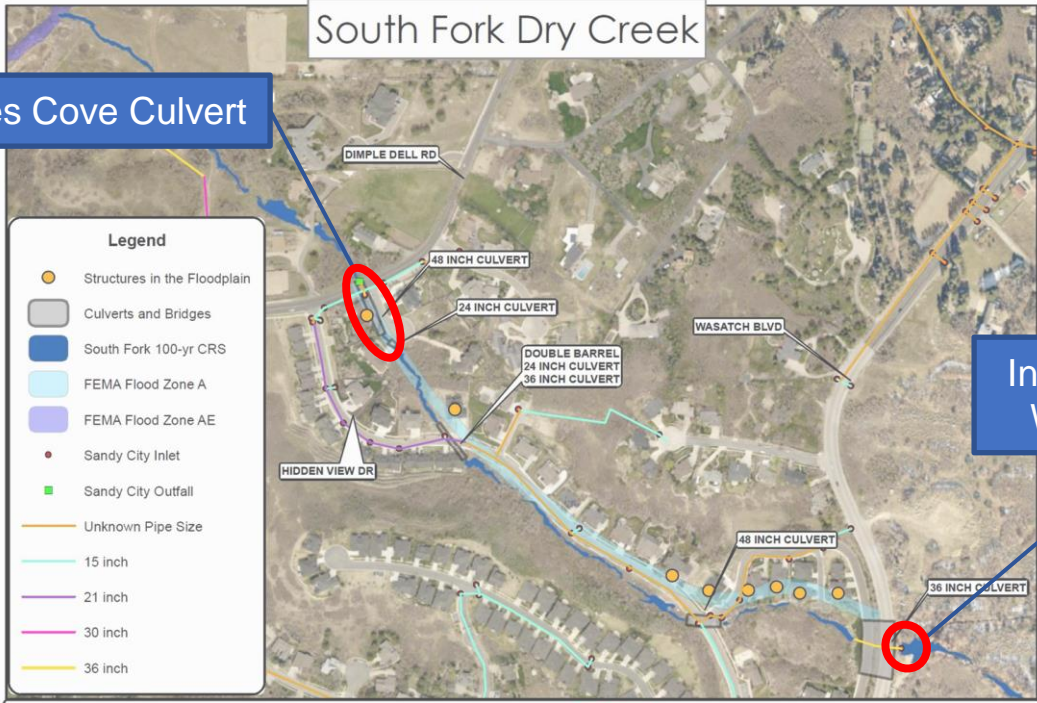


CIP Projects



South Fork Dry Creek

Tall Pines Cove Culvert



Inlet Structure at Wasatch Blvd

SOUTH FORK DRY CREEK FLOOD EXTENTS



CRS ENGINEERS

Storm Water Rate Study

Objectives

- Pay for Capital Improvements = \$2.1 million / year
- Keep up with inflationary costs
- Maintain adequate fund balance
 - 180 days cash on hand
 - Approximately \$2 million

CAPITAL IMPROVEMENTS (20 YEAR PLAN)	COST
Conveyance	\$23,270,000
CMP	\$16,551,000
Floodplain Management	\$2,162,000
TOTAL	\$41,983,000

Rate Increases

- Existing storm water rate = \$6.00/ERU per month
- Proposed rate increases = \$1.20 - \$1.50/ERU per month
 - Capital improvements and inflation
 - Additional operations needs for asset management and city-owned facilities storm drain systems



Thank You!

Any questions?