

RESOLUTION #22-24C

**A RESOLUTION AMENDING THE SANDY CITY COUNCIL DISTRICT BOUNDARIES
FOLLOWING THE 2020 U.S. CENSUS**

WHEREAS, every ten (10) years the U.S. Census provides updated population estimates to local governments throughout the nation; and

WHEREAS, following the decennial census Sandy City is required by the State of Utah to review and, if necessary, re-adjust the boundaries of each Council district so that those districts are substantially equal in population; and

WHEREAS, the existing City Council districts, in combination with the 2020 decennial census, have been reviewed by the City Council; and

WHEREAS, the City Council finds that the existing districts are not substantially equal in population to one another; and

WHEREAS, the City Council has directed City staff to develop three (3) alternative council district maps that each balance the population of the four (4) districts so that they are substantially equal in population; and

WHEREAS, the City Council has discussed and debated the alternative maps and provided opportunities for the residents of Sandy City to provide input on the alternative maps, including holding a public hearing on May 3, 2022; and

WHEREAS, The City Council must approve one of the alternative maps prior to May 10, 2022.

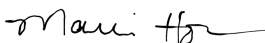
NOW THEREFORE, BE IT RESOLVED BY THE CITY COUNCIL OF SANDY CITY that the Sandy City Council Districts shall be amended as described in Alternative Map 4-1____ (Exhibit "A"), which will effectively adjust the population within each City Council district so that they are substantially equal.

The Mayor is hereby directed to take all steps necessary to ensure that this order is executed prior to May 10, 2022.

This resolution shall become effective immediately.

PASSED AND APPROVED by the Sandy City Council this 3rd day of May 2022.

DocuSigned by:



8AAE0526672A4A2...
Marci Houseman Chair
Sandy City Council

ATTEST:

DocuSigned by:



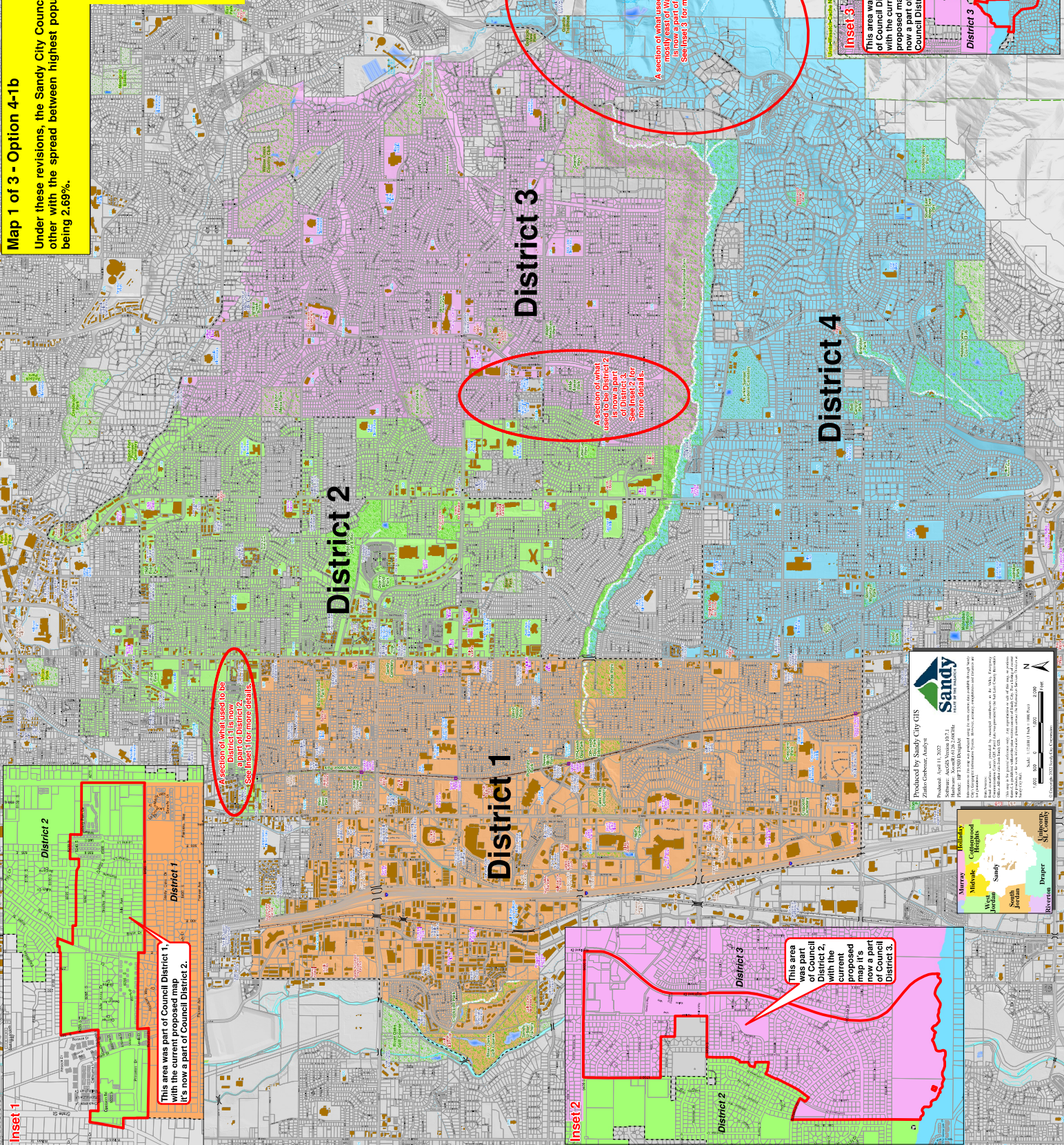
688E7E8272014B1...
City Recorder



Map 1 of 3 - Option 4-1b

Under these revisions, the Sandy City Council Districts are now within 5% of each other with the spread between highest population and lowest population District being 2.69%.

Population per Proposed City Council Districts, using 2020 Census data			
CC District	Population	% of total	
District 1	25,638	26.66	
District 2	23,049	23.97	
District 3	24,232	25.20	
District 4	23,240	24.17	
Totals:	96,159	100.00	



Sandy
City of Sandy, Utah

Produced by Sandy City GIS
Zifeng Geisler, Analyst

Source: ACS 5 Year 2017
Sandy City GIS
Phone: 801 580 8888

Produced April 11, 2023

Scale: 1:25000 (1 inch = 1000 feet)

North Arrow

Scale: 0 500 1000 feet



Sandy City, Utah City Council Proposed Districts Option 4-1b