



Municipal Services District

PLANNING & DEVELOPMENT SERVICES

Brian Tucker
Interim Planning
Supervisor

btucker@msd.utah.gov
(385) 468-6696

Kayla Mauldin

Interim Long Range
Planning Supervisor
kmauldin@msd.utah.gov
(385) 468-6699

Mike George

Interim Stormwater
Supervisor
mgeorge@msd.utah.gov
(385) 468-6682

Trent Sorensen

Chief Building Official
tsorensen@msd.utah.gov
(385) 468-6693

Alicia Gonzalez

Code Enforcement
Supervisor
acgonzalez@msd.utah.gov
(385) 468-6695

Greater Salt Lake
Municipal Service District
2001 So. State Street
Ste. N3-600
Salt Lake City, UT 84190

Main phone: (385) 468-6700

MSD.UTAH.GOV

www.facebook.com/GSLMD

twitter.com/GreaterSLMSD

Dear Sandy City Council,

My name is Kayla Mauldin, and I am the Senior Long Range Planner for the Greater Salt Lake Municipal Services District. Over the past year, I have been working with the Sandy Hills Community Council on a General Plan for the Sandy Hills Unincorporated Area of Salt Lake County.

Recently, it came to our attention that Sandy City was considering a rezone for the Sugarcreek Area (southern portion of Pebblebrook Golf Course). While the community is sad to lose the golf course, they are excited to see that development proposals for the area include a trail connection from Quarry Bend to Waters Lane. One of the primary concerns identified through our General Plan process is the lack of connections (particularly east / west) from Sandy Hills' neighborhoods to desired community destinations. Exhibit A shows a map of existing transportation assets and gaps in the community.

I ask that you please consider the provision of a trail connection as a part of the rezone of this property. The path addition would benefit both our communities by:

- Linking neighborhoods to commercial and recreational destinations;
- Enhancing safe routes to school for Silver Mesa Elementary School; and
- Providing a safe trail connection for residents wanting to access transit stops on 9400 S.

Thank you for your consideration, and please do not hesitate to reach out with any questions on the Sandy Hills General Plan process.

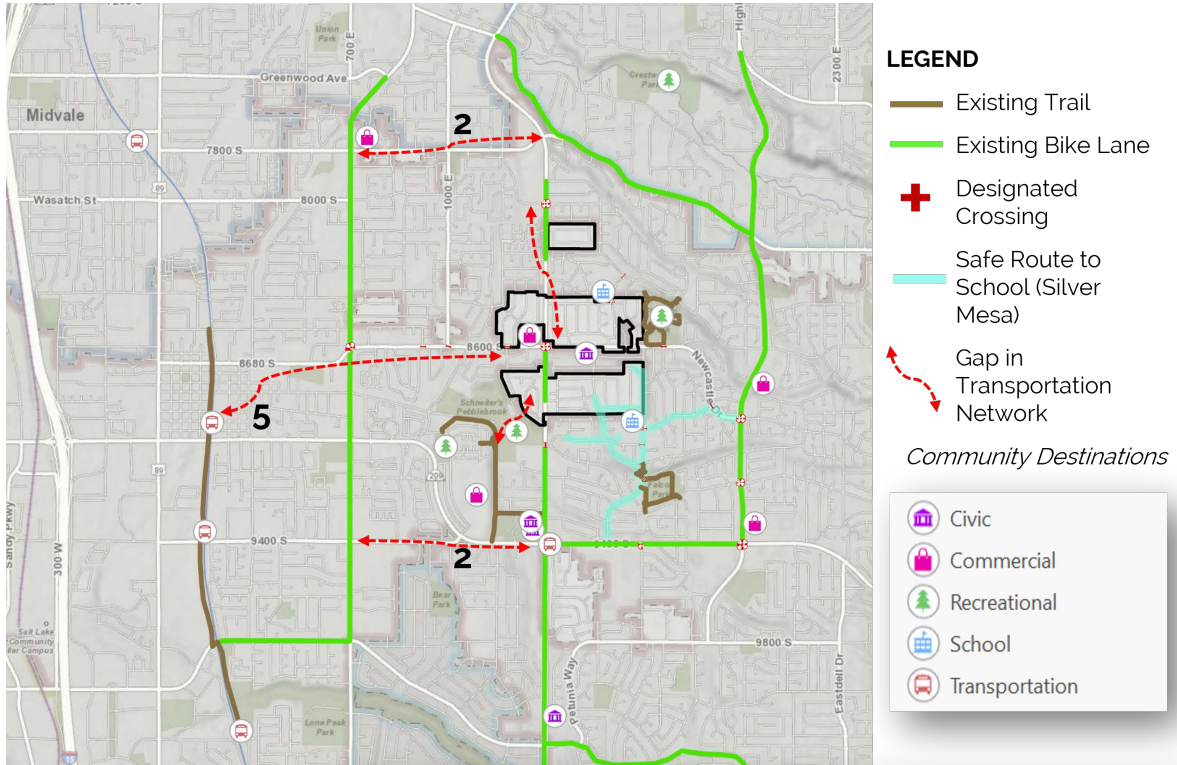
Wishing you all the best,

Kayla Mauldin
KMauldin@msd.utah.gov
<https://bit.ly/lrp-sandyhills>



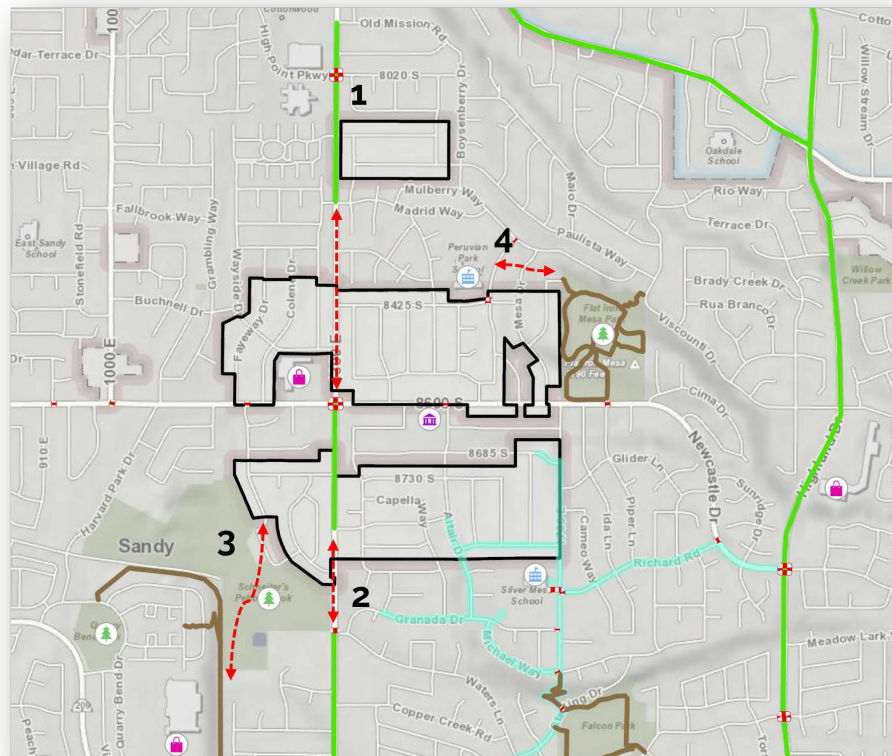
Exhibit A

Transportation Assets and Barriers, Sandy Hills (2022)



Barriers to Multi-Modal Transportation:

1. Extreme distances between crosswalks, especially on 1300 E (between ½ and 1-mile distances).
2. Unexpected gaps in the bike lane network.
3. Lack of trail connections between where people live and where they want to go.
4. No identified Safe Route for Peruvian Park students.
5. Lack of East / West Connection to Transit Stops.



Credit: MSD Long Range Planning, 2022.