



# Sandy City Council Update

## January 13, 2026



**Our Vision:** A sustainable, united organization that provides for the welfare of our communities.

**Our Mission:** To provide sustainable quality integrated waste and recycling collection services for the health and safety of our community... because not everything fits in the can.

**Our Goals:** Sustain a High 90<sup>th</sup> percentile of Customer Satisfaction, Achieve a High 80<sup>th</sup> Percentile of Employee Satisfaction, Environmental and Financial Stewardship and Loss Prevention.

# WFWRD Services Overview



## Base Residential Services (\$26/month) include:

- Weekly 96-gallon curbside garbage & recycling collections
- Bulky waste collection via Seasonal Container Reservation Program (SCRP)
  - Mid-April through September
- Landfill Vouchers for a residential truck, car, or trailer loads (~\$75k/year)
- Central glass drop-off locations and collection services
- Container Repair and Replacement (5 to 7 business days)
- Seasonal Services:
  - Central leaf bag distribution, collections/hauling, and disposition (~\$125k/year)
  - Curbside Christmas tree collections and disposition (~\$75k/year)
- Recycling Education & Outreach and Special Events participation
- In-House, Local Customer Service (M-F 8am-4:45pm)
- In-House, Local Billing/Account Management
  - Monthly Billing Starting January 1, 2026 (first bill in February)

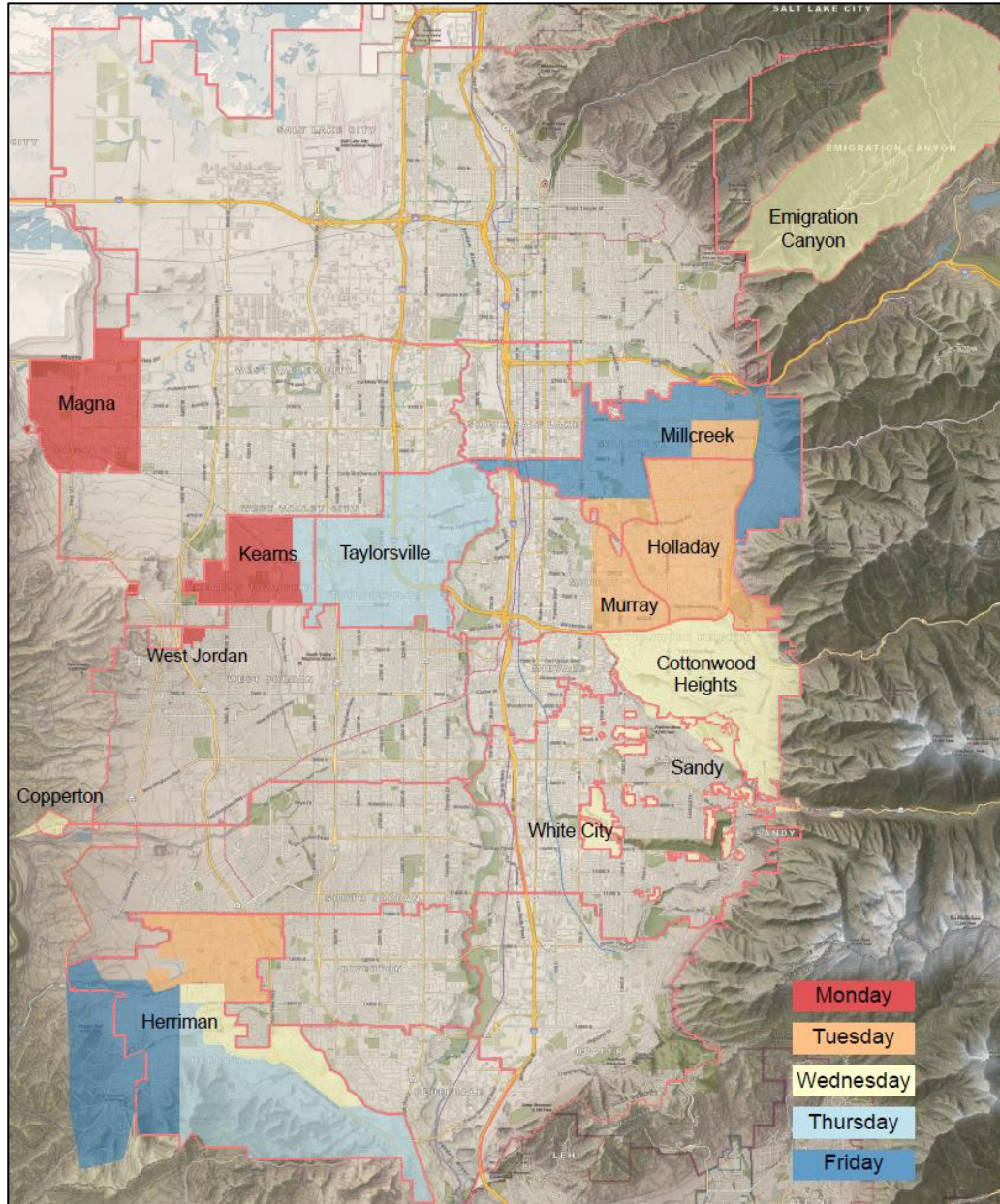
## Additional Services:

- Curbside Green Waste Reclamation Services (March-December)
  - \$12.00 per month
- Curbside Glass Recycling
  - \$8.50 per month





# WFWRD Service Areas



Service Area	# of Homes Serviced
Millcreek	15,745
Taylorsville	13,789
Herriman	10,893
Kearns	10,023
Cottonwood Heights	9,977
Holladay	9,085
Magna	7,988
Murray	2,865
White City	1,826
Sandy Hills	819
Sandy City	505
Willow Creek	501
Granite	435
Copperton	285
Willow Canyon	248
Southwest	211
4B Lane	5
<b>Totals</b>	<b>85,200</b>

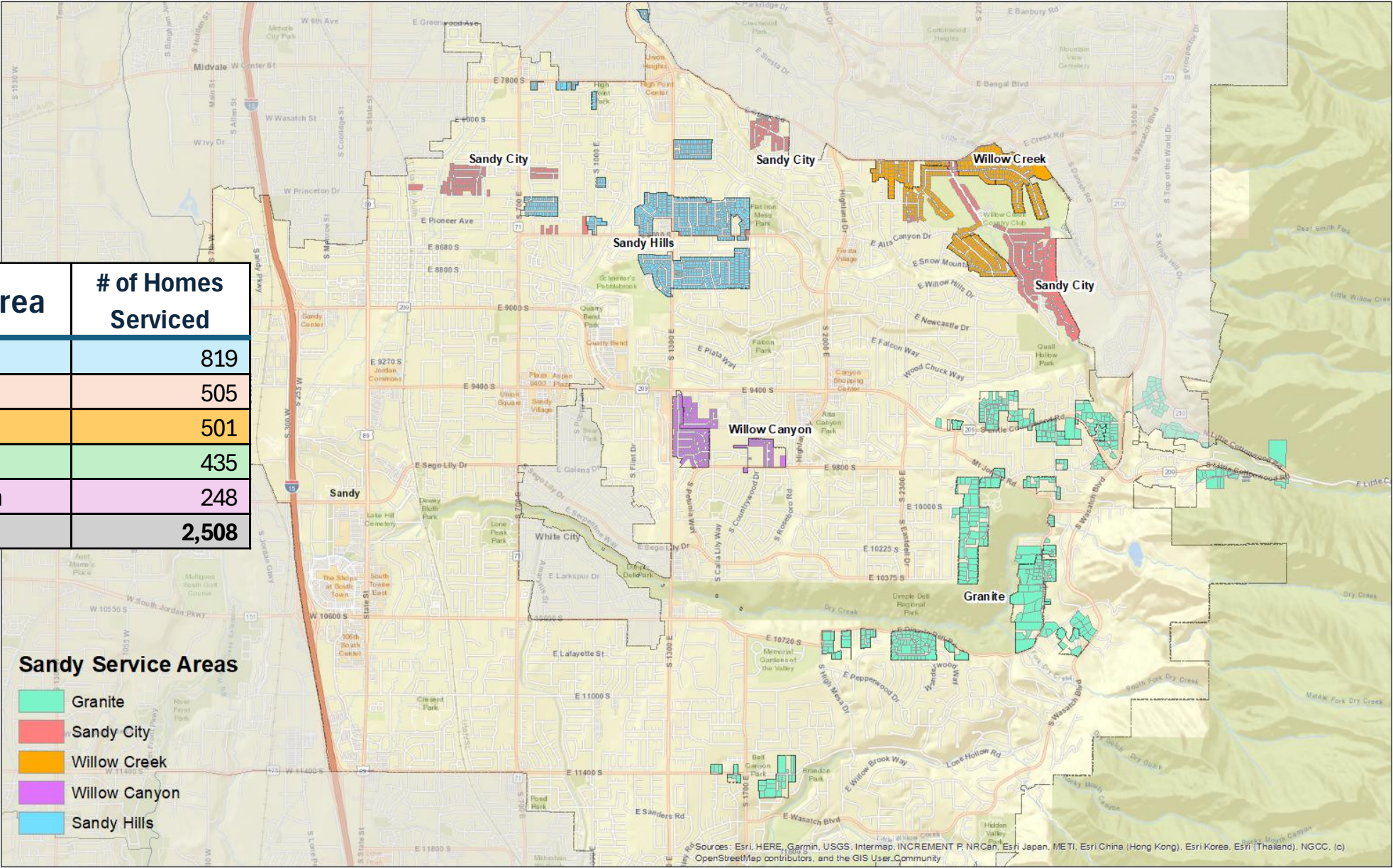
- Number of homes exclude canyon communities
- 86,467 total homes serviced as of November 30, 2025
- Sandy service areas include Sandy Hills, Sandy City, Willow Creek, Granite, & Willow Canyon
  - 2,508 homes serviced throughout Sandy service areas
  - 1,826 additional homes serviced in White City



# WFWRD Sandy Service Areas



Service Area	# of Homes Serviced
Sandy Hills	819
Sandy City	505
Willow Creek	501
Granite	435
Willow Canyon	248
Totals	2,508



# Homes Serviced by WFWRD *(excludes canyon communities)*



## Total Homes Serviced & Cans per Service Area as of November 30, 2025

Service Area	# of Homes Serviced	Trash Cans Combined	Recycle Cans Combined	Green Cans Combined	Glass Cans Combined	Total Cans
Millcreek	15,745	16,832	15,654	3,350	824	36,660
Taylorsville	13,789	15,644	13,905	1,700	118	31,367
Herriman	10,893	12,422	11,262	1,857	-	25,541
Kearns	10,023	10,984	10,184	523	-	21,691
Cottonwood Heights	9,977	10,983	10,087	1,762	407	23,239
Holladay	9,085	10,395	9,159	1,843	365	21,762
Magna	7,988	8,758	8,037	475	-	17,270
Murray	2,865	3,173	2,864	435	102	6,574
White City	1,826	2,019	1,849	182	22	4,072
Sandy Hills	819	941	831	103	8	1,883
Sandy City	505	617	504	70	13	1,204
Willow Creek	501	586	518	98	7	1,209
Granite	435	545	445	53	24	1,067
Copperton	285	301	287	8	-	596
Willow Canyon	248	272	249	51	9	581
Southwest	211	255	222	3	-	480
4B Lane	5	11	2	-	-	13
<b>Totals</b>	<b>85,200</b>	<b>94,738</b>	<b>86,059</b>	<b>12,513</b>	<b>1,899</b>	<b>195,209</b>



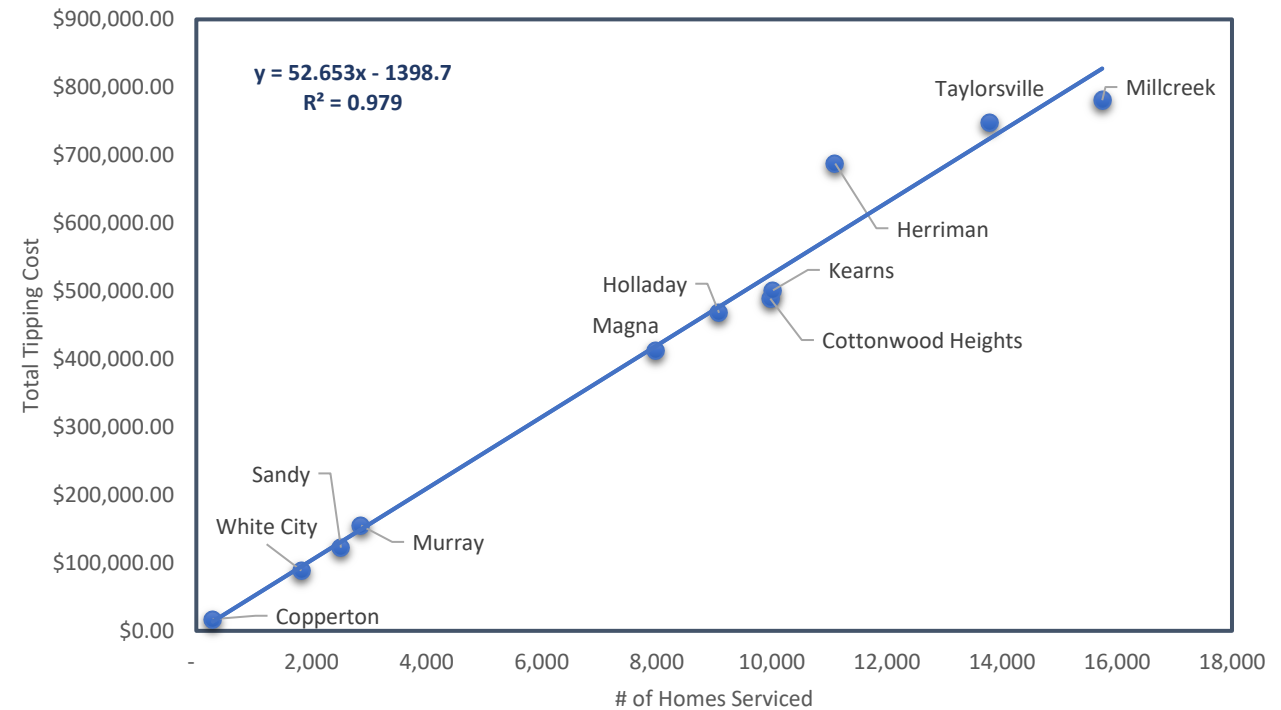
# Cost Comparisons to Other Companies/Agencies/Service Areas

- WFWRD is in the process of updating its service cost comparison throughout the Salt Lake metropolitan area, including Salt Lake County, Utah County, and Davis County
- Due to the varying types of services offered, costs comparisons are often ‘apples to oranges’ and are not directly comparable
- WFWRD has learned that several cities utilize general fund sources to provide ancillary services whereas WFWRD operates as a single enterprise fund with limited revenue sources and overall serviceability

**WFWRD Tipping Costs by Service Area through November 30, 2025**

Service Area	Curbside Waste	Total Curbside Recycle	Curbside Green	Totals
Millcreek	\$625,548.15	\$129,513.82	\$25,952.82	\$781,014.79
Taylorsville	\$609,661.77	\$124,871.86	\$13,888.86	\$748,422.49
Herriman	\$562,864.29	\$111,325.08	\$13,734.58	\$687,923.95
Kearns	\$393,771.24	\$103,459.86	\$4,027.80	\$501,258.90
Cottonwood Heights	\$390,514.69	\$85,586.71	\$12,844.98	\$488,946.38
Holladay	\$371,167.79	\$80,605.16	\$16,374.93	\$468,147.88
Magna	\$324,724.79	\$83,319.65	\$3,580.00	\$411,624.44
Murray	\$117,697.37	\$33,377.36	\$3,889.97	\$154,964.70
Sandy Service Area	\$98,279.66	\$21,480.58	\$2,712.05	\$122,472.29
White City	\$71,422.72	\$15,960.29	\$1,333.67	\$88,716.68
Copperton	\$14,371.43	\$2,738.33	\$60.04	\$17,169.80
<b>Totals</b>	<b>\$3,580,023.90</b>	<b>\$793,429.32</b>	<b>\$98,399.70</b>	<b>\$4,470,662.30</b>

**Total Tipping Cost vs # of Homes Served**



# 3<sup>rd</sup> Quarter 2025 YTD Revenues & Expenses *(unaudited)*



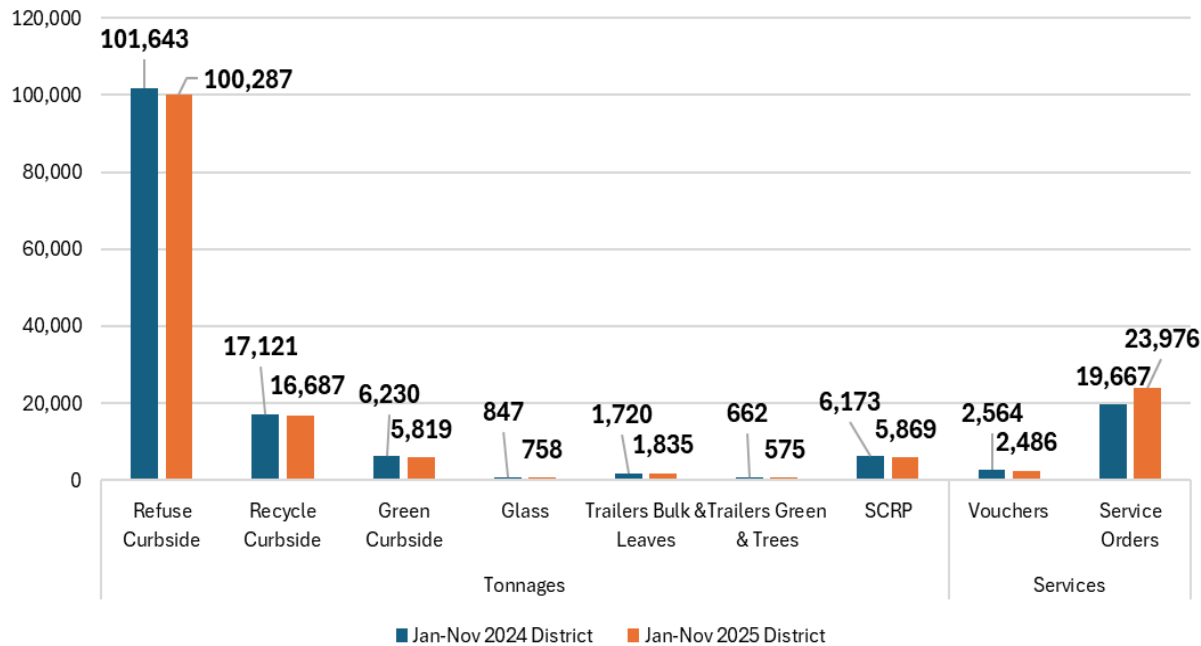
	Actuals to Date 9/30/2025	Budget 2025	Percent of Budget
<b>Revenues</b>			
<b>Total Revenues</b>	<b>\$ 24,858,001</b>	<b>\$ 31,292,700</b>	<b>79.4%</b>
<b>Expenses</b>			
<b>Personnel Expenses</b>			
Total Personnel Expenses	\$ 8,011,062	\$ 12,803,700	62.6%
<b>Operating Expenses</b>			
Fuel	\$ 843,298	\$ 1,641,500	51.4%
Maintenance	3,606,605	5,078,600	71.0%
Disposal Fees SLValley Landfill	2,840,432	3,880,000	73.2%
Disposal Fees TransJordan and Other	539,998	770,700	70.1%
Vendor Recycling Fees	597,527	1,045,000	57.2%
Can Purchases	550,104	565,000	97.4%
County Interlocal IT/Phone Services	165,024	241,200	68.4%
Land Lease	11,500	11,900	96.6%
County Interlocal Shared Bldg Costs	258,831	370,900	69.8%
County Interlocal Operations/Truck Lease	127,896	143,800	88.9%
Attorney/Legal	35,230	37,300	94.5%
Property Insurance/Claims	368,874	330,500	111.6%
Other (mailing, postage, office, adv)	971,661	1,677,860	57.9%
Depreciation	1,719,059	2,620,000	65.6%
Interest Expense	48,249	74,740	64.6%
Total Operating Expenses	<u>\$ 12,684,288</u>	<u>\$ 18,489,000</u>	<u>68.6%</u>
<b>Total Expenses</b>	<b>\$ 20,695,350</b>	<b>\$ 31,292,700</b>	<b>66.1%</b>

- 3Q25 financials do not include capital replacement expenses
  - 2025 approved capital expenses totaled \$5.57M
- WFWRD has implemented several cost-savings measures in 2025 while retaining all lines-of-service
  - Reduction-in-Force (RIF) – 3 FTEs
  - Reclassification of some administrative positions
  - Optimizing scheduling and routing to minimize overtime/maximize efficiencies
  - Verification of reported missed pickups
  - SCRP and Landfill Voucher process optimization
  - Ongoing vendor renewal negotiations
  - Purchase of diesel v. CNG trucks due to elevated costs
- Absorbing increased costs, where practicable

# Sandy Service Areas

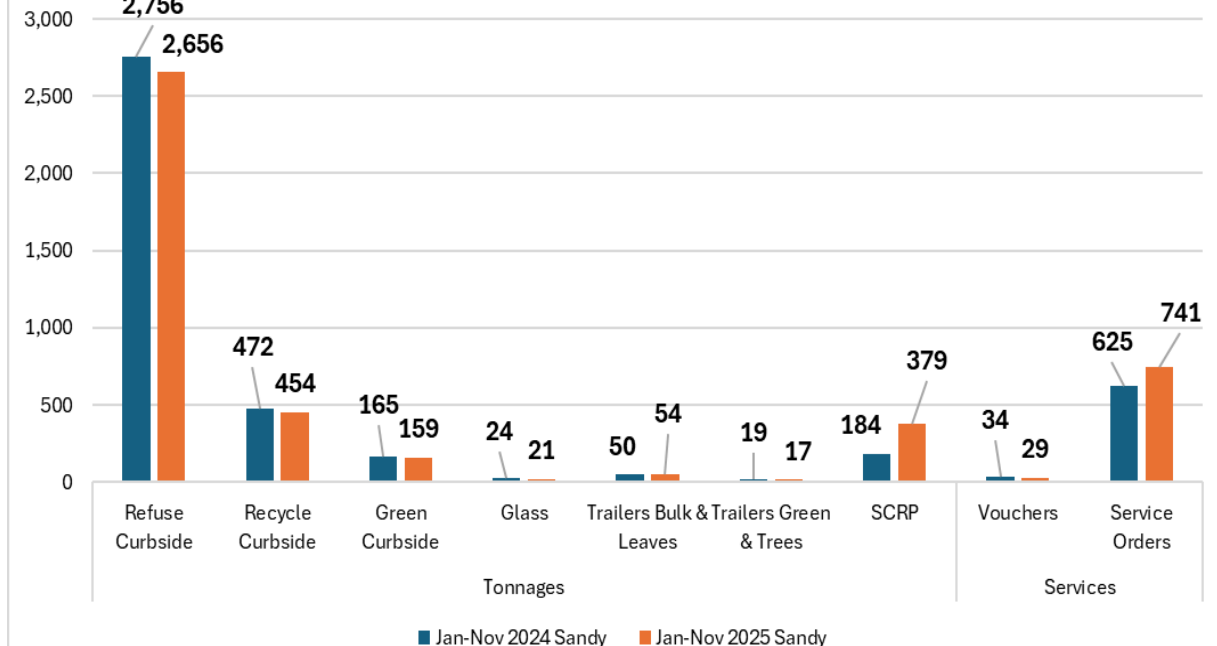
## January through November Tonnage Comparisons and Landfill Vouchers

2024 District vs 2025 District (Jan - Nov)



- ✓ 2024: 2,564 Landfill Vouchers redeemed District-wide at the Trans-Jordan & Salt Lake County Sites totaling \$39,743 in customer savings.
- ✓ 2025: 2,486 Landfill Vouchers redeemed District-wide at the Trans-Jordan & Salt Lake County Sites totaling \$39,776 in customer savings.

2024 Sandy vs 2025 Sandy (Jan - Nov)



- ✓ 2024: 34 Landfill Vouchers redeemed by Sandy Service Area residents totaling \$544 in customer savings.
- ✓ 2025: 29 Landfill Vouchers redeemed by Sandy Service Area residents totaling \$464 in customer savings.



# January-November 2025 Sandy Service Area Tonnages and Diversion

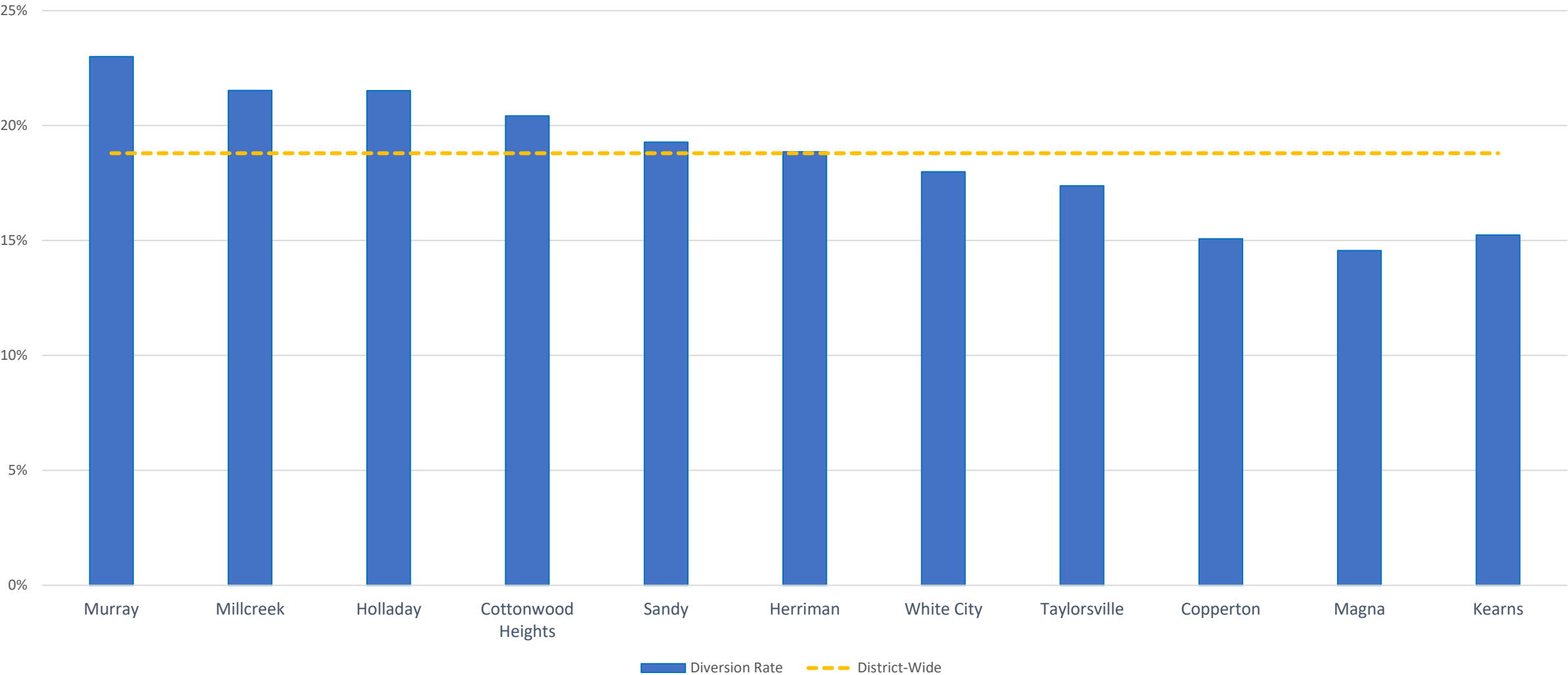


- ✓ The 2,508 homes in the Sandy Service Area are ~3% of the 86,467 homes serviced by the District.
- ✓ Sandy Service Area residents diverted 19% of waste away from the landfill, greater than the District-wide 18.8% diversion rate.
- ✓ Average garbage disposal fee for Sandy = \$37 per ton (SL Valley Transfer Station).
- ✓ Average recycling processing fee for Sandy at Rocky Mountain Recycling = \$47.33 per ton.
- ✓ Recycling contamination rate has decreased 9.28% from 2022 averaging a 2.32-point reduction per year.
- ✓ Processing for green curbside = \$17.05 per ton.

# Diversion Rates by Service Area



Diversion Rate by Service Area  
January-November 2025



# Recycle Can Guide

Recyclables must be empty, clean, and dry. **NO BAGS!**



## Accepted Items

### Plastic Bottles & Jugs (Leave lids on bottles)



### Plastic Tubs & Plastic Jars



### Paper Clean office paper, mail and newsprint. (NO paper plates/cups, or paper towels/tissues)



### Cardboard & Paperboard



### Metal Cans



Aluminum, tin, and empty aerosol cans

Make sure your recycling can lid closes completely. Break down cardboard boxes to fit inside the container and help prevent service interruptions.

### Hard to Recycle Materials

Do you have a hard to recycle item?  
Scan this QR code to see drop off locations for hard to recycle materials!



## Not Accepted Items



**Styrofoam**



**Electronics\***



**Glass\***



**Scrap Metal\***



**Clothing and Shoes\***



**Plastic bags/film\*  
(No bagged recyclables)**



**Bulk Rigid Plastic\***



**Yard Waste\***



**Tanglers**



**Food Waste\***

\* Items may be recycled/reused via other programs in your area  
Scan the "Hard to Recycle" QR code for resources

# Green Waste Can Guide



## Accepted Items



**Weeds and lawn clippings**



**Sticks and branches**



**Tea bags & coffee grounds  
(NO COFFEE FILTERS)**



**Leaves  
(NO BAGS)**



**Eggshells**



**Fruits and vegetables  
(Please remove stickers)**

Accepted items are delivered to Salt Lake Valley Landfill where they are turned into nutrient-rich compost!

- Items not listed should be discarded or recycled separately.
- Keep all items loose — do not bag or tie any material in bundles.
- Make sure the lid closes completely, and cut down branches to fit inside.

## Not Accepted Items



**Compostable or biodegradable packaging**



**Animal Waste**



**Paper and cardboard products**



**Meat or Dairy Products**



**Bagged items**



**Sod, dirt or rocks**



**Construction wood or lumber**



**Trash**



# Seasonal Container Reservation Program (SCRP) Updates



City	% of Repeats 2023	% of Repeats 2024	% of Repeats 2025
4B Lane	100%	100%	50%
Copperton	35%	77%	64%
Cottonwood Heights	34%	38%	14%
Granite	57%	35%	25%
Herriman	36%	40%	33%
Holladay	25%	41%	30%
Kearns	38%	41%	23%
Magna	35%	40%	16%
Millcreek	39%	36%	11%
Murray	34%	43%	36%
Sandy City	17%	50%	5%
Sandy Hills	27%	21%	22%
Southwest	73%	21%	54%
Taylorsville	34%	34%	11%
White City	34%	37%	3%
Willow Canyon	60%	33%	44%
Willow Creek	38%	40%	35%
<b>Avg %</b>	<b>42%</b>	<b>43%</b>	<b>28%</b>

- In 2026, WFWRD is strategizing to increase SCRP service capacity to better meet SCRP service demand
- The overall bulky waste program offered by WFWRD will be evaluated in 2026 in an attempt to identify and implement the optimal program structure (estimated 2027, if applicable)
- The fee-based trailer rental program will be unavailable in 2026 with a shift of resources to support SCRP
- The tiered reservation system will continue to be refined and optimized in 2026

Historical & Projected - ( <i>SCRP &amp; Trailers Combined for projections</i> )	2023	2024	2025	2026
<b>Seasonal</b> Budgeted Positions (Drivers/Ground Crew)	10 / 4	10 / 4	10 / 4	12 / 0
<b>Permanent</b> Budgeted Positions (Drivers)	NA	NA	NA	2
Total Budgeted Positions ( <b>Seasonal</b> & <b>Permanent</b> )	10 / 4	10 / 4	10 / 4	14 / 0
Actual Positions (Drivers/Ground Crew)	6 / 3	6 / 3	8 / 0	TBD
Trucks Leased / Owned	10 / 3	8 / 4	8 / 3	10 / 5
Days of Program	119	120	120	TBD
Total Containers Delivered	7,421	7,105	7,457	TBD
Containers Delivered per Day	62	59	62	72-84

# 2025 SCRCP by City Detail



Municipality/Area	# of Homes in WFWRD	# of SCRCP Days	# of Reservation Spots Available	# of Additional Waitlist Requests	Total Tracked Requests <sup>1</sup>	# of Containers Delivered	% Waitlist Fulfilled	Containers Serviced as a % of WFWRD Homes	Total Tons Collected	Avg. Tons per Container
Holladay	9,083	17	1020	680	1,700	859	36%	9%	549.04	0.64
Murray	2,865					210		7%	133.59	
Cottonwood Heights	9,974	16	960	725	1,685	929	29%	9%	582.20	0.63
Willow Creek	500					55		11%	230.23	
Granite	435	3	180	141	196	40	45%	9%	30.30	0.76
Sandy Hills/Sandy City	1,323					118		9%	89.37	
Willow Canyon	248					36		15%	27.27	
4B Lane (6 homes)	5					2		40%	1.51	
White City	1,826	3	180	164	344	193	34%	11%	139.12	0.72
Herriman, So West	11,056	15	900	460	1,360	898	61%	8%	498.00	0.55
Copperton	285	5	300	7	307	25	100%	9%	13.86	0.55
Magna	7,982	11	660	465	1,125	662	23%	8%	583.08	0.88
Kearns	10,023	15	900	608	1,508	930	25%	9%	765.00	0.82
Taylorsville	13,789	19	1140	895	2,035	1,194	13%	9%	1,130.83	0.95
Millcreek	15,742	21	1260	820	2,080	1,306	23%	8%	1,096	0.84
<b>Totals or Avg.</b>	<b>85,136</b>	<b>120</b>	<b>7,500</b>	<b>4,965</b>	<b>12,340</b>	<b>7,457</b>	<b>29%</b>	<b>9%</b>	<b>5,869</b>	<b>0.79</b>

In order of areas serviced

# 2026 Administrative Initiatives

- Implement Monthly Billing January 1, 2026
  - First monthly bill for January service will be sent in February
  - Ensure consistent cash flow and level out administrative workload (e.g., customer service)
- Seek opportunities to reduce printing and mailing costs while continuing to promote paperless billing subscriptions
  - *Save time, save paper, save money* – Click [here](#) to switch to paperless billing
- Ongoing verification of missed pickups with a new late set-out return pickup fee
  - 2025 savings as of 8/31: \$61,587
  - 2026 projected savings: \$93,000
- Continue and optimize the SCRP tiered reservation process
  - Ensure equitable program while limiting repeat users
- Conduct a Line-of-Service Financial Cost Assessment by Geographic Service Area
  - Develop/solicit an RFP and award to subcontractor
- Evaluate/identify areas to enhance efficiencies, reduce costs, and streamline administrative functions
- Optimize cost-of-service comparisons while accurately identifying communities that utilize alternative funding sources (e.g., general fund) for ancillary services
- Data visualization/analysis, fleet optimization, and evaluate/implement the best use of new and existing technologies
- Continued recycling education and outreach and participation in community events



Starting **January 2026**, your Wasatch Front Waste and Recycling District bill will arrive **every month** instead of every three months.

**BENEFITS OF MONTHLY BILLING**

-  **Smaller, regular bills**  
Easier to fit into your household budget
-  **Payments schedule consistent with other monthly expenses**
-  **Easier to track and manage**  
See your charges regularly and catch changes right away

Want to see the new billing schedule or sign up for e-billing?  
Check out the link in the caption!



**DON'T BAG RECYCLABLES**



**PLACE RECYCLABLES LOOSE IN BIN**

**NO PLASTIC BAGS OR FILM PLASTICS IN RECYCLING**

Thank you for recycling right!

To see a list of accepted items follow the link in the caption



# 2026 Operating Expenses Budget Highlights

**In 2026, WFWRD will continue to seek out opportunities to reduce costs, streamline organizational functions, increase efficiencies, and further optimize operations**

- Continue to purchase diesel (as opposed to CNG) heavy duty truck replacements
  - Estimated purchase savings of at least \$50,000 per side load truck
  - Retain the 8 side load replacement schedule per year (~\$400,000 annual savings)
- Continue right-sizing light-duty vehicle replacements
  - Reduced capital replacement costs, fuel consumption, etc.
- Solicit and negotiate new contracts and/or contract renewals (e.g., process recycling) with a high-quality/best value approach
- Increased Disposal Tipping Fees
  - \$2.00/ton increase at Salt Lake Valley Transfer Station & Landfill (~\$200,000 increase)
    - Landfill \$29→\$31.00/ton (6.9% increase) Transfer Station \$37→\$39.00/ton (5.4% increase)
    - No price changes have been communicated from TransJordan (landfill = \$41/ton)
- Increased Repair & Maintenance Labor Rates
  - Salt Lake County Fleet is adjusting labor rates upwards by \$6.00/hour (~\$82,000 increase)
  - Quarterly SLCo Fleet Performance meetings have been scheduled for 2026
- Increased Fuel Costs
  - CNG is expected to rise ~9% in 2026 (~\$84,000 increase)
  - Diesel costs are anticipated to remain steady or decline



# New Fees Approved for 2026

New fees are intended to reduce, offset, or recover some costs and provide WFWRD leverage in driving District policies, procedures, and initiatives while disincentivizing customer late set-outs and improper recycling practices that create unnecessary costs to WFWRD (not intended as a source of revenue)

- **Payment Transaction Fee** (up to 3% of payment)
  - The District incurs significant fees for receiving online card payments (two separate fees for credit/debit cards)
  - Monthly billing and payments are expected to increase costs (~2x) to the District
  - The District is currently evaluating proposals received from payment processors
  - This fee will not be implemented until a vendor is chosen and the Board decides when and how to impose the fee
    - District staff will bring a formal proposal to a future public meeting for the Board's consideration
    - Avenues for customers to avoid these fees will be incorporated into the subsequent District proposal
- **Late Set-Out Return Pickup Fee** (\$25.00 upon customer request; subject to availability and area)
  - This fee will disincentivize verified late set-out return pickups while allowing the District to recover some costs
  - The District incurs significant costs and operational inefficiencies in the performance of return pickups
  - Initiatives to minimize District missed pickups are ongoing
  - The District did not previously have a fee structure to charge for return pickups due to late set-outs
- **Recycling Contamination Fee** (\$25.00 after three or more documented occurrences)
  - The District continues to emphasize customer education and outreach in an effort to reduce recycling contamination
  - Contamination rates have shown continuous decreases over the past several years
  - Current District policy is to remove a recycling container after three documented occurrences, which comes at a significant cost to the District (removal and reinstatement, oftentimes including the >\$70.00 cost of a new can)
  - Based on the tonnages delivered to the WM Recycling Processing facility through September 30, 2025 (3,562 tons) and their blended rate model, contamination has cost the District ~\$64,000 in 2025 YTD
  - The contamination rate at the Rocky Mountain Recycling (RMR) facility is less (~20%) and subtracted from the District's 60% revenue share agreement with RMR
  - The District will continue to drive an educate-first approach in 2026 and deployment of "Oops" Tags in coordination between the Waste Diversion, Customer Service, and Operations teams



Wasatch Front Waste Residential Single Stream Pricing						
Publication	Market	Grade	October-25		Percentage	Value
			Price			
Pulp & Paper (OBM)	Southwest	High	Resi Fiber # 56	\$35	5.9%	\$2.07
Pulp & Paper (OBM)	Southwest	High	OCC # 11	\$45	36.9%	\$16.60
Pulp & Paper (OBM)	Southwest	High	Mixed Paper # 54	\$15	13.0%	\$1.95
Recyclingmarkets.net (SMP)	Pacific NW	Avg	Natural HDPE	\$710	1.4%	\$9.92
Recyclingmarkets.net (SMP)	Pacific NW	Avg	Colored HDPE	\$50	1.4%	\$0.71
Recyclingmarkets.net (SMP)	PNW/Houston	Avg	PET	\$40	2.4%	\$0.96
Recyclingmarkets.net (SMP)	PNW/Houston	Avg	Actual Steel/Tin Cans	\$75	1.2%	\$0.87
Recyclingmarkets.net (SMP)	Pacific NW	Avg	Aluminum Cans	\$1,600	1.4%	\$21.74
Recyclingmarkets.net (SMP)	Pacific NW	Avg	Plastics 4 & 5	\$30	1.2%	\$0.36
			Other Plastic	(\$54)	1.5%	(\$0.78)
			3 mix Glass	(\$54)	0.4%	(\$0.19)
			Residue	(\$54)	23.5%	(\$16.06)
					100.0%	\$36.13
The index prices and rebate will be adjusted on a monthly basis. If above indexes do not reasonably reflect actual market conditions, actual sales price for the grade may be utilized The stream composition will be adjusted on a quarterly basis.						
Rebate/Tip Fee Calculation						
			To SL MRF			Taylorsville To SL MRF
Material Sales Value			\$	36.13		
Less base fee			\$	(113.19)		
Available Commodity Value			\$	(77.06)		
Customer rebate % (if positive)				60.0%		
Customer Base Rebate/(Tip Fee) per Ton			\$	(77.06)		\$ (77.06)



# Thank You!



# Questions?



**EVAN TYRRELL**

*General Manager*

604 West 6960 South

Midvale, UT 84047

Office: (385) 468-6342

Email: [etyrrell@wfwrdutah.gov](mailto:etyrrell@wfwrdutah.gov)