

EAST FACE

BREAKDOWN OF MAJOR BUILDING MATERIALS

MATERIAL	MATERIAL S.F.	TOTAL AREA OF EAST FACE	% OF MATERIAL FOR EAST FACE
GRANITE	1,283 S.F.	19,674 S.F. OF TOTAL SURFACE AREA	7%
T&G WOOD LOOK ALUMINUM RAIN SCREEN SYSTEM	5,515 S.F.		28%
PREFINISHED ALUMINUM COMPOSITE MATERIAL RAIN SCREEN SYSTEM (ACM)	3,409 S.F.		17%
OPENINGS (DOORS / WINDOWS / GLASS FASCIA)	9,467 S.F.		48%
MECHANICAL WALL LOUVERS	0 S.F.		0%

KEYED NOTES

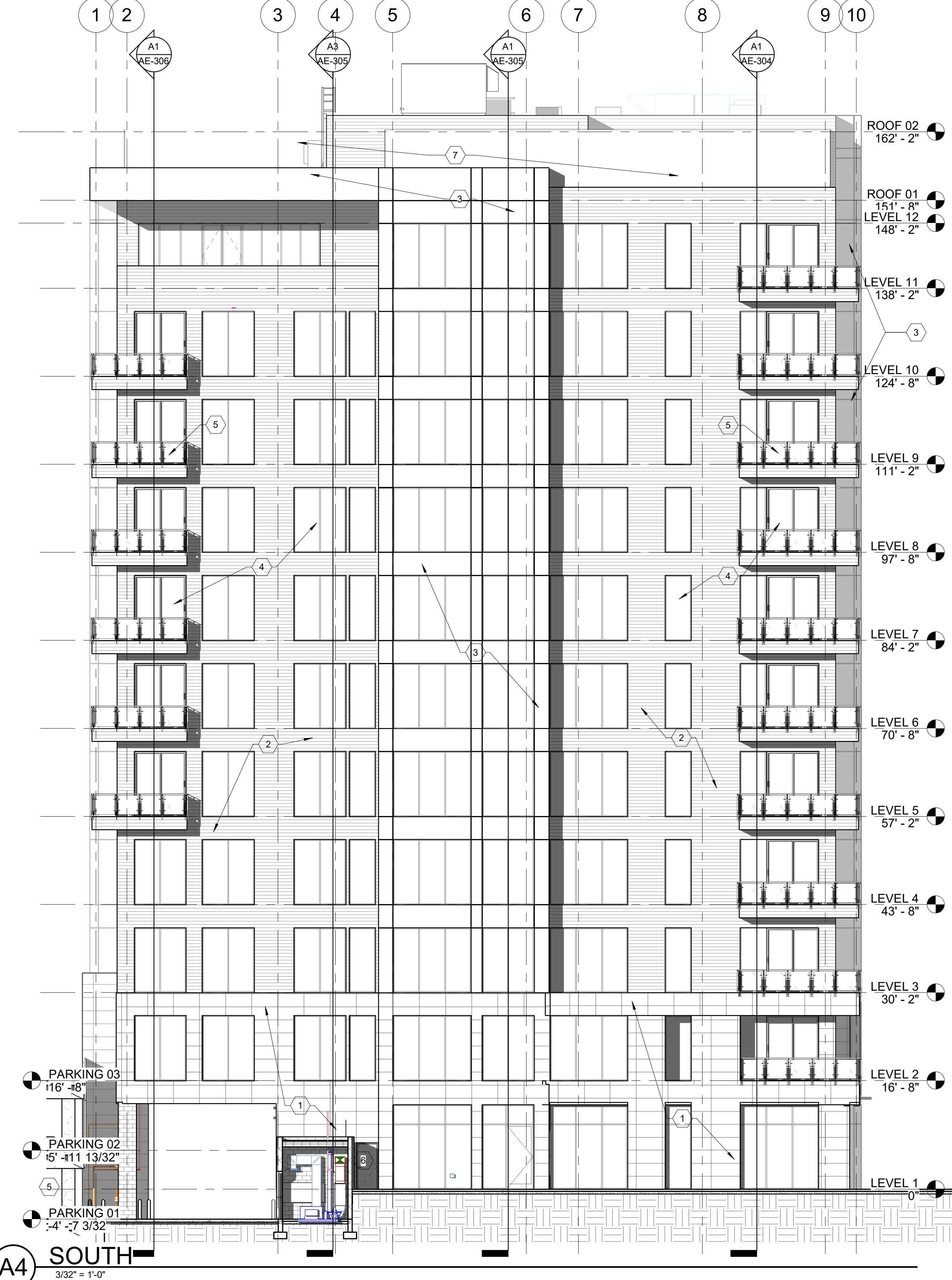
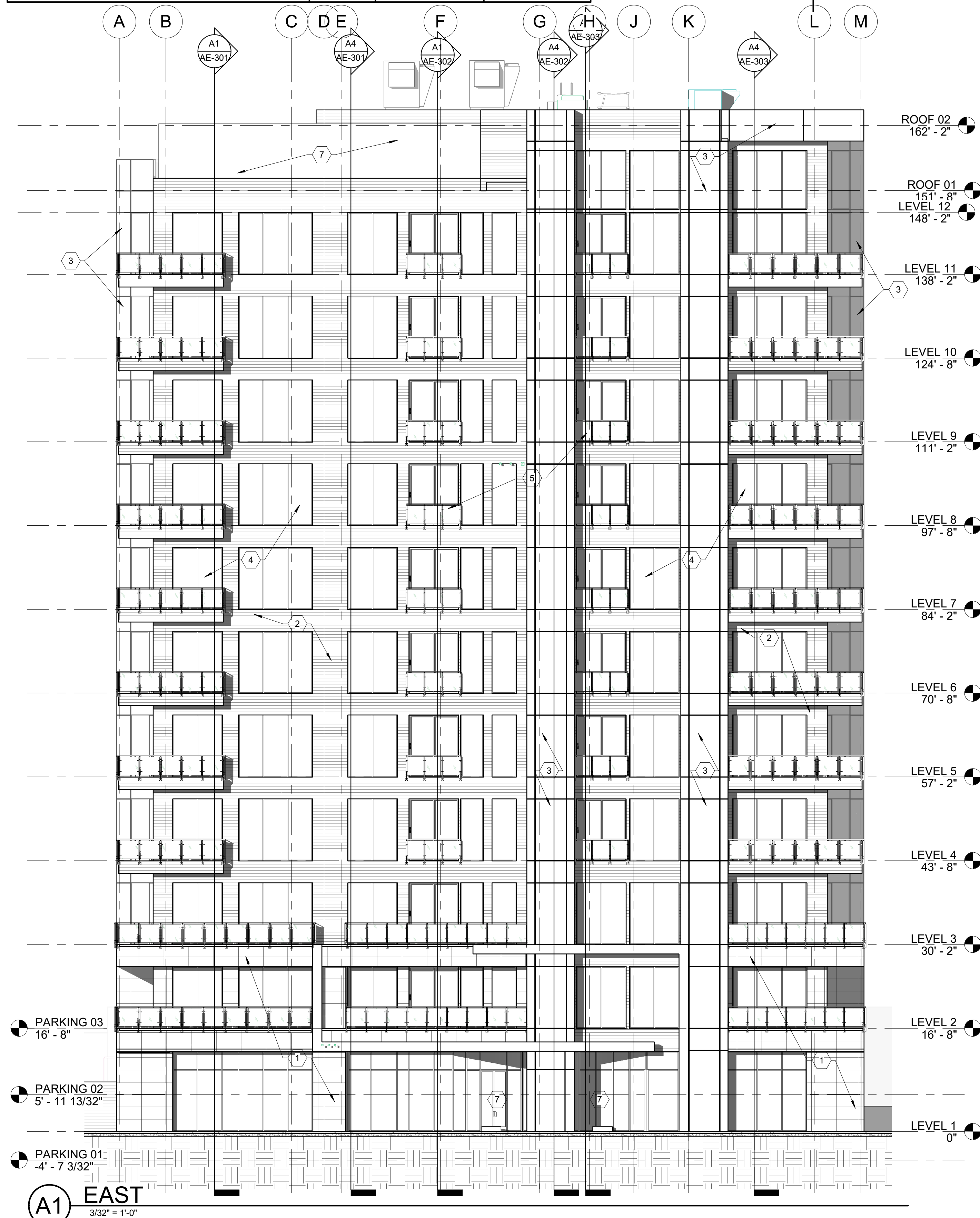
REFERENCE AE-201 & AE-202

- 1 BLACK GRANITE PANELS UP TO LEVEL 3.
- 2 T&G WOOD LOOK ALUMINUM RAIN SCREEN SYSTEM.
- 3 PREFINISHED ALUMINUM COMPOSITE MATERIAL RAIN SCREEN SYSTEM (ACM).
- 4 ALUMINUM FRAMED STOREFRONT WINDOW / SLIDING DOOR SYSTEM TYPICAL - COORDINATE WITH PLANS, SCHEDULES AND WINDOW / DOOR ELEVATIONS.
- 5 42" HIGH STAINLESS STEEL AND GLASS GUARDRAIL SYSTEM TYPICAL WHERE INDICATED - SEE TYPICAL RAILING NOTES ON THIS SHEET - THIS ITEM IS TO BE A DELEGATED DESIGN ITEM.
- 6 EXISTING PARKING STRUCTURE TO REMAIN AND TO BE MODIFIED - SEE PARKING STRUCTURE RELATED DRAWINGS
- 7 GLASS FASCIA / SCREEN SYSTEM
- 8 MECHANICAL WALL LOUVER.

SOUTH FACE

BREAKDOWN OF MAJOR BUILDING MATERIALS

MATERIAL	MATERIAL S.F.	TOTAL AREA OF SOUTH FACE	% OF MATERIAL FOR SOUTH FACE
GRANITE	1,673 S.F.	18,905 S.F. OF TOTAL SURFACE AREA	9%
T&G WOOD LOOK ALUMINUM RAIN SCREEN SYSTEM	5,797 S.F.		31%
PREFINISHED ALUMINUM COMPOSITE MATERIAL RAIN SCREEN SYSTEM (ACM)	2,652 S.F.		14%
OPENINGS (DOORS / WINDOWS / GLASS FASCIA)	8,783 S.F.		46%
MECHANICAL WALL LOUVERS	0 S.F.		9%



ARCHITECT'S INFORMATION



Russell Platt Architecture
4301 West 4570 South
West Valley City, Utah 84120
801-580-0181

PROFESSIONAL STAMP:

CODE OFFICIAL STAMP:

PROJECT NAME:

CENTENNIAL TOWER 2

10012 S. CENTENNIAL PARKWAY
SANDY, UT. 84070

REVISIONS:

NO. DATE DESCRIPTION

ISSUED:

NO.	DATE	DESCRIPTION
01	5/21/2018	SCHEMATIC CORE & SHELL SUBMITTAL
02	6/1/2018	SITE PLAN SUBMITTAL
03	7/25/2018	SITE PLAN RE-SUBMITTAL

OWNER PROJECT #: 18-22
RPA PROJECT #: GTE
DRAWN BY: RPA
CHECKED BY: RPA
DESIGNED BY: RPA

COPYRIGHT: © 2018 RUSSELL PLATT ARCHITECTURE

SHEET TITLE:

EXTERIOR ELEVATIONS

SHEET NUMBER:

AE-201

WEST FACE BREAKDOWN OF MAJOR BUILDING MATERIALS			
MATERIAL	MATERIAL S.F.	TOTAL AREA OF WEST FACE	% OF MATERIAL FOR WEST FACE
GRANITE	2,785 S.F.	20,412 S.F. OF TOTAL SURFACE AREA	14%
T&G WOOD LOOK ALUMINUM RAIN SCREEN SYSTEM	8,409 S.F.		41%
PREFINISHED ALUMINUM COMPOSITE MATERIAL RAIN SCREEN SYSTEM (ACM)	2,276 S.F.		11%
OPENINGS (DOORS / WINDOWS / GLASS FASCIA)	5,846 S.F.		29%
MECHANICAL WALL LOUVERS	1,116 S.F.		5%

- ### KEYED NOTES
- REFERENCE AE-201 & AE-202
- BLACK GRANITE PANELS UP TO LEVEL 3.
 - T&G WOOD LOOK ALUMINUM RAIN SCREEN SYSTEM.
 - PREFINISHED ALUMINUM COMPOSITE MATERIAL RAIN SCREEN SYSTEM (ACM).
 - ALUMINUM FRAMED STOREFRONT WINDOW / SLIDING DOOR SYSTEM TYPICAL - COORDINATE WITH PLANS, SCHEDULES AND WINDOW / DOOR ELEVATIONS.
 - 42" HIGH STAINLESS STEEL AND GLASS GUARDRAIL SYSTEM TYPICAL WHERE INDICATED - SEE TYPICAL RAILING NOTES ON THIS SHEET - THIS ITEM IS TO BE A DELEGATED DESIGN ITEM.
 - EXISTING PARKING STRUCTURE TO REMAIN AND TO BE MODIFIED - SEE PARKING STRUCTURE RELATED DRAWINGS
 - GLASS FASCIA / SCREEN SYSTEM
 - MECHANICAL WALL LOUVER.

NORTH FACE BREAKDOWN OF MAJOR BUILDING MATERIALS			
MATERIAL	MATERIAL S.F.	TOTAL AREA OF NORTH FACE	% OF MATERIAL FOR NORTH FACE
GRANITE	1,967 S.F.	18,958 S.F. OF TOTAL SURFACE AREA	10%
T&G WOOD LOOK ALUMINUM RAIN SCREEN SYSTEM	5,453 S.F.		29%
PREFINISHED ALUMINUM COMPOSITE MATERIAL RAIN SCREEN SYSTEM (ACM)	2,785 S.F.		15%
OPENINGS (DOORS / WINDOWS / GLASS FASCIA)	8,780 S.F.		46%
MECHANICAL WALL LOUVERS	0 S.F.		0%

ARCHITECT'S INFORMATION

RUSSELL PLATT ARCHITECTURE

Russell Platt Architecture
4301 West 4570 South
West Valley City, Utah 84120
801-580-0181

PROFESSIONAL STAMP:

CODE OFFICIAL STAMP:

PROJECT NAME:

CENTENNIAL TOWER 2

10012 S. CENTENNIAL PARKWAY
SANDY, UT. 84070

ISSUED:

NO.	DATE	DESCRIPTION
01	5/21/2018	SCHEMATIC CORE & SHELL SUBMITTAL
02	6/1/2018	SITE PLAN SUBMITTAL
03	7/25/2018	SITE PLAN RE-SUBMITTAL

OWNER PROJECT #:
RPA PROJECT #: 18-22
DRAWN BY: GTE
CHECKED BY: RPA
DESIGNED BY: RPA
COPYRIGHT:
© 2018 RUSSELL PLATT ARCHITECTURE

SHEET TITLE:

EXTERIOR ELEVATIONS

SHEET NUMBER:
AE-202

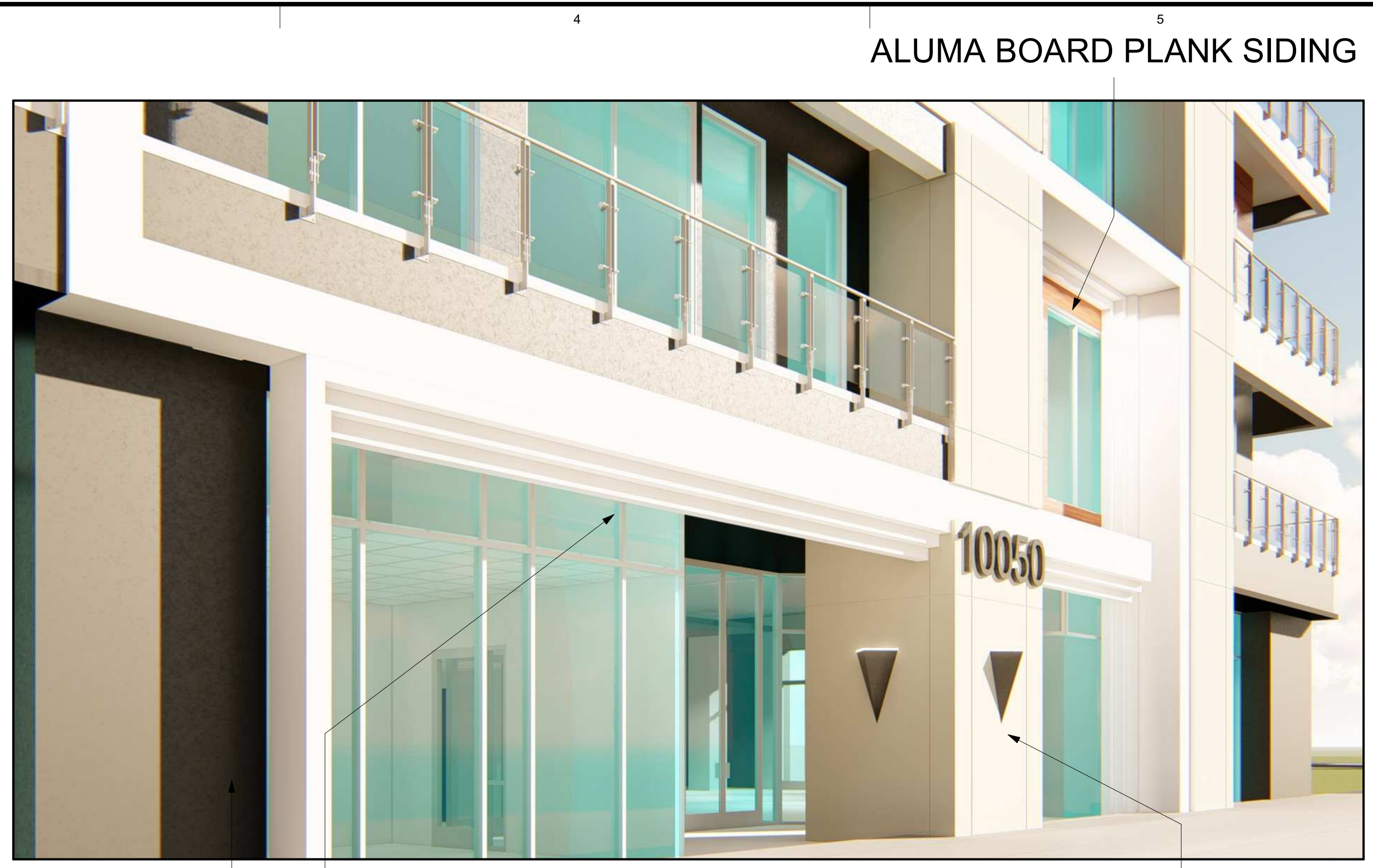


Last Plotted: 8/27/2018 11:58:05 AM



ENTRY

ALUMA BOARD PLANK SOFFIT ALUMA BOARD PANELS



ENTRY

GRANITE ALUMA BOARD PLANK SOFFIT ALUMA BOARD PANELS



SOUTH WEST VIEW



ENTRY FROM ABOVE

ARCHITECT'S INFORMATION:
RUSSELL PLATT ARCHITECTURE
 Russell Platt Architecture
 4301 West 4570 South
 West Valley City, Utah 84120
 801-580-0108

PROFESSIONAL STAMP:

CODE OFFICIAL STAMP:

PROJECT NAME:

CENTENNIAL TOWERS

ISSUED:	
NO.	DATE DESCRIPTION
01	5/21/2018 SCHEMATIC CORE & SHELL SUBMITTAL
02	6/1/2018 SITE PLAN SUBMITTAL
03	7/25/2018 SITE PLAN RE-SUBMITTAL

OWNER PROJECT #:
 RPA PROJECT #: 18-22
 DRAWN BY: GTE
 CHECKED BY: RPA
 DESIGNED BY: RPA
 COPYRIGHT:
 © 2018 RUSSELL PLATT ARCHITECTURE

SHEET TITLE:
PERSPECTIVE RENDERINGS

SHEET NUMBER:
A101

PROFESSIONAL STAMP:

CODE OFFICIAL STAMP:

PROJECT NAME:

CENTENNIAL TOWERS

REVISIONS:

NO.	DATE	DESCRIPTION

ISSUED:

NO.	DATE	DESCRIPTION
01	5/21/2018	SCHEMATIC CORE & SHELL SUBMITTAL
02	6/1/2018	SITE PLAN SUBMITTAL
03	7/25/2018	SITE PLAN RE-SUBMITTAL

OWNER PROJECT #:

RPA PROJECT #: 18-22

DRAWN BY: GTE

CHECKED BY: RPA

DESIGNED BY: RPA

COPYRIGHT:
 © 2018 RUSSELL PLATT ARCHITECTURE

SHEET TITLE:

PERSPECTIVE RENDERINGS

SHEET NUMBER:

A102



SOUTH WEST VIEW OF BASE

- ALUMA BOARD PLANK SIDING
- ALUMA BOARD PANELS
- ALUMA BOARD PLANK SOFFIT
- GRANITE



NORTH WEST VIEW OF BASE

- ALUMA BOARD PLANK SIDING
- ALUMA BOARD PANELS
- ALUMA BOARD PLANK SOFFIT
- GRANITE



NORTH WEST VIEW

- ALUMA BOARD PLANK SIDING
- ALUMA BOARD PANELS
- ALUMA BOARD PLANK SOFFIT
- GRANITE

PROFESSIONAL STAMP:

CODE OFFICIAL STAMP:

PROJECT NAME:

CENTENNIAL TOWERS

REVISIONS:

NO.	DATE	DESCRIPTION
01	5/21/2018	SCHEMATIC CORE & SHELL SUBMITTAL
02	6/1/2018	SITE PLAN SUBMITTAL
03	7/25/2018	SITE PLAN RE-SUBMITTAL

ISSUED:

NO.	DATE	DESCRIPTION
01	5/21/2018	SCHEMATIC CORE & SHELL SUBMITTAL
02	6/1/2018	SITE PLAN SUBMITTAL
03	7/25/2018	SITE PLAN RE-SUBMITTAL

OWNER PROJECT #:

RPA PROJECT #: 18-22

DRAWN BY: GTE

CHECKED BY: RPA

DESIGNED BY: RPA

COPYRIGHT:

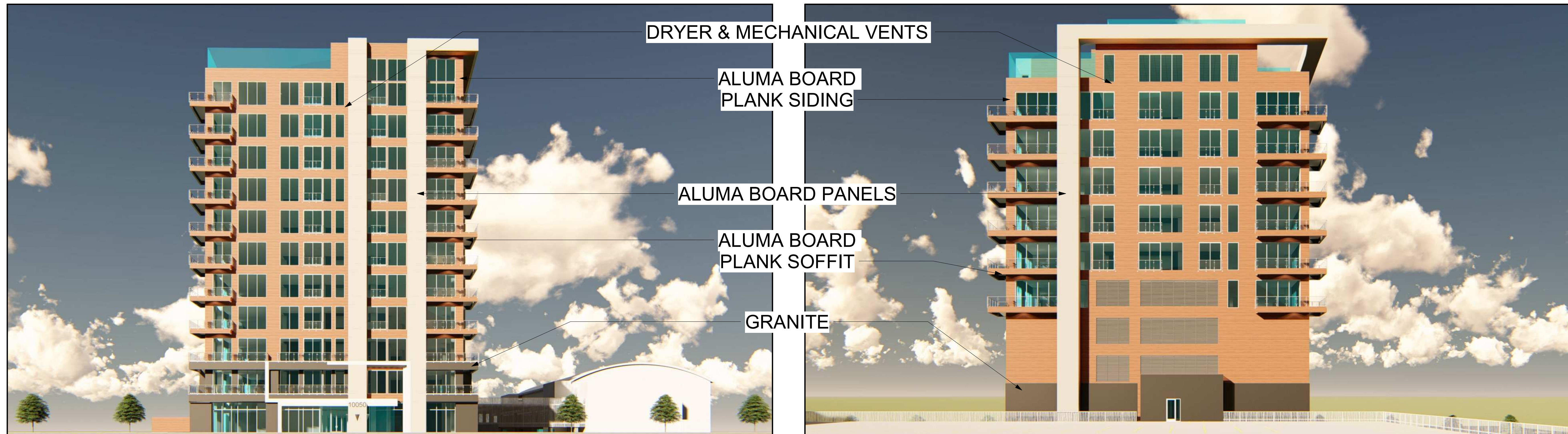
© 2018 RUSSELL PLATT ARCHITECTURE

SHEET TITLE:

COLORED ELEVATIONS

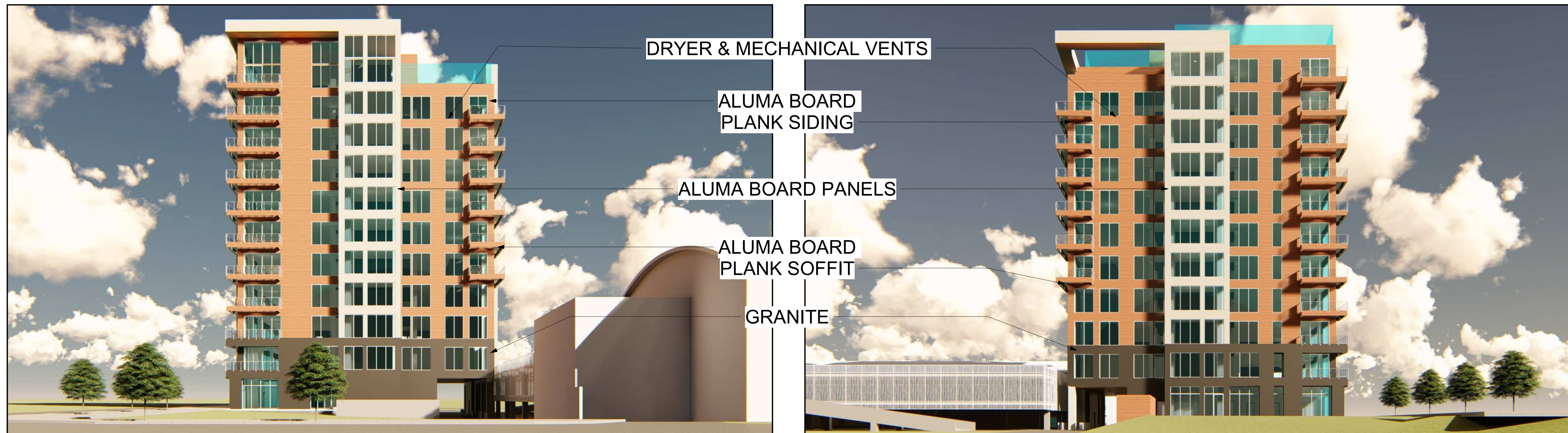
SHEET NUMBER:

A103



EAST

WEST

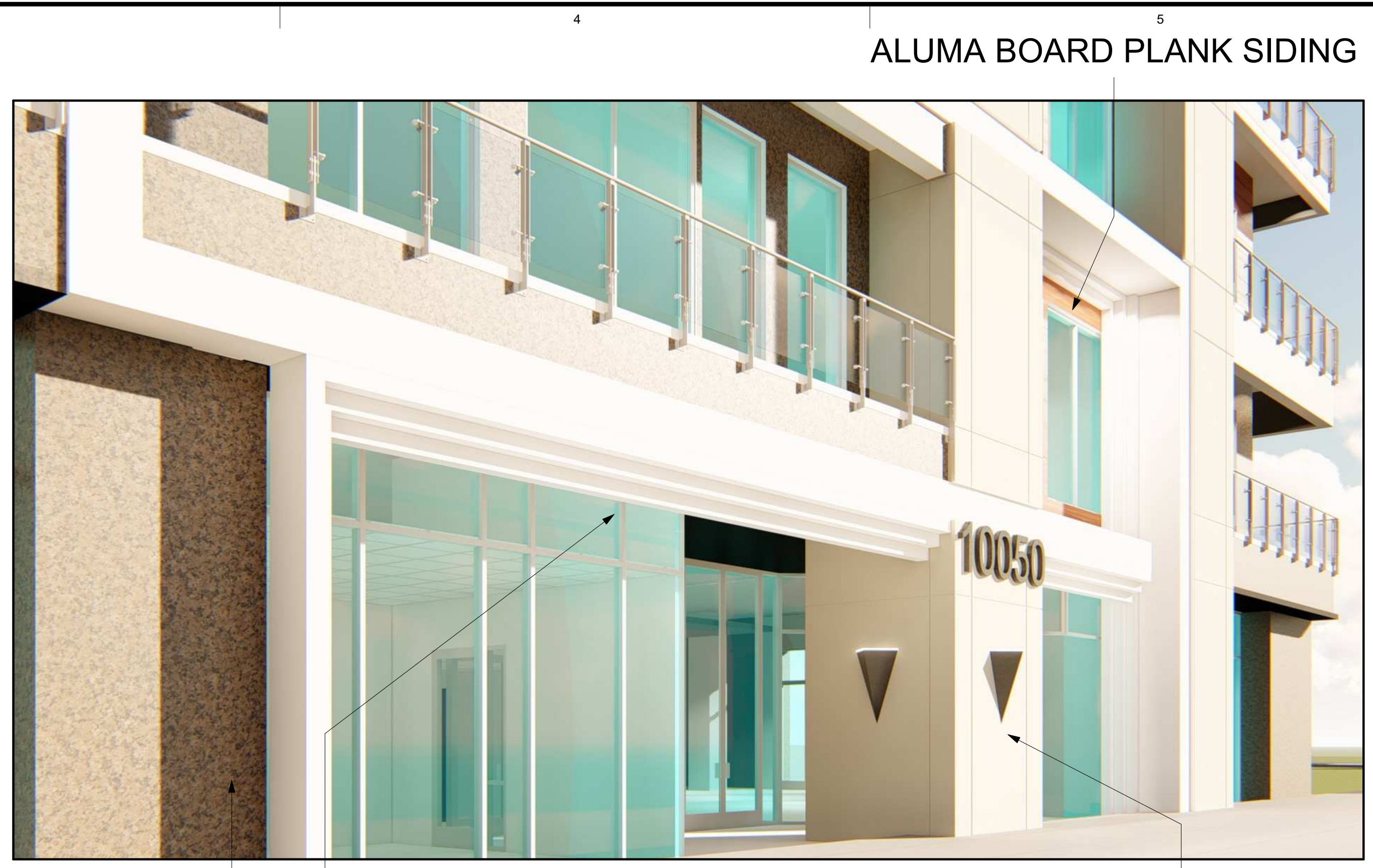


SOUTH

NORTH



ENTRY
 ALUMA BOARD PLANK SOFFIT ALUMA BOARD PANELS



ENTRY GRANITE ALUMA BOARD PLANK SOFFIT
 ALUMA BOARD PANELS



SOUTH WEST VIEW



ENTRY FROM ABOVE

ARCHITECT'S INFORMATION:
RUSSELL PLATT ARCHITECTURE
 Russell Platt Architecture
 4301 West 4570 South
 West Valley City, Utah 84120
 801-580-0108

PROFESSIONAL STAMP:

CODE OFFICIAL STAMP:

PROJECT NAME:

CENTENNIAL TOWERS

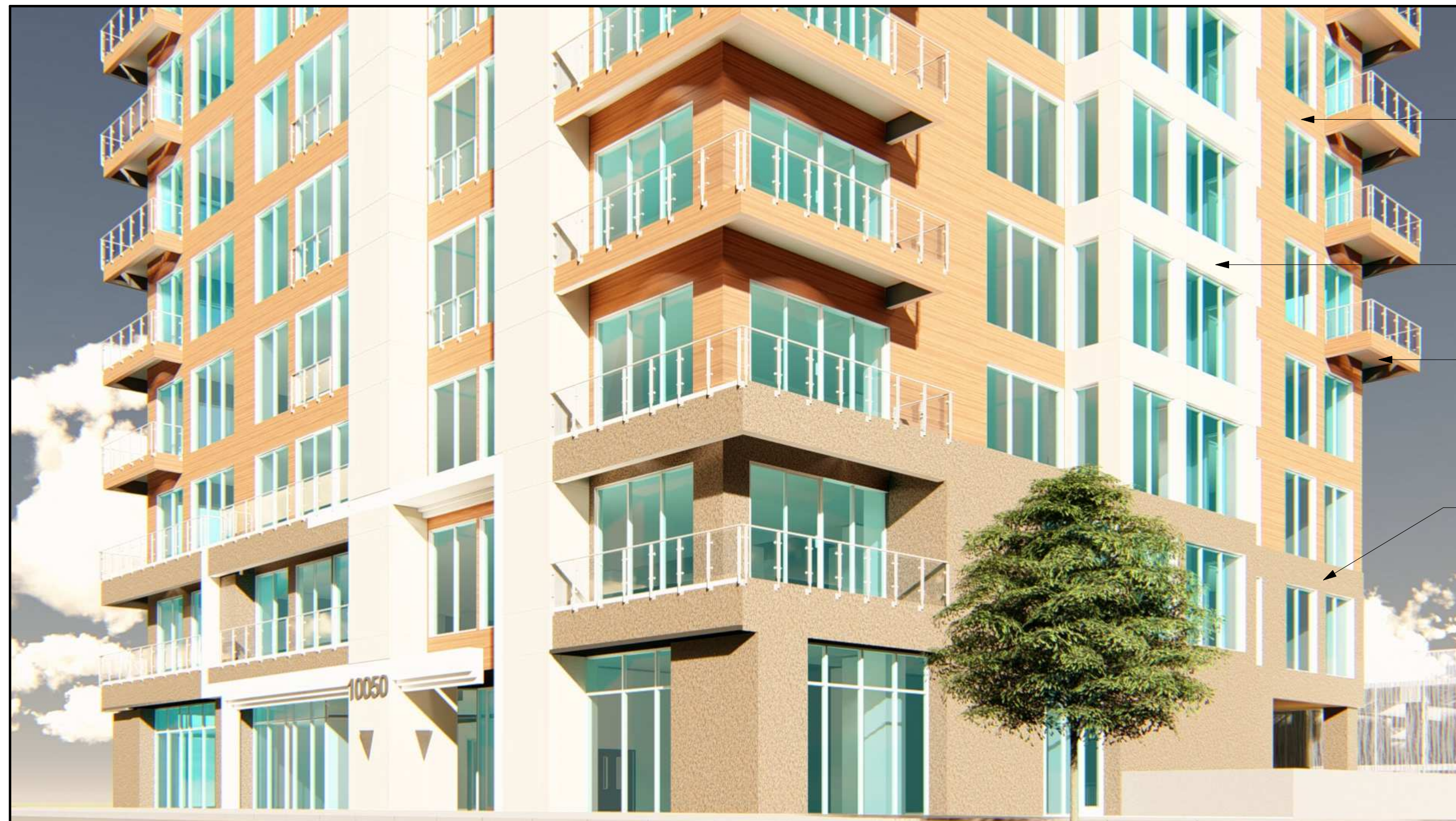
REVISIONS:
 NO. DATE DESCRIPTION

NO.	DATE	DESCRIPTION
01	5/21/2018	SCHEMATIC CORE & SHELL SUBMITTAL
02	6/1/2018	SITE PLAN SUBMITTAL
03	7/25/2018	SITE PLAN RE-SUBMITTAL

OWNER PROJECT #:
 RPA PROJECT #: 18-22
 DRAWN BY: GTE
 CHECKED BY: RPA
 DESIGNED BY: RPA
 COPYRIGHT:
 © 2018 RUSSELL PLATT ARCHITECTURE

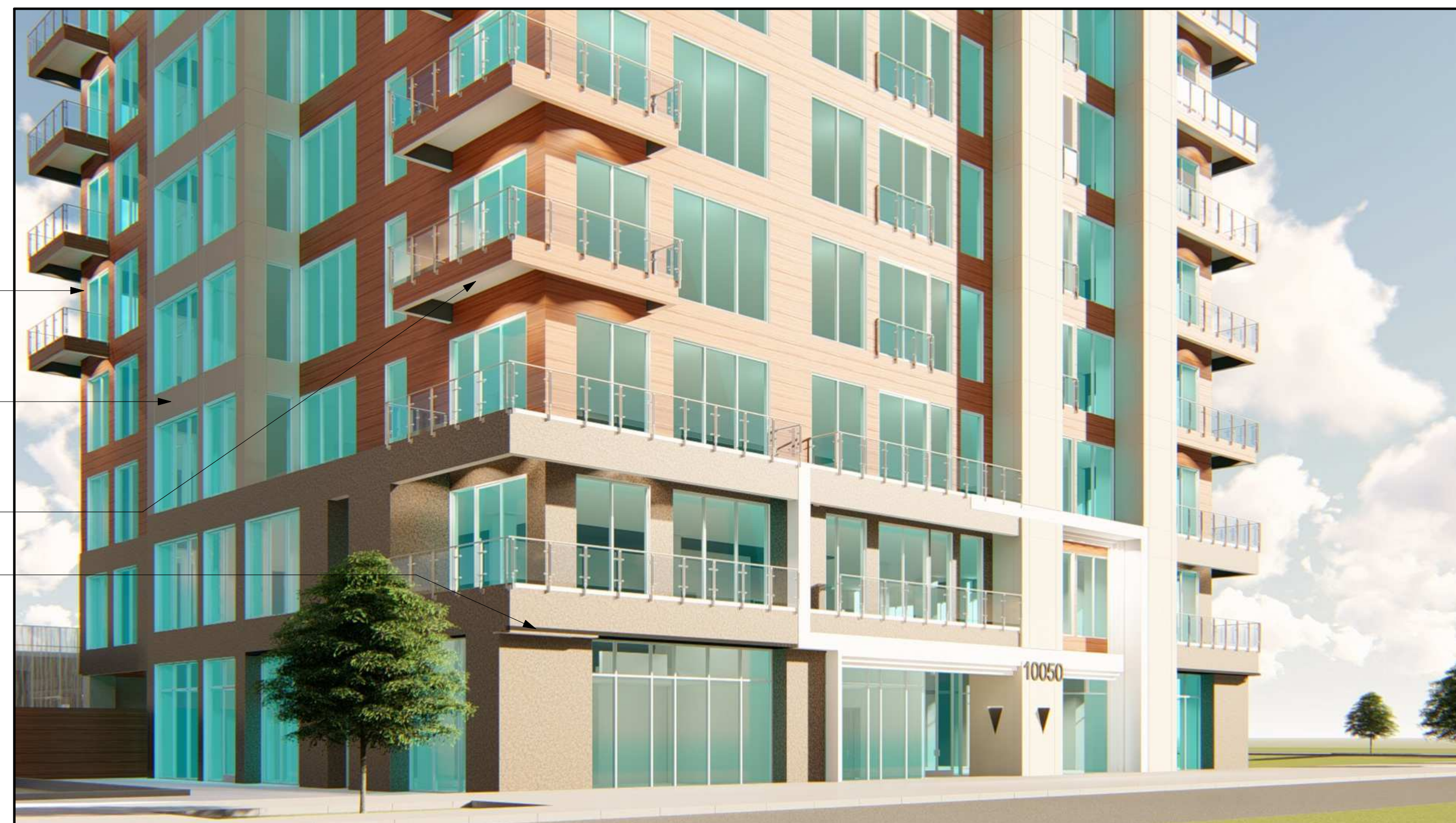
SHEET TITLE:
PERSPECTIVE RENDERINGS

SHEET NUMBER:
A101



SOUTH WEST VIEW OF BASE

- ALUMA BOARD PLANK SIDING
- ALUMA BOARD PANELS
- ALUMA BOARD PLANK SOFFIT
- GRANITE



NORTH WEST VIEW OF BASE

- ALUMA BOARD PLANK SIDING
- ALUMA BOARD PANELS
- ALUMA BOARD PLANK SOFFIT
- GRANITE



NORTH WEST VIEW

- ALUMA BOARD PLANK SIDING
- ALUMA BOARD PANELS
- ALUMA BOARD PLANK SOFFIT
- GRANITE

PROFESSIONAL STAMP:

CODE OFFICIAL STAMP:

PROJECT NAME:

CENTENNIAL TOWERS

ISSUED:
 NO. DATE DESCRIPTION

NO.	DATE	DESCRIPTION
01	5/21/2018	SCHEMATIC CORE & SHELL SUBMITTAL
02	6/1/2018	SITE PLAN SUBMITTAL
03	7/25/2018	SITE PLAN RE-SUBMITTAL

OWNER PROJECT #:
 RPA PROJECT #: 18-22
 DRAWN BY: GTE
 CHECKED BY: RPA
 DESIGNED BY: RPA
 COPYRIGHT:
 © 2018 RUSSELL PLATT ARCHITECTURE

SHEET TITLE:
PERSPECTIVE RENDERINGS

SHEET NUMBER:
A102

PROFESSIONAL STAMP:

CODE OFFICIAL STAMP:

PROJECT NAME:

CENTENNIAL TOWERS

REVISIONS:

NO.	DATE	DESCRIPTION
01	5/21/2018	SCHEMATIC CORE & SHELL SUBMITTAL
02	6/1/2018	SITE PLAN SUBMITTAL
03	7/25/2018	SITE PLAN RE-SUBMITTAL

ISSUED:

NO.	DATE	DESCRIPTION
01	5/21/2018	SCHEMATIC CORE & SHELL SUBMITTAL
02	6/1/2018	SITE PLAN SUBMITTAL
03	7/25/2018	SITE PLAN RE-SUBMITTAL

OWNER PROJECT #:

RPA PROJECT #: 18-22

DRAWN BY: GTE

CHECKED BY: RPA

DESIGNED BY: RPA

COPYRIGHT:

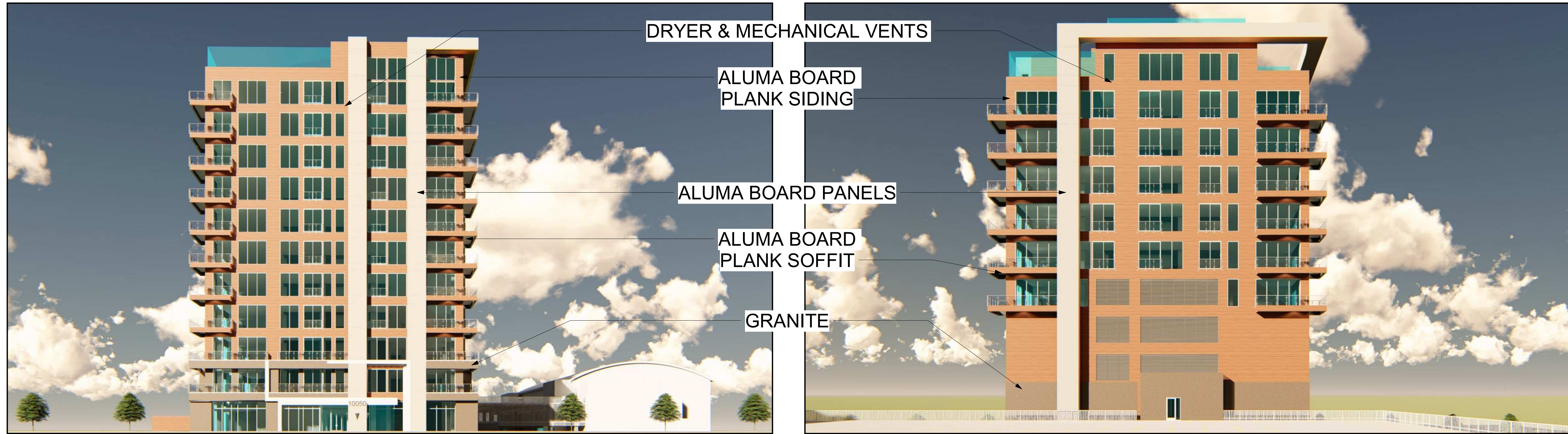
© 2018 RUSSELL PLATT ARCHITECTURE

SHEET TITLE:

COLORED ELEVATIONS

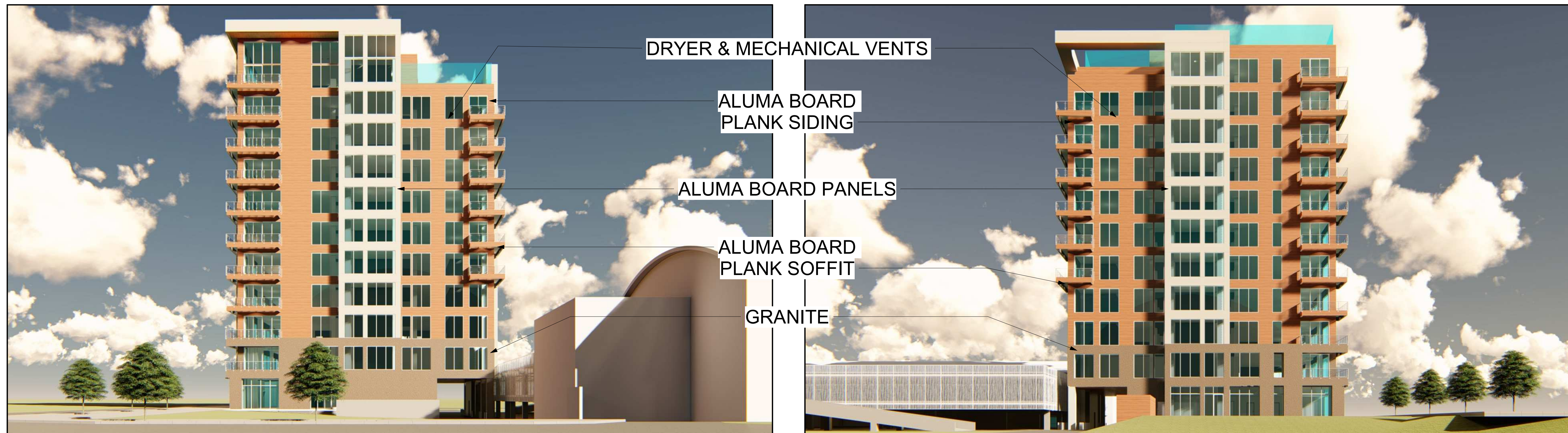
SHEET NUMBER:

A103



EAST

WEST



SOUTH

NORTH