



WASATCH BLVD CROSSING SOLUTIONS 2025

1

Acronyms

MUTCD = Manual on Uniform Traffic Control Devices

LTAP = Local Technical Assistance Program

HAWK = High Intensity Activated Crosswalk

RRFB = Rapid Rectangular Flashing Beacon

APS = Audible Pedestrian Signal

DFS = Driver Feedback Sign

SSD = Stopping Site Distance

Ped = Pedestrian

→ = Today's Focus



RRFB



HAWK



APS



DFS



WASATCH BLVD CROSSING SOLUTIONS

2



WASATCH BLVD

Traffic Calming Presentation
Fall 2023

3

What's Been Done

Prior to August 2023

- Sign Relocation/Review:
 - DFS
 - Advisory Speed
 - Curve Chevrons
- Studies:
 - Speed Limit
 - Accident
 - Sight Distance
 - Road Geometry
- Speed Monitoring
- Enforcement
- Crosswalk Maintenance

2023 - 2025

- RRFB Install at 2200 E
- APS's at 1700 E
- LTAP Curve Analysis
- Tree Trimming
- Ski-Traffic Operations
- No U-Turn Signs Install
- HAWK Crossing Study
- Speed Monitoring
- Mobile Speed Trailer
- Enforcement
- Pavement Maintenance
- Sign Maintenance



WASATCH BLVD CROSSING SOLUTIONS

4

What's Still Needed

2025+

- Underway
 - APS at SR-209
 - 1700 E Signal Upgrade
 - Debris Flow Study
 - 1800 E X-Slope Reprofilng
- → Pedestrian Crossing Upgrade
- Cassowary Dr Sight Triangles
- Wasatch Blvd Bulb-Outs
- School Crossing Bulb-Outs
- Missing Sidewalk (ex. Canton Ln)
- Traffic Calming Telemetric Software



HAWK Crossing at 840 E 9400 S, installed 2022



WASATCH BLVD CROSSING SOLUTIONS

5



PEDESTRIAN CROSSING UPGRADE

6

Project Purpose and Need

Background

- Citizens Concerns
 - Safety
 - School Children
 - Vehicle Speeds
 - Posted Speed Limit
 - Sight Distance
 - Access to Parks, Trails, Church
- Goals
 - Prevent Fatal and Serious Injury Crashes
 - Improve Access

Moving Forward

- Improve Pedestrian Visibility
 - ✓ Tree Trimming
 - ✓ High-Hazard Striping
 - ✓ Advanced Warning Signs
 - ✓ RRFB's
 - ✓ School Hours: RSSZ ←
 - Other Times: HAWK ←
- Effective Speed ↓ = ↓ Crash Severity
 - Change Roadway Geometry
 - Rebuild Curves \$\$\$\$
 - Narrow Pavement ←



WASATCH BLVD CROSSING SOLUTIONS

7

Five Project Alternatives

School Flashers

1. Do Nothing
 - ✓ High-Hazard Striping
 - ✓ Advanced Warning Signs
 - ✓ RRFB's
 - ✓ RSSZ
2. Overhead RRFB, RSSZ, Bulb-outs



HAWK Crossing*

3. 1950 E Wasatch Blvd
4. 2220 E Wasatch Blvd
5. 2240 E Wasatch Blvd

*Must Meet Sight Distance Standards



WASATCH BLVD CROSSING SOLUTIONS

8

HAWK Crossings 101

- MUTCD Standard
 - Old: Mid-Block Only
 - New: Intersections Ok
- Must be Ped Actuated
- Sight Distance
 - 100' in Advance, 20' Past
 - Signal SSD Applies
- Warrants
 - 20 peds/hr
 - Traffic Gaps Unavailable
 - High Speeds (35+)
 - High Ped Delay
 - Ped Crossing Speed
- Optional Improvements
 - Pedestrian Refuge
 - Bulb-Outs
 - +\$105k needed



WASATCH BLVD CROSSING SOLUTIONS



9

HAWK Crossing Alternatives

1950 East

- Replaces 2220 E Crosswalk
- Closer to Highland Dr Corridor, Bell Canyon Gulley

2240 East

- Replaces 2220 E Crosswalk
- Improves Crossing Facilities for Middle/High Schools, Residents
- Serves More Residents
- Shorter Distance to:
 - Hidden Valley Park
 - Trail Heads
 - Pocket Parks
 - Church

2220 East

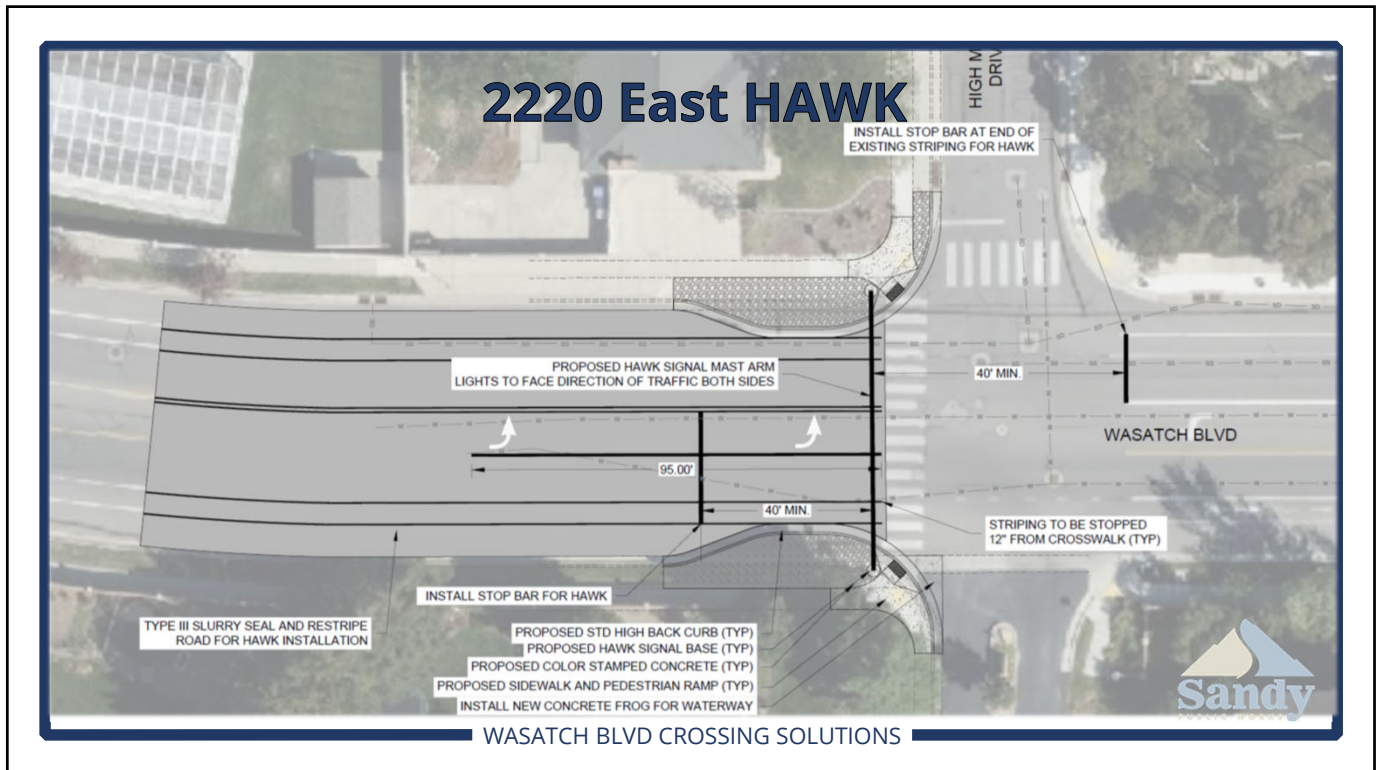
- Upgrades 2220 E Crosswalk
- All 2240 E's Benefits, Plus:
 - Established Crossing Location
 - Maintains:
 - School Walk Route (15-20 Ped's)
 - Bus Stop Locations
 - More Direct Route for Ped's
 - No Ped Refuge Island
 - Intersection Turn Pocket
 - Bulb-Outs Ok



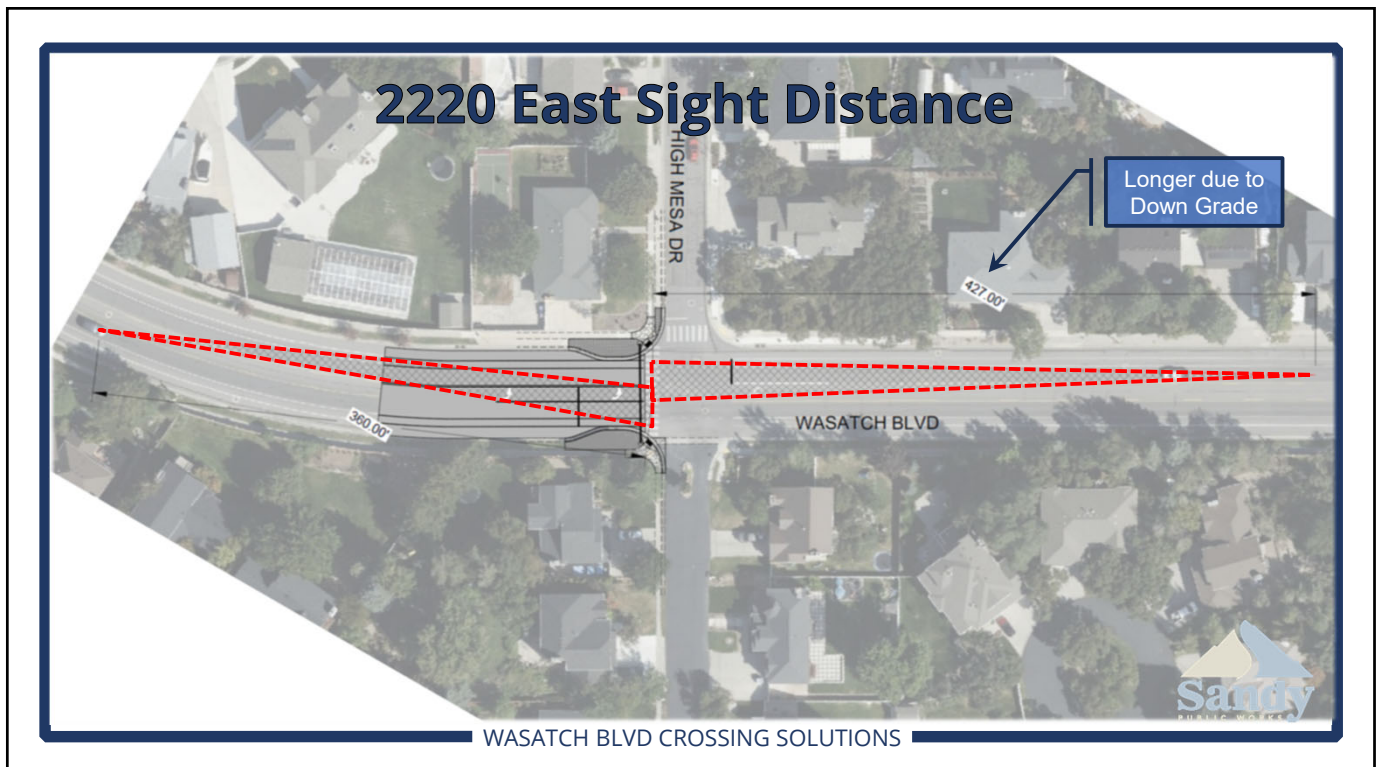
WASATCH BLVD CROSSING SOLUTIONS



10



11



12

2220 E Alternatives

Overhead RSSZ/RRFB

- Maintains 2220 E Crosswalk
- Uncommon



HAWK

- PW's Preferred Option
- Upgrades 2220 E Crosswalk
- New: Intersections Ok
 - STOP on Minor Street
- RSSZ Remains on Roadside
- Red Light is Primary Device in Consistent Location



WASATCH BLVD CROSSING SOLUTIONS

13



sandy.utah.gov/citizenconnect

ONE PLACE TO CONNECT WITH SANDY

In an effort to better communicate with you, we ask that you engage with us on our channels.





SandyNow! My Alerts

Be sure to sign up for emergency and routine alerts including severe weather warnings.



Notify Me

Get email notifications for what interests you like job postings, public notices, and bids/RFPs.



SeeClickFix App

Download app to report issues like graffiti and get emergency and other city notifications.

@SandyCityUtah on Social





SandyNow.com

View this dashboard for the latest in our city: events, news, videos, fact briefs, and more.



Live Streaming

Tune in to City Council and Planning Commission meetings from anywhere, at anytime.



Citizen Connect Survey Panel

Sign up to be on the resident survey panel and have your voice heard on important city services.



Monthly News

Stay in-the-know with our monthly newsletter on SandyNow.com and in the Sandy Journal.

14